

The Time Journey

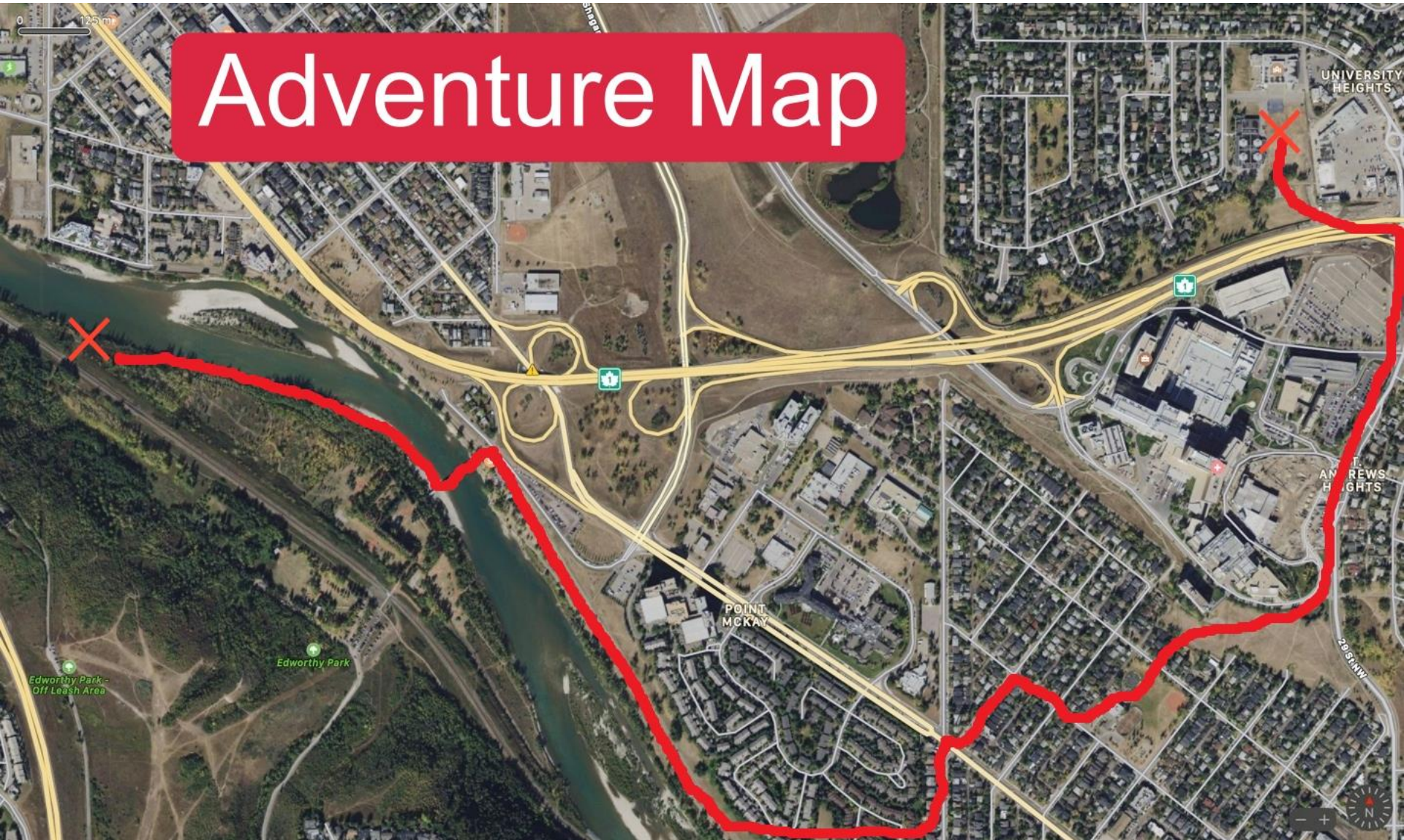
How can we find out about the past, based on what we have today?



Parkdale

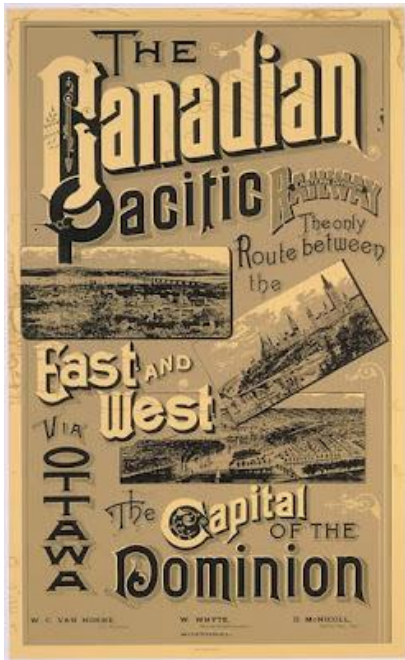
The last 139 years - 1883 to 2022

Adventure Map



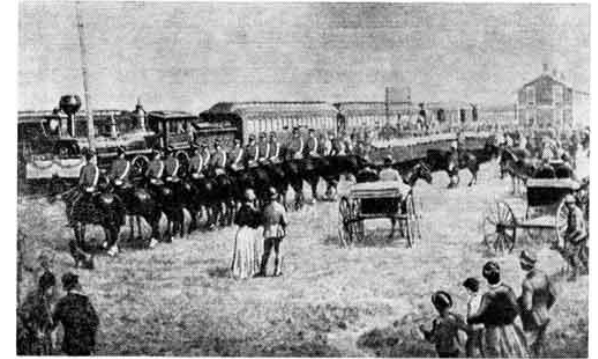
Calgary/Parkdale TimeLine

1883 onward.....



Glenbow Archives NA-841-357

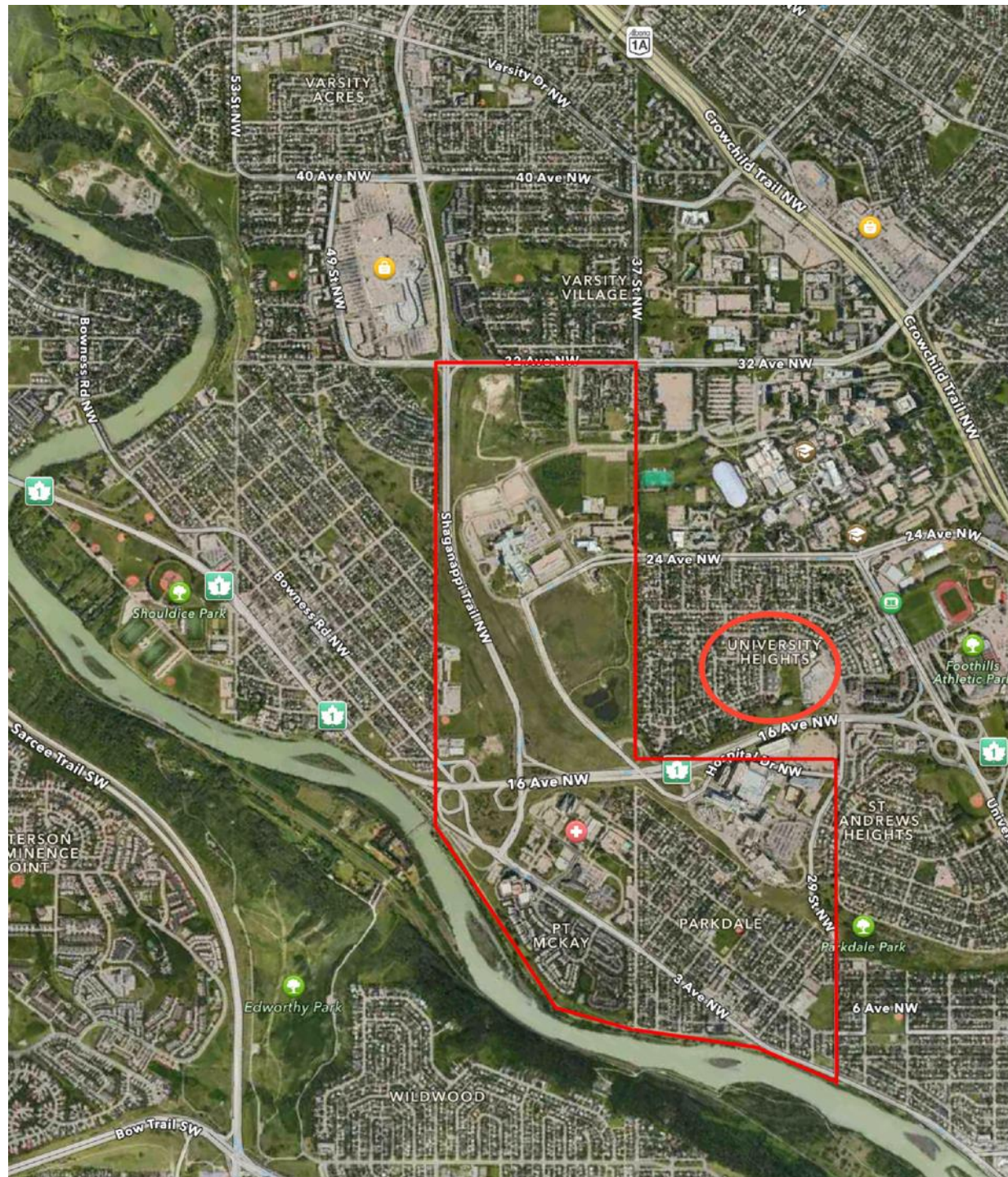
August 10, 1883 the first train reaches Calgary.



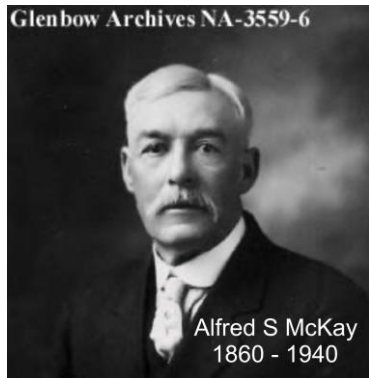
In July 1886 the first TransCanada Canadian Pacific Railway train passes through Calgary.



Sept 1905 Alberta become a Province



Glenbow Archives NA-3559-6



Alfred S McKay
1860 - 1940

1940



Glenbow Archives NA-3559-7

1970



McKay Homestead 1978



1912

Grant Residence (140 37th Street N.W.)



McKay Son's Residence (134 37th Street N.W.)



1921

MAY, 1921

The Beaver

39



The Opening of H.B.C. Calgary Athletic Grounds, June, 1918, was well attended.

1922



Parkdale 1922 Aerial Photo



McKay Homestead House

37 Street, NW Calgary

#214
#210

#202
First Ave. NW Calgary

#140
#136



1924 Calgary Tram Line



1924 - Parkdale

Source - U of C Aerial file CA113-24

Created by Marcel Hebert Dec 2012

37 St. NW

Parkdale Blvd NW

1924



1932
Brickburn



1951



1953

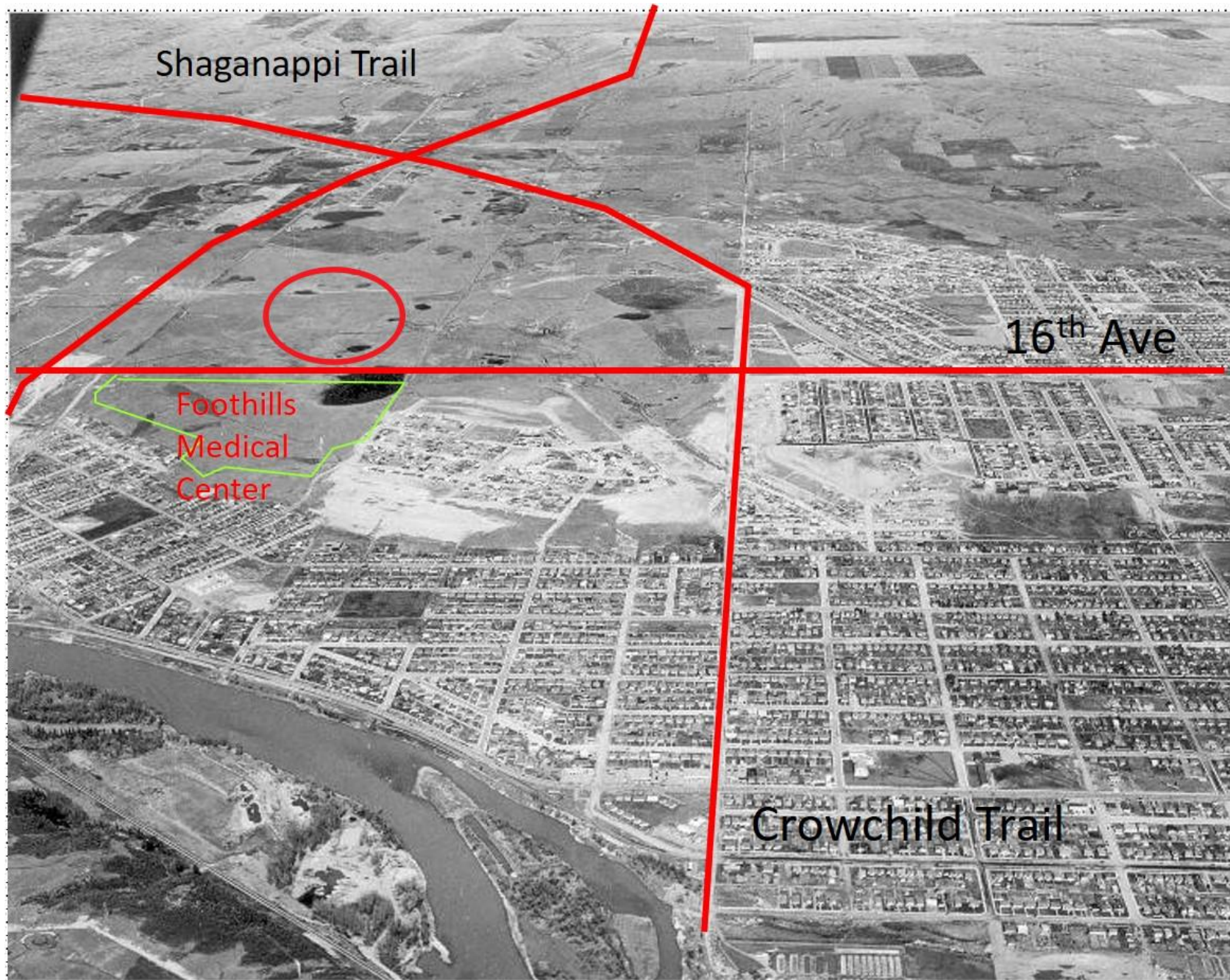


1955

Parkdale Community Center



1956



1956



1958

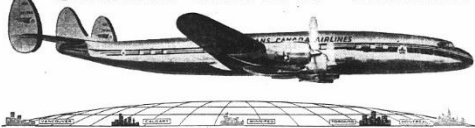
Parkdale 1958

U of C 82012 1767 62



1958

New EXPRESS Super Constellation Service CALGARY - NON-STOP - TORONTO



EASTERN MERCURY leaves Calgary every midnight
arrives Toronto 8.50 a.m. LOCAL TIME
...less than 6 hours flying!



Fastest...and most luxurious, too!

Toronto is just a short overnight trip from Calgary when you fly the TCA new Super Constellation service. You take off at midnight, rest and relax in the air-conditioned comfort of your million sq. ft. cabin while the miles speed rapidly by. In time for the appetizing breakfast brought to your seat — compliments of TCA — coffee. As you glide into Toronto, you're greeted and served... with the white star ahead of you!

Next time you go east, fly TCA's new Super Constellation service — the "Eastern Mercury". It makes no sense — no great costs, no flying — the regular TCA fare is all you pay. Want to know how? For more facts fly the "Eastern Mercury" leaves Toronto at 5 p.m. gets you in Calgary at 11:50 a.m.

QUICK CONNECTIONS TO THE U.S. — The overnight Calgary-Toronto service connects with TCA flights to New York, arriving at 11:55 a.m. — Chicago, arriving at 11:55 a.m. — Cleveland, arriving at 10:55 a.m.

NEW SUPER CONSTELLATION SERVICE TO VANCOUVER — the "Western Mercury" leaves Calgary every evening at 8:30 p.m., arrives Vancouver at 11:30 P.M.

See your Travel Agent or call TCA at 951-1111
100, 100 Ave. W., Edmonton, Alberta



TRANS-CANADA AIR LINES



A GENERAL MOTORS VALUE

A Little Vacation In Every Day!

What's it like to take the wheel of a 1956 Cadillac?

If you don't already know, then we hope you'll come with us now on a little imaginary journey in the "car of cars".

Suppose, if you will, that you're in the driver's seat. The hour is early morning as you turn from the driveway and sweep out into the broad, inviting boulevard.

How wonderful you feel. Those deep, luxurious cushions hold you in perfect comfort — your hands rest naturally on the slender wheel — and all about you are vision... and beauty... and luxury.

It's an impression just to watch the miles go by.

And how quiet and peaceful it is. The car is so smooth and silent in operation that your only sense of motion comes from the sound of the wind and from the passing landscape.

Driving? Well, what could be more relaxing! Starting... no jolting... turning—all are regulated with the lightest touch of toe and hand. You simply bend back and enjoy the ride... and the car does all the rest.

What's it like at the wheel of a 1956 Cadillac?

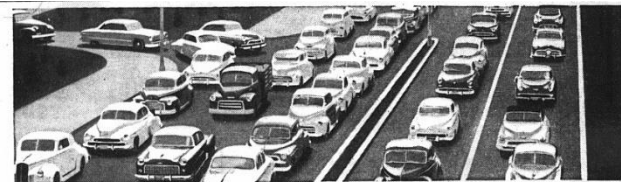
Well, we've heard it said that a drive in a new Cadillac isn't really a drive at all, in the second sense of the word. It's a time for rest and pleasure and relaxation... an interlude that refreshes a man and enriches his spirit.

As one of our friends put it—"It's like having a little vacation every day!"

Someday soon—when the day is bright and the time is right—we hope you'll stop in and take a little vacation of your own in a 1956 Cadillac.

We have some wonderful news waiting for you about the ease—and the economy—with which you can now make the move to this greatest of Cadillacs. Better come in and see us now.

You can be certain of a sincere presentation of all the facts pertaining to Cadillac ownership.



Why did we pledge



the finest gasolines there are!

We did it to simplify things for you. You have no facilities for studying the composition of various gasolines... but we have. And rather than claim this feature as that ingredient we have made a solemn pledge: "We will not permit a single competitor to offer gasoline superior to our new B-A 88 and 98 gasolines." When you buy B-A you can rest assured—there is no best gasoline available.



OUR PLEDGE

"We will not permit a single competitor to offer gasoline superior to our new B-A 88 and 98 gasolines."

Edith Hays

THE BRITISH AMERICAN OIL COMPANY

LIMITED



1959

Note the
beginning
of 16th Ave



1961

Note the beginning
preparation of
Foothills Medical
Hospital



1962

Foothills
Medical
Center



1963



Parkdale 1963
U of C 72534



Note: University
Heights Development



1963

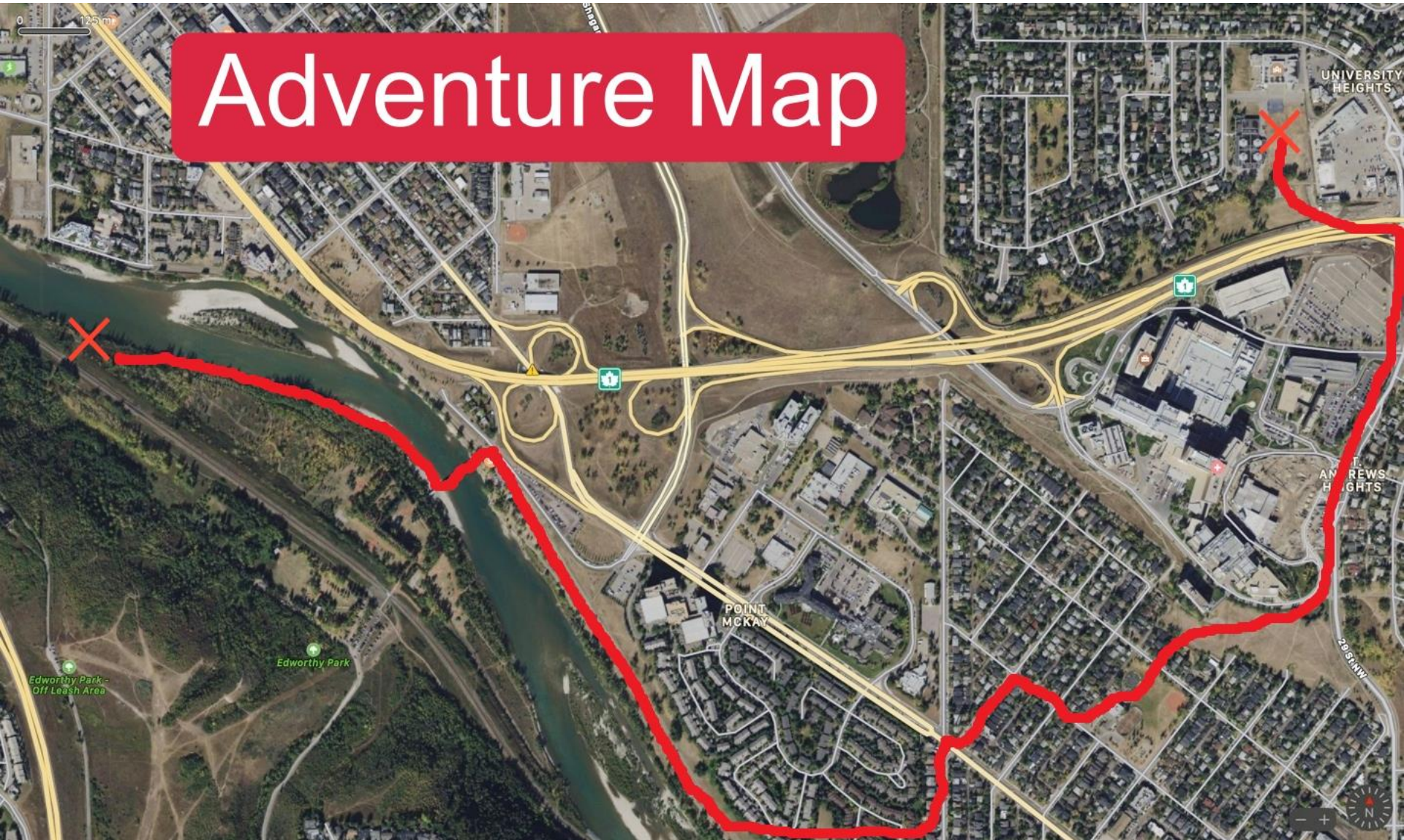


Parkdale/Edworthy Park/Brickburn in the Past



The last 139 years - 1883 to 2022

Adventure Map



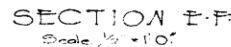
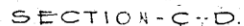
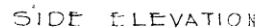
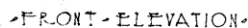
An aerial photograph of a river valley. In the upper left, a town with several buildings and a large parking lot is visible. A river flows from the top right towards the bottom left. A road runs horizontally across the middle of the image. Below the road, there is a dense forest. In the center of the forest, there is a large, light-colored, rectangular structure that appears to be a bridge or a large building. The text "Brickburn in 1905" is overlaid in the center of the image.

Brickburn in 1905





Brickburn 1928



WESTERN LINES

STANDARD
·№2B·SECTION·HOUSE·

SCALE $\frac{1}{4}$ " = 1' FOOT

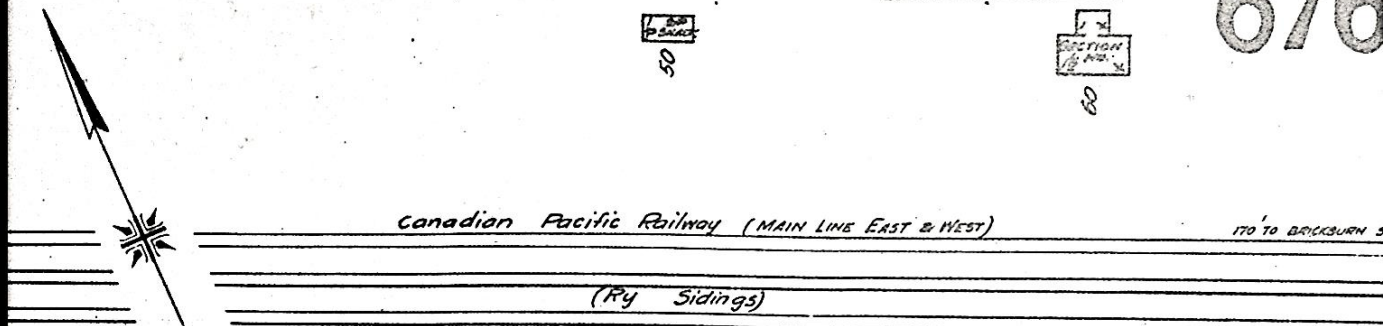
EXCEPT WHERE OTHERWISE NOTED

Ann. Chief Engineer

General Manager

WL-5-17-2

SEPT. 17TH 1927
Revised - Jan. 14th 1928
as Sep. 14 1929



6761
(NE 1/4 SEC. 23, T. 22, R. 22, W. 5, N. 1)

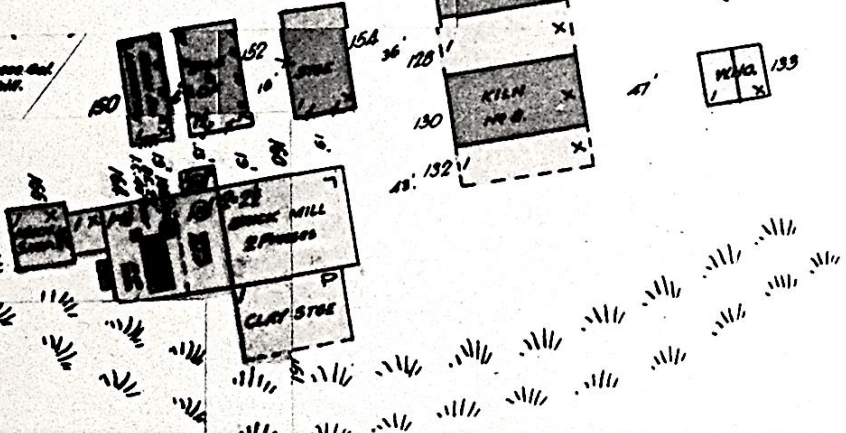
BRICK PLANT
E.H. Crandell Pressed Brick
and Sandstone Co
Located at BRICKBURN ALTA.
5 Miles W. of C.P.R. Station,
CALGARY.

**ALL BUILDINGS
REMOVED.
AUGUST 1947.**

PROTECTION: 100' x 100' and by stone and
HEAT: Stone
LIGHT: Electricity 100' x 100'
FUEL: Black Coal
POWER: Steam
FULL STAFF: 45 (20 at night)

BRICK & FRAME DWELLINGS
250' BEYOND

(at
6761)







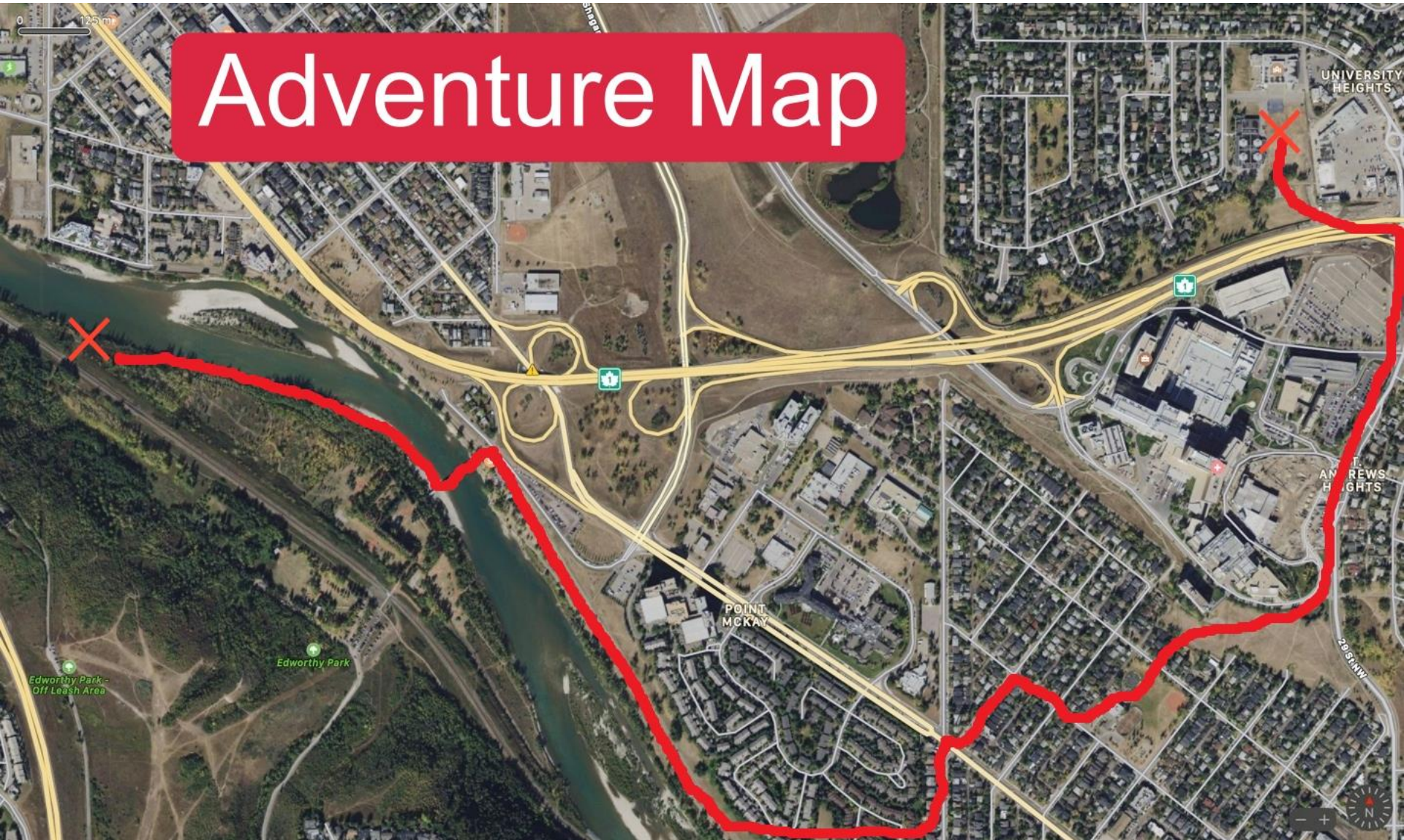






The last 139 years - 1883 to 2022

Adventure Map



The Time Journey

How can we find out about the past, based on what we have today?



Parkdale

Thanks for your
time and hope you
enjoyed the
presentation.