

BUYING in BULK? (Receive Additional Discounts on MTO (Made To Order) rings/jewelry)

3+ ring/items 10% discount
6+ ring/items 12% discount
10+ rings/items 15% discount
20+ rings/items 20% discount
30+ rings/items 30% discount

****If desiring to buy more than 50+ Made to Order rings (any size) email me for greater discount pricing...**

-Handling time- Items are made to order, please allow 12 to 15 days for the production of your rings/items, this allows us to make you ring in any size and with any color gemstone.

Shipping is USPS First Class Mail which includes tracking

All items shipped in a nice gift boxes.

Combined Shipping:yes, free combined shipping on (made to order rings)

INTERNATIONAL SHIPPING:

USPS Priority Mail International Mail \$32.95

email if you have any questions.

Thank you.

Thank you for your Made To Order purchase (MTO). Please allow up to 15 days for the production of your lovely filigree ring. Email anytime with questions. Thank you.



1

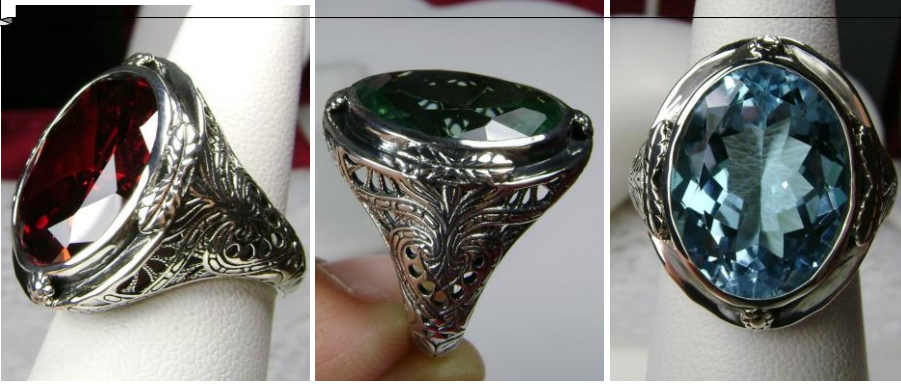
(E)

\$39.00

This is a Vintage design solid sterling silver filigree gemstone ring. This ring has a 18mm by 18mm (about 11/16th of an inch) Gemstone. The stone and setting rise about 1/2 inch off the finger. The inside of the band is marked 925 for sterling. Notice the beautiful criss-cross etched pattern of the silver filigree setting. This is a lovely new, well made ring and it is ready to wear. A white ring box is included and all rings are shipped in the white box for safe keeping.

Gemstone color options (Man-made/Simulated Gemstones): Green Emerald, Blue Sapphire, Red Ruby, Mystic Topaz, Sky Blue Topaz, Purple Amethyst, Orange Citrine, Yellow Citrine, Swiss Blue Topaz, Green Peridot, Red Garnet, White CZ, Black CZ, Pink Topaz, and Peach Topaz

#2



(GG)

\$39.00

This is a lovely Victorian filigree reproduction sterling silver ring. There are lovely detailed filigree flowers and leaves that grace the edge of the bezel set gemstone, notice how the filigree which extends down the band. This well made setting is solid sterling silver and is marked 925. The gemstone is 14mm x 17mm in dimensions; approx. 11/16th of an inch by 1/2" inch.

Gemstone color options (Man-made/Simulated Gemstones): Green Emerald, Blue Sapphire, Red Ruby, Mystic Topaz, White Topaz, Sky Blue Topaz, Purple Amethyst, Orange Citrine, Yellow Citrine, Swiss Blue Topaz, Green Peridot, Red Garnet, White CZ, Black CZ, Pink Topaz, and Peach Topaz

Natural Gemstones varieties available: email for an estimate

#3



(SP)

\$49.99

I found this approximately 110 year old setting and had to have it. I had it recast in silver. I now offer this lovely Victorian design filigree seed pearl ring. The filigree extends all round the gemstone and down the band. Holding the seed pearls in place are four silver leaves. The hand strung seed pearls are approx. 2mm in width. The setting is solid sterling silver and is marked 925. This is a elegant and delicate piece of jewelry that can be passed on for generations... a family heirloom quality of ring... The oval cut gemstone is 13mm x 17mm in dimensions; approx. 11/16th of an inch by 1/2 inch.

Gemstone color options (Man-made/Simulated Gemstones): Green Emerald, Blue Sapphire, Red Ruby, Mystic Topaz, Sky Blue Topaz, Purple Amethyst, Orange Citrine, Yellow Citrine, Swiss Blue Topaz, Green Peridot, Red Garnet, White CZ, Black CZ, Pink Topaz, and Peach Topaz

Natural Gemstones varieties available: email for an estimate



#4

(K)

\$35.00

This is a stunning Vintage reproduction filigree ring in solid sterling silver. The round full cut high quality gemstone is 13mm (just under 1/2th of an inch) in diameter. The inside of the band is marked 925 for sterling. Notice the beautiful intricate trellis design of the silver filigree setting and etched band.

Gemstone color options (Man-made/Simulated Gemstones): Green Emerald, Blue Sapphire, Red Ruby, Mystic Topaz, White Topaz, Sky Blue Topaz, Purple Amethyst, Orange Citrine, Yellow Citrine, Swiss Blue Topaz, Green Peridot, Red Garnet, White CZ, Black CZ, Pink Topaz, and Peach Topaz

Natural Gemstones varieties available: email for an estimate



#5

15mmx10mm Emerald Cut Ring (G)

\$37.00

Matching Earrings available

Inspired by Victorian era designs, I now offer this lovely filigree reproduction in sterling silver. The flawless red garnet CZ is 15mm (5/8th of an inch) by 12mm (1/2 inch) in size. The inside of the band is etched 925 for sterling. Notice the intricate and detailed Victorian design of the antique patina silver filigree setting all the way down the band.

Gemstone color options (Man-made/Simulated Gemstones): Green Emerald, Blue Sapphire, Red Ruby, Mystic Topaz, Sky Blue Topaz, Purple Amethyst, Orange Citrine, Yellow Citrine, Swiss Blue Topaz, Green Peridot, Red Garnet, White CZ, Black CZ, Pink Topaz

Natural Gemstones varieties available: email for an estimate

#6



1



(X)

\$39.00

This is a Vintage reproduction solid sterling silver filigree ring. This lovely ring is set with an oval full cut gemstone, measuring 17mm (11/16th of an inch) by 22mm (7/8th inch) in dimension... The inside of the band is marked 925. Notice the beautiful swirl and heart shape filigree of this detailed setting.

Gemstone color options (Man-made/Simulated Gemstones): Deep Blue Sapphire, Red Ruby, Mystic Topaz, Purple Amethyst, Green Peridot, Red Garnet CZ, Pink Topaz

#7



(F)

\$37.00

Matching Earrings available

This is a Vintage reproduction Fleur De Lis design filigree solid sterling silver ring. The round cut gemstone is 5/8th of an inch (15mm) in diameter. The inside of the band is hallmarked 925. Notice the beautiful fleur-de-lis-like style of the filigree setting.

Gemstone color options (Man-made/Simulated Gemstones): Green Emerald, Blue Sapphire, Red Ruby, Mystic Topaz, Blue Topaz, Purple Amethyst, Orange Citrine, Yellow Citrine, Swiss Blue Topaz, Green Peridot, Red Garnet, White CZ, Black CZ, Pink Topaz, and Peach Topaz

Natural Gemstones varieties available: email for an estimate

#8



(Crown)

\$35.00

This is a brand new Victorian inspired solid sterling silver 925 crown filigree gemstone ring. The brilliant full cut high gemstone is 13mm (1/2th of an inch) in diameter. The inside of the band is marked 925 for sterling. Notice the beautiful intricate crown like design of the silver filigree setting and band.

Gemstone color options (Man-made/Simulated Gemstones): Green Emerald, Blue Sapphire, Red Ruby, Mystic Topaz, Blue Topaz, Purple Amethyst, Orange Citrine, Yellow Citrine, Swiss Blue Topaz, Green Peridot, Red Garnet, White CZ, Black CZ, Pink Topaz, and Peach Topaz

Natural Gemstones varieties available: email for an estimate

#9



\$39.00

This is Vintage revival solid sterling silver filigree Huge gemstone ring. The high quality rectangle gemstone is 21mm in length by 16mm in width (5/8th inch by 11/16th inch). The inside of the band is marked 925 for sterling. Notice the beautiful swirl like craftsmanship of the silver filigree setting.

Gemstone color options (Man-made/Simulated Gemstones): Green Emerald, Blue Sapphire, Red Ruby, Mystic Topaz, Blue Topaz, Purple Amethyst, Orange Citrine, Yellow Citrine, Swiss Blue Topaz, Green Peridot, Red Garnet, White CZ, Black CZ, Pink Topaz, and Peach Topaz

#10



(OK) \$35.00

This is a brand new stunning Vintage design sterling silver 925 filigree gemstone ring. The flawless oval full cut gemstone is 16mm (5/8th of an inch) by 12mm (1/2 inch) in dimension... The inside of the band is marked 925 for sterling. Notice the beautiful filigree swirl like craftsmanship of the silver setting.

Gemstone color options (Man-made/Simulated Gemstones): Green Emerald, Blue Sapphire, Red Ruby, Mystic Topaz, Blue Topaz, Purple Amethyst, Orange Citrine, Yellow Citrine, Swiss Blue Topaz, Green Peridot, Red Garnet, White CZ, Black CZ, Pink Topaz, and Peach Topaz

Natural Gemstones varieties available: email for an estimate

#11

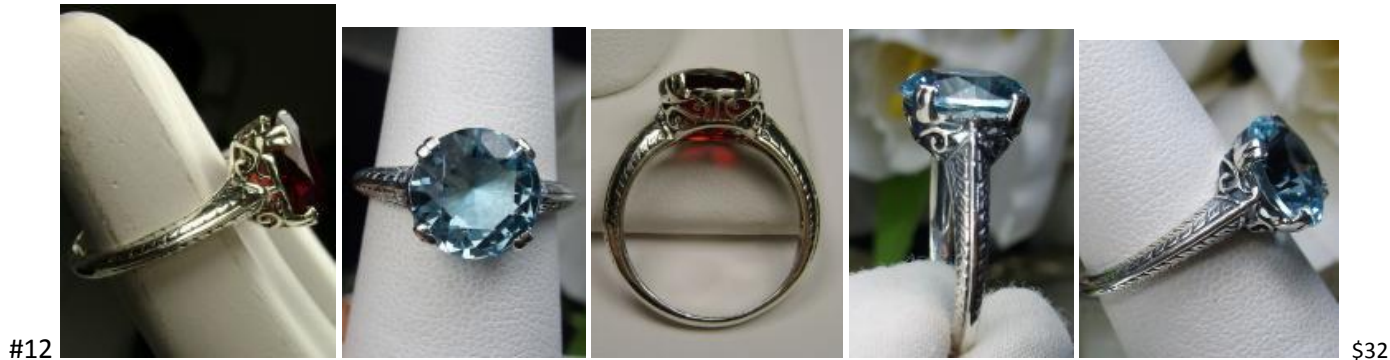


(New-Vic)

This is a stunning Edwardian/Victorian reproduction sterling silver filigree gemstone ring. The flawless gemstone is 8mm in diameter. The inside of the band is marked 925 for sterling. Notice the beautiful craftsmanship of the silver filigree setting and band. This is a ornate and detailed ring. This is a lovely rendition of an antique filigree ring.

Gemstone color options (Man-made/Simulated Gemstones): Green Emerald, Blue Sapphire, Red Ruby, Mystic Topaz, Blue Topaz, Purple Amethyst, Orange Citrine, Yellow Citrine, Swiss Blue Topaz, Green Peridot, Red Garnet, White CZ, Black CZ, Pink Topaz, and Peach Topaz

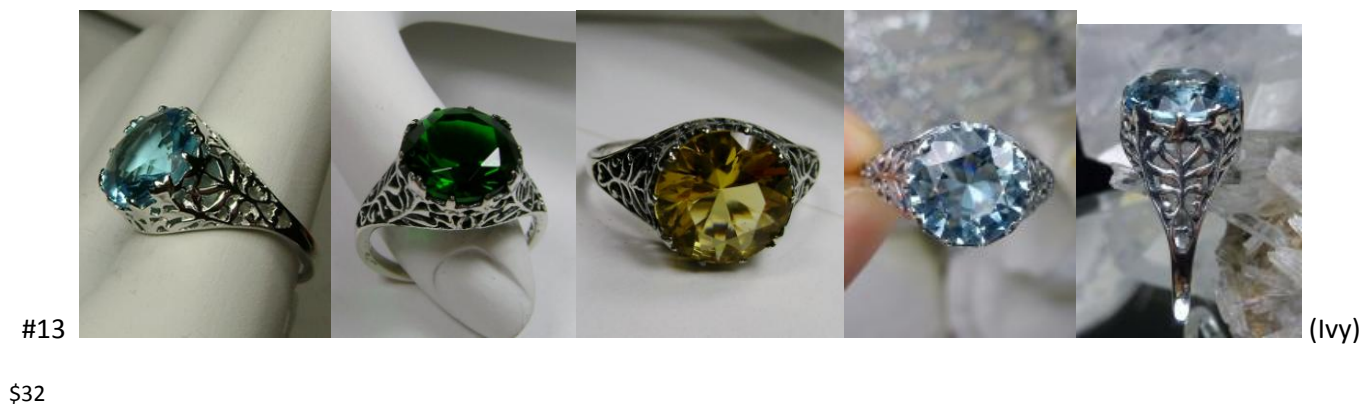
Natural Gemstones varieties available: email for an estimate



This is an Art Deco reproduction solid sterling silver gemstone ring. This captivating gemstone is 10mm in diameter (3/8th"). The inside of the band is marked 925 for sterling. Notice the beautiful craftsmanship of the silver Art Deco filigree setting.

Gemstone color options (Man-made/Simulated Gemstones): Green Emerald, Blue Sapphire, Red Ruby, Mystic Topaz, Blue Topaz, Purple Amethyst, Orange Citrine, Yellow Citrine, Swiss Blue Topaz, Green Peridot, Red Garnet, White CZ, Black CZ, Pink Topaz, and Peach Topaz

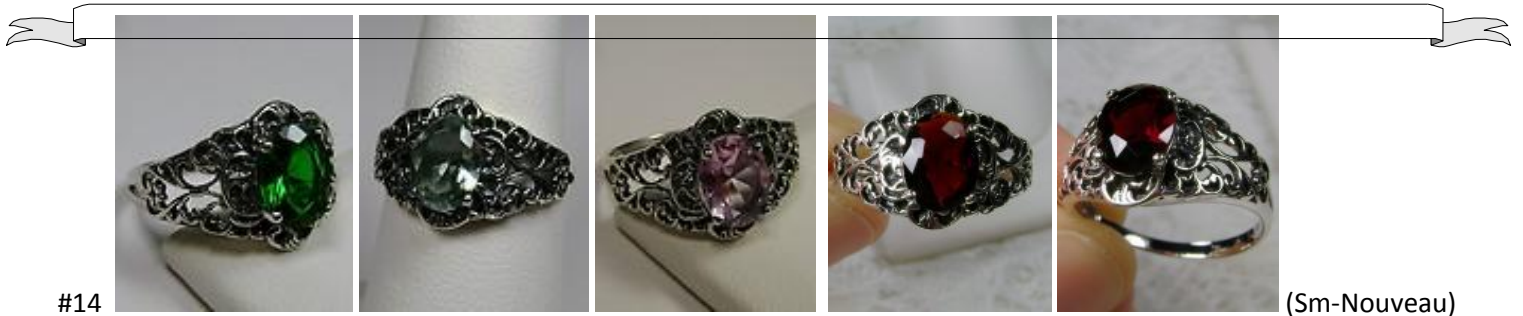
Natural Gemstones varieties available: email for an estimate



This is an Art Nouveau/Victorian sterling silver reproduction. The gorgeous gemstone is 10mm (3/8th of an inch) in diameter. The inside of the band is marked 925. Notice the beautiful crowned leaf/ivy like design of the silver filigree setting.

Gemstone color options (Man-made/Simulated Gemstones): Green Emerald, Blue Sapphire, Red Ruby, Mystic Topaz, Blue Topaz, Purple Amethyst, Orange Citrine, Yellow Citrine, Swiss Blue Topaz, Green Peridot, Red Garnet, White CZ, Black CZ, Pink Topaz, and Peach Topaz

Natural Gemstones varieties available: email for an estimate



#14

(Sm-Nouveau)

\$32

This is a brand new lovely Art Nouveau/Victorian era inspired sterling silver 925 filigree gemstone ring. The flawless oval full cut gem is 8mm (5/16th of an inch) in length by 6mm (1/4th of an inch) in width. The inside of the band is marked 925 for sterling. Notice the beautiful craftsmanship of the silver filigree setting and band. The rich scarlet red color is simply breathtaking.

Gemstone color options (Man-made/Simulated Gemstones): Green Emerald, Blue Sapphire, Red Ruby, Mystic Topaz, Blue Topaz, Purple Amethyst, Orange Citrine, Yellow Citrine, Swiss Blue Topaz, Green Peridot, Red Garnet, White CZ, Black CZ, Pink Topaz, and Peach Topaz

Natural Gemstones varieties available: email for an estimate



#15

(GL)

\$36

Matching pendant and Earrings available

Inspired by the Art Deco movement, I now offer this stunning Antique reproduction in antiqued sterling silver. This lovely ring is set with a 10ct flawless gemstone. The inside of the band is hallmarked 925. This rectangle-cut gemstone is 16mm (5/8th of an inch) by 12mm (1/2 inch) in size. Notice the beautiful floral leaf design of the silver filigree setting and band... simply stunning.

Gemstone color options (Man-made/Simulated Gemstones): Green Emerald, Blue Sapphire, Red Ruby, Mystic Topaz, Blue Topaz, Purple Amethyst, Orange Citrine, Yellow Citrine, Swiss Blue Topaz, Green Peridot, Red Garnet, White CZ, Black CZ, Pink Topaz, and Peach Topaz

Natural Gemstones varieties available: email for an estimate



#16

(Nouveau)

\$34

Inspired by the Art Nouveau movement of the early 1900s, I now offer this lovely reproduction in sterling silver. The gemstone is 8mm (5/16th of an inch) in length by 6mm (1/4th of an inch) in width. The inside of the band is marked 925. Notice the beautiful craftsmanship of the silver filigree setting and band.

Gemstone color options (Man-made/Simulated Gemstones): Green Emerald, Blue Sapphire, Red Ruby, Mystic Topaz, Blue Topaz, Purple Amethyst, Orange Citrine, Yellow Citrine, Swiss Blue Topaz, Green Peridot, Red Garnet, White CZ, Black CZ, Pink Topaz, and Peach Topaz

Natural Gemstones varieties available: email for an estimate



#17

(Bow)

\$30

This is a brand new Art Deco inspired sterling silver 925 filigree gemstone ring. This flawless gemstone is 8mm (5/16th of an inch) in diameter. The inside of the band is marked 925. Notice the beautiful design, and the bow, of the silver filigree setting and band.

Gemstone color options (Man-made/Simulated Gemstones): Green Emerald, Blue Sapphire, Red Ruby, Mystic Topaz, Blue Topaz, Purple Amethyst, Orange Citrine, Yellow Citrine, Swiss Blue Topaz, Green Peridot, Red Garnet, White CZ, Black CZ, Pink Topaz, and Peach Topaz

Natural Gemstones varieties available: email for an estimate



#18

(Sm-Rect)

Inspired by Victorian Era designs, I now offer this exquisite reproduction ring in sterling silver. The rectangular-cut gemstone is 12x10 mm. The band is stamped 925 for sterling.

Gemstone color options (Man-made/Simulated Gemstones): Green Emerald, Blue Sapphire, Red Ruby, Mystic Topaz, Blue Topaz, Purple Amethyst, Orange Citrine, Yellow Citrine, Swiss Blue Topaz, Green Peridot, Red Garnet, White CZ, Black CZ, Pink Topaz, and Peach Topaz

Natural Gemstones varieties available: email for an estimate



#19

(Georgian)

\$34

Inspired by Georgian and Edwardian designs I now offer this stunning Antique reproduction in sterling silver. This gorgeous ring is set with high quality gemstones. The 5 stunning full cut gemstones array the gorgeous setting which is 6mm NS on the finger. The inside of the band is marked 925. Notice the beautiful craftsmanship of the silver filigree setting and band.

Gemstone color options (Man-made/Simulated Gemstones): Green Emerald, Blue Sapphire, Red Ruby, Mystic Topaz, Blue Topaz, Purple Amethyst, Orange Citrine, Yellow Citrine, Swiss Blue Topaz, Green Peridot, Red Garnet, White CZ, Black CZ, Pink Topaz, and Peach Topaz

Natural Gemstones varieties available: email for an estimate



#20

\$32

Inspired by the Arts & Crafts movement and the Art Nouveau period of the early 20th century, I now offer this lovely reproduction filigree ring in sterling silver. This gorgeous ring is set with a 10mm (3/8th of an inch) gemstone. The inside of the band is marked 925 for sterling. Notice the beautiful leaf design of the silver filigree setting and band.

Gemstone color options (Man-made/Simulated Gemstones): Green Emerald, Blue Sapphire, Red Ruby, Mystic Topaz, Blue Topaz, Purple Amethyst, Orange Citrine, Yellow Citrine, Swiss Blue Topaz, Green Peridot, Red Garnet, White CZ, Black CZ, Pink Topaz, and Peach Topaz

Natural Gemstones varieties available: email for an estimate

#21



(Old-Vic)

\$30

This is a lovely brand new and Flawless Victorian/Art Nouveau designed sterling silver 925 filigree gemstone ring. The full cut oval gemstone is 9mm (about 3/8th of an inch) in length by 6mm (1/4th of an inch) in width. The inside of the band is marked 925.

Gemstone color options (Man-made/Simulated Gemstones): Green Emerald, Blue Sapphire, Red Ruby, Mystic Topaz, Blue Topaz, Purple Amethyst, Orange Citrine, Yellow Citrine, Swiss Blue Topaz, Green Peridot, Red Garnet, White CZ, Black CZ, Pink Topaz, and Peach Topaz

Natural Gemstones varieties available: email for an estimate

#22



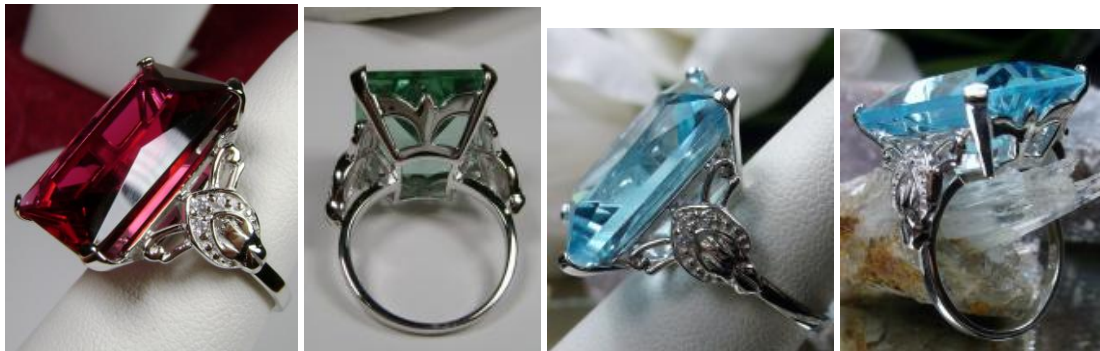
\$25 (man-made gems) \$30 (natural garnet/blue-topaz/rainbow topaz, citrine/amethyst)

This is a brand new Victorian Era reproduction sterling silver 925 filigree gemstone ring. The full cut gemstone is 6mm (1/4th of an inch) in diameter. The inside of the band is marked 925 for sterling. Notice the beautiful crown and tower/trellis design of the silver filigree setting and band.

Gemstone color options (Man-made/Simulated Gemstones): Green Emerald, Blue Sapphire, Red Ruby, Mystic Topaz, Blue Topaz, Purple Amethyst, Orange Citrine, Yellow Citrine, Swiss Blue Topaz, Green Peridot, Red Garnet, White CZ, Black CZ, Pink Topaz, and Peach Topaz

Natural Gemstones varieties available: email for an estimate

#23



(Vintage)

gorgeous ring is a Vintage/Retro reproduction in solid sterling silver. The lovely ring is set with a huge gemstone. The rectangle cut gem is 20mm in length by 15mm in width (approx. 5/8th W inch by 13/16th inch L). The inside of the band is marked 925 for sterling.

Gemstone color options (Man-made/Simulated Gemstones): Green Emerald, Blue Sapphire, Red Ruby, Mystic Topaz, Blue Topaz, Purple Amethyst, Orange Citrine, Yellow Citrine, Swiss Blue Topaz, Green Peridot, Red Garnet, White CZ, Black CZ, Pink Topaz, and Peach Topaz



#24

(Sm-Vic-Sp)

\$35

This is an exquisite reproduction of an Antique Victorian ring. This filigree sterling silver ring is set with a flawless gemstone. This oval cut gmstone is 8mm (5/16th of an inch) in length by 6mm (1/4th of an inch) in width. The 4 seed pearls are 2mm each. The ring sits 15.5mm NS on the finger. The inside of the band is marked 925 for sterling.

Gemstone color options (Man-made/Simulated Gemstones): Green Emerald, Blue Sapphire, Red Ruby, Mystic Topaz, Blue Topaz, Purple Amethyst, Orange Citrine, Yellow Citrine, Swiss Blue Topaz, Green Peridot, Red Garnet, White CZ, Black CZ, Pink Topaz, and Peach Topaz

Natural Gemstones varieties available: email for an estimate



25

(Bouton)

\$34

This is a lovely Victorian era reproduction ring in solid sterling silver. The gorgeous filigree ring is set with 3 round cut gemstones. The 2 smaller gems are 3mm in diameter; and the center gem is 4mm in diameter. The ring sits 5/8th" NS on the finger. The quality of the ring is simply breathtaking... a ring that will last for countless years to come... The inside of the ring band is stamped 925 for sterling.

Gemstone color options (Man-made/Simulated Gemstones): Green Emerald, Blue Sapphire, Red Ruby, Mystic Topaz, Blue Topaz, Purple Amethyst, Orange Citrine, Yellow Citrine, Swiss Blue Topaz, Green Peridot, Red Garnet, White CZ, Black CZ, Pink Topaz, and Peach Topaz

Natural Gemstones varieties available: email for an estimate

#26 (Fave)

\$35

This is a rare design Victorian era reproduction ring in solid sterling silver. The gorgeous filigree ring is set with 3 round cut gemstones. The 2 smaller gemstones are 3mm in diameter; and the center gem is 4mm in diameter. This filigree setting is a casting from an actual Antique ring; notice the amazing etched band... The ring sits 1" NS on the finger. The quality of the silver and gemstones is simply breathtaking... a ring that will last for countless years to come... The inside of the ring band is hallmarked 925.

Gemstone color options (Man-made/Simulated Gemstones): Green Emerald, Blue Sapphire, Red Ruby, Mystic Topaz, Blue Topaz, Purple Amethyst, Orange Citrine, Yellow Citrine, Swiss Blue Topaz, Green Peridot, Red Garnet, White CZ, Black CZ, Pink Topaz, and Peach Topaz

Natural Gemstones varieties available: email for an estimate

#27(Flower)

9mm Round \$32

This is a lovely Antique Reproduction filigree sterling silver filigree ring. This flawless high quality gemstone is 9mm (3/8th of an inch) in diameter. The inside of the band is marked 925 for sterling. Notice the beautiful floral design of the silver filigree setting and band

Gemstone color options (Man-made/Simulated Gemstones): Green Emerald, Blue Sapphire, Red Ruby, Mystic Topaz, Blue Topaz, Purple Amethyst, Orange Citrine, Yellow Citrine, Swiss Blue Topaz, Green Peridot, Red Garnet, White CZ, Black CZ, Pink Topaz, and Peach Topaz

Natural Gemstones varieties available: email for an estimate

#28 \$36

red by Victorian and Art Deco designs I now offer this Antique reproduction in solid sterling silver. This gorgeous ring is set with a 8ct pear gemstone. The gem is 16mm (approx. 5/8th of an inch) by 12mm (just shy of 1/2th inch) in dimension... The inside of the band is marked 925 for sterling. Notice the beautiful filigree swirl like craftsmanship of the silver setting.

Gemstone color options (Man-made/Simulated Gemstones): Green Emerald, Blue Sapphire, Red Ruby, Mystic Topaz, Blue Topaz, Purple Amethyst, Orange Citrine, Yellow Citrine, Swiss Blue Topaz, Green Peridot, Red Garnet, White CZ, Black CZ, Pink Topaz, and Peach Topaz

Natural Gemstones varieties available: email for an estimate



#29

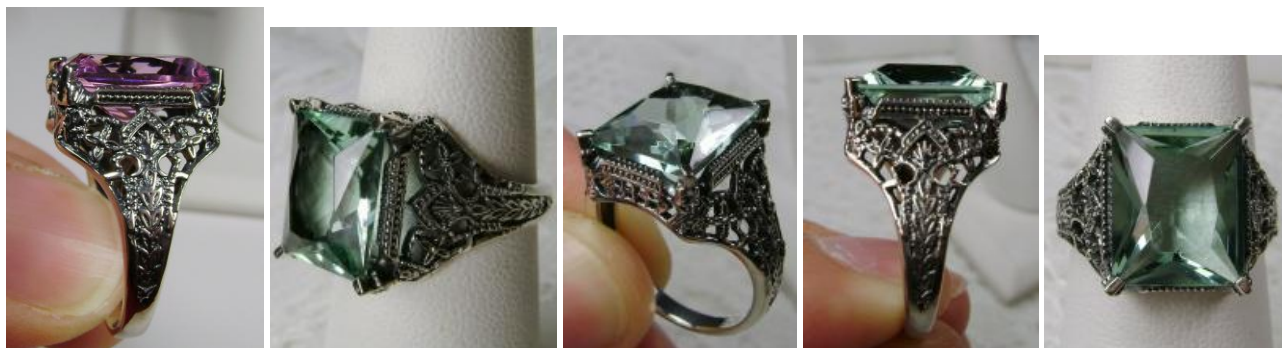
13mm Round Cut Ring (Princess)

\$36

Inspired by Georgian and Victorian era filigree designs, I now offer this stunning reproduction in sterling silver. This fabulous ring is set with a 13mm (1/2th of an inch) in diameter gemstone. The inside of the band is stamped 925 for sterling. Notice the beautiful intricate leaf prongs and flower crown like design of the silver filigree setting and band.

Gemstone color options (Man-made/Simulated Gemstones): Green Emerald, Blue Sapphire, Red Ruby, Mystic Topaz, Blue Topaz, Purple Amethyst, Orange Citrine, Yellow Citrine, Swiss Blue Topaz, Green Peridot, Red Garnet, White CZ, Black CZ, Pink Topaz, and Peach Topaz

Natural Gemstones varieties available: email for an estimate



#30

\$35

This is a gorgeous etched filigree late Victorian reproduction in antiqued sterling silver. The lovely ring is set with a flawless gemstone. The rectangle-cut gemstone is 12mm long by 10mm wide. The inside of the band is marked 925 for sterling. Notice the intricate and detailed etched design of the silver filigree setting and band.

Gemstone color options (Man-made/Simulated Gemstones): Green Emerald, Blue Sapphire, Red Ruby, Mystic Topaz, Blue Topaz, Purple Amethyst, Orange Citrine, Yellow Citrine, Swiss Blue Topaz, Green Peridot, Red Garnet, White CZ, Black CZ, Pink Topaz, and Peach Topaz

Natural Gemstones varieties available: email for an estimate

#31



18mmx9mm Gem

\$35

Inspired by the intricate late Victorian designs, early Edwardian, I now offer this gorgeous filigree Art Deco reproduction in sterling silver. The baguette rectangle-cut gemstone is 18mm long by 9mm wide. The ring is 8mm off the finger. The inside of the band is marked 925 for sterling. Notice the intricate and detailed design of the silver filigree setting and band.

Gemstone color options (Man-made/Simulated Gemstones): Green Emerald, Blue Sapphire, Red Ruby, Mystic Topaz, Blue Topaz, Purple Amethyst, Orange Citrine, Yellow Citrine, Swiss Blue Topaz, Green Peridot, Red Garnet, White CZ, Black CZ, Pink Topaz, and Peach Topaz

Natural Gemstones varieties available: email for an estimate

#32



(Baguette) 18mmx9mm Gem

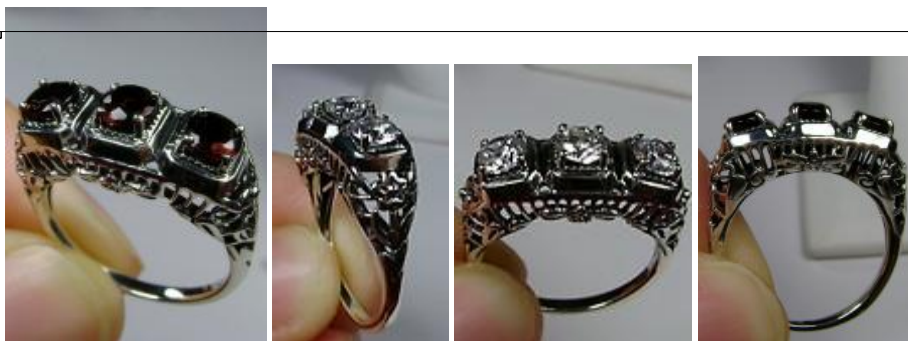
\$36

Inspired by the intricate Victorian & Art Nouveau designs, I now offer this gorgeous filigree Antique reproduction in sterling silver. The baguette rectangle-cut gemstone is 18mm long by 9mm wide. The ring is 8mm of the finger. The inside of the band is marked 925 for sterling. Notice the intricate and floral design of the silver filigree setting and band.

Gemstone color options (Man-made/Simulated Gemstones): Green Emerald, Blue Sapphire, Red Ruby, Mystic Topaz, Blue Topaz, Purple Amethyst, Orange Citrine, Yellow Citrine, Swiss Blue Topaz, Green Peridot, Red Garnet, White CZ, Black CZ, Pink Topaz, and Peach Topaz

Natural Gemstones varieties available: email for an estimate

#33



(Horizontal-Vic)

\$36

Inspired by Edwardian era designs, I now offer this exquisite reproduction ring in sterling silver. The round cut gemstones are 4.5mm. The 3 stones together, east west on the finger, are 18mm (3/4th of an inch) across. Notice the etched flowers on each side of the ring. The band is hallmarked 925 for sterling.

Gemstone color options (Man-made/Simulated Gemstones): Green Emerald, Blue Sapphire, Red Ruby, Mystic Topaz, Blue Topaz, Purple Amethyst, Orange Citrine, Yellow Citrine, Swiss Blue Topaz, Green Peridot, Red Garnet, White CZ, Black CZ, Pink Topaz

Natural Gemstones varieties available: email for an estimate

#34



Victorian Ring (Pavé)

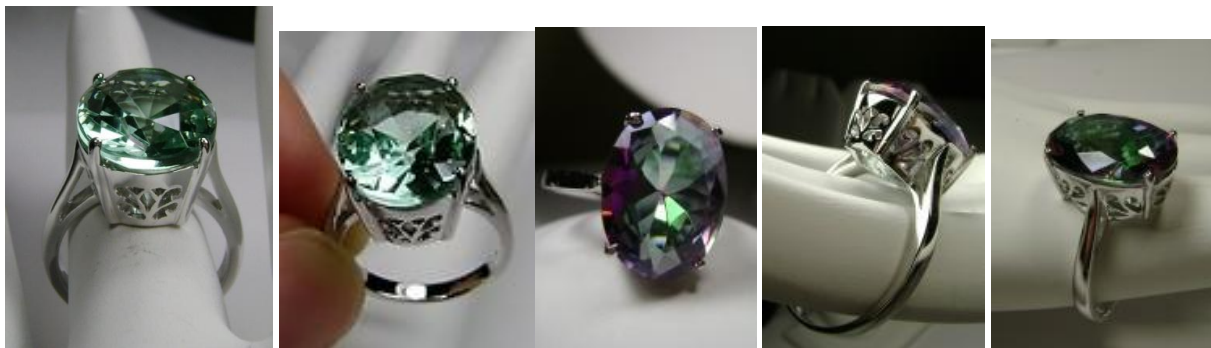
\$35.00

This is an exquisite reproduction of an Antique Victorian ring. This filigree sterling silver ring is set with flawless gems.. The ring sits 16mm (5/8") NS on the finger. The inside of the band is marked 925 for sterling. Notice the beautiful craftsmanship of the silver filigree setting and band.

Gemstone color options (Man-made/Simulated Gemstones): Green Emerald, Blue Sapphire, Red Ruby, Blue Topaz/Aquamarine, Purple Amethyst, Orange Citrine, Yellow Citrine, Red Garnet, White CZ, Black CZ, Pink Topaz

Natural Gemstones varieties available: email for an estimate

#35



(Oval)

\$ \$36.00

Marching pendant and Earrings available

is a brand new Stunning Art Nouveau/Victorian inspired sterling silver filigree gemstone ring. The Flawless oval full cut gem is 16mm (5/8 an inch) by 12mm (1/2 inch) in dimension. The inside of the band is marked 925. Notice the beautiful filigree swirl like craftsmanship of the silver setting.

Gemstone color options (Man-made/Simulated Gemstones): Green Emerald, Blue Sapphire, Red Ruby, Mystic Topaz, Blue Topaz, Purple Amethyst, Orange Citrine, Yellow Citrine, Swiss Blue Topaz, Green Peridot, Red Garnet, White CZ, Black CZ, Pink Topaz, and Peach Topaz

Natural Gemstones varieties available: email for an estimate



#36

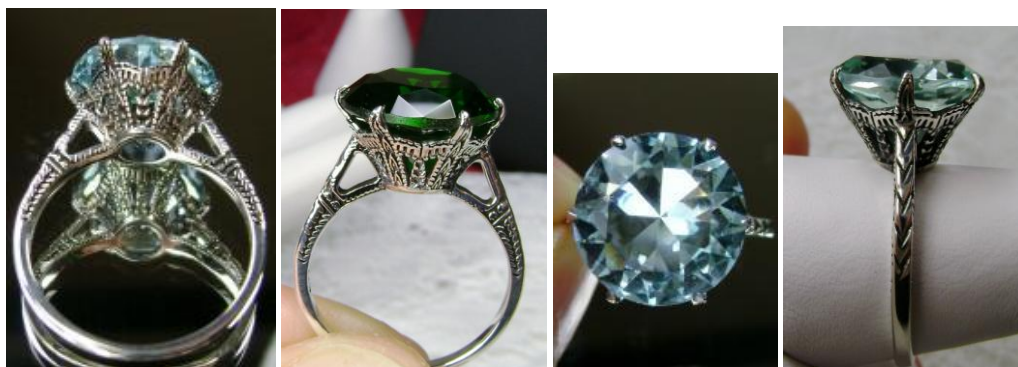
10mmx8mm Center Gem

36.00+

Inspired by Edwardian era designs, I now offer this exquisite reproduction ring in sterling silver. The full cut oval center gem is 10mm (8/8th of an inch long), the gems on the side are 8mm (5/16th of an inch long). The 3 stones together, east west on the finger, are 20mm (13/16th of an inch) across. The band is hallmarked 925 for sterling

Gemstone color options (Man-made/Simulated Gemstones): Green Emerald, Blue Sapphire, Red Ruby, Mystic Topaz, Blue Topaz, Purple Amethyst, Orange Citrine, Yellow Citrine, Swiss Blue Topaz, Green Peridot, Red Garnet, White CZ, Black CZ, Pink Topaz, and Peach Topaz

Natural Gemstones varieties available: email for an estimate



37

\$36

This is a brand new Edwardian reproduction filigree ring in antiqued solid sterling silver. The brilliant full cut high quality gemstone is 13mm (1/2th of an inch) in diameter. ALSO AVAILABLE IN A 9MM GEM for \$30. The inside of the band is marked 925 for sterling. Notice the beautiful intricate crown like design of the silver filigree setting and etched band. The original ring I bought in this exact design was from 1910. This is a rare and exact replica of that ring.

Gemstone color options (Man-made/Simulated Gemstones): Green Emerald, Blue Sapphire, Red Ruby, Mystic Topaz, Blue Topaz, Purple Amethyst, Orange Citrine, Yellow Citrine, Swiss Blue Topaz, Green Peridot, Red Garnet, White CZ, Black CZ, Pink Topaz, and Peach Topaz

Natural Gemstones varieties available: email for an estimate (13mm or 9mm gem options)

#38



(new-bow)

\$34

This is an Art Nouveau/Deco reproduction ring in sterling silver 925 set with a stunning 3ct M-made gemstone. The round full cut gemstone is 10mm in diameter (3/8th"). The inside of the band is marked 925 for sterling. Notice the beautiful craftsmanship of the silver filigree setting. This is an exquisite rendition of an antique of ring... and is ready to wear.

Gemstone color options (Man-made/Simulated Gemstones): Green Emerald, Blue Sapphire, Red Ruby, Mystic Topaz, Blue Topaz, Purple Amethyst, Orange Citrine, Yellow Citrine, Swiss Blue Topaz, Green Peridot, Red Garnet, White CZ, Black CZ, Pink Topaz, and Peach Topaz

Natural Gemstones varieties available: email for an estimate

#39



(palissade) (26mmx15mm)

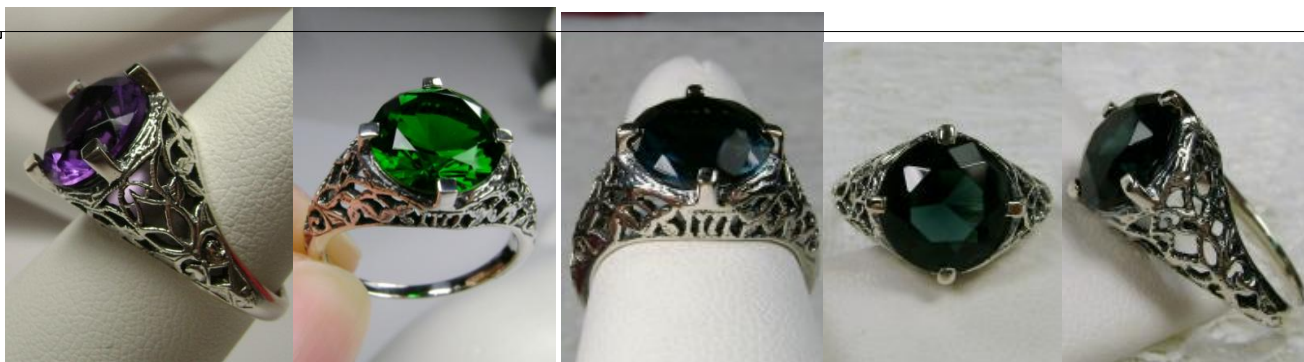
\$37 (CZ gems \$39)

Inspired by Victorian and Art Deco designs I now offer this Antique reproduction in solid sterling silver. This gorgeous ring is set with an 13ct marquise cut gemstone ... The gem is 26mm (1 inch) long by 15mm (9/16th inch) in width... The ring sits 7mm off the finger. The inside of the band is marked 925 for sterling. Notice the beautiful filigree swirl like craftsmanship of the floral silver setting. This is an exquisite rendition of an antique filigree ring, and an amazing deal.

Gemstone color options (Man-made/Simulated Gemstones): Green Emerald, Blue Sapphire, Red Ruby, Mystic Topaz, Blue Topaz, Purple Amethyst, Orange Citrine, Yellow Citrine, Swiss Blue Topaz, Green Peridot, Red Garnet, White CZ, Black CZ, Pink Topaz, and Peach Topaz

Natural Gemstones varieties available: email for an estimate

#40



(AA)

\$34

This is a brand new Art Nouveau/Victorian reproduction solid sterling silver 925 floral leaf filigree ring. The Flawless approximately 4ct full gemstone is 10mm (3/8th of an inch) in diameter. The inside of the band is hallmarked 925 for sterling. Notice the beautiful intricate floral/leaf-like design of the silver filigree setting and band.

Gemstone color options (Man-made/Simulated Gemstones): Green Emerald, Blue Sapphire, Red Ruby, Mystic Topaz, Blue Topaz, Purple Amethyst, Orange Citrine, Yellow Citrine, Swiss Blue Topaz, Green Peridot, Red Garnet, White CZ, Black CZ, Pink Topaz, and Peach Topaz

Natural Gemstones varieties available: email for an estimate

#41



\$35

This is a high quality Edwardian reproduction filigree ring in sterling silver. This filigree 3 stone cocktail ring is set with 3 flawless gemstones. The full cut gem in the center is 8mm x 6mm (5/16th" L x 1/4th" W). The 2 gemstones on the side are 7mm x 5mm, (just over 1/4th" L x 3/16th" W). The 3 stones together, east west on the finger, are 17mm (11/16th of an inch) across. The inside of the band is marked 925 for sterling. Notice the beautiful filigree swirl/floral like craftsmanship of the silver setting.

Gemstone color options (Man-made/Simulated Gemstones): Green Emerald, Blue Sapphire, Red Ruby, Mystic Topaz, Blue Topaz, Purple Amethyst, Orange Citrine, Yellow Citrine, Swiss Blue Topaz, Green Peridot, Red Garnet, White CZ, Black CZ, Pink Topaz, and Peach Topaz

Natural Gemstones varieties available: email for an estimate

#42 (Oval-trellis)

\$30+

This is a beautiful sterling silver 925 filigree gemstone ring. The full cut oval flawless gemstone is 14mm (9/16th of an inch) by 10mm (3/8th inch) in dimension. The inside of the band is marked 925 for sterling. Notice the intricate craftsmanship of the silver trellis style filigree setting/band.

Gemstone color options (Man-made/Simulated Gemstones): Green Emerald, Blue Sapphire, Red Ruby, Mystic Topaz, Blue Topaz, Purple Amethyst, Orange Citrine, Yellow Citrine, Swiss Blue Topaz, Green Peridot, Red Garnet, White CZ, Black CZ, Pink Topaz, and Peach Topaz

Natural Gemstones varieties available: email for an estimate

#43 (4ct Tear Ring) \$25

This is a brand new Art Nouveau/Victorian inspired filigree sterling silver 925 (approx. 4ct) tear drop shaped gem ring. This captivating tear drop (or pear shaped) gemstone is 13mm in length (1/2 inch) by 8mm in width (5/16th of an inch). The inside of the band is marked 925. Notice the beautiful craftsmanship of the silver filigree setting. The stone has breathtaking shine, color and clarity.

Gemstone color options (Man-made/Simulated Gemstones): Green Emerald, Blue Sapphire, Red Ruby, Mystic Topaz, Blue Topaz, Purple Amethyst, Orange Citrine, Yellow Citrine, Swiss Blue Topaz, Green Peridot, Red Garnet, White CZ, Black CZ, Pink Topaz, and Peach Topaz

Natural Gemstones varieties available: email for an estimate

#44



(Rect-Trellis) \$26

This is a brand new Art Deco inspired solid sterling silver 925 filigree gemstone ring. The rectangle-cut flawless Man-made gem is 11mm long by 9mm wide. The inside of the band is marked 925. Notice the intricate and detailed Art Deco design of the silver filigree setting

Gemstone color options (Man-made/Simulated Gemstones): Green Emerald, Blue Sapphire, Red Ruby, Mystic Topaz, Blue Topaz, Purple Amethyst, Orange Citrine, Yellow Citrine, Swiss Blue Topaz, Green Peridot, Red Garnet, White CZ, Black CZ, Pink Topaz, and Peach Topaz

Natural Gemstones varieties available: email for an estimate

#45



(Square)

\$36+

Marching pendant and Earrings available

This is a brand new Vintage revival solid sterling silver filigree gemstone ring. The square-cut gemstone is 15mm (about 9/16th of an inch) in length and 15mm in width... The inside of the band is marked 925 for sterling. Notice the beautiful swirl/heart like craftsmanship of the silver filigree setting.

Gemstone color options (Man-made/Simulated Gemstones): Green Emerald, Blue Sapphire, Red Ruby, Mystic Topaz, Blue Topaz, Purple Amethyst, Orange Citrine, Yellow Citrine, Swiss Blue Topaz, Green Peridot, Red Garnet, White CZ, Black CZ, Pink Topaz, and Peach Topaz

Natural Gemstones varieties available: email for an estimate

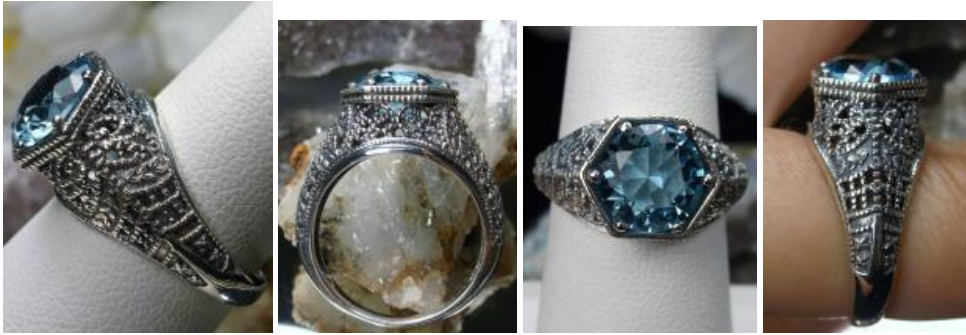
#46



Inspired by the intricate Victorian designs of the late 1800s, I now offer this gorgeous filigree Antique reproduction in sterling silver. The lovely ring is set with a flawless 3ct Man-made gemstone. The emerald-cut gemstone is 11mm long by 9mm wide. The inside of the band is marked 925 for sterling. Notice the intricate and detailed etched design of the silver filigree setting and band. This is an exquisite rendition of an antique filigree ring.... and is ready to wear.

Gemstone color options (Man-made/Simulated Gemstones): Green Emerald, Blue Sapphire, Red Ruby, Mystic Topaz, Blue Topaz/Aquamarine, Purple Amethyst, Orange Citrine, Yellow Citrine, Swiss Blue Topaz, Green Peridot, Red Garnet, White CZ, Black CZ, Pink Topaz

Natural Gemstones varieties available: email for an estimate



#47

(Tall Vic) (8mm)

\$35

This is a stunning Edwardian/Victorian reproduction in sterling silver filigree set with a 3ct flawless simulated/Man-made gemstone. The gem is 9mm in diameter (just shy of 3/8th"). The ring sits 9mm off the finger. The inside of the band is marked 925 for sterling. Notice the beautiful craftsmanship of the silver filigree setting and band. This is an ornate and detailed filigree ring.

Gemstone color options (Man-made/Simulated Gemstones): Green Emerald, Blue Sapphire, Red Ruby, Mystic Topaz, Blue Topaz, Purple Amethyst, Orange Citrine, Yellow Citrine, Swiss Blue Topaz, Green Peridot, Red Garnet, White CZ, Black CZ, Pink Topaz, and Peach Topaz

Natural Gemstones varieties available: email for an estimate



#48

2ct Oval Fleur-de-lis

\$34

Inspired by Victorian and Art Deco designs, I now offer this gorgeous reproduction in sterling silver. This lovely filigree ring is set with an oval cut gemstone, the gem is 6mm (1/4th of an inch) NS by 8mm EW on the finger. The inside of the band is marked 925 for sterling. Notice the beautiful floral fleur design of the silver filigree setting and band.

Gemstone color options (Man-made/Simulated Gemstones): Green Emerald, Blue Sapphire, Red Ruby, Mystic Topaz, Blue Topaz/Aquamarine, Purple Amethyst, Orange Citrine, Yellow Citrine, Swiss Blue Topaz, Green Peridot, Red Garnet, White CZ, Black CZ, Pink Topaz, and Peach Topaz

Natural Gemstones varieties available: email for an estimate



#49

Deco Band Ring

\$35

Inspired by Victorian and Art Deco designs, I now offer this gorgeous reproduction in sterling silver. There are 2 CZ's on each side of the center gemstone, they are 1mm each. The full cut center gem is 4.5mm (3/16th of an inch) in diameter. The inside of the band is marked 925 for sterling. Notice the beautiful floral fleur design of the silver filigree setting and band.

Gemstone color options (Man-made/Simulated Gemstones): Green Emerald, Blue Sapphire, Red Ruby, Mystic Topaz, Blue Topaz/Aqua, Purple Amethyst, Orange Citrine, Yellow Citrine, Swiss Blue Topaz, Green Peridot, Red Garnet, White CZ, Black CZ, Pink Topaz

Natural Gemstones varieties available: email for an estimate



#50

(Trillion) \$39.99

This is a lovely late Victorian era revival ring in solid sterling silver. The gorgeous filigree ring is set with 2 trillion cut gemstones. The 2 gemstones are 9mm x 9mm x 9mm in dimension. This filigree setting is a casting from an actual Antique ring; notice the amazing filigree band and setting... The ring sits 7/8th" (22mm) NS on the finger. The quality of the silver and gemstones are simply breathtaking... a ring that will last for countless years to come... The inside of the ring band is hallmarked 925 for sterling.

Gemstone color options (Man-made/Simulated Gemstones): Green Emerald, Blue Sapphire, Red Ruby, Aquamarine, Purple Amethyst, Orange Citrine, Red Garnet, White CZ, Black CZ

Natural Gemstones varieties available: email for an estimate



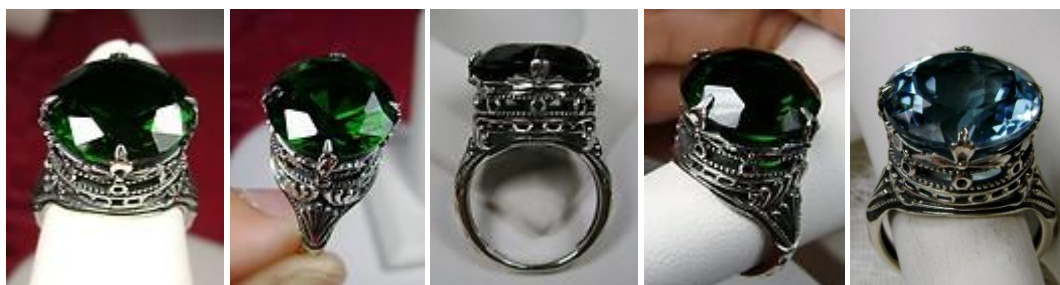
#51

(XT) (22mmx16mm)

This is a brand new Vintage Reproduction solid sterling silver filigree huge gemstone ring. The tear drop gem is 16mm (approx. 11/16th of an inch) by 22mm (7/8th inch) in dimension... The inside of the band is marked 925 for sterling. Notice the beautiful filigree swirl like craftsmanship of the silver setting. This is an exquisite rendition of an antique/Vintage filigree ring.

Gemstone color options (Man-made/Simulated Gemstones): Green Emerald, Blue Sapphire, Red Ruby, Mystic Topaz, Blue Topaz/Aqua, Purple Amethyst, Orange Citrine, Yellow Citrine, Swiss Blue Topaz, Green Peridot, Red Garnet, White CZ, Black CZ, Pink Topaz

Natural Gemstones varieties available: email for an estimate



#52

\$37

Inspired by Georgian and Victorian era filigree designs, I now offer this fancy reproduction in sterling silver. The full cut gemstone is 15mm (5/8th of an inch) in diameter. The ring sits an amazing 12mm off the finger... a ring with a presence! The inside of the band is marked 925 for sterling. Notice the beautiful intricate leaf prongs and flower crown like design of the silver filigree setting and band.

Gemstone color options (Man-made/Simulated Gemstones): Green Emerald, Blue Sapphire, Red Ruby, Mystic Topaz, Blue Topaz, Purple Amethyst, Orange Citrine, Yellow Citrine, Swiss Blue Topaz, Green Peridot, Red Garnet, White CZ, Black CZ, Pink Topaz, and Peach Topaz

Natural Gemstones varieties available: email for an estimate



#53

(Ft.Mq)

\$37

This is a stunning Victorian/Deco reproduction in sterling silver filigree set with a flawless marquise cut simulated/man-made gemstone. The gemstone is 16mm in long NS by 12mm wide, the ring sits 8mm off the finger. The inside of the band is marked 925 for sterling. Notice the beautiful craftsmanship of the silver filigree setting and band. This is an ornate and detailed filigree ring.

Gemstone color options (Man-made/Simulated Gemstones): Green Emerald, Blue Sapphire, Red Ruby, Mystic Topaz, Blue Topaz, Purple Amethyst, Orange Citrine, Yellow Citrine, Swiss Blue Topaz, Green Peridot, Red Garnet, White CZ, Black CZ, Pink Topaz, and Peach Topaz

Natural Gemstones varieties available: email for an estimate

#54



(Round-Vic)

\$36

This is a brand new Art Deco inspired solid sterling silver 925 filigree ring. The round full cut high quality Man-Made gemstone is 13mm (1/2th of an inch) in diameter. The inside of the band is marked 925 for sterling. Notice the beautiful intricate design of the silver filigree setting and band. This is a lovely new, well made, and charming ring; and it is ready to wear.

Gemstone color options (Man-made/Simulated Gemstones): Green Emerald, Blue Sapphire, Red Ruby, Mystic Topaz, Blue Topaz, Purple Amethyst, Orange Citrine, Yellow Citrine, Swiss Blue Topaz, Green Peridot, Red Garnet, White CZ, Black CZ, Pink Topaz, and Peach Topaz

Natural Gemstones varieties available: email for an estimate

#55



\$38

This is a stunning Victorian reproduction in sterling silver filigree set with a flawless marquise gemstone. The bezel set gemstone is 12mm in long NS by 6mm wide, the ring sits 6mm off the finger. The inside of the band is marked 925 for sterling. Notice the beautiful craftsmanship of the silver filigree setting and band. This is an ornate and detailed filigree ring.

Gemstone color options (Man-made/Simulated Gemstones): Green Emerald, Blue Sapphire, Red Ruby, Mystic Topaz, Blue Topaz/Aquamarine, Purple Amethyst, Orange Citrine, Yellow Citrine, Green Peridot, Red Garnet, White CZ, Black CZ

Natural Gemstones varieties available: email for an estimate

#56



(8mmx6mm)

\$29

red by the filigree designs of the Victorian Era. I now offer this lovely reproduction ring in sterling silver. This adorable ring is set with an approximately 1ct gemstone. The oval full cut gemstone is 8mm (5/16th of an inch) by 6mm (1/4th inch) in diameter. The inside of the band is marked 925 for sterling. Notice the beautiful etched like design of the silver filigree setting and band.

Gemstone color options (Man-made/Simulated Gemstones): Green Emerald, Blue Sapphire, Red Ruby, Mystic Topaz, Blue Topaz/Aqua, Purple Amethyst, Orange Citrine, Yellow Citrine, Swiss Blue Topaz, Green Peridot, Red Garnet, White CZ, Black CZ, Pink Topaz

Natural Gemstones varieties available: email for an estimate



\$38

Inspired by the Art Nouveau movement of the early 20th century; I now offer this amazing Art Nouveau reproduction ring in sterling silver. This stunning flawless 5ct man-made/simulated gemstone is 9mm NS in length and 11mm EW in width. The ring sits 7.5mm off the finger. The inside of the band is marked 925 for sterling. Notice the beautiful leaf ivy design of the silver filigree setting and band. This is an exquisite rendition of an Antique filigree ring.....

Gemstone color options (Man-made/Simulated Gemstones): Green Emerald, Blue Sapphire, Red Ruby, Mystic Topaz, Blue Topaz, Purple Amethyst, Orange Citrine, Yellow Citrine, Swiss Blue Topaz, Green Peridot, Red Garnet, White CZ, Black CZ, Pink Topaz, and Peach Topaz

Natural Gemstones varieties available: email for an estimate



\$36+

This is a brand new simply gorgeous Vintage design sterling silver 925 filigree gemstone ring. The inside of the band is marked 925. This rectangle cut gemstone is 16mm (5/8th of an inch) by 12mm (1/2 inch) in size. Notice the beautiful swirl/heart like design of the silver filigree setting.

Gemstone color options (Man-made/Simulated Gemstones): Green Emerald, Blue Sapphire, Red Ruby, Mystic Topaz, Blue Topaz, Purple Amethyst, Orange Citrine, Yellow Citrine, Swiss Blue Topaz, Green Peridot, Red Garnet, White CZ, Black CZ, Pink Topaz, and Peach Topaz

Natural Gemstones varieties available: email for an estimate

Marching pendant and Earrings available

#59



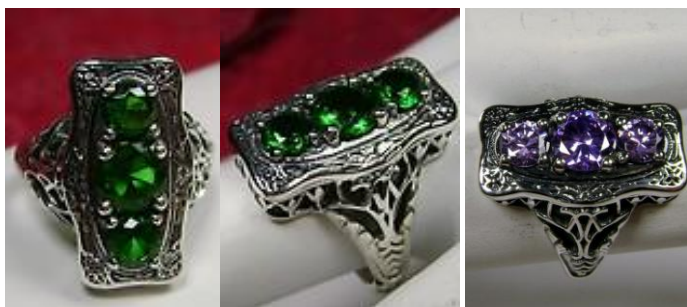
15mm (Heart-Vic) \$38

Inspired by the Art Deco movement, I now offer this stunning Antique reproduction in antiqued sterling silver. This lovely ring is set with an approximately 10ct gemstone. The inside of the band is hallmarked 925 for sterling. This heart gemstone is 15mm x 15mm. The rings sits 10mm off the finger. Notice the beautiful Deco design of the silver filigree setting and band... simply stunning. This is an exquisite rendition of an antique filigree ring

Gemstone color options (Man-made/Simulated Gemstones): Green Emerald, Blue Sapphire, Red Ruby, Mystic Topaz, Sky Blue Topaz, Purple Amethyst, Orange Citrine, Yellow Citrine, Swiss Blue Topaz, Green Peridot, Red Garnet, White CZ, Black CZ, Pink Topaz, and Peach Topaz

Natural Gemstones varieties available: email for an estimate

#60



(3stone-rect)

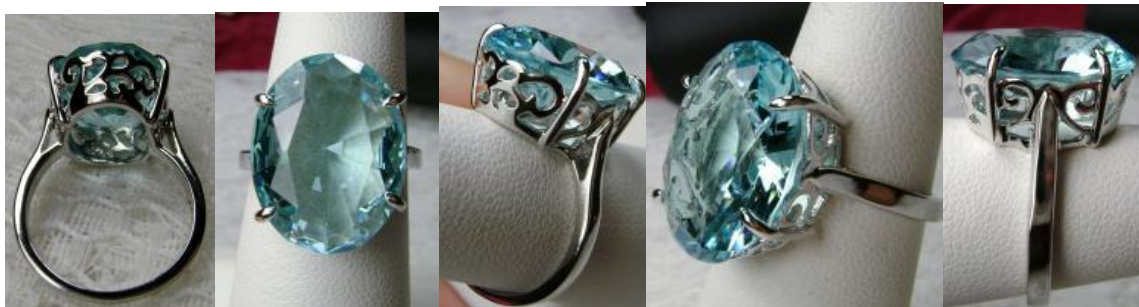
\$37

This is a lovely late Victorian era reproduction ring in solid sterling silver. The gorgeous filigree ring is set with 3 round cut gemstones. The 2 smaller gemstones are 4.5mm in diameter; and the center gem is 6mm in diameter. Notice the amazing etched band... The ring sits 3/4th" (19mm) NS on the finger. The quality of the ring simply breathtaking... a ring that will last for countless years to come... The inside of the ring band is hallmarked 925 for sterling.

Gemstone color options (Man-made/Simulated Gemstones): Green Emerald, Blue Sapphire, Red Ruby, Mystic Topaz, Sky Blue Topaz, Purple Amethyst, Orange Citrine, Yellow Citrine, Swiss Blue Topaz, Green Peridot, Red Garnet, White CZ, Black CZ, Pink Topaz

Natural Gemstones varieties available: email for an estimate

#61



19x14

\$36

This is a brand new Vintage reproduction solid sterling silver filigree ring. The high gemstone is 19mm (3/4th of an inch) by 14mm (9/16th inch) in dimension... The inside of the band is marked 925 for sterling. Notice the beautiful filigree swirl like craftsmanship of the silver setting. This is an exquisite modern rendition of an antique filigree ring, and an amazing deal.

stone color options (Man-made/Simulated Gemstones): Green Emerald, Blue Sapphire, Red Ruby, Mystic Topaz, Blue Topaz/Aqua, Purple Amethyst, Orange Citrine, Yellow Citrine, Swiss Blue Topaz, Green Peridot, Red Garnet, White CZ, Black CZ, Pink Topaz

Natural Gemstones varieties available: email for an estimate



#62

(11mmx9mm)

\$35

Inspired by Art Nouveau and Victorian era jewelry, I now offer this lovely reproduction in sterling silver. This gorgeous ring is set with a new oval cut gemstone. The full cut gemstone is 11mm (7/16th inch) L by 9mm W (3/8th"). The ring sits 6mm off the finger. The inside of the band is marked 925 for sterling. Notice the beautiful leaf design of the filigree band and setting.

Gemstone color options (Man-made/Simulated Gemstones): Green Emerald, Blue Sapphire, Red Ruby, Mystic Topaz, Blue Topaz/Aqua, Purple Amethyst, Orange Citrine, Yellow Citrine, Swiss Blue Topaz, Green Peridot, Red Garnet, White CZ, Black CZ, Pink Topaz, and Peach Topaz

Natural Gemstones varieties available: email for an estimate



#63

\$39.99

This is a lovely late Victorian, early Edwardian, era reproduction ring in solid sterling silver. The gorgeous filigree ring is set with 3 round cut gemstones. The 2 smaller peripheral gemstones are 3mm in diameter; and the center one is 4.5mm in diameter. This filigree setting is a casting from an Antique ring; notice the amazing etched band... The ring sits 13/16th" (21mm) NS on the finger. The quality of the silver and gemstones is simply breathtaking... a ring that will last for countless years to come... The inside of the ring band is hallmarked 925 for sterling

Gemstone color options (Man-made/Simulated Gemstones): Green Emerald, Blue Sapphire, Red Ruby, Mystic Topaz, Blue Topaz/Aqua, Purple Amethyst, Orange Citrine, Yellow Citrine, Green Peridot, Red Garnet, White CZ, Black CZ, Pink Topaz

Natural Gemstones varieties available: email for an estimate

#64 (AAR) 15mmx9mm

\$36

Inspired by the designs of the Art Nouveau period; I now offer this gorgeous sterling silver reproduction ring in sterling silver. The antiqued sterling filigree setting is set with a lovely gemstone. The inside of the band is hallmarked 925 for sterling. This rectangle-cut gemstone is 15mm (about 5/8th of an inch) long by 9mm (3/8th inch) in wide. The ring sits 7mm off the finger. Notice the beautiful Antique floral design of the silver filigree setting and band.

Gemstone color options (Man-made/Simulated Gemstones): Green Emerald, Blue Sapphire, Red Ruby, Mystic Topaz, Blue Topaz/Aqua, Purple Amethyst, Orange Citrine, Yellow Citrine, Swiss Blue Topaz, Green Peridot, Red Garnet, White CZ, Black CZ, Pink Topaz

Natural Gemstones varieties available: email for an estimate

#65 (Oval-Vic)

\$36

This is a brand new stunning Art Deco reproduction filigree ring in antiqued sterling silver. The flawless oval full cut gemstone is 16mm (5/8th of an inch) by 12mm (1/2 inch) in dimension... The inside of the band is marked 925 for sterling. Notice the beautiful filigree floral craftsmanship of the silver setting.

Gemstone color options (Man-made/Simulated Gemstones): Green Emerald, Blue Sapphire, Red Ruby, Mystic Topaz, Blue Topaz, Purple Amethyst, Orange Citrine, Yellow Citrine, Swiss Blue Topaz, Green Peridot, Red Garnet, White CZ, Black CZ, Pink Topaz, and Peach Topaz

Natural Gemstones varieties available: email for an estimate



#66 (Daisy)

(8mm)

\$32

Inspired by Victorian era designs, I now offer this lovely reproduction filigree ring in sterling silver. This gorgeous ring is set with a round full cut gemstone, the gemstone is 8mm (5/16th of an inch) in diameter. The ring measures 12mm NS on the finger. The inside of the band is marked 925 for sterling. Notice the beautiful daisy of the silver filigree setting and band.

Gemstone color options (Man-made/Simulated Gemstones): Green Emerald, Blue Sapphire, Red Ruby, Mystic Topaz, Blue Topaz, Purple Amethyst, Orange Citrine, Yellow Citrine, Swiss Blue Topaz, Green Peridot, Red Garnet, White CZ, Black CZ, Pink Topaz

Natural Gemstones varieties available: email for an estimate



#67

\$36

Inspired by the intricate Gothic & Renaissance designs of centuries past, I now offer this gorgeous filigree Antique inspiration in sterling silver. The lovely ring is set with a flawless 7ct Simulated/Man-Made gemstone. The baguette rectangle-cut gemstone is 18mm long by 9mm wide. The ring is 8mm of the finger. The inside of the band is marked 925 for sterling. Notice the intricate and floral-like design of the silver filigree setting and band.

Gemstone color options (Man-made/Simulated Gemstones): Green Emerald, Blue Sapphire, Red Ruby, Mystic Topaz, Blue Topaz/Aqua, Purple Amethyst, Orange Citrine, Yellow Citrine, Green Peridot, Red Garnet, White CZ, Black CZ, Pink Topaz

Natural Gemstones varieties available: email for an estimate

#68



(Rosey)

\$39.00

Lovely Art Nouveau inspired sterling silver filigree ring. Notice the lovely flowers prongs that surround them gemstone. The gemstone in this ring measures 28mm long (over 1 inch) by 14mm wide (9/16th). The lovely ring sits 9mm off the finger. The setting is stamped 925 for sterling silver.

#69



(9-gem)

\$36

Inspired by the Art Deco movement, I now offer this gorgeous Art Deco 1930s reproduction filigree ring in sterling silver. This ring is marked 925 for solid sterling. This lovely filigree ring is set with 3 central stunning center round cut Simulated/Man-made gemstones; 6mm center, 4mm top/bottom. 6 more round cut 2mm gemstones also grace the sides of the setting. Notice the beautiful design of the silver filigree setting and band. The ring measures 15/16th of an inch NS on the finger (23mm).

Gemstone color options (Man-made/Simulated Gemstones): Green Emerald, Blue Sapphire, Red Ruby, Mystic Topaz, Blue Topaz/Aqua, Purple Amethyst, Orange Citrine, Green Peridot, Red Garnet, White CZ, Black CZ, Pink Topaz

Natural Gemstones varieties available: email for an estimate

#70 (Edward)



\$35

Inspired by Edwardian jewelry of the early 1900s, I now offer this lovely Antique reproduction ring in sterling silver. This gorgeous ring is set with an oval cut gemstone. The gemstone is 14mm (9/16th of an inch) Long by 10mm Wide (3/8th"). The ring sits 6mm off the finger. The inside of the band is marked 925 for sterling. Notice the beautiful Edwardian period floral and swag design of the filigree band and setting

Gemstone color options (Man-made/Simulated Gemstones): Green Emerald, Blue Sapphire, Red Ruby, Mystic Topaz, Blue Topaz/Aqua, Purple Amethyst, Orange Citrine, Yellow Citrine, Swiss Blue Topaz, Green Peridot, Red Garnet, White CZ, Black CZ, Pink Topaz

Natural Gemstones varieties available: email for an estimate



#71

\$39 (prong ring)

This is a brand new, simply stunning, Vintage designed sterling silver 925 filigree gemstone ring. This high quality concave faceted gemstone is 20mm by 15mm in L & W. The inside of the band is marked 925. This is a very fun ring to wear. Notice the beautiful flower like craftsmanship of the silver filigree prong setting.

Gemstone color options (Man-made/Simulated Gemstones): Red Ruby, Mystic Topaz, Purple Amethyst, Orange Citrine, Swiss Blue Topaz, Green Peridot, Pink Topaz



#72 (4stone)

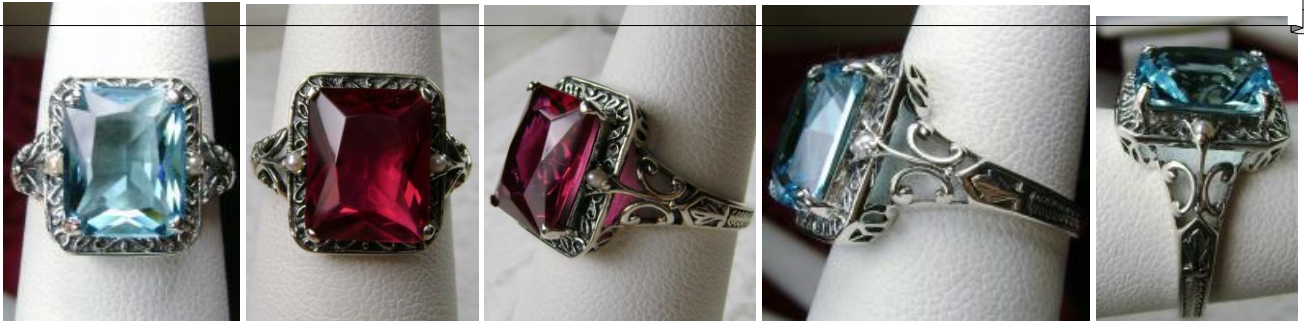
\$35

This is a lovely late Victorian, early Edwardian, era reproduction ring in antiqued solid sterling silver. The gorgeous filigree ring is set with 4 round cut gemstones. The gemstones are each 4mm in diameter. This filigree setting is a revival of an authentic Antique ring; notice the amazing etched band... The ring sits 3/4th" (19mm) NS on the finger. The quality the ring is simply breathtaking... a ring that will last for countless years to come... The inside of the ring band is hallmarked 925 for sterling.

Gemstone color options (Man-made/Simulated Gemstones): Green Emerald, Blue Sapphire, Red Ruby, Mystic Topaz, Blue Topaz/Aqua, Purple Amethyst, Orange Citrine, Yellow Citrine, Swiss Blue Topaz, Green Peridot, Red Garnet, White CZ, Black CZ, Pink Topaz

Natural Gemstones varieties available: email for an estimate

#73 (14)



\$35

Inspired by the designs of the Art Deco/Art Nouveau period; I now offer this gorgeous sterling silver reproduction ring in sterling silver. The antiqued sterling filigree setting is set with a lovely rectangle cut gemstone. The inside of the band is stamped 925 for sterling. This rectangle cut gemstone is 11mm (about 7/16th of an inch) long by 9mm (3/8th inch) in wide. The ring sits 7mm off the finger. Notice the beautiful Antique floral design of the silver filigree setting and band.

Gemstone color options (Man-made/Simulated Gemstones): Green Emerald, Blue Sapphire, Red Ruby, Mystic Topaz, Blue Topaz/Aqua, Purple CZ, Orange Citrine, , Swiss Blue Topaz, Green Peridot, Red Garnet, White CZ, Black CZ, Pink Topaz CZ

Natural Gemstones varieties available: email for an estimate

#74 (wreath)



\$36

This is a lovely Victorian reproduction ring in sterling silver filigree with an cut oval gemstone; the gemstone is 13mm (1/2th of an inch) in length by 10mm (3/8th of an inch) in width. The inside of the band is marked 925 for sterling. The rings is 15/16th of an inch NS on the finger. Notice the beautiful craftsmanship of the silver filigree setting. This is an ornate and detailed ring

Gemstone color options (Man-made/Simulated Gemstones): Green Emerald, Blue Sapphire, Red Ruby, Mystic Topaz, Sky Blue Topaz, Purple Amethyst, Orange Citrine, Yellow Citrine, Swiss Blue Topaz, Green Peridot, Red Garnet, White CZ, Black CZ, Pink Topaz, and Peach Topaz

Natural Gemstones varieties available: email for an estimate

#75 (Hg-Dc-Mq)



(26mmx15mm)

\$37 to \$39 (CZ)

red by The Arts Décoratifs, I now offer this Art Deco reproduction ring in solid sterling silver. This gorgeous ring is set with lovely marquise cut gemstone. The gem is 26mm (1 inch) long by 15mm (9/16th inch) in width... The ring sits 7mm off the finger. The inside of the band is marked 925 for sterling. Notice the beautiful filigree swirl like craftsmanship of the floral silver setting.

Gemstone color options (Man-made/Simulated Gemstones): Green Emerald, Blue Sapphire, Red Ruby, Mystic Topaz, Blue Topaz, Purple Amethyst, Orange Citrine, Yellow Citrine, Swiss Blue Topaz, Green Peridot, Red Garnet, White CZ, Black CZ, Pink Topaz, purple CZ, white topaz

Natural Gemstones varieties available: email for an estimate



#76 (Oval-Bst)

(21mmx17mm)

\$39.99

This is a Victorian era Reproduction in solid sterling silver. The gorgeous floral filigree ring is set with a huge approximately oval cut gemstone. The lovely gemstone is 17mm (11/16th of an inch) by 21mm (just shy of 7/8th inch) in dimension... The inside of the band is marked 925 for sterling. Notice the beautiful filigree floral design of the sturdy silver setting. This lovely ring stands out on the finger even from a distance.

Gemstone color options (Man-made/Simulated Gemstones): Green Emerald, Blue Sapphire, Red Ruby, Mystic Topaz, Blue Topaz/Aqua, Purple Amethyst, Orange Citrine, Yellow Citrine, Swiss Blue Topaz, Green Peridot, Red Garnet, White CZ, Black CZ, Pink Topaz

Natural Gemstones varieties available: email for an estimate



#77 (Sq-Vic)

\$35

This is a brand new Victorian era reproduction floral filigree ring in sterling silver. The rare filigree ring is set with a lovely square shape gemstone. The gemstone is 15mm (about 9/16th of an inch) in length and 15mm in width. The ring stands about 8mm off the finger. The inside of the band is marked 925 for sterling.

Gemstone color options (Man-made/Simulated Gemstones): Green Emerald, Blue Sapphire, Red Ruby, Mystic Topaz, Blue Topaz, Purple Amethyst, Orange Citrine, Yellow Citrine, Swiss Blue Topaz, Green Peridot, Red Garnet, White CZ, Black CZ, Pink Topaz, and Peach Topaz

Natural Gemstones varieties available: email for an estimate



Email: oldmovies83@hotmail.com

Phone: 817-368-2003

Ebay store: <http://stores.ebay.com/SilverFiligreeJewelry?rdc=1>

