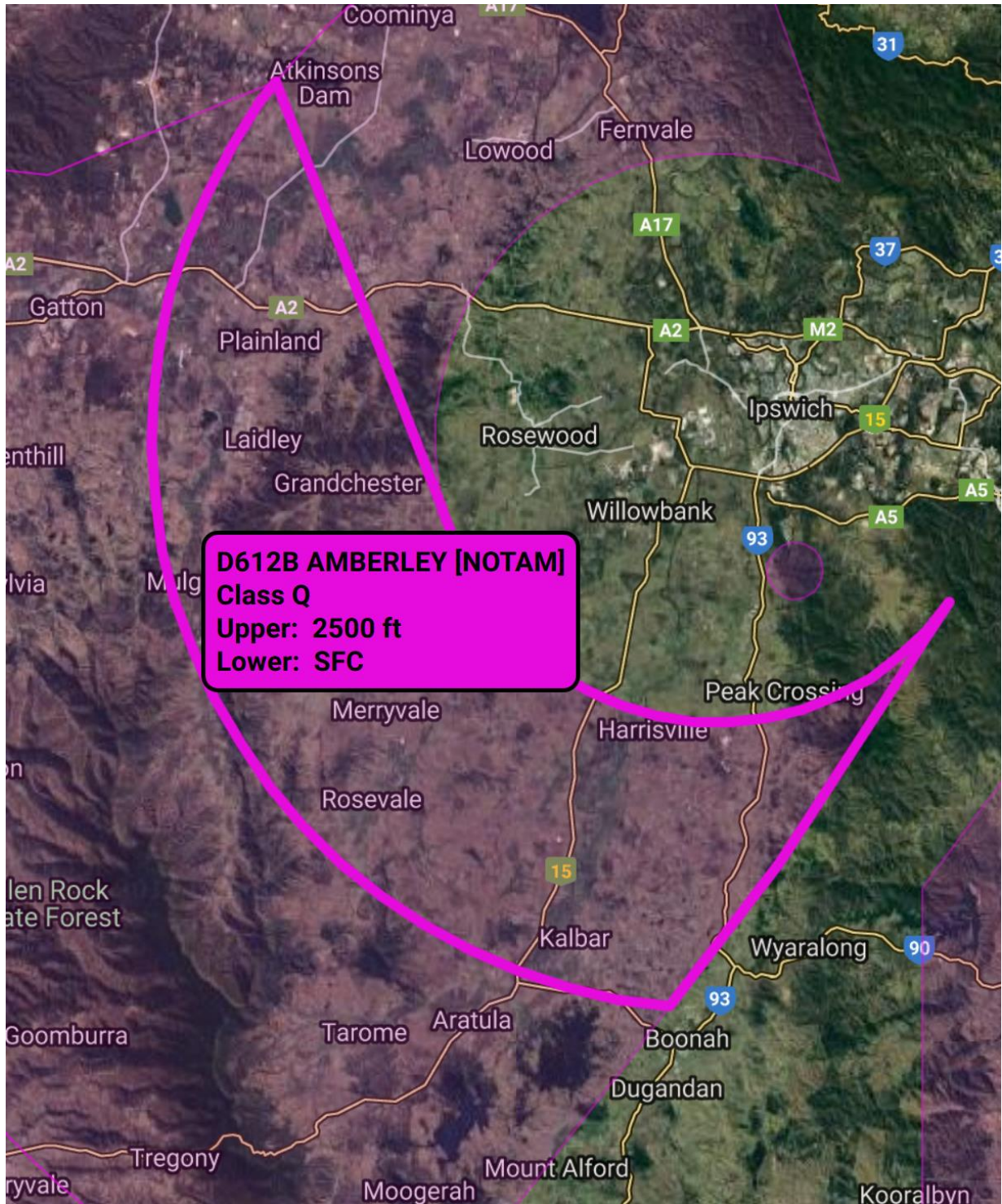
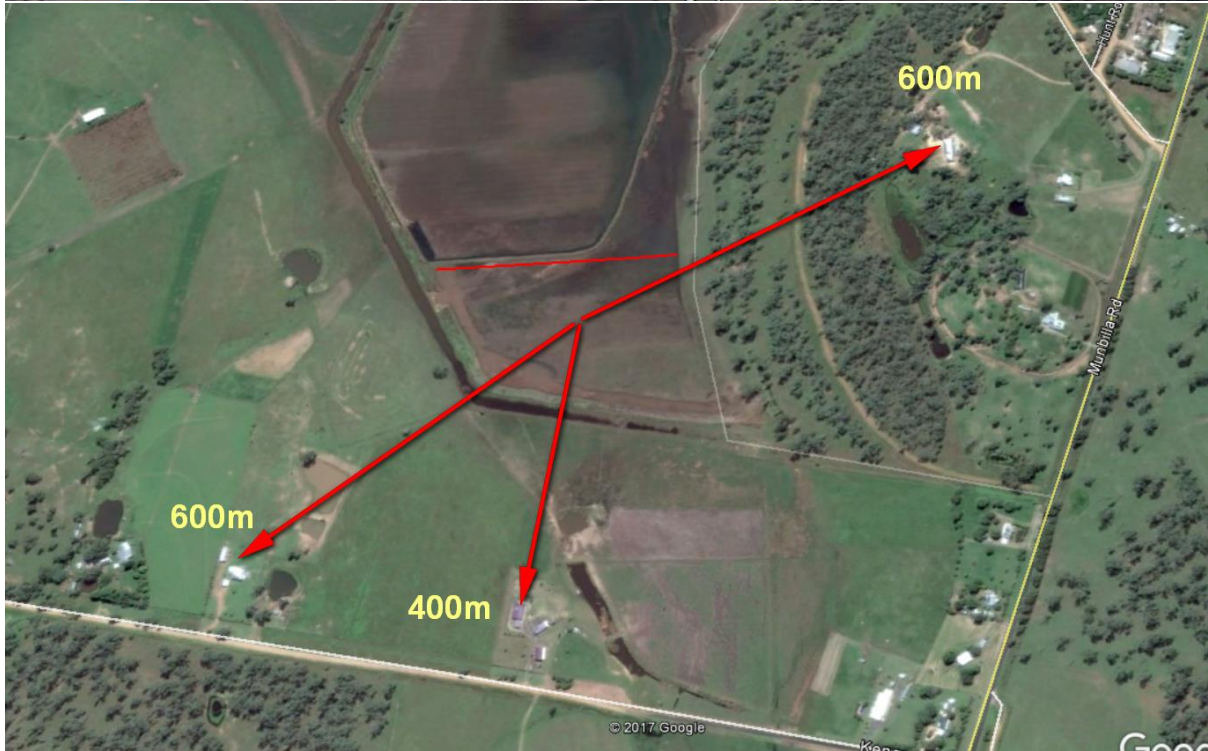
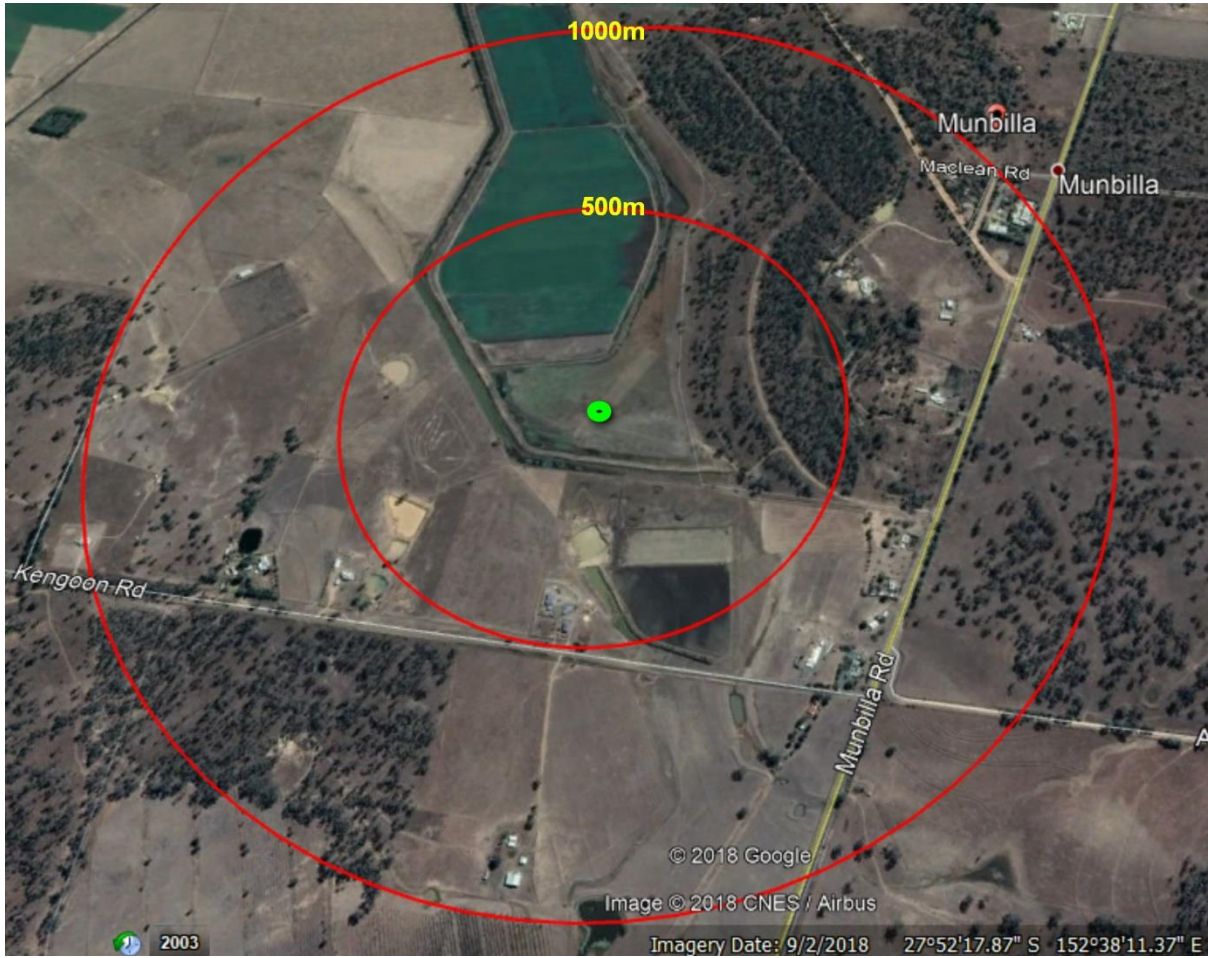


Read all pages





Read all pages



Read all pages

 **Australian Government**  
Civil Aviation Safety Authority

# FLYING WITH CONTROL?

Get to know the rules.

## IMPORTANT SAFETY INFORMATION

Congratulations on your purchase. We hope you have a lot of fun with it but there are just a few things you need to remember for everyone's safety.

-  You must only operate this aircraft in your line-of-sight in daylight. **Don't let it get too far away from you.**
-  You must not fly closer than **30 metres** to **vehicles, boats, buildings or people**
-  You must not fly over **any populous area**, such as beaches, other people's backyards, heavily populated parks, or sports ovals where there is a game in progress
-  If you are in controlled airspace, which covers most Australian cities, you must **not fly higher than 400 feet (120 metres)**
-  You should not fly within **5.5 km of an airfield.**
-  **It's illegal to fly for money** or economic reward unless you have an unmanned operator's certificate issued by the Civil Aviation Safety Authority (CASA).  
Safe and happy flying!

### Further information

Model Aeronautical Association of Australia  
[www.maaa.asn.au](http://www.maaa.asn.au)

CASA

- » Model aircraft: [casa.gov.au/sportaviation](http://casa.gov.au/sportaviation)
- » Remotely piloted aircraft: [casa.gov.au/rpa](http://casa.gov.au/rpa)
- » Phone: 131 757

1309-1818