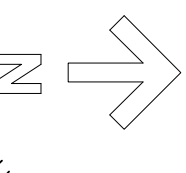
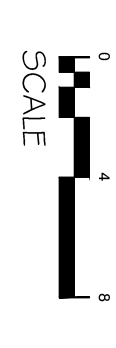


A1

SITE PLAN



- Sheet Index:
- A-010 Site Plan
 - A-100 Basement Plan
 - A-101 Main Floor Plans
 - A-102 Upstairs Plans
 - A-103 Attic Plan
 - A-202 Exterior Elevations

I hereby certify that the portion of the technical submission described herein was prepared by me or under my direct supervision and responsible charge. I am a duly registered Architect under the laws of the State of Iowa.

THOMAS A. MCINERNEY

Signature _____ Date _____

Registration expires: June 30, 2013 Date Issued: JANUARY 2001

Pages in sheets covered by this seal _____

Thomas McInerney
ARCHITECT

1288 Mayo Street
Iowa City, Iowa 52240-3331
www.thomasarchitect.com
319-331-0365
thomas@thomasarchitect.com

ITEMS SHOWN ARE DIAGRAMMATIC AND ARE SHOWN FOR THE LIMITED PURPOSE OF INDICATING PROPOSED LOCATIONS OF THE DESIGN. CONTRACTORS SHALL PROVIDE WORK IN ACCORDANCE WITH ALL APPLICABLE CODES AND REGULATIONS REQUIRED BY THE AUTHORITY HAVING JURISDICTION. THE INSTALLATION OF NEW SYSTEMS WITH EXISTING SYSTEMS.

Thomas McInerney Architect reserves the right to determine a fair and equitable solution to any problems, mistakes, oversights or hidden damage. Please do not hesitate to phone our office at 319-331-0365, especially immediately upon discovery a conflict with the Scope of Work.

Please do not instinctively produce a solution or proceed with work that would result in a change order requiring reimbursement by the owner. Any solutions outside this policy shall be with prior approval and will be at the franchisee's or contractor's expense.

Project:
Remodel of a Residence

513 Summit
Iowa City, Iowa 52240

Project number: 12.21

Note: © COPYRIGHT 2012
UNAUTHORIZED COPYING,
DISCLOSURE OR CONSTRUCTION
WITHOUT WRITTEN PERMISSION
BY THOMAS MCINERNEY ARCHITECT,
IS PROHIBITED.

Issue date:

Date	Description
10.01.2013	MEETING AND REVIEW
01.05.2013	PROGRESS

Sheet Title:
SITTE
PLAN

Sheet Number:

A-010

Thomas McInerney
ARCHITECT
 1000 Main Street
 Iowa City, Iowa 52240-3331
 www.thomasarchitect.com
 319-331-0365
 thoms@thomasarchitect.com

ITEMS SHOWN ARE DIAGRAMMATIC AND ARE SHOWN FOR THE LIMITED PURPOSE OF INDICATING PROPOSED LOCATIONS OF THE DESIGN. CONTRACTORS SHALL PROVIDE WORK IN ACCORDANCE WITH ALL APPLICABLE CODES AND REGULATIONS REQUIRED BY THE AUTHORITY HAVING JURISDICTION. CONTRACTOR SHALL COORDINATE THE INSTALLATION OF NEW SYSTEMS WITH EXISTING SYSTEMS.

Thomas McInerney Architect reserves the right to determine a fair and equitable solution to any problems, mistakes, omissions or hidden damage. Please do not hesitate to phone our office at 319-331-0365, especially immediately upon discovery a conflict with the scope of work. Please do not instinctively produce a solution or proceed with work that would result in a change order requiring reimbursement by the owner. Any solutions outside this policy shall be with prior approval and will be at the franchisee's or contractor's expense.

Project:
 Remodel of a
 Residence

513 Summit
 Iowa City, Iowa 52240

Project number: 12.21

Note: © COPYRIGHT 2012
 UNAUTHORIZED COPYING,
 DISCLOSURE OR CONSTRUCTION
 WITHOUT WRITTEN PERMISSION
 BY THOMAS MCINERNEY, ARCHITECT,
 IS PROHIBITED.

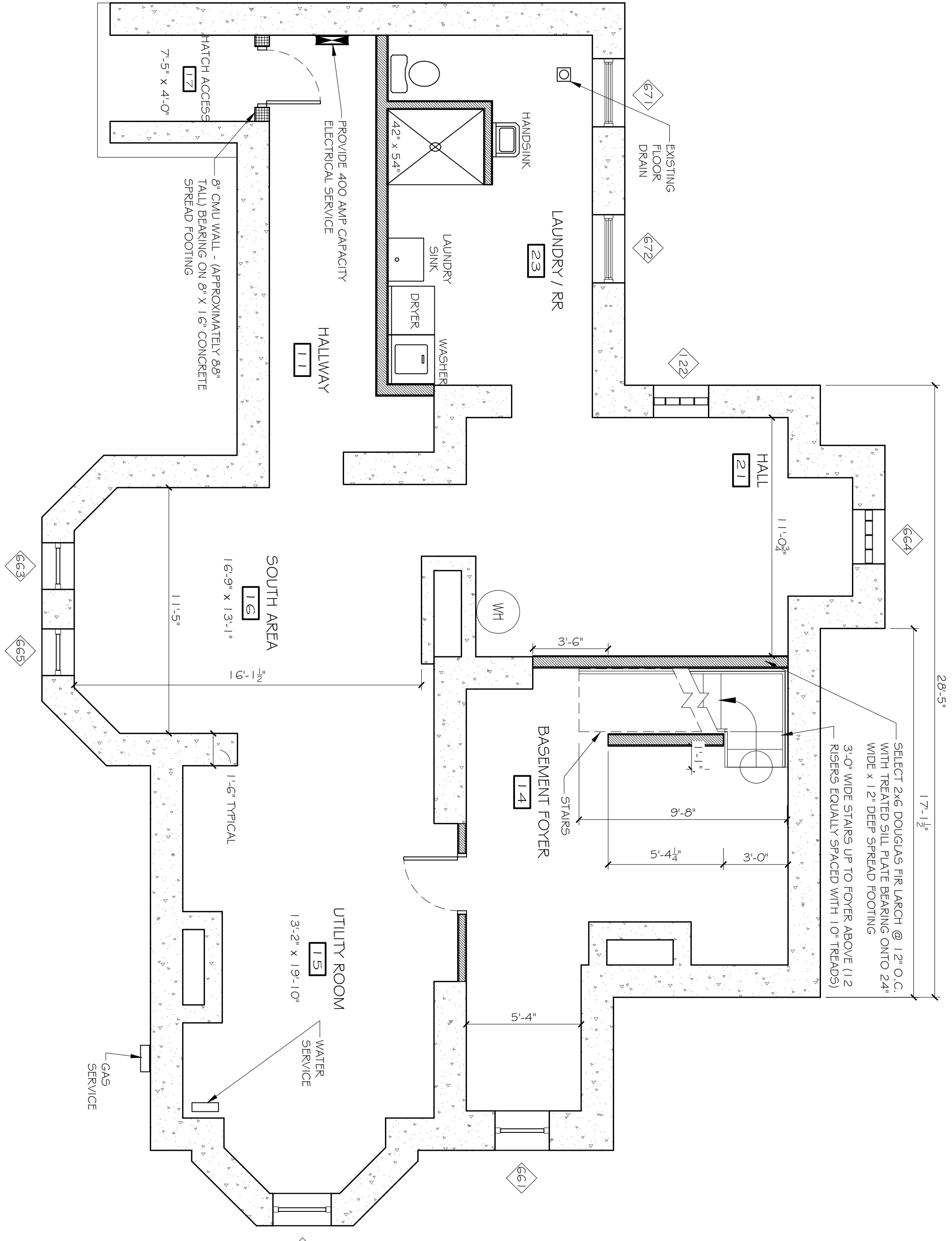
Issue date:

Date	Description
23.01.2013	PROGRESS
01.05.2013	PROGRESS

Sheet Title:
BASMENT PLAN
Sheet Number:

A-100

Architect:



DOOR SCHEDULE

Number	ROOM	Style	SIZE-PR	WHH	NOTES
519	*SPACE NOT FOUND*	Variable Size Glass Block Window		2	
674	*SPACE NOT FOUND*	Standard		2	
675	*SPACE NOT FOUND*	Standard		2	
676	SOUTH AREA	Standard		2	
677	*SPACE NOT FOUND*	Variable Size Glass Block Window		2	
680	SOUTH AREA	Standard	2'-6" x 6'-8"	2	
683	UTILITY ROOM	Hinged = Single	2'-6" x 6'-8"		
689	HALLWAY	Hinged = Single	2'-6" x 6'-8"		

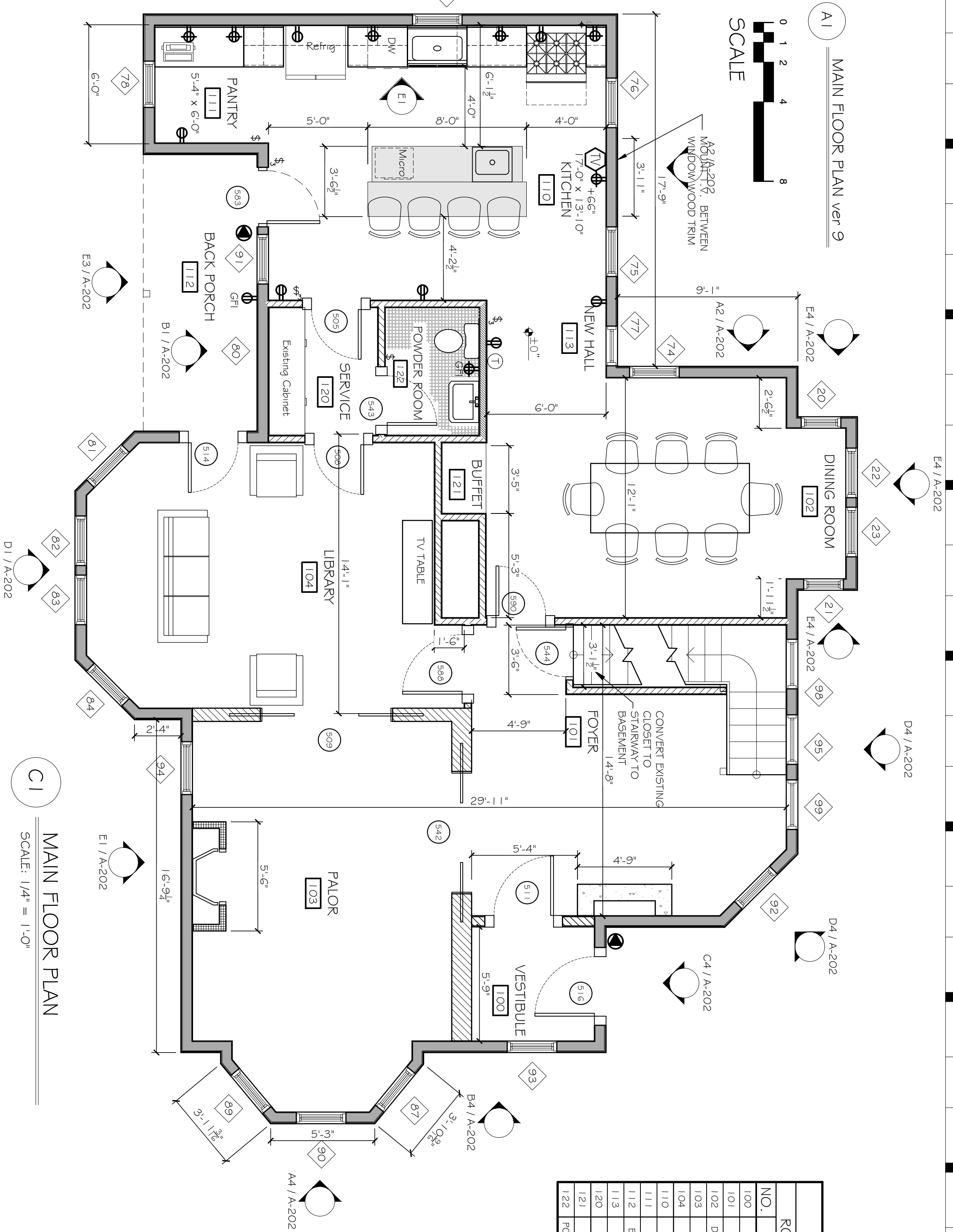
ROOM FINISH SCHEDULE

NO.	ROOM NAME	NET SQUARE FOOTAGE	CEILING			WALL FINISH				FLOOR FINISH	WALL BASE	NOTES
			Height	Ceiling Fin	East Fin	South Fin	West Fin	North Fin				
11	HALLWAY	144 SF	6'-0"									
14	BASMENT FOYER	169 SF	6'-0"									
15	UTILITY ROOM	214 SF	6'-0"									
16	SOUTH AREA	192 SF	6'-0"									
17	HATCH ACCESS	30 SF	6'-0"									
21	HALL	187 SF	6'-0"									
23	LAUNDRY / RR	123 SF	6'-0"									
262	STAIRS	49 SF	6'-0"									

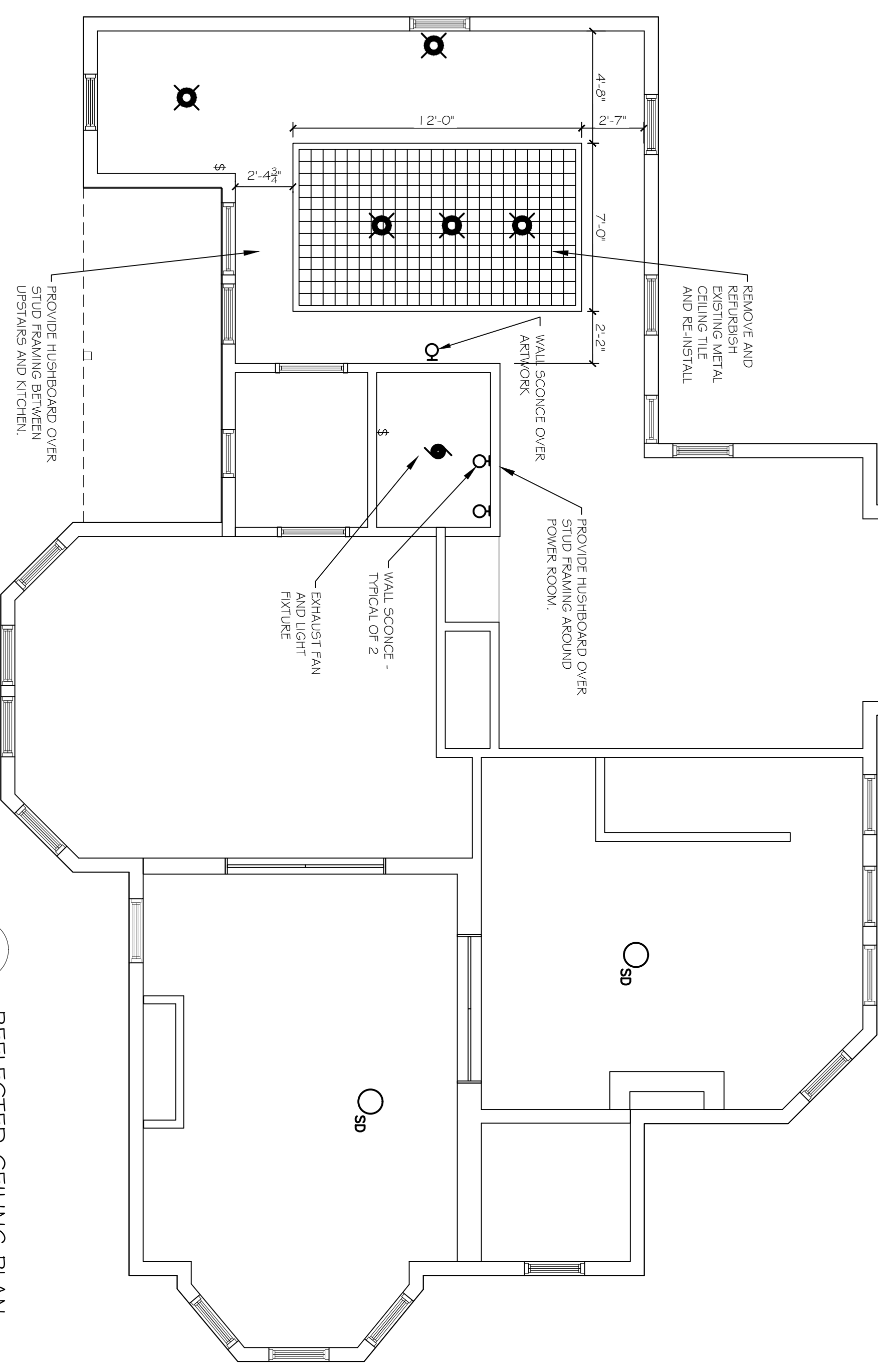
B1
BASMENT FLOOR PLAN

SCALE: 1/4" = 1'-0"
 N

A1 MAIN FLOOR PLAN ver 9
SCALE
0 1 2 4 8



A1 MAIN FLOOR PLAN ver 9



A1 REFLECTED CEILING PLAN
SCALE: 1/4" = 1'-0"

ROOM NO.	NAME	NET SQUARE FOOTAGE	CEILING			WALL FINISH			FLOOR		NOTES								
			Height	Material	Finish	East Fin	South Fin	West Fin	North Fin	FLOOR FINISH		WALL BASE							
100	VESTIBULE	44 SF	10'-0"	Ceiling Fin	---	East Fin	---	South Fin	---	West Fin	---	North Fin	---	FLOOR FINISH	---	WALL BASE	---	NOTES	---
101	FOYER	188 SF	10'-0"	---	---	---	---	---	---	---	---	---	---	---	---	---	---	---	---
102	DINING ROOM	208 SF	10'-0"	---	---	---	---	---	---	---	---	---	---	---	---	---	---	---	---
103	PALOR	233 SF	10'-0"	---	---	---	---	---	---	---	---	---	---	---	---	---	---	---	---
104	LIBRARY	234 SF	10'-0"	---	---	---	---	---	---	---	---	---	---	---	---	---	---	---	---
110	KITCHEN	235 SF	10'-0"	RESTORED STEEL PANELS	---	---	---	---	---	---	---	---	---	---	---	---	---	---	---
111	PAINTER	32 SF	10'-0"	---	---	---	---	---	---	---	---	---	---	---	---	---	---	---	---
112	BACK PORCH	73 SF	8'-6"	---	---	---	---	---	---	---	---	---	---	---	---	---	---	---	---
113	NEW HALL	23 SF	9'-0"	GRYSUM BOARD	---	---	---	---	---	---	---	---	---	---	---	---	---	---	---
120	SERVICE	35 SF	10'-0"	---	---	---	---	---	---	---	---	---	---	---	---	---	---	---	---
121	BUFFET	9 SF	6'-8"	---	---	---	---	---	---	---	---	---	---	---	---	---	---	---	---
122	POWDER ROOM	26 SF	10'-0"	GRYSUM BOARD	---	---	---	---	---	---	---	---	---	---	---	---	---	---	---

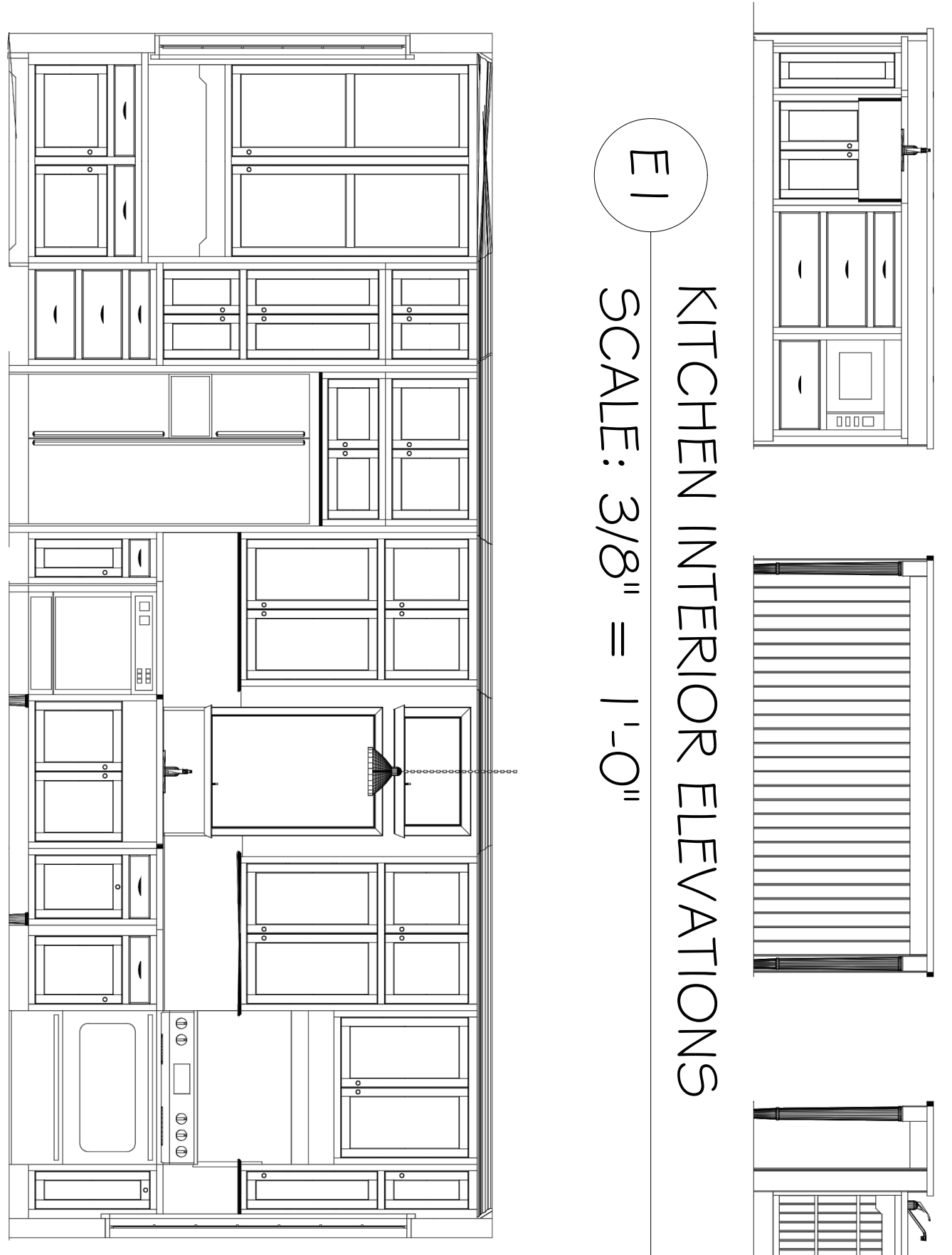
Number	ROOM	Style	SIZE - PR WxH NOTES
505	SERVICE	Hinged - Single (3)	2'-6" x 6'-8"
508	LIBRARY	Hinged - Single (3)	2'-6" x 6'-8"
509	PALOR	Hinged - Single (3)	2'-6" x 6'-8"
511	VESTIBULE	Pocket - Double	PR 3'-3" x 6'-8"
514	LIBRARY	Hinged - Single (3)	2'-6" x 6'-8"
516	VESTIBULE	Hinged - Single (3)	2'-6" x 6'-8"
542	PALOR	Hinged - Single (3)	PR 3'-0" x 6'-8"
543	POWDER ROOM	Hinged - Single (2)	2'-6" x 6'-10"
544	STAIRS	Hinged - Single (2)	PR 2'-6" x 6'-9"
548	KITCHEN	Hinged - Single (3)	2'-8" x 6'-8"
583	LIBRARY	Hinged - Single (3)	2'-6" x 6'-8"
590	DINING ROOM	Hinged - Single (3)	2'-6" x 6'-8"

NOTES:
A. RELOCATED PAINTY OPENING.
B. INSTALL REFURBISHED SALVAGED DOOR.

MARK	SIZE	WIDTH	HEIGHT	Sill Height		Header Height	TYPE	NOTES
				Header	Height			
20	2'-0"	2'-0"	7'-0"	1'-0"	1'-0"	8'-0"	Double Hung	---
21	2'-0"	2'-0"	7'-0"	1'-0"	1'-0"	8'-0"	Double Hung	---
22	2'-6"	2'-6"	7'-0"	1'-0"	1'-0"	8'-0"	Double Hung	---
23	2'-6"	2'-6"	7'-0"	1'-0"	1'-0"	8'-0"	Double Hung	---
24	2'-6"	2'-6"	7'-0"	1'-0"	1'-0"	8'-0"	Double Hung	---
25	2'-6"	2'-6"	6'-4"	1'-8"	1'-8"	8'-0"	Double Hung	---
76	2'-6"	2'-6"	6'-4"	1'-8"	1'-8"	8'-0"	Double Hung	---
77	2'-0"	2'-0"	6'-6"	5'-6"	5'-6"	8'-0"	Picture	---
78	2'-4"	5'-0"	3'-4"	---	---	8'-0"	Double Hung	---
79	2'-6"	4'-5"	7'-9"	---	---	9'-8"	Picture	---
80	2'-0"	2'-4"	7'-4"	---	---	8'-0"	Double Hung	---
81	2'-6"	7'-0"	1'-0"	---	---	8'-0"	Double Hung	---
82	2'-6"	7'-0"	1'-0"	---	---	8'-0"	Double Hung	---
83	2'-6"	7'-0"	1'-0"	---	---	8'-0"	Double Hung	---
84	2'-6"	7'-0"	1'-0"	---	---	8'-0"	Double Hung	---
87	2'-6"	7'-0"	1'-0"	---	---	8'-0"	Double Hung	---
90	2'-6"	7'-0"	1'-0"	---	---	8'-0"	Double Hung	---
91	2'-6"	6'-4"	1'-8"	---	---	8'-0"	Double Hung	---
92	2'-6"	7'-0"	1'-0"	---	---	8'-0"	Double Hung	---
93	2'-6"	7'-0"	1'-0"	---	---	8'-0"	Double Hung	---
94	2'-6"	7'-0"	6'	---	---	8'-0"	Double Hung	---
95	2'-6"	7'-0"	1'-0"	---	---	8'-0"	Picture	---
98	2'-6"	7'-0"	1'-0"	---	---	8'-0"	Picture	---
99	2'-6"	7'-0"	1'-0"	---	---	8'-0"	Picture	---

NOTES:
1. BLUAGE WINDOW TO MATCH HEIGHT OF EXISTING KITCHEN WINDOWS.

E1 KITCHEN INTERIOR ELEVATIONS
SCALE: 3/8" = 1'-0"



Thomas McInerney ARCHITECT
1208 Mary Street
Iowa City, Iowa 52243-3331
www.thomasmcinerney.com
319-331-0365
thomas@thomasmcinerney.com

Architect:
Thomas McInerney Architect reserves the right to determine a fair and equitable solution to any problems, mistakes, oversights or hidden damage. Please do not hesitate to phone our office at 319-331-0365, especially immediately upon discovery a conflict with the scope of work.
Please do not insistively produce a solution or proceed with work that would result in a change order requiring reimbursement by the owner. Any solutions outside this policy shall be with prior approval and will be at the franchisee's or contractor's expense.

Project:
Remodel of a Residence

513 Summit
Iowa City, Iowa 52240

Project number: 12.21
Note: © COPYRIGHT 2012
UNAUTHORIZED COPYING, DISCLOSURE OR CONSTRUCTION WITHOUT WRITTEN PERMISSION BY THOMAS MCINERNEY ARCHITECT, IS PROHIBITED.

Date	Description
10.01.2013	MEETING AND REVIEW
23.01.2013	PROGRESS
18.02.2013	PROGRESS
06.03.2013	PROGRESS
18.03.2013	PROGRESS
01.05.2013	PROGRESS

Sheet Title:
MAIN FLOOR PLANS
Sheet Number:

A-101

Architect:
Thomas McInerney ARCHITECT
 1280 Mason Street
 Iowa City, Iowa 52242-3331
 www.thomasmcinerney.com
 319-331-0365
 thomas@thomasmcinerney.com

ITEMS SHOWN ARE DIAGRAMMATIC AND ARE SHOWN FOR THE LIMITED PURPOSE OF INDICATING PROPOSED LOCATIONS OF THE DESIGN. CONTRACTORS SHALL PROVIDE WORK IN ACCORDANCE WITH ALL APPLICABLE CODES AND REGULATIONS REQUIRED BY THE AUTHORITY HAVING JURISDICTION. CONTRACTOR SHALL COORDINATE THE INSTALLATION OF NEW SYSTEMS WITH EXISTING SYSTEMS.

Thomas McInerney Architect reserves the right to determine a fair and equitable solution to any problems, mistakes, omissions or hidden damage. Please do not hesitate to phone our office at 319-331-0365, especially immediately upon discovery a conflict with the scope of work.

Space do not instinctively produce a solution or proceed with work that would result in a change order requiring reimbursement by the owner.

Any solutions outside this policy shall be with prior approval and will be at the franchisee's or contractor's expense.

Project:
 Remodel of a Residence
 513 Summit
 Iowa City, Iowa 52240

Project number: 12.21

Note: © COPYRIGHT 2012 UNAUTHORIZED COPYING, DISCLOSURE OR CONSTRUCTION WITHOUT WRITTEN PERMISSION BY THOMAS MCINERNEY, ARCHITECT, IS PROHIBITED.

Issue date:

Date	Description
10.01.2013	MEETING AND REVIEW
23.01.2013	PROGRESS
20.02.2013	PROGRESS
01.05.2013	PROGRESS

Sheet Title:
 UPSTAIRS FLOOR PLANS

Sheet Number:
 A-102

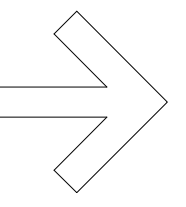
ROOM NO	NAME	NET SQUARE FOOTAGE	CEILING		WALL FINISH			FLOOR		NOTES
			Height	Finish	East Fin	South Fin	West Fin	North Fin	FLOOR FINISH	
200	EAST BEDROOM	222 SF	9'-0"
201	HALLWAY	40 SF	9'-0"
202	CLOSET	21 SF	9'-0"	PNT GRP	PNT GRP	PNT GRP	PNT GRP	...	OAK T&G	BUTTERNUT Provide floor framing
203	NORTH ROOM	157 SF	9'-0"
205	STAIRS	53 SF	9'-0"
206	GUEST	198 SF	9'-0"
210	MASTER BEDROOM	269 SF	9'-0"	OAK T&G	BUTTERNUT
230	ATTIC	35 SF	9'-0"	PNT GRP	PNT GRP	PNT GRP	PNT GRP	Add handrail
231	BATHROOM	23 SF	9'-0"	PNT GRP	PNT GRP	PNT GRP	PNT GRP
232	HALL	47 SF	9'-0"	PNT GRP	PNT GRP	PNT GRP	PNT GRP
233	CLOSET	10 SF	9'-0"	OAK T&G	BUTTERNUT
234	CLOSET	9 SF	9'-0"
257	LAUNDRY	37 SF	9'-0"	PNT GRP	PNT GRP	PNT GRP	PNT GRP	...	TILE	TILE
258	BATHROOM	153 SF	9'-0"	PNT GRP	PNT GRP	PNT GRP	PNT GRP	...	TILE	TILE 4" High wall tile

MARK	SIZE	WINDOW SCHEDULE			NOTES
		Sill Height	Header Height	TYPE	
200	2'-0" x 6'-4"	1'-0"	8'-0"	Double Hung	REPAIR RECD
203	2'-6" x 4'-4"	1'-0"	8'-0"	Double Hung	...
204	2'-6" x 4'-4"	1'-0"	8'-0"	Double Hung	REPAIR RECD
205	2'-6" x 4'-4"	1'-0"	8'-0"	Double Hung	...
206	2'-6" x 4'-4"	1'-0"	8'-0"	Double Hung	...
207	2'-6" x 4'-4"	1'-0"	8'-0"	Double Hung	...
208	2'-6" x 4'-4"	1'-0"	8'-0"	Double Hung	...
209	2'-6" x 4'-4"	1'-0"	8'-0"	Double Hung	...
210	2'-6" x 4'-4"	1'-0"	8'-0"	Double Hung	...
211	2'-6" x 4'-4"	1'-0"	8'-0"	Double Hung	...
213	2'-6" x 4'-4"	1'-0"	8'-0"	Double Hung	...
214	2'-6" x 4'-4"	1'-0"	8'-0"	Double Hung	...
215	2'-6" x 4'-4"	1'-0"	8'-0"	Double Hung	...
216	2'-6" x 4'-4"	1'-0"	8'-0"	Double Hung	...
217	2'-6" x 4'-4"	1'-0"	8'-0"	Double Hung	...
218	2'-6" x 4'-4"	1'-0"	8'-0"	Double Hung	...
222	2'-6" x 4'-4"	1'-0"	8'-0"	Double Hung	Repair Reaid
226	2'-6" x 4'-4"	1'-0"	8'-0"	Double Hung	...
227	2'-6" x 4'-4"	1'-0"	8'-0"	Double Hung	...
236	2'-6" x 4'-6"	3'-4"	8'-0"	Double Hung	...

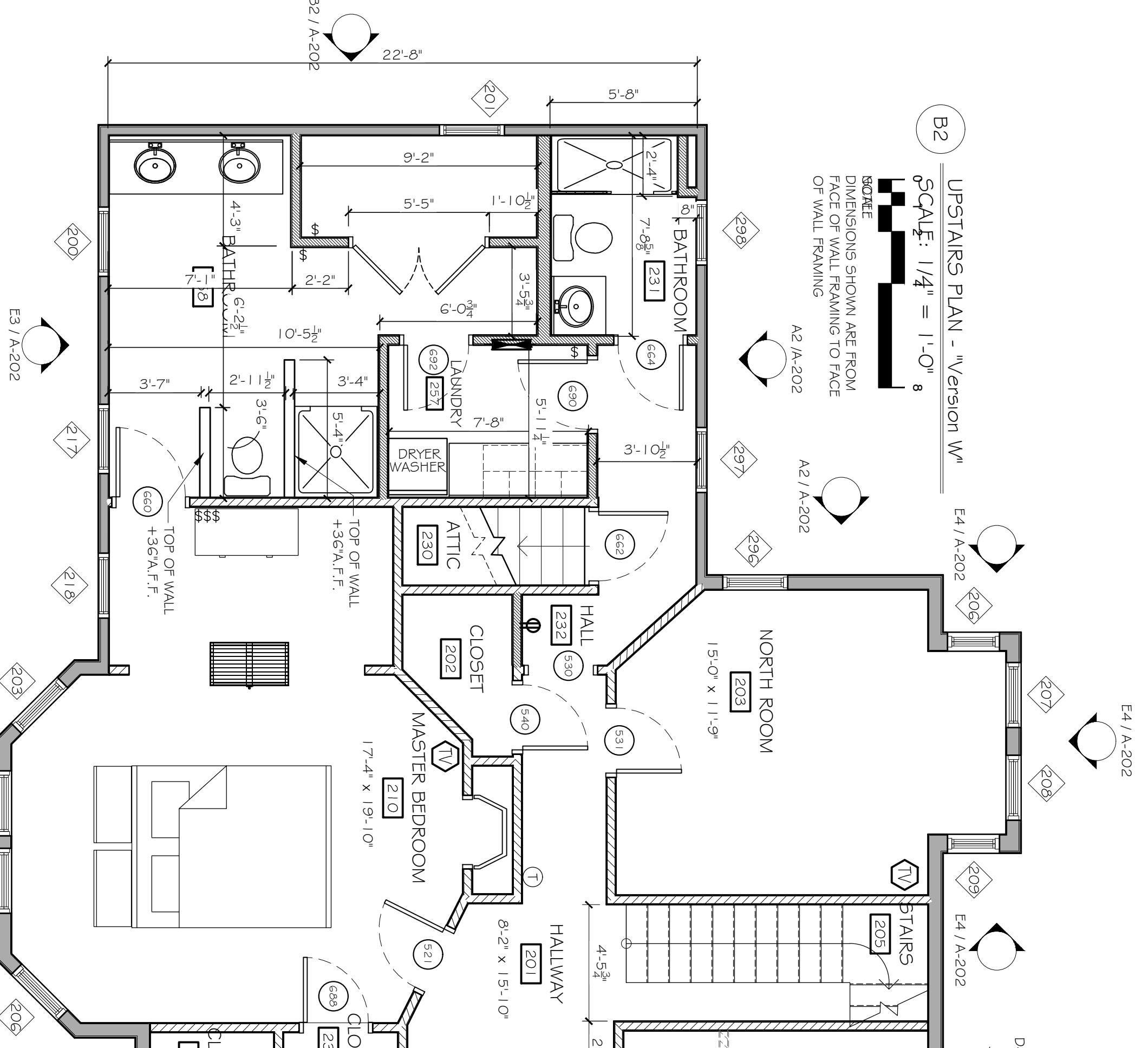
Number	ROOM	Style	DOOR SCHEDULE		NOTES
			SIZE-PR	W&H	
521	MASTER BEDROOM	Hinged - Single	2'-6"	6'-8"	A
524	EAST BEDROOM	Hinged - Single	2'-6"	6'-8"	A
530	HALL	Cased Opening	2'-6"	6'-8"	A
531	NORTH ROOM	Hinged - Single	2'-6"	6'-8"	A
535	EAST BEDROOM	Hinged - Single	2'-6"	6'-8"	A
537	GUEST	Hinged - Single	2'-6"	6'-8"	A
538	GUEST	Hinged - Single	2'-6"	6'-8"	A
540	HALLWAY	Hinged - Single	2'-6"	6'-8"	A
660	BATHROOM	Hinged - Single	2'-8"	6'-8"	A, C
662	HALL	Hinged - Single (4)	2'-8"	6'-8"	A, C
684	HALL	Hinged - Single (4)	2'-6"	6'-8"	B
688	MASTER BEDROOM	Hinged - Single	2'-6"	6'-8"	A
690	LAUNDRY	Hinged - Single (4)	2'-6"	6'-8"	A
692	...	Hinged - Single (4)	2'-6"	6'-8"	A
692	*SPACE NOT FOUND*	Hinged - Single (4)	2'-6"	6'-8"	-
696	BATHROOM	Cased Opening	2'-4"	6'-8"	-

NOTES:
 A. EXISTING
 B. INSTALL REFRUBISHED SALVAGED DOOR
 C. MODIFY SWING DIRECTION OF DOOR

UPPER FLOOR PLAN
 SCALE: 1/4" = 1'-0"

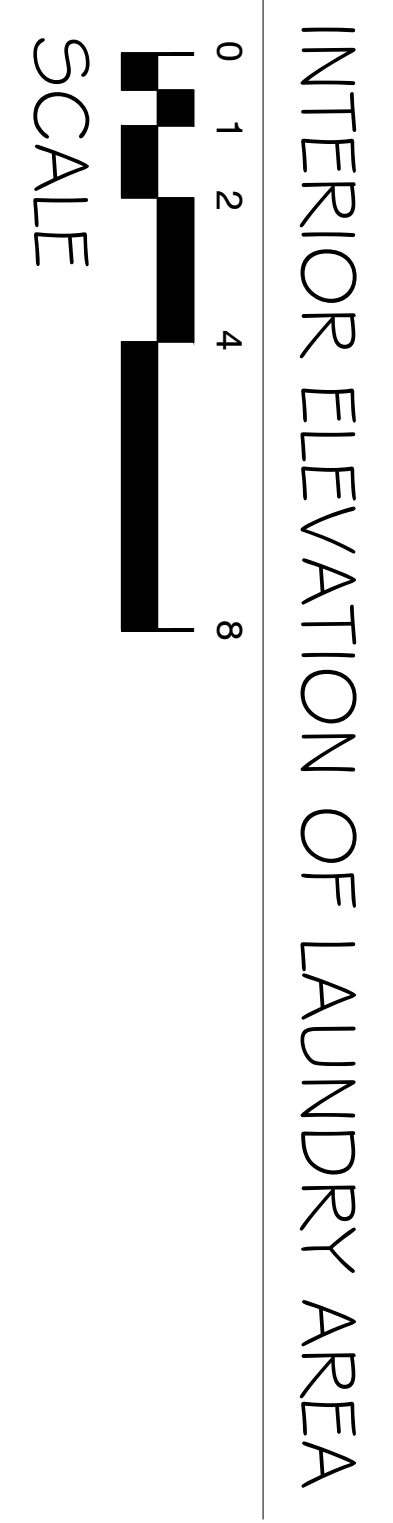
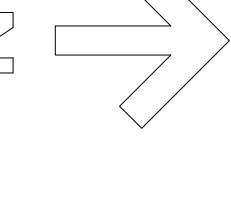
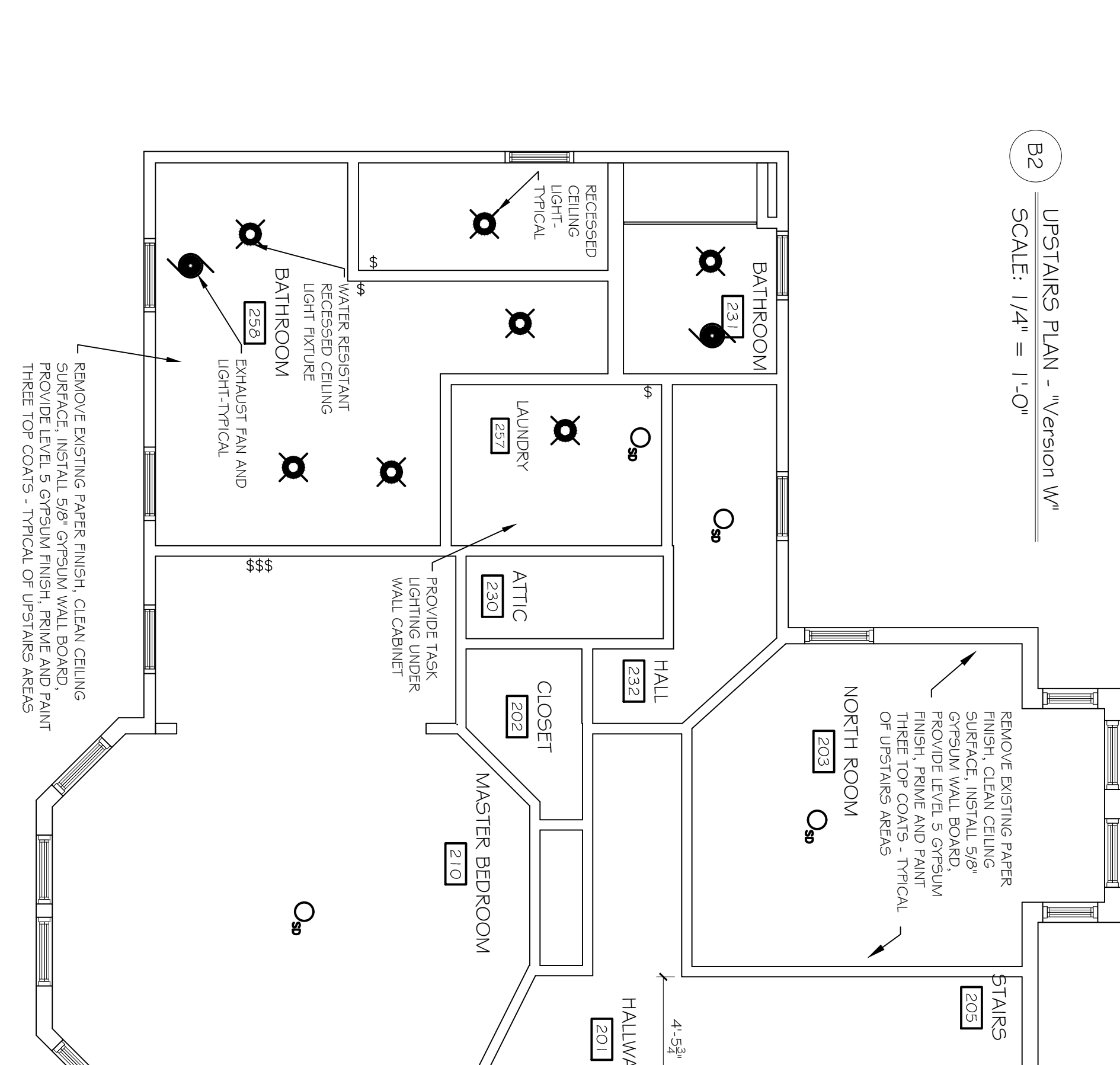


UPSTAIRS PLAN - "Version W"
 SCALE: 1/4" = 1'-0"



REFLECTED CEILING PLAN
 SCALE: 1/4" = 1'-0"

UPSTAIRS PLAN - "Version W"
 SCALE: 1/4" = 1'-0"



INTERIOR ELEVATION OF LAUNDRY AREA
 SCALE: 1/4" = 1'-0"

H1

Architect:

Thomas McInerney
ARCHITECT
 106 Mason Street
 Iowa City, Iowa 52240-3331
 www.thomasarchitect.com
 319-331-0365
 thomas@thomasarchitect.com

ITEMS SHOWN ARE DIAGRAMMATIC AND ARE SHOWN FOR THE LIMITED PURPOSE OF INDICATING PROPOSED LOCATIONS OF THE DESIGN. CONTRACTORS SHALL PROVIDE WORK IN ACCORDANCE WITH ALL APPLICABLE CODES AND REGULATIONS REQUIRED BY THE AUTHORITY HAVING JURISDICTION. CONTRACTOR SHALL COORDINATE THE INSTALLATION OF NEW SYSTEMS WITH EXISTING SYSTEMS.

Thomas Mc Inerney Architect reserves the right to determine a fair and equitable solution to any problems, mistakes, oversights or hidden damage. Please do not hesitate to phone our office at 319-331-0365, especially immediately upon discovery a conflict with the scope of work. Please do not instinctively produce a solution or proceed with work that would result in a change order requiring reimbursement by the owner. Any solutions outside this policy shall be with prior approval and will be at the franchisee's or contractor's expense.

Project :
 Remodel of a
 Residence

513 Summit
 Iowa City, Iowa 52240

Project number: 12.21

Note: © COPYRIGHT 2012
 UNAUTHORIZED COPYING,
 DISCLOSURE OR CONSTRUCTION
 WITHOUT WRITTEN PERMISSION
 BY THOMAS MCINERNEY, ARCHITECT,
 IS PROHIBITED.

Issue date:

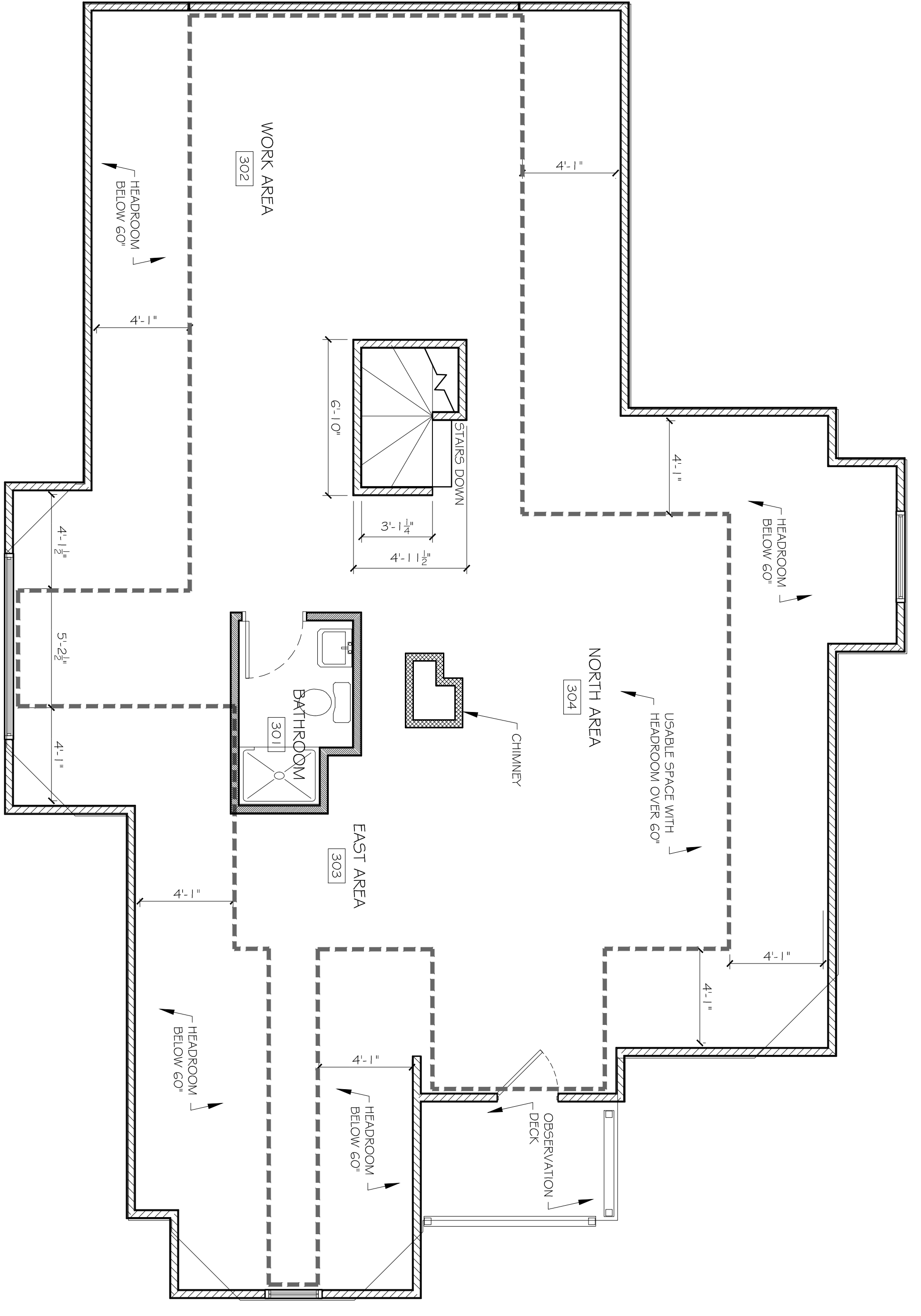
Date	Description
10.01.2013	MEETING AND REVIEW
01.05.2013	PROGRESS

Sheet Title:

**ATTIC
 FLOOR
 PLAN**

Sheet Number:

A-103



USABLE AREA SCHEDULE	
Room Number	Room name
301	BATHROOM
302	WORK AREA
303	EAST AREA
304	NORTH AREA
305	STAIRS
306	SOUTH WING
	Net Area
	47 SF
	292 SF
	99 SF
	343 SF
	29 SF
	48 SF
	857 SF

B2
 ATTIC FLOOR PLAN - "delta"
 SCALE 0 1 2 4 8
 N

Architect:

Thomas McInerney
ARCHITECT
1208 Mary Street
Iowa City, Iowa 52240-3331
www.thomasmcarchitect.com
319-331-0365
thomas@thomasmcarchitect.com

ITEMS SHOWN ARE DIAGRAMMATIC AND ARE SHOWN FOR THE LIMITED PURPOSE OF INDICATING PROPOSED LOCATIONS OF THE DESIGN. CONTRACTORS SHALL PROVIDE WORK IN ACCORDANCE WITH ALL APPLICABLE CODES AND REGULATIONS REQUIRED BY THE AUTHORITY HAVING JURISDICTION. CONTRACTOR SHALL OBTAIN ALL NECESSARY PERMITS AND INSTALLATION OF NEW SYSTEMS WITH EXISTING SYSTEMS.

Thomas Mc Inerney Architect reserves the right to determine a fair and equitable solution to any problems, mistakes, overights or hidden damage. Please do not hesitate to phone our office at 319-331-0365, especially immediately upon discovery a conflict with the scope of Work.
Please do not insistively produce a solution or proceed with work that would result in a change order requiring reimbursement by the owner.
Any solutions outside this policy shall be with prior approval and will be at the franchisee's or contractor's expense.

Project:
Remodel of a
Residence

513 Summit
Iowa City, Iowa 52240

Project number: 12.21

Note: © COPYRIGHT 2012
UNAUTHORIZED COPYING,
DISCLOSURE OR CONSTRUCTION
WITHOUT WRITTEN PERMISSION
BY THOMAS MCINERNEY ARCHITECT,
IS PROHIBITED.

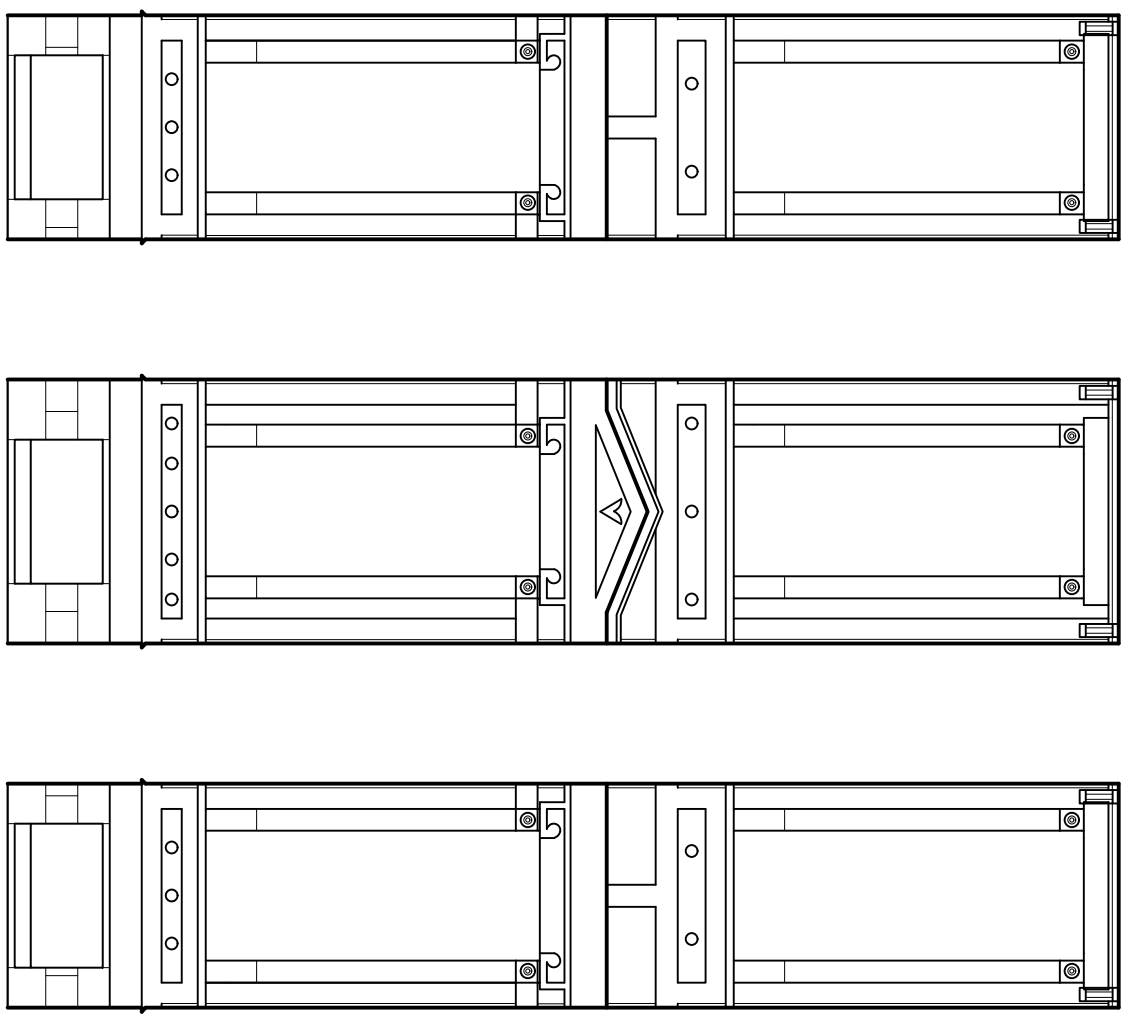
Issue date:
Date Description
24.04.2013 OWNER REVIEW
01.05.2013 PROGRESS

Sheet Title:

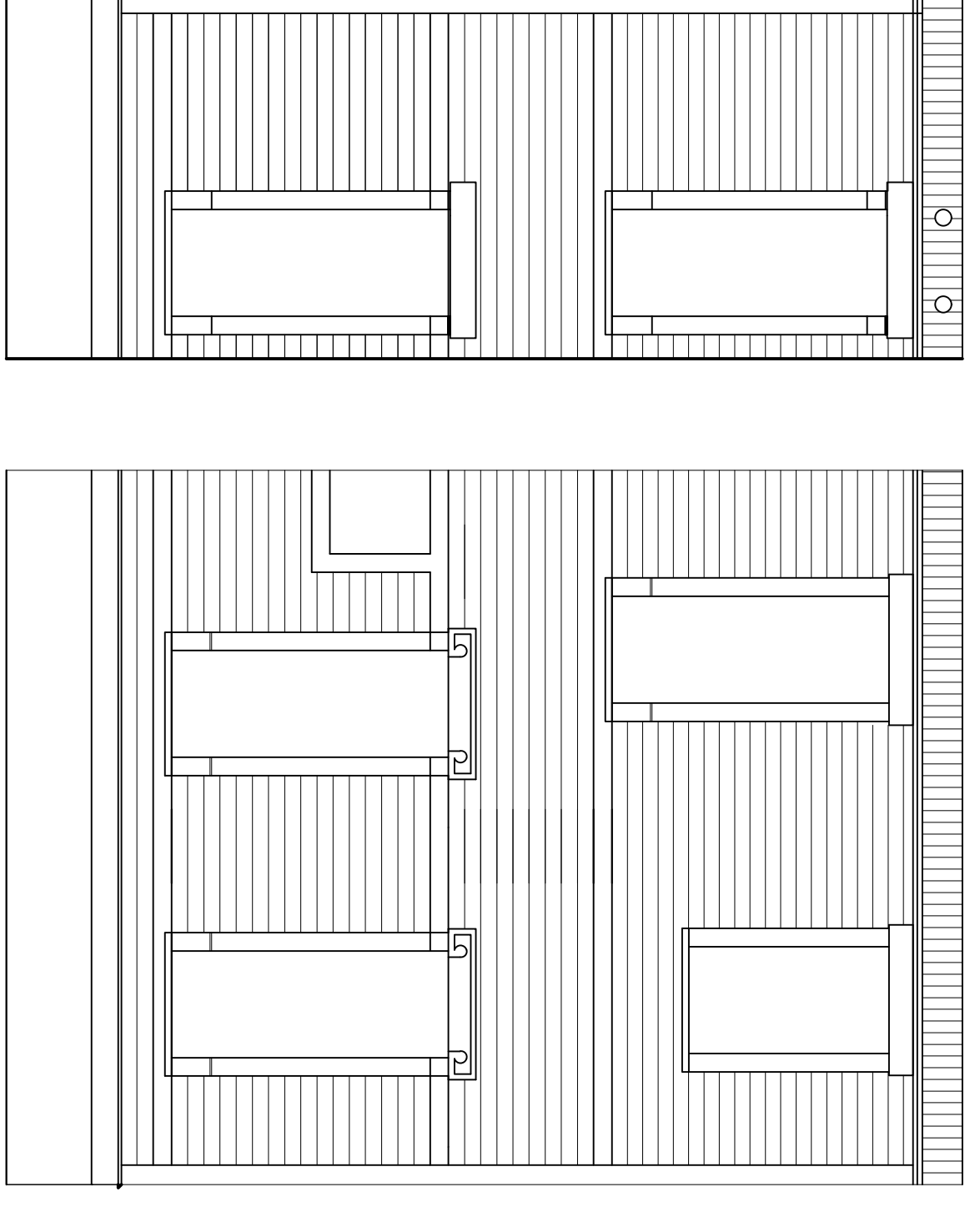
**EXTERIOR
ELEVATIONS**

Sheet Number:

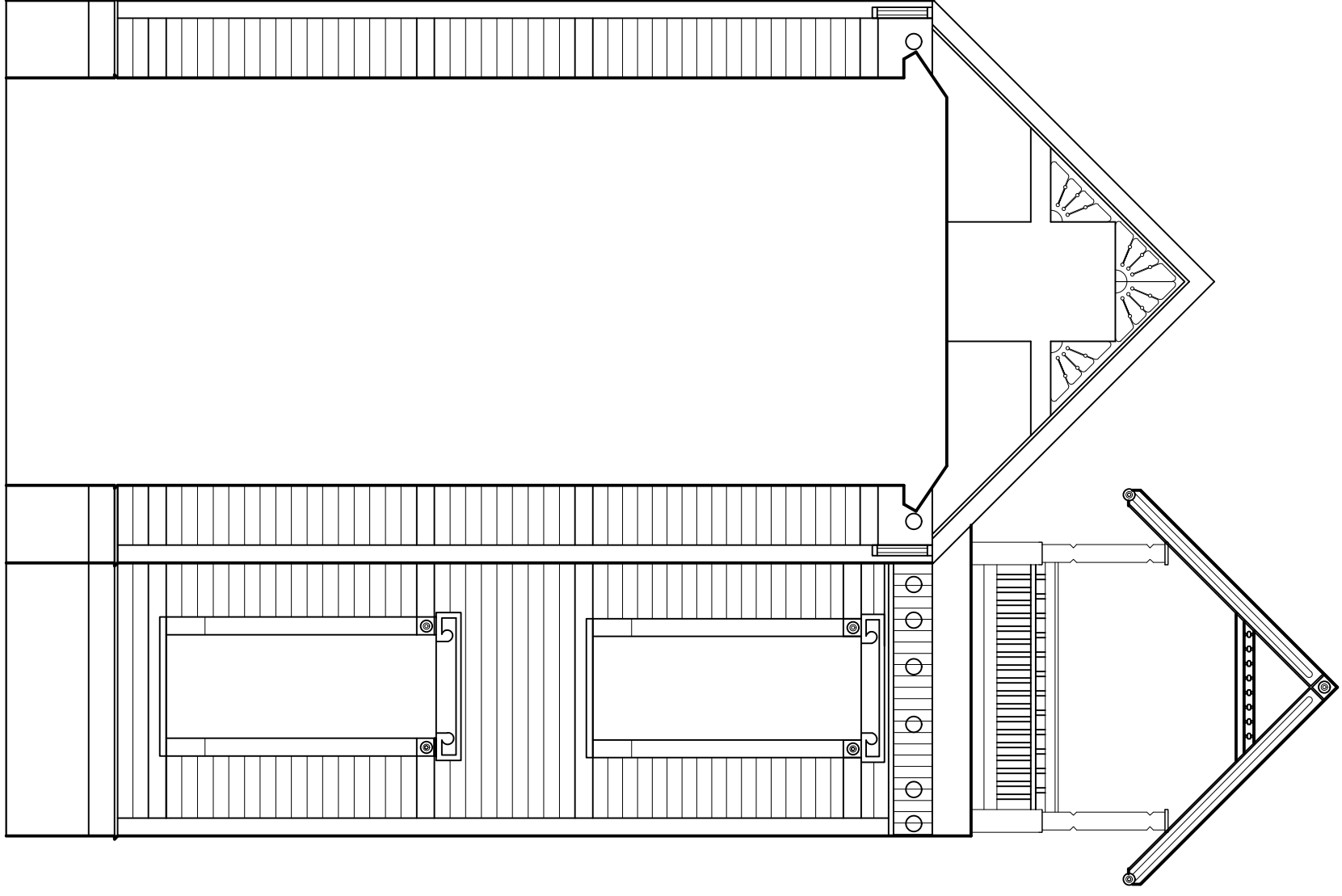
A-202



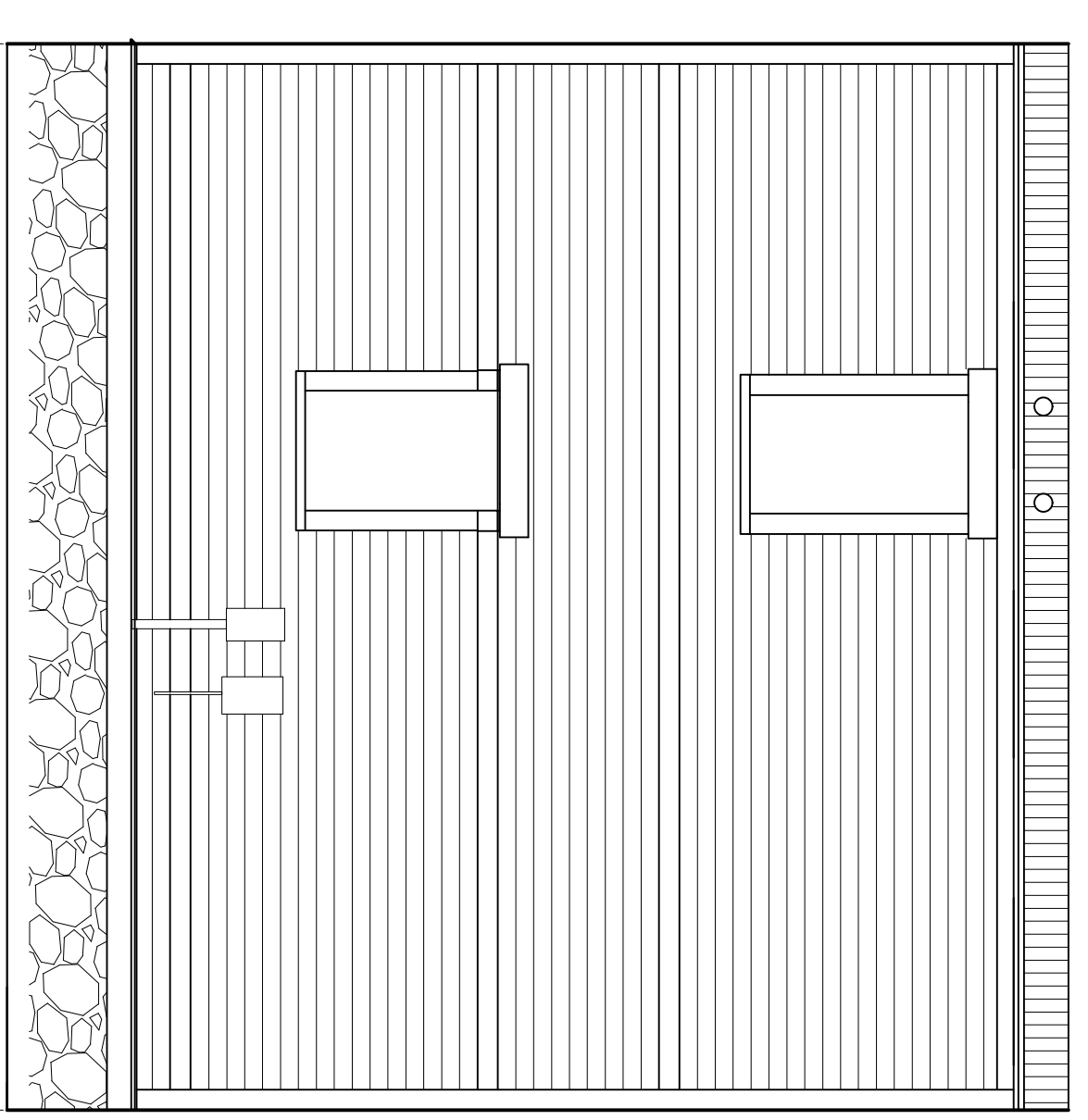
A4
ELEVATION
SCALE: 1/4" = 1'-0"



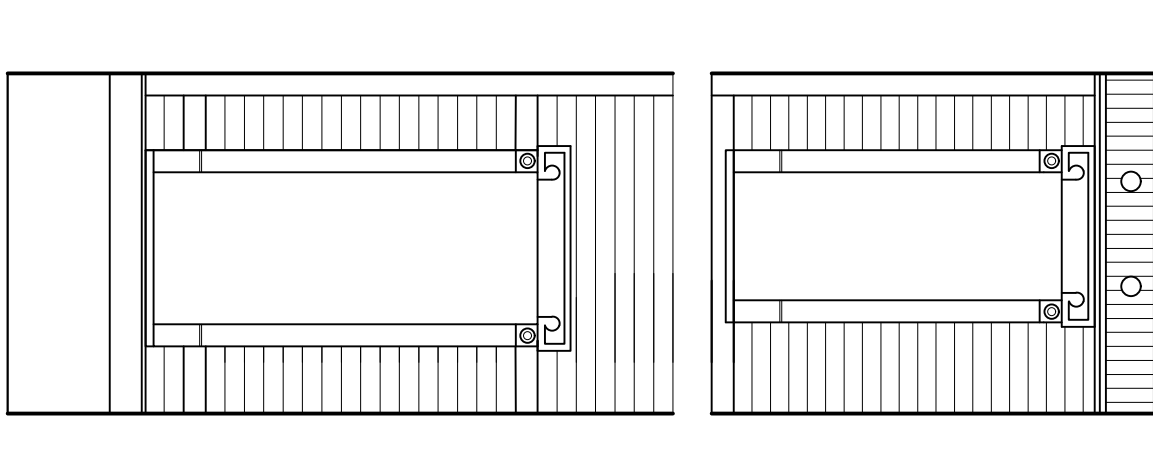
A2
ELEVATION
SCALE: 1/4" = 1'-0"



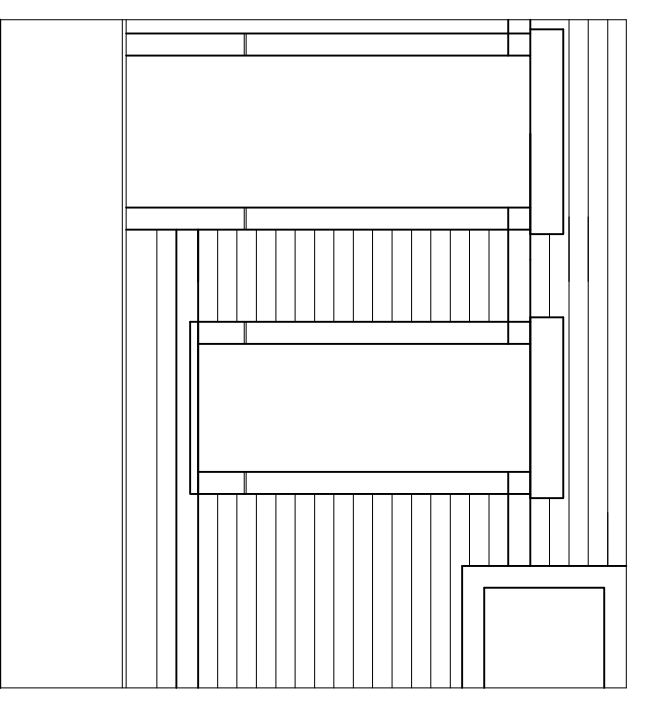
B4
ELEVATION
SCALE: 1/4" = 1'-0"



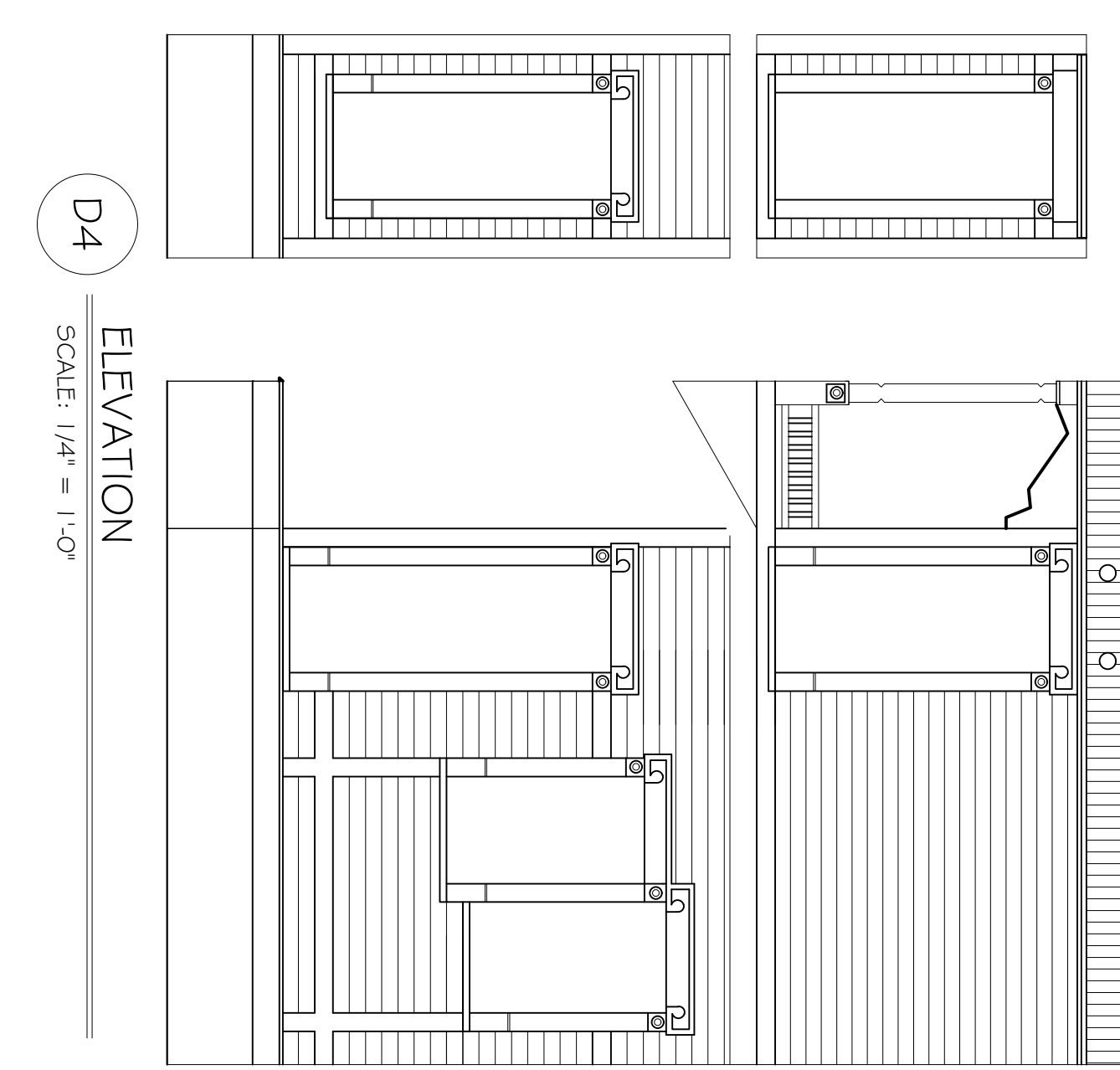
B2
ELEVATION
SCALE: 1/4" = 1'-0"



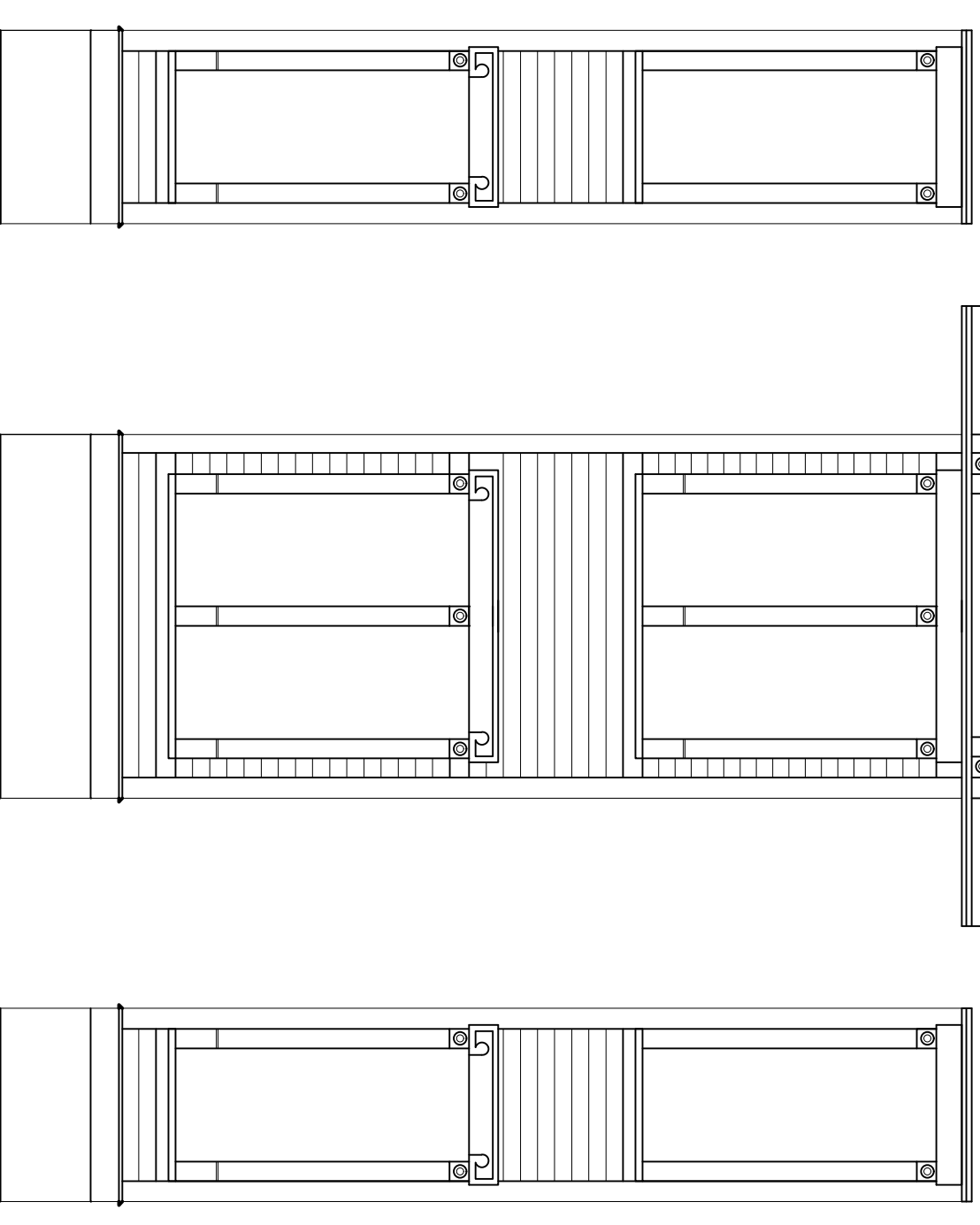
C4
ELEVATION
SCALE: 1/4" = 1'-0"



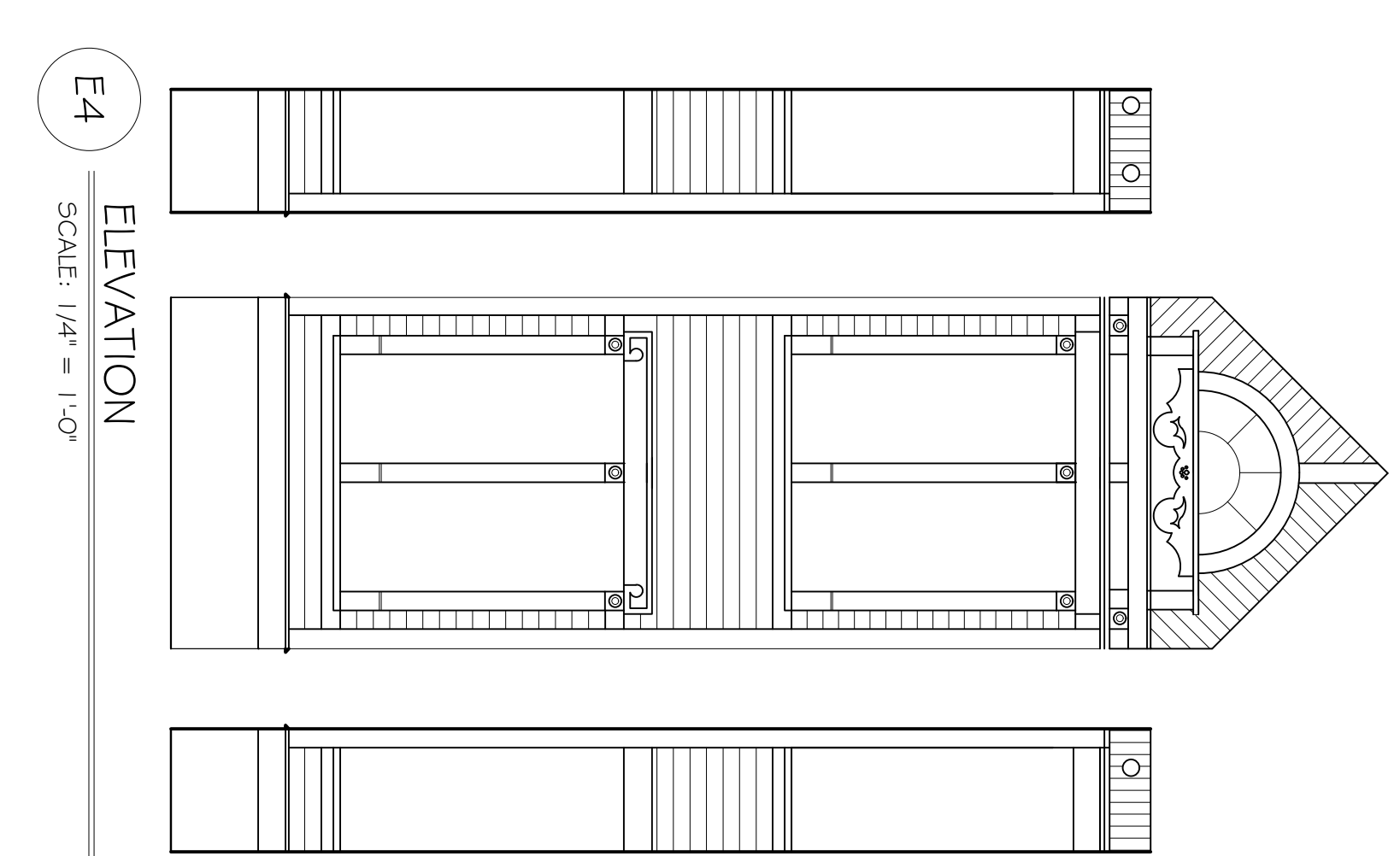
B1
ELEVATION
SCALE: 1/4" = 1'-0"



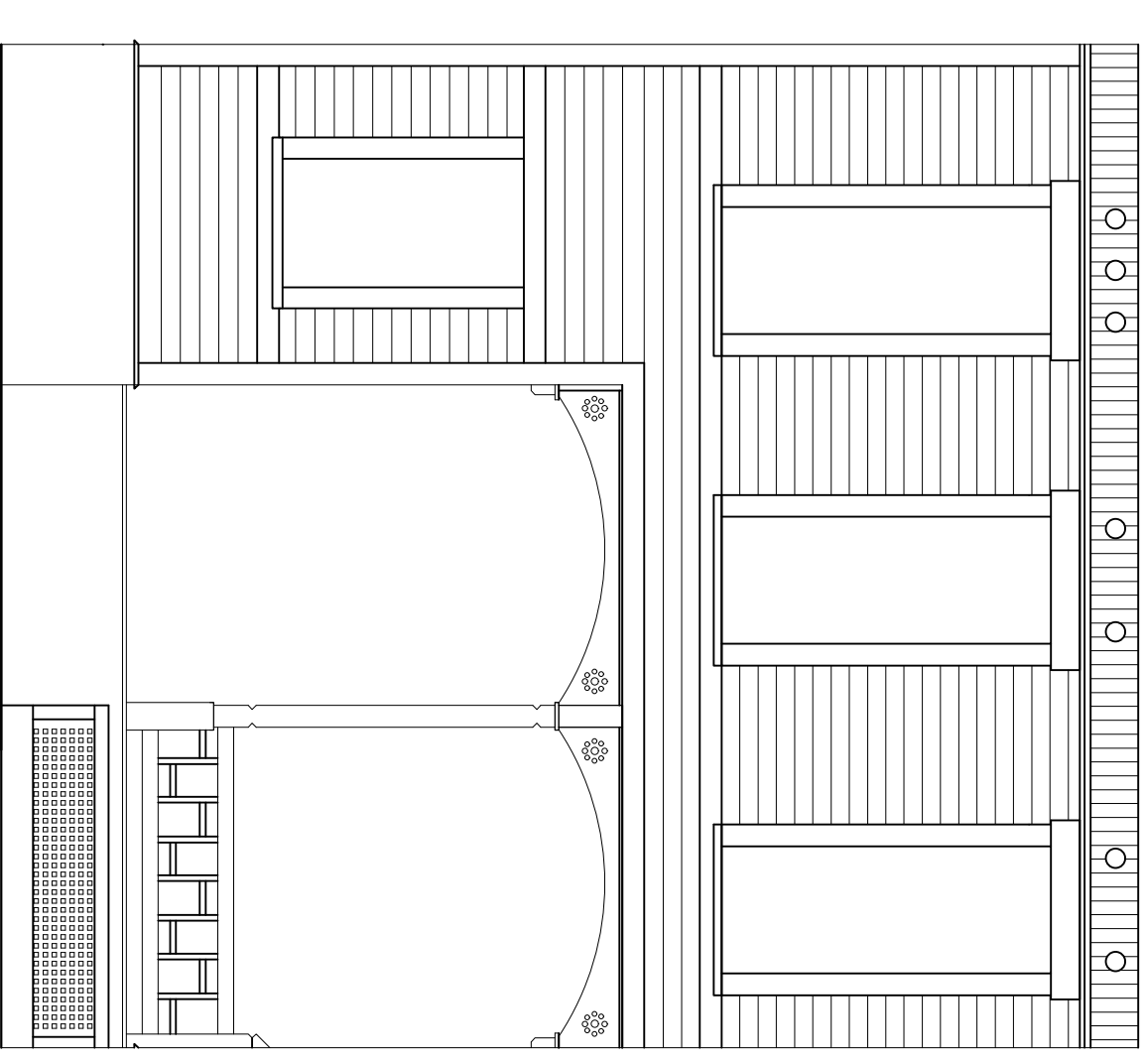
D4
ELEVATION
SCALE: 1/4" = 1'-0"



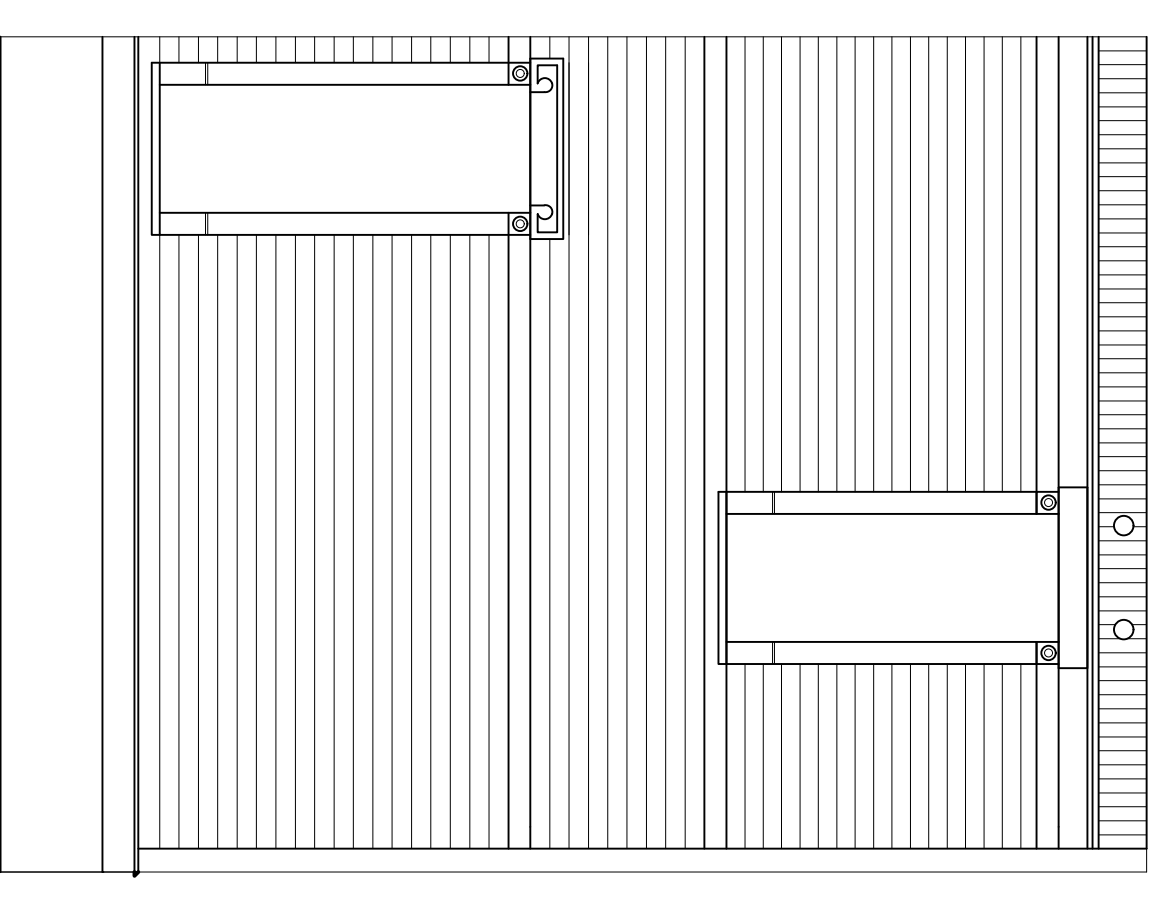
D1
ELEVATION
SCALE: 1/4" = 1'-0"



E4
ELEVATION
SCALE: 1/4" = 1'-0"



E3
ELEVATION
SCALE: 1/4" = 1'-0"



E1
ELEVATION
SCALE: 1/4" = 1'-0"