

Hi, just a reminder that you're receiving this email because you have expressed an interest in Goddess Of Truffles. Don't forget to add info@goddessostruffles.com to your address book so we'll be sure to land in your inbox!

You may [unsubscribe](#) if you no longer wish to receive our emails.



Quick Links

[Encounter the muses](#)

[Get GOT!](#)

[Order form to scan/fax](#)

Follow the Goddess:



Events:

Now Serving at:

The Haven Coffee House

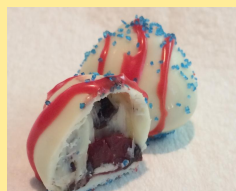
121 East Main,
Lexington
803.356.1402

- Truffles
- Chocolate mousse
- Muesli snack-mix
- Tortes
- Brownies

LOCAL DELIVERY AVAILABLE

Please be aware that for the months of June - September postal shipping services are suspended.

July Muse:



July 6, 2014

Dear GOT Devotee,

Celebrate independence!

This is the theme of the month of July - so I went with it in creating this month's muse, Pleadian (reference to a star seed from the astronomical star cluster Pleiades, also known as Seven sisters).

I have taken liberty in pairing berries and basil, giving it a name from out-of-this-world, & adorning the little temptresses in a stars & stripes inspired manner. Hopefully, the flavor combination along with the visual stimulation will blow your mind like a bottle rocket and play on your pallet like a luminescent sparkler!

Exercise your freedom to indulge at will and share your abundance with your fellow citizens of this great nation.

Let freedom ring! Call ahead to see which flavors are ready and waiting to be released, 356-1402. Or exercise your freedom of speech & place a request.

Q&A:

How long will my muses last?

In general, I would say 2 weeks. Of course this depends on what the ingredients are and your storage method (oh, and how much self-control you have).

Pleadian (Emissary of light in our solar system)

White chocolate, berries & basil ganache/enrobed white chocolate/adorned with red & blue spirit

- *Due to their perishable nature, store your truffles in cool, dry & airtight conditions.*
- *Consume within two weeks of purchase or freeze! To thaw: refrigerate overnight.*
- *Remove from chiller 5 minutes prior to serving.*

The basic ingredients in any truffle are chocolate, cream & butter. I expand on this with several different combinations of additional components to create the flavor profiles I do. This means my style of truffle making is categorized as "non-traditional". Basic truffles can, and should, be kept at cool room temperature in order to appreciate their optimal taste and texture. That's for basic truffles! However, as I create extra-ordinary muses, I tend to prefer chilling mine until just prior to serving. Taking care to avoid humidity as much as possible.

Ideally, you would receive your wonderful box of muses and present them right away. Should there be any remaining it would be fine to store them in the refrigerator for a couple of weeks. If you're wanting to keep them longer, I would recommend putting them in the freezer for up to 4-6 weeks. After that, you really should just order a fresh batch!

In either case they should be stored in an airtight manner and when ready to serve be removed from refrigeration 5 min beforehand.

*Truly,
Lila D.
Owner & Artisan*



Goddess Of Truffles, LLC
www.goddessostruffles.com

Copyright © 2014. All Rights Reserved.

[Forward this email](#)



This email was sent to lilad.lecy@gmail.com by info@goddessostruffles.com | [Update Profile/Email Address](#) | Instant removal with [SafeUnsubscribe™](#) | [Privacy Policy](#).



Goddess Of Truffles, LLC | 109 Mourning Dove Ct | Lexington | SC | 29072