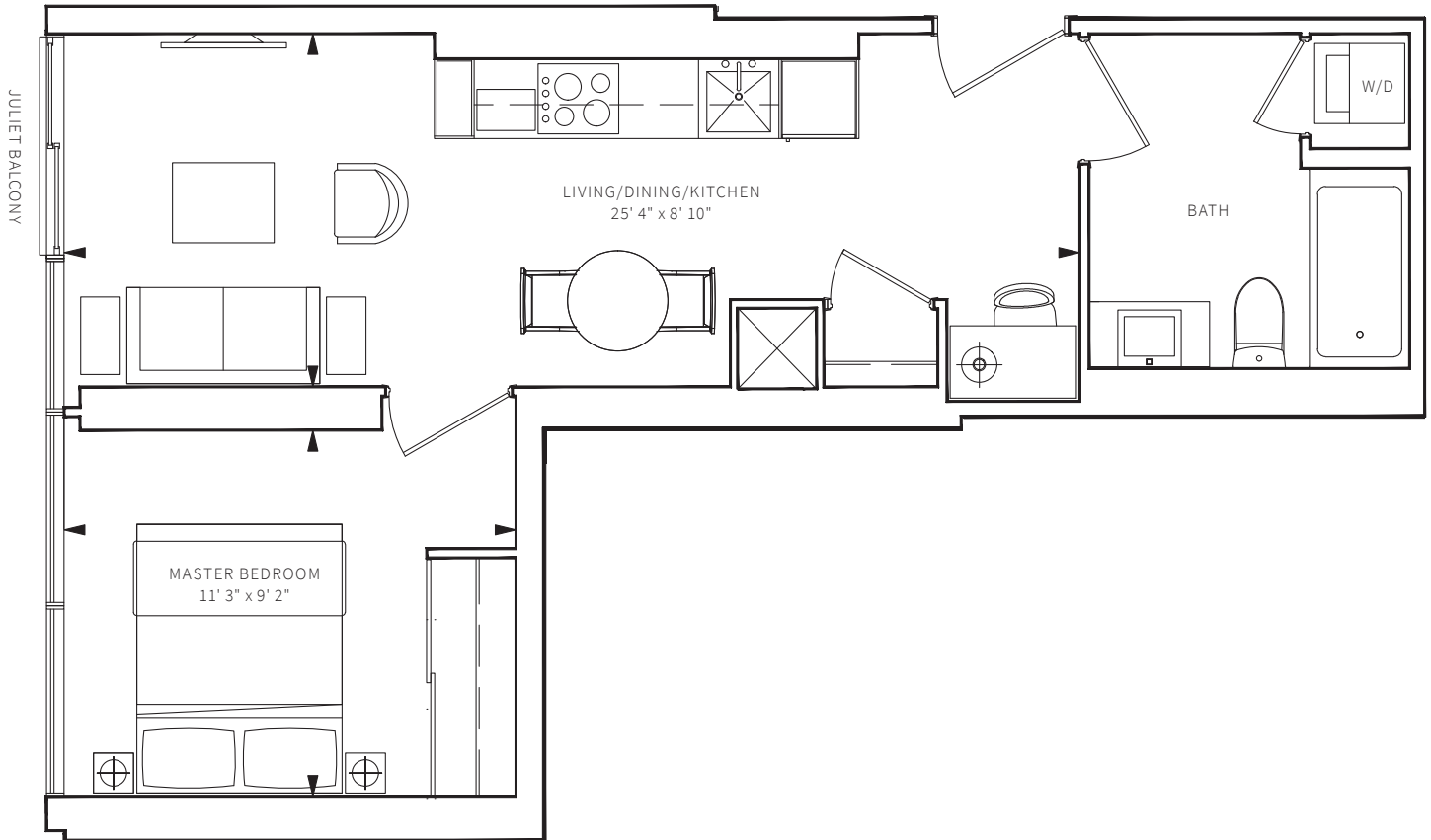




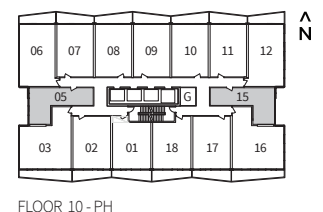
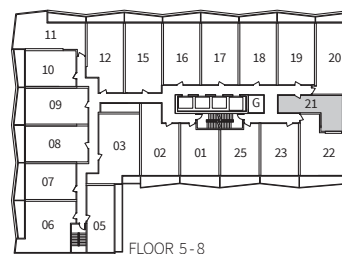
Benchmark Signature Realty Inc Brokerage  
1020 Denison Street Unit 113  
Markham L3R 3W5 ON  
Tel 905.604.2299 Fax 905.604.0622



# AXIS468

## 1 BED + STUDY

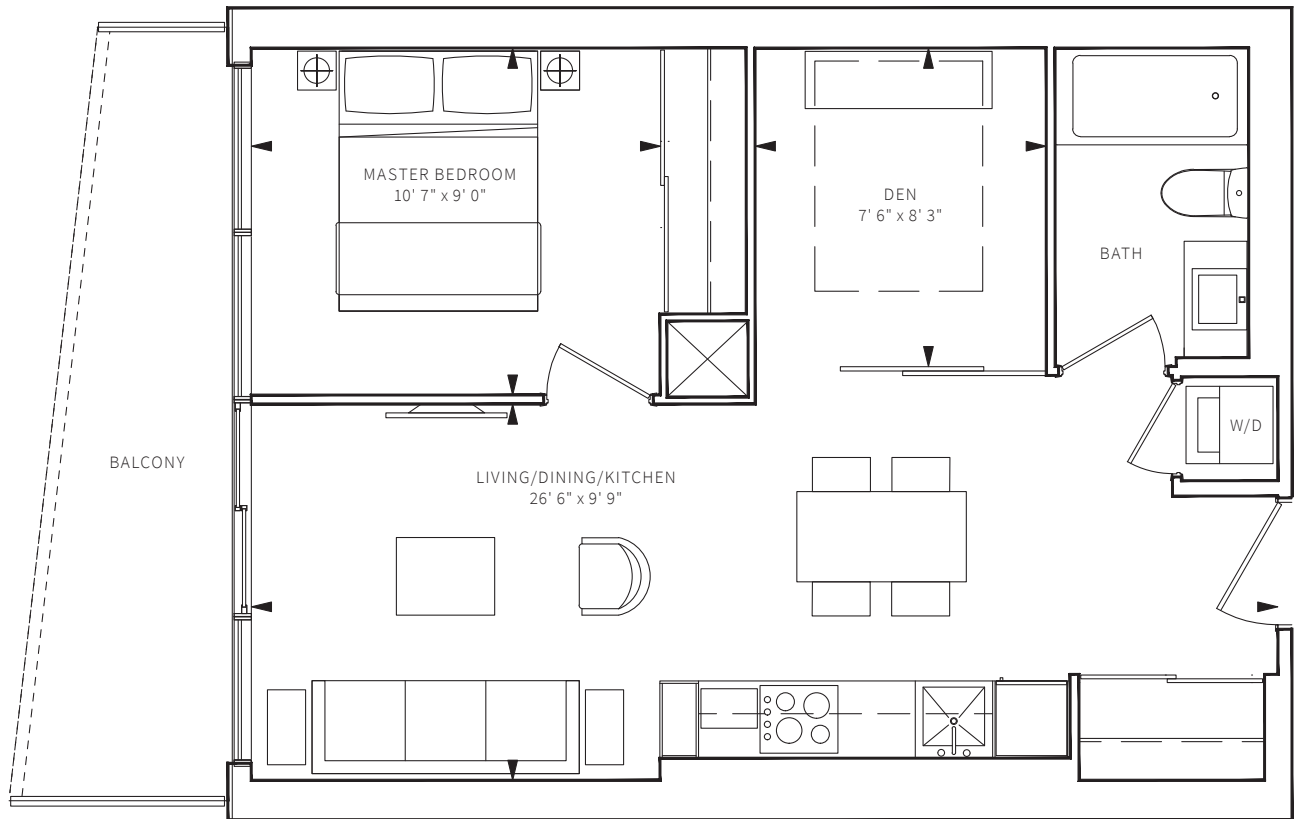
INTERIOR: 468 S.F.



All dimensions, areas and drawings are approximate and are subject to change without notice. Actual area may vary from the stated floor area. E. + O.E. Actual suite and/or balcony may be a reverse mirror image of the plan presented. Refer to building keyplate for actual orientation.



Benchmark Signature Realty Inc Brokerage  
1020 Denison Street Unit 113  
Markham L3R 3W5 ON  
Tel 905.604.2299 Fax 905.604.0622

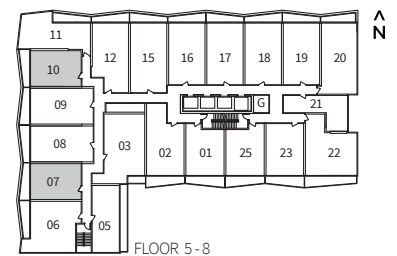


## AXIS641

### 1 BED + DEN

INTERIOR: 555 S.F.

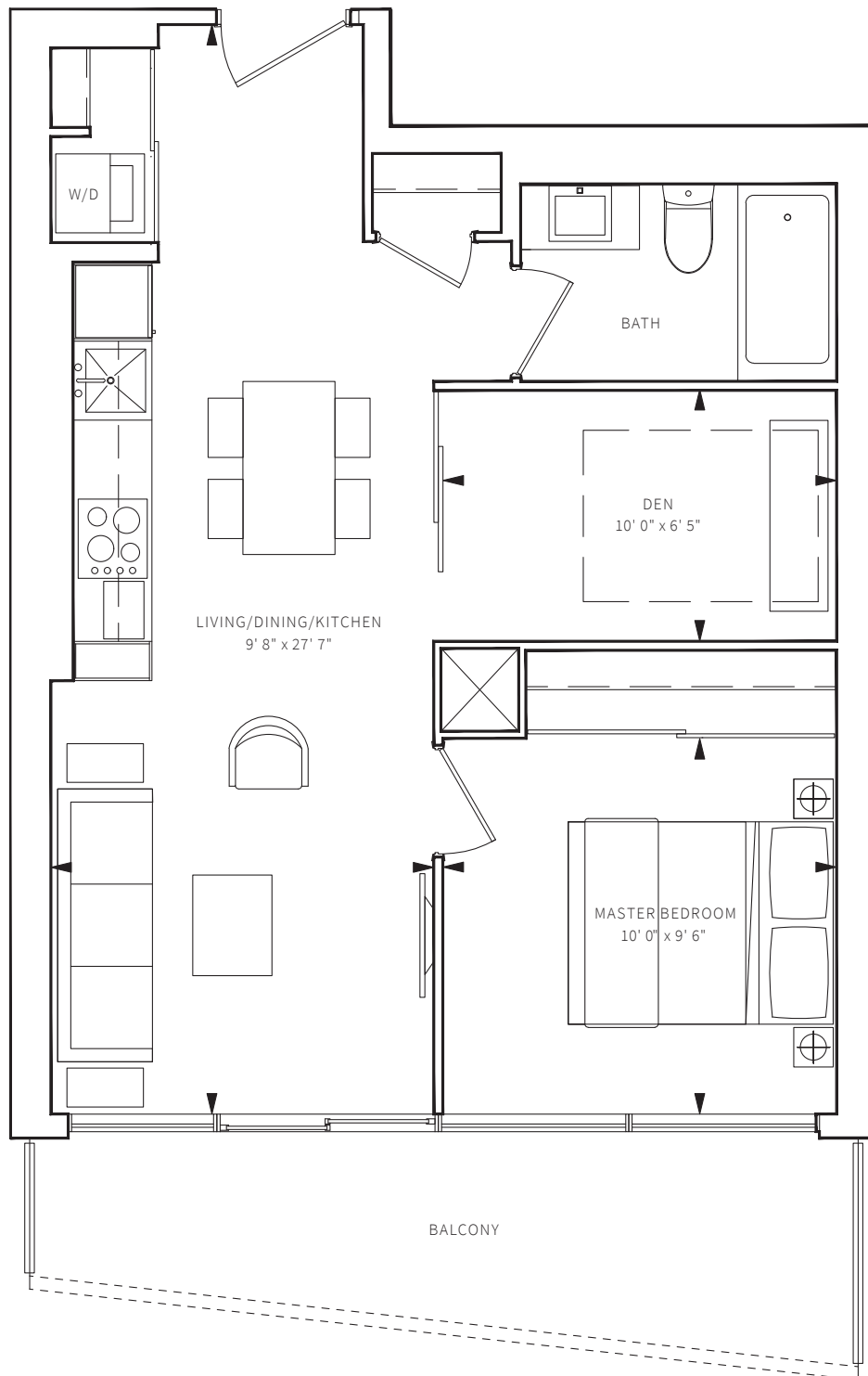
EXTERIOR: 86 S.F.



All dimensions, areas and drawings are approximate and are subject to change without notice. Actual area may vary from the stated floor area. E. + O.E. Actual suite and/or balcony may be a reverse mirror image of the plan presented. Refer to building keyplate for actual orientation.



Benchmark Signature Realty Inc Brokerage  
1020 Denison Street Unit 113  
Markham L3R 3W5 ON  
Tel 905.604.2299 Fax 905.604.0622

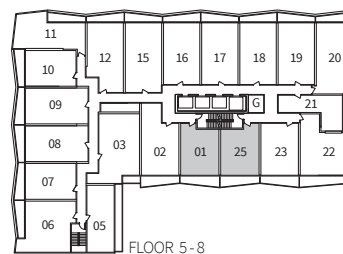


## AXIS668

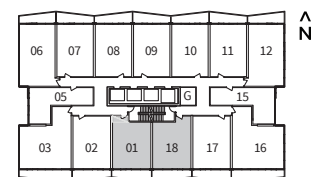
### 1 BED + DEN

INTERIOR: 570 S.F.

EXTERIOR: 98 S.F.



FLOOR 5-8

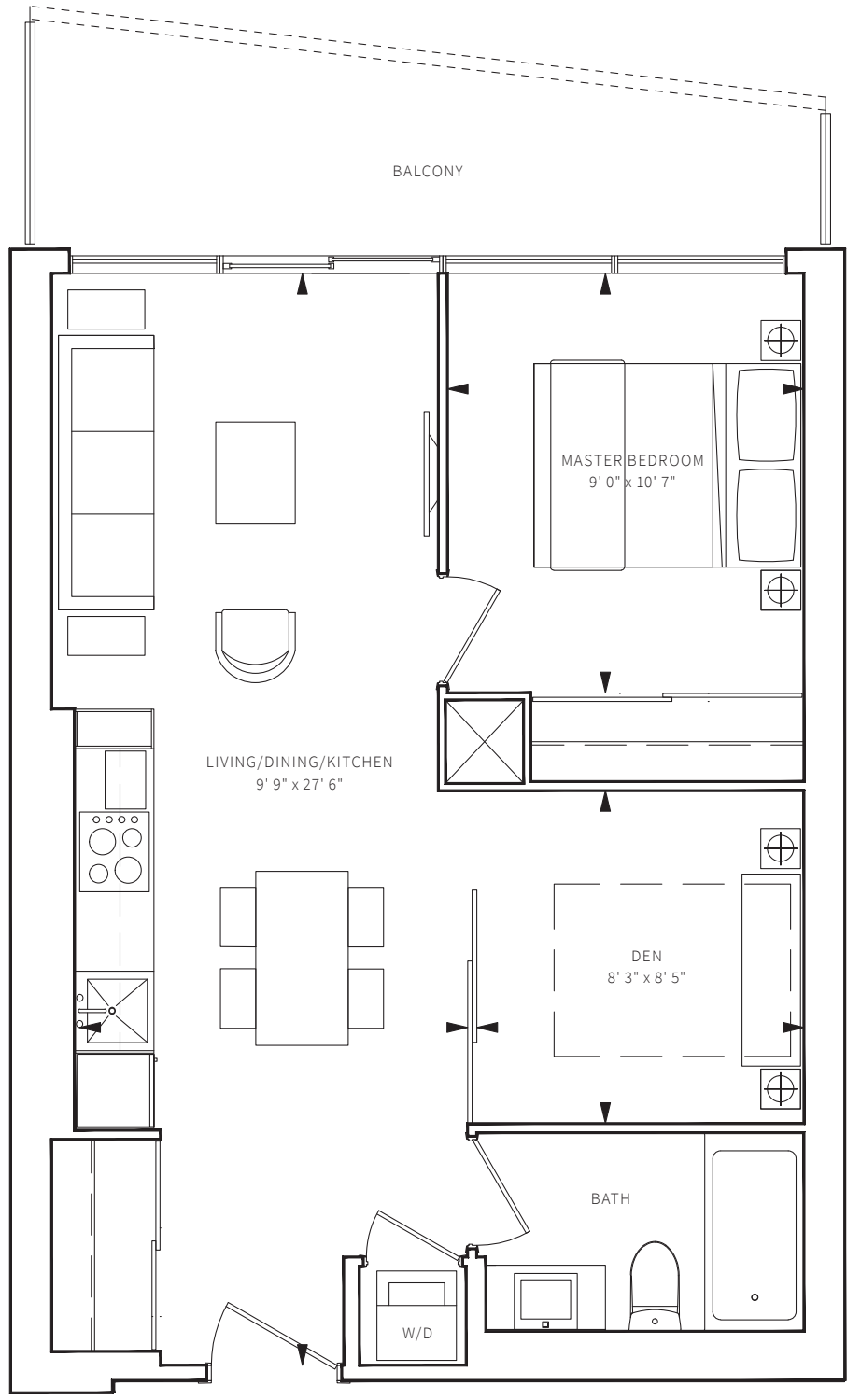


FLOOR 10 - PH

All dimensions, areas and drawings are approximate and are subject to change without notice. Actual area may vary from the stated floor area. E. + O.E. Actual suite and/or balcony may be a reverse mirror image of the plan presented. Refer to building keyplate for actual orientation.



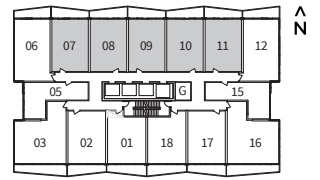
Benchmark Signature Realty Inc Brokerage  
1020 Denison Street Unit 113  
Markham L3R 3W5 ON  
Tel 905.604.2299 Fax 905.604.0622



# AXIS670

## 1 BED + DEN

INTERIOR: 575 S.F.  
EXTERIOR: 95 S.F.

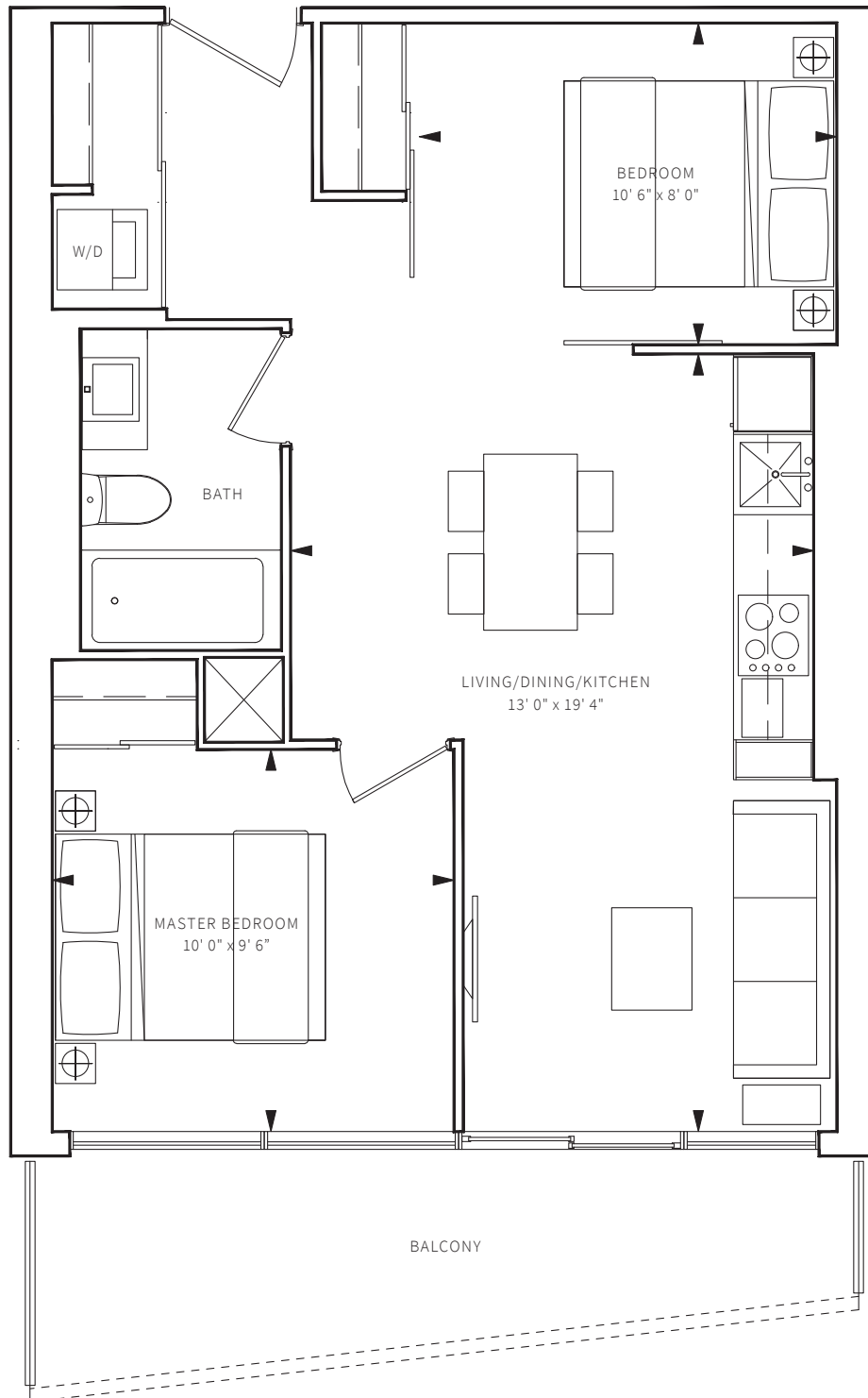


FLOOR 10 - PH

All dimensions, areas and drawings are approximate and are subject to change without notice. Actual area may vary from the stated floor area. E. + O.E. Actual suite and/or balcony may be a reverse mirror image of the plan presented. Refer to building keyplate for actual orientation.



Benchmark Signature Realty Inc Brokerage  
1020 Denison Street Unit 113  
Markham L3R 3W5 ON  
Tel 905.604.2299 Fax 905.604.0622

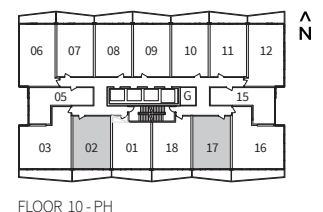
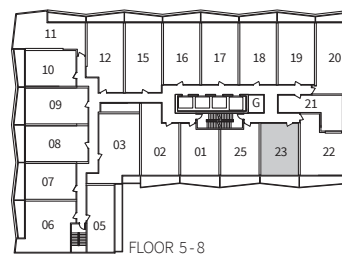


**AXIS688**

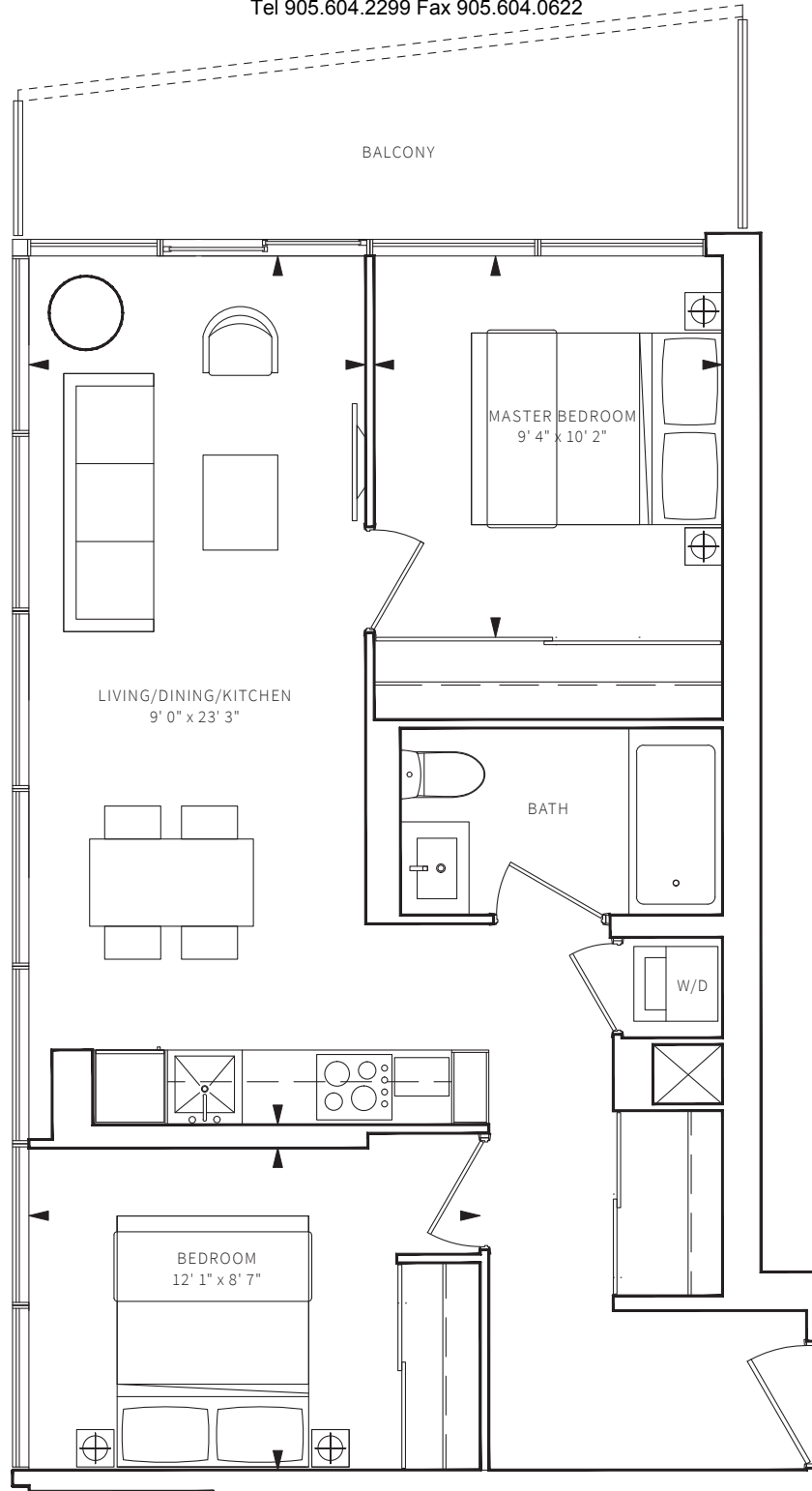
**2 BED**

INTERIOR: 590 S.F.

EXTERIOR: 98 S.F.



All dimensions, areas and drawings are approximate and are subject to change without notice. Actual area may vary from the stated floor area. E. + O.E. Actual suite and/or balcony may be a reverse mirror image of the plan presented. Refer to building keyplate for actual orientation.

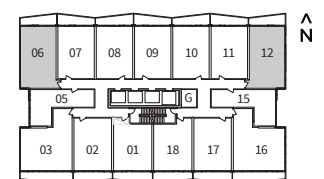


## AXIS762

### 2 BED

INTERIOR: 670 S.F.

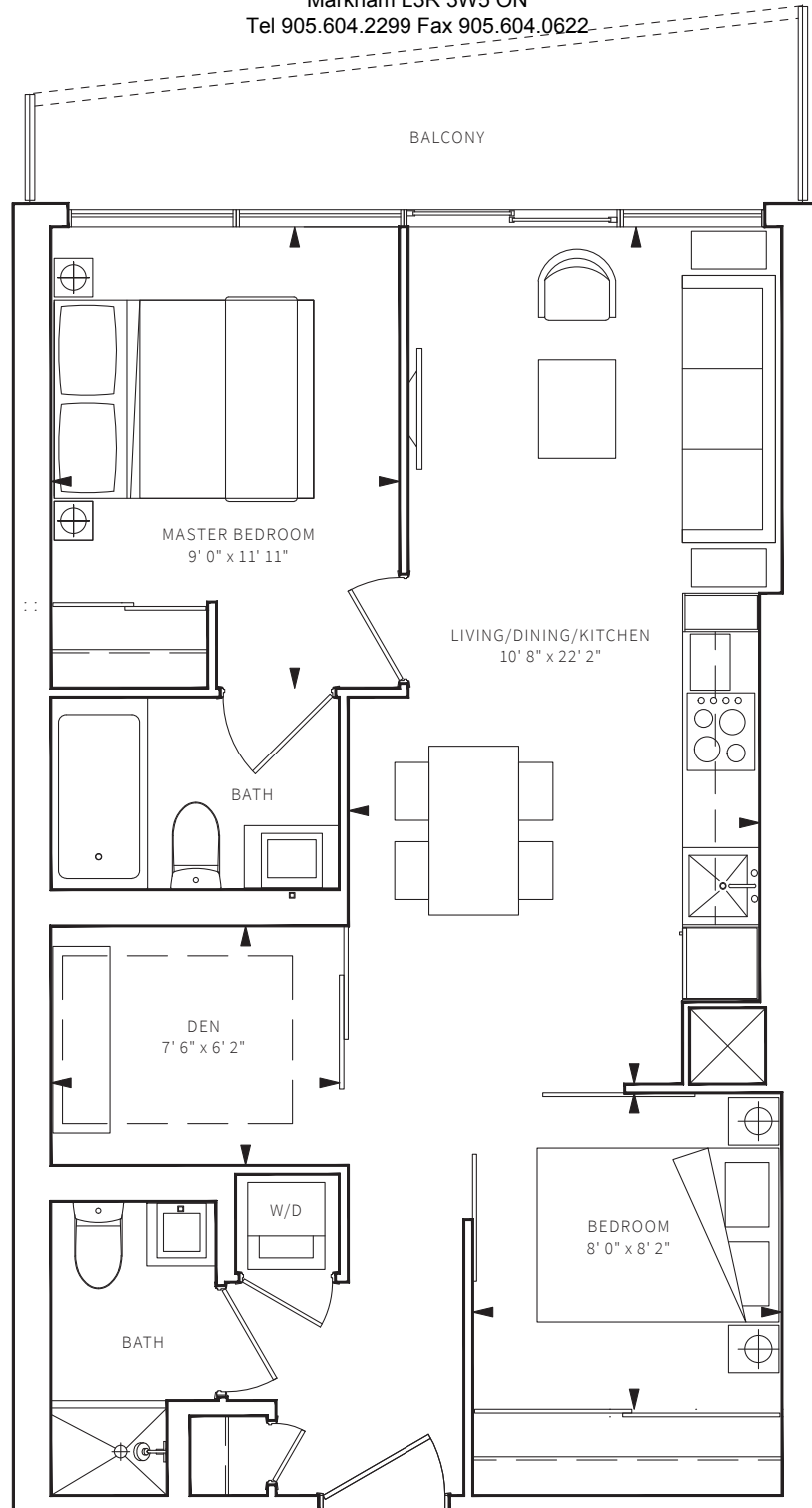
EXTERIOR: 92 S.F.



FLOOR 10 - PH



Benchmark Signature Realty Inc Brokerage  
1020 Denison Street Unit 113  
Markham L3R 3W5 ON  
Tel 905.604.2299 Fax 905.604.0622

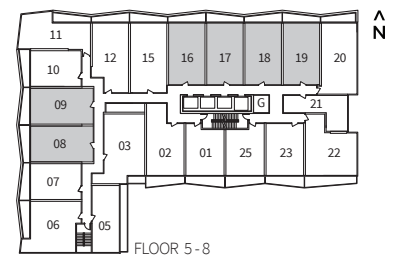


## AXIS775

### 2 BED + DEN

INTERIOR: 680 S.F.

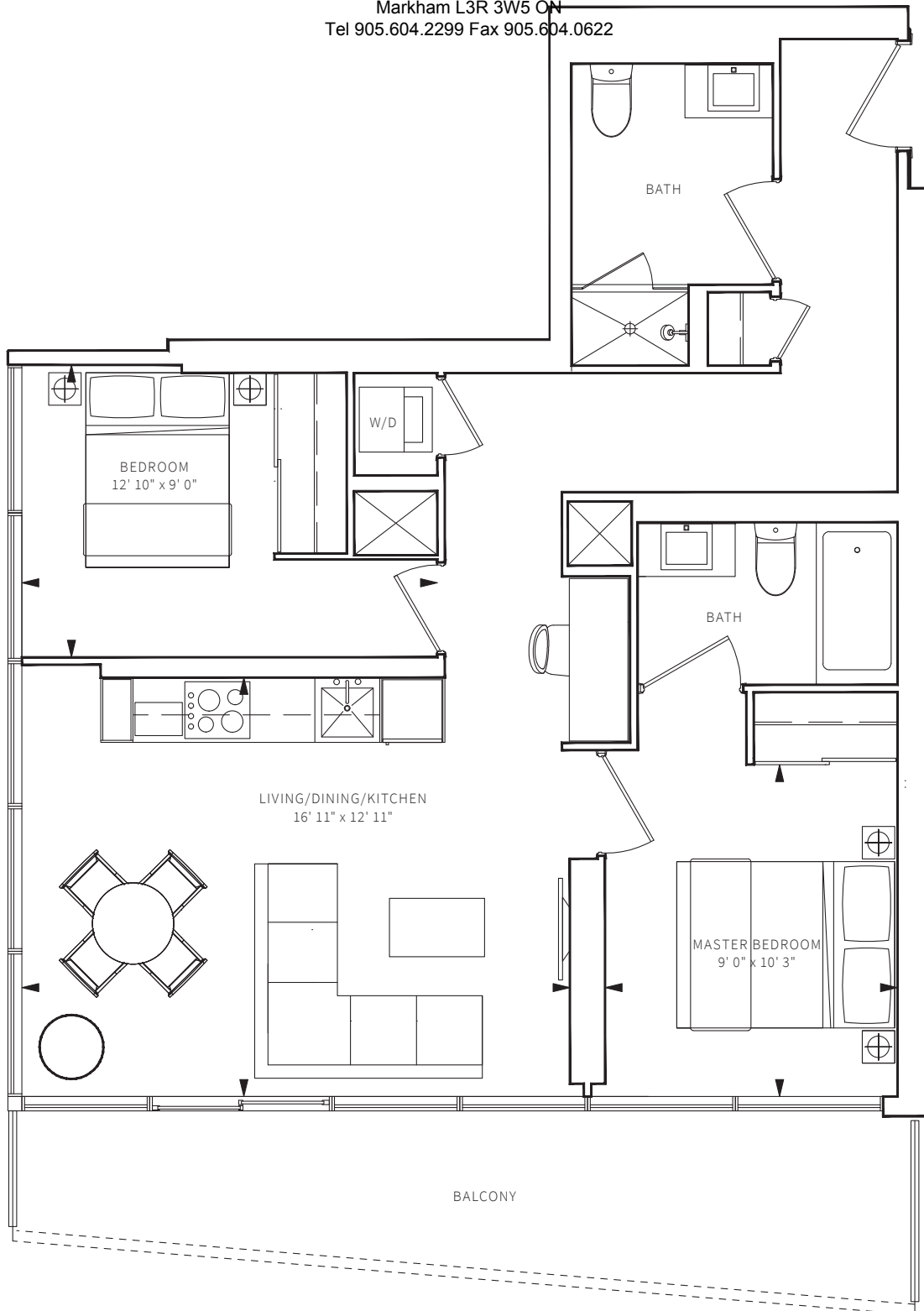
EXTERIOR: 75 S.F.



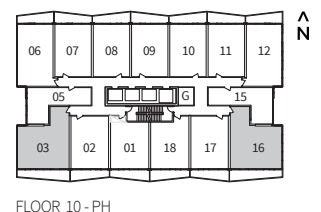
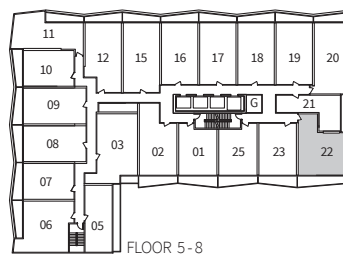
All dimensions, areas and drawings are approximate and are subject to change without notice. Actual area may vary from the stated floor area. E. + O.E. Actual suite and/or balcony may be a reverse mirror image of the plan presented. Refer to building keyplate for actual orientation.



Benchmark Signature Realty Inc Brokerage  
1020 Denison Street Unit 113  
Markham L3R 3W5 ON  
Tel 905.604.2299 Fax 905.604.0622



**AXIS907**  
**2 BED + STUDY**  
INTERIOR: 775 S.F.  
EXTERIOR: 132 S.F.



All dimensions, areas and drawings are approximate and are subject to change without notice. Actual area may vary from the stated floor area. E. + O.E. Actual suite and/or balcony may be a reverse mirror image of the plan presented. Refer to building keyplate for actual orientation.