

THE EXHIBITION THAT TRAVELS

Palazzo Tiepolo Passi // Venice Biennale 2019

National Museum of Siena "Santa Maria della Scala" // spring 2020



LOVE IS BLIND OPERA
OPERE

BLIND FOR LOVE

Curator and artist, Caroline Lépinay

Honorary Commissioner, Jacques Chamay, Honorary Curator of the Art Museum
& of Geneva History, archaeologist and art historian

Comissioner, Giandomenico Romanelli, former Director of Heritage & Museums
of the City of Venice, art historian.

Sponsorship, Luciano Pavarotti Foundation

A VENETIAN SUCCESS

THE NUMBERS

On the occasion of the Venice Biennale 2019, "*Love is blind, blind for love - Opera/Opere*" started its journey at Palazzo Tiepolo Passi, on the Grand Canal, from May 9th to November 9th

6.000 itineraries.

24.000 blindfolded and **4.000** unblindfolded visitors resulting in **56.000** hands.

141 days introducing people to the artworks.

41 days added to the programme in order to meet the increasing interest in the artworks.

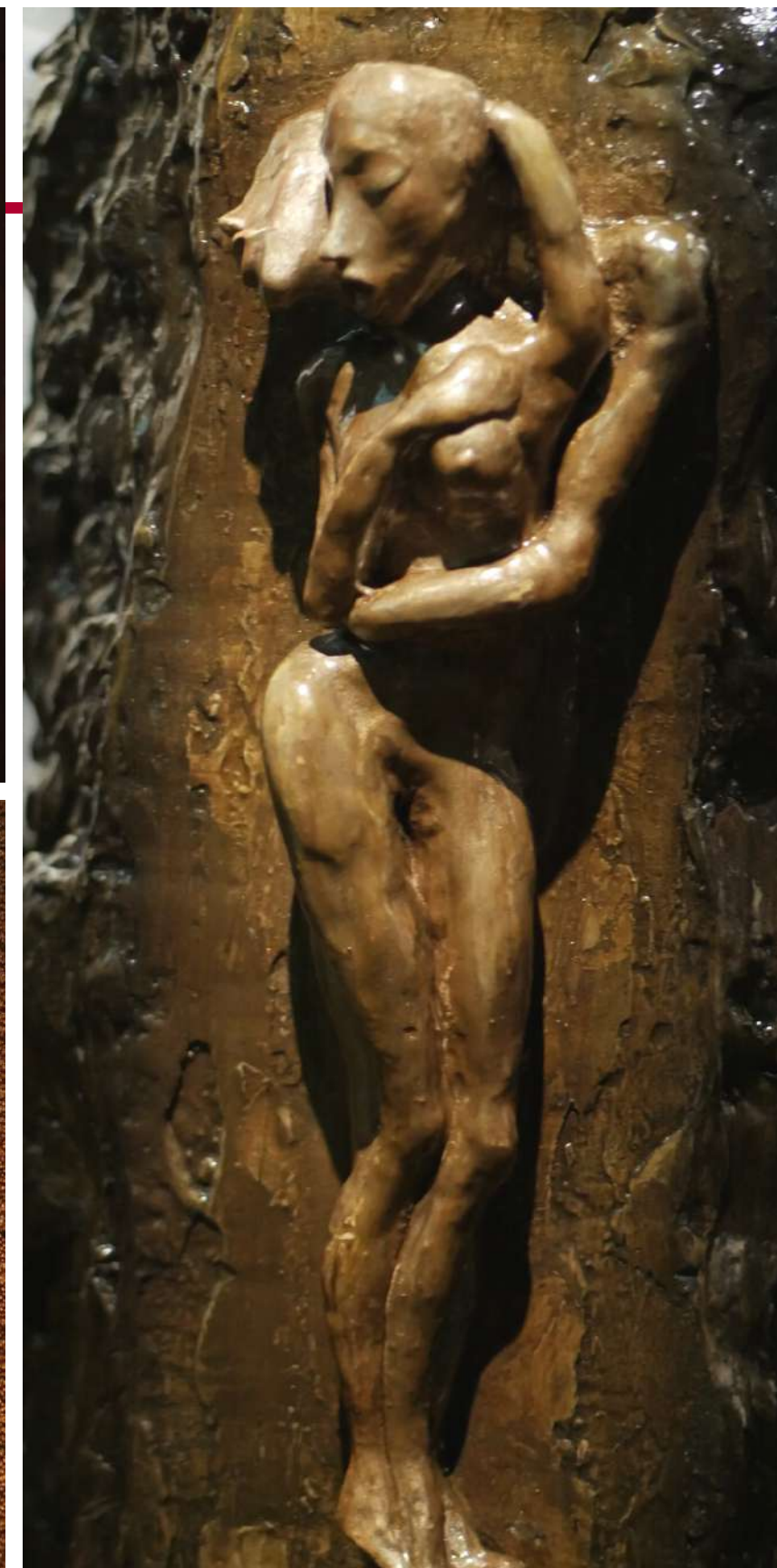
Television reports on Rai1 News, Rai3 News, TGR Veneto, Euronews Italia, Euronews World, RETE8

36 artworks

250m² wide exhibition space

2 songs composed and performed by Caroline Lépinay

9 songs performed by Luciano Pavarotti



WHAT PEOPLE SAY

“UNFORGETTABLE”, “UNIQUE”,
“EMOTIONAL”, “LIBERATING”.

The guest book has been filled with thousands of messages, because everybody feels the need to share their experience, **mostly referring to the exhibition as: “unforgettable”, “unique”, “emotional” and “liberating”.**

Four words that are repeated throughout the guest book with their infinite meanings: original, extraordinary, unusual, profound and deeply moving.



FROM VENICE, FROM THE WORLD

THE POWER OF WORD OF MOUTH

The power of word of mouth has been unexpected and unstoppable from the very beginning; most of the people that came from Venice and from all over the world had heard of "*Love is blind, blind for love - Opera/Opere*" from friends.

Many came back to start the journey all over again and revive the feelings and deep emotions they had sensed during their first visit to the exhibition.

Other than sharing thoughts and memories on the Guest Book, visitors would also **give presents to the artist and guides to thank them for the unique experience.** Also, social media like Facebook and Instagram were populated with pictures and posts about "*Love is blind, blind for love - Opera/Opere*".



ATTENTION FROM THE MEDIA

A SPONTANEOUS INTEREST

Attention from the media came totally unexpectedly: journalists came to visit the exhibition and **decided to share their enthusiastic impressions** with their audience.

Soon the news spread through the **newspapers**, among which the Gazzettino, and **online on art websites** like Exibart.it; **national and international media**, from RAI to TV8 and Rete8, Euronews (France, Germany, Spain, United Kingdom, Greece, Turkey, United Arab Emirates, Russia) showed their interest for the artist's work.

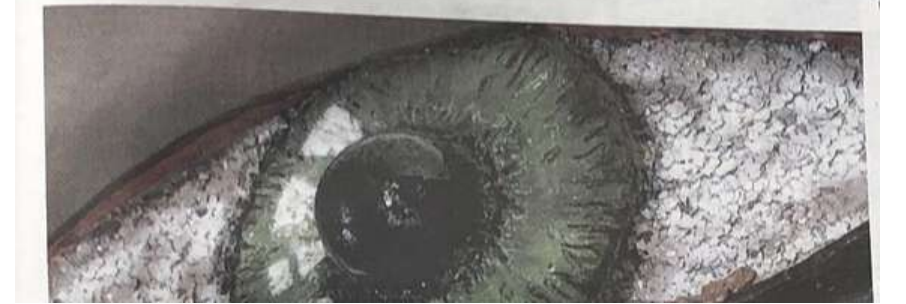
"A unique and emotional exhibition that opens the senses to life and love", Alma Grandin, Rai 1

"A one of a kind initiative", Francesca Catalano, Il Gazzettino

"The extraordinary power of art is to impact on our lives on an innate, ancestral level, marking us so deeply that we can truly reach a new maturity. Love is blind, blind for love has this potential: through the strongest experience, it skips the steps and speaks straight to our empathy" Carlo Tinti, designer and journalist, Wanna Magazine

"It's the sensorial experience offered by a new unique exhibition in Venice", Daniele Chica, Economista.info

Bendati tra le opere
in cerca dell'essenza



LOVE IS BLIND

OPERA
OPERE

BLIND FOR LOVE

UNIQUE AND UNFORGETTABLE BECAUSE

It overcomes all creative and human barriers

It is a compound of many art forms: visual, musical, olfactory

It is composed as a musical piece

It is a surrealist immersion

It is multisensorial

You can "see" it even with touch, blindfolded

It stimulates the emotional memory through the senses

It is an intimate journey throughout Humanity

It tells a deep and positive message



THE ART OF EMOTION

BEYOND THE BARRIERS

"LOVE IS BLIND, BLIND FOR LOVE - OPERA/OPERE" goes beyond the limits of our senses to meet the art of emotion.

The exhibition is an eclectic and artistic compound of **tactile stimuli, musical and vocal suggestions, olfactory and visual solicitations**, which the artist puts together in an infinite stream of feelings.

The artworks are divided into **9 moments for a total of 36 pieces of art**, including those of the guest artists.

It's **an adventure anyone can live, which goes beyond the barriers of handicaps, age, gender, nationality and culture**.

Everyone is just the same in for the first part of the journey: without sight, so that the senses are left to guide us. The lack of sight is not to be considered a shortcoming; it is in fact a great opportunity since the true artistic experience lies in the power of caress.



OPERA/OPERE

A MULTIPLE CREATIVITY

The word game **OPERA/OPERE** is related to the connection of two different artistic forms: the musical **OPERA**, which Caroline Lepinay considers among the highest expressions of art, and **OPERE**, that stands for artworks in Italian. In this double meaning the artist shines a light on her eclectic creativity.

The itinerary follows the story of Agape, **written as a musical opera by the artist**, and it brings together operatic arias by Luciano Pavarotti and original tunes.

The artworks, of different sizes and materials, as resin, wool, metal, crystal and soil, surround visitors with a **surrealistic atmosphere**.



EROS/AGAPE E PSYCHE

VIAGGIO NEL CUORE DELL'UMANITÀ

The thread that connects the elements in the exhibition is **love in all of its forms**.

The exhibition is **inspired to the tale of Cupid and Psyche, written by Apuleius in his Metamorphoses**. The tale depicts a sort of asceticism through different stages of spiritual refining in order to reach moral perfection or full “divine” awareness, beyond the conditioning by passion or the weight of the physical aspects of the senses.

This knowledge is only possible by relying on pure love, the one that the artist identifies with the term and **the Greek concept of "Agape"**, dear to Christians because it indicates God's love for humanity, which in its original meaning implies immeasurable and disinterested love.



LOVE/VANITY

YOU CAN'T SEE LOVE WITH YOUR EYES

The story of Agape tells the intimate journey of a great singer who, going from the world of the visible to that of the invisible, recalls Psyche, the woman he loves, and suffers because he will never see her again.

So, **he begins to see his story through "the eye of the soul"**, realising that his vanity has made him blind to the woman he loved, and in this realisation, he finds peace and harmony.

It's only at this point that the god Eros allows him to see Psyche again, because **"Love is not seen with the eyes, but through the soul"** (Descartes)

The first original and unpublished act carried out by Caroline Lépinay is that of **giving personality to Agape** who, to some extent, takes the place of Eros-Love. Not only is Agape the point of arrival of a process of spiritual refinement, but he is also the red thread **to widening and deepening knowledge and empathy**, leading him to a higher level, to a fuller and more aware humanity. Psyche, the woman he loves, represents here the voice of the soul and his way of reaching it.



A SURREALIST IMMERSION

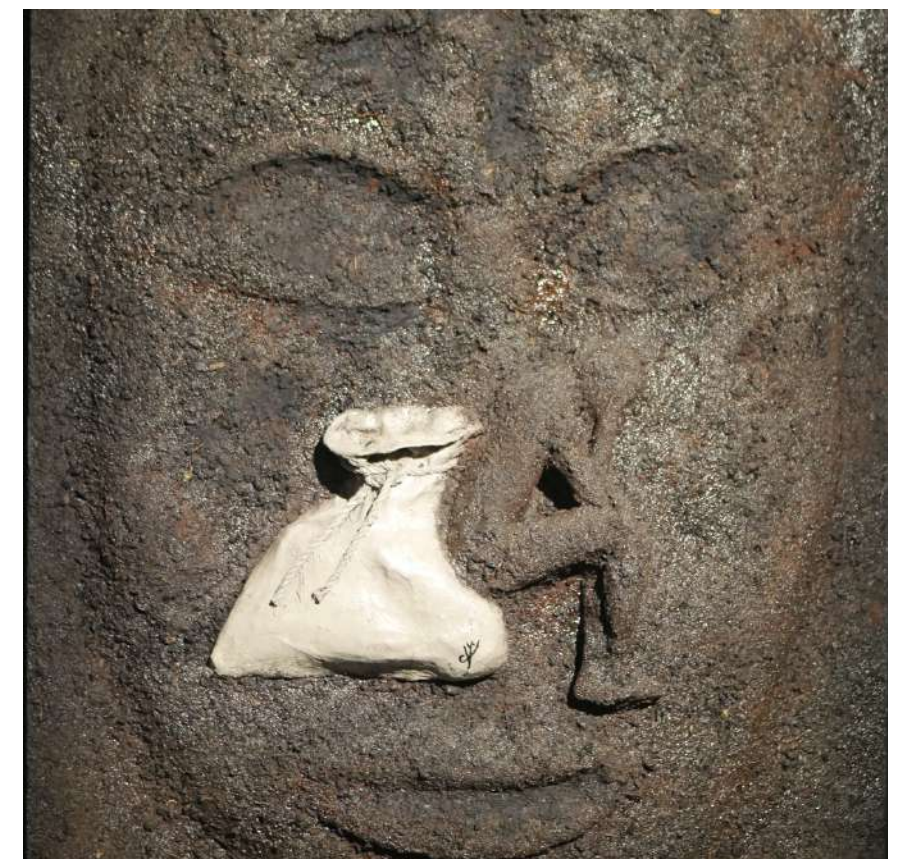
DA SALVADOR DALÌ AD AUGUSTE RODIN

Visitors, guides, works and Opera are all protagonists and actors of the scenic representation. All are part of a dreamlike journey, unique and intimate for every visitor.

The roots to Caroline Lépinay's expressively are unquestionably anchored in the Surrealist context, with especially careful attention for a **dreamlike dimension that can be traced back to Salvador Dali's experimentation and exploration of form.** Yet there is no lack of references, and even some citation, from the Symbolists' works, moods and environment.

Ms. Lépinay's creativity repertoire also significantly reflects another artist she indicates as inescapable in his influence: Auguste Rodin. And so a point stemming from Rodin becomes a sort of focus, a turning or a junction in the exhibition path: it gives origin to what we could define as a kind of reflection on oneself and one's inner working.

In fact, "The thinker" experiences the typical condition of melancholy and yet puls from within himself the energy to return to the path of spiritual improvement.



GOAL: SELF-HARMONY

A MULTISENSORY EXPERIENCE

The artist's strength is the ability to offer visitors the chance to experience, through the story of Agape and Psyche, the transformation process that **brings the self back to its most intimate core.**

To re-immense in one's self means finding that alive and unique part of one's existence, to build a reconciled being, in peace, in harmony and in unity.

Temporary blindness allows and facilitates the achievement of this positive goal, to feel a fullness of Love capable of going beyond sensual Love, as well as of every concession to the Ego selfishness. However, without renouncing the experience of the senses which indeed become the obligatory path of self-realization.

In this journey, visitors are accompanied by the hands of reassuring special exhibition guides, who are blind, partially sighted or able to see. **This act of leading is an intimate gesture that requires trust on the part of the visitor, empathy, tenderness and sweetness on the part of the guides.**



CAROLINE LÉPINAY

MATTER, MUSIC AND SOUL

Caroline Lépinay is one of those artists whose work makes us love other people for who they are. In her creations she does not stop at delving into their bodies: she delivers us their souls. The strength of art is the intimacy that carries us to the heart of emotion.

"Caroline "plays" on a multi-plane piano, with "keywords" enabling her to strike harmony with various instruments of language, with diverse materials and with well-differentiated literary and poetic genres"

Giandomenico Romanelli, Art historian and former Director of Venetian Civic Museums

"Visiting Ms. Lépinay's show is a little like venturing into the Earth. It is like seeing the full dimensions of our soul, our mind and our body from another angle. Her operatic dramatisation takes us on a voyage where all our senses are awakened, emerge, are fine-tuned and become triumphant. We are witness in a certain sense to the birth or rebirth of love, as well as love used to represent a great deal more than merely a blind Cupid shooting arrows into people's hearts; it was a primordial power standing as a seed to the creation of humanity."

Jacques Chamay, Honorary Commissioner MAHG, archaeologist and art historian



CREATIVE TUNING

STEEL AND STONE

Between Caroline Lépinay and the guest artists the ideas come together and an artistic collaboration is born in exchange, sharing and simplicity.

FRED BERTHOLD

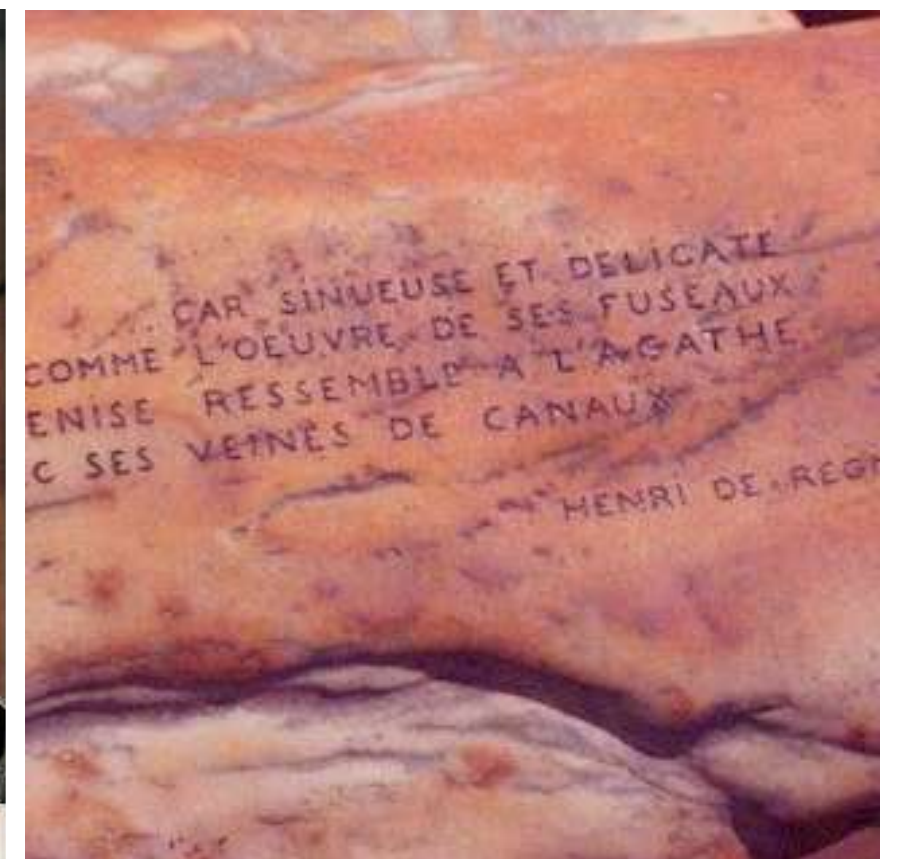
(Artist, sculptor and designer)

Caroline calls on Fred Berthold for his stainless-steel spheres. She sees in them a representation of her “Eye of the soul”.

PHILIPPE NICOLAS

(Knight of the Order of Arts and Letters, master glyptician (Cartier))

The encounter with Nicolas comes from a passion shared around stones and the work of matter. For the exhibition he chose to make an engraving on an old torrent stone.





...in its effort to promote inclusive art that is aimed at all, and for its accent on music.



...to the tactile dimension of her works and their creative richness especially in terms of materials.

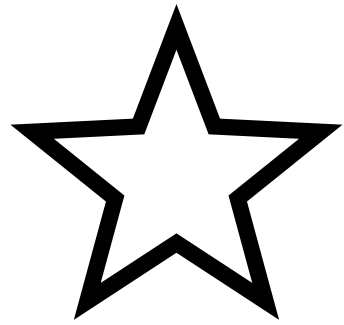


...for its inclusive approach that enables blind and partially sighted people to access art and that makes handicap no longer a weakness but a strength.

THE SPIRIT OF THE PATRONAGE

HANDS AND VOICE AT THE SERVICE OF LOVE

CONTACTS



US contact
Dave Mc Crory
Mobile: + 1 415 827- 4342

FOR INFORMATION

Contact: Caroline Lépinay
Mail: caroline.lepinay@me.com
Mobile: +41 79 353 6161

Facebook: <https://www.facebook.com/loveisblindforlove/>
Instagram: @carolinelepinay_artworks

