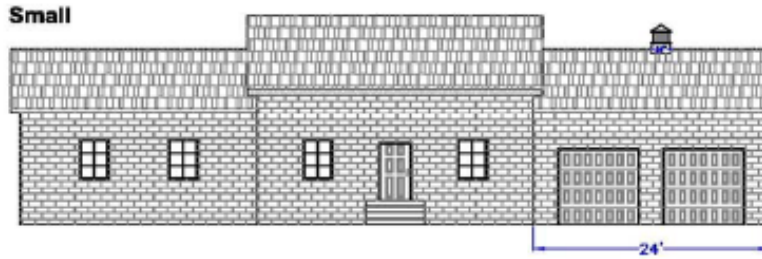
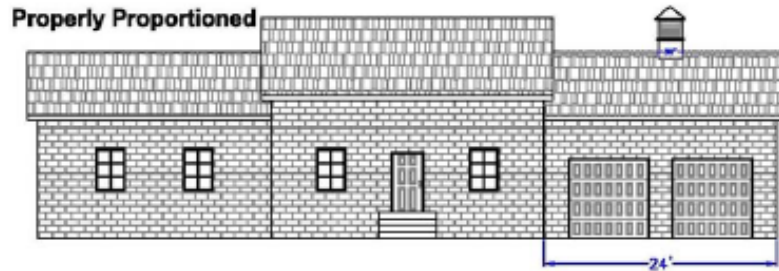


Cupola Sizing—24' long Garage

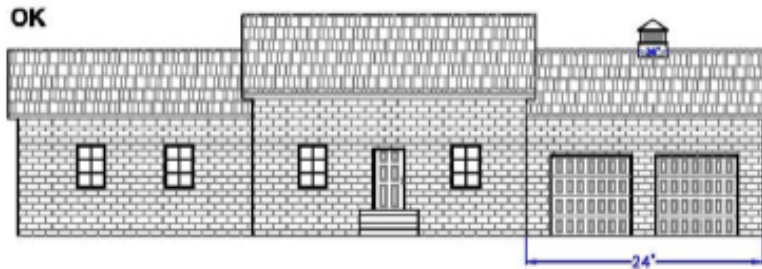
When properly sizing a cupola, a general rule of thumb is a minimum of 1.25" of cupola base width for every foot of unbroken roof ridge line. On this 24' long garage, the recommended cupola base width is 30" or greater.



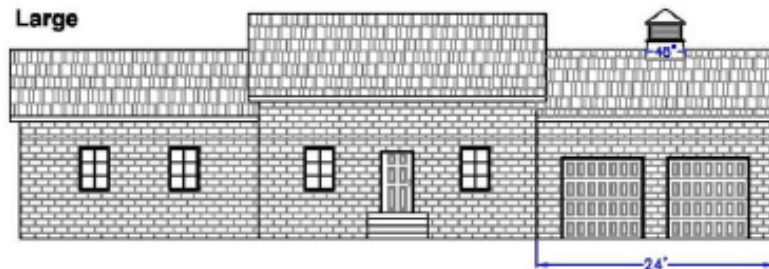
The model 200 cupola with 24" wide base appears too small for this 24' garage



The model 30-LPK cupola with 30" wide base is properly sized for this 24' garage



The model 300 cupola with 36" wide base is also properly sized for this 24' garage



The model 400 cupola with 48" wide base appears too large for this 24' garage



PIEDMONT
COMPOSITES & TOOLING

33 Lewittes Road

Taylorsville, NC 28681

Phone: 828-632-8883 Fax: 828-632-5585

www.piedmontcomposites.com