



Wild Flowers  
Growing  
On the  
Cullompton  
Community  
Fields



Spring  
and  
Summer  
2009





Kingcup  
Marsh Marigold



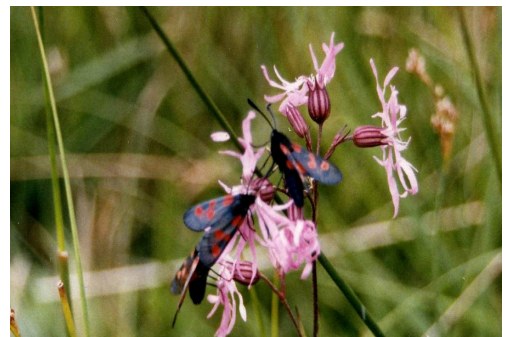
*Barbarea vulgaris*



Ragged Robin and  
Buttercups



Burnet Moths  
Feeding on  
Ragged Robin





## Buddleia



This Buddleia has in previous years been the resting and feeding place for numerous butterflies. The wet summers that we have experienced has decimated the butterflies.



## Gelder Rose (Viburnum opulus)





Japanese Knotweed



Deadnettle





Meadow Sweet



Lords and Ladies





White Clover



Red & white Clover



Creeping Thistles





Purple Loosestrife



Cuckoo Flower  
Lady's Smock



Red campion





Yarrow



Bindweed



Great Willowherb



Bird's-foot Trefoil





Plantain



Field Scabius



**Plantain and Field Scabius are two plants necessary for the welfare of Marsh Frattillery Butterfly**

*Spear Thistle*



*Greater Chickweed*





*Silver Weed*



*Wild Celery*



*Himalayan Balson*





??????????



*Silver Leaf*



*Great Willowherb*



*Cow wheat*





*Water Mint*



Ragwort



*Water Figwort*

