



MICHAEL'S

COMMERCIAL CLEANING EQUIPMENT

michaelsequipment.ca



May 2009

Index

Cannister Vacuums	Pages	3 - 7
Hepa Vacuums	Pages	8 - 9
Upright Vacuums	Pages	10 - 11
Mini Scrubbers	Page	12
Automatic Scrubbers	Pages	13 - 14
Floor Machines/Burnishers	Page	15
Carpet Extractors	Pages	16 - 17
Stone Care	Pages	18 - 19
Specialty Equipment	Page	20
Air Movers	Page	21
Vacuum Tools & Accessories	Pages	22 - 27
Pad Drivers	Page	28
Carpet/Shampoo Floor Brushes	Pages	29 - 30
Brush/Pad Combo Drivers	Page	30
Grit Rotary Brushes	Page	31
Clutch Plates	Page	32
Brush/Pad Information	Page	33
Floor Machine Accessories	Page	34
Accessories - Extractors	Pages	35 - 38

Suppliers



PULLMAN-HOLT



MICHAEL'S Canister Vacuums



M50 Plus

PROCARE M50 *Plus* Dry Canister Vacuum

This dry use vacuum picks up where others left off. Manufactured to our exacting specifications, it sets a new standard of quality, durability and value. Ideal for use in any commercial and industrial building application. Power Cord is 15 m.

See Tool Kit, Page 26

For Parts and Optional Accessories See Page 22

Model	Size	Motor	Ship Wt	Standard Accessories
M50 Plus w/o Tools	27 L (7.1 US Gal)	1.3 HP	29 lb	1½" x 8' 6" Hose Assembly
M50K2 Plus w/MTK2 Tool Kit	27 L (7.1 US Gal)	1.3 HP	33 lb	1½" x 8' 6" Hose Assembly



M60 Plus

PROCARE M60 *Plus* Wet/Dry Canister Vacuum

When you compare features, reliability and value, this vacuum is the one which all the other professional wet/dry vacuums will measure themselves by. The non-tipping tank with five casters will provide you years of dependable service. Power Cord is 15 m.

See Tool Kit, Page 26

For Parts and Optional Accessories See Page 22

Model	Size	Motor	Ship Wt	Standard Accessories
M50 Plus w/o Tools	27 L (7.1 US Gal)	1.6 HP	29 lb	1½" x 8' 6" Hose Assembly
M50K3 Plus w/MTK3 Tool Kit	27 L (7.1 US Gal)	1.6 HP	33 lb	1½" x 8' 6" Hose Assembly

PROCARE M80 *Plus* Dry Canister Vacuum

This vacuum is the new, small giant that our Canadian marketplace has been waiting for. Its robust, compact design may well be the most dependable value in the market today. Ideal for use in areas where floor space is limited, but big enough to handle any dry vacuum application. Power Cord is 15 m.

See Tool Kit, Page 26

For Parts and Optional Accessories See Page 22



M80 Plus

Model	Size	Motor	Ship Wt	Standard Accessories
M80 Plus w/o Tools	22 L (5.8 US Gal)	1.3 HP	25 lb	1½" x 8' 6" Hose Assembly
M80K1 Plus w/MTK1 Tool Kit	22 L (5.8 US Gal)	1.3 HP	30 lb	1½" x 8' 6" Hose Assembly
M80K Plus w/MTK Tool Kit	22 L (5.8 US Gal)	1.3 HP	30 lb	1½" x 8' 6" Hose Assembly
M80K2 Plus w/MTK2 Tool Kit	22 L (5.8 US Gal)	1.3 HP	30 lb	1½" x 8' 6" Hose Assembly

MICHAEL'S Canister Vacuums

390CV Dry Canister Vacuum

Powerful, dry only vacuum with exceptional stability. Designed for professional cleaning, this stainless steel canister vacuum has a superior, low profile design that makes it extremely manoeuvrable and easy to use. Comes with on-board tools and power cord storage. Tools: telescopic wand, two-position ergo slide floor tool, dusting tool, upholstery tool and crevice tool.

For Parts and Optional Accessories See Page 22

Model	Size	Motor	Ship Wt	Standard Accessories
B100312 390CV Canister Vac	15 L (4 US Gal)	1.5 HP	18 lb	6' Hose Assembly 5 pc Tool Kit



390CV

Box 101 Dry Canister Vacuum

Economical “dry” vacuum with a lightweight design, swivel casters and convenient carrying handle. Equipped with a flow-thru motor, power nozzle receptacle and polyethylene tank for easy cleaning.

See Tool Kit, Page 25

For Parts and Optional Accessories See Page 22

Model	Size	Motor	Ship Wt	Standard Accessories
Box 101 Canister Vac	9 L (2.4 US Gal)	1.25 HP	24 lb	1¼" x 7' Hose MTK4 Tool Kit



Box 101

315R Wet/Dry Canister Vacuum

Compact, economical and lightweight “wet/dry” vacuum. Round and smooth polyethylene tank for easy maintenance. Comes with a power nozzle receptacle, by-pass motor and built-in bumpers.

See Tool Kit, Page 26

For Parts and Optional Accessories See Page 24

Model	Size	Motor	Ship Wt	Standard Accessories
315R Wet/Dry Canister Vac	23 L (6.1 US Gal)	1.5 HP	30 lb	1½" x 8½' Hose MTK5 Tool Kit



315R

MICHAEL'S Canister Vacuums



315C

315C Wet/Dry Canister Vacuum

Designed for light to moderate jobs. Features a by-pass motor, polyethylene tank, power nozzle receptacle, carrying handle, built-in bumpers and 8.5 m power cable.

See Tool Kit, Page 26

For Parts and Optional Accessories See Page 24

Model	Size	Motor	Ship Wt	Standard Accessories
315C Wet/Dry Canister Vac	43 L (11.4 US Gal)	1.5 HP	34 lb	1½" x 8½' Hose MTK5 Tool Kit



415MC

415MC Wet/Dry Canister Vacuum

Largest "wet/dry" vacuum with a polyethylene tank. Large 8" rear wheels and 3" front swivel casters provide stability and mobility. Drain hose with plug for safe dumping of liquids. Comes with a power nozzle receptacle, by-pass motor, built-in bumpers and 675 sq in of filter surface. **Can also be used with a front-mounted squeegee.**

See Tool Kit, Page 26

For Parts and Optional Accessories See Page 24

Model	Size	Motor	Ship Wt	Standard Accessories
415MC Wet/Dry Canister Vac	90 L (24 US Gal)	1.5 HP	56 lb	1½" x 8½' Hose MTK5 Tool Kit



420RT

420RT Wet/Dry Canister Vacuum

Outstanding value and versatility. Comes complete with two HP by-pass motors, developing 170 CFM and an easily removable polyethylene tank. Large tipping trolley provides balance and stability. Sturdy moulded dolly with built-in bumpers and 675 sq in of filter surface area. **Can also be used with a front-mounted squeegee.**

See Tool Kit, Page 26

For Parts and Optional Accessories See Page 24

Model	Size	Motor	Ship Wt	Standard Accessories
420RT Wet/Dry Canister Vac	71 L (19 US Gal)	Two 1.25 HP	63 lb	1½" x 8½' Hose MTK5 Tool Kit



Front Mount Squeegee

Canister Vacuums



45-10P

45-10P Wet/Dry Canister Vacuum

Provides an unbeatable combination of features, performance and low price. The motor generates enough suction to pick up almost any kind of material, wet or dry. Operates quietly in sound sensitive areas. The Model 45 provides better efficiency than vacuums twice the price. Features a drop-in style cloth filter bag, blow moulded poly canister with 4 casters, a positive locking, full swivel hose connection and 25' power cord.

Tool Kit Description Page 23

For Parts and Optional Accessories See Page 23

Model	Size	Motor	Ship Wt	Standard Accessories
B701963 45-10P Wet/Dry	38 L (10 US Gal)	1.5 HP	33 lb	10' Hose, 6 pc Tool Kit

PROCARE M60-12 *Plus* Wet/Dry Canister Vacuum

High performance, durable, large capacity "wet/dry" vacuum built to the demanding Procure "Plus" specifications. Non-corrosive tank provides years of service. Mounted on 4 swivel casters to maximize manoeuverability.

See Tool Kit, Page 26

For Parts and Optional Accessories See Page 24



M60-12 *Plus*

Model	Size	Motor	Ship Wt	Standard Accessories
M60-12 Plus w/o Tools	62 L (16.4 US Gal)	1.6 HP	48 lb	1½" x 11½' Hose Assembly
M60-12K3 Plus w/MTK3 Tool Kit	62 L (16.4 US Gal)	1.6 HP	53 lb	1½" x 11½' Hose Assembly

PROCARE M60-18TNP *Plus* Wet/Dry Canister Vacuum

Procure M60-18TNP features a large tank and trolley with a tipping system for easy dumping and can also be dumped in the fixed position. Manufactured with 2 front swivel casters and 2 large 8" rear wheels for easy transportation.

See Tool Kit, Page 26

For Parts and Optional Accessories See Page 24



M60-18TNP *Plus*

Model	Size	Motor	Ship Wt	Standard Accessories
M60-18TNP Plus w/o Tools	72 L (19 US Gal)	1.6 HP	64 lb	1½" x 11½' Hose Assembly
M60-18TNP Plus w/MTK3 Tool Kit	72 L (19 US Gal)	1.6 HP	69 lb	1½" x 11½' Hose Assembly

MICHAEL'S Canister Vacuums

NEW

Available
2009



45-20P

45-20P Wet/Dry Canister Vacuum

Equipped with a powerful motor and delivers 105" of waterlift and 110 CFM. Low noise design is perfect for use in hospitals and schools. Features a polyethylene tank, built-in handle and dolly system for superior durability and easy transportation. Includes a 10' hose, two-piece metal wand, floor brush tool, floor squeegee tool, round dusting tool and crevice tool.

For Parts and Optional Accessories See Page 23

Model	Size	Motor	Ship Wt	Optional Accessories
B260865 45-20P Wet/Dry Vacuum	76 L (20 US Gal)	2 HP	48 lb	Front Mount Squeegee Tool



102-12SS

102-12SS Stainless Steel Wet/Dry Canister Vacuum

Recommended for heavy-duty "wet/dry" service. Built tough to pick up almost any kind of debris or liquid. Comes with a stainless steel tank, two filter assemblies and the exclusive "Never Clog" dual filtration system for dry pick-up and a wet pick-up adaptor for recovering liquids. Includes a 10' hose, two-piece metal wand, floor brush tool, floor squeegee tool, round dusting tool and crevice tool.

For Parts and Optional Accessories See Page 23

Model	Size	Motor	Ship Wt	Standard Accessories
B160449 102-12SS	45 L (12 US Gal)	2 HP	58 lb	1½" x 10' Hose 5 pc Tool Kit



102-12P

102-12P Wet/Dry Canister Vacuum

Recommended for heavy-duty "wet/dry" service. Comes with a heavy duty poly tank, two filter assemblies, the exclusive "Never Clog" dual filtration system for dry pick-up and a wet pick-up adaptor for recovering liquids. Includes a 10' hose, two-piece metal wand, floor brush tool, floor squeegee tool, round dusting tool and crevice tool.

For Parts and Optional Accessories See Page 23

Model	Size	Motor	Ship Wt	Standard Accessories
B522289 102-12P	45 L (12 US Gal)	2 HP	58 lb	1½" x 10' Hose 5 pc Tool Kit



102DA

102DA Drum Adapter Wet/Dry Vacuum

Fits 45 Imperial or 55 US gallon steel drums. Automatic water shut-off prevents over-filling. Adapter is powder coated, 22-gauge cold rolled steel. Wide 4" Neoprene rubber gasket provides superior air seal. Comes with 25' power cord, 2-piece metal wand, floor brush tool, floor squeegee tool and round dusting brush.

For Parts and Optional Accessories See Page 23

Model	Size	Motor	Ship Wt	Standard Accessories
B160447 102DA Drum Adapter	45 Imp. or 55 US gal Drum	2 HP	42 lb	1½" x 10' Hose 4 pc Tool Kit

Hepa Vacuums

86ASB54C Hepa Wet/Dry Canister Vacuum

Compact, high-efficiency, wet/dry steel vacuum with a drop-in Hepa filter for full 3-stage filtration. Small and lightweight; can be easily carried or transported. Ideal for maintenance and shop environments for fast pick up of hazardous materials. Includes a 10' hose, two-piece metal wand, floor brush tool, floor squeegee tool, round dusting tool and crevice tool.

For Parts and Optional Accessories See Page 23

Model	Size	Motor	Ship Wt	Standard Accessories
B160420 86ASB54C Wet/Dry Hepa Vacuum	19 L (5 US Gal)	1 HP	49 lb	1½" x 10' Hose Assembly 5 pc Tool Kit

86ASB5D4C Hepa Dry Canister Vacuum

Compact, high-efficiency, dry only steel vacuum with a drop-in Hepa filter for full 3-stage filtration. Small and lightweight; can be easily carried or transported. Ideal for maintenance and shop environments for fast pick up of hazardous materials. Includes a 10' hose, two-piece metal wand, floor brush, dusting brush and crevice tool.

For Parts and Optional Accessories See Page 23

Model	Size	Motor	Ship Wt	Standard Accessories
B160419 86ASB5D4C Dry Hepa Vac	19 L (5 US Gal)	1 HP	38 lb	1½" x 10' Hose Assembly 4 pc Tool Kit

102ASB12P Hepa Wet/Dry Canister Vacuum

Our most popular wet/dry HEPA vacuum for heavy-duty service in professional abatement work. Features a heavy duty polyethylene tank with dump valve, delivers 105" of waterlift and 110 CFM. Four-stage filtration for extra efficiency. Includes a 10' hose, two-piece metal wand, floor brush tool, floor squeegee tool, round dusting tool and crevice tool.

For Parts and Optional Accessories See Page 23

Model	Size	Motor	Ship Wt	Standard Accessories
B160421 102ASB12P Wet/Dry Hepa Vacuum	45 L (11.9 US Gal)	2 HP	84 lb	1½" x 10' Hose Assembly 5 pc Tool Kit

102ASB12PD Hepa Dry Canister Vacuum

Our most popular dry HEPA vacuum for heavy-duty service in professional abatement work. Heavy duty poly tank. Four-stage filtration for extra efficiency. Includes a 10' hose, two-piece metal wand, floor brush, dusting brush and crevice tool.

For Parts and Optional Accessories See Page 23

Model	Size	Motor	Ship Wt	Standard Accessories
B527038 102ASB12PD Dry Hepa Vac	45 L (11.9 US Gal)	2 HP	72 lb	1½" x 10' Hose Assembly 4 pc Tool Kit



Hepa Vacuums



102ASBDA

102ASBDA Hepa Wet/Dry Drum Adapter

Our super heavy-duty drum style Wet/Dry Hepa vacuum sits atop a steel drum. Features an unsurpassed 55 US gallon of wet recovery. Includes a two-piece metal wand, floor brush tool, floor squeegee tool and round dusting brush. Drum not included.

For Parts and Optional Accessories See Page 23

Model	Size	Motor	Ship Wt	Standard Accessories
B160446 102ASBDA Wet/Dry Hepa Drum Vacuum	208 L (55 US Gal)	2 HP	61 lb	1½" x 10' Hose Assembly 4 pc Tool Kit



390ASB

390ASB Hepa Dry Canister Vacuum

A powerful, dry only Hepa vacuum with exceptional stability. Low profile design makes it extremely manoeuvrable and easy to use. Stainless steel tank and telescopic wand. Comes with an independently certified Hepa filter and on-board tools. ETL certification meets UL & CSA standards. Tools: telescopic wand, two-position ergo slide floor tool, dusting tool, upholstery tool and crevice tool.

For Parts and Optional Accessories See Page 22

Model	Size	Motor	Ship Wt	Standard Accessories
B160535 390ASB Dry Hepa Vac	15 L (4 US Gal)	1.5 HP	18 lb	6' Hose Assembly 5 pc Tool Kit



45-10P

45-10P Hepa Dry Canister Vacuum

Equipped with a powerful, 2-stage by-pass motor and an extra large capacity Hepa filter system, the Model 45 offers the air flow efficiency of vacuums costing three times as much. The Model 45 is manufactured to the same high standards as our large Hepa, so it will withstand years of hard use. Includes a metal wand, floor brush, crevice tool and dusting brush.

For Parts and Optional Accessories See Page 23

Model	Size	Motor	Ship Wt	Standard Accessories
B160414 45-10P Hepa Dry Only	38 L (10 US Gal)	1.5 HP	33 lb	10' Hose, 4 pc Tool Kit



45Hepa Wet/Dry

45-10P Hepa Wet/Dry Canister Vacuum

Equipped with a powerful, 2-stage by-pass motor and an extra large capacity Hepa filter system, the Model 45 offers the air flow efficiency of vacuums costing three times as much. The Model 45 is manufactured to the same high standards as our large Hepa, so it will withstand years of hard use. Includes a metal wand, floor brush, crevice tool, dusting brush and squeegee tool.

For Parts and Optional Accessories See Page 23

Model	Size	Motor	Ship Wt	Standard Accessories
B160487 45-10P Hepa Wet/Dry	38 L (10 US Gal)	1.5 HP	43 lb	10' Hose, 5 pc Tool Kit

Upright Vacuums



Dynamic 380E or 450E

Dynamic 380E and 450E Lindhaus Upright Vacuums

High efficiency filtration, quiet two-motor upright vacuum. **It's the lightest professional 2-motor machine ever built and features our patented weight distribution system.** Proven strength and durability. The geared belt transmission system is protected by an electronic overload control. The on-board tool kit consists of a crevice tool, upholstery tool, patented telescopic wand, handle with suction control and a 4-to-1 stretch hose.

For Parts and Optional Accessories See Page 25

Model	Size	Motor	Ship Wt	Standard Accessories
380E Dynamic Upright - 15"	4.5 L (1.2 US Gal)	930 watt	24 lb	3 pc Tool Kit
450E Dynamic Upright - 18"	4.5 L (1.2 US Gal)	930 watt	25 lb	3 pc Tool Kit



RX380

RX450

RX380, RX450 and RX500 RX Hepa Lindhaus Uprights

Superb filtration and advanced construction. Easy handling, quiet, vibration-free machine boasts the industry standard multi-level filtration system. Replacement of the brush roller is easily done from the side with no tools required. The on-board tool kit consists of a crevice tool, swivel dusting brush, patented telescopic wand and a 4-to-1 stretch hose.

For Parts and Optional Accessories See Page 25

Model	Size	Motor	Ship Wt	Standard Accessories
RX380 RX Hepa Upright - 15"	4 L (1 US Gal)	920 watt	25 lb	3 pc Tool Kit
RX450 RX Hepa Upright - 18"	4 L (1 US Gal)	920 watt	26 lb	3 pc Tool Kit
RX500 RX Hepa Upright - 20"	4 L (1 US Gal)	920 watt	26 lb	3 pc Tool Kit

Activa 30E Lindhaus Upright Vacuum

This single motor 12" upright comes standard with the following features, offering versatility and optimum performance: 4-to-1 Stretch Hose, multi-level filtration system, bag full indicator light, foot pedal handle adjustment lever, Chevron-style roller brush and extra bag storage. Vacuum has an automatic shut-off for extended belt-life and a 4 L capacity paper bag.

For Parts and Optional Accessories See Page 25



Activa 30E

Model	Size	Motor	Ship Wt	Standard Accessories
30E Activa Upright - 12"	4 L (1 US Gal)	850 watt	14 lb	Built-in Tool Caddy

MICHAEL'S Upright Vacuums



FB6812, FB6817 and FB6819 Upright Vacuums

A mid-priced line of moderate duty commercial vacuums with hepa filtration. The Fuller Brush professional line has a 1-year warranty. All models come with tools on board.

Model	Size	Motor	Ship Wt	Features
FB6812 Upright Vacuum	1 L	12 amp	18 lb	On-Board Tool Kit, 40' cord, plastic handle and bottom plate
FB6817 Upright Vacuum	1 L	10 amp	18 lb	On-Board Tool Kit, 30' cord, metal handle and bottom plate
FB6819 Upright Vacuum	1 L	10 amp	18 lb	On-Board Tool Kit, 40' cord, metal handle and bottom plate



SC886E, SC888J and SC899E Upright Vacuums

Innovative Sanitaire® uprights feature long-life, commercial grade motors, six-level carpet adjustments and a 50' power cord. Durable machines with a chrome steel brush roll, large wheels and chrome steel hood. Steel brush rolls are replaceable and the Quick Kleen® feature allows easy access to the fan chamber.

Model	Size	Motor	Ship Wt	Features
SC886E 12" Upright	17 L (18 qt)	1 HP	19 lb	Shake-Out Bag
SC888J 12" Upright	1.8 L (1.9 qt)	1 HP	21 lb	Allergen Filtration
SC899E 16" Upright	10 L (11 qt)	1 HP	19 lb	Shake-Out Bag



SV-240P and SV-280P Wide Area Vacuums

Specially suited for vacuuming and power-grooming large carpeted areas. Highly efficient, low profile and easy to operate. Features include a folding handle, a Chevron-patterned power-grooming brush, 1.2 bushel capacity top filling collection system, 18.3 m (60') power cord, toe operated pile-height adjustment lever with five positions, heavy duty cloth outer filter support bag, welded steel frame and wrap-around bumpers.

Model	Size	Motor	Ship Wt	Features
SV-240P Wide Area Vac - 24"	24"	5/8 HP	75 lb	18.3 m Power Cord
SV-280P Wide Area Vac - 28"	28"	5/8 HP	76 lb	18.3 m Power Cord

SV-240P and SV-280P Optional Accessories

332836 Replacement Paper Bags (5 pack)

Mini Scrubbers



Vispa 35B

Vispa 35B All Purpose Scrubber

The smallest, battery-powered automatic floor scrubber on the market. Easy to operate; fill the solution tank, fit the brush, lower the squeegee and start operating. Battery-powered and therefore, cable-free. A true all purpose scrubber, the Vispa 35B can move easily around tables, clean room corners accurately and have access in areas with many obstacles thanks to its handlebar, which ensures 180° of flexibility. It comes with a gel battery, brush and built-in battery charger.

Model	Squeegee Width	Brush Size	Brush Speed	Ship Wt
Vispa 35B All Purpose Scrubber	17"	14"	140 RPM	147 lb

Optional and Replacement Accessories

- 421278 Soft Blue Brush
- 422213 13" Pad Holder Combo
- 422001 Standard 14" Pad Holder
- 421492 Heavy Duty Brush



LW30

LINDHAUS

LW 30 Pro and LW 38 Pro Mini Scrubbers

Lindhaus high tech scrubbers, LW 30 and 38 Pro, delivers all the qualities and performance of large industrial scrubbers without the bulky design, heaviness and difficult manoeuvrability. These machines are perfect for washing hard floor surfaces ranging from the roughest to the most delicate. Low profile base and sleek upright body make them effortless to use with sparkling results. Leaves the floor perfectly dry, allowing you to use the cleaned area immediately. Optional injection/extraction accessory for use on fabrics in cars and other upholstery.

Model	Brush Width	Brush Speed	Ship Wt
LW30 Pro Scrubber	10"	2000 RPM	23 lb
LW38 Pro Scrubber	13"	2000 RPM	25 lb



B100329

B100326

B100328

B100327

Mini Gloss Boss Floor Machine

Scrubs, cleans and polishes tile, wood, stone, marble, concrete and a wide variety of other hard floors. Removes stubborn spots and stains from carpets. Combine Gloss Boss with any household cleaning spray for professional results. First machine in its class to use microfibre cleaning technology. Lightweight and rugged; constructed of an ABS motor housing and steel handle. Includes twin scrubbing brushes, microfibre pads, carpet bonnets and four felt pads. ETL Certified.

Model	Brush Width	Brush Speed	Ship Wt
B100393 Mini Gloss Boss	2 - 5"	470 RPM	10 lb

Replacement Accessories

- B100326 Carpet Bonnets (2)
- B100327 Felt Pads (2)
- B100328 Microfibre Pads (2)
- B100329 Nylon Brush (2)

NEW

Automatic Scrubbers

Simpla Battery Powered Automatic Scrubbers

Advanced engineering and design. Compact, unique and user-friendly machine with larger capacity and extended run time. Simplas are available with either a single disc brush scrubbing head or innovative, dual cylindrical brushes for scrubbing/sweeping applications. The gearshift control is ergonomically fitted on the handle. Front mounted drain plug is positioned at the optimal height for easy emptying. Lightweight hinged recovery tank can be lifted for maintenance and ventilation during battery charging. The curved squeegee will literally follow any turn and comes with a quick coupler to protect it from impact. Single disc model is equipped with a hands-free electrical brush coupling system. Cylindrical models feature a pre-sweep option for capturing debris, depositing it in a removable hopper.



Simpla 50B

Model & Description	Capacity	Ship Wt
Simpla 50B - 20" Single Disc Brush, Brush Assist Drive Includes: Pad Drivers	13 Gal	189 lb
Simpla 50BST - 20" Dual Cylindrical Brush, Self-Propelled Includes: Dual Cylindrical Poly Brush	13 Gal	205 lb



Simpla 50BST

Optional and Replacement Accessories

Simpla 50B	Simpla 50BST
31-225-DC Wet Battery - 12V, 130ah x 2	31-225-DC Wet Battery - 12V, 130ah x 2
CBN1-M Charger - 24V-12amp (for 31-255-DC)	CBN1-M Charger - 24V-12amp (for 31-255-DC)
8G31DT Gel Battery - 12V, 98ah	8G31DT Gel Battery - 12V, 98ah
CBSW1-SM Charger - 24V-12amp (for 8G31DT)	CBSW1-SM Charger - 24V-12amp (for 8G31DT)
405527 Pad Driver 20"	405639 Cylindrical Front Brush (Polypropylene)
405631 Polypropylene Brush 20"	405640 Cylindrical Rear Brush (Polypropylene)
	405641 Cylindrical Front Brush (Tyrex)

Schematics & Specifications
www.michaelsequipment.ca

Automatic Scrubbers

Abila 52 Battery Powered Automatic Scrubber - 20"

An extremely quiet machine, suitable for use in many facilities including schools, hospitals and retirement homes. Dual contra-rotating brushes have adjustable inclination for better forward movement and can be raised by a foot pedal for machine transfer. The removable, shock resistant, high-density polyethylene recovery tank makes for safe and easy cleaning. Comes with two 10" polypropylene brushes and a 26" squeegee assembly. Batteries, charger and all other brushes are extra.



Abila 52

Model & Description	Capacity	Ship Wt
Abila 52 - 20" Dual Disc Brush, Brush Assist Drive Includes: Two 10" Polypropylene Brushes and a 26" Squeegee Assembly	9 Gal	158 lb

Optional and Replacement Accessories

31-225-DC	Wet Battery 12V, 130ah x 2
CBN1-M	Charger - 24V-12amp (for 31-255-DC)
8G31DT	Gel Battery, 12V, 98ah
CBSW1-SM	Charger - 24V-12amp (for 8G31DT)
405513	Pad Drive 10"
405604	Polypropylene Brush 10"
405603	Tynex Brush 10"

Media Battery Powered Automatic Scrubbers

For cleaning and maintenance of medium to large areas. Reliable, user-friendly and low cost operation. Quiet and highly manoeuvrable; one pass is all you need to scrub and dry any type of surface. Self-propelled with variable speed in both forward and reverse. Features an insulated vac motor that decreases noise (68 db), powerful independent brush and drive motors, metal brush housing and an automatic shut-off on solution and brush control when machine is in neutral. Fill the large capacity solution tank through the self-closing inlet. Stainless Steel "V" squeegee assembly hugs floors, maximizing surface drying even in tight turns. Access to the battery and electrical compartment is gained by a gas lift and the balanced position of the rotationally moulded recovery tank.



Media 26B

Model & Description	Capacity	Ship Wt
Media 26B Plus - 26" Dual Disc, Self-Propelled Includes: 2 Pad Drivers and a 35" Squeegee Assembly	22 Gal	414 lb
Media 32B Plus - 32" Dual Disc, Self-Propelled Includes: 2 Pad Drivers and a 44" Squeegee Assembly	22 Gal	431 lb

Optional and Replacement Accessories

Media 26 Plus	Media 32 Plus
PS2200 Wet Battery - 6V, 225ah x 4	PS2200 Wet Battery - 6V, 225ah x 4
CBN2-M Charger - 24V-25amp (for PS220)	CBN2-M Charger - 24V-25amp (for PS220)
8GGC2 Gel Battery - 6V, 200ah x 4	8GGC2 Gel Battery - 6V, 200ah x 4
CBSW2-S-M Charger - 24V-20amp (for 8GGC2)	CBSW2-S-M Charger - 24V-20amp (for 8GGC2)
405591 Poly Brush 13"	405563 Poly Brush 16"
405521 Pad Driver 13"	405507 Pad Driver 16"
405593 Tynex Brush 13"	405565 Tynex Brush 16"

Floor Machines/Burnishers



Spectra "Plus" Dual Speed Floor Machine

Designed to stand up to the toughest environments. The bases are manufactured using rotationally moulded polyethylene, which will not rust, chip or crack. The low profile design increases front visibility and allows for usage around furniture and in tight applications. A sturdy cam lock handle adjustment makes positioning the handle at the correct height easy for any operator. Features an hour meter that allows the operator to monitor usage and perform maintenance when needed. Other features include a 50', 14-3 power cord, a 1.5 HP DC rectified motor and a triple planetary, precision-cut steel gear box. Pad driver and brushes sold separately.

Model	Size	Motor	Ship Wt	Drive Disc
NU17FLDS Spectra "Plus" 175/300 RPM	17"	1.5 HP	87 lb	Extra - See Page 34
NU20FLDS Spectra "Plus" 175/300 RPM	20"	1.5 HP	90 lb	Extra - See Page 34



Pullman-Holt Dual Speed Floor Machine

Designed for professional floor care maintenance including stripping, scrubbing, spray buffing, polishing, sanding and grinding on hard floor surfaces, along with shampooing and bonnet cleaning of carpeted floors. Equipped with cool-running large frame, 1.5 horsepower motor, with all steel planetary gearboxes. Operates at two speeds; 190 rpm for scrubbing and stripping and 320 rpm for spray buffing and polishing. Does the job of two machines. Pad driver and brushes sold separately. Optional handle water tank also available.

Model	Size	Motor	Ship Wt	Drive Disc
DS20FCSA Floor Machine 190/320 RPM	20"	1.5 HP	112 lb	Extra - See Page 34



B-Line Single Speed Floor Machine

Built for the professional, Pullman-Holt Floor Machines include heavyweight, powder-coated aluminum chassis, all planetary gearboxes and large frame, high-torque motors. Optional handle water tank also available. Drive disc and brushes sold separately.

Model	Size	Motor	Ship Wt	Drive Disc
B100398 B16F Floor Machine 175 RPM	16"	1.5 HP	97 lb	Extra - See Page 34
B100399 B18F Floor Machine 175 RPM	18"	1.5 HP	99 lb	Extra - See Page 34
B100219 B20F Floor Machine 175 RPM	20"	1.5 HP	100 lb	Extra - See Page 34



GB1500X Floor Burnisher

Features semi-pneumatic 6" non-marking rubber wheels with permanently lubricated ball bearings and welded axles that maintain alignment and precision balance. Free-floating burnisher head adapts to uneven floors. Heavy-duty, slow release 15 AMP circuit breaker protects against overload. Comes with thumb operated safety latch and 50' power cord.

Model	Size	Motor	Ship Wt	Drive Disc
B100285 GB1500X Floor Machine 1500 RPM	20"	1.5 HP	117 lb	Included
B100223 GB2000DC Floor Machine 2000 RPM	20"	1.5 HP	102 lb	Included

MICHAEL'S Carpet Extractors



Premier 60

Premier 60

Mid-size extractor. Recovery tank has a dump valve located on the back of the machine for quick dumping.

Model	Size	PSI	Motor	Ship Wt	Standard Accessories
PR60 Extractor	22 L (5.8 US Gal)	100 psi	2 HP	75 lb	20' x 1½" Vacuum & Solution Hose Assembly

Optional Accessories

- 70700 3½" Economy Detailing Tool - 400 psi
- 70800 Metal Crevice Tool - 400 psi
- 80100 12" Deluxe Stainless Steel Scrub Wand, single bend, 1 spray jet - 400 psi



Premier 100

Premier 100

Includes a 42 L (11 US Gallon) solution tank and a quick-access motor compartment. Drains easily into a 20 L pail, toilet bowl or basin. Comes standard with two 1.25 HP by-pass vacuum motors and a 100 psi pump. Also includes a 25' x 1½" crush-proof vacuum and solution hose assembly. Entela Approved. Comes with 9/16" (B) quick disconnects. Vacuum and solution hose hanger included.

Model	Size	PSI	Motor	Ship Wt	Standard Accessories
PR100 Extractor	42 L (11 US Gal)	100 psi	two 1.25 HP	105 lb	25' x 1½" Vacuum & Solution Hose Assembly

Optional Accessories

- 80100 12" Deluxe Stainless Steel Scrub Wand, single bend, 1 spray jet - 400 psi
- 80250 12" Professional Stainless Steel Scrub Wand, 2 spray jets
- 80050 10" Economy wand with 1 spray jet
- 80000 12" Stainless Steel Scrub Wand, 4 spray jets
- 0752 4" Hand Tool - lightweight, plastic with 1 spray jet
- 70700 3½" Economy Detailing Tool - 400 psi



Premier 375

Premier 375

Powerful extractor designed to fulfill all the demands of a professional cleaner. It has switches for both by-pass vacuum motors. The flow of solution is easily regulated from the maximum 450 psi to as low as 50 psi. The moulded polyethylene 42 L solution tank features an easy-to-reach handle and quick-access motor compartment. Equipped with 9/16" quick disconnects. Entela Approved. Vacuum and solution hose hanger included.

Model	Size	PSI	Motor	Ship Wt	Standard Accessories
PR375 Extractor	42 L (11 US Gal)	450 psi	two 1.25 HP	110 lb	25' x 1½" Vacuum & High Press. Solution Hose Assembly

Optional Accessories

- 70700 3½" Economy Detailing Tool - 400 psi
- 80250 12" Professional Stainless Steel Scrub Wand, 2 spray jets

MICHAEL'S Carpet Extractors



SC400 or
SC600

SC400 & SC600 Self-Contained Extractors

These self-contained extractors feature a 3-stage, 2 HP motor for maximum waterlift and solution recovery. Brush motor (1400 RPM) agitates dirt and soil for quick removal. Cast aluminum vac shoe with stainless steel guards adjust to carpet surface. Clear solution strainer is easy to remove, clean and replace.

Model	Size	PSI	Motor	Ship Wt	Optional Accessories
SC400 Self-Contained Extractor	27 L (7 US Gal)	100 psi	2 HP	98 lb	See Accessories Pages 35- 37
SC600 Self-Contained Extractor	38 L (10 US Gal)	100 psi	2 HP	160 lb	See Accessories Pages 35- 37



Premier 700

Premier 700 Self-Contained Extractor

Features a lift-off recovery bucket, 26.5 L tank, self-levelling power brush, 50 psi pump, 3-stage by-pass motor and four 7" non-marking wheels for manoeuvrability and stability. Cleaning head is offset to allow cleaning close to walls and corners. Entela Approved.

Model	Size	PSI	Motor	Ship Wt	Optional Accessories
PR700 Self-Contained Extractor	26.5 L (7 US Gal)	50 psi	1.5 HP	110 lb	See Accessories Pages 35- 37

Optional Accessories

80100	12" Deluxe Stainless Steel Scrub Wand, single bend, 1 spray jet - 400 psi
80250	12" Professional Stainless Steel Scrub Wand, 2 spray jets
80050	10" Economy wand with 1 spray jet
80000	12" Stainless Steel Scrub Wand, 4 spray jets
0752	4" Hand Tool - lightweight, plastic with 1 spray jet
70700	3½" Economy Detailing Tool - 400 psi
70800	Metal Crevice Tool - 400 psi
D02359	Adaptor



Premier 300S

Premier 300S Micro Spotter

This seemingly small extractor comes complete with a powerful 2-stage motor, 55 psi pump, 8' vacuum/solution hose, 3" hand tool and 9/16" (B) quick disconnects.

Model	Size	PSI	Motor	Ship Wt	Standard Accessories
PR300S Micro Spotter	5 L (1.3 US Gal)	55 psi	1.5 HP	21 lb	8' Solution Hose & 3" Hand Tool

MICHAEL'S Stone Care



Stone Care Floor Machine with Pad Driver

For professional stone, marble or masonry floor care. Heavy weighted and adjustable from 140 to 230 lb to provide the friction required for many types of stone maintenance and refinishing. A 40 lb "donut" weight is mounted under the chassis to provide a lower centre of gravity and smooth side-to-side grinding with less operator fatigue. Additional weights can be stored safely in the canopy bracket. Optional models based on motor preference and type of liquid dispensing. Optional 10 lb weights (B980456).

Model	Motor	Ship Wt
B100290 B16F-SC-AW Waterfeed System	AC	173 lb
B200755 B16F-SC-AT 4 Gallon Solution Tank	AC	174 lb
B200754 B16F-SC-DW Waterfeed System	DC	158 lb
B200744 B16F-SC-DT 4 Gallon Solution Tank	DC	159 lb

Stone Care Diamonds

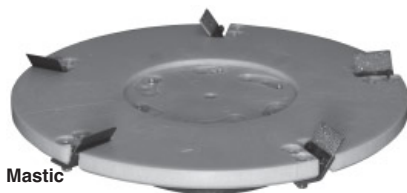
Each diamond disc is coded by refinishing "step" and "colour" to work with our Stone Care floor Machine to help you produce a great finish on your stone floors. Temperature resistant bonding material, coupled with a high concentration of diamonds makes these discs the best performing and longest lasting discs on the market today. Five or six discs are recommended depending on the job and quality of results desired. For use on marble, granite, limestone, travertine and terrazo.



Model	Ship Wt
B200725 Metal 100 grit - For removal of lippage and gouges	1 lb
B200717 Black 50 grit - For removal of moderate scratches	0.08 lb
B200718 Blue 100 grit - For removal of moderate scratches	0.08 lb
B200719 Green 200 grit - For removal of fine scratches	0.08 lb
B200720 Red 400 grit- For removal of fine scratches	0.08 lb
B200722 Yellow 800 grit - For honing	0.08 lb
B200723 Grey 1500 grit - For initial polishing	0.08 lb
B200724 White 3500 grit - For final polishing	0.08 lb

Diamabrush™ Stone, Concrete and Wood

The most effective, easy to use diamond abrasive brushes. Use on all types of flooring including concrete, vinyl composition tile, hardwood, terrazzo and other stone finishes. Use to remove urethane, varnish, black mastic, thin set, glue and epoxy coatings, prepare surfaces, scarify, honing, leveling and polishing. Fits on a number of rotary driven machines including battery or propane powered automatic scrubbers, disc sanders, planetary machines, grinders, buffers and polishers.



Mastic



Poly



Hardwood

Hardwood	Mastic	Concrete CCW	Concrete CW	Polymer (100 grit)
12" - 931201212	15" - 921501202	15" - 901501222	15" - 901501221	15" - 911501220
13" - 931301212	16" - 921601202	16" - 901601222	16" - 901601221	16" - 911601220
14" - 931401212	17" - 921701202	17" - 901701222	17" - 901701221	17" - 911701220
15" - 931501212	18" - 921801202	18" - 901801222	18" - 901801221	18" - 911801220
	19" - 921901202	19" - 901901222	19" - 901901221	19" - 911901220
	20" - 922001202	20" - 902001222	20" - 902001221	20" - 912001220

Polymer (200 grit)	Polymer (400 grit)	Polymer (1000 grit)	Polymer (2000 grit)
15" - 911501230	15" - 911501240	15" - 911501250	15" - 911501260
16" - 911601230	16" - 911601240	16" - 911601250	16" - 911601260
17" - 911701230	17" - 911701240	17" - 911701250	17" - 911701260
18" - 911801230	18" - 911801240	18" - 911801250	18" - 911801260
19" - 911901230	19" - 911901240	19" - 911901250	19" - 911901260
20" - 912001230	20" - 912001240	20" - 912001250	20" - 912001260



MALISH

www.malish.com

S1300 Single-Phase Dust Collectors (120 and 230 V)

Excellent as all-around Hepa dust collector for recovery of almost any kind of dust or debris. A large pleated cartridge and a tested and certified Hepa filter provide superior filter efficiency for a wide variety of pick up applications. Equipped Jet Pulse for effective filter cleaning and disposal into a 3.4 gallon plastic recovery/disposal bag. The stable, easy-to-move dolly makes this a popular choice to work with power hand-held tools and as a rental unit. Complete tool kit includes 16' hose, wand and floor attachment.

Hepa Filter: 9 ft²
Cartridge Filter: 16 ft²

Model	CFM	Motor	amps	Volts	Waterlift	Ship Wt
S1300 Dust Collector	118	1.7 HP	9.6	120	90	73 lb
S1300 Dust Collector	118	1.7 HP	4.4	230	90	73 lb

Replacement Tools and Optional Accessories

1225078	16' x 1½" Hose Assembly
6324034	2 pc Wand 1½"
1326054	1½" x 14½" Floor Nozzle
200700070	Hepa Filter, S-Line
200600788	Polyester Pre-Filter
200600789	Cellulose Filter



S1300



S2800 Single-Phase Dust Collectors (120 and 230 V)

Powerful two-motor dust collector equipped with cartridge style pre-filter and two tested, certified Hepa filters. The S2800, with its Jet Pulse for effective filter cleaning system, deposits its recovered contents into a single, 9.8 gallon plastic bag for dust free disposal. Complete tool kit includes 25' hose, wand and floor attachment.

Tube Filter: 11 ft²
Hepa Filter: 18 ft²
Cartridge Filter: 18 ft²

Model	CFM	Motor	amps	Volts	Waterlift	Ship Wt
S2800 Dust Collector	235	3.4 HP	19.2	120	90	114 lb
S2800 Dust Collector	235	3.4 HP	8.8	230	90	116 lb

Replacement Tools and Optional Accessories

5225001	25' x 2" Hose Assembly
1224035	2 pc Wand 2"
1326087	2" x 14½" Floor Nozzle
200700070	Hepa Filter, S-Line
200600804C	Polyester Pre-Filter
200600804	Cellulose Filter



S2800



MICHAEL'S Specialty Equipment



MagnetSpray

MagnetSpray

The **MagnetSpray** system is simple and safe to use. It provides a much more effective application of chemicals to virtually any type of surface. Results are at least five times better than conventional sprayers, and best of all, **MagnetSpray** saves thousands of dollars in reduced chemical and labor costs.

Perfect for a wide variety of surfaces and applications, including new construction & wood, sealants & coatings, smoke cleanup & odor control, mold and biohazard remediation sanitizers, disinfectants and cleaners.

Model	Size	Ship Wt	Standard Accessories
B230274 MagnetSpray	3 US Gal	107 lb	50' Hose and Wand Assembly



MagnetSpray Deluxe

MagnetSpray Deluxe

Offers the original unit as above, along with an additional 100' hose and a back pack tank for increased mobility.

Model	Size	Ship Wt	Standard Accessories
B100323 MagnetSpray Deluxe	3 US Gal	40 lb	100' Hose



P5

P5 PorterVac Back-Pak Vacuum

Lightweight (10 lb), portable vacuum with quiet, 65 decibel operation. Ideal for commercial buildings, schools and healthcare facilities. Includes a 1.7 HP Ametek motor with thermal protection for powerful suction. The four-stage filtration system ensures clean air exhaust. Rugged, rotational moulded construction will withstand years of hard use. Includes a double-bend wand, floor brush, carpet tool, crevice tool and dusting brush.

For Parts and Optional Accessories See Page 23

Model	Size	Motor	Ship Wt	Standard Accessories
B160530 P5 PorterVac	6 qt	1.7 HP	27 lb	6' Hose, 5 pc Tool Kit



P7

P7 PorterVac Back-Pak Vacuum

Most advanced backpack vacuum offered in the market today. Sleek, tapered vacuum allows for superior airflow while providing excellent mobility. The snap-on top is reversible, to allow hose to be moved to either side for right or left handed operation. Weighing only 10 lb and equipped with the most comfortable backrest in the industry, the P7 significantly increases productivity in multi-task cleaning operations such as hotels, schools, airports, office buildings and hospitals. Features a 4-stage filtration system with sealed-air hepa filter for superior, clean air exhaust. Includes hose, dusting brush, double-bend wand, rug tool, upholstery tool and crevice tool.

For Parts and Optional Accessories See Page 23

Model	Size	Motor	Ship Wt	Standard Accessories
B200642 P7 PorterVac	8 qt	1.9 HP	23 lb	6' Hose, 5 pc Tool Kit

MICHAEL'S Air Movers



NEW

2200 Mytee-Dry™ Air Mover

Reduce drying time and increase efficiency with this powerful, adjustable air mover. Unique features allow you to control airflow for all sorts of jobs, including drying surfaces, delicate carpets or upholstery.

Model	Capacity	CFM	AMP Draw	Motor	Ship Wt
2200 Mytee-Dry™ Air Mover	3-Speed	2200	4	1/3 HP	30 lb



NEW

3000 Tradewind™ Air Mover

Designed for both water damage restoration and carpet drying, this blower features 3000 CFM while drawing only 2 amps on high speed. Stacks for convenient transport and storage. Includes Daisy Chain units with on-board GFI outlet.

Model	Capacity	CFM	AMP Draw	Motor	Ship Wt
3000 Tradewind™ Air Mover	2-Speed	3000	2	1/4 HP	30 lb



PR2500

Heavy duty blower, ideal for use anywhere large volumes of air have to be moved. Use the 2500 to speed drying times of carpets or floors, thereby improving safety and increasing productivity. Compact and nestable for easy transport. Includes a 3-position mount that allows the operator to direct air flow, a moulded cord wrap for the power cable and a 3-speed rotary switch.

Model	Capacity	CFM	Motor	Ship Wt
PR2500 Blower Fan	3-Speed	1500 - 3000	1/2 HP Continuous	40 lb

NEW



A400 Hepa Air Scrubber

A lightweight, powerful, two-speed portable air scrubber. Provides up to 353 CFM in a unique, ultra portable, easy carry design. A collar attachment is included for flexible hose ducting. An indicator light warns the operator when the washable pre-filter is clogged, for servicing and maintaining airflow.

Model	Volts	CFM	Hepa filter (ft ²)	Ship Wt
200600643D Air Scrubber	120	353	56"	31 lb



A1000 Hepa Air Scrubber

A lightweight, powerful, two-speed portable air scrubber. Provides up to 1000 CFM in a unique, ultra portable design. With its slim cabinet design and built-in noise suppression, this incredibly mobile unit is practically invisible on the job. A collar attachment is included for flexible hose ducting. An indicator light warns the operator when the washable pre-filter is clogged, for servicing and maintaining airflow.

Model	Volts	CFM	Hepa filter (ft ²)	Ship Wt
200600648D Air Scrubber	120	1000	140"	64 lb

NEW

Vacuum Tool & Accessories

Vacuum Cleaner Tools & Accessories

Box 101

0618	Carpet Tool, Floor and Rug Tool
0617	Crevice Tool
0004	Dusting Brush (use with 29003)
6158	Elbow
PH175B	Power Nozzle
0616	Upholstery Tool (use with 29003)
6240	Wand - 2 pc (2 Required)
0147P	Disposable Paper Bags (10/pk)
0612	Hose Assembly
MTK4	Tool Kit
0123	Ring
0124	Dry Filter (Top Hat Style)
0312	Corlon Filter
2862	Dry Filter (Cone Style)

390CV

B230328	Ergo Slide Floor Tool
B160539	Crevice Tool
B160541	Dusting Brush (use with 29003)
B100309	Air Driven Nozzle
B160666	Dry Vac Tool Kit
B160540	Upholstery Tool
B160542	Telescopic Wand
B600900	Disposable Paper Bags (5/pk)
B160543	Hose Assembly

390ASB

B230328	Ergo Slide Floor Tool
B160539	Crevice Tool
B160541	Dusting Brush (use with 29003)
B100309	Air Driven Nozzle
B160666	Dry Vac Tool Kit
B160540	Upholstery Tool
B160542	Telescopic Wand
B600900	Disposable Paper Bags (5/pk)
B160543	Hose Assembly
B160534	Hepa Filter Assembly

M50 Plus

TN-210	Auto Detail Claw Tool
28722	Carpet Tool "Float-a-Matic"
28806	Crevice Tool
28832	Crevice Tool 28" Metal
28831	Crevice Tool 12" Metal
28999	Dusting Brush (use with 29003)
29003	Elbow
28969	Extension Tube
28823	Floor Brush
28839	Gulper Tool Metal
28729	Multi Purpose Dial-the-Job Tool
PH175A	Power Nozzle
MTK2	Dry Vac Tool Kit
28998	Upholstery Tool (use with 29003)
28801	Wand - 1 pc
100029	Wand - 2 pc
M2741P	Disposable Paper Bag
6150	Hose Assembly
2852	Cartridge Filter
2881	Hepa "Type" Filter
0312	Corlon Filter
2855	Ring Holder
2822	Short Float Housing
0771	Filter Cone
0123	Ring
2677	Metal Cage

M60 Plus

TN-210	Auto Detail Claw Tool
28722	Carpet Tool "Float-a-Matic"
28806	Crevice Tool
28832	Crevice Tool 28" Metal
28831	Crevice Tool 12" Metal
28999	Dusting Brush (use with 29003)
29003	Elbow
28969	Extension Tube
28823	Floor Brush
28839	Gulper Tool Metal
28729	Multi Purpose Dial-the-Job Tool
PH175A	Power Nozzle
28826	Plastic Squeegee
MTK2	Dry Vac Tool Kit
MTK3	Tool Kit (Wet and Dry)
28998	Upholstery Tool (use with 29003)
28801	Wand - 1 pc
100029	Wand - 2 pc
M2741P	Disposable Paper Bag
6150	Hose Assembly
2852	Cartridge Filter
2881	Hepa "Type" Filter
0312	Corlon Filter
2855	Ring Holder
2822	Short Float Housing
0771	Filter Cone
0123	Ring
2859	Cage

M80 Plus

28906	Carpet Tool, Floor and Rug
28721	Carpet Tool "Float-a-Matic"
28997	Crevice Tool
28999	Dusting Brush (use with 29003)
28908	Elbow
28732	Multi Purpose Dial-the-Job Tool
PH175B	Power Nozzle
MTK	Dry Vac Tool Kit
MTK1	Dry Vac Tool Kit
28998	Upholstery Tool (use with 29003)
28780	Wand - 1 pc
28907	Wand - 2 pc (2 Required)
M2741P	Disposable Bags
6125	Hose Assembly
0312	Corlon Filter
0771	Filter Cone
0123	Ring
2677	Metal Cage

****All parts & accessories for the old style Procure vacuums are available. Call our order desk.****



Vacuum Tool & Accessories

45-10P

B160566 Carpet Tool "Float-a-Matic"
B701615 Crevice Tool
28832 Crevice Tool 28" Metal
28831 Crevice Tool 12" Metal
B000394 Dusting Brush
28969 Extension Tube
B527095 Floor Brush
B703329 Gulper Tool Hand
B527094 Squeegee
B160424 Dry Vac Tool Kit
B160327 Tool Kit (Wet and Dry)
B521007 Wand - 2 pc
B700408 Disposable Paper Bags
B702361 Hose Assembly

45-20P

B524253 Paper Filter Bags
B260866 Front Mount Squeegee Tool
B160327 Tool Kit
B521007 Wand - 2 pc
B702361 10' Hose
B527095 14" Floor Brush Tool
B527094 Floor Squeegee Tool
B701615 17" Crevice Tool
B000394 3" Round Dusting Brush

102-12SS

B160426 Tool Kit
B524253 Paper Filter Bags
B912494 Drop In Filter Assembly
B000407 Dacron Filter Bag
B000402 Moleskin Filter Bag
B000404 Air Seal Gasket
B260200 Wet Pick Up Adaptor
B521007 Metal Wand - 2 pc
B527095 Floor Brush Tool
B527094 Floor Squeegee Tool
B000394 Round Dusting Brush
B701615 Crevice Tool
B000311 10' Hose Assembly

102-12P

B160426 Tool Kit
B524253 Paper Filter Bags
B912494 Drop In Filter Assembly
B000407 Dacron Filter Bag
B000402 Moleskin Filter Bag
B000404 Air Seal Gasket
B260200 Wet Pick Up Adaptor
B521007 Wand - 2 pc
B527095 Floor Brush
B527094 Floor Squeegee
B000394 Dusting Brush
B701615 Crevice Tool
B000311 10' Hose Assembly

102DA & 102ASBDA

B912494 Drop In Filter Assembly
B000407 Dacron Filter Bag
B000402 Moleskin Filter Bag
B000404 Air Seal Gasket
B260200 Wet Pick Up Adaptor
B160426 Tool Kit
B160009 Hepa Filter
B521007 Wand - 2 pc
B527095 Floor Brush
B527094 Floor Squeegee
B000394 Round Dusting Brush
B701615 Crevice Tool
B000311 10' Hose Assembly

102ASB12P

B701614 Auto Detail Claw Tool
B160566 Carpet Tool "Float-a-Matic"
28832 Crevice Tool 28" Metal
28831 Crevice Tool 12" Metal
B000394 Dusting Brush (use with 29003)
28969 Extension Tube
B527095 Floor Brush
B703329 Gulper Tool Hand
B527094 Squeegee
B160426 Tool Kit (Wet and Dry)
B521007 Wand - 2 pc
B524253 Disposable Paper Bags
B000311 Hose Assembly
B160009 Hepa Filter Assembly
B700017 Pre-Filter
B520788 Wet Conversion Kit
B700306 Spacer Sleeve

102ASB12PD

B701614 Auto Detail Claw Tool
B160566 Carpet Tool "Float-a-Matic"
28832 Crevice Tool 28" Metal
28831 Crevice Tool 12" Metal
B000394 Dusting Brush (use with 29003)
28969 Extension Tube
B527095 Floor Brush
B703329 Gulper Tool Hand
B527094 Squeegee
B160426 Tool Kit (Wet and Dry)
B521007 Wand - 2 pc
B524253 Disposable Paper Bags
B000311 Hose Assembly
B160009 Hepa Filter Assembly
B700017 Pre-Filter
B520788 Wet Conversion Kit
B700306 Spacer Sleeve
B000517 Dacron Filter

86ASB54C & 86ASB5D4C

B701614 Auto Detail Claw Tool
B160566 Carpet Tool "Float-a-Matic"
28832 Crevice Tool 28" Metal
28831 Crevice Tool 12" Metal
B000394 Dusting Brush (use with 29003)
28969 Extension Tube
B527095 Floor Brush
B703329 Gulper Tool Hand
B527094 Squeegee
B160426 Tool Kit (Wet and Dry)
B521007 Wand - 2 pc
B700408 Disposable Paper Bags
B000311 Hose Assembly
B526520 Hepa Filter Assembly
B527302 Pre-Filter
B700344 Spacer Sleeve
B000517 Dacron Filter

45-10P Hepa Dry & Wet/Dry

B160566 Carpet Tool "Float-a-Matic"
B701615 Crevice Tool
28832 Crevice Tool 28" Metal
28831 Crevice Tool 12" Metal
B000394 Dusting Brush (use with 29003)
28969 Extension Tube
B527095 Floor Brush
B703329 Gulper Tool Hand
B527094 Squeegee
B160424 Dry Vac Tool Kit
B160327 Tool Kit (Wet and Dry)
B521007 Wand - 2 pc
B700408 Disposable Paper Bags
B702361 Hose Assembly
B701904 Tool Kit
B260619 Hepa Filter
B000517 Dacron Filter

Vacuum Tool & Accessories

P5

B521007 Wand - 2 pc
B704130 Disposable Paper Bag (10/pk)
B704131 Cloth Filter
B704133 Foam Exhaust
B600901 Hose Assembly
B600903 Motor Inlet Filter
B160566 Floor & Rug Tool
B701615 Crevice Tool
B000394 Dusting Brush
B701613 Upholstery Tool

P7

B200647 Disposable Cloth Filter Bag
B200648 Disposable Paper Filter Bag
B200651 Primary Cloth Filter Bag
B200653 Exhaust Filter
B200652 Hepa Media Cartridge
B160566 Floor & Rug Tool
B701615 Crevice Tool
B000394 Dusting Brush
B200670 Replacement Hose
B521007 Wand - 2 pc
B701613 Upholstery Tool

315R

6386 Carpet Tool, Floor and Rug
0003 Crevice Tool
6295 Dusting Brush (use with 29003)
6389 Elbow
6384 Floor Brush
PH175A Power Nozzle
6388 Reducer/Adapter
6385 Squeegee
6387 Wand - 2 pc
M2741P Disposable Paper Bags
0008 Hose Assembly
2852 Cartridge Filter
0312 Pre-Filter
2881 Hepa "Type" Filter
MTK5 Tool Kit
0123 Ring
2860 Dry Filter (Cone Style)
2859 Cage
0317W Wet Filter Assembly
2855 Ring Holder
2822 Short Float Housing

M60-12 Plus

TN-210 Auto Detail Claw Tool
28722 Carpet Tool "Float-a-Matic"
28806 Crevice Tool
28832 Crevice Tool 28" Metal
28831 Crevice Tool 12" Metal
28999 Dusting Brush (use with 29003)
29003 Elbow
28969 Extension Tube
28823 Floor Brush
28839 Gulper Tool Metal
28729 Multi Purpose Dial-the-Job Tool
PH175A Power Nozzle
28826 Squeegee
MTK2 Dry Vac Tool Kit
MTK3 Tool Kit (Wet and Dry)
28998 Upholstery Tool (use with 29003)
28801 Wand - 1 pc
100029 Wand - 2 pc
2875 Disposable Paper Bag
6155 Hose Assembly
2852 Cartridge Filter
20043 Pre-Filter
2995 Hepa "Type" Filter
0042 Front-Mount Squeegee
M2741P Paper Filter Bags
0476 Wet Filter
0474W Wet Filter Assembly
2845 Dry Cone Filter
0473 Ring for Filter
2833 Filter Cage

315C

6386 Carpet Tool, Floor and Rug
0003 Crevice Tool
6295 Dusting Brush (use with 29003)
6389 Elbow
6384 Floor Brush
PH175A Power Nozzle
6388 Reducer/Adapter
6385 Squeegee
6387 Wand - 2 pc
M3979P Disposable Paper Bags (5/pk)
0008 Hose Assembly
2852 Cartridge Filter
0312 Pre-Filter
2881 Hepa "Type" Filter
MTK5 Tool Kit
2859 Cage
0317W Wet Filter Assembly
0123 Ring
2860 Cone Style Dry Cloth

M60-18TNP Plus

TN-210 Auto Detail Claw Tool
28722 Carpet Tool "Float-a-Matic"
28806 Crevice Tool
28832 Crevice Tool 28" Metal
28831 Crevice Tool 12" Metal
28999 Dusting Brush (use with 29003)
29003 Elbow
28969 Extension Tube
28823 Floor Brush
28839 Gulper Tool Metal
28729 Multi Purpose Dial-the-Job Tool
PH175A Power Nozzle
28826 Squeegee
MTK2 Dry Vac Tool Kit
MTK3 Tool Kit (Wet and Dry)
28998 Upholstery Tool (use with 29003)
28801 Wand - 1 pc
100029 Wand - 2 pc
2875 Disposable Paper Bag
6155 Hose Assembly
2852 Cartridge Filter
20043 Pre-Filter
2995 Hepa "Type" Filter
0042 Spacer Sleeve
0476 Wet Filter
0474W Wet Filter Assembly
2845 Dry Cone Filter
0473 Ring for Filter
2833 Filter Cage

415MC & 420RT

6386 Carpet Tool, Floor and Rug
0003 Crevice Tool
6295 Dusting Brush (use with 29003)
6389 Elbow
6384 Floor Brush
PH175A Power Nozzle
6388 Reducer/Adapter
6385 Squeegee
6387 Wand - 2 pc
2875 Disposable Paper Bag
0008 Hose Assembly
2852 Cartridge Filter
20043 Pre-Filter
2995 Hepa "Type" Filter
0042 Front Mounted Squeegee
MTK5 Tool Kit
2833 Cage
0474W Wet Filter Assembly
0473 Filter Ring



Vacuum Tool & Accessories

Dynamic (380E & 450E)

- 030060310 Crevice Tool
- 031460310 Dusting Brush
- 003840300 Uni Tool Body
- 030550300 Telescopic Wand
- 031100019 Disposable Paper Bag A4 (8/pk)
- 086670381 Hose Assembly
- 085470081 Exhaust Filter (Micro)
- 011560000 Scent Pads
- 030650000 Charcoal Carbon Filter
- 030640000 Hepa Filter
- 083540100 Blower Port

RX Series

- 030550300 Crevice Tool
- 031460310 Dusting Brush
- 003840300 Uni Tool Body
- 030550300 Telescopic Wand
- B230334 PH4 Paper Bag (10/pk)
- 086670381 Hose Assembly
- 011560000 Scent Pads
- 081980081 Exhaust Filter (5/pk)
- 030640000 Hepa Filter Grill Assembly
- 030650000 Charcoal Filter Grill Assembly
- 030610019 Paper Bags (10/pk)

Activa

- 030550300 Crevice Tool
- 031460310 Dusting Brush
- 003840300 Uni Tool Body
- 030550300 Telescopic Wand
- 031100019 Disposable Paper Bag (8/pk)
- 086670381 Hose Assembly
- 085470081 Exhaust Filter
- 011560000 Scent Pads

SC886

- 54582-1 Shake-Out Bag
- 53270 Brushroll Assembly Repl.
- 52282-2 Bristles Only Repl. (set of 2)
- 54508-2 Conversion Kit to Dirt Cup
- 53506-8 Conversion Kit to Zipper Bag
- 30563A Replacement Belt
- 011560000 Scent Pads

SC888

- 63213A ST Bag with Arm & Hammer
- 30563A Replacement Belt
- 54555 Brushroll Assembly Repl.
- 52140-1 Bristles Only Replacement
- 011560000 Scent Pads

SC899

- 53273 Brushroll Assembly Repl.
- 52264 Bristles Only Repl. (set of 2)
- 54582-1 Shake-Out Bag
- 54508-2 Conversion Kit to Dirt Cup
- 53506-8 Conversion Kit to Zipper Bag
- 30563A Replacement Belt
- 011560000 Scent Pads

FB6812

- FB4201 Paper Filter
- FB1801 Paper Bags (6/pk)
- 011560000 Scent Pads

FB6817

- FB4206 Paper Filter
- FB1801 Paper Bags (6/pk)
- 011560000 Scent Pads

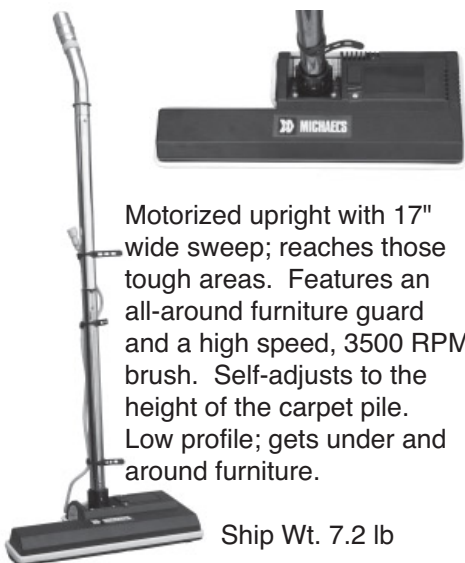
FB6819

- FB4206 Paper Filter
- FB1801 Paper Bags (6/pk)
- 011560000 Scent Pads



Powerheads

PH175



Motorized upright with 17" wide sweep; reaches those tough areas. Features an all-around furniture guard and a high speed, 3500 RPM brush. Self-adjusts to the height of the carpet pile. Low profile; gets under and around furniture.

Ship Wt. 7.2 lb

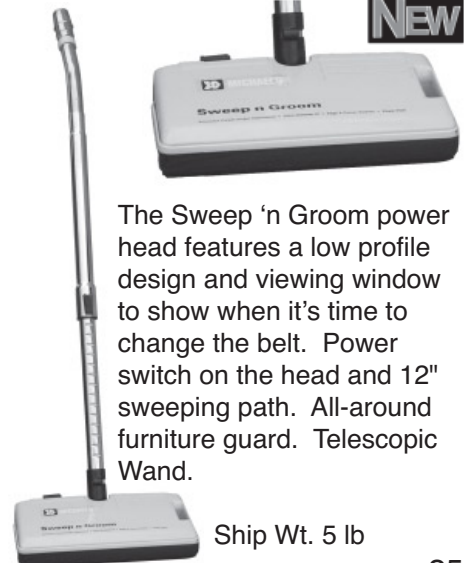
FA6110 Butlers Choice



This 12" wide power head has on/off switch with a headlight for easy viewing. The cogged belt offers greater traction. Features all-around furniture guard. Telescopic Wand.

Ship Wt. 5 lb

EU6106 Sweep 'n Groom



The Sweep 'n Groom power head features a low profile design and viewing window to show when it's time to change the belt. Power switch on the head and 12" sweeping path. All-around furniture guard. Telescopic Wand.

Ship Wt. 5 lb

Vacuum Tool & Accessories

Vacuum Cleaner Tool Kits

MTK 1 1/4" Dry Tool Kit



MTK Tool Kit

- | | |
|---------------------|--------------------------------|
| 28780 Wand | 28721 Float-A-Matic |
| 28997 Crevice Tool | 28998 Upholstery Tool |
| 28999 Dusting Brush | 92624 End Cuff 1 1/2" - 1 1/4" |

MTK1 1 1/4" Dry Tool Kit



MTK1 Tool Kit

- | | |
|-----------------------|----------------------|
| 28907 2-Piece Wand | 28908 Elbow for Wand |
| 28906 Floor/Rug Tool | 28997 Crevice Tool |
| 25998 Upholstery Tool | 28999 Dusting Brush |

MTK2 1 1/2" Dry Tool Kit



MTK2 Tool Kit

- | | |
|---------------------|-------------------------------|
| 28801 Wand | 28722 Float-A-Matic |
| 28997 Crevice Tool | 25998 Upholstery Tool |
| 28999 Dusting Brush | 29003 Adaptor 1 1/2" - 1 1/4" |

MTK3 1 1/2" Wet/Dry Tool Kit



MTK3 Tool Kit

- | | |
|-------------------------------|---------------------|
| 28801 Wand | 28729 Dial-the-Job |
| 28722 Float-A-Matic | 28997 Crevice Tool |
| 25998 Upholstery Tool | 28999 Dusting Brush |
| 29003 Adaptor 1 1/2" - 1 1/4" | |

MTK4 1 1/4" Tool Kit



MTK4 Tool Kit

- | | |
|-----------------------|-------------------|
| 0618 Floor & Rug Tool | 0617 Crevice Tool |
| 0004 Dusting Brush | 6158 Elbow |
| 0616 Upholstery Tool | 6240 Wand |

MTK5 1 1/2 "Tool Kit



MTK5 Tool Kit

- | | |
|------------------------|--------------------|
| 6386 Carpet Tool | 6384 Floor Brush |
| 6385 Squeegee Tool | 6389 Elbow |
| 6388 Adaptor for Tools | 6295 Dusting Brush |
| 0003 Crevice Tool | 6387 Wand |

Vacuum Tool & Accessories



Bulk Hose and End Cuffs				
Size	Length	Colour	Code	Per
1¼"	Custom	Grey	2200	Lin Ft
1¼"	50'	Grey	2200R	Lin Ft
1¼"	End Cuff	Grey	904231	Ea
1½"	Custom	Grey	3025	Lin Ft
1½"	50'	Grey	3025R	Lin Ft
1½"	Custom	Grey Heavy Duty	3050	Lin Ft
1½"	50'	Grey Heavy Duty	3050R	Lin Ft
1½"	End Cuff	Grey	90121	Ea
2"	Custom	Grey	3075	Lin Ft
2"	50'	Grey	3075R	Lin Ft
2"	End Cuff	Grey	91121A	Ea
1¼"-1½"	Reducer Cuff	Grey	50033	Ea



Magnet Bars for Upright Vacuums	
Size	Code
11½"	MC1
16½"	MC6

Vacuum Motors



116311-01



116336-01



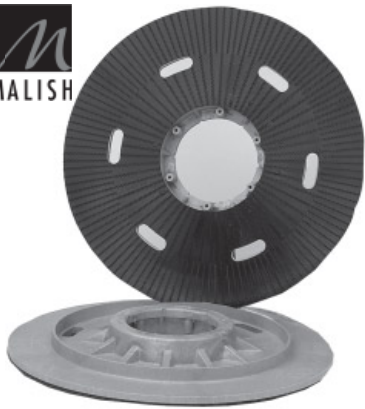
117508-13



MP50392NS

Model	Voltage	Machine(s)	Ship Wt
116311-01 5.7" Diameter two fan stages, thru flow	120	Box 101, Procure M50, Procure M50 Plus, Procure M80, Michael's TV5	5 lb
116336-01 5.7" Diameter two fan stages, bypass	120	Cobex 315, Procure M60, Procure M60 Plus, Michael's TV6	5 lb
MP50392NS 5.7" Base, Two stages with horn, bearing/bearing		Premier Extractors 50, 100, 250 and 375	5 lb
117508-13 7.2" Base, two stages bypass bearing/bearing		MTV2 (new style)	9 lb
050720080 Vac Motor		All HealthCare Pro, RX Evolution and RX Hepa	4 lb
050750080		Activa 30	4 lb
1891S (original)		Box 101	6 lb
1120S (original)		315C, 315R, 415MC & 420RT	6 lb
3888 (original)		M50 Plus and M80 Plus	6 lb
6853 (original)		M6018TNP, M60 Plus and M60-12	6 lb

MICHAEL'S Pad Drivers



Mighty-Lok®

Moulded polymer pad face with hundreds of individual hooks that grip into the threads of a floor pad and hold it securely while operating. The solid block includes a built-in riser and showerfeed holes, allowing use with solution dispensing machines.

All Mighty-Lok® Pad Drivers include the NP9200 Clutch Plate.

Block Dia.	Mighty-Lok® Code
15"	786715
16"	786716
17"	786717
18"	786718
19"	786719
20"	786720
21"	786721
22"	786722

Sure-Lok®



An exclusive design for use on dual and high speed (300 RPM) machines. The face combines the Mighty-Lok® moulded polymer pad gripping material with a foam cushion to absorb vibration and a stiff plastic backing to stabilize the unit. Requires the use of the high speed riser.

Riser and Clutch Plate sold separately.

Block Dia.	Sure-Lok® Code
15"	786755
16"	786756
17"	786757
18"	786758
19"	786759
20"	786760

High Speed Riser



Further smooths operation of the Sure-Lok® system. Works with all Malish standardized 5" centre hole Clutch Plates, including the NP9200 Tru-Fit® Universal Clutch Plate.

Model & Description	Ship Wt
780071 High Speed Riser for Sure-Lok® system	4 lb

Replacement Gripper Face (Peel & Stick)

Code	Description	Code	Description
786811A	Replacement face 11"	786816A	Replacement face 16"
786812A	Replacement face 12"	786817A	Replacement face 17"
786813A	Replacement face 13"	786818A	Replacement face 18"
786814A	Replacement face 14"	786819A	Replacement face 19"
786815A	Replacement face 15"	786820A	Replacement face 20"

Replacement Face with Foam

Code	Description
786915	Replacement face w foam for Sure-Lok 15"
786916	Replacement face w foam for Sure-Lok 16"
786917	Replacement face w foam for Sure-Lok 17"
786918	Replacement face w foam for Sure-Lok 18"
786919	Replacement face w foam for Sure-Lok 19"
786920	Replacement face w foam for Sure-Lok 20"

*Others sizes available upon request. Some Items may be special order

For more information on Pad Drivers, please see the Malish website malish.com

Carpet Shampoo/Floor Brushes

On brushes 14" diameter and larger, the two outer rows are heavier to scrub the carpet and flex the pile, while the softer, inner rows "massage" the dirt from the carpet for a deeper cleaning action.



Nylon Carpet Shampoo Brushes

The best quality brush for this application. Nylon is flexible and supple enough to gently scrub carpets, yet has more "memory" than other fibres for a longer lasting brush.

Polypropylene Carpet Shampoo Brushes

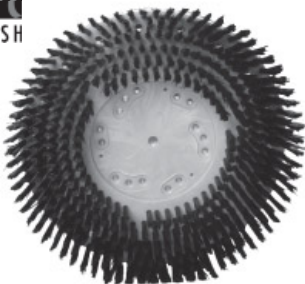
A low cost alternative to nylon for situations that call for less frequent use. Ideal for rental trade. Bristles are slightly stiffer than nylon.



Block Diameter	Type	Nylon		Polypropylene	
		Code	Diameter	Code	Diameter
15"	Plastic	812915	0.025"/0.028"	812415	0.020"/0.025"
16"	Plastic	812916	0.025"/0.028"	812416	0.020"/0.025"
17"	Plastic	812917	0.025"/0.028"	812417	0.020"/0.025"
18"	Plastic	812918	0.025"/0.028"	812418	0.020"/0.025"
19"	Plastic	812919	0.025"/0.028"	812419	0.020"/0.025"
20"	Plastic	812920	0.025"/0.028"	812420	0.020"/0.025"

Tuff-Block® Showerfeed

For cleaning hard surfaces. Nylon and polypropylene scrubbing brushes feature 0.028" diameter fill material throughout the block. Nylon is more flexible and will last the longest, while polypropylene is an economical alternative. Steel wire (0.014" diameter) is the most aggressive of the series, for use on unfinished concrete surfaces.



Block Dia.	Nylon	Polypropylene	Steel Wire	Block Type
15"	772915	772415	773815	Plastic
16"	772916	772416	773816	Plastic
17"	772917	772417	773817	Plastic
18"	772918	772418	773818	Plastic
19"	772919	772419	773819	Plastic
20"	772920	772420	773820	Plastic

WARNING!

Do not use brushes or pads with flammable materials (fuels, solvents, thinner, etc.) or serious bodily harm or injury could result from possible fire or explosion. Any synthetic brush used for carpet shampooing must be broken in properly or carpet damage could result.

*Others sizes available upon request. Some Items may be special order
For more information, please see the Malish website malish.com

Carpet Shampoo/Floor Brushes



SpinSafe™ Carpet Brush

Features a stainless steel glide plate with adjustment screws on top, which minimizes drag, adds life to the motor and protects the integrity of the carpet. This design allows for the use of a larger, 20" floor machine, reducing cleaning time.

Model	Block Dia.	Fill Dia.	Colour
732915 SpinSafe™ for 17" Machine	15"	0.014"	Black
732918 SpinSafe™ for 20" Machine	18"	0.014"	Black

Brush/Pad Combo Drivers



Power-Pad® - Mal-Grit™

Combines the most popular Grit brush with a pad driver for general scrubbing or stripping finishes from hard surfaces. Effectively cleans wide grout lines.

Model	Block Dia.	Grit Colour	Fill Dia.	Grit Size	Pad Size	Pad Colour	Application
785417 Mal-Grit™	17"	Black	0.050"	80	13"	Black	Stripping
785419 Mal-Grit™	19"	Black	0.050"	80	15"	Black	Stripping



Power-Pad® - Clean-Grit™

An excellent general scrubbing brush/pad combination for frequent maintenance cleaning. Flexible enough for cleaning narrow grout lines and uneven surfaces.

Model	Block Dia.	Grit Colour	Fill Dia.	Grit Size	Pad Size	Pad Colour	Application
785617 Clean-Grit™	17"	Blue	0.035"	180	13"	Blue	Scrubbing
785619 Clean-Grit™	19"	Blue	0.035"	180	15"	Blue	Scrubbing



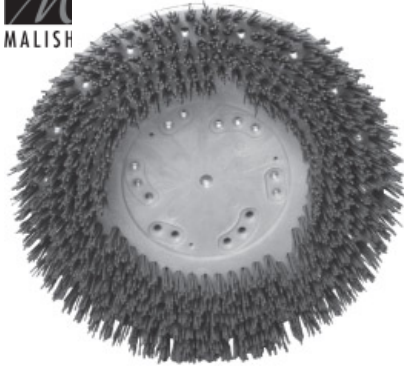
Power-Pad® - Mal-Grit Lite™

A perfect union of durable brush and pad driver with minimum aggression. For daily scrubbing of a variety of tiles, marble, terrazzo and non-slip epoxy finishes.

Model	Block Dia.	Grit Colour	Fill Dia.	Grit Size	Pad Size	Pad Colour	Application
785317 Mal-Grit Lite™	17"	Grey	0.018"	500	13"	Grey	Light Scrubbing
785319 Mal-Grit Lite™	19"	Grey	0.018"	500	15"	Grey	Light Scrubbing

For more information, please see the Malish website malish.com

MICHAEL'S Grit Rotary Brushes

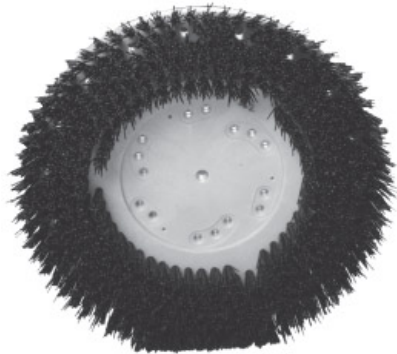


Mal-Grit Xtra™

The most aggressive Grit available. This heavy gauge nylon with larger grit is used for stripping heavily soiled floors such as concrete floors in an industrial setting.

Bristle Colour: Orange
 Bristle Diameter: 0.070"
 Grit Size: 46
 Pad Replacement: High Productivity

Model	Block Dia.	Block Type
813615 Mal-Grit Xtra™	15"	Plastic
813616 Mal-Grit Xtra™	16"	Plastic
813617 Mal-Grit Xtra™	17"	Plastic
813618 Mal-Grit Xtra™	18"	Plastic
813619 Mal-Grit Xtra™	19"	Plastic
813620 Mal-Grit Xtra™	20"	Plastic



Mal-Grit™

The most popular Grit brush. An aggressive brush for general scrubbing or stripping finishes from hard surfaces. Effectively cleans wide grout lines.

Bristle Colour: Black
 Bristle Diameter: 0.050"
 Grit Size: 80
 Pad Replacement: Black or Brown

Model	Block Dia.	Block Type
813215 Mal-Grit™	15"	Plastic
813216 Mal-Grit™	16"	Plastic
813217 Mal-Grit™	17"	Plastic
813218 Mal-Grit™	18"	Plastic
813219 Mal-Grit™	19"	Plastic
813220 Mal-Grit™	20"	Plastic



Clean-Grit™

An excellent general scrubbing brush for frequent maintenance cleaning. Flexible enough for cleaning narrow grout lines and uneven surfaces.

Bristle Colour: Blue
 Bristle Diameter: 0.035"
 Grit Size: 180
 Pad Replacement: Blue or Green

Model	Block Dia.	Block Type
816515 Mal-Grit™	15"	Plastic
816516 Mal-Grit™	16"	Plastic
816517 Mal-Grit™	17"	Plastic
816518 Mal-Grit™	18"	Plastic
816519 Mal-Grit™	19"	Plastic
816520 Mal-Grit™	20"	Plastic



Mal-Grit Lite™

Offers the durability of Grit brushes with minimum aggression. For daily scrubbing of a variety of tiles, marble, terrazzo and non-slip epoxy finishes.

Bristle Colour: Grey
 Bristle Diameter: 0.018"
 Grit Size: 500
 Pad Replacement: Red

Model	Block Dia.	Block Type
813315 Mal-Grit Lite™	15"	Plastic
813316 Mal-Grit Lite™	16"	Plastic
813317 Mal-Grit Lite™	17"	Plastic
813318 Mal-Grit Lite™	18"	Plastic
813319 Mal-Grit Lite™	19"	Plastic
813320 Mal-Grit Lite™	20"	Plastic

*Others sizes available upon request. Some Items may be special order
 For more information, please see the Malish website malish.com

MICHAEL'S Clutch Plates

Center-Lok® Pad Centering Devices

Can be used on left or right rotation machines. Recommended for use on high speed machines.



Model & Description	Thread Handing	Colour
792460 Center-Lok® 3	N/A	Tan
792405 Center-Lok® II	Left	Red
790002 Center-Lok® II Top Only	Left	Red
792710 Center-Lok®	N/A	Orange
792410 Center-Lok® II	Right	Black
790004 Center-Lok® II Top Only	Right	Black
792455 Big-Mouth®	Right	Blue
790054 Big-Mouth® Top Only	Right	Blue
792450 Big-Mouth®	Left	Grey
790052 Big-Mouth® Top Only	Left	Grey

Pad-Lok® Short Trim Pad Driver

Heavy polypropylene strands trimmed offset at ½" are staple set in the Tuff-Block, making this the superior tufted pad driver of choice. Tufts penetrate into the pad for secure holding power. Includes a 1¼" thick plastic riser.



Block Dia.	Pad-Lok® Code
16"	782716
18"	782718

Risers, Clutch Plates and Centre Locks



Code	Description
NP47	Clutch Plate for Advance Machines
NP9200	Clutch Plate, Plastic, Universal for most machines
ZRPLR150	Riser, Plastic - 5" x 1½"
780071	Riser, High Speed for Sure-Lok c/w Clutch Plate
792460	Centre-Lok Pad Holder III

For more information, please see the Malish website malish.com

Brush/Pad Information

How to Break in a Brush

Before using a new brush on carpeting, the brush should be broken in according to the following directions. This will eliminate possible excess drag by “tipping” the strands, removing any possible burrs caused by the manufacturing process.

1. Mount the brush on the floor machine. Follow ALL instructions included in your owners manual.
2. Find a rough textured floor surface, preferably unfinished concrete. Operate the machine on this surface. Run the machine DRY for approximately 15 - 20 minutes. The brush fibres will take a slight set or lean in the direction of the machine rotation.
3. Rinse the brush to remove any dirt caught when running the machine. The brush is now ready to be used on carpeting.

How to Select the Correct Rotary Product

When contacting customer service, please provide the following information to help us assist you in ordering the proper product.

Pad Driver or Brush

If your preference is to have a dedicated product, select a brush. If you have a variety of applications, your choice may be a pad driver. The surface being cleaned and the amount of dirt build up will help determine the selection. The key to remember when ordering these items is the block diameter in relationship to the machine size. A brush is sized 2" smaller than the machine because of the flare of the brush fibres. Pad drivers are specified 1" smaller than the machine.

Machine Make and Model Number

When calling customer service, please have the machine manufacturer and model number to help determine the block size, centre hole diameter and clutch plate necessary to attach the block to the machine. If the machine size is not apparent from the model number, please provide this specification.

Applications	Mal-Grit Xtra	Mal-Grit	Clean-Grit	Mal-Grit Lite	0.028" Nylon	0.025/0.028" Nylon	0.028" Polypropylene	0.020/0.025" Polypropylene	Wire	Baseline	Union Mix	White Tampico	Butcher (Flat) Wire	SP17
Stripping:														
Terrazzo	◇	◇												
Vinyl tile		◇												
Ceramic/Quarry Tile		◇												
Linoleum		◇												
Scarifying Concrete													◇	◇
Concrete Scraping														◇
General Scrubbing:														
Heavily Soiled Concrete	◇	◇	◇		◇		◇		◇	◇			◇	
Moderate to Lightly Soiled Concrete			◇		◇		◇		◇	◇				
Vinyl Tile			◇	◇	◇		◇			◇				
Terrazzo			◇	◇	◇		◇			◇				
Ceramic/Quarry Tile			◇	◇	◇		◇			◇				
Linoleum			◇	◇	◇		◇			◇				
Marble				◇		◇		◇						
“Raised Disc” Rubber Tile				◇		◇		◇						
Non-Slip Epoxy Finish				◇	◇		◇							
Carpet Scrubbing						◇		◇						
Hard Surface Polishing:														
“Raised Disc” Rubber Tile											◇	◇		
Marble											◇	◇		
Linoleum/Vinyl tile											◇	◇		

Floor Machine Accessories



REPLACEMENT AND OPTIONAL ACCESSORIES	Size	Models	Part No.
Mighty-Lok Drive Disc c/w clutch plate	14"	B16F	786714
Mighty-Lok Drive Disc c/w clutch plate	16"	B18F, 17DS, NU17FLDS	786716
Mighty-Lok Drive Disc c/w clutch plate	18"	B20F, 19DS, DS20FCSA	786718
Mighty-Lok Drive Disc c/w clutch plate	19"	NU20FLDS	786719
Gen. Purpose Polypropylene Brush c/w Clutch Plate	14"	B16F	772414
Gen. Purpose Polypropylene Brush c/w Clutch Plate	16"	B18F, 17DS, NU17FLDS	772416
Gen. Purpose Polypropylene Brush c/w Clutch Plate	18"	B20F, 19DS, DS20FCSA	772418
Gen. Purpose Polypropylene Brush c/w Clutch Plate	19"	NU20FLDS	772419
Polypropylene Carpet Brush c/w clutch plate	14"	B16F	812414
Polypropylene Carpet Brush c/w clutch plate	16"	B18F, 17DS, NU17FLDS	812416
Polypropylene Carpet Brush c/w clutch plate	18"	B20F, 19DS, DS20FCSA	812418
Polypropylene Carpet Brush c/w clutch plate	19"	NU20FLDS	812419
Clutch Plate, plastic (universal)		All	NP9200
Handle-mounted Poly Water Tank, 9 L (2.4 US gal)		17DS, 19DS	19201
Handle-mounted Poly Water Tank, 15 L (4 US gal)		All other models listed above	B100094
"Spray Mist" spray buff attachment, 2 L (0.5 US gal)		All models list above	249SB



Controller Splash Back Ring

Fits B-Line series and dual speed floor machines. Also fits any other models up to 22" in diameter. Eliminates baseboard splash during floor stripping and scrubbing jobs. Keeps cleaning solution next to the work surface, saving time and labour. Protects electrical cord from pads or brushes.

Model	Ship Wt
7250R Controller Splash Back Ring	1 lb



Plastic Showerfeed Solution Tank

Heavy-duty x-link poly construction makes these tanks so durable that they can withstand temperatures ranging from -40°F to 200°F without cracking, leaking or becoming brittle. The universal design allows for quick and easy installation on all styles of floor machines. Equipped with an extra wide mouth, allowing easier, spill-free filling and a special, internally mounted valve that virtually eliminates clogging.

Model	Size	Ship Wt
19201 Plastic Showerfeed Solution Tank	4 US Gallon	6 lb



Spray Buff Attachment

Lightweight and portable with rapid pressurization. Designed to mist floor buffing compounds. Easily attaches to most rotary floor machines. Plastic, non-corrosive, 2-quart tank has a hand operated air compressor and a large neck opening for easy filling.

Model	Ship Wt
150631 Spray Buff Attachment	3 lb

Accessories - Extractors

Vacuum and Solution Hose Assemblies



1½" Cuffs and 9/16" Fittings

Code	Description
50010A/50010B	10' Vacuum and Solution Hose Assembly for Premier 50
50011A/50011B	11' Solution Hose Assembly
50015A/50015B	15' Vacuum and Solution Hose Assembly
50015BHP	15' Vacuum and Solution Hose Assembly (High Pressure)
50016A/50016B	16' Solution Hose Assembly
50016BHP	16' Solution Hose Assembly (High Pressure)
50020A/50020B	20' Vacuum and Solution Hose Assembly (100 psi maximum)
50020BHP	20' Vacuum and Solution Hose Assembly (High Pressure)
50021A/50021B	21' Solution Hose Assembly
50021BHP	21' Solution Hose Assembly (High Pressure)
50025A/50025B	25' Vacuum and Solution Hose Assembly
50025BHP	25' Vacuum and Solution Hose Assembly (High Pressure)
50026A/50026B	26' Solution Hose Assembly

0752



Hand Tools

0752 4" Hand Tool
Lightweight plastic, 4" head, with 1 low pressure external jet

70700



70700 Detail Tool
Stainless steel, 3½" plastic with aluminum valve and 1 high pressure external jet

70000 - 4½"
70600 - 3½"



70600 Detail Tool
Stainless steel, 3½" head with aluminum valve and 1 high pressure external jet

70400 Internal
70500 External



70000 Detail Tool
Stainless steel, 4½" head with aluminum valve and 1 high pressure external jet

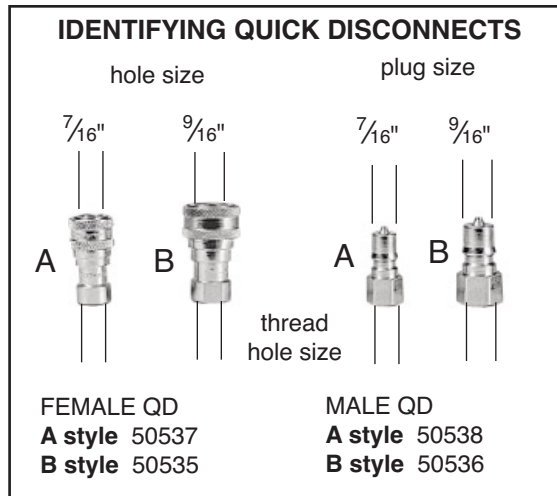
70400 Upholstery Tool
Stainless steel, 4" head with brass valve and 1 low pressure internal jet

70500 Upholstery Tool
Stainless steel, 4" head with brass valve and 1 low pressure external jet

70800



70800 Crevice Tool
Stainless steel and 1 high pressure internal jet



**** When ordering, please specify Style A or B ****

Accessories - Extractors



80050 Economy Extraction Wand

Features a 10" wide, all stainless steel head with a single jet. This single bend wand has stiffened ribs to prevent glides from collapsing. Assist handle not included.

For Premier 50, 100 or 700

Model	Size	PSI	Jet(s)	Ship Wt
80050A Economy Stainless Steel, Single Bend	10"	120 psi	Single	7 lb
80050B Economy Stainless Steel, Single Bend	10"	120 psi	Single	7 lb



80102 Extraction Wand

This cast aluminum head wand has a stainless steel jet bracket that won't break off like on other cast jet bracket wands. The head is highly polished or powder coated. It has stainless steel tube, nuts and bolts; a V120 plastic valve and replaceable stainless steel wand glides.

Model	Size	PSI	Jet(s)	Ship Wt
80102A Stainless Steel, Single Bend	12"	120 psi	Dual	11 lb
80102B Stainless Steel, Single Bend	12"	120 psi	Dual	11 lb
80102BHP Stain. Steel, Single, High Pressure	12"	120 psi	Dual	11 lb



80100 Deluxe Extraction Wand

Single bend wand with 12" wide, all stainless steel head and a single jet. Features overspray control wings and stiffened ribs to prevent glides from collapsing. User-friendly vinyl sleeve protects hands from heat transfer. Assist handle included to help control and prevent user fatigue.

For Premier 50, 100 or 700

Model	Size	PSI	Jet(s)	Ship Wt
80100A Deluxe Stainless Steel, Single Bend	12"	400 psi	Single	12 lb
80100B Deluxe Stainless Steel, Single Bend	12"	400 psi	Single	12 lb



80250 Professional Extraction Wand

All stainless steel 12" wide head with dual jets; no manifold. This double bend wand features overspray control wings and stiffened ribs to prevent glides for collapsing. Vinyl sleeve grip protects hands from heat transfer while the assist handle increases user control and prevents fatigue.

For Premier 100 or 375

Model	Size	PSI	Jet(s)	Ship Wt
80250A Professional Stainless Steel, Dbl Bend	12"	500 psi	Dual	12 lb
80250B Professional Stainless Steel, Dbl Bend	12"	500 psi	Dual	12 lb

Accessories - Extractors



80000 Stainless Steel Scrub Wand with Wheel

This two-bend wand with wheel permits the operator to control the release of the cleaning chemical into the carpet and immediately extract the suspension of dirt and grime.

Model	Size	PSI	Jet(s)	Ship Wt
80000A Stainless Steel Scrub Wand, Dbl Bend	12"	120 psi	Four	19 lb
80000B Stainless Steel Scrub Wand, Dbl Bend	12"	120 psi	Four	19 lb



80900 Stainless Steel Stair Wand

This is the perfect tool for cleaning the carpet in a trailer or motor home, as well as stairs. The 30" long stainless steel mini wand comes with a user-friendly, padded assist handle and vinyl sleeve to prevent heat transfer. Offering a single jet with brass valve, the wand offers value-added versatility. The 1 1/4" wand is expanded at the top to accept standard 1 1/2" hose cuff.

For all Premier Extractors

Model	Size	PSI	Jet(s)	Ship Wt
80900A Stainless Steel Stair Wand	10"	500 psi	Single	6 lb
80900B Stainless Steel Stair Wand	10"	500 psi	Single	6 lb



80950 Stainless Steel Stair Wand with Swivel Head

Features an innovative, ergonomic design allowing you to clean stairs without turning and twisting your arms and wrists. The swivel head, complete with one jet (open sprayw), rotates easily and stays in position. The padded assist handle allows user control while the vinyl sleeve prevents heat transfer to user hands. Perfect height at 30" for cleaning stairs.

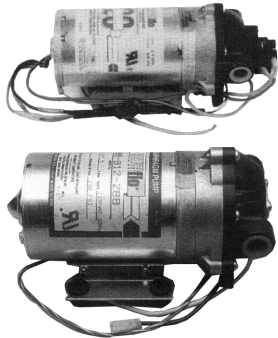
For all Premier Extractors

Model	Size	PSI	Jet(s)	Ship Wt
80950A Stair Wand with Swivel Head	10"	500 psi	Single	5 lb
80950B Stair Wand with Swivel Head	10"	500 psi	Single	5 lb

Replacement Parts - Extractors

Replacement Valves, Kits and Jets

Tool	Valve	Valve Kit	Jet
70400 or 70500 Upholstery Tools	70505	70510	70515
80050 Economy Wand	70305	70310	50736
80102 Wand	70305	70310	50736
80100 Deluxe Wand	70705	70710 or 70711	50721
80250 Professional Wand	70705	70710 or 70711	50746
70800 Crevice Tool	70605	70610	70815
70000 Detailing Tool	70605	70610	70615
70600 Detailing Tool	70605	70610	70635
70700 Detailing Tool	70605	70610	70715
80900 Stair Wand	70705	70710	50736
80950 Stair Wand	70705	70710	50736
80000 Scrub Wand	50710	50712	CC-7447J
0752 Light Duty Hand Tool	0726		2759



Pump Components

Model & Description	Machine(s)	Ship Wt
50055 Shur-Flo Motor and Pump 60 psi	Premier 50, Premier 700	4 lb
50105 Shur-Flo Motor and Pump 100 psi	Premier 60, Premier 700, ST2	6 lb
60375P Pumptec Pump Housing	Premier 375	5 lb



Pump motors and kits are available upon request. Please contact your customer service representative for current pricing and availability.

Please consult your machine service manuals for appropriate part numbers.



MP-70305 Valve

120 psi
Valve Repair Kit 70310



MP-70505 Brass Valve

300 psi
Valve Repair Kit 70510



MP-70605 Aluminum Valve

400 psi
Valve Repair Kit 70610

MICHAEL'S EQUIPMENT LTD. WARRANTY POLICY

Michael's Equipment Ltd. warrants equipment to be free from defects in material and workmanship for the stipulated time period from date of delivery to the original user. In the unlikely event that you experience a faulty product or defective part Michael's Equipment is pleased to offer the following policy, subject to the provisions hereinafter set forth. Parts which become defective in normal use during this period due to faulty workmanship or materials will be repaired or exchanged free of charge when returned to an authorized Michael's Equipment service facility. Please obtain written **return** authorization and complete the warranty claim form prior to returning any parts or equipment. In all cases freight both ways will be at the expense of the customer.

Ten years (10) unconditional warranty on all polyethylene molded reservoirs to be free of from cracks and or corrosion.

Three years (3) warranty on all automatic scrubbers and floor machines motors and gearboxes against defects in material and workmanship under normal use, subject to the conditions below. Excludes rubber or wearable components and springs.

One year (1) unconditional warranty on labour and equipment parts under normal use, care and maintenance with the exception of rubber or wearable components and springs.

The provisions of this warranty shall not apply to any unit of Michael's Equipment which has been subject to misuse, negligence or accident, or has been repaired or altered by any person(s) outside an authorized repair depot, in any way so as, in the judgment of Michael's Equipment to affect adversely its performance and reliability, nor to normal maintenance services and the replacement of service items (including but not limited to electric cord, painted parts, any rubber parts and springs, switch, bearings and vacuum motor) made in connection with such services.

This warranty is expressly in lieu of all other warranties, expressed or implied, statutory or otherwise, and of all other obligations or liabilities on the part of Michael's Equipment of any kind of character including without limiting the generality of the foregoing liabilities for alleged representation or negligence. Michael's Equipment does not assume any liability other than that herein assumed. No person, including any distributor, agent or representative of Michael's Equipment is authorized to make any representations or warranty concerning equipment on behalf of Michael's Equipment except to refer purchasers to this warranty.

Michael's Equipment disclaims any liability or loss of production, loss of time, loss of profit and other similar indirect loss, which might occur as a result of product failure.

TERMS AND CONDITIONS

Credit and Payment: Net 30 days from invoice date- subject to prior credit approval. NSF cheque charge is \$50.00. Overdue accounts are subject to a finance fee of 2% per month on the open balance. Shipments will automatically be considered on hold/suspended if unpaid invoices exceed 30 days past due. Payment by Visa or Mastercard welcome.

Pricing and Orders: Receipt of or possession of the price list does not constitute an obligation to sell. Minimum order \$300.00 Net (Parts \$50.00). An administrative charge of \$25.00 may apply to all other orders. Goods and Services Tax extra. Telephone orders are accepted however to ensure accuracy please use email orderdesk@michaelsequipment.ca or fax. Phone orders for all custom cut/made products must be confirmed in writing.

Delivery and Freight: All goods are sold on F.O.B. Michael's Equipment Ltd. Paris warehouse basis. Shortages and damage must be noted on the delivery record. All such shortages/damage including concealed damage must be reported in writing to Michael's Equipment Ltd. within 48 hours of delivery. All risk of loss shall pass to the purchaser upon delivery to the carrier.

Returns: No goods will be accepted for return without prior authorization, shipment of unauthorized returns will be refused at shipper's expense. Goods purchased more than 180 days prior will not be considered for return. Merchandise authorized for return will be subject to a restocking charge of 20% and must be returned freight prepaid.

Sizes and Weights: All sizes and weights stated in this price list are approximate and shown for reference only.

**ALL PRICES ARE SUBJECT TO CHANGE WITHOUT NOTICE POSSESSION OF THE PRICE LIST
DOES NOT CONSTITUTE AN OFFER TO SELL**

\$8.00

Michael's Equipment Ltd. was founded in the early 1900's as a manufacturer of floor machines. The company quickly discovered the need to produce and supply a variety of floor care equipment. Through the decades, Michael's has continued on to its present day form as a Master Wholesaler for a variety of very recognizable, name brand and private label products. We want to celebrate the past and look forward with great optimism to the future. We sincerely appreciate your business.

Model 1002
(mid 1900's)



 **MICHAEL'S**

Michael's Equipment Ltd.
PO Box 72, 105 Scott Ave.
Paris, ON N3L 3E5 Canada
Phone: 1-800-263-3731 or (519) 442-0317
Fax: 1-800-489-7280 or (519) 442-0673
Email: info@michaelsequipment.ca

www.michaelsequipment.ca