

ROOFING SYSTEM

Single ply, TPO membrane roofing fully-adhered.

1. Classified by Underwriters Laboratories as a Class A roofing material for use in construction of Class A roofing assemblies.
2. Comply with requirements for FM Class 1A fire and I-90 wind resistance.
3. TPO Membrane: Scrim-reinforced, thermoplastic polyolefin, EP-based sheet, bearing UL label on packaging.

a. Thickness: 0.045 inch, nominal, when measured in accordance with ASTM D 751.

b. Color: Beige.

MANUFACTURER

- A. Acceptable Manufacturers:

1. Versico Incorporated; Website: www.versico.com

WARRANTY

- A. Correct defective Work within a two year period following Date of Substantial Completion.
- B. Provide manufacturer's 15-Year "Total System Warranty", "No Dollar Limit" (NDL) type, covering material and labor costs of corrective work resulting from failure to prevent penetration of water.
- C. Submit installer's request for warranty to manufacturer, accompanied by the following, before delivery to Architect.

1. Samples and data sheets of all materials not supplied or approved by manufacturer.

2. Type and thickness of insulation.

3. Shop drawings.

Roof Insulation: Any polyisocyanurate insulation accepted in writing by membrane manufacturer and approved by its manufacturer for fully-adhered and mechanically attached installations.

1. Thickness: Minimum 2 inch thickness PER LAYER.
2. Tapered Insulation: Where indicated on drawings sloping at 1/4" in 12". Refer to roof plan.

Insulation Overlayment: Fiber glass faced gypsum board for roofing that is approved by its manufacturer for mechanically attached installation indicated.

1. Thickness: 1/4 inch.
2. Acceptable Product: "Dens-Deck" Prime Roof Board manufactured by G-P Gypsum Corporation; Website: www.gp.com/gypsum.

SUBMITTALS

- A. Shop Drawings: Submit roof drawing indicating details to be employed in the project.

Include:

1. Outline and size of the roof.

2. Tapered roof insulation layout.

3. Membrane sheet layout.

4. Location and type of penetrations.

5. Perimeter and penetration flashing detail references.

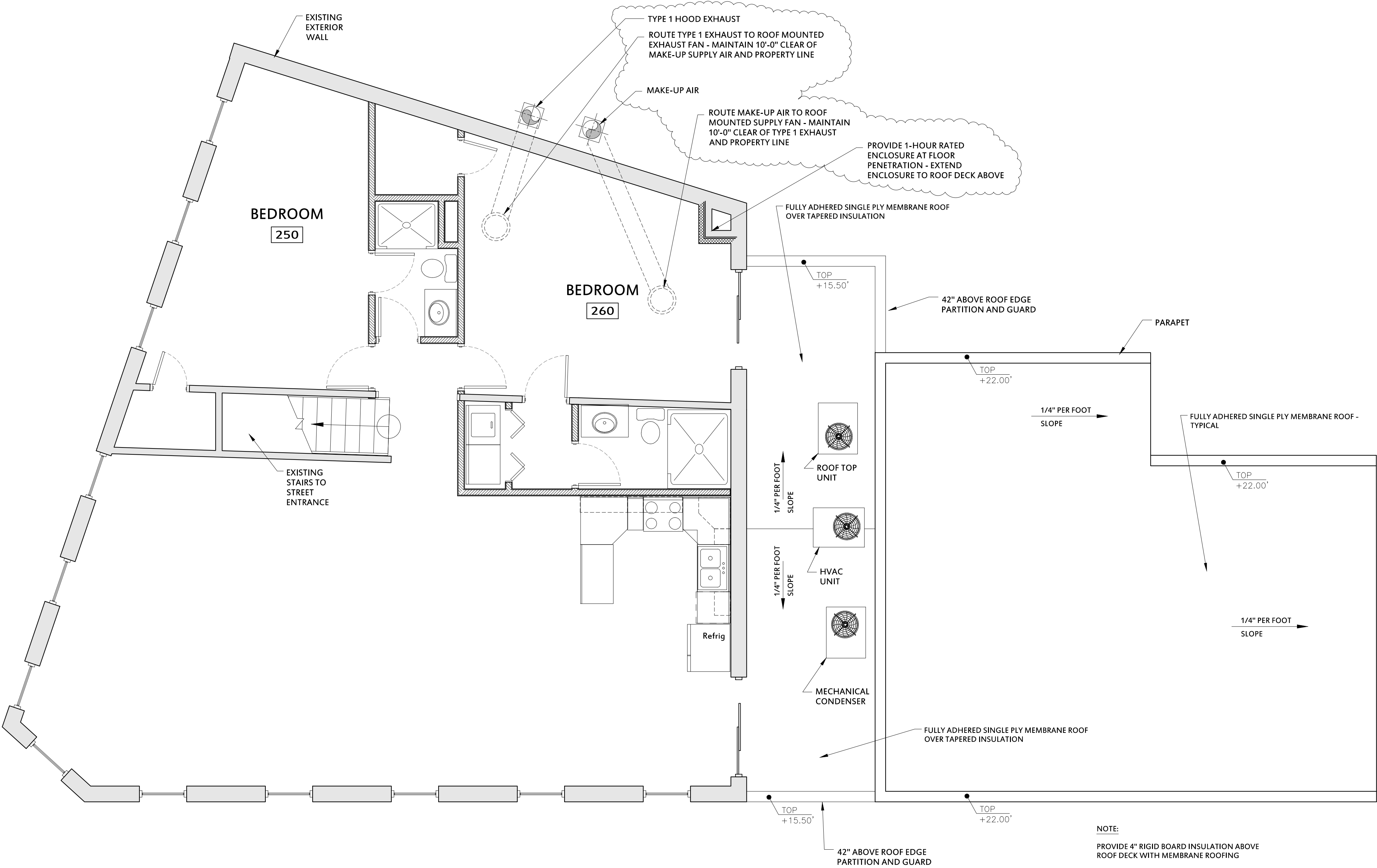
6. Complete drawings of all non-manufacturer-standard details to be used, with details of construction.

7. Indicate elevation changes in parapet walls, fire walls, adjacent roof areas, and similar roof geometry.
- B. Samples:

1. Membrane: 2 3 x 6 inch pieces.

2. Fasteners: One of each type.
3. Metal accessories: One of each type.
- C. Certification:

Manufacturer's written approval of this specification and of any proposed deviations from the specification or drawings or previously approved details. The manufacturer's approval does not constitute a waiver of the requirements of this specification or the drawings or approval of deviations not specifically itemized. Do not proceed with such deviation without the written approval of the Architect.



2ND FLOOR PLAN

SCALE: 1/4"=1'-0"

DRAWING SCALE (IN FEET)

Architect:

Thomas McInerney
ARCHITECT

3 1 9 . 3 3 1 . 0 3 6 5

1208 Marcy Street Iowa City, Iowa 52240
www.thomasarchitect.com
thomas@thomasarchitect.com

Project :

Restaurant

219 16th Avenue SE
Cedar Rapids, Iowa

Project number: 15.01

Note: © COPYRIGHT 2015
UNAUTHORIZED COPYING, DISCLOSURE OR
CONSTRUCTION WITHOUT WRITTEN
PERMISSION BY THOMAS MCINERNEY,
ARCHITECT, IS STRICTLY PROHIBITED.

Issue date: Description

SEP 24, 2015 PERMIT APPLICATION
OCT 23, 2015 REVISIONS

Sheet Title:

2ND
FLOOR PLAN

Sheet Number:

A-102