

# Exmoor Farmers Livestock Auctions Ltd

**Under Instructions of  
Higher Roddon Farm**

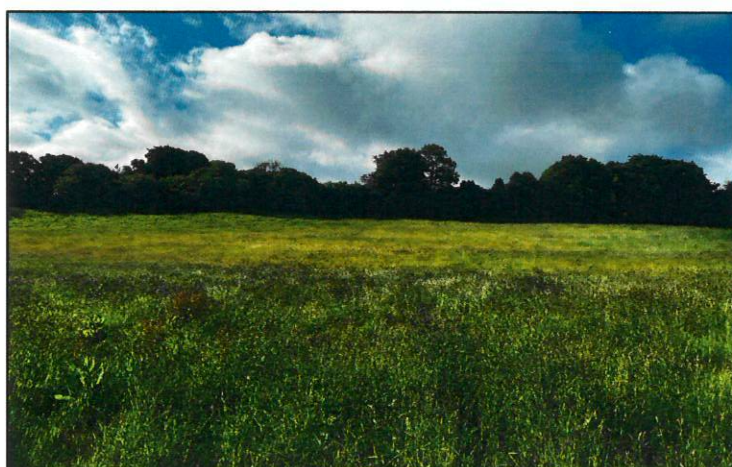
## **MOWING LAND AVAILABLE BY TENDER**

**AT MAUNDOWN, WIVELISCOMBE, SOMERSET TA4 2UN**

**IN TOTAL CIRCA 33 ACRES COMPRISING TWO BLOCKS OF 26  
ACRES IN ONE AND A FURTHER 7 ACRES IN A SECOND**

Being a total of 7 parcels in all.

Tenders to be received by Exmoor Farmers Livestock Auctions Ltd with a total price for taking one crop of grass which must be removed by 31<sup>st</sup> July 2022 at the latest.



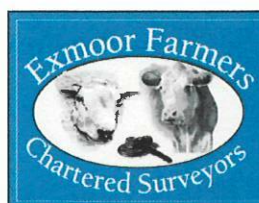
**FOR SALE BY TENDER**

**Wednesday 22<sup>nd</sup> June 2022 at 12noon**

**NOTIFY BY EMAIL, LETTER OR TELEPHONE**

**Viewing by appointment only with Exmoor Farmers Livestock Auctions Ltd 01643 841841**

**Directions:** From Wiveliscombe take North Street towards Langley. Follow this road and you reach Higher Roddon after approximately 1.5 miles from Wiveliscombe. The farm is on the left opposite the Water Works.



**Tel: 01643 841841**

**Exmoor Farmers Livestock Auctions Ltd  
Cutcombe Market, Wheddon Cross, Minehead, TA24 7DT  
[www.exmoorfarmers.co.uk](http://www.exmoorfarmers.co.uk)**



