

*Evidence collected from the office of*

*Edmund DeLacey*

*I.O.U*

*-Hugh*

*St. Laurent*



POSTAL TELEGRAPH



COMMERCIAL CABLES

**TELEGRAM**

The Postal Telegraph-Cable Company (Incorporated) transmits and delivers this message subject to the terms and conditions printed on the back of this blank.

COUNTER NUMBER.

TIME FILED.

CHECK.

Oct 18, 1910: 9:33am M.

101

Send the following message, without repeating, subject to the terms and conditions printed on the back hereof, which are hereby agreed to.

Mr. Edmund DeLacey,

Regarding newspaper position 25% ownership with \$655 salary per yr.

Please respond promptly

London Free Press



Charlotte DeLacey  
Interview:

-Do you know anyone that would have wanted to kill  
your husband?

-No, Of course not

-Do you recall anything suspicious happening the  
day he was murdered?

-Yes, I went into the dining room to get Maggie the  
good china plate when I saw Maggie with the men's  
tea tray. I noticed Hugh hand Maggie a large stack  
of money under the table, before I had entered the  
room. I assumed it was for her mother. She has  
fallen extremely ill you know. And Hugh is a  
compassionate man, The St. Laurents are very  
wealthy.

-Did you know about your' Husband's job offer in  
London?

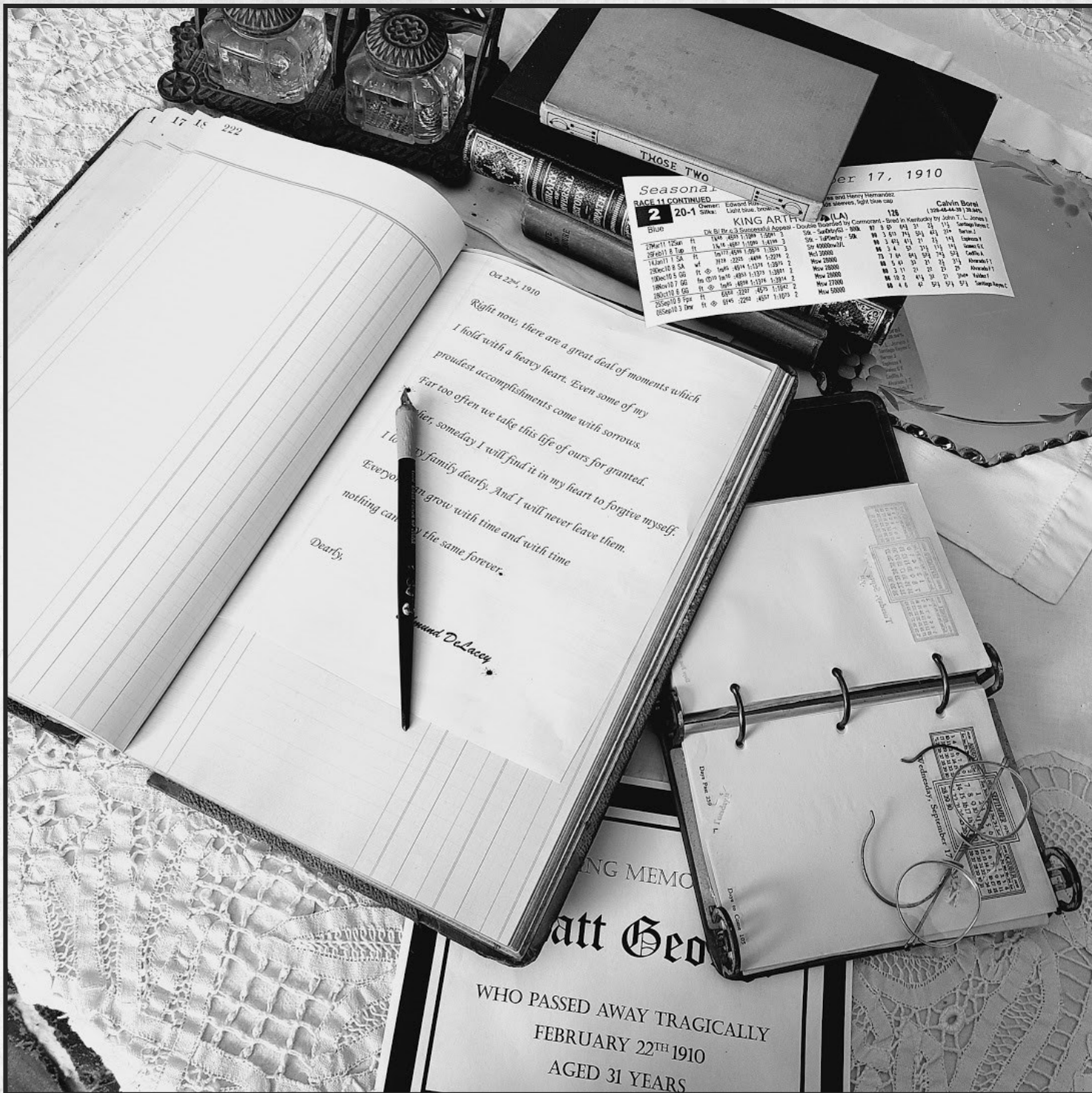
-\*glaring\* I did.





*The Crime Scene*

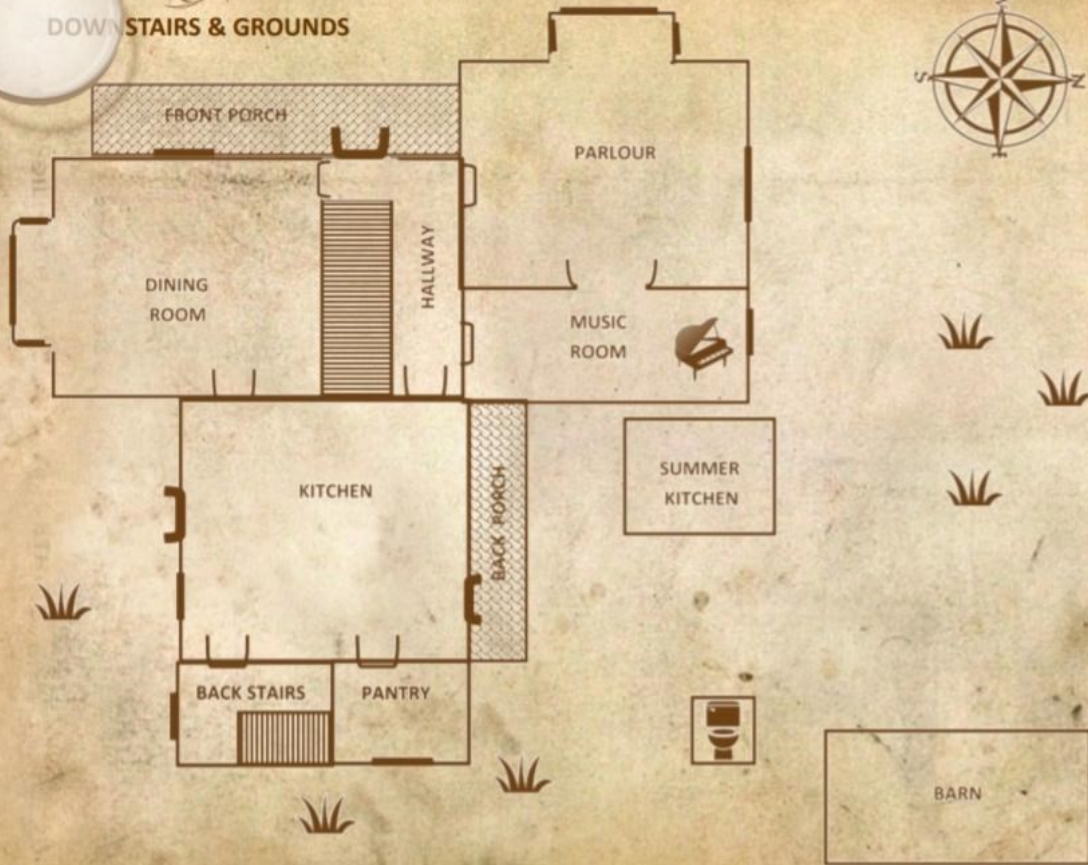




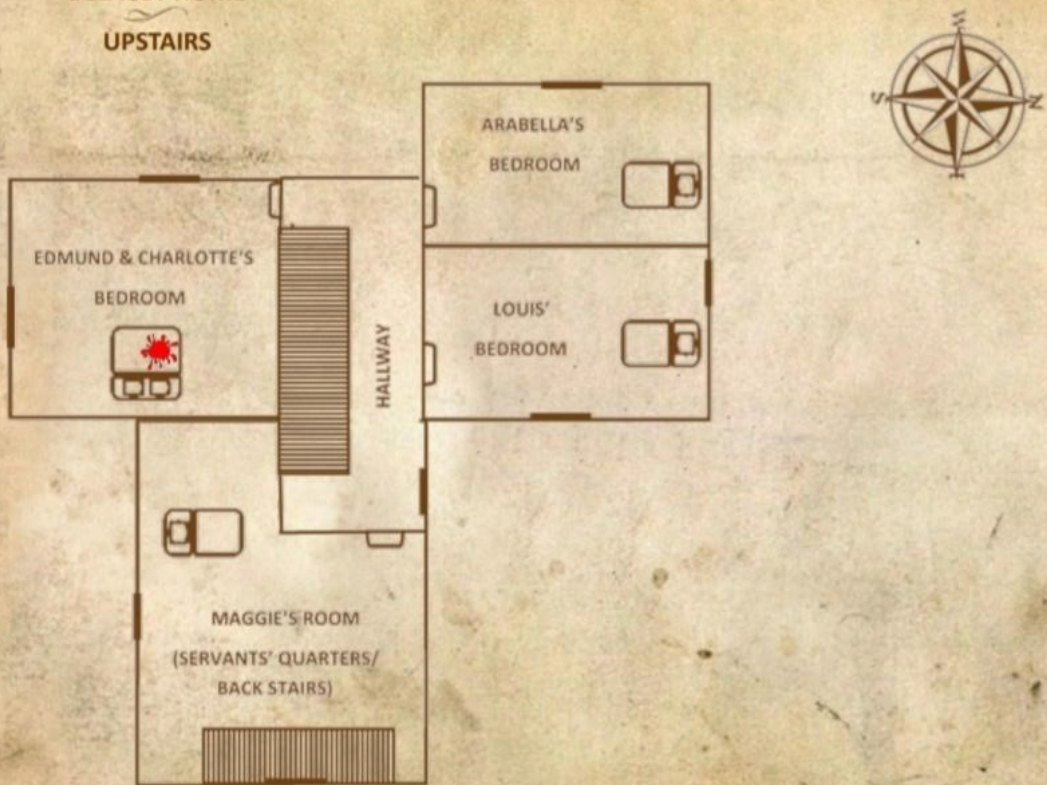
*Last Known Where-Abouts  
of Edmund DeLacey:  
The DeLacey Dining Room*



DELACEY HOME  
DOWNSTAIRS & GROUNDS



DELACEY HOME  
UPSTAIRS





October 24<sup>th</sup>, 1910: 1:43pm

Charlotte is hosting the monthly Literary Society meeting in her home one crisp sunny Saturday. Maggie is serving Earl Grey tea and sponge cakes. Genevieve and Hugh St. Laurent are the second to last guests to arrive through the front door. Genevieve goes to the parlour with the other women while Hugh goes to the dining room where Edmund is writing his best ideas for his latest story down in his notebook. Maggie brings the men their tea but upon seeing the mess in the dining room and hearing the women laughing in the parlour, Maggie moves the men upstairs. The true gentleman that he is, Hugh offers to carry the tray upstairs so that Maggie can get back to her work. The men take the main staircase, and many guests notice but pay no mind.

About 15 minutes later, Hugh comes down, saying goodbye to the ladies before leaving through the front door. His wife follows him outside, saying she will be back in a moment.

Helen and Sarah-Jane lead the group in a sing-along prior to starting their official meeting as Charlotte is still giving Maggie some last-minute directions in the kitchen to ensure everything is perfect for her guests. Agatha arrives last and she has brought some medication for Edmund's arm. Sarah-Jane excuses herself to the outhouse and Helen announces that she is going to the kitchen to select a different jam from Charlotte's extensive collection. The ladies all settle in for their meeting after reconvening in the parlour.

Maggie's terrified scream echoes through the house from upstairs and the ladies rush up after her to find Edmund has been murdered.



# Profiles

## Edmund DeLacey



Edmund DeLacey, devoted husband of Charlotte DeLacey and father of two, was once a sailor until the recent and dreadful ice boating accident on the St. Clair River where he tragically lost his arm and his dear friend Wyatt lost his life. Edmund was raised in a wealthy household and grew up in the ten room Victorian home where his family currently resides. Since the accident, Edmund has become the owner and operator of the Sombra Outlook. He is well known for his ability to uncover the hidden truths.

## Charlotte DeLacey



Charlotte DeLacey is the loving wife of Edmund and mother of two children, Louis and Arabella. They met on a hayride in the late heat of August while attending high school in Wallaceburg. They wed in mid-April of 1902, just after Charlotte's 18<sup>th</sup> birthday. As president to the Literary Society, Charlotte enjoys hosting guests and planning fine events. While Charlotte is known to love her husband dearly, her dreams of moving to the bustling city of London and joining the upper echelons of society are well known to her closest confidantes. In the 8 years of their marriage, Charlotte and Edmund have never argued except when Mr. Green recently offered a handsome sum for the family home which would allow them the freedom to move to the city and Edmund refused.



**Louis  
DeLacey**

Age: 8



**Arabella  
DeLacey**

Age: 7



# Genevieve St. Laurent



Wife of Hugh St. Laurent and mother of two, Genevieve is co-owner of her family's Lumber business, Sicken Lumber. Along with the other major businesses, Sicken Lumber owns interests in the Sombra Outlook. Recently, Edmund made a typing error on the newspaper, advertising Sicken's share price as significantly cheaper than intended, thus costing Sicken Lumber, \$900. Despite this mix-up, Genevieve and Hugh are still Charlotte and Edmund's closest friends and the two families regularly go sail boating together on the St. Clair. Genevieve is a member of the Literary Society and sings in the church choir.

# Hugh St. Laurent



Edmund's closest friend, husband of Genevieve St. Laurent, and father of Pierre and Marie. Hugh is the Captain of the tugboat Victory, owned by his wife's family lumber company. When home from cruising the Great Lakes, Hugh enjoys the finer things in life including whiskey at the Grand Union and betting on his favourite horse, King Arthur, at the Sombra Racetrack. The wives have noticed that Edmund and Hugh have been unusually tense around each other as of late and Hugh has been away for work more frequently over the past several months.

# Helen George



Helen George is the childhood best friend of Edmund DeLacey. As teenagers, everyone expected Helen and Edmund to marry but Edmund met Charlotte and fell madly in love. Edmund broke off the assumed arrangement with Helen. Helen married four years later only to have her husband tragically pass away. Now a widow, she is the devoted treasurer of the Literary Society, successful hat maker, and close confidant of Charlotte DeLacey. The DeLaceys frequently invite her over for Sunday brunch.



## Maggie McMurphy



Maggie McMurphy has been the maid of DeLacey household since the DeLacey's first married. The daughter of Irish immigrants, she comes from a large family and over the last six months, has expressed her concern for her ill mother to the DeLacey's who give their deepest sympathies. While devoted to the DeLacey family, Maggie has been seeking opportunities for greater income to aid her struggling family.

## Sarah-Jane Mathews



Sarah-Jane and her husband Jack Mathews are neighbours of the DeLacey's. Every Saturday Sarah comes to the DeLacey household to teach piano lessons to Louis and Arabella. She is the quiet, well-mannered, secretary of the Literary Society. Her husband Jack was recently let go from the Sombra Outlook due to some peculiar financial strains on the seemingly successful newspaper.

## Agatha Black



Agatha Black is the widow of pharmacist Bill Black. The local children fear walking past her unkept home near the graveyard. There have been whispers of her leaving the woods late at night with a covered basket in tow, collecting frogs at the brick pond, chanting poetry in the graveyard, and lighting black candles in the window. While all her friends in the Literary Society know that she is a bit eccentric, the children's rumours are nonsense as far as they are concerned.