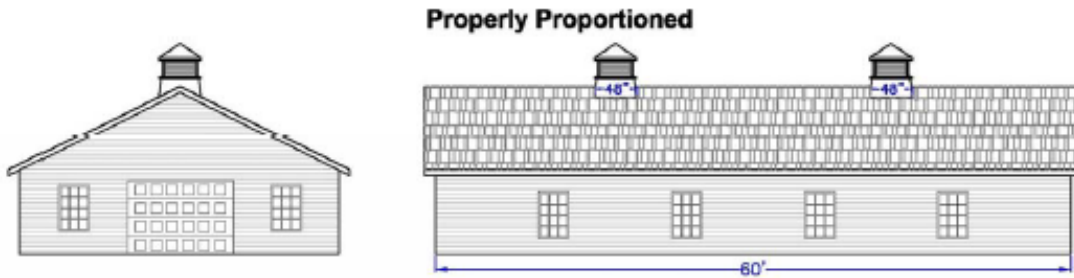


Cupola Sizing 60' Building

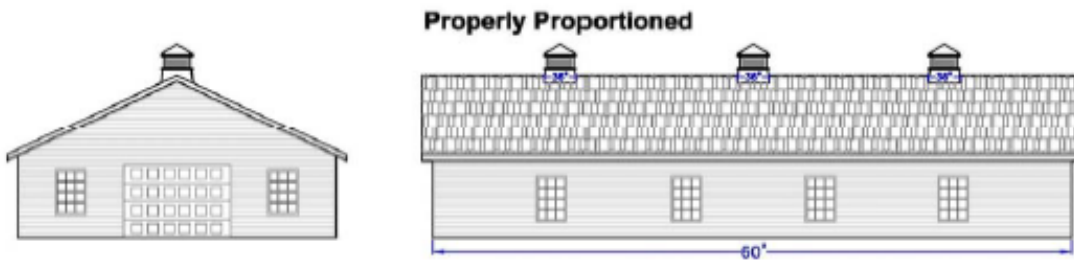
When properly sizing (1) cupola, a general rule of thumb is a minimum of 1.25" of cupola base width for every foot of unbroken roof ridge line. For (2) or (3) cupolas use 1.5" and for (4) or more cupolas use 1.75".



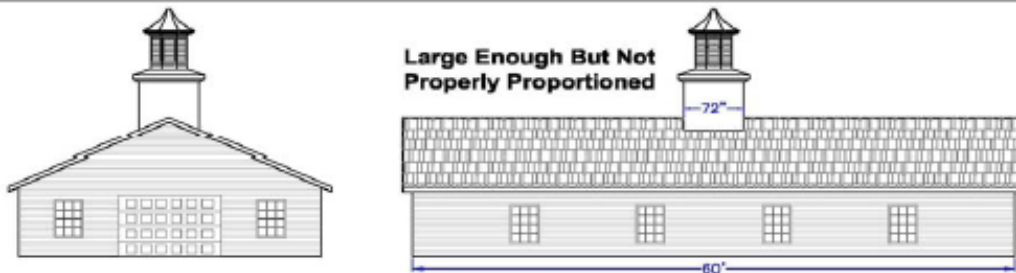
Using the rule of 1.5" of cupola base width for every foot of unbroken ridge line, (2) model 400 cupolas are properly proportioned for this 60ft long building.



Using the rule of 1.5" of cupola base width for every foot of unbroken ridge line, (1) model 400 cupola and (2) model 200 cupolas are properly proportioned.



Using the rule of 1.5" of cupola base width for every foot of unbroken ridge line, (3) model 300 cupolas are properly proportioned.



Using the rule of 1.25" of cupola base width for every foot of unbroken ridge line, (1) model 860-LP cupola doesn't appear properly proportioned.



PIEDMONT
COMPOSITES & TOOLING

33 Lewittes Road
Taylorsville, NC 28681
Phone: 828-632-8883 Fax: 828-632-5585
www.piedmontcomposites.com