



STOWMARKET SPRINGS
in Caledon

The Dahlia - 2680 SQ.FT

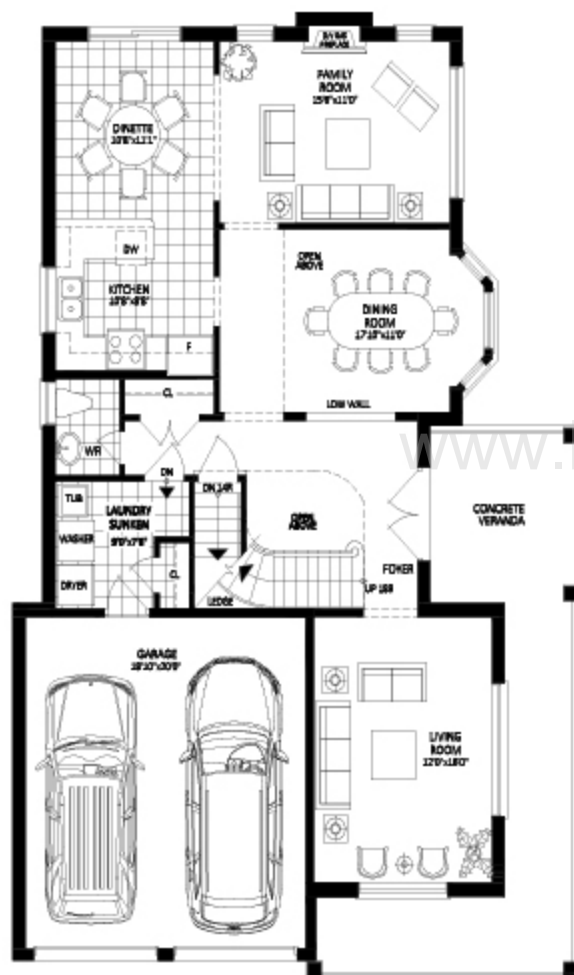


Rendering is an artist's concept only. In an effort to develop a better product, Digreen Homes reserves the right to change dimensions, elevations, specifications, material, design and prices without notice or obligations. Actual useable space may vary from stated floor area. Furniture and vehicle placement are for illustrative purposes only and are an artist's concept. E.&O.E.

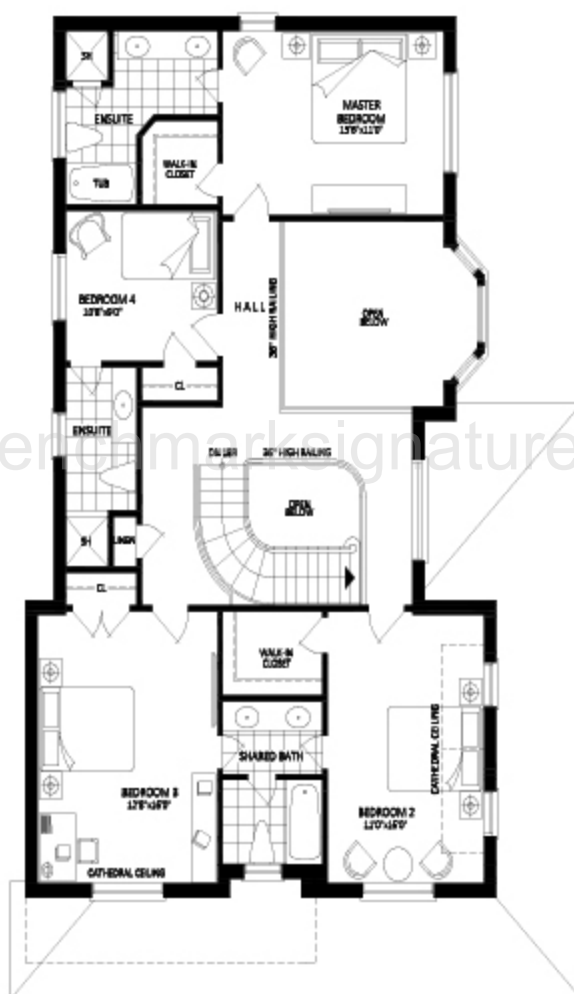


STOWMARKET SPRINGS
in Caledon

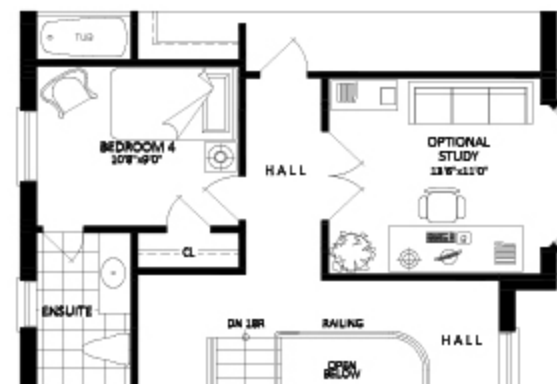
4 BEDROOMS, 3.5 BATHROOMS, OPT. STUDY ROOM



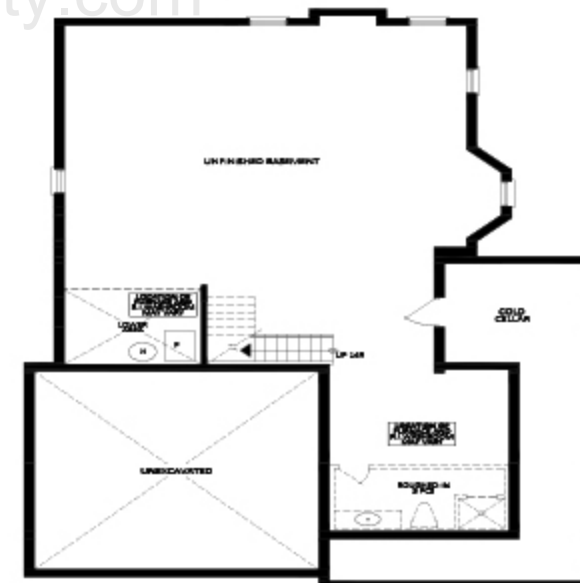
Main Floor



Second Floor



Option Study Room



Basement

Rendering is an artist's concept only. In an effort to develop a better product, Digreen Homes reserves the right to change dimensions, elevations, specifications, material, design and prices without notice or obligations. Actual useable space may vary from stated floor area. Furniture and vehicle placement are for illustrative purposes only and are an artist's concept. E.&O.E.





STOWMARKET SPRINGS
in Caledon

The Acacia - 2950 SQ.F.T



Rendering is an artist's concept only. In an effort to develop a better product, Digreen Homes reserves the right to change dimensions, elevations, specifications, material, design and prices without notice or obligations. Actual useable space may vary from stated floor area. Furniture and vehicle placement are for illustrative purposes only and are an artist's concept. E.&O.E.



This floor plan shows a 2-story house with a garage, dining room, family room, kitchen, laundry, and living room. The layout includes a dining room (17'0" x 27'0") with a round table and chairs, a family room (18'4" x 23'2") with a sofa and armchair, a kitchen (10'8" x 18'8") with a sink, stove, and refrigerator, a laundry room (9'0" x 7'8") with a washer and dryer, and a living room (13'8" x 17'0") with a sofa and armchair. The house also features a concrete veranda, a porch, and a garage (17'0" x 21'8") with two cars parked. The plan includes various rooms, stairs, and a central hallway.

This floor plan illustrates a 4-bedroom residence with a central hall and a curved staircase. The layout includes:

- Master Bedroom:** Located at the top right, measuring 15'6" x 12'6", featuring a large bed, a dresser, and a closet.
- Bedroom 4:** Located in the middle left, measuring 10'8" x 12'0", with a bed and a closet.
- Bedroom 3:** Located at the bottom left, measuring 11'8" x 14'10", with a bed and a closet.
- Bedroom 2:** Located at the bottom right, measuring 13'9" x 11'7", with a bed and a closet.
- Bathrooms:**
 - Enclave:** Located at the top left, containing a tub, toilet, and sink.
 - Enclave:** Located in the middle left, containing a toilet and sink.
 - Shared Bath:** Located at the bottom center, containing a tub, toilet, and sink.
- Hall:** A central hall connects the bedrooms and bathrooms.
- Staircase:** A curved staircase is located in the center of the plan, with an "UP" arrow indicating the direction to the second floor.
- Other Features:**
 - Walk-in Closet:** Located near the Master Bedroom and Bedroom 4.
 - Open Area:** A large open area is located in the middle right, adjacent to the Master Bedroom.
 - Door:** A door is located at the bottom center, leading to the Shared Bath.

The floor plan for the second floor includes the following areas:

- BEDROOM 4**: 10'8" x 9'10"
- HALL**: Central hallway connecting the bedroom, study, and en-suite.
- OPTIONAL STUDY**: 15'0" x 11'0"
- EN-SUITE**: Attached to the bedroom area.
- CL.**: Closet area.
- DOWN**: Stairs leading down.
- RAILINGS**: Located near the stairs.
- HALL**: Another hallway area at the bottom of the plan.
- OPEN BELOW**: Indicated near the stairs.

Rendering is an artist's concept only. In an effort to develop a better product, Digreen Homes reserves the right to change dimensions, elevations, specifications, material, design and prices without notice or obligations. Actual useable space may vary from stated floor area. Furniture and vehicle placement are for illustrative purposes only and are an artist's concept. E.&O.E.





STOWMARKET SPRINGS
in Caledon

The Violet - 2740 SQ.FT.

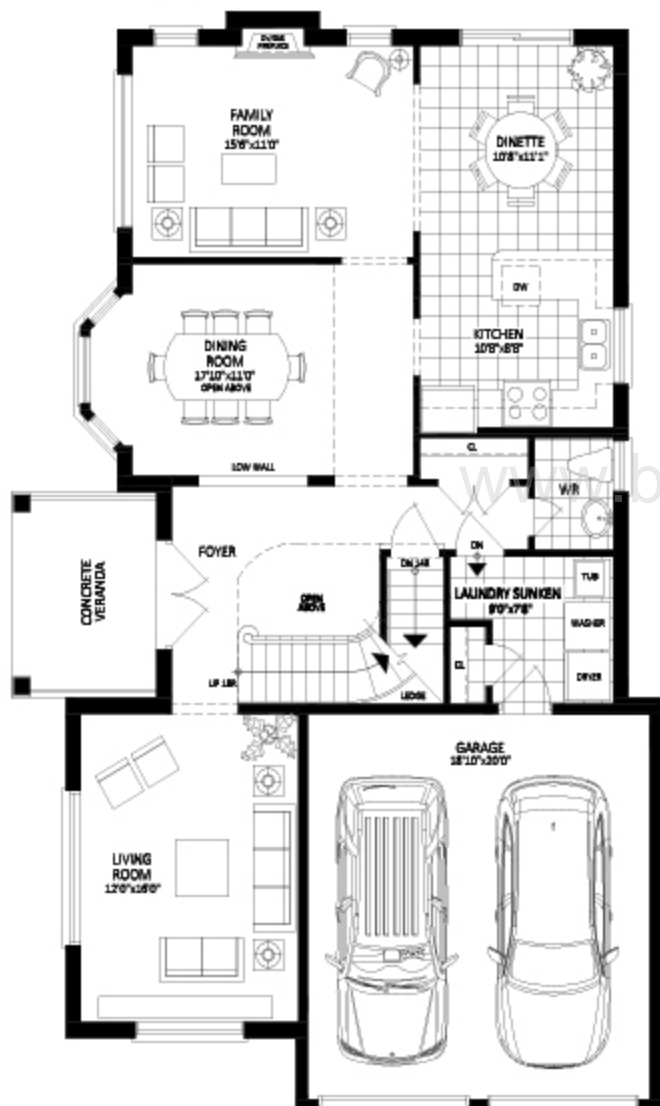


Rendering is an artist's concept only. In an effort to develop a better product, Digreen Homes reserves the right to change dimensions, elevations, specifications, material, design and prices without notice or obligations. Actual useable space may vary from stated floor area. Furniture and vehicle placement are for illustrative purposes only and are an artist's concept. E.&O.E.

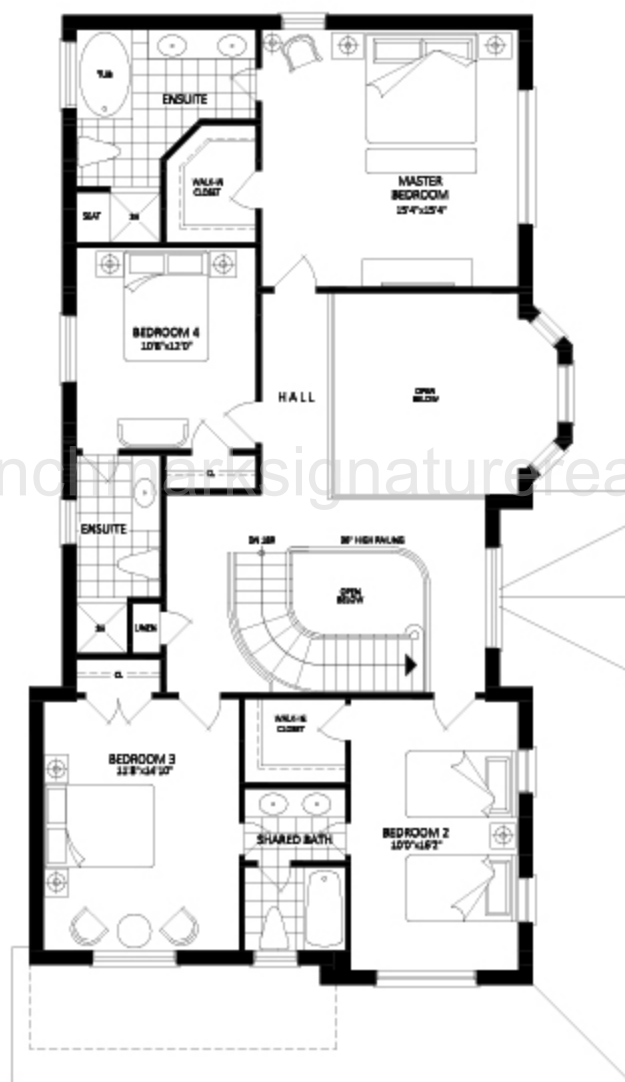


STOWMARKET SPRINGS
in Caledon

4 BEDROOMS, 3.5 BATHROOMS, OPT STUDY ROOM



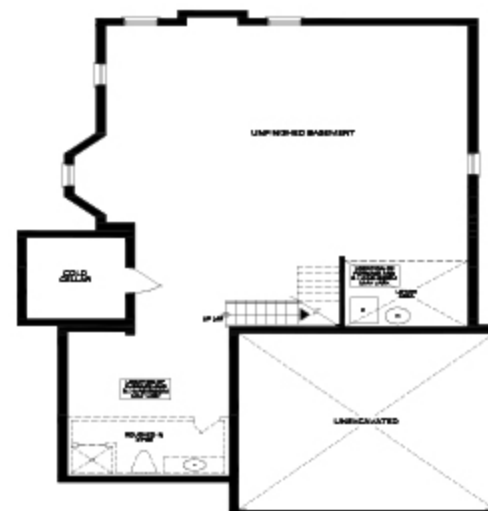
Main floor



Second Floor



Option Study Room



Basement

Rendering is an artist's concept only. In an effort to develop a better product, Digreen Homes reserves the right to change dimensions, elevations, specifications, material, design and prices without notice or obligations. Actual useable space may vary from stated floor area. Furniture and vehicle placement are for illustrative purposes only and are an artist's concept. E.&O.E.





STOWMARKET SPRINGS
in Caledon

The Merigold C - 2910SQ.FT.

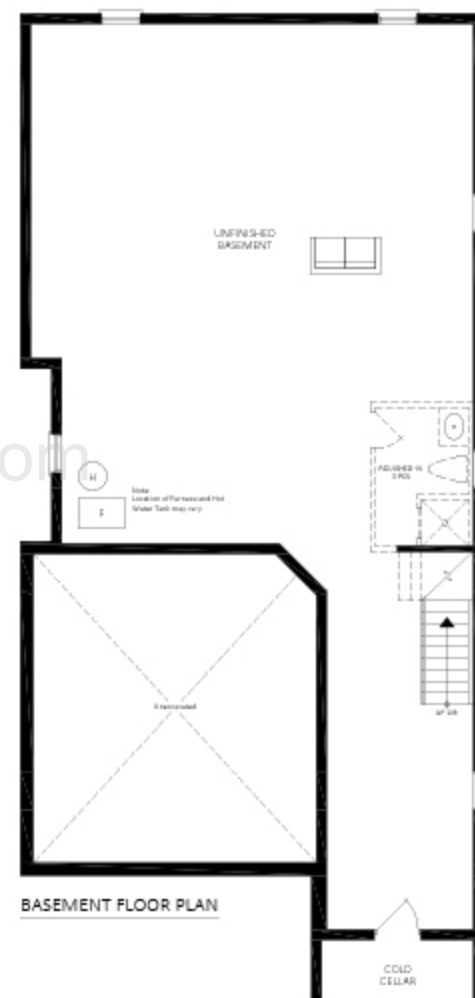
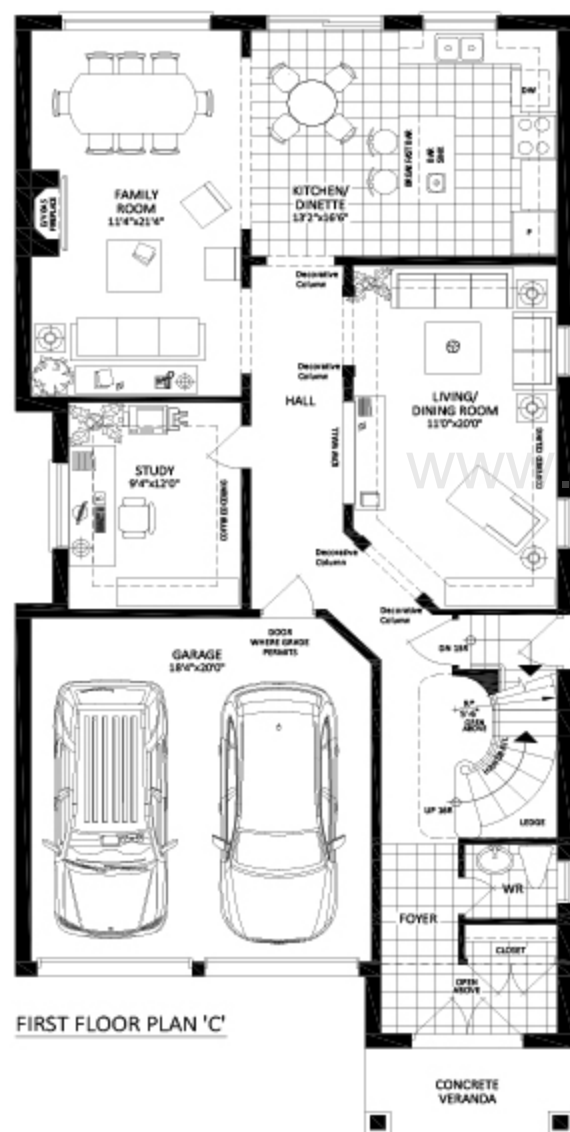


Rendering is an artist's concept only. In an effort to develop a better product, Digreen Homes reserves the right to change dimensions, elevations, specifications, material, design and prices without notice or obligations. Actual useable space may vary from stated floor area. Furniture and vehicle placement are for illustrative purposes only and are an artist's concept. E.&O.E.



STOWMARKET SPRINGS
in Caledon

4 BEDROOMS, 3.5 BATHROOMS, SIDE ENTRANCE W/ BASEMENT WALKOUT.



Rendering is an artist's concept only. In an effort to develop a better product, Digreen Homes reserves the right to change dimensions, elevations, specifications, material, design and prices without notice or obligations. Actual useable space may vary from stated floor area. Furniture and vehicle placement are for illustrative purposes only and are an artist's concept. E.&O.E.

