

# Puriti Taps

## FANCY PURIFIED, FILTERED COLD WATER ON TAP?

Choose a Caple Puriti tap to deliver regular hot and cold water with the added benefit of fresh filtered water. It is either dispensed using a third lever or sometimes fully integrated into the standard design.

An ingenious filtration system is hidden from sight in the kitchen unit, and by turning the filtration tap, your normal cold water supply is diverted via the Caple filter to the tap and in to your glass. It is also great for areas with particularly hard water. By using the filtered water in kettles and cooking you greatly reduce the damaging impact of lime-scale build up in appliances and reduce the effect of water impurities during food preparation, whilst also improving tea and coffee.

### HOW IT WORKS

As the filter tap is turned the normal cold water supply is redirected through a series of filtration processes including activated carbon. This removes almost all chlorine improving the taste, and other impurities such as particulates, bacteria, rust, heavy metals and pesticides, while also acting as a scale inhibitor. It also helps maintain the pH balance of the water, which is much healthier than consuming overly acidic or alkaline normal tap water.

### WHY IT'S GOOD

Caple Puriti filter can last up to 4 x longer compared to other filtration systems on the market. Puriti filters up to 6000 litres compared to only 300 - 1500 litres.

The Caple Puriti filter is discreetly installed under the sink. It will be easily accessible for changing which will need to be done about every six months. This is a very straight-forward process that does not require any tools.

Replacement filters and fixing kits are available to buy online at [www.caple.co.uk](http://www.caple.co.uk)

**caple**  
**PURITI**





## HARLO PURITI

Stainless STEEL PURITI



**HARPUR/BS** - Black Steel

**HARPUR/CO** - Copper

**HARPUR/GM** - Gunmetal

**HARPUR/SS** - Stainless Steel

### GENERAL FEATURES

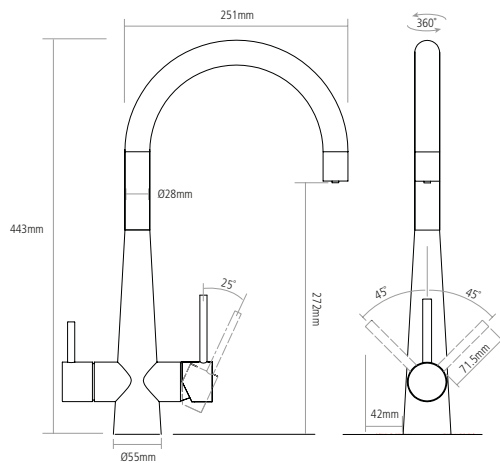
- Solid stainless steel with metallic PVD coating
- Monobloc design
- Minimum 0.5 bar pressure required
- Quarter turn ceramic valve lever for filtered water
- Single lever ceramic valve for hot and cold water
- Single flow for hot and cold water
- Water filter kit included
- Separate filtered supply [filter included]

### OPTIONAL EXTRAS

- PURITI1 Replacement filter
  - FILTERMETER Digital filter water meter
- Available to buy online [www.caple.co.uk](http://www.caple.co.uk)

### DIMENSIONS

- Worktop cut out 35mm required



## HARLO PURITI

Stainless STEEL PURITI



**HARQPUR/SS** - Solid Stainless Steel

### GENERAL FEATURES

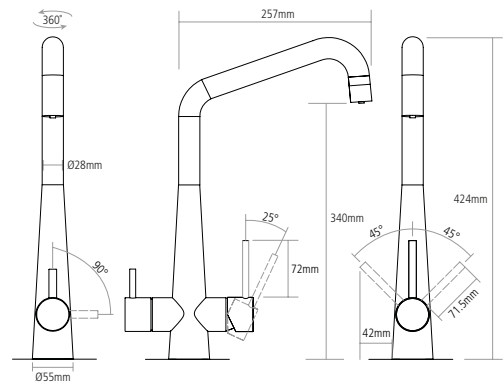
- Monobloc design
- Minimum 0.5 bar pressure required
- Quarter turn ceramic valve lever for filtered water
- Single lever ceramic valve for hot and cold water
- Single flow for hot and cold water
- Water filter kit included
- Separate filtered supply [filter included]

### OPTIONAL EXTRAS

- PURITI1 Replacement filter
  - FILTERMETER Digital filter water meter
- Available to buy online [www.caple.co.uk](http://www.caple.co.uk)

### DIMENSIONS

- Worktop cut out 35mm required



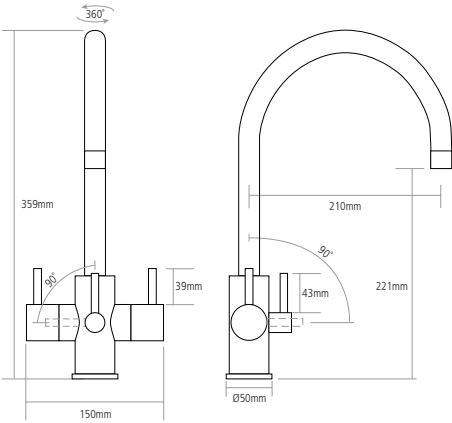
ARDOR PURITI

ARDPUR/CH - Polished Chrome



- GENERAL FEATURES**
- Monobloc design
  - Minimum 0.3 bar pressure required
  - Quarter turn ceramic valve
  - Single flow
  - Separate filtered supply [filter included]
- OPTIONAL EXTRAS**
- PURITI1 Replacement filter
  - FILTERMETER Digital filter water meter
- Available to buy online [www.caple.co.uk](http://www.caple.co.uk)

- DIMENSIONS**
- Worktop cut out 35mm required



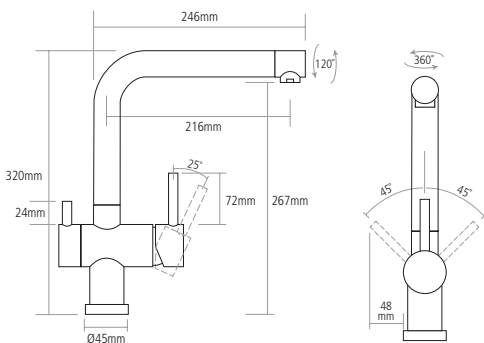
ATMORE PURITI

ATMPUR/CH - Polished Chrome



- GENERAL FEATURES**
- Monobloc design
  - Minimum 0.1 bar pressure required
  - Single lever ceramic valve
  - Single flow
  - Separate filtered supply [filter included]
- OPTIONAL EXTRAS**
- PURITI1 Replacement filter
  - FILTERMETER Digital filter water meter
- Available to buy online [www.caple.co.uk](http://www.caple.co.uk)

- DIMENSIONS**
- Worktop cut out 35mm required



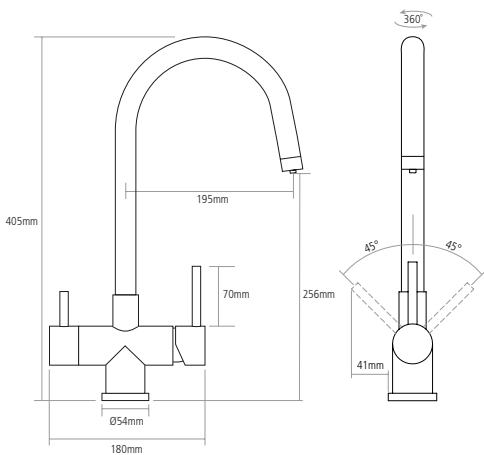
DALTON PURITI

DALPUR2/SS - Solid Stainless Steel



- GENERAL FEATURES**
- Monobloc design
  - Minimum 0.5 bar pressure required
  - Quarter turn lever for filtered water
  - Single lever ceramic valve for hot and cold water
  - Single flow for hot and cold water
  - Separate filtered supply [filter included]
- OPTIONAL EXTRAS**
- PURITI1 Replacement filter
  - FILTERMETER Digital filter water meter
- Available to buy online [www.caple.co.uk](http://www.caple.co.uk)

- DIMENSIONS**
- Worktop cut out 35mm required



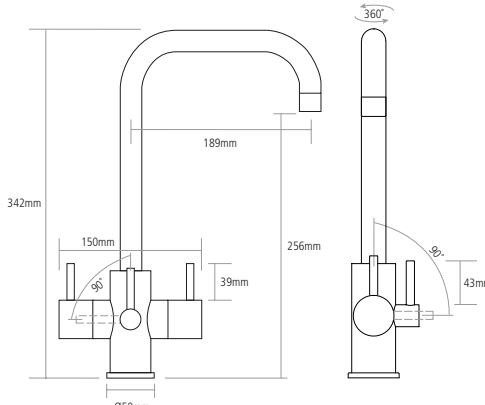
NATICK PURITI

NATPUR/CH - Polished Chrome



- GENERAL FEATURES**
- Monobloc design
  - Minimum 0.3 bar pressure required
  - Quarter turn ceramic valve
  - Single flow
  - Separate filtered supply [filter included]
- OPTIONAL EXTRAS**
- PURITI1 Replacement filter
  - FILTERMETER Digital filter water meter
- Available to buy online [www.caple.co.uk](http://www.caple.co.uk)

- DIMENSIONS**
- Worktop cut out 35mm required



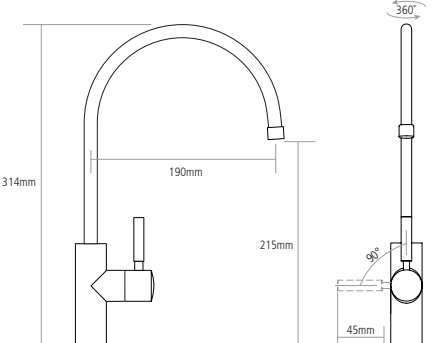
LAYTON PURITI

LAYPUR2/SS - Solid Stainless Steel



- GENERAL FEATURES**
- Single lever design
  - Minimum 0.5 bar pressure required
  - Quarter turn ceramic valve
  - Single flow
  - FILTERED SUPPLY ONLY [filter included]
- OPTIONAL EXTRAS**
- PURITI1 Replacement filter
  - FILTERMETER Digital filter water meter
- Available to buy online [www.caple.co.uk](http://www.caple.co.uk)

- DIMENSIONS**
- Worktop cut out 20mm required



SALUS PURITI

SALPUR/CH - Polished Chrome



- GENERAL FEATURES**
- Single lever design
  - Minimum 0.3 bar pressure required
  - Single lever ceramic valve
  - Single flow
  - FILTERED SUPPLY ONLY [filter included]
- OPTIONAL EXTRAS**
- PURITI1 Replacement filter
  - FILTERMETER Digital filter water meter
- Available to buy online [www.caple.co.uk](http://www.caple.co.uk)

- DIMENSIONS**
- Worktop cut out 22mm required

