



ORION III TILT-IN-SPACE

Inspired by our best-selling Orion II wheelchair. The Orion III is a great addition to our innovative, durable, and affordable Orion line of tilt-in-space wheelchairs.

COLOR OPTIONS



GROW-ABLE FRAME

The Orion III's frame can grow as needed without replacing parts. Up to 4" of width growth is possible, and the wheelchair seat depth is grow-able up to 2" with each seat rail.





SMOOTHER TILT

Dual Cross Gas Cylinders fitted underneath the wheelchair allow for the gentlest, slowest possible tilting of the end user. The wheelchair is lockable at multiple angles.



AXLE PLATE

A Rear Axle mount can be adjusted for the best in stability, while also allowing the end user a wide range of movement.

EZ RECLINE

Dual Cross Gas Cylinders are designed so the wheelchair can recline with the maximum ease.

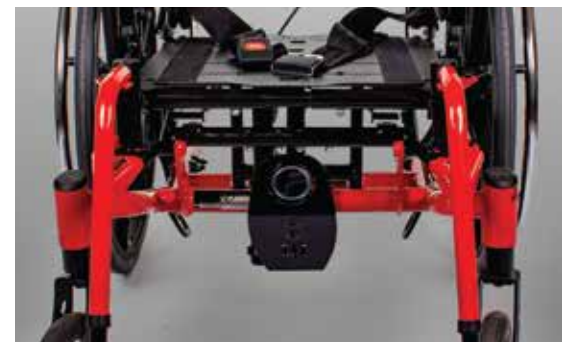


SWINGAWAY FRONT RIGGINGS

Swingaway Front Riggings give the end user the option of swing-out or dual swing-in and swing-out. Ideal for transporting and seating the end user.

SPACIOUS

Large front openings make it easy for the wheelchair to be self propelled.



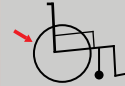
SPECIFICATIONS:

ORION III TILT-IN SPACE



SEAT TO FLOOR

13" - 20"



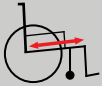
REAR WHEEL

12", 16", 20", 22" OR 24"
COMPOSITE URETHANE



SEAT WIDTH

16" - 24"



SEAT DEPTH

15" - 24"



OVERALL WIDTH

NARROW SEAT WIDTH + 9.5"
REGULAR SEAT WIDTH + 10.0"



CASTER SIZE

4", 5", 6", 8" URETHANE



FRONT RIGGING

SWINGAWAY
DUAL SWINGAWAY
OR DUAL ELEVATING LEGRESTS



PRODUCT WEIGHT

65 LBS (29KG)



ADJUSTABLE BACK ANGLE

-7°, 0°, 7°, 14°, 21°



BACK STYLE

LOW PUSH CANES W/STROLLER BAR
HIGH PUSH CANES W/STROLLER BAR
16", 18", 20" ORION BACK



ARM STYLE

ADJ. HEIGHT T-STYLE
ADJ. HEIGHT PIN RELEASE T-STYLE
ADJ. HEIGHT FLIP BACK



WEIGHT CAPACITY

300 LBS (159 KG)



ADP
Ontario

CODE

WM0001195

WARRANTY:

The Capella, Capella45, Orion II, Orion III and the Super Chair for Kids is warranted to be free from defects in materials and workmanship for a period of one (1) year and the Orion II 500 for period of one (1) year from the date of purchase. The frame has a lifetime warranty and the upholstery for 90 days, upon normal usage by the original purchaser. Power tilt batteries are warranted for six (6) months while the control box, battery charger, actuator and hand control are warranted for one (1) year. If within this warranty period the product shall be proven to be defective, such product shall be repaired or replaced, at Future Mobility Healthcare Inc. discretion.



CANADA

6750 Professional Court, Mississauga,
Ontario, L4V 1X6



1-888-737-4011



www.futuremobility.ca



USA



1 Buffalo River Place, Buffalo,
NY, 14210



1-855-938-8873



www.futuremobility.com