



# Network News



Newsletter of the Wedderburn Conservation Management Network – July 2014

Conserving Biodiversity

## WCMN Eucalyptus Harvesting Site Project

In a previous newsletter I wrote of the planning work that had gone into the restoration of a decommissioned eucalyptus harvesting site located along the Old Boort Road close to Wedderburn. Since then the WCMN has appointed a contractor to complete the work.

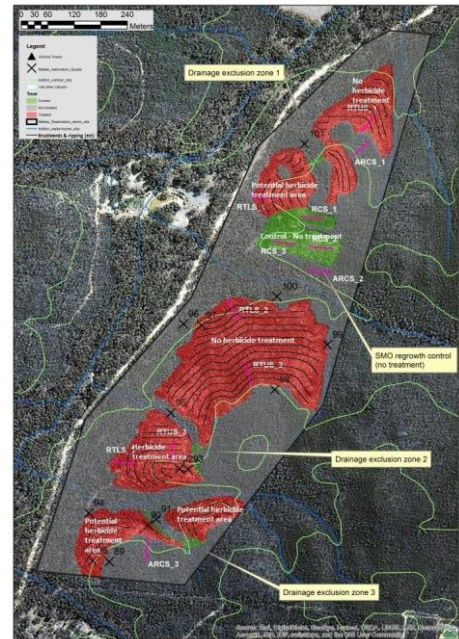
“The restoration strategy for the site - entails three elements:

**Hold up more moisture in the landscape** - (reduce run-off and increase infiltration). Using either a machine (tractor mounted) or manual methods (brush cutters), create a succession of water flow impeding barriers by cutting the regrowth along a series of parallel bands (2-3m wide every 10 to 20 m) and then lay the cut stems (‘brush’) along the contour.

**Incorporate organic matter** using indigenous tussock grasses (Wallaby-grasses) colonisers. To enhance the banded vegetation effect, shallow rip the brush bands to increase water infiltration and permeability rates and therefore improve water capture (and availability to plants) in the immediate downslope area.

**Establish shrubs and robust perennial low lying plants** - Once the brush banding is established, the next step is to introduce suitable vegetation. It is proposed to use indigenous species - a mix of perennial tussock grasses and other common understorey species.” – quoted from the consultant’s report.

On ground work for the restoration of the site got underway on Monday morning 28<sup>th</sup> July. Paul Foreman, consultant for the project, arrived and we proceeded to mark off the bands that were to be treated – see map above. On Wednesday 30<sup>th</sup> a D6 bulldozer arrived followed by eight volunteers from Conservation Volunteers Australia.



Photographs top right – map of the site showing bands to be treated. Bottom – bulldozer and volunteers on site.



The photographs tell the story of what happened next. The bulldozer ripped all the bands in a surprisingly short space of time. Conservation volunteers then moved in to cut the remaining shrubs and lay them with their stems lying parallel to the length of the bands. The next step will be to direct seed by hand the wallaby grass species and the various shrub species that have been sourced from local seed collector Lyndsay Ezard. The seed will be mixed with coarse sand and broadcast along the bands. To date, things are going according to plan.

Article and photographs – Michael Moore

Photographs: top left and right bulldozer ripping lines

Bottom right – volunteers cutting and laying brush along the bands



### **WCMN and the Wedderburn Photographic group**

At the July meeting of the WCMN we were joined by members of the Wedderburn photographic group. This meeting came about as a result of a conversation between Ric Raftis, a member of the Wedderburn Men’s Shed, and myself while the Men’s Shed members were working on the production of nest boxes to be placed in selected areas around Wedderburn. Ric mentioned to me that he was also a member of the Wedderburn photography group and that they were interested in capturing images of nature. I was aware that members of the WCMN were likewise interested in photography hence the suggestion was made that we get both sets of members together to explore areas of mutual interest. The upshot of this was the combined meeting mentioned above.

Following enthusiastic discussion at the meeting it was agreed to arrange a photographic workshop at Rob Scholes Mulwarrie Studios where we could all gain some insight into the mysteries of capturing good clear images of nature.

The work shop, which was attended by members of the WCMN, Friends of Kooyoorra and the Wedderburn photographic group was a great success. We were instructed in how to select the



camera for your needs, appropriate lens for the job and how to approach the task of making small natural objects look large – macro-photography. Following lunch we all went out into the gardens of the studio to practise the newly acquired skills.

One spin off from this photographic work to date is that two Duke of Edinburgh Award students from Wedderburn College have now become involved in photographing flora and fauna in selected areas around Wedderburn as part of the community service aspect of their award – see fungi photos above. Other such workshops and field excursions are planned for the future including a workshop with renowned photographer Alison Pouliot. See also the notice below concerning a photographic day which will be organised by the Friends of Kooyoora.

Article Michael Moore

Photographs – year 9 Wedderburn College students

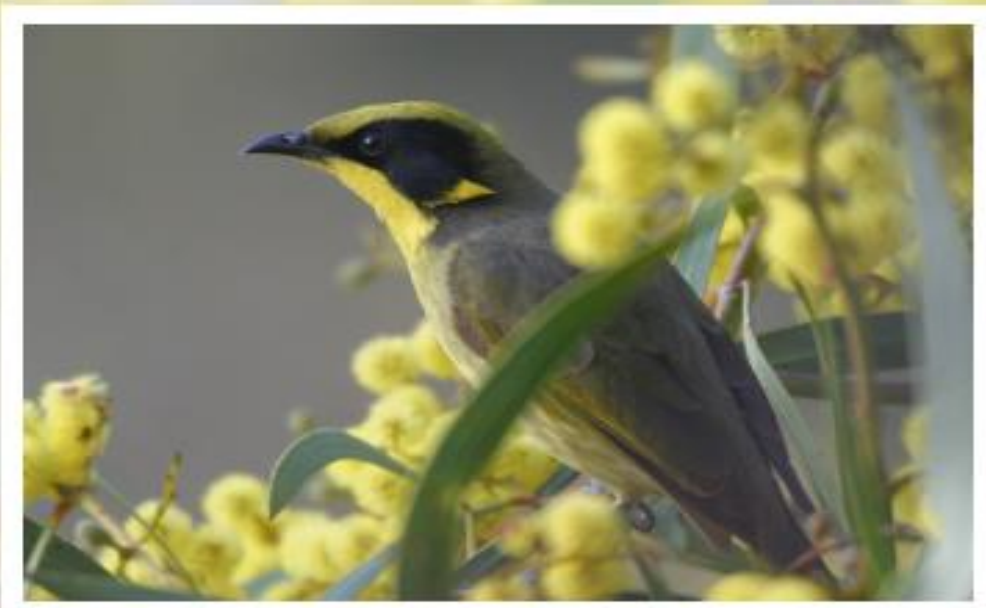
Mitchell Stephenson top fungus photograph

Matt Lockhart bottom fungus photo

The Wedderburn Conservation Management Network  
presents a talk by  
**Andrew Skeoch**  
of Listening Earth

# Hearing Nature

appreciating birdsong & the natural sounds around us



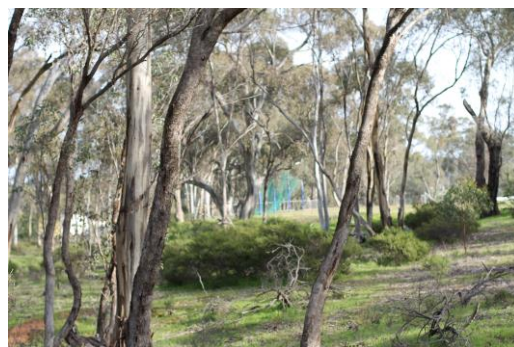
**Sunday, 31st August, 2pm,  
Wedderburn Goldseeker Motel  
43-49 High St, Wedderburn.**

All welcome - Free Admission

Please RSVP for catering: 54943542  
or via website contact: [wedderburncmn.org](http://wedderburncmn.org)

## Nest boxes at Wedderburn

The Men's Shed at Wedderburn in partnership with the Loddon Plains Landcare Network, the WCMN and students from Wedderburn College have now finished constructing and placing nest boxes in several sites around the Wedderburn area. It is now envisioned that the locations of the boxes be marked by means of GPS and that monitoring of activity at the nest boxes begin as soon as practicable. The WCMN will be looking to source a *camera on a pole* possibly from Parks Victoria or the North Central Catchment Management Authority as the tool of choice for such monitoring. The photographs, aside, show a nest box and one of the locations where several boxes have been located – an area behind Wedderburn College. The photographs were taken by year 9 student Matt Lockhart and show that one box and the bark of the tree to which it is attached has already received some attention.



## Notices

- Please note that you can receive this newsletter by email, contact Michael Moore as below, and all newsletters are available for reading on the WCMN website.
- The Friends of Kooyoora will be running a photographic day at Melville Caves on the 19<sup>th</sup> October 2014 – see Friends of Kooyoora website for details.

**Please note that 2013-14 membership fees are now due.**  
**Individual membership \$5      Family membership \$10.**  
**Payment may be sent to:**  
**WCMN Treasurer**  
**PO Box 65**  
**Wedderburn 3518**  
**Victoria**

**The WCMN** is a network including interested individuals and both public and private land managers who come together to promote a shared aim. That shared aim is to work with the community in general to promote profitable, productive and sustainable human enterprises while conserving and enhancing the biodiversity of their area of interest.

For further information concerning any items in this newsletter or other aspects of the WCMN contact **WCMN President, Michael Moore – 54943542**

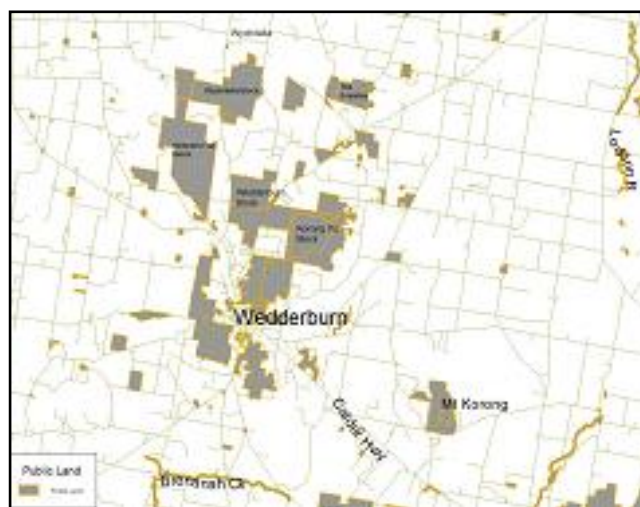
### Website addresses

[www.wedderburncmn.org](http://www.wedderburncmn.org)

[www.lpln.org](http://www.lpln.org).

LPLN- Loddon Plains Landcare Network

‘Proudly supported by the Victorian Government Landcare Grants Program’.



The WCMN Area of Interest



**NORTH CENTRAL**  
Catchment Management Authority  
*Connecting Rivers, Landscapes, People*



CARING  
FOR  
OUR  
COUNTRY