



Cortland Rural Cemetery

110 TOMPKINS STREET • CORTLAND, NEW YORK 13045

SPRING 2008

THE CORTLAND RURAL CEMETERY NEEDS YOUR HELP

HERE'S WHY:

• THE PROBLEM IN BRIEF

One of the historic jewels in the Crown City of Cortland is the Cortland Rural Cemetery. Founded in 1853, the Cemetery houses the remains of 18,000 people in peace and dignity. A worthier and more beautiful site could hardly be found.

The slow financial erosion that continuous monetary inflation inflicts on all stable institutions, coupled with galloping changes in American burial practices, has brought this local treasure to a serious challenge. It threatens the very luster that has made it such an imposing community asset.

All cemeteries have permanent maintenance funds designed to provide for the perpetual care of the cemetery grounds. The inflation-eaten permanent maintenance fund no longer covers the rising costs of maintenance. The problem for today's

historic cemeteries is clear. They experience a growing cost of maintenance for those older sections sold years ago for what is very little money in today's dollars. The goal for cemeteries is a trusted permanent maintenance fund that will generate enough revenue to maintain the full cemetery in perpetuity; however, the reality is that most cemeteries use a large portion of their current operating revenues to cover these costs. The Cortland Rural Cemetery is a prime example. What gives the Cemetery its beauty—those hillsides, the many monuments, and the sculpted roads—are the very reasons for the high cost of maintenance.

As a result, the Board of Trustees of the Cortland Rural Cemetery and its associated Foundation are asking the community to contribute to an endowment fund that will supplement the monies available for permanent maintenance. Several public-spirited community members have already stepped forward to promise substantial gifts to initiate the endowment.



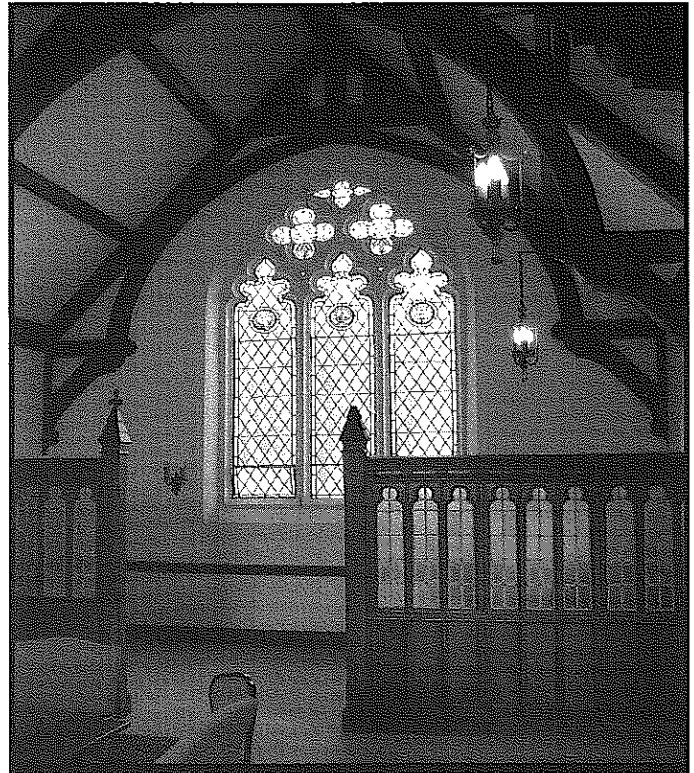
• THE CEMETERY PAST

In early winter 1853, an association was formed to purchase land and establish a cemetery on the edge of Cortland. Beginning with twelve acres and initially accepting reburials of over 800 early settlers from other locations, the Cortland Rural Cemetery now accommodates in its fifty acres a population equal to the City of Cortland. Over the last century and a half, the Cemetery's gentle hills and lush greenery have respected the original concept of the "rural" cemetery that became popular in the mid-1800s. This concept values openness

and rusticity, welcoming families to visit and to remember those who have passed on.

Ours is an historic cemetery where monuments honor the humble as well as the great. Visitors may see the graves of the last upstate Governor of New York, Nathan Miller; of the veterans of all American wars including Brigadier-General Joseph Reynolds who served in the War of 1812 and Colonel Andrew J. Grover who died at Gettysburg; and of Dr. Julia Spalding who arrived in Cortland in 1883 as one of the nation's earliest woman doctors.

In its early history, lot owners were the caretakers of their family plots. As descendants dispersed from the community, and made that practice no longer practical, the Cemetery imposed annual fees for maintenance. After the turn of the century, the trustees created an endowment fund for perpetual care of lots. Today when you walk through the cemetery you will find monuments marked with "perpetual care" or "endowed" on the stone. These were early contributors to the endowment fund.



The intimate 1922 chapel is available for memorial services or visitations. Seating can be arranged to accommodate sixty people.

Recently the Cemetery has added a stately mausoleum. The mausoleum offers the dignity and security of above-ground burials. It is accessible from the cemetery's historic chapel as well as from a handsome separate entrance. The mausoleum affords year-round visitation in a quiet and inspirational setting for remembrance of loved ones.

The mausoleum is constructed of Italian marble and steel-reinforced concrete. Each crypt is fully ventilated, clean, and dry to insure lasting protection against time and the elements.

For those who wish to preserve the cremated remains of their family members and friends in a respectful setting conducive to contemplation and remembrance, the Cortland Rural Cemetery offers several dedicated locations in its chapel. Urns may be secured in niches behind oak doors or displayed in glass-fronted cabinets. Additional memorialization can be in the form of photos visible through the glass front niches.

Responding to the Cemetery's financial needs, the Board of Trustees agreed last year to lease to SUNY Cortland an unused field for use as a parking lot. The rental income helps defray some maintenance costs but is insufficient to keep the roads and grounds in proper condition.

Even with these efforts, income falls short of providing enough money for maintenance of our historic Cemetery.



• TODAY

Plots remain available for new interments. Beautiful, peaceful and inspirational settings with perpetual care are available throughout the cemetery for single or multiple graves, cremation burials, family plots, and private estate mausoleums.

An imposing hillside has been set aside for veterans and spouses of veterans. In agreement with Temple Brith Sholom, two sections are reserved for Jewish burials.

• THE FOUNDATION

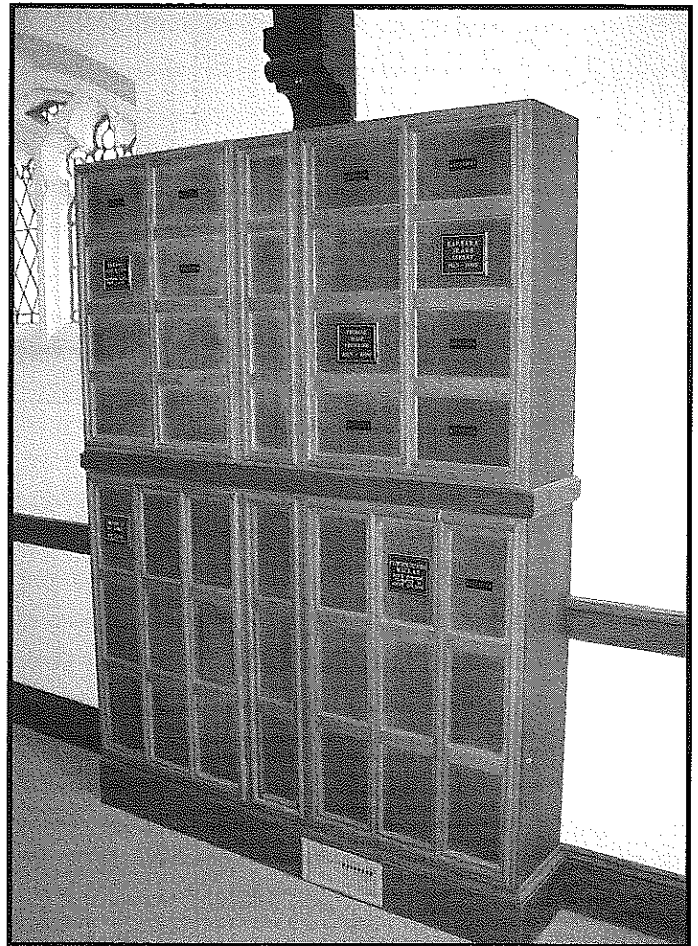
Created in 1996 the Cortland Rural Cemetery Foundation accepts gifts and bequests to benefit the Cemetery. The Foundation is operated under the direction of a Board made up of nine volunteers who provide stewardship for the funds received and leadership for seeking additional support.

The Cemetery's Board of Trustees asked the Foundation to undertake a special, limited fund-raising campaign to create a permanent Endowment Fund to supplement the cemetery's permanent maintenance fund. The Foundation accepted the challenge in the summer of 2007.

• THE CAMPAIGN

The Foundation set a goal of \$400,000 to be raised over a three-year period. You are being asked to consider making a donation to assist this effort. Amounts pledged may be paid over a two- or three-year period.

The campaign is being conducted by the volunteers who are members of the Cortland Rural Cemetery Foundation. All proceeds (except for the cost of the campaign in the form of secretarial assistance, postage, and materials) will be placed in the Foundation's endowment fund.



The Foundation is a not-for-profit Section 501(c)(3) charitable public foundation registered with New York State and the Internal Revenue Service. Gifts are tax deductible.

OUR REQUEST

We who serve on the Cemetery's Boards (our names are on the next page) ask that you give our request your thoughtful consideration. We hope that we have made our case in a way that will convince you of the Cemetery's need for your help.

An envelope is provided for your convenience.

And if you would like to be kept informed of developments at this local historical treasure, indicate your desire on the envelope and the Cemetery's periodic newsletter will be sent to you.

Cortland Rural Cemetery Foundation Directors

Mr. Robert C. Howe, *President*

Mrs. Deborah Geibel, *Vice-President*

Dr. James M. Clark, *Secretary*

Mrs. Elizabeth S. Spaulding, *Treasurer*

Mrs. Sandra S. Baden

Mrs. Carol Brewer Fenton

Dr. R. Paul Higgins, Jr.

Mrs. Dianne Robinson

Mrs. Jean Seligmann

Cortland Rural Cemetery Trustees

Mr. James Place, *President*

Mrs. Christine Buck, *Vice-President*

Mrs. Helen Hart, *Secretary*

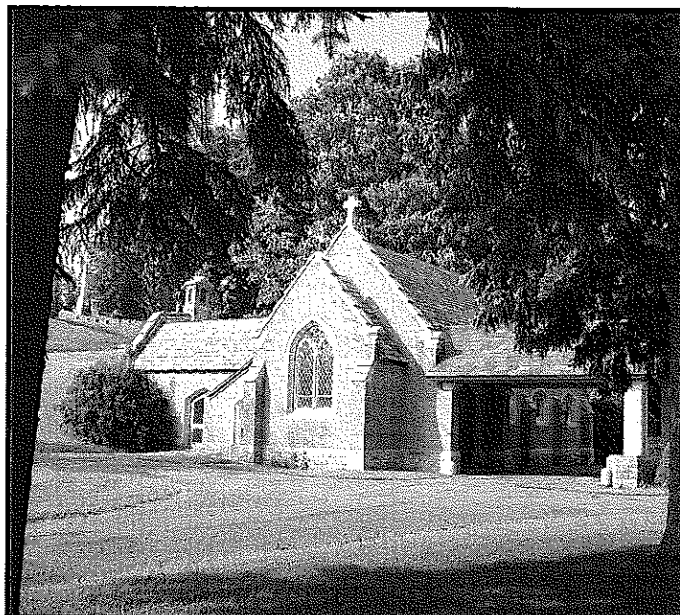
Mrs. Karin A. Burgess, *Treasurer*

Mr. Ronald Lyman

Ms. Patricia Place

Mr. Mark Suben

Mrs. Angela Thurlow



Cemetery Chapel
Public Mausoleum and Cremation Niches



Cortland Rural Cemetery Foundation

Post Office Box 288

Cortland, New York 13045-0288