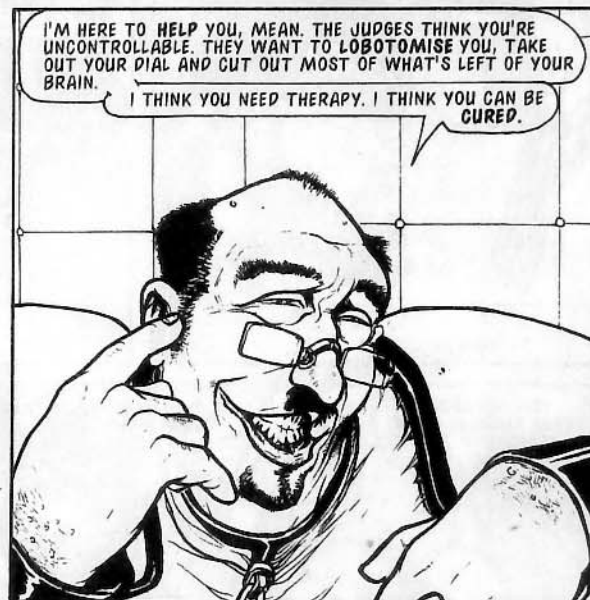
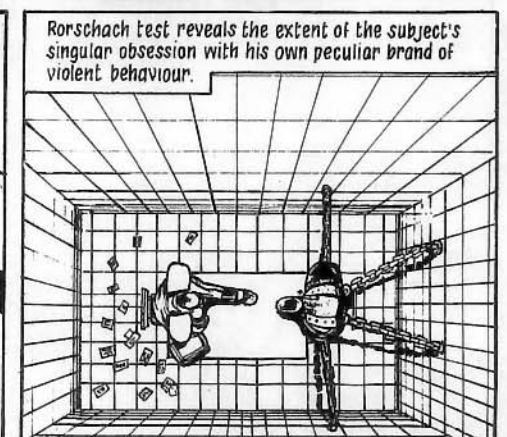


MEAN MACHINE

in PSYCHO ANALYSIS





"PA WAS A BAD 'UN! WHEN I WAS STILL A YOUNG CRITTER, HE TOOK ME INTO TEXAS CITY AN' GOT ME FIXED UP WITH MY DIAL AN' ARM. SAID I WASN'T MEAN ENOUGH LIKE I WAS. . .

"SOMETIMES HE'D WHIP US AN' CHAIN US UP, THEN SET THE PAWGS ON US. JES' TA SEE IF WE WAS MEAN ENOUGH YET.

"OTHER TIMES, HE'D HAVE US RUN AROUND THE YARD WHILE HE SAT ON THE FRONT PORCH AN' TOOK POTSHOTS AT US. COMBAT TRAINING, HE CALLED IT. . .

"IT WAS 'BOUT THAT TIME FINK WENT OFF TA LIVE BY HISSELF IN A HOLE. WE'S ALL THOUGHT HE WISN'T UP TA BEIN' A REAL ANGEL, BUT PA SAID FINK WAS SPECIAL. SENSITIVE, LIKE. . ."

Abusive father. Classic case of severe childhood trauma. Hatred of father obviously displaced onto outside world in adult life.

"YUP, THEM'S WAS THE HAPPIEST DAYS O' MY LIFE! I GOT'S PA TA THANK FOR EVERYTHING I IS TODAY!"

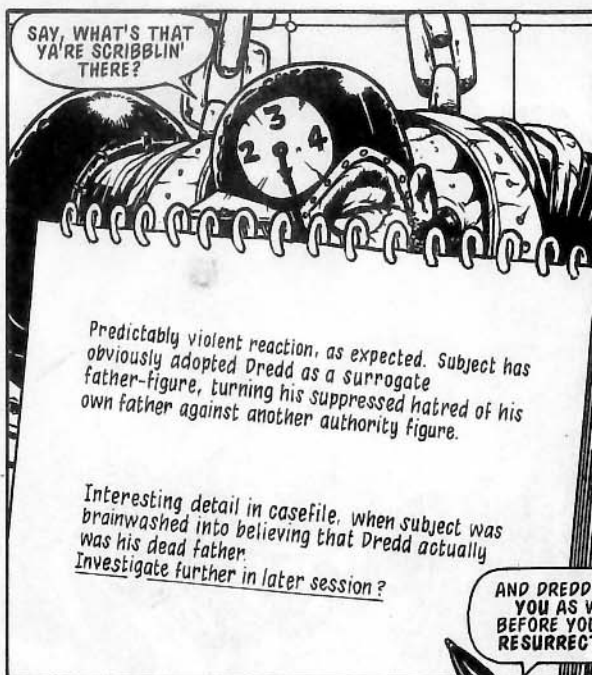
Abusive father. Classic case of severe childhood trauma. Hatred of father obviously displaced onto outside world in adult life.

Try a different tack. DREDD?

WHAT ABOUT JUDGE DREDD? HE KILLED YOUR ENTIRE FAMILY, DIDN'T HE?

DREDDY. . . THAT BASTICH! HE'S GONNA GET WHAT'S A-COMIN' TO HIM ONE O' THESE DAYS, DON'T YA WORRY!

I'M GONNA GET A WHOLE NEW SETTIN' ON MY DIAL - NUMBER FIVE - JES' SPECIAL FER HIM!



SAY, WHAT'S THAT
YA'RE SCRIBBLIN'
THERE?

Predictably violent reaction, as expected. Subject has obviously adopted Dredd as a surrogate father-figure, turning his suppressed hatred of his own father against another authority figure.

Interesting detail in casefile, when subject was brainwashed into believing that Dredd actually was his dead father.
Investigate further in later session?

AND DREDD KILLED
YOU AS WELL,
BEFORE YOU WERE
RESURRECTED...

"THAT BALDY BIRD-BOY KID, YA
MEAN? HE WAS ALL PA'S IDEA - NEVER
SAW MUCH SENSE IN IT M'SELF..."



'Resurrection Psychology/Insights
from Beyond The Grave' -
award-winning stuff!!



BUT YOU WERE
DEAD, AND NOW
YOU'RE ALIVE AGAIN!
THAT MUST HAVE
HAD SOME EFFECT
ON YOU!



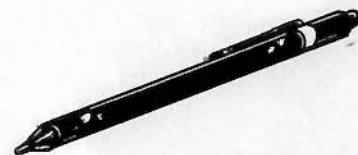
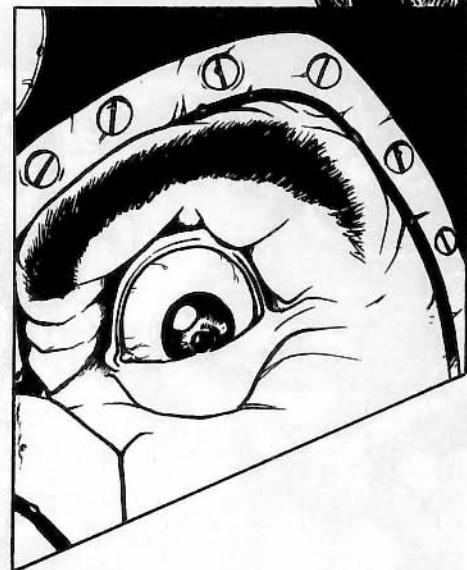
DON'T RIGHTLY REMEMBER.
NEVER GIVEN ME BEIN' DEAD
MUCH THOUGHT BEFORE...

'Resurrection Psychology/Insights
from Beyond The Grave'
award-winning stuff!!



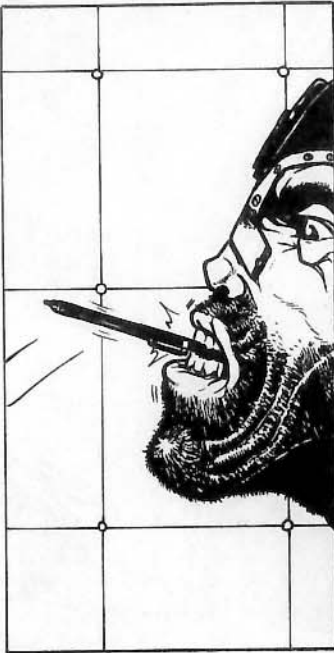
THANK YOU, MEAN - I THINK WE'VE
MADE REAL PROGRESS TODAY.
I'LL CALL THE JUDGE-WARDENS
AND HAVE THEM TAKE YOU BACK
TO YOUR CELL...

Subject continues to show hostility
and lack of cooperation...



He is obviously of extremely low intelligence
but also displays aspects of low animal cunning.

However, despite these occasional glimmers
of intelligence and his obvious hostility towards
the psychoanalytical process, I see no need to
review the security measures for our further
sessions together...



YA GOT THE MEAN MACHINE
A-COMIN' AT YA ON THREE, YA
PASTY-FACED FOUR-EYED GEEK!



WHUUUMP!

ANGEL M.
10012



GODDARNED SHRINKS...
AIN'T NOBODY TALKS
'BOUT MY KIN LIKE
THAT!

the end