

Recycle an old plastic container to create this fantastic Bowl.
Can also be used as a plant pot for the garden.

Designed by Birdy Heywood



I have used acrylic paint to decorate the bowl.



Materials you will need: Weatherproof Wood Adhesive. Filler that is suitable for outdoors. For this project I have used Gauze swabs because I like the texture. Black powder colour pigment. To be mixed with the wood glue and filler.



1. You will also need a plastic bowl to cover. **2.** Mix some of the colour pigment with the wood glue in a plastic container. It may appear grey but when dry it will darken. Using a nice stiff paintbrush, paint over the base of the bowl. **3.** Open the gauze and place over the top.



4.



5.



6.

4. Dab the brush over the gauze so that the liquid seeps through. Push the gauze with the brush to create more texture. 5. Add another piece of gauze and repeat the procedure. 6. Work your way to the base.



7.



8.



9.

7. I make most of my ideas up as I go along and decided here, to fold a little over the rim. 8. This is something I had never tried before. I mixed up some wood glue black powder and the filler to a nice thick past in the centre of the bowl. 9. I used the paintbrush for this.



10.

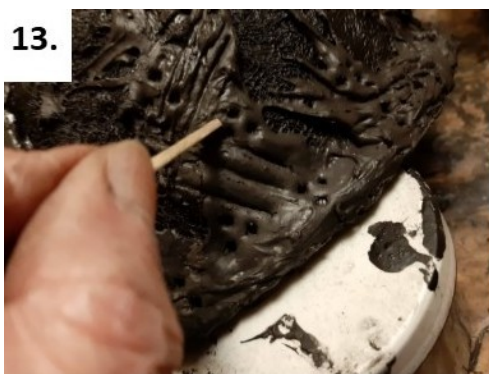


11.



12.

10. I didn't know if this would work but it did! I used the paintbrush to paint a thick layer from the base of the bowl to the brim and over the top. 11. I like the pattern it makes. 12. I mixed up more paste and created a sort of hap hazard pattern on the outside, leaving gaps where the gauze still showed. The important thing is, to ensure every part of the plastic bowl is covered either by the gauze or the paste.



13.



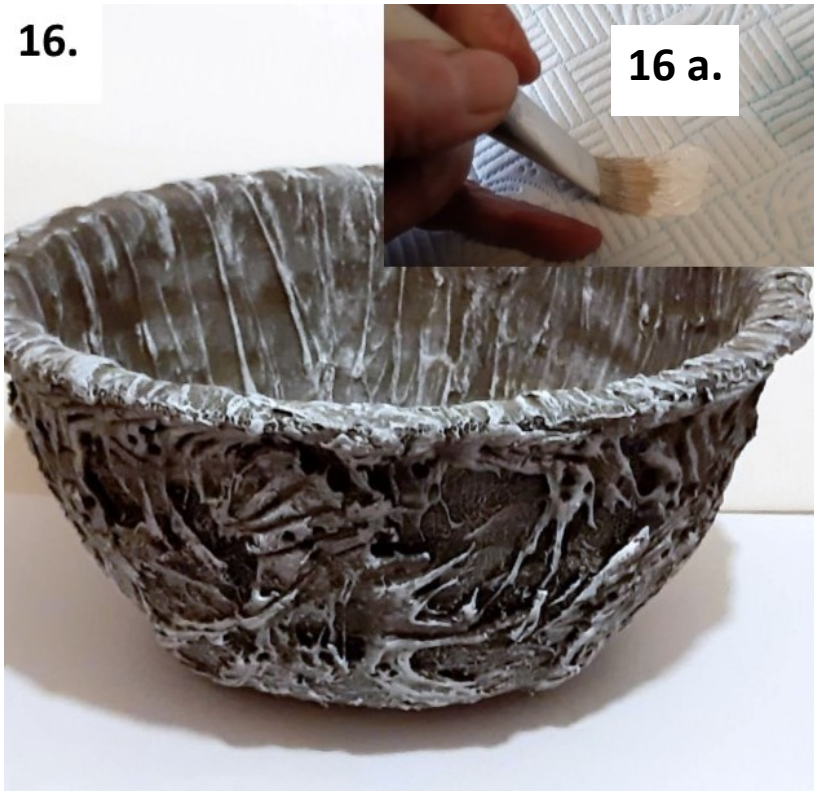
14.



15.

13. Using a matchstick I created groups of three little indents. I like threes! As I poked it three times, I said to myself "Love, Peace, Unity." Silly I know but. Hey, that's me! 14. I marked other bits with a spatula to create little lines. 15. Now comes the exciting bit! After I had allowed the bowl to dry, it was time to add colour. Because the base colour is black, other colour would not show up brightly. Dry brushing white paint over the whole bowl is needed. Dry brushing ensures that only part of it become lighter and we still retain a shadow. More about dry brushing on the next page.

16.



16 a.

17.

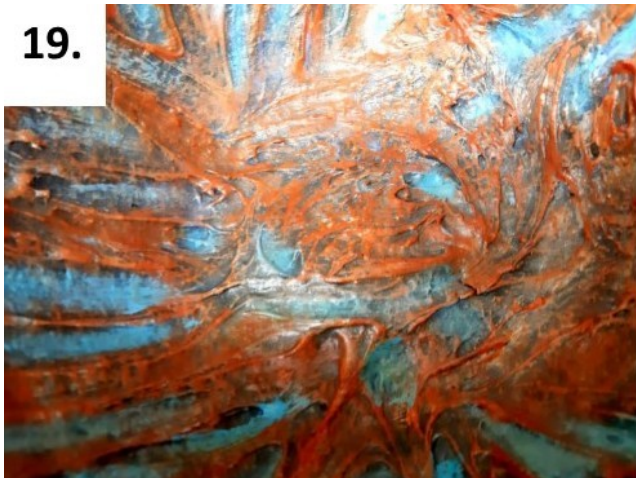


18.



16 a. Dry brushing is where the brush is loaded with white acrylic paint then nearly all of it removed on a kitchen towel. If you loaded it with paint it would mean you would lose all those lovely shadows, cracks and crevices. **17.** I left a bit more brown paint on the brush for this stage and painted over the inside and outside of the bowl. **18.** I mixed blue and white paint together to create this gorgeous turquoise shade. It was great fun filling in all the gaps where the gauze was showing.

19.



20.



19. I painted the gaps on the inside of the bowl with the turquoise paint too. **20.** I have lots of different types of varnish in my craft stash. I chose a water based gloss varnish and applied it to the inside and outside of the bowl. As I mentioned, I make a lot of what I do up as I go along. Experiment!



21.

22

23.

24.



21. A smaller bowl created over a plastic dish that yummy trifle came in. I left this one black and white. **22.** I decorated this little bowl with pistachio shells. **23.** A plastic pot that once contained delicious soup. Covered all over with medical swabs and a dash of the gluey paste. I also added matchsticks for decoration. Apply whilst the glue is still wet. **24.** Medical swabs they are super absorbent and easy to apply.

www.birdyheywood.com

Email: birdsdragons@gmail.com