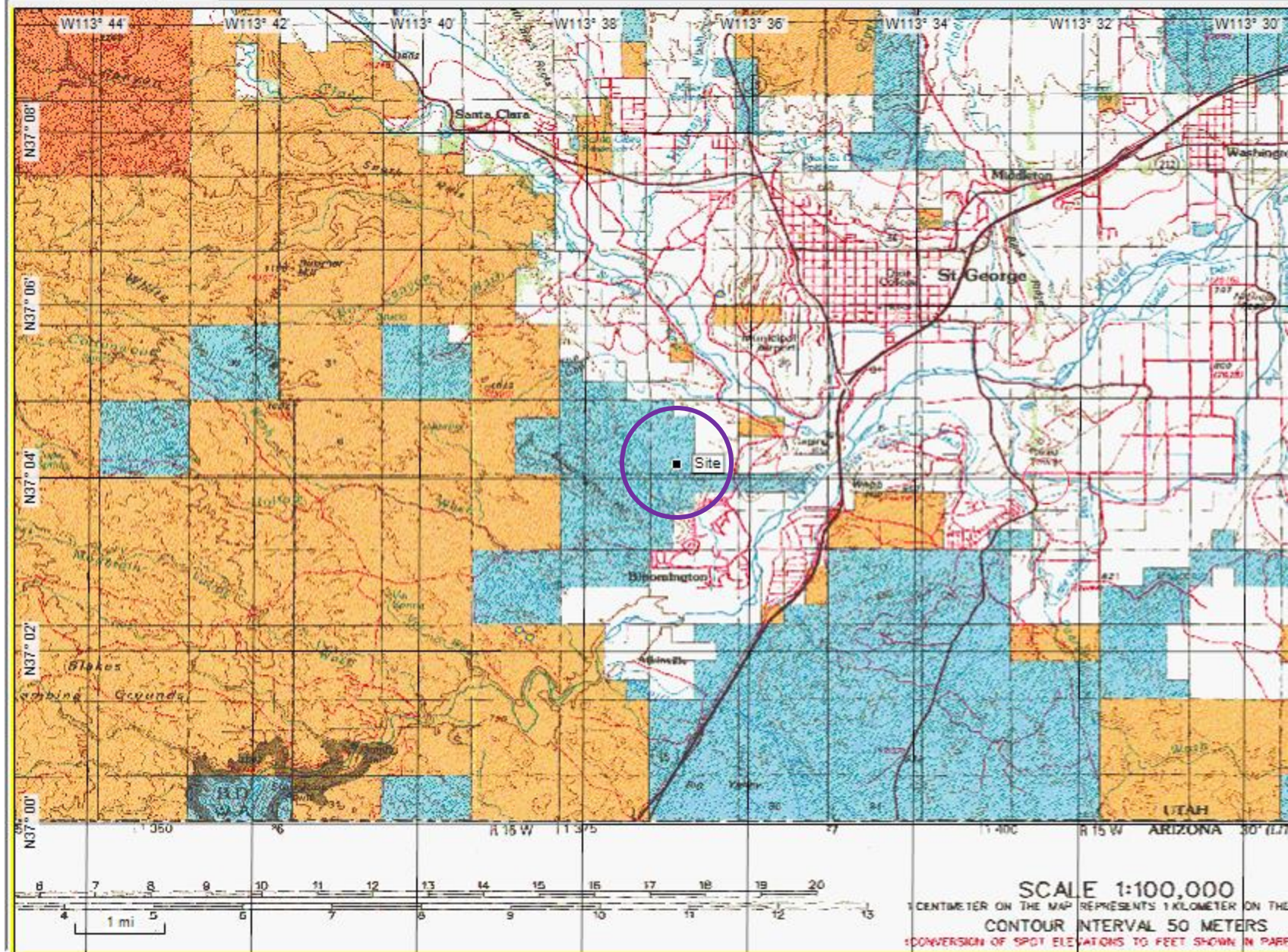


Tonaquint Terrace Glyphs

April 3, 2013



04/03/2013 12:32



Tonaquint Terrace April 3, 2013

Landscape view



The rock enclosure



Tonaquint Terrace April 3, 2013

**Light dagger enters the slot
at 12:39 p.m. (MDST).**



**Light dagger reaches bottom
edge of vertical face with glyphs.**



Tonaquint Terrace April 3, 2013

Circular glyph is in completely
in shadow 12:40 p.m. (MDST)



Closer view



Tonaquint Terrace April 3, 2013

As the main light moves up, a secondary shadow crosses the right side of the spiral glyph.

By 12:54 p.m. the secondary shadow moves to the right.



Tonaquint Terrace April 3, 2013

**When the secondary shadow passes
the right side of the circle glyph ...**



**the shadow crosses a human figure
to the right deeper in the slot.**



Tonaquint Terrace April 3, 2013

The secondary shadow crosses the human figure.



Further in the slot looks like another figure completely in the shadow.



Tonaquint Terrace April 3, 2013

Close up of deeply etched figure



Secondary shadow passes to right of circle glyph.



Tonaquint Terrace April 3, 2013

Vertical facing glyphs are in full light by 1:05 p.m.



Human figure is in shadow.



Tonaquint Terrace April 3, 2013

Primary shadow moves
up on glyph at 1:11 p.m.



Spiral is 17.5 inches
across and vertical.



Tonaquint Terrace April 3, 2013

Shadow cross lower portion.

**Shadow reaches center
at 1:23 p.m.**



Tonaquint Terrace April 3, 2013

Shadow crosses center and shadow reveals human form in light to right.



Shadow crosses center 1:25 p.m.



Tonaquint Terrace April 3, 2013

Shadow covers center.



Shadow moves to upper portion.



Tonaquint Terrace April 3, 2013

Shadow along vertical glyphs moves up and down exposing forms.

As shadow crosses top of circle, the shadow exposes glyphs along the vertical face.



Tonaquint Terrace April 3, 2013

Shadow move across top.



By 1:33 p.m. shadow reaches top.



Tonaquint Terrace April 3, 2013

Shadow covers top part.



Shadow curves perfectly around top edge of circle.



Tonaquint Terrace April 3, 2013

**Shadow covers
entire spiral glyph.**



**View at 1:37 p.m. light dagger is
on top edge of vertical panel.**

