

# The Bible Students Retirement Centers, Inc.

Fairview, OR • SPRING 2018

## Great Apartment Available

### OUR MOST POPULAR STYLE

One of our larger apartments is available and ready for immediate occupancy. The last two times this style was available, brethren whose names were on our waiting list snatched the units up before we could advertise to the brotherhood at large. Currently, this is not the case. Therefore, we are happy to share with you this wonderful opportunity. This spacious two-bedroom end unit is 1,376 sq. ft. (including a one-car attached garage). It is all on one level, unfurnished, has a living room/dining room combination and two bathrooms. The vaulted ceiling and high windows give it a bright and open feel. The fully equipped kitchen comes with a stove, refrigerator and dishwasher. A separate laundry room and patio round out the features in this home. It is freshly painted and has new carpeting. It is perfect for independent living. Rent: \$947/month.

All of the BSRC units are in a gated community, which includes a quarter-mile walking path. The Main House sits at the center of the property. It is a gathering place and center of activity. There we host five studies per



Continued on page 4

## Greetings from some of your Brethren at the BSRC...



Lois Austin  
Since 2006,  
from California



Richard and Shirley Evans  
Since 2015, from Washington



Stephanie and Jim Tower, Since 2016, from Oregon



Judy Larson, Since 2009  
from Oregon



Bob Wilson, Since 2010  
from California





# *We Would Like to Our New*



## **Calendar of Events**

### **ECCLESIA MEETINGS and RESIDENT BIBLE STUDIES**

Sunday, Tuesday, Wednesday,  
Thursday, Friday, sometimes Saturday

### **WEEKLY EVENTS**

Cards and Consolation Mailings  
Harmony Hour Study – Informal study based on daily devotions  
Sisters' Meeting – now studying Joshua

### **EVENTS**

Lunch outing (one Saturday per month) –  
frequently paid for by a special donation

Boccelli's Italian, Gresham, March

Pie vs. Pie, Gresham, April

Beaches, May

Residents' Meeting, monthly on a Wednesday

Hymn Singing in the Dining Room, one Saturday a month

Witness Activity, mailing efforts

### **SPECIAL EVENTS**

Pre-Memorial Organ Music, Lorain Trzyna, BSRC Chapel

Two Wednesdays before the Memorial

Devotional Music Program: Ensembles, Musicians, Hymn-singing;

New Organ showcased, Saturday, February 24

Fellowship Lunch provided by the Board, Saturday, February 24

Conventions broadcast on BSRC closed circuit TV channel

Associated Bible Students of Portland Guest Speaker

Rick Evans, Sunday, January 14

Thurs.-Sat., February 22-24 Board Members on site for

February meeting, Open Session & Update from the Board

Christmas Day Prime Rib Dinner

**W**hen our meeting hall/chapel was first built over 30 years ago we received a donation of a used organ. It served us well for many years. That original organ was electronic and time was not kind to the wires, transistors and internal parts. Parts were no longer available and after being used for over 50 years it needed to be replaced.

### **GENEROSITY ONCE AGAIN**

Once again we were the beneficiaries of the generosity of a small group of our brethren (6 individuals) who donated funds specifically for the new organ. The organ we now have was almost entirely created from USED AND RECYCLED PARTS. The bits and pieces, the pipes and keyboards were literally lying around in basements and storerooms.

### **A SPECIAL KIND OF ORGAN**

Our new organ is a small, classical-style pipe organ. The sounds come from pipes, not electronic sound imitators and speakers. These pipes make a sound and you might even feel the physical vibrations of those sounds. We read in the Lord's Word of praise accompanied by pipes, organs, cymbals, horns – all making a joyful noise.



# Introduce You to Pipe Organ



## PIPES ARE IN THE ATTIC

Our recycled organ has two manual keyboards and a set of foot pedals. The pipes are in the attic. Four of our brethren remodeled the attic and created a room for the pipes. We have five sets of pipes. Like a traditional organ from the 1500's the pipes can be made to create different sounds. For example, we have one set of pipes that sounds like a flute. Another set sounds like a stringed instrument.

The organist controls which pipes will play by pulling out STOPS. Hence the expression: "Pulling out all the stops." The organist also controls the volume. Depending on what the organist does, the organ can be either very, very soft or quite loud.

## AN INSTRUMENT FOR ALL TO PLAY

The organ is simple to play. In our local ecclesia environment there are 12 brothers and sisters who are being introduced to the organ and who will be part of the organist team. Most would say that it is actually easier to play than a piano.

## THANK YOU

The money for this instrument was donated specifically for the organ project. The money did not come out of Retirement Center funds. Thank you to all who helped and supported the project.

## Devotional Service Bible Students Retirement Center

FEBRUARY 24, 2018

Retirement Center Chapel

<b>OPENING</b>	Congregational Singing	"Savior Direct Me"
		"Surely the Presence of the Lord"
		"Alas and Did My Savior Bleed"
		"A Little While"
<b>SOLO</b>	Br. MICHAEL	"In The Presence of the Lord"
<b>POEM</b>	Sr. ROSEMARY (reading)	"Thanksgiving"
<b>GROUP</b>	WOMENS ENSEMBLE	"Sweet Hour of Prayer"
		"Be Thou Our Guide" (Sibelius)
<b>POEM</b>	Sr. ROSEMARY (reading)	"A Saint"
<b>SOLO</b>	Sr. LORAIN	"How Can I Keep from Singing"
	Congregational Singing	"Lamp of My Feet"
		"I Will Sing the Wondrous Story"
	MENS GROUP	"Precious Lord"
		"Rock of Ages"
<b>CLOSING SEQUENCE</b>	Congregational Singing	"To God Be The Glory"
		"Adoration" French melody
		"Thine Be The Glory" Handel
		"Call To Worship"
		"Whispering Hope"
		"Endless Song" J Brahms
		"I'm Just A Pilgrim"

## CLOSING PRAYER







## Shirley Bruce

1922-2018

As our newsletter was going to press we learned that our dear Sister Shirley Bruce had finished her course. She died peacefully in her unit at the Center accompanied by her family. We plan to have a more complete article about her in our next issue.

## Construction Update



**W**e reported in our last newsletter that we would embark on a major improvement of the second floor decking of two of our larger buildings. Buildings F and C both have second floors and their decks are the ones we plan to improve. We also wanted to consider replacing the wooden stairs with steel stairs but due to the complexity of combining stairs replacements with the deck upgrades, the stairs have been placed on hold until a later date.

Over the past 30 years we have made bit by bit repairs. We decided last Fall that it was time for some major changes. As we mentioned in our last report we have hired an architect to guide us through this process. Plans have been drawn with the supervision and input of our Construction Committee and we are now ready to put the project out for construction bids.

Our goal is to have the significant part of the remodel completed before next Winter. We will keep you posted. So far we like the plans and the thought going into this effort.



Michael R. Costelli  
Planning &  
Construction Chair

## Great Apartment

Continued from page 1

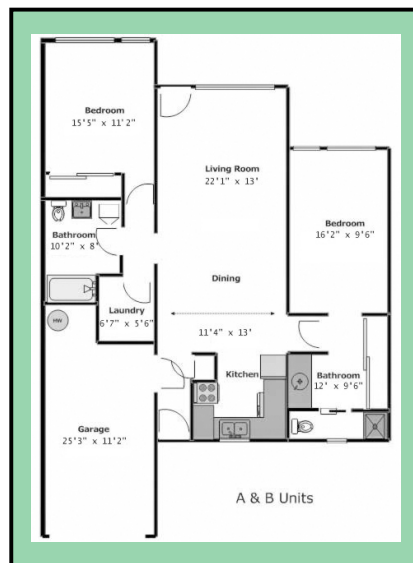
week, noontime meals, hymn singing, holiday gatherings and many other opportunities for fellowship.

If you might be interested, we would like to invite you to come to the Center for a trial visit. You may come for up to 2 weeks. The purpose of this visit is for you to get a good feel of what life is like at the Center, try out the unit

and decide if it is right for you. The lodging for the trial visit will be at no cost. We will also include a free noon meal during your stay on the days it is served in the Main House.

**For more information or to schedule a visit**

**Contact  
Admissions Chair  
at 908-756-4954**



Dawn Shallieu  
Admissions Chair

## Board of Directors Election

An elected Board of nine Directors manages the Retirement Center. The Residents living at the Center elect one Director and the BSRC Membership elects the other eight. The Director elected by the Residents serves a one-year term. The Directors elected by the Membership serve a three-year term and those eight Directors serve staggered terms.

Each year the Residents nominate and vote for their Resident Director. Janet Wojcik was elected as the new Director for the Residents.

Also this spring, the BSRC Membership was responsible for filling two upcoming vacant Director positions. There were four nominees: Nannette Nekora (California), Kathy Rosenberg (Connecticut), Lana Turner (Colorado) and Tami Wesol (New Mexico). One hundred and eight-two Members participated in the election. We appreciate those who allowed their names to be entered in nomination and are willing to serve the Lord in this manner.

Nannette Nekora and Tami Wesol received a majority of votes and will each serve a three-year term on the Board.

**Call us with your questions & comments • BSRC • 503-661-7045**