

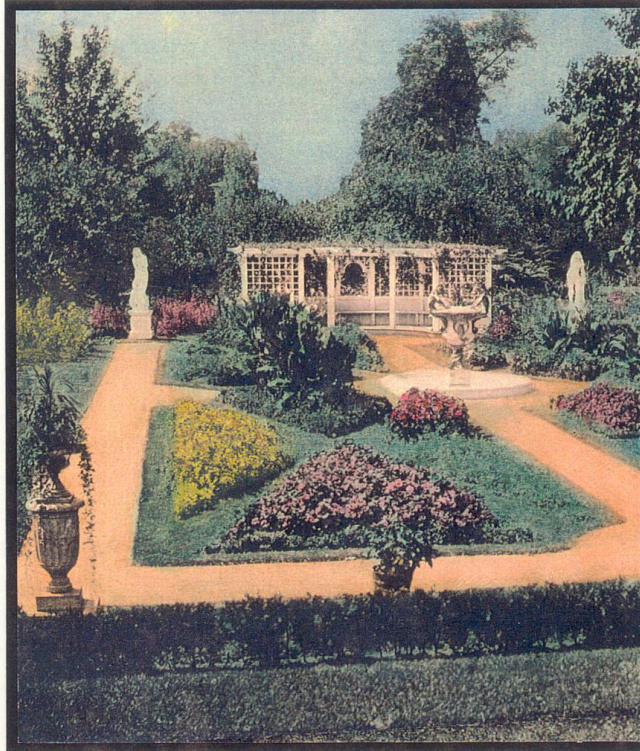
The Fulford Landscape

Ontario Heritage Conference
June 17, 2022

Romas Bubelis, OAA

A PIECE OF PARADISE

THE ORIGINAL GARDENS AND GROUNDS OF FULFORD PLACE

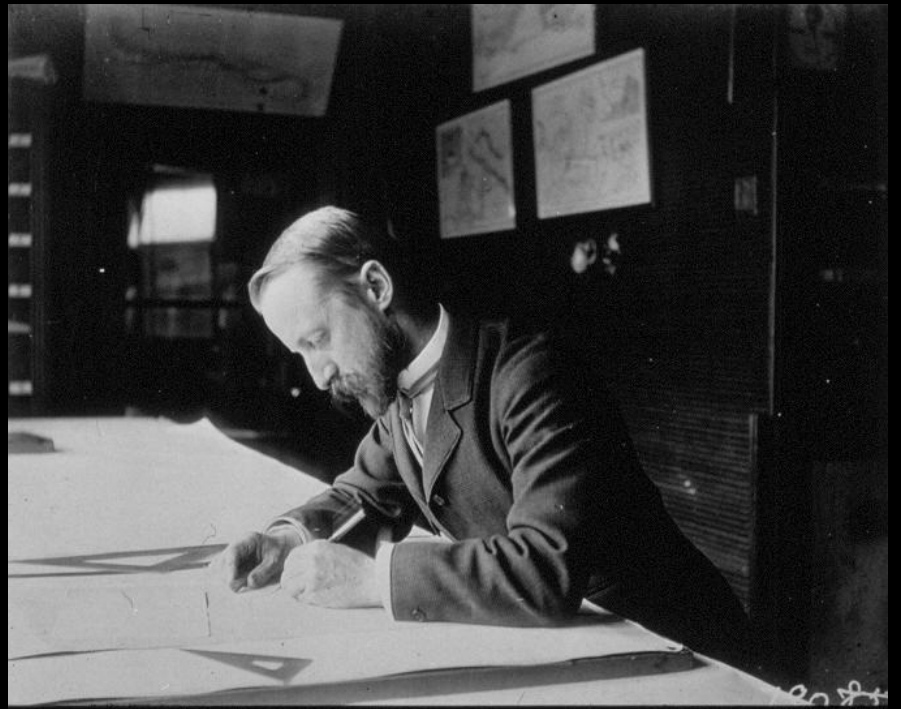
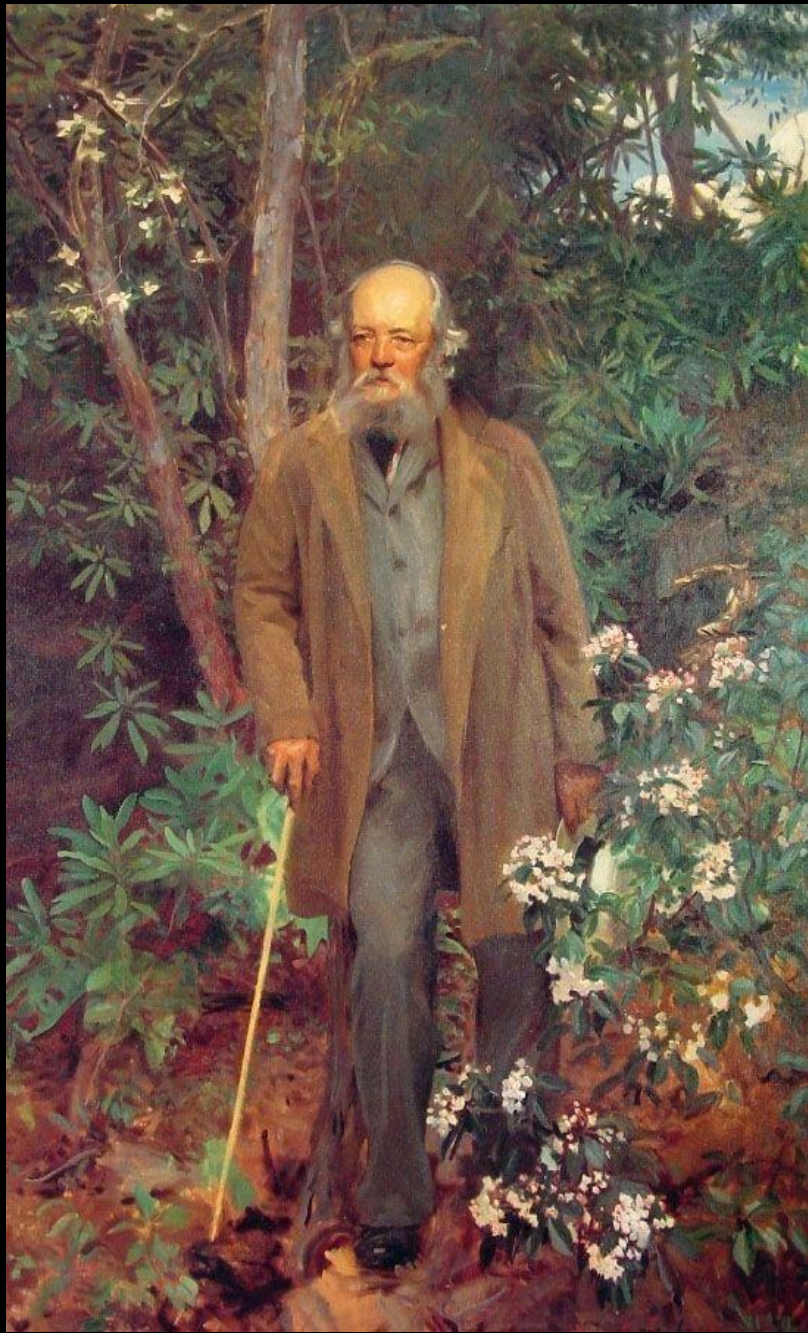


Ontario Heritage Foundation
FULFORD PLACE

Brockville, Ontario

OHT with the support of

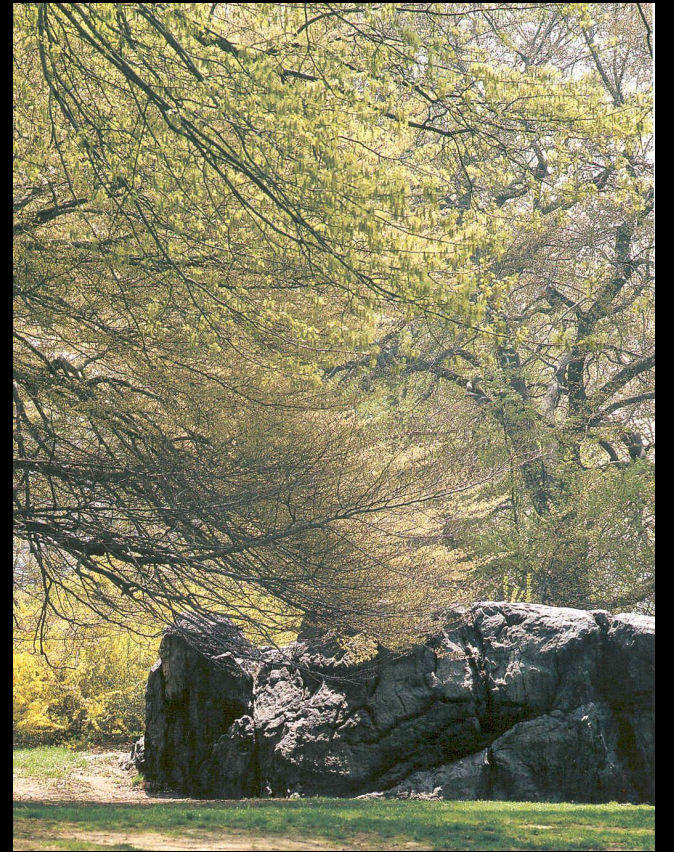
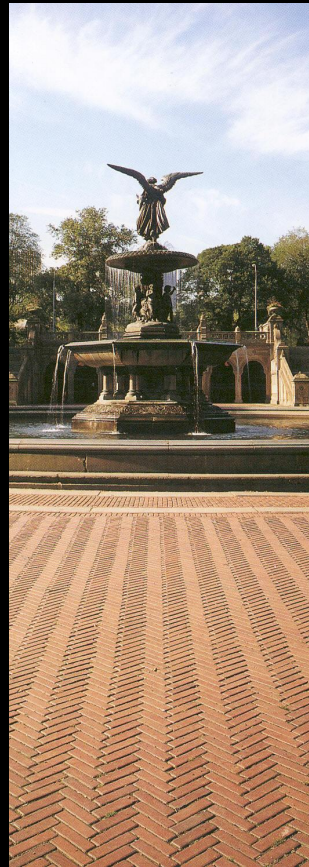
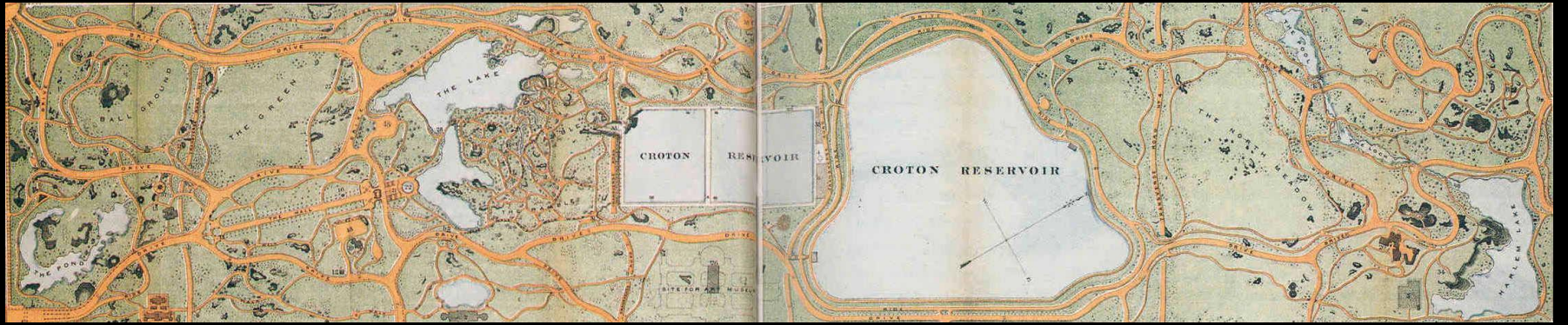
- Chalkers Foundation
- Dalglish Family Foundation
- Donner Canadian Foundation
- Friends of Fulford Place Association
- Garfield Weston Foundation
- Sifton Foundation
- Ministry of Heritage, Sport, Tourism and Culture
- Parks Canada National Cost-sharing Program for Heritage Places

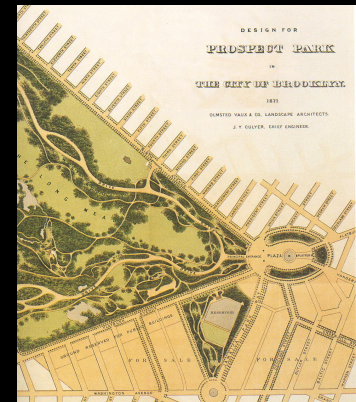
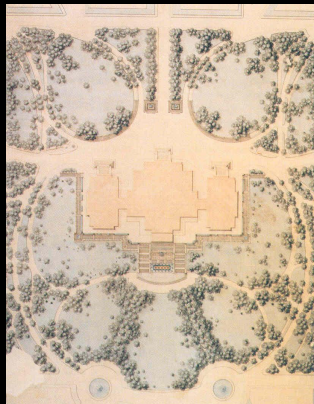
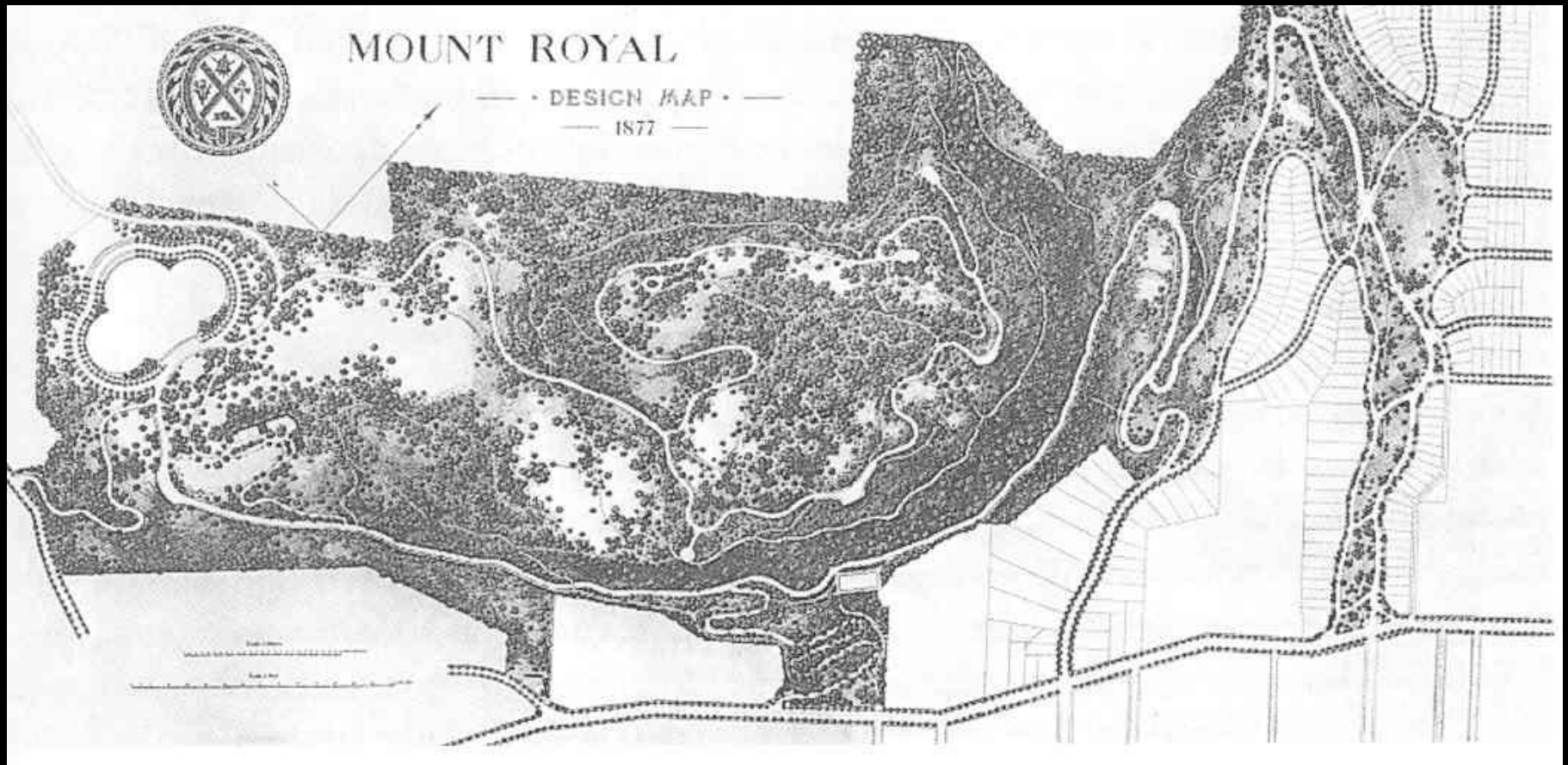


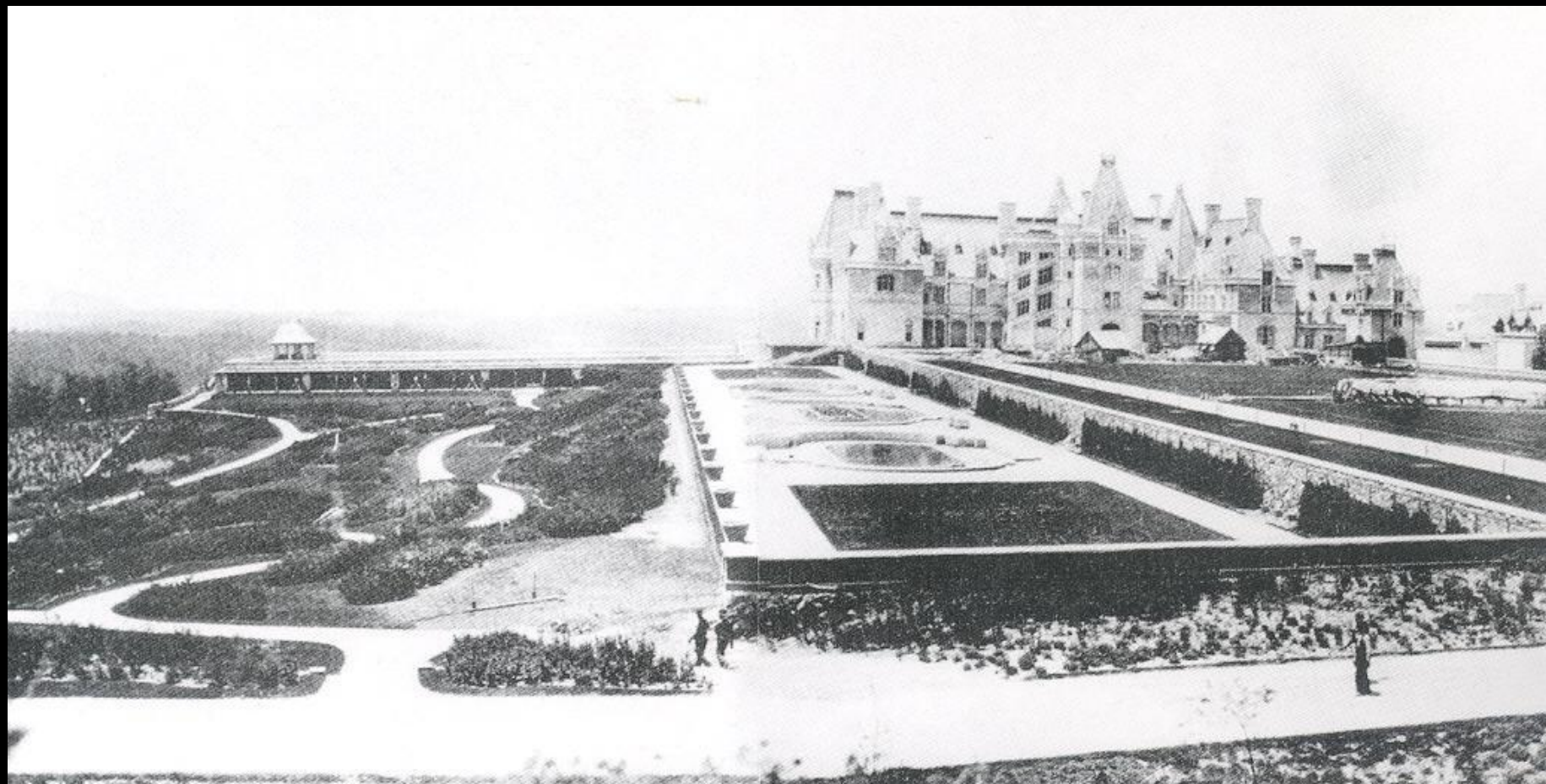


Fairsted, c. 1900



















Dr. Williams' Medicine Company

W. T. FORD & CO.

PINK PILLS FOR PALE PEOPLE.
NASAL BALM FOR COLD IN HEAD AND CATARRH.
HANSON'S MAGIC CORN SALVE.

DICTATED, G. T. F.,

PROPRIETORS.

Brockville, Ont. Sept. 18th./96

Mr. F. L. Olmstead, *FL*

Brookline, Mass.,

OLMSTED, OLMSTED & ELIOT.
REC'D SEP 21 1896
ACK'D BY
ANS'D BY *FL*
READ BY *FL*

Dear Sir:-

Your firm has been recommended to me as reliable landscape architects. I am desirous of having plans drawn for the improvement of a property consisting of ten (10) acres, situated on the Banks of the St. Lawrence, and will be glad to have you state your best terms for undertaking the work.

If you have anythink in the way of illustration showing work you have already carried out, I will be glad to have you send me copy of same. An early reply will oblige,

Yours truly,

G. T. Ford

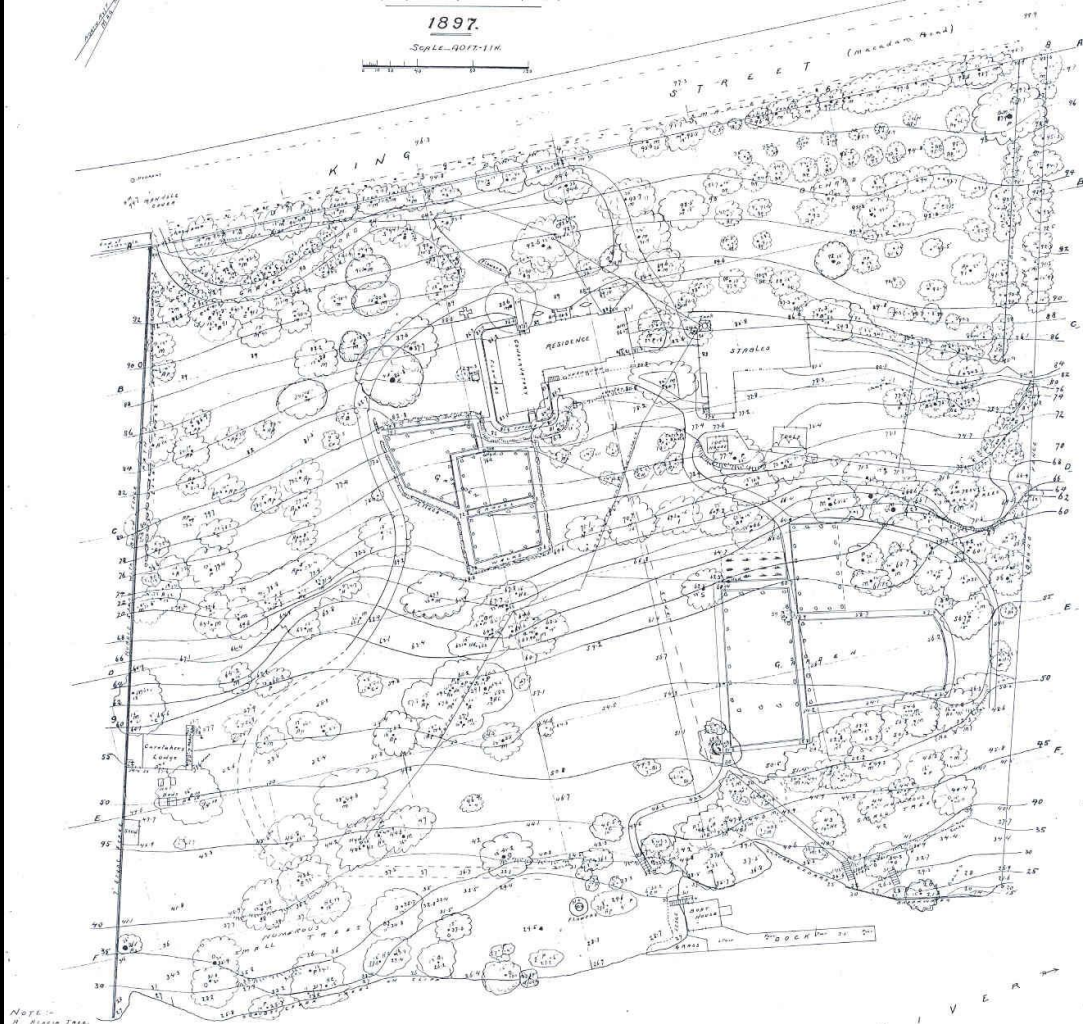


TOPOGRAPHICAL PLAN OF
"EDGAR PLACE," BROCKVILLE ONT.

PROPERTY OF G. T. FULFORD ESQ.

1897.

SCALE 40 FT. = 1 IN.



NOTE:-
A. PLANTING TREE.
B. APPLE.
C. BUSH.
D. CEDAR.
E. CHERRY.
F. HICKORY.
G. HAWTHORN.
H. LINDEN.
I. PINE.
J. SPRUCE.
K. YEW.
L. OAK.

BY R. S. C. TREE.
BY R. S. C. TREE.
BY R. S. C. TREE.
BY R. S. C. TREE.
BY R. S. C. TREE.
BY R. S. C. TREE.
BY R. S. C. TREE.
BY R. S. C. TREE.
BY R. S. C. TREE.
BY R. S. C. TREE.

ST. LAWRENCE

R. S. C. Tree
Brockville, Ont.
10th May 1897



G.T. FULFORD ESQ.

BROCKVILLE ONT.

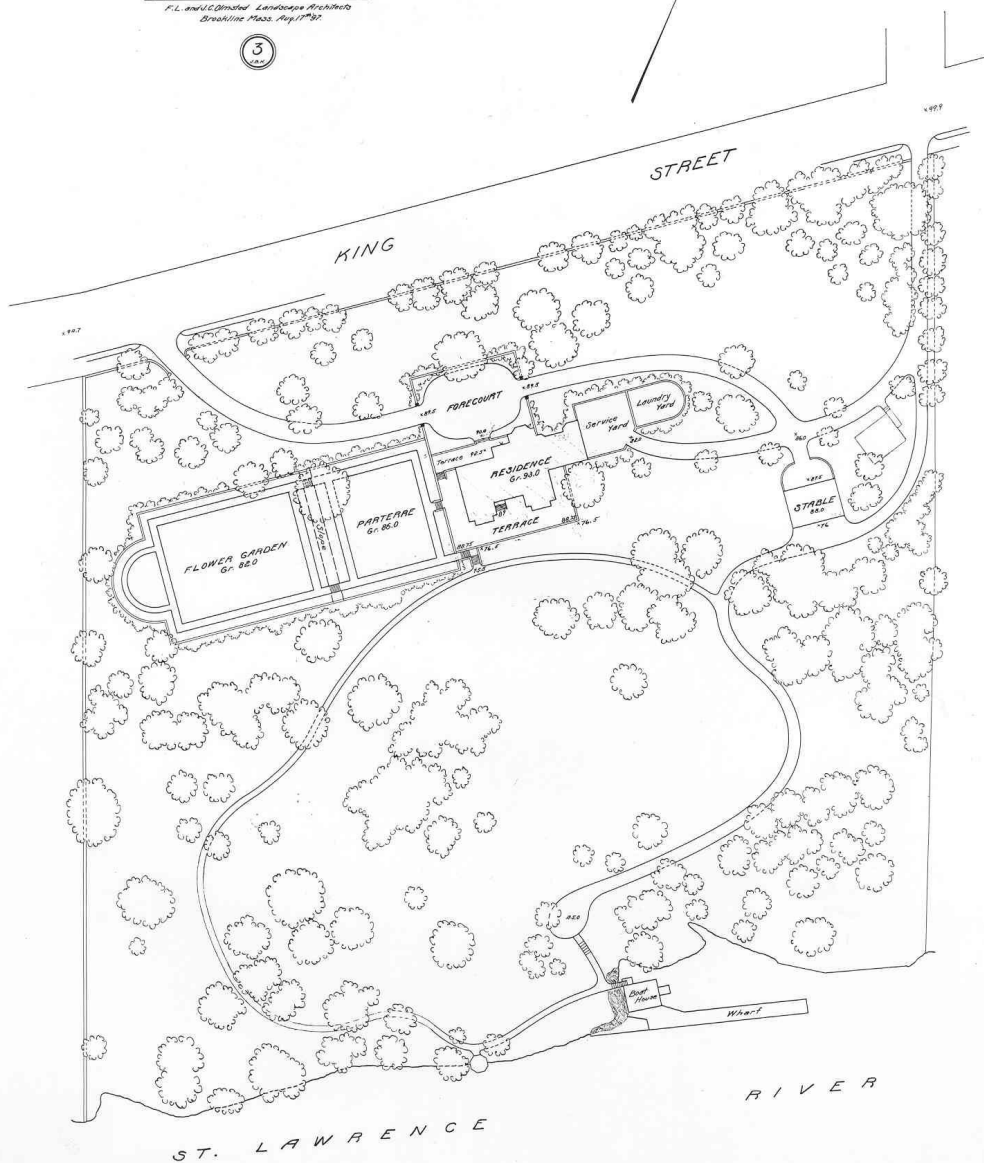
PRELIMINARY PLAN

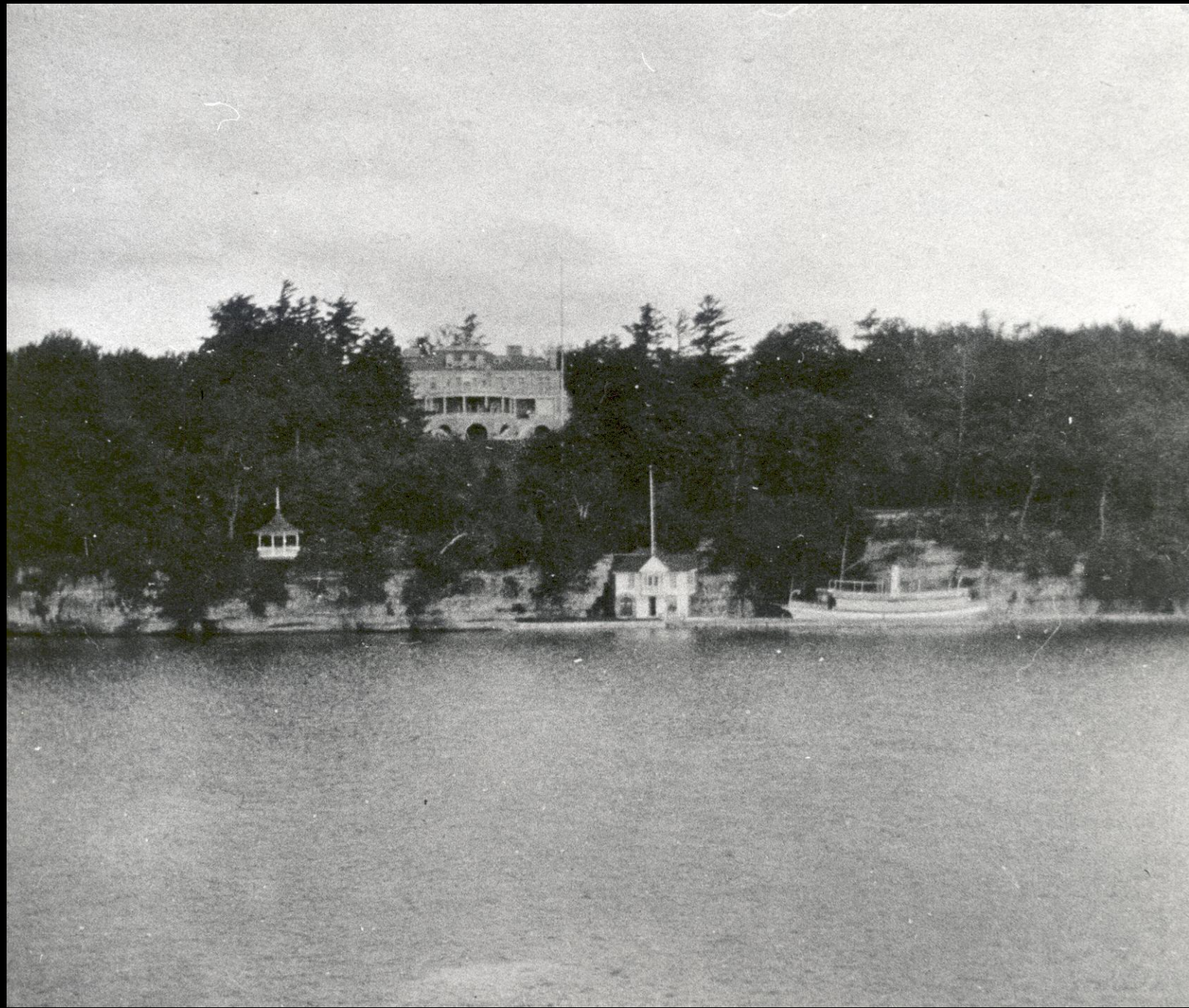
SCALE OF FEET

0 10 20 30 40 50 60 70 80 90 100

F.L. and U.C. Limited Landscape Architects
Brockville Mass. Aug. 17/1902

3

















BROCKVILLE ONTARIO

2. *2 buds 250 plants 31 report*
Sambucus racemosa 25 plants
Rus. coccinea 25 plants
Rus. typhosa 25 plants
Staphaea racemosa
Thym. canadensis 25 plants
Arbut. vitae
Rubus odoratus 25 plants
Smilax racemosa
Celastrus scandens 25 plants
Asclep. tuberosa
Rus. glabra 25 plants
Smilax latifolia
Barbarea vulgaris 25 plants
Sorberry
2. *3 buds 25 plants 31 report*
Syringae vulgaris 25 plants
Indica Curat.
Lycium barbarum 25 plants
Asplenium line.
Celastrus scandens 20 "
Barbarea vulgaris
Sorberry
Diopsa canadensis 22 "
Woodcock
Celastrus scandens 25 "
Bitter Sweet
3. *1 bud 25 plants 31 report*
Phytolophus grandifolia 25 plants
Black Dogwood
Syringae vulgaris 25 plants
Willow
Syringae vulgaris 25 plants
Spice Tree
Myrica pennsylvanica 25 "
Native Hydrangea
Rosa rugosa 25 plants
Samanea rosea
Saururus 25 plants
Syringae 25 plants
Hypericum virgatum 25 plants
St. John's Wort
Lychnis virginica 25 "
Syringae 25 plants
Paronychia Virginiana 25 "
Golden Rod
12. *1 bud 25 plants 31 report*
Asplenium quercifolia 25 plants
Woodcock
Celastrus scandens 25 plants
Barb. Sweet
Lycium carolinum 25 plants
Asplenium line.
3. *2 buds 250 plants 21 report*
Barbarea vulgaris 25 plants
Barberry
Viburnum opulus 25 "
High Bush Cranberry
Asplen. pennsylvanica 25 plants
2 buds 25 plants 31 report
Viburnum opulus 25 "
High Bush Cranberry
Barbarea vulgaris 25 plants
Barberry
Celastrus scandens 25 "
Bitter Sweet
Rubus odoratus 25 plants
Smilax racemosa 25 plants
Cornus 25 plants
Rus. typhosa 25 plants
Ligustrum vulgare 25 plants
Prickly
15. *Phytolophus canadensis* 25 report 25 plants
Black Dogwood
4. *2 buds 25 plants 21 report*
Rosa lucida 25 plants
Clay and Pearl Rose
Rosa blanda 25 plants
Ferry Hill Rose
21
Appelula multiflora 25 plants
Carolinee poplar
16. *1 bud 25 plants 21 report*
Asplenium quercifolia 25 plants
Native Phytolophus
Salixia latifolia 25 plants
Mountain Ash
Phytolophus hybridus 21 report 25 plants
Cornus 25 plants
22
Lycium carolinum

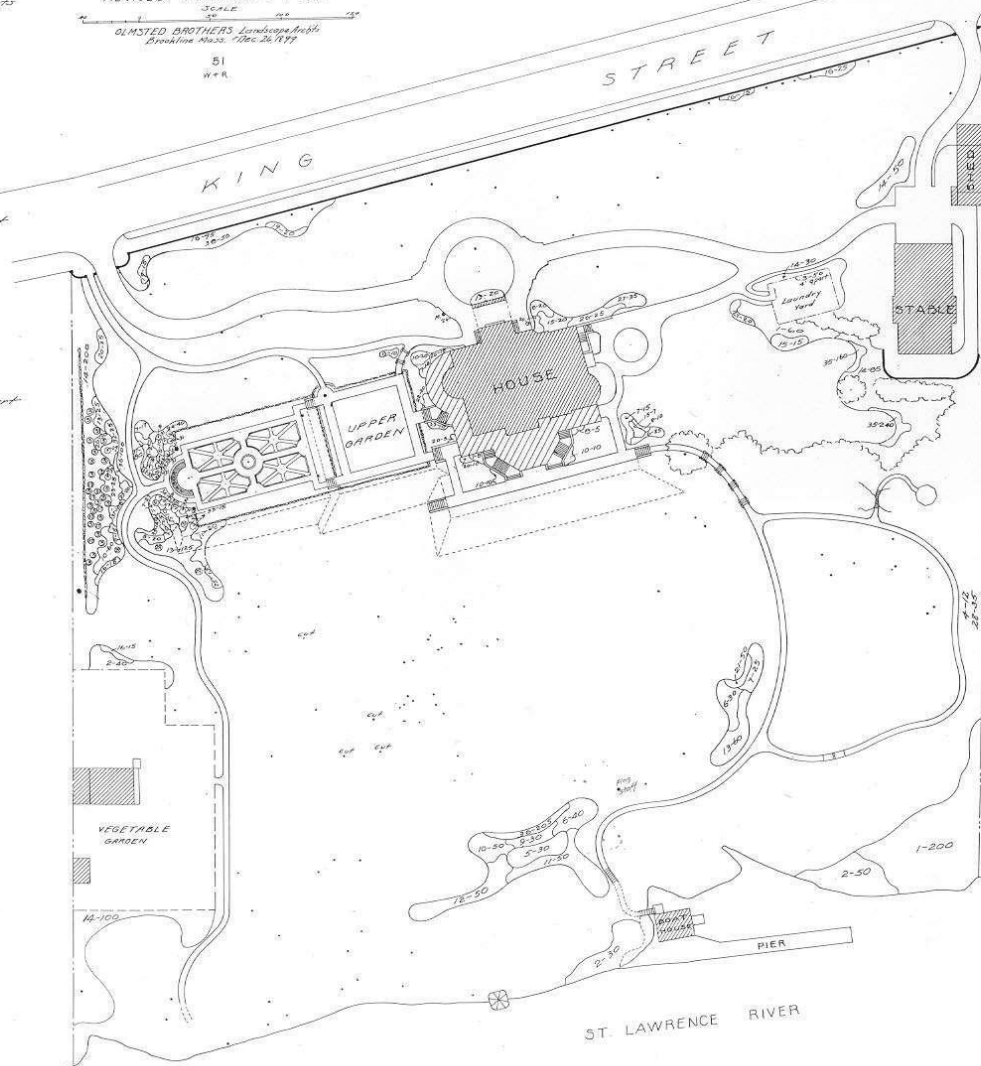
NOTE- First figures in the beds indicate the plants or the mixture of plants to be used in each space. Second figures show the number of individuals of each plant or mixture estimated to be required to fill each space.

SCALE

THEERS Landscape Architects
Mass. Dec. 26 1899

51
W + R

- [illegible]



KING STREET

Black Maple
C.1870

Black Maple
C.1890

Norway Maple
C.1840

Norway Maple
C.1900

Black Locust
C.1900

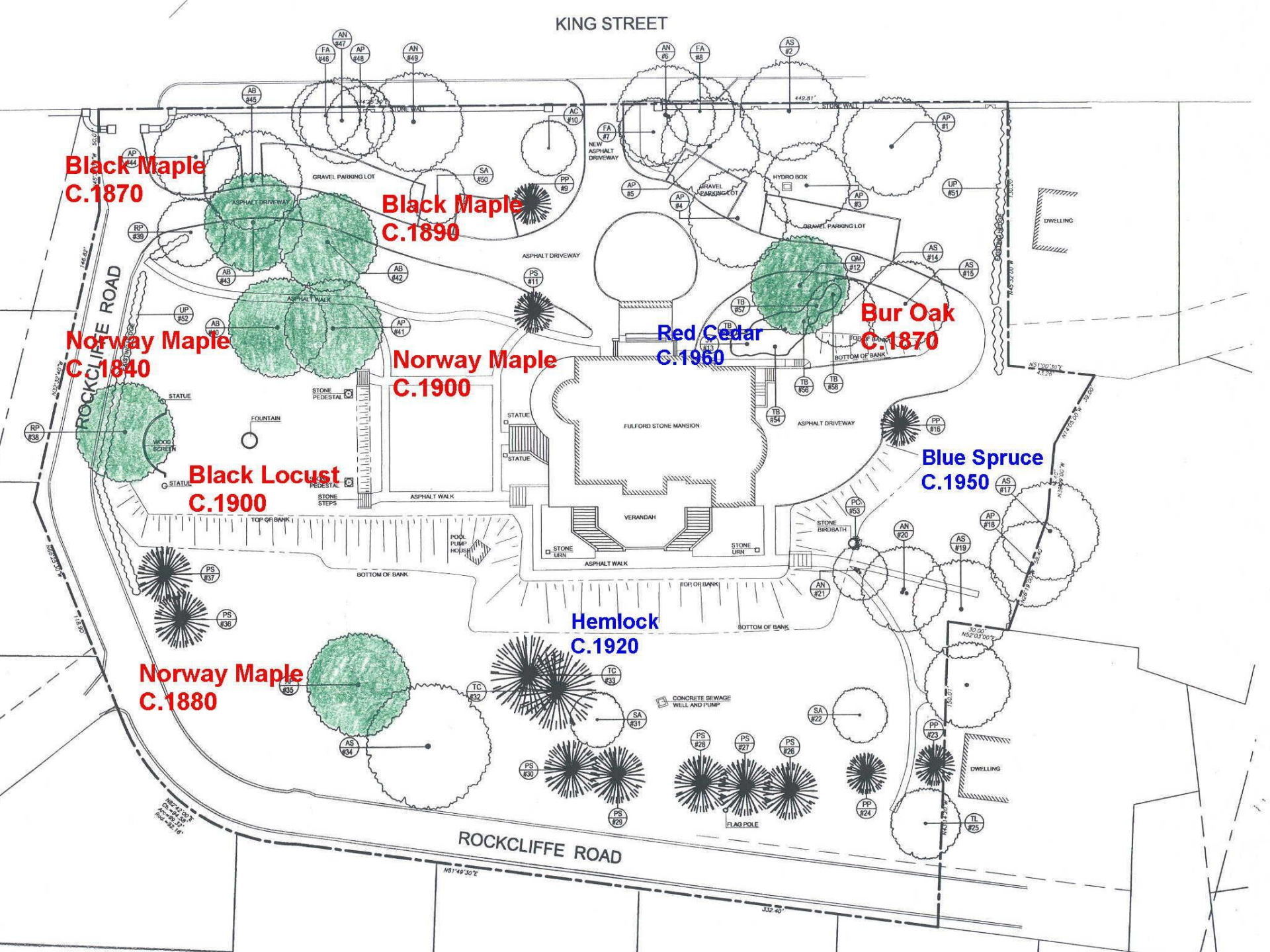
Red Cedar
C.1960

Bur Oak
C.1870

Blue Spruce
C.1950

Norway Maple
C.1880

Hemlock
C.1920









G. T. FULFORD ESQ.,

BROOKVILLE, ONTARIO

PLANTING PLAN

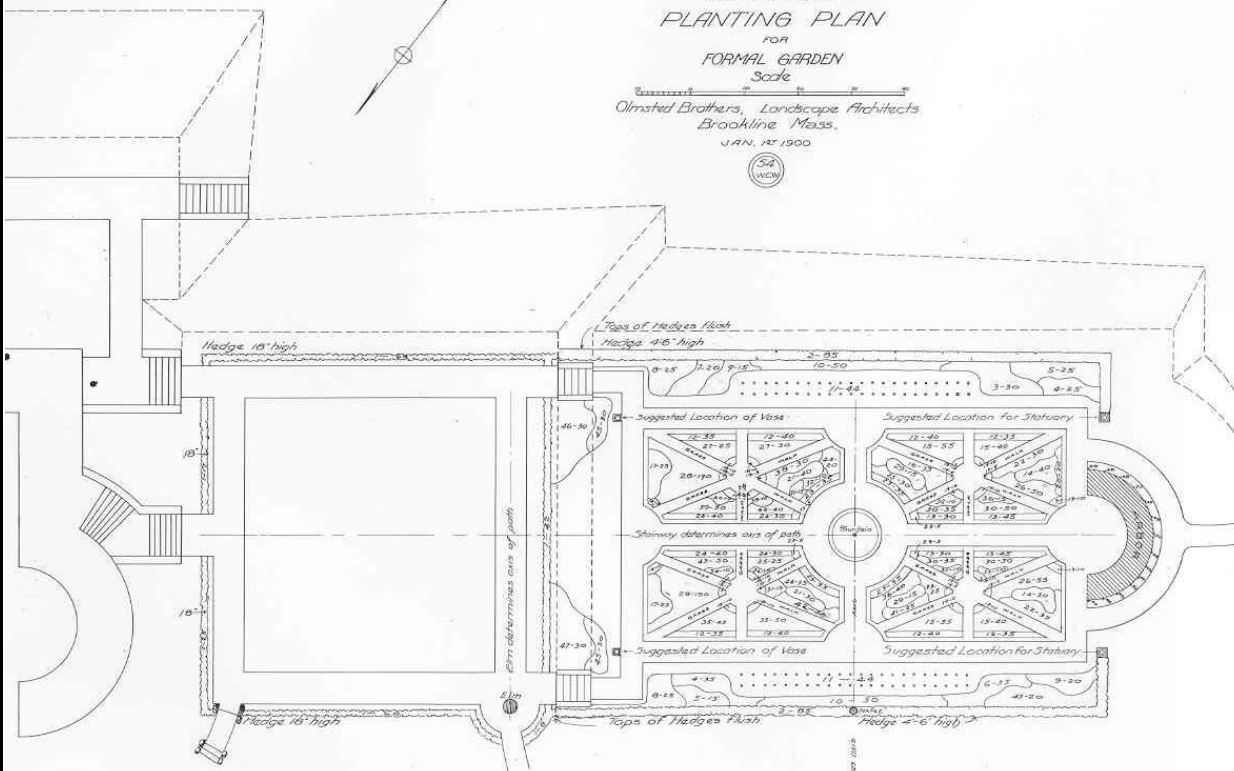
FOR

FORMAL GARDEN

Scale

Olmsted Brothers, Landscape Architects
Brookline, Mass.

JAN. 17, 1900



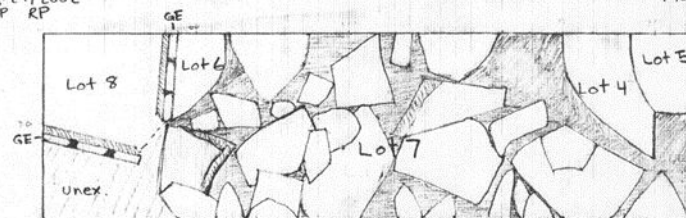
1. *Thymus globosus*, 210 plants, 15 inches apart.
2. *Thymus occidentalis*, 170 plants, 18" apart.
3. *Deutzia corymbosa*, 30 plants, 18" apart.
4. *Spiraea anthracifolia*, 60 plants, 18" apart.
5. *Spiraea angustata*, 40 plants, 18" apart.
6. *Spiraea ciliolata*, 35 plants, 18" apart.
7. *Spiraea vanhouttei*, 20 plants, 18" apart.
8. *Malva syriaca*, 50 plants, 18" apart.
9. *Rosa mollis*, 35 plants, 18" apart.
10. *Spiraea ciliolata*, 100 plants, 18" apart.
11. *Hydrangea*, 80 plants, 2' apart.
12. One bed, 300 plants, 6" apart.
13. *Myosotis palustris*, 170 plants, 6" apart.
14. *Delphinium chinensis*, 70 plants, 9" apart.
15. *Phlox hybrid*, 190 plants, 9" apart.
16. *Fuchsia grandiflora*, 35 plants, 1' apart.
17. *Yucca filamentosa*, 30 plants, 1' apart.
18. *Alysium sessile*, 100 plants, 6" apart.
19. *Bells perennis*, 100 plants, 6" apart.
20. *Platycodon grandiflorum*, 20 plants.
21. *Hemerocallis flava*, 70 plants, 9" apart.
22. *Polygonum alba*, 65 plants, 9" apart.
23. *Phlox subulata*, 100 plants, 6" apart.
24. *Isola semperirens*, 100 plants, 6" apart.
25. *Campanula carpbell*, 55 plants, 9" apart.
26. *Adonis vernalis*, 105 plants, 9" apart.
27. *Polygonum scarlet*, 35 plants, 1' apart.
28. Two beds, 100 plants, 6" apart.
29. *Hemerocallis dumortierii*, 30 plants, 1' apart.
30. *Convolvulus majestica*, 170 plants, 6" apart.
31. *Apulgia vulgaris*, 30 plants, 9" apart.
32. *Apulgia vulgaris*, 20 plants, 9" apart.
33. *Diaphis purpurea*, 25 plants, 9" apart.
34. *Lupinus perennis*, 20 plants, 9" apart.
35. Two beds, 35 plants, 9" apart.
36. Two beds, 35 plants, 9" apart.
37. *Pyrola hybrid*, 20 plants, 9" apart.
38. *Diandra spectabilis*, 40 plants, 9" apart.
39. *Quercus macrocarpa*, 50 plants, 6" apart.
40. *Potentilla hybrida*, 10 plants, 9" apart.
41. *Delphinium cashmerianum*, 25 plants, 9" apart.
42. *Phlox cespitosa*, 60 plants, 6" apart.
43. *Phlox nudicaulis*, 50 plants, 6" apart.
44. *Malva moschata*, 35 plants, 1' apart.
45. *Andromeda floribunda*, 60 plants, 1' apart.
46. *Spiraea vanhouttei*, 30 plants, 2' apart.
47. *Rosa rugosa alba*, 30 plants, 2' apart.
48. *Vitis riparia*, 8 plants.
49. *Clematis paniculata*, 5 plants.
50. *Actinidia polygama*, 3 plants.



Fulford Place
Op. 7 Unit C
Planview
Aug. 27/2002
KP, RP

7C PLANVIEW

1:10cm

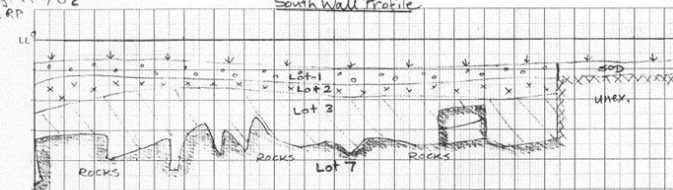


Legend

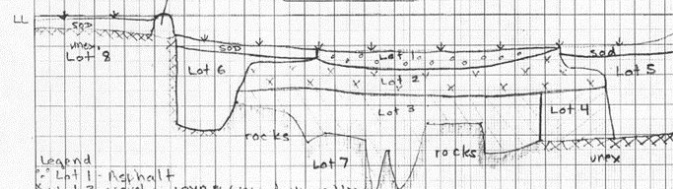
- GE - garden edging
- /// - sloping portions of rocks
- - Lot 7 soil matrix
- Lot 5 - 10YR 3/2 (very dark greyish brown) loam
- Lot 6 - 10YR 3/2 (very dark greyish brown) loam
- Lot 7 - large rocks and flagstones, surrounding soil 10YR 3/2 (very dark greyish brown) loam
- Lot 8 - Garden Soil 10YR 3/3 (dark brown)
- Lot 4 - Pea gravel in a loam matrix 10YR 3/2 (very dark greyish brown)

Fulford Place
Op. 7 Unit C
Aug. 27/2002
KP, RP

South Wall Profile

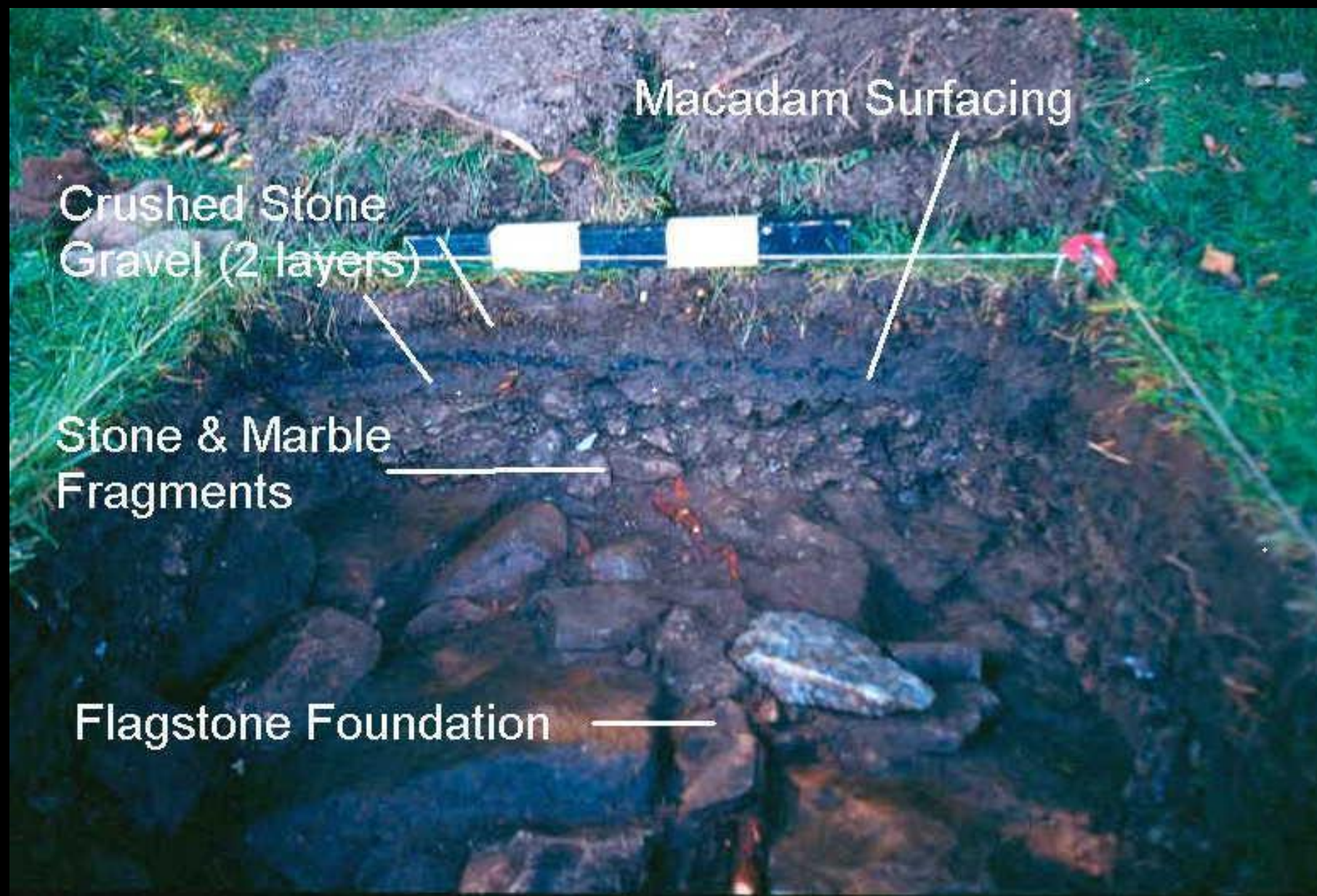


North Wall Profile



Legend

- Lot 1 - Asphalt
- x Lot 2 - gravel in 10YR 3/2 (very dark greyish brown) loam
- Lot 3 - Marble chips in loam 10YR 3/2 (very dark greyish brown)
- Lot 4 - Pea gravel in loam matrix 10YR 3/2 (very dark greyish brown)
- Lot 5 - loam 10YR 3/2 (very dark greyish brown)
- Lot 6 - loam 10YR 3/2 (very dark greyish brown)
- Lot 7 - large rocks and flagstones in a loam soil matrix 10YR 3/2 (very dark greyish brown)
- Lot 8 - Garden soil 10YR 3/3 (dark brown)

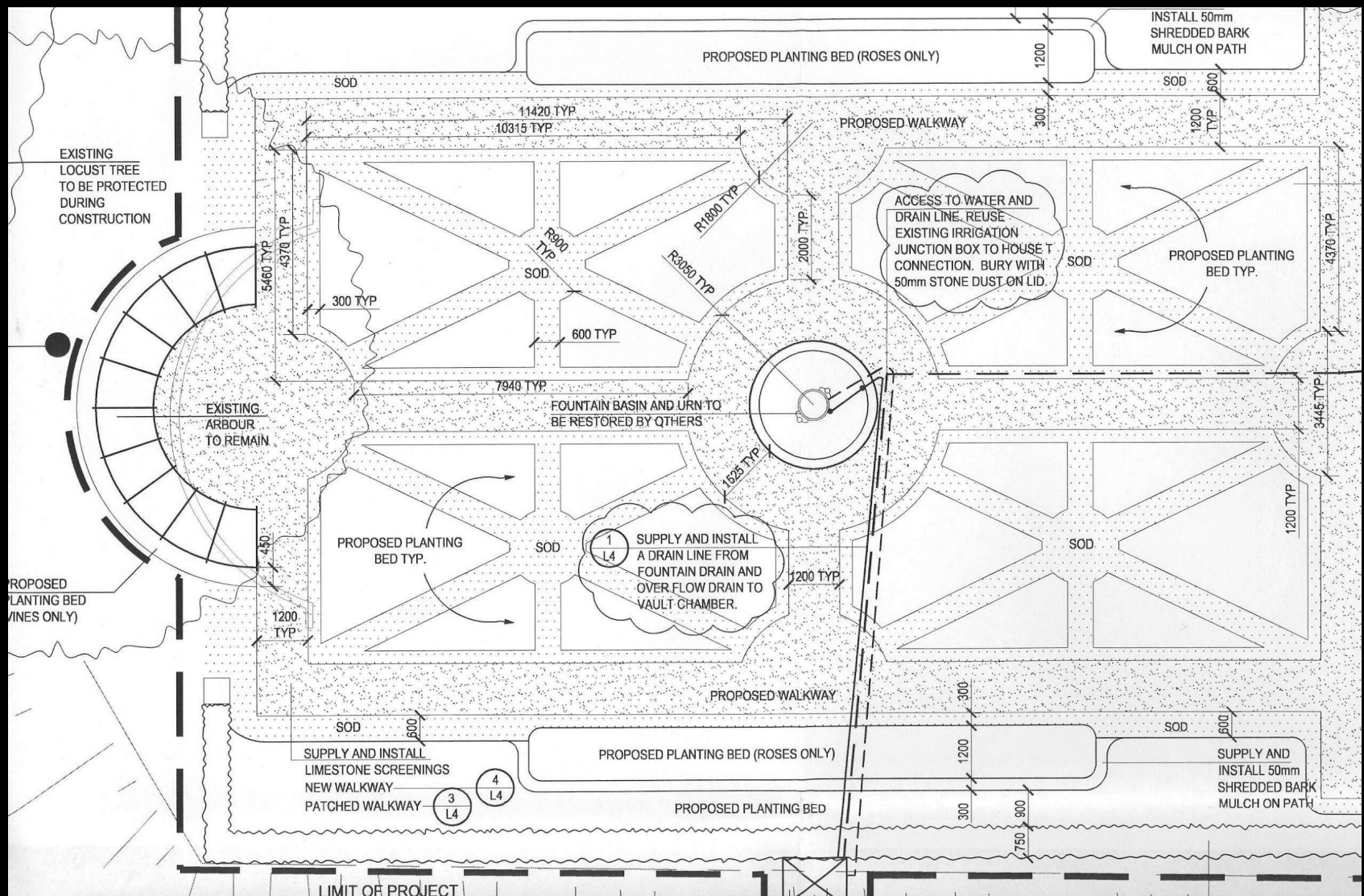


Macadam Surfacing

Crushed Stone
Gravel (2 layers)

Stone & Marble
Fragments

Flagstone Foundation























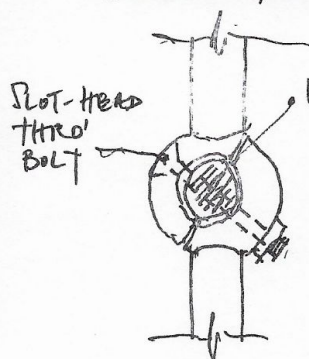




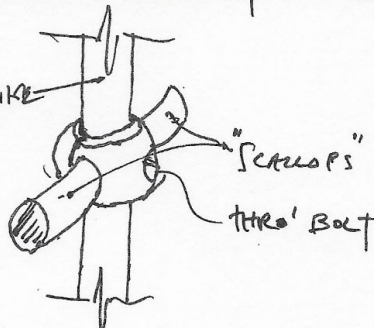
INFORD PLACE - IRON CRESTING @ "KNUCKLES"

N.T.S.

Sls. 02
DEC 1 / 2013



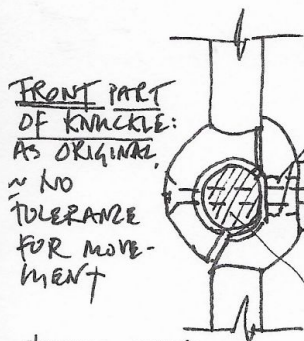
EXIST. - PLAN VIEW
ABOVE KNUCKLE



EXIST. - "AXOND."
VIEW @ KNUCKLE

NB - UPPER + LOWER DIAG²
THRO' BOLTS GO IN
OPPOSITE DIRECTIONS, I.E.
 $\pm 90^\circ$ OFFSET BETWEEN
THESE. MINIMAL MOVEMENT
+ MINIMAL TOLERANCE!

• W.I. SPIKES @ TYP. $44 \frac{5}{8}"$ c.c.
BUT VARY c. $44 \frac{1}{2}"$ - $44 \frac{3}{4}"$ c.c.
— MIN $\frac{1}{4}"$ SLOT REQ'D -
AT REAR OF KNUCKLE



FRONT PART
OF KNUCKLE:
AS ORIGINAL,
~ NO
TOLERANCE
FOR MOVE-
MENT

REAR PART OF KNUCKLE:

$\pm \frac{1}{8}"$ CLEARANCE (IN SLOT $\pm \frac{1}{2}"$ WIDE O.A.)
@ BOTH SIDES OF NEW STRAIGHT THRO'
SS BOLT w/ FLAT WASHER AT REAR
UNDER NEW SQUARE NUT.

.. KNUCKLE AT REAR IS $\pm \frac{1}{4}"$ UNDER / LOWER
THAN ORIGINAL

PROPOSED - PLAN VIEW ABOVE KNUCKLE

• NICHOLAS HOLMAN OAA.
FCIT















