

Project:  
House Design  
#1037

OWNER:

Project number: 10.37

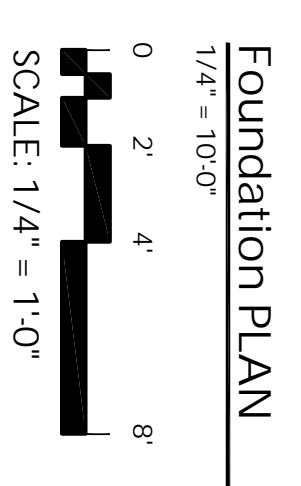
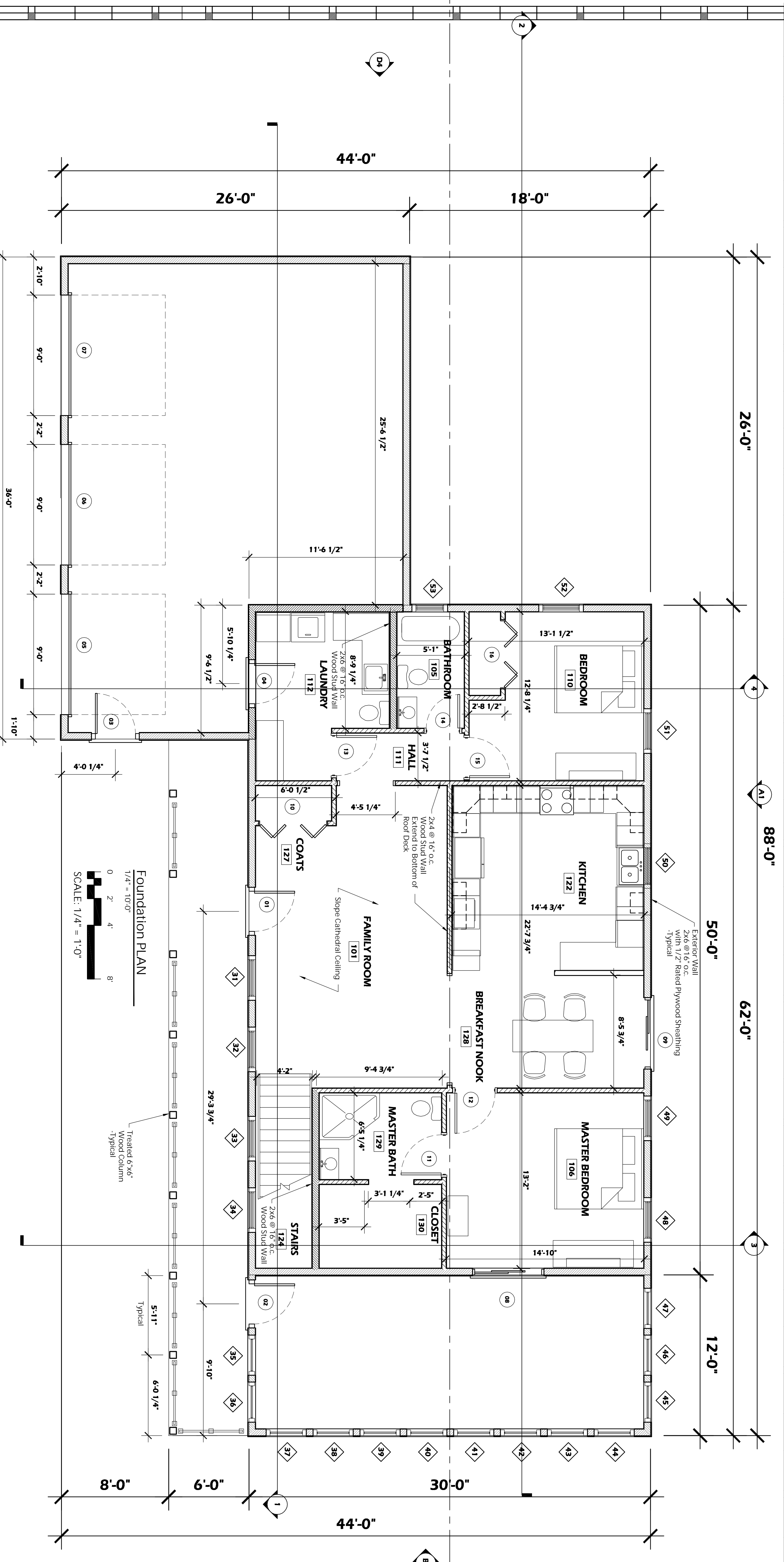
ITEMS SHOWN ARE DIAGRAMMATIC AND ARE SHOWN FOR THE LIMITED PURPOSE OF INDICATING PROPOSED LOCATIONS OF THE DESIGN. CONTRACTORS SHALL PROVIDE WORK IN ACCORDANCE WITH ALL APPLICABLE CODES AND REGULATIONS REQUIRED BY THE AUTHORITY HAVING JURISDICTION. CONTRACTOR SHALL COORDINATE THE INSTALLATION OF NEW SYSTEMS WITH EXISTING SYSTEMS.

Note: © COPYRIGHT  
UNAUTHORIZED COPYING, DISCLOSURE OR CONSTRUCTION WITHOUT WRITTEN PERMISSION BY THOMAS MCINERNEY, 1208 Marcy Street, Iowa City, Iowa 52240 IS PROHIBITED.

Issue date:  
Date Description  
2010.12.28 OWNER REVIEW  
2011.01.05 First Pricing

Sheet Title:  
FLOOR  
Plan

Sheet Number:  
A-101

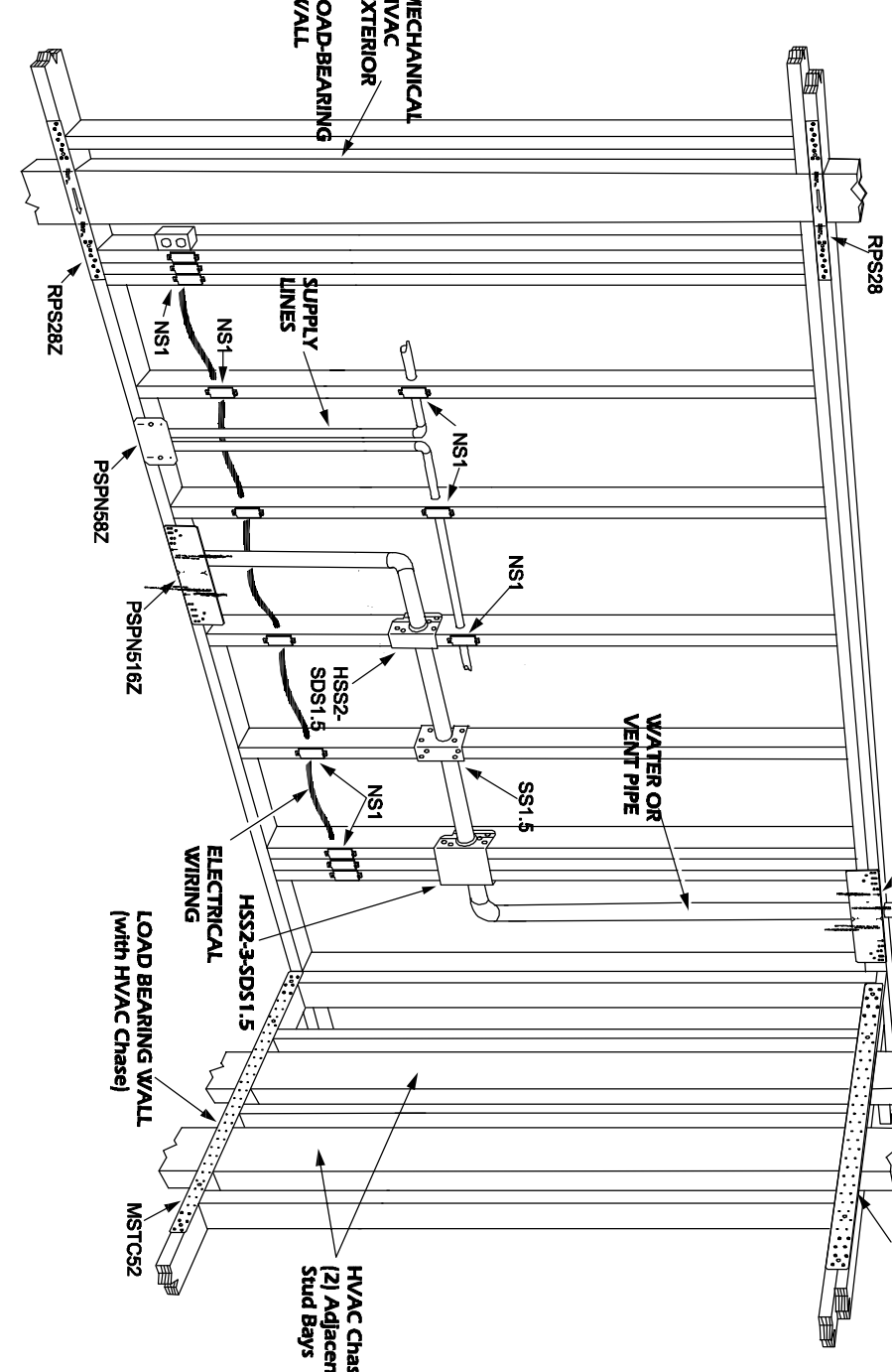


MARK	SIZE	Sill Height	R.O. Top	TYPE
31	3'-4" x 4'-0"	2'-8"	6'-8"	Double Hung Window
32	3'-4" x 4'-0"	2'-8"	6'-8"	Double Hung Window
33	3'-4" x 4'-0"	2'-8"	6'-8"	Double Hung Window
34	3'-4" x 4'-0"	2'-8"	6'-8"	Double Hung Window
35	3'-0" x 5'-0"	1'-8"	6'-8"	Fixed Window
36	3'-0" x 5'-0"	1'-8"	6'-8"	Fixed Window
37	3'-0" x 5'-0"	1'-8"	6'-8"	Fixed Window
38	3'-0" x 5'-0"	1'-8"	6'-8"	Fixed Window
39	3'-0" x 5'-0"	1'-8"	6'-8"	Fixed Window
40	3'-0" x 5'-0"	1'-8"	6'-8"	Fixed Window
41	3'-0" x 5'-0"	1'-8"	6'-8"	Fixed Window
42	3'-0" x 5'-0"	1'-8"	6'-8"	Fixed Window
43	3'-0" x 5'-0"	1'-8"	6'-8"	Fixed Window
44	3'-0" x 5'-0"	1'-8"	6'-8"	Fixed Window
45	3'-0" x 5'-0"	1'-8"	6'-8"	Fixed Window
46	3'-0" x 5'-0"	1'-8"	6'-8"	Fixed Window
47	3'-0" x 5'-0"	1'-8"	6'-8"	Fixed Window
48	3'-4" x 4'-0"	2'-8"	6'-8"	Double Hung Window
49	3'-4" x 4'-0"	2'-8"	6'-8"	Double Hung Window
50	3'-4" x 4'-0"	2'-8"	6'-8"	Double Hung Window
51	3'-4" x 4'-0"	2'-8"	6'-8"	Double Hung Window
52	3'-4" x 4'-0"	2'-8"	6'-8"	Double Hung Window
53	2'-8" x 4'-0"	2'-8"	6'-8"	Double Hung Window

Truss Design Construction Documents shall be prepared by a registered design professional and shall be provided to the building official and approved prior to installation. The information provided herein is for informational purposes only and is not intended to be used for construction. Truss shop drawings shall be provided with the shipment of trusses delivered to the job site.

1. Truss design shall be in accordance with the design information provided.
2. Spacing of joints shall be in accordance with the design information provided.
3. Required bearing shall be in accordance with the design information provided.
4. Design loads as applicable.
5. Trusses shall be designed in accordance with the design information provided.
6. Top chord dead load.
7. Bottom chord live load.
8. Bottom chord dead load.
9. Trusses shall be designed in accordance with the design information provided.
10. Connections shall be in accordance with the design information provided.
11. Adjustments to lumber and metal connector plate design values as conditions of use.
12. Metal connector plate type, size, thickness or gage, and the dimensional location of each metal connector plate except where otherwise indicated.
13. Minimum wind and earthquake loads.
14. Trusses shall be designed in accordance with the design information provided.
15. Connections shall be in accordance with the design information provided.
16. Calculated deflection ratio or maximum deflection for live and wind load.
17. Trusses shall be designed in accordance with the design information provided.
18. Trusses shall be designed in accordance with the design information provided.
19. Trusses shall be designed in accordance with the design information provided.
20. Trusses shall be designed in accordance with the design information provided.

LUMBER SPECIES		NO. 2 DOUGLAS FIR	
POSTS, BEAMS, HEADERS, JOISTS, WALL STUDS, RAFTERS	NO. 3 DOUGLAS FIR	NO. 3 DOUGLAS FIR	
SILL PLATES, BRIDGING	NO. 3 DOUGLAS FIR		
INTERIOR FLOOR JOIST SPANS			
40# LIVE LOAD / 10# DEAD LOAD DEFLECTION LIMIT BY 1/360 FOR LIVE LOAD ONLY			
MEMBER SPACING	NO. 2		
Zx6	12' O.C. 10-3"		
Zx8	16' O.C. 9-3"		
Zx10	12' O.C. 10-3"		
Zx12	16' O.C. 12-7"		
Zx14	24' O.C. 10-3"		
Zx16	12' O.C. 17-3"		
Zx18	16' O.C. 15-5"		
Zx20	12' O.C. 20-7"		
Zx24	16' O.C. 17-10"		
Zx30	24' O.C. 14-7"		



Number	Room Name	Net Area
101	FAMILY ROOM	308 SF
105	BATHROOM	43 SF
106	MASTER BEDROOM	193 SF
110	BEDROOM	164 SF
111	HALL	34 SF
112	LAUNDRY	109 SF
122	KITCHEN	197 SF
124	STAIRS	82 SF
127	COATS	15 SF
128	BREAKFAST NOOK	126 SF
130	MASTER BATH	61 SF
130	CLOSET	44 SF
16		1,376 SF

Number	ROOM	SIZE-PR. WxH	HARDWARE
01		3'-0" x 6'-8"	-
02		3'-0" x 6'-8"	-
03		3'-0" x 6'-8"	-
04		3'-0" x 6'-8"	-
05		9'-0" x 7'-0"	-
06		9'-0" x 7'-0"	-
07		9'-0" x 7'-0"	-
08		PR. 2'-6" x 6'-8"	-
09		PR. 2'-6" x 6'-8"	-
10		4 @ 1'-3" x 6'-8"	-
11		3'-0" x 6'-8"	-
12		3'-0" x 6'-8"	-
13		3'-0" x 6'-8"	-
14		2'-6" x 6'-8"	-
15		3'-0" x 6'-8"	-
16		4 @ 1'-3" x 6'-8"	-

Number	Room Name	Net Area
100	FRONT PORCH	312 SF
107	4-SEASONS ROOM	360 SF
150	GARAGE	749 SF
190	BASEMENT	1,395 SF
		2,816 SF

Number	ROOM	SIZE-PR. WxH	HARDWARE
369	BASEMENT	3'-0" x 6'-8"	-