

R10-11 , “NO TURN ON RED” w/ Red Ball

MATERIALS

Extruded Aluminum 1.5” Sq.
 Reinforced ¼” Aluminum Plate Corners
 Face Material - ¼” Impact resistant clear gray tint polycarbonate
 Back Material - ¼” AlumaLite or 1/4” HDPE

ELECTRICAL

12 VDC @ 2.6 Amps, approx. 32 Watts. (Single row 5x7).
 12 VDC @ 2.2 Amps, approx. 33 Watts. (Dual row, 24x30, 30x36)
 Operating Temp. -40 to +90 deg.C (-40 to +194 deg.F).
 Rear Enclosure NEMA4X / UL508
 IP65 12 VDC @ 35 or 60 Watt UL power supply included.
 Optional Auto Night Dimmer now available.

LED's

Can be ordered as single or dual row LED characters.
 Cree 30 deg. **WHITE** 5mm Hi-brightness **RED** 5mm Hi-brightness
 6” High text “NO” **6” Red Ball**
 5” High text, “TURN ON RED”
 Message blanks out when turned off. Auto Night Dimming.

FINISH

Standard Black Powdercoat or Natural Aluminum Clear Coat.
 Custom colors available on request.

PHYSICAL

Standard sign Sealed. IP55 weather tight.
 Viewable 24w x 30h (Actual 27.5w x 33.5h x 1.75d)
 Viewable 28.5w x 33.5h (Actual 30w x 36h x 1.75d)
 Viewable 33.5w x 44.5h (Actual 36W x 48h x 1.75s)
 Mounting - (4 or 6) movable S.S. 5/16-18 T-Slot Nuts in top and bottom slots .
 Sign Weight - 28lbs (24x30), 38lbs (30x36), 50lbs (36x48).

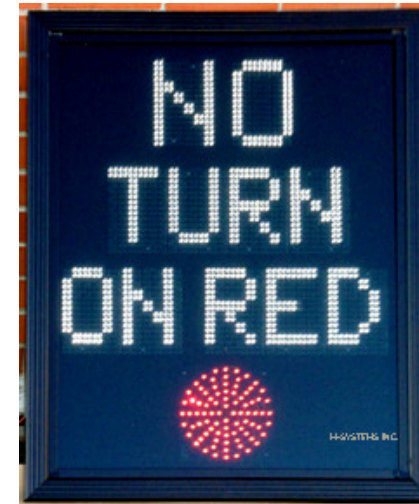
©2021

Available from

M - SYSTEMS INC.

12 Valley View Rd, Newtown, CT 06470

msystemsled@gmail.com



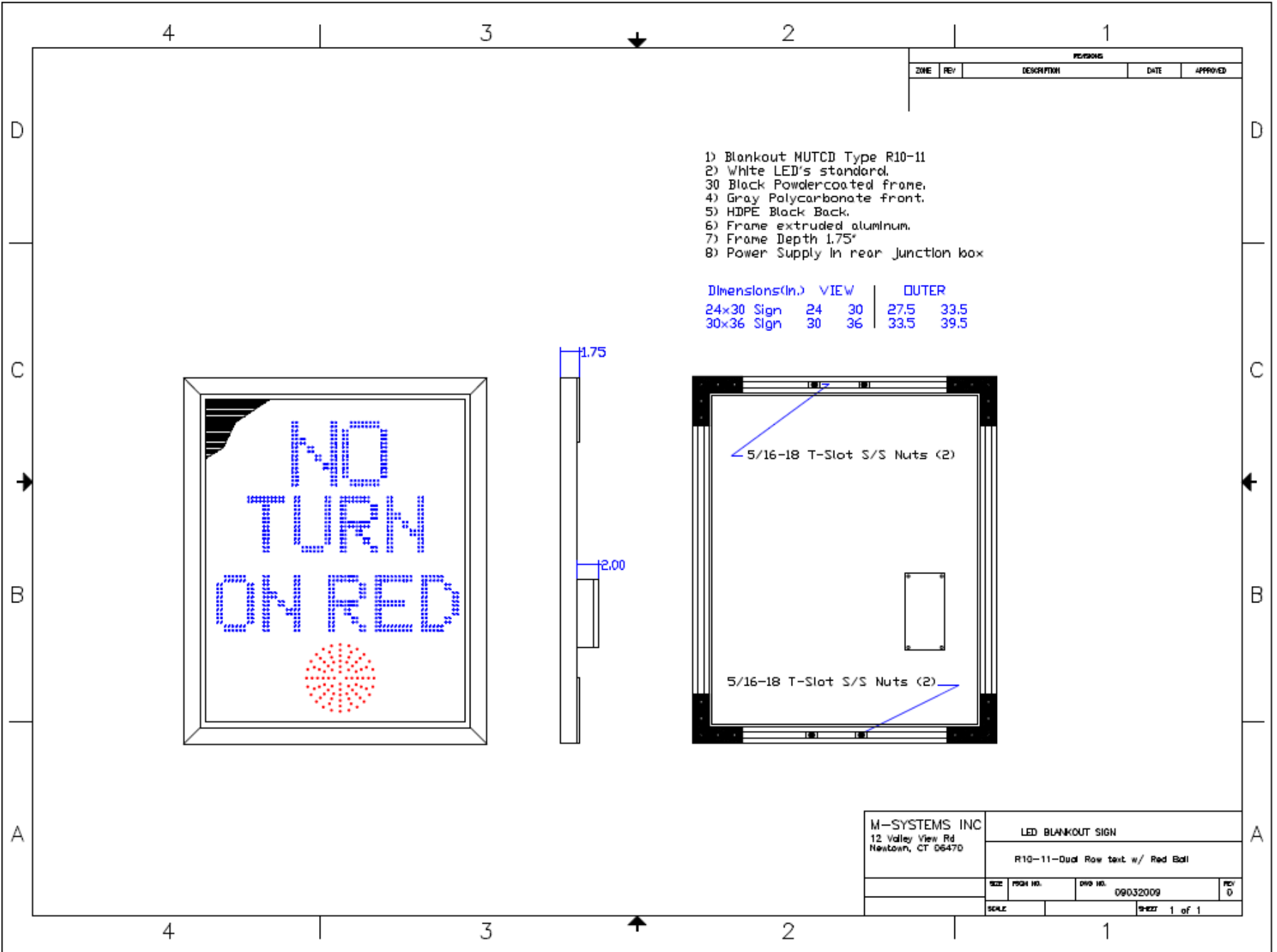
30 x 36 Black



24 x 30 Clear Lens
Single Row



24 x 30 Black Lens
Dual Row



REVISIONS				
ZONE	REV	DESCRIPTION	DATE	APPROVED

M-SYSTEMS INC 12 Valley View Rd Newtown, CT 06470	LED BLANKOUT SIGN			
	R10-11-Dual Row text w/ Red Ball			
SIZE	FORM NO.	DWG NO.	09032009	REV 0
SCALE	1 of 1			