



tridel.com



BAYSIDE
TORONTO | A HINES MASTER
PLANNED COMMUNITY.

T H E U R B A N
collection

AQUABELLA
BAYSIDE TORONTO

LUXURY BY THE LAKE



Benchmark Signature Realty INC. Brokerage

1020 Denison Street Unit 113

L3R 3W5 Markham Ontario

Tel 905 604 2299 Fax 905 604 0622

<http://www.benchmarksignaturerealty.com>



THE URBAN

collection

Benchmark Signature Realty INC. Brokerage

1020 Denison Street Unit 113

L3R 3W5 Markham Ontario

Tel 905 604 2299 Fax 905 604 0622

<http://www.benchmarksignaturerealty.com>



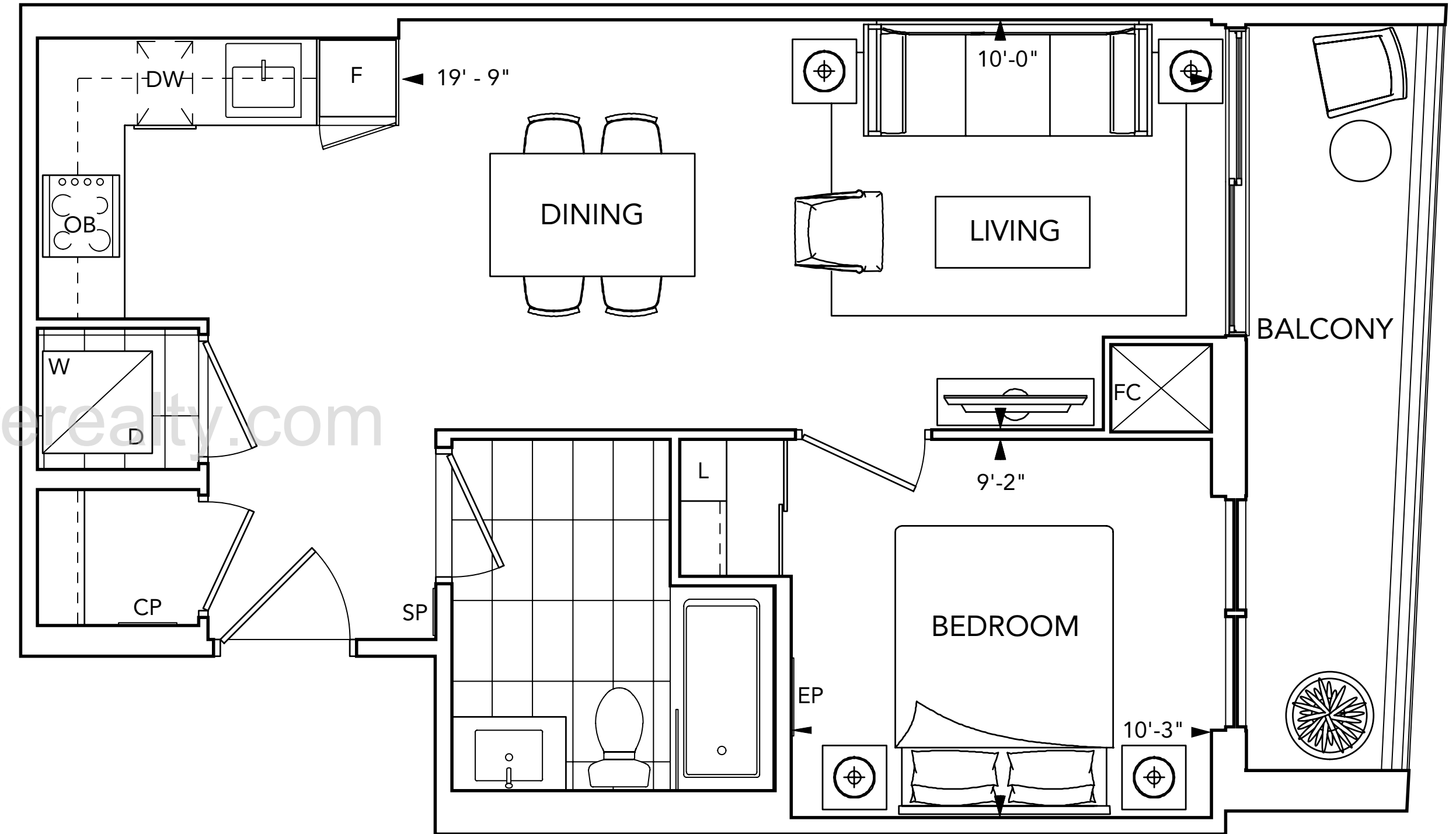
CITY VIEW

SUITE 1A

1 BEDROOM



Floors 3-8

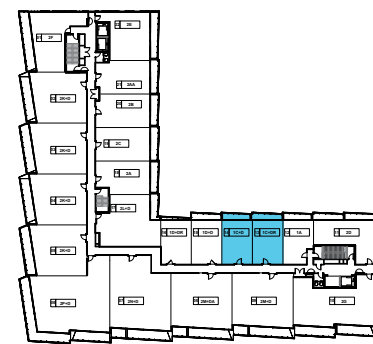




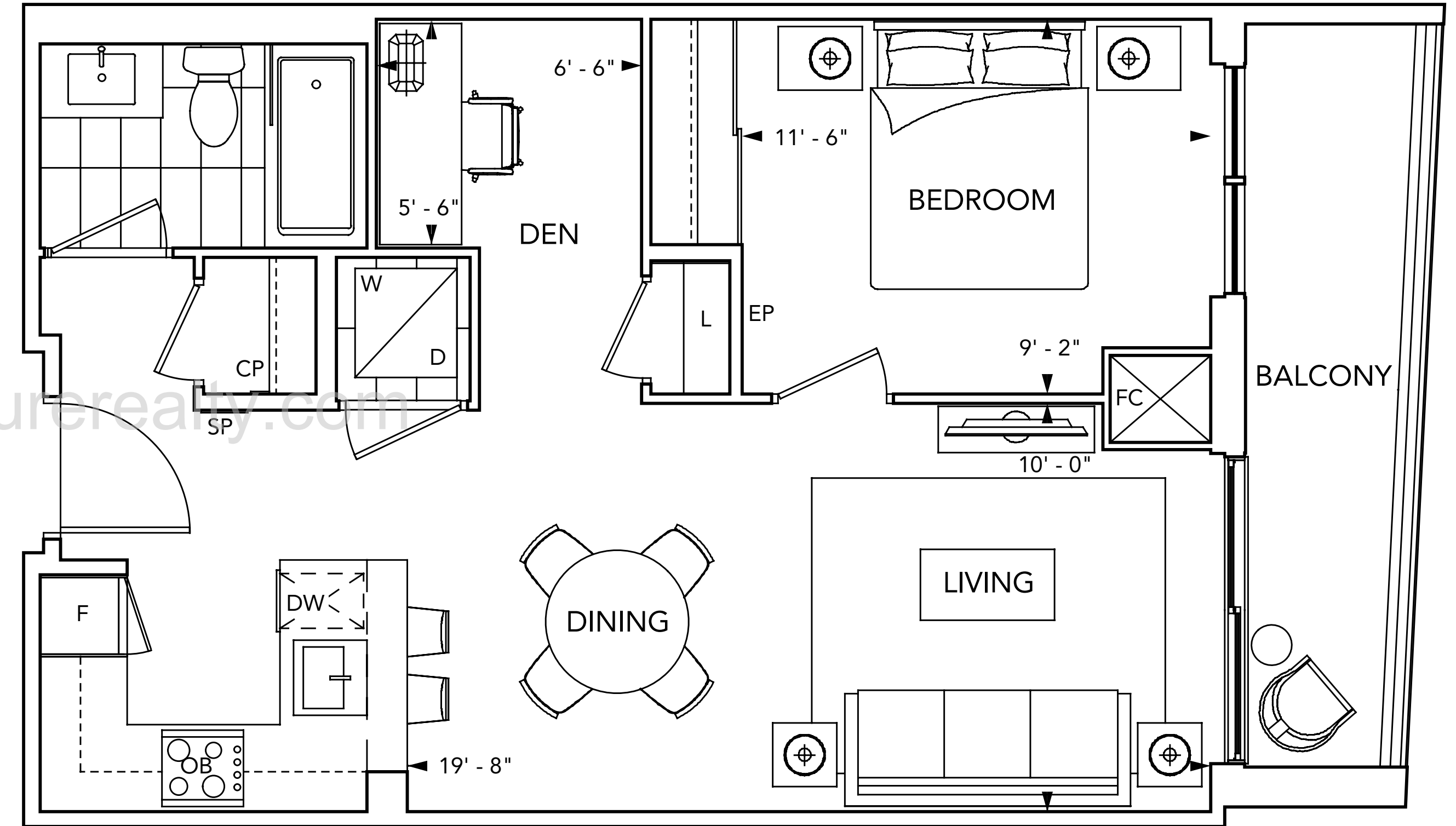
CITY VIEW

SUITE 1C+D/1C+DR

1 BEDROOM + DEN



Floors 2-7

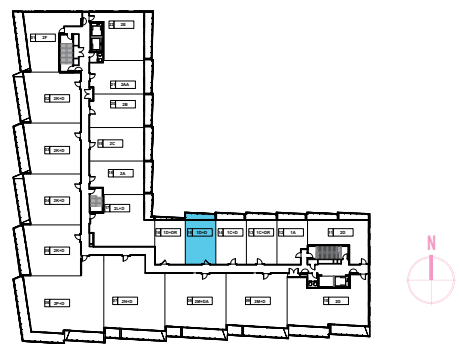




CITY VIEW

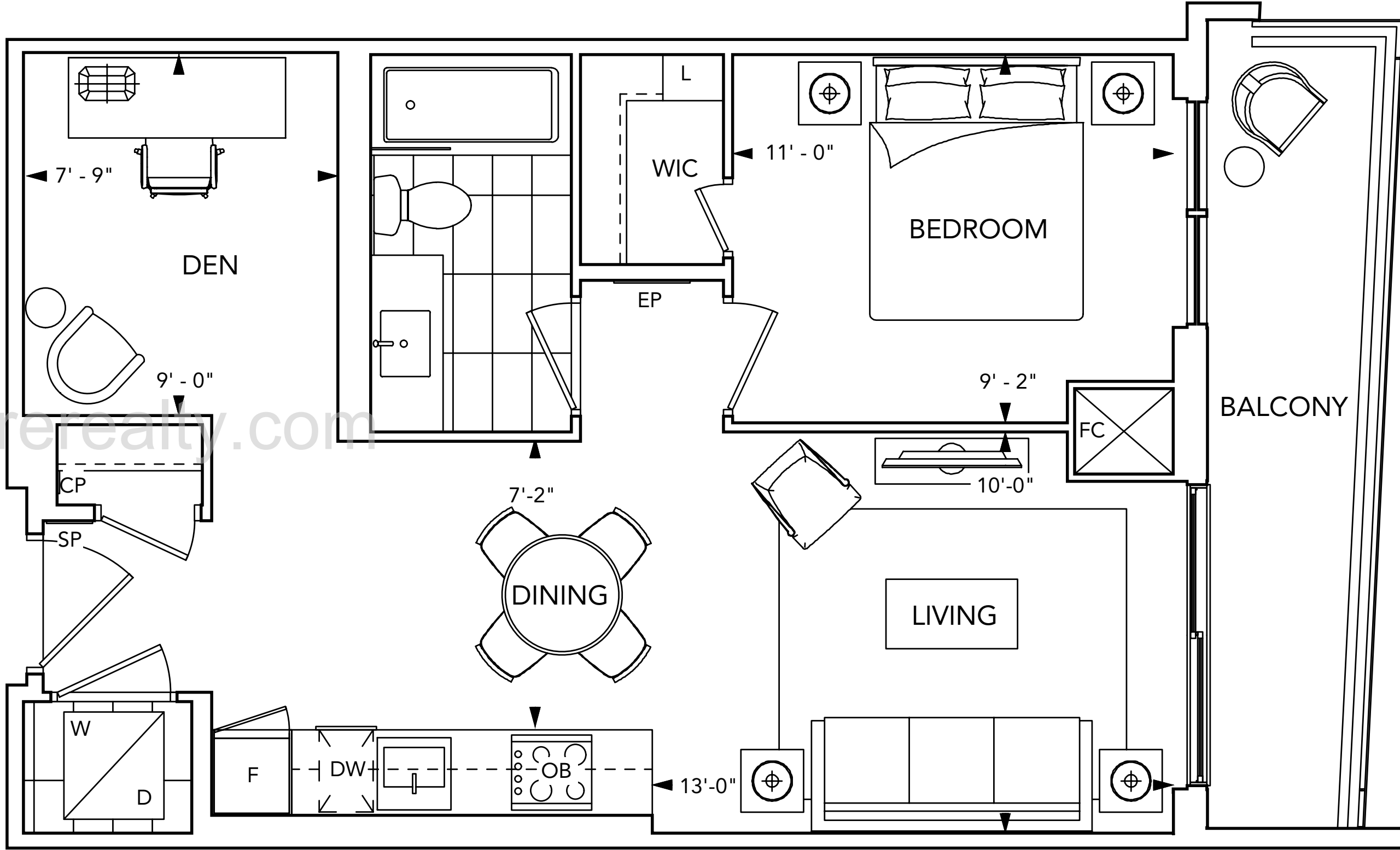
SUITE 1D+D

1 BEDROOM + DEN



Floors 3-5

www.benchmarksignature.com



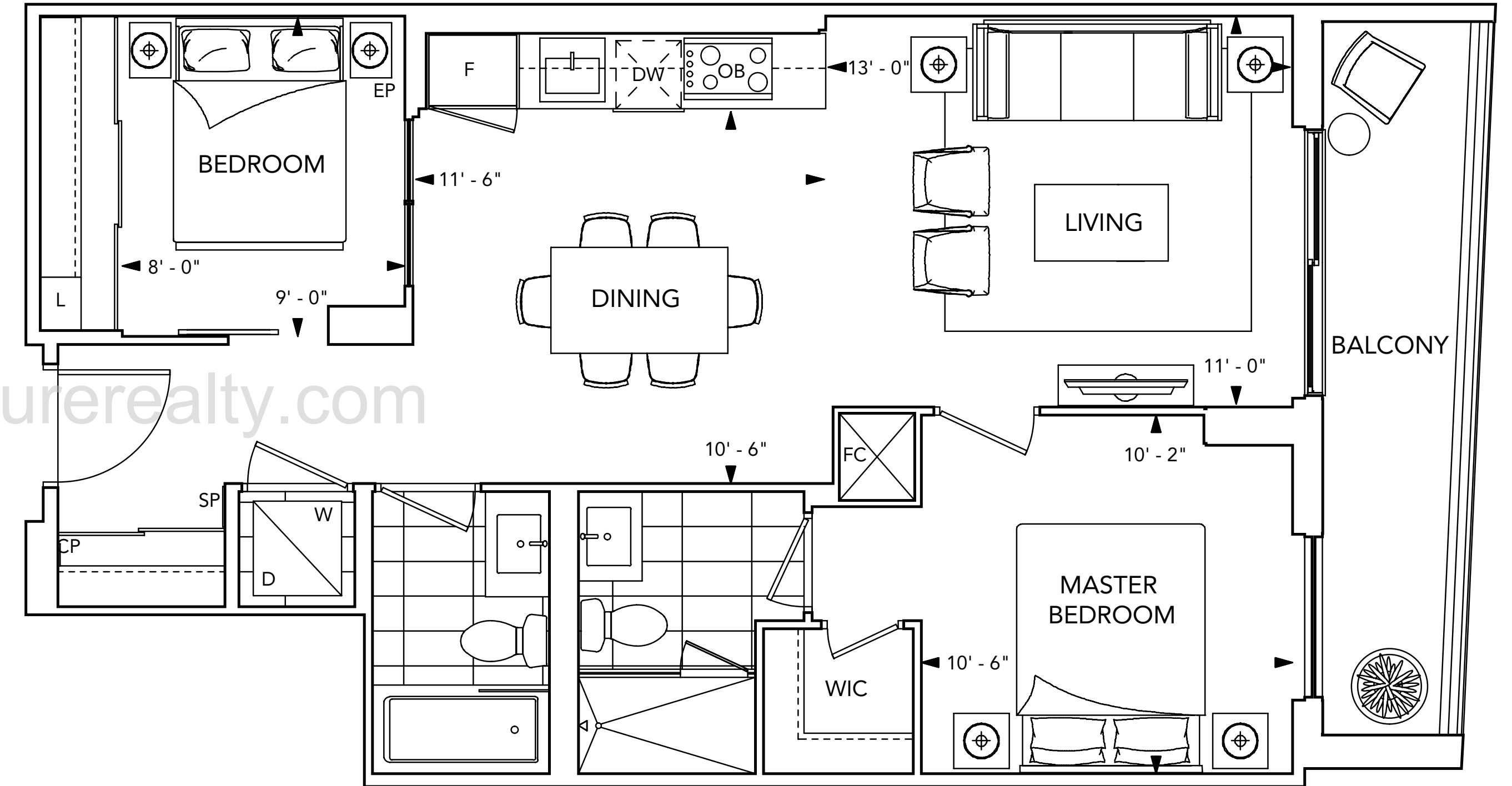


SUITE 2A

2 BEDROOM



www.benchmarksignaturerealty.com

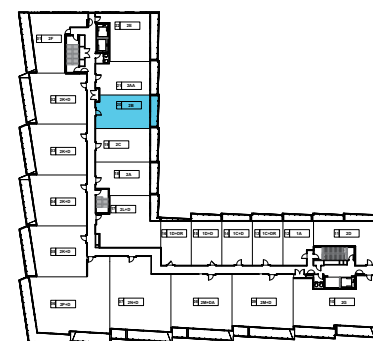




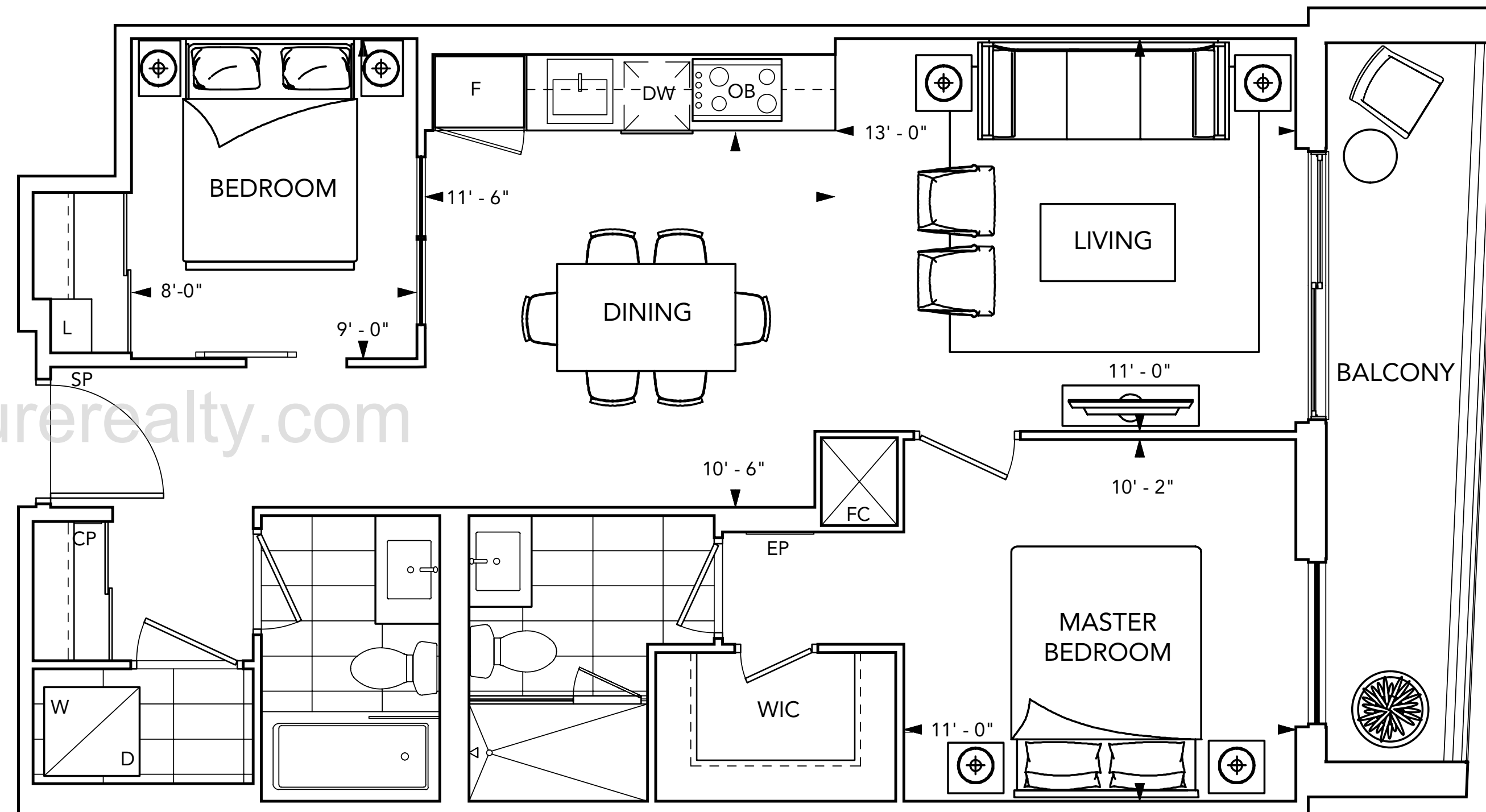
CITY VIEW

SUITE 2B

2 BEDROOM



Floors 3-9

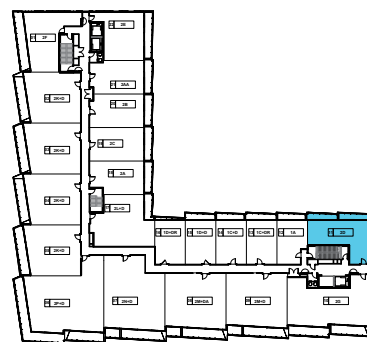




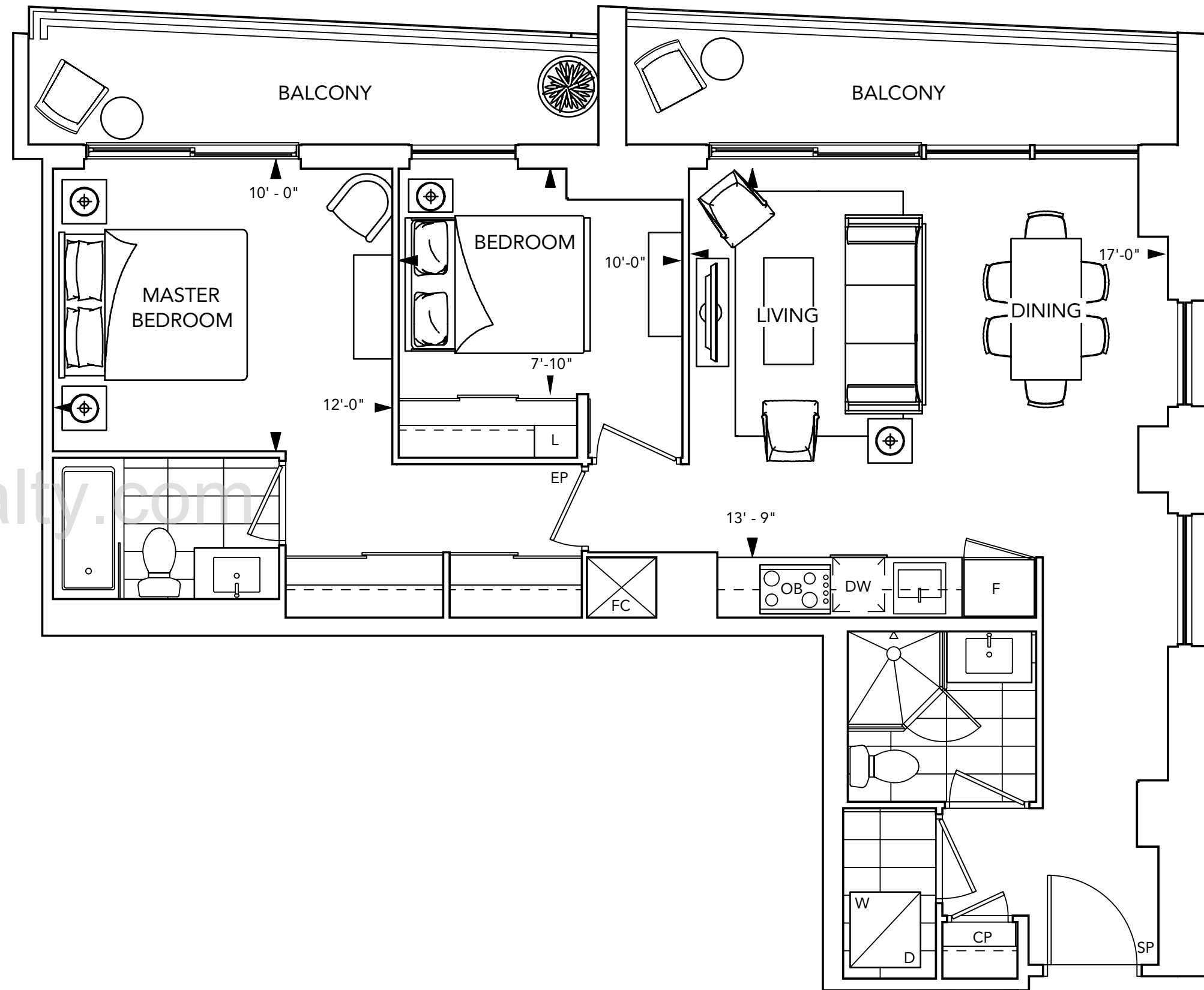
CITY VIEW

SUITE 2D

2 BEDROOM



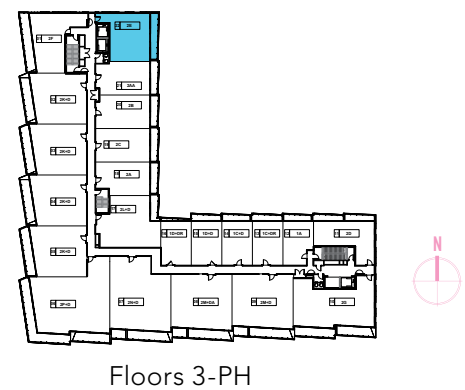
Floors 3-10



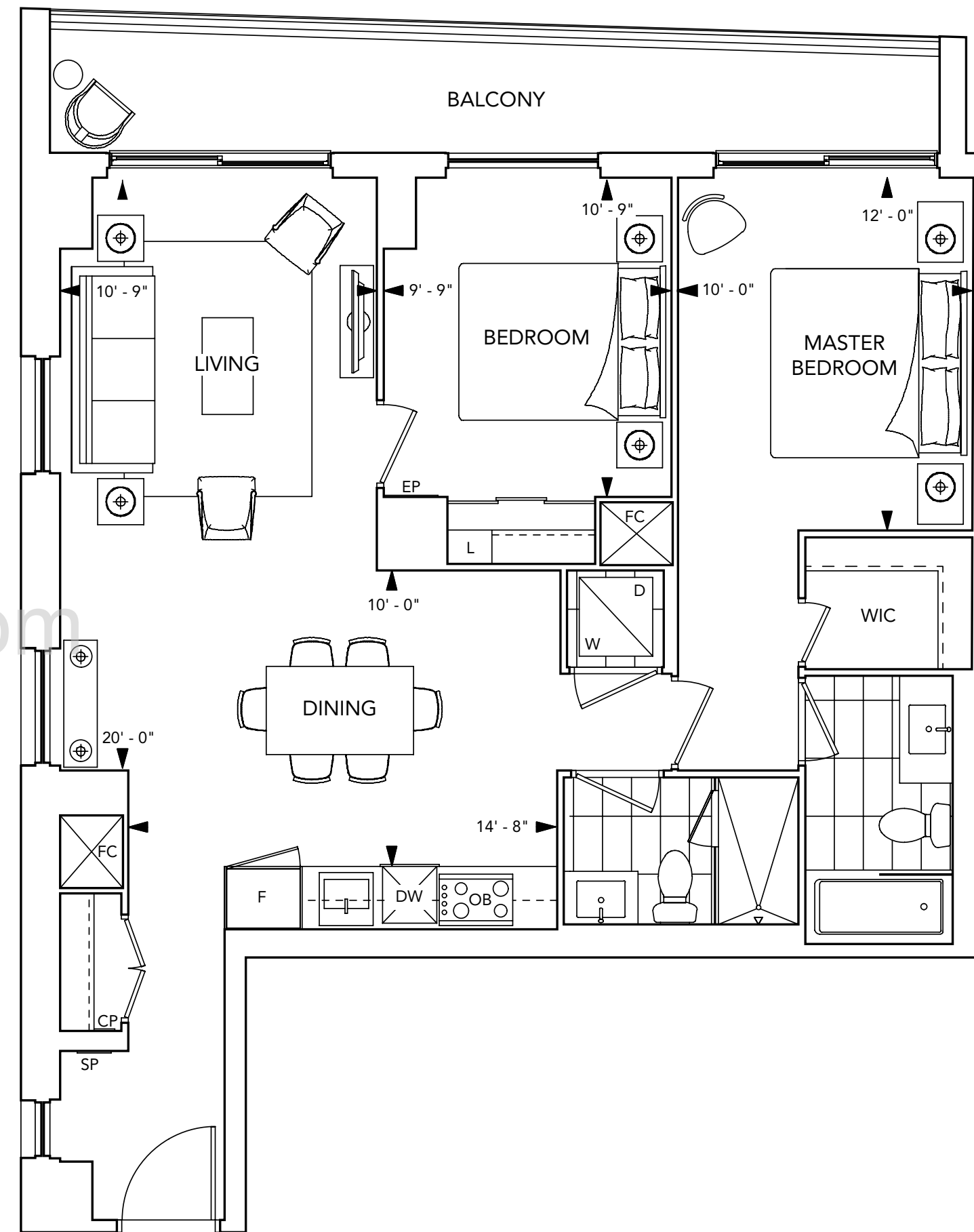


SUITE 2E

2 BEDROOM



www.benchmarksignaturerealty.com

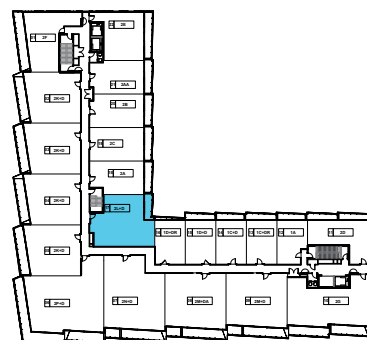




CITY VIEW

SUITE 2L+D

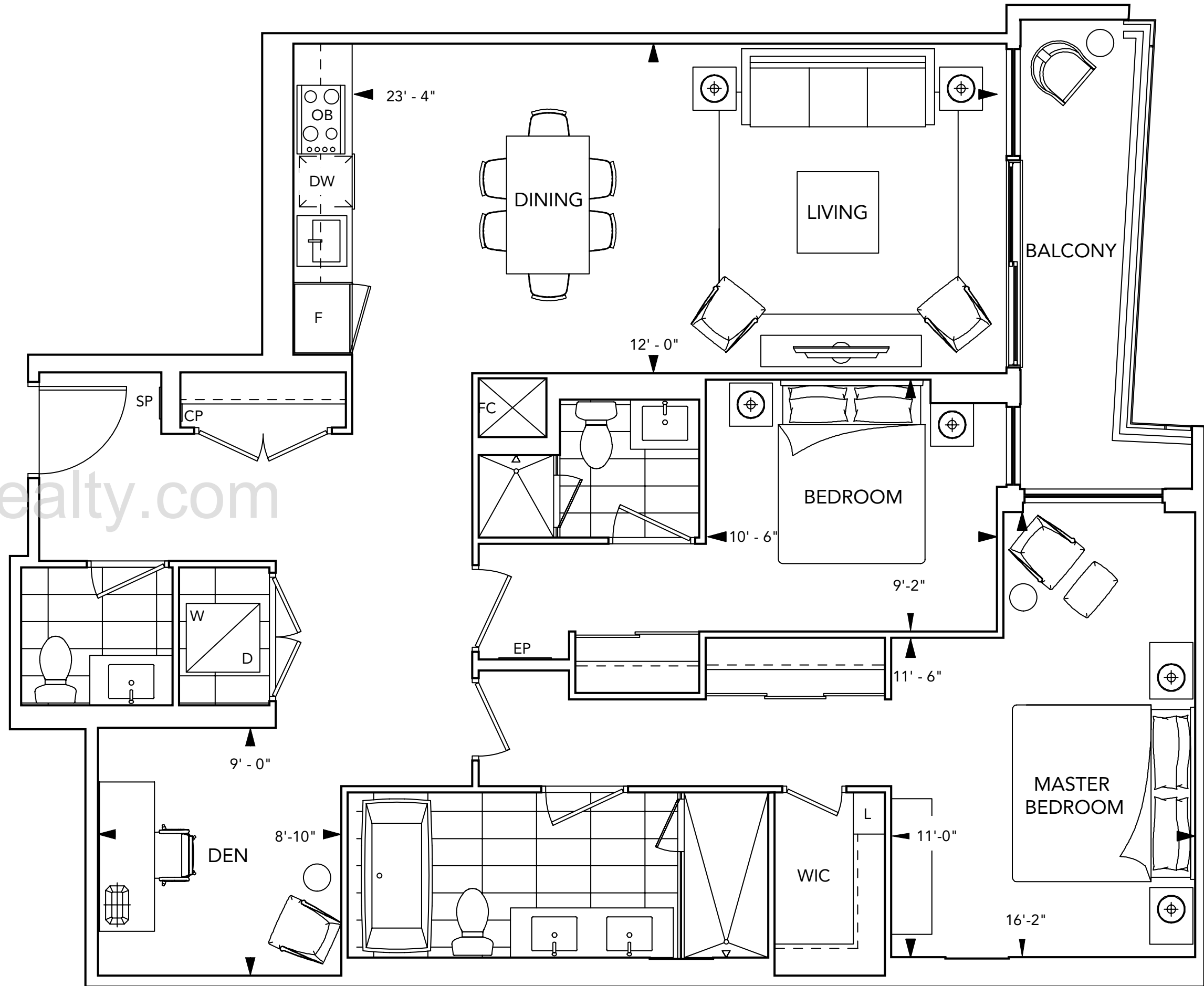
2 BEDROOM + DEN



Floors 3-6



www.benchmarksignaturerealty.com



SUITE FEATURES & FINISHES

GENERAL

- Smooth ceilings painted white in all areas of suite.

FLOOR COVERINGS

- Plank laminate floating floor with acoustic underlay in all rooms excluding bathrooms and laundry.
- Designer selected premium porcelain floor tiles in bathrooms and laundry.

KITCHEN

- Designer kitchen with contemporary, full height flat panel doors complete with built-in appliances. Finishes include matte finish and wood grain laminate.
- Granite or quartz kitchen countertop and matching backsplash with polished single square edge and deep undermount, stainless steel single bowl sink.
- Polished chrome, single lever kitchen faucet with integrated pull down spray.

- 1 bedroom and 1 bedroom plus den suites will feature appliances with:

- Panel ready energy efficient 18" dishwasher
- Energy efficient stainless steel 24" refrigerator with bottom mount freezer
- 24" stainless steel microwave/hood combo
- 24" built-in convection oven in stainless steel finish
- 24" built-in glass ceramic cooktop

- 2 bedroom and 2 bedroom plus den suites will feature appliances with:

- Panel ready energy efficient 24" dishwasher
- Counter depth energy efficient stainless steel 30" refrigerator with bottom mount freezer
- 30" stainless steel microwave/hood combo
- 30" built-in convection oven in stainless steel finish
- 30" built-in glass ceramic cooktop

- Surface mounted lighting in kitchen area.

- Energy saving LED under-cabinet lighting.

BATHROOM(S)

- Custom vanity with white quartz countertop and undermount rectangular basin, featuring contemporary flat panel cabinetry.
- Master ensuite bathroom to feature vanity mirror with integrated lighting and storage cabinet. All other bathrooms to feature vanity mirror with wall sconce lighting above.
- 5'-0" soaker tub with polished chrome single lever faucet and glass enclosure (no door).
- Pressure balanced, temperature controlled chrome shower faucet.
- Porcelain tiles in tub, shower enclosure and on wall.
- Shower recessed light in ceiling of shower stalls and tub.
- Energy efficient, low-flow shower head(s).
- Polished chrome single lever vanity faucet in bathroom(s).
- Low-flow high performance toilet(s).
- Shower stall features frameless glass enclosure with chrome hardware.



Benchmark Signature Realty INC. Brokerage

1020 Denison Street Unit 113

L3R 3W5 Markham Ontario

Tel 905 604 2299 Fax 905 604 0622

<http://www.benchmarksignaturerealty.com>