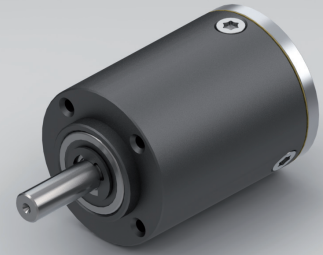


**Standard scope of delivery** Gearbox lubricated for duration of service life, dust-proof package, motor pinion, mounting screws, paper gasket and assembly instructions (adapter plate optional).

Customized versions also available for small quantities.

Stainless steel version on request.

## PLANETARY GEARBOX GPL032



		1-STAGE	2-STAGE	3-STAGE	
<b>Ratio i:1</b>	<b>Max. motor shaft-<math>\varnothing D</math></b>	<b>Ratio i:1</b>	<b>Max. motor shaft-<math>\varnothing D</math></b>	<b>Ratio i:1</b>	<b>Max. motor shaft-<math>\varnothing D</math></b>
				64	6
				72	6
		81	6		
		12.08	6	100	6
		16	6	130	6
		18	6	144	6
		20.8	6	175.78	5
		25	6	200	6
		29	6	225	5
4	6	32	6	256	6
4.5	5	36	5	288	5
5.2	4	41.6	4	332.8	4
6.25	3	50	3	400	3
8	2	64	2	512	2

Rated torque continuous	Type Standard	Type R	Nm	0.4	2	6
Rated torque intermittent	Type Standard	Type R	Nm	0.8	4	12
Rated torque continuous	Type V	Type S	Nm	0.8	4	6
Rated torque intermittent	Type V	Type S	Nm	1.6	6	12
Max. efficiency at rated torque			%	90	85	80
Average backlash at no load	Type Standard	Type V	arcmin $\leq$	20	35	50
Average backlash at no load	Type R		arcmin $\leq$	12	20	30
Average backlash at no load	Type S		arcmin $\leq$	8	12	15
Weight without adapter plate			g	135	180	250
Dimension L			mm	29	38	47
Dimension A			mm		5.25	
Dimension B			mm		16.25	
Max. radial load	$F_R$	8 mm from shaft end	N		80	
Max. axial load	$F_A$		N		65	
Max. continuous rated speed at drive			min <sup>-1</sup>		5000	
Max. intermittent rated speed at drive			min <sup>-1</sup>		8000	
Temperature range	Type Standard	Type R	°C		-30 / +90	
Temperature range	Type V	Type S	°C		-40 / +90	

Type V = heavy duty version | Type R = reduced backlash version | Type S = low backlash version

Changes reserved © GYSIN AG | 05/2015