



1-855-358-7825
www.atp4you.net

ATP ND06

- Deep tread to resist stone drilling
- Designed for excellent durability and traction
- Improved design for outstanding wear for over-the-road service
- Premium closed shoulder steel radial drive position



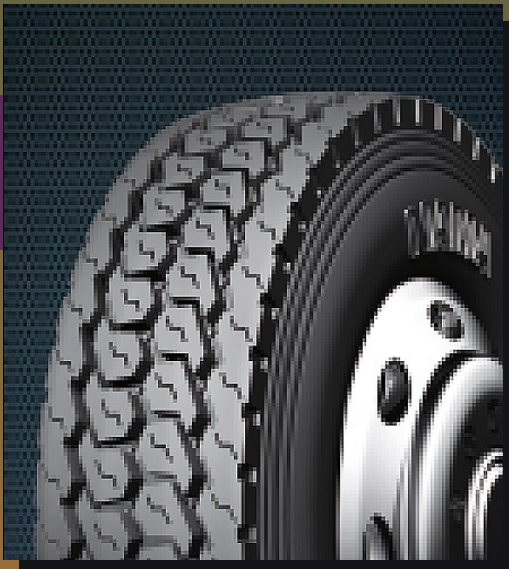
SIZE	RIM	PLY RATING	SPEED SYMBOL	TIRE DIMENSION (mm)		LOAD INDEX		INFLATION PRESSURE SINGLE/DUAL		LOAD CAPACITY SINGLE/DUAL	
				SECTION WIDTH	OVERALL DIAMETER	SINGLE	DUAL	KPA	PSI	KG	LBS
11R22.5	8.25	14	M	1065	279	144	142	720	105	2800 / 2575	6175 / 5675
		16	M			146	143	830	120	3000 / 2725	6610 / 6005
11R24.5	8.25	14	M	1116	279	146	143	720	105	3000 / 2725	6610 / 6005
		16	M			149	146	830	120	3250 / 3000	7160 / 6610
285/75R24.5	8.25	14	L/M	1056	283	144	141	760	110	2800 / 2575	6175 / 5675
		16	L/M			146	143	830	120	3000 / 2725	6610 / 6005
295/75R22.5	9.00	14	L/M	1020	298	144	141	760	110	2800 / 2575	6175 / 5675
		16	L/M			146	143	830	120	3000 / 2725	6610 / 6005

Warehouse locations: Los Angeles, Phoenix, Tucson, Grand Prairie, Seattle, Boise



1-855-358-7825
www.atp4you.net

ATP ND20



- Mixed pattern with excellent ground grasping and braking performance
- Low-heating, excellent abrasion resistance and energy-efficient
- Applicable to the driving wheels of the truck



SIZE	RIM	PLY RATING	SPEED SYMBOL	TIRE DIMENSION (mm)		LOAD INDEX		INFLATION PRESSURE SINGLE/DUAL		LOAD CAPACITY SINGLE/DUAL	
				SECTION WIDTH	OVERALL DIAMETER	SINGLE	DUAL	KPA	PSI	KG	LBS
11R22.5	8.25	14	M	1065	279	144	142	720	105	2800 / 2575	6175 / 5675
		16	M			146	143	830	120	3000 / 2725	6610 / 6005
11R24.5	8.25	14	M	1116	279	146	143	720	105	3000 / 2725	6610 / 6005
		16	M			149	146	830	120	3250 / 3000	7160 / 6610
285/75R24.5	8.25	14	L	1056	283	144	141	760	110	2800 / 2575	6175 / 5675
		16	L			146	143	830	120	3000 / 2725	6610 / 6005
295/75R22.5	9.00	14	L	1020	298	144	141	760	110	2800 / 2575	6175 / 5675
		16	L			146	143	830	120	3000 / 2725	6610 / 6005

Warehouse locations: Los Angeles, Phoenix, Tucson, Grand Prairie, Seattle, Boise



1-855-358-7825
www.atp4you.net

ATP NF25

- Mixed highway, all position heavy duty rib tire for on//off highway application
- Special tread compound designed for lower heating up, excellent puncture and cut resistance and minimized gasoline consumption
- Super steel belt carcass construction enhances casing strength and maximizes tire load capacity



SIZE	RIM	PLY RATING	SPEED SYMBOL	TIRE DIMENSION (mm)		LOAD INDEX		INFLATION PRESSURE SINGLE/DUAL		LOAD CAPACITY SINGLE/DUAL	
				SECTION WIDTH	OVERALL DIAMETER	SINGLE	DUAL	KPA	PSI	KG	LBS
11R22.5	8.25	14	M	1054	279	144	142	720	105	2800 / 2650	6175 / 5675
		16	M			146	143	830	120	3000 / 2725	6610 / 6005
11R24.5	8.25	14	L	1104	279	146	143	720	105	3000 / 2725	6610 / 6005
		16	L			149	146	720	105	3250 / 3000	7160 / 6610
285/75R24.5	9.00	14	L	1050	283	144	141	760	110	2800 / 2575	6175 / 5675
		16	L			147	144	830	120	3000 / 2725	6610 / 6005
295/75R22.5	8.25	14	L	1014	298	144	141	760	110	2800 / 2575	6175 / 5675
		16	L			146	143	830	120	3000 / 2725	6610 / 6005

Warehouse locations: Los Angeles, Phoenix, Tucson, Grand Prairie, Seattle, Boise