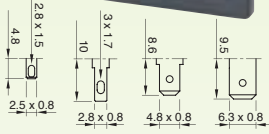


STS

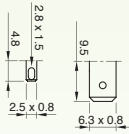
STS3

C14
Class I
T 70 °C



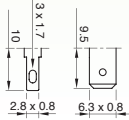
STS5

C16
Class I
T 120 °C



STS2

C18
Class II
T 70 °C



10 A / 250 VAC
EN 60320

10 A / 250 VAC
15 A / 125 VAC
UL 498

TYPICAL APPLICATIONS

Coffee machine, appliance inlet for cold/warm conditions with/without earthing contact, for "snap in" fastening

WIRING DIAGRAMAS

- 2-pole
- 2-pole + earth

CUT OUT

27x20 mm

GWT

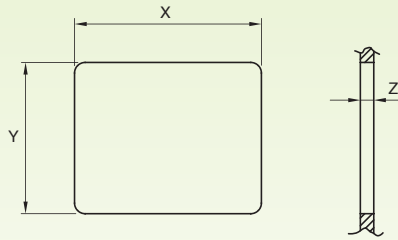
850 °C

GWT NO FLAME (<2sec)

750 °C on demand

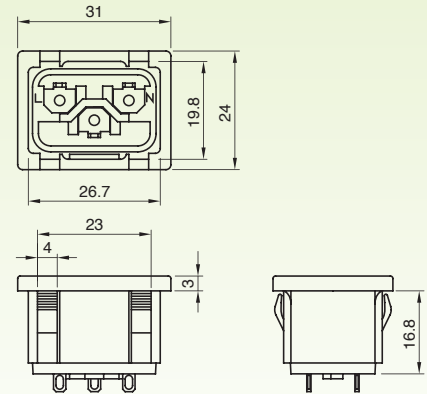


CUT OUT



Z	X	Y
1 ... 1,8	27	20,0 +0,2
1,8 ... 3,0	27	20,2 +0,2

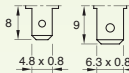
DRAWING



SFS

SFS2

H
Class II
T 70 °C



SFS3

F
Class I
T 70 °C



10 A / 250 VAC
EN 60320

10 A / 250 VAC
15 A / 125 VAC
UL 498

TYPICAL APPLICATIONS

Small appliances, appliance outlet for cold conditions with/without earthing contact, for "snap in" fastening

WIRING DIAGRAMAS

- 2-pole
- 2-pole + earth

CUT OUT

32x25 mm

GWT

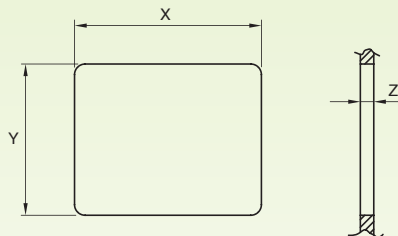
850 °C

GWT NO FLAME (<2sec)

750 °C on demand



CUT OUT



Z	X	Y
1 ... 1,8	32,5	25,0 +0,2
1,9 ... 3,0	32,5	25,2 +0,2

DRAWING

