



SPM

TYPICAL APPLICATIONS

Washing

FUNCTIONS

- SPST, momentary or not
- SPDT
- DPST, momentary or not
- DPDT

CYCLE No.

50.000

CUT OUT

Rear panel

AMBIENT TEMPERATURE

125 °C

GWT

850 °C

GWT NO FLAME (<2sec)

750 °C (Rating C)

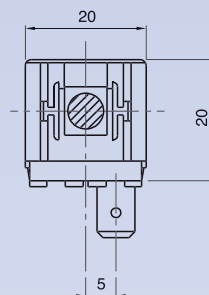
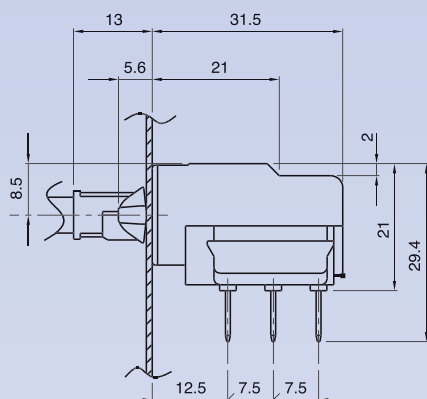


S P M

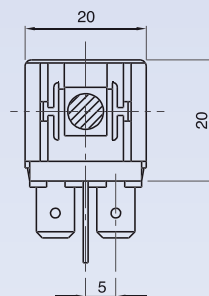
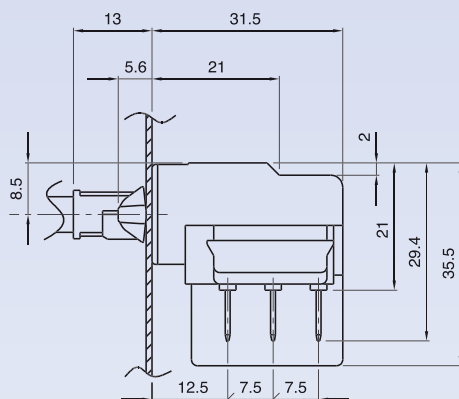
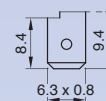
?

DRAWING

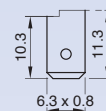
TERMINAL



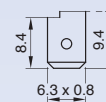
4

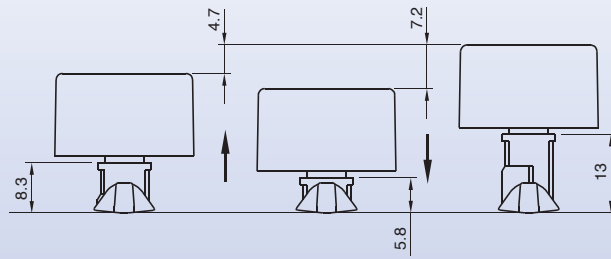
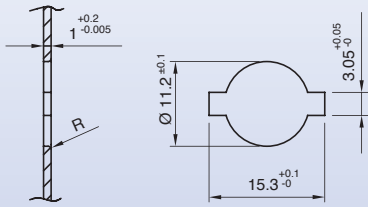


1



2



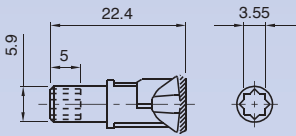


S	P	M	TERMINAL	SHAFT	FUNCTION	RATING	0	0	0

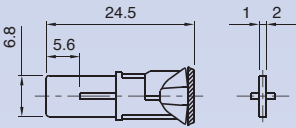
?

SHAFT

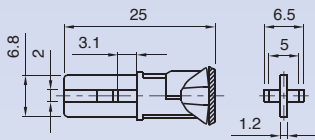
C



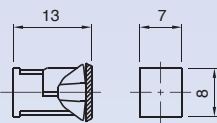
E



M



P



?

FUNCTION

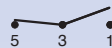
1



2



3



4



7



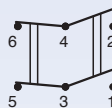
C



K



L



?

RATING

4

16 (8) A / 250 VAC
10 (6) A / 250 VAC - 5E4
10 A / 400 VAC
T125 °C
EN 61058

C

16 (8) A / 250 VAC
10 A / 400 VAC
10 (6) A / 250 VAC - 5E4
T125 °C
EN 61058

20 A / 125 VAC
16 A / 250 VAC
1/3 HP - 125 VAC
3/4 HP - 250 VAC
T65 °C
UL 1054
CSA C22.2

0

0

0