



Conrail Speed Message

To: H. J. Barnes / JJC

From: J. A. Hawley / JFM

Subject: INTERMODAL FACILITY, COLUMBUS, OHIO
— FRAME TO WALL CONNECTION DETAILS

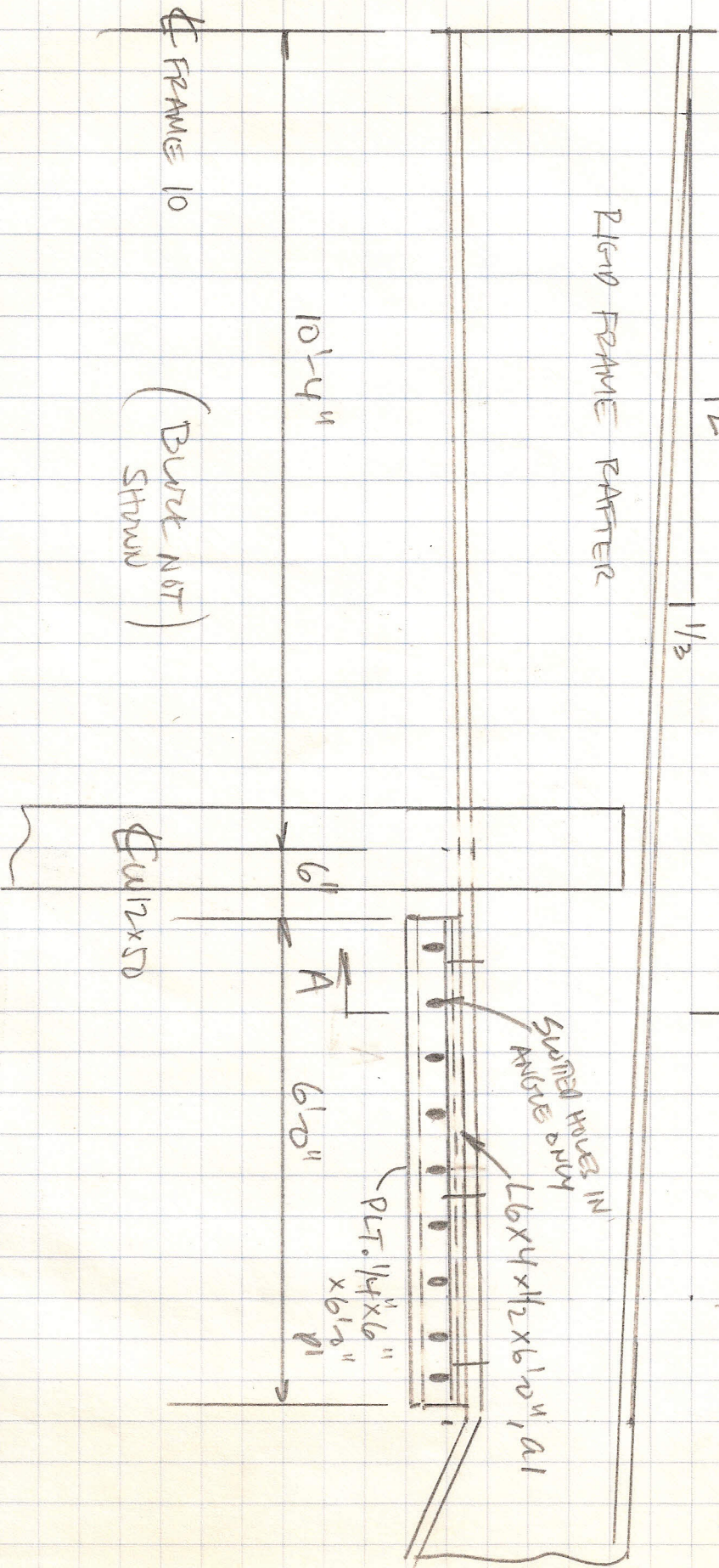
Date: APRIL 21 1986

ATTACHED ARE THE REMAINING DETAILS (4 SHEETS),
TO GO WITH DETAILS SUBMITTED 4-18-86. THESE
~~ARE~~ 4 SHEETS ARE FOR THE CONNECTION BETWEEN
FRAME 10 AND THE SOUTH ENDWALL.

ALSO, SEE ATTACHED COPY OF MESSAGE SENT
TO W.C. HUMPHREYS, 3-4-86, NOTING THAT A GAP
MUST BE PROVIDED BELOW LINTER BEAMS. THIS IS ACTUALLY
REQUIRED ONLY FOR ~~THE~~ BEAMS FROM COLS. 7 TO 10 AND THE
34' WIDE DOOR IN THE SOUTH ENDWALL.

G - 3 (New) 7-84

Signed: J. A. Hawley / JFM



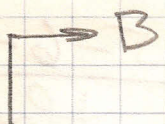
CONTRACTOR TO VERIFY THAT
 RURUN WILL NOT CONTACT
 WINDOW COLUMN IF IT
 DEPARTS 3" VERTICALLY
 DOWNWARD (TYP. BOLT COLS.)

ELEVATION - FRAME 10

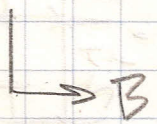
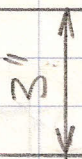
LOOKING NORTH

INTERMODAL FACILITY
 COLUMBUS, OHIO

JFM



8" PURCH
(A 3/4" DIA)



8" FLANGES, T & B

RIGID FRAME
RAFTER
(FRAME 10)

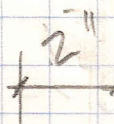
1/2" MASONRY
WALL

1 1/4"

1 15/16" ±

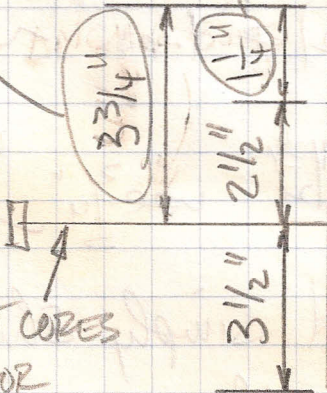
CHANGED FROM
4 1/2" JFM

CHANGED FROM 2" JFM



3, 5/8" A325 HS BOLTS, 2" LONG
(FIELD DRILL HOLES
IN RAFTER
FLANGE)

L6x4x1/2x6'-0", a1
(SEE ELEV.)



1/2" DIA. HEADED ANCHOR BOLT x 8" LONG
W/ NUT & WASHER 2" PROJECTION

PLT. 1/4" x 6" x 6'-0", p1

SECT. A-A

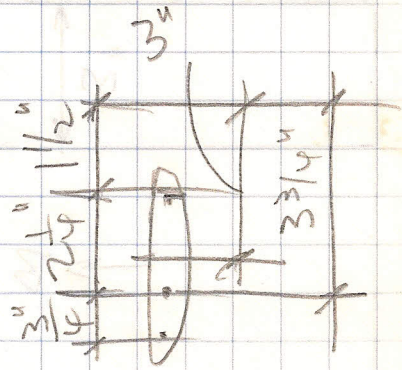
1 1/2" THREAD
(HAND TIGHTEN)
ONLY

NOTE: GRANT CORES
FOR ANCHOR
BOLTS

DEFLECTIONS as per Bill Perry, 5-6-86
 (over the
 phase)

Looking at south endwall from outside
 Starting @ right side (COL. LINE A)

12' in \rightarrow 1.59" down } includes crane
 21' in \rightarrow 2.57" down }
 ridge \rightarrow 2.56"



From left side (COL. LINE D)

12' in \rightarrow .82" down
 21' in \rightarrow 2.06" "

Max. upward defl. (@ ridge) = .9"

(By interpolation)

— need deflectors @ \sim 18' from right side

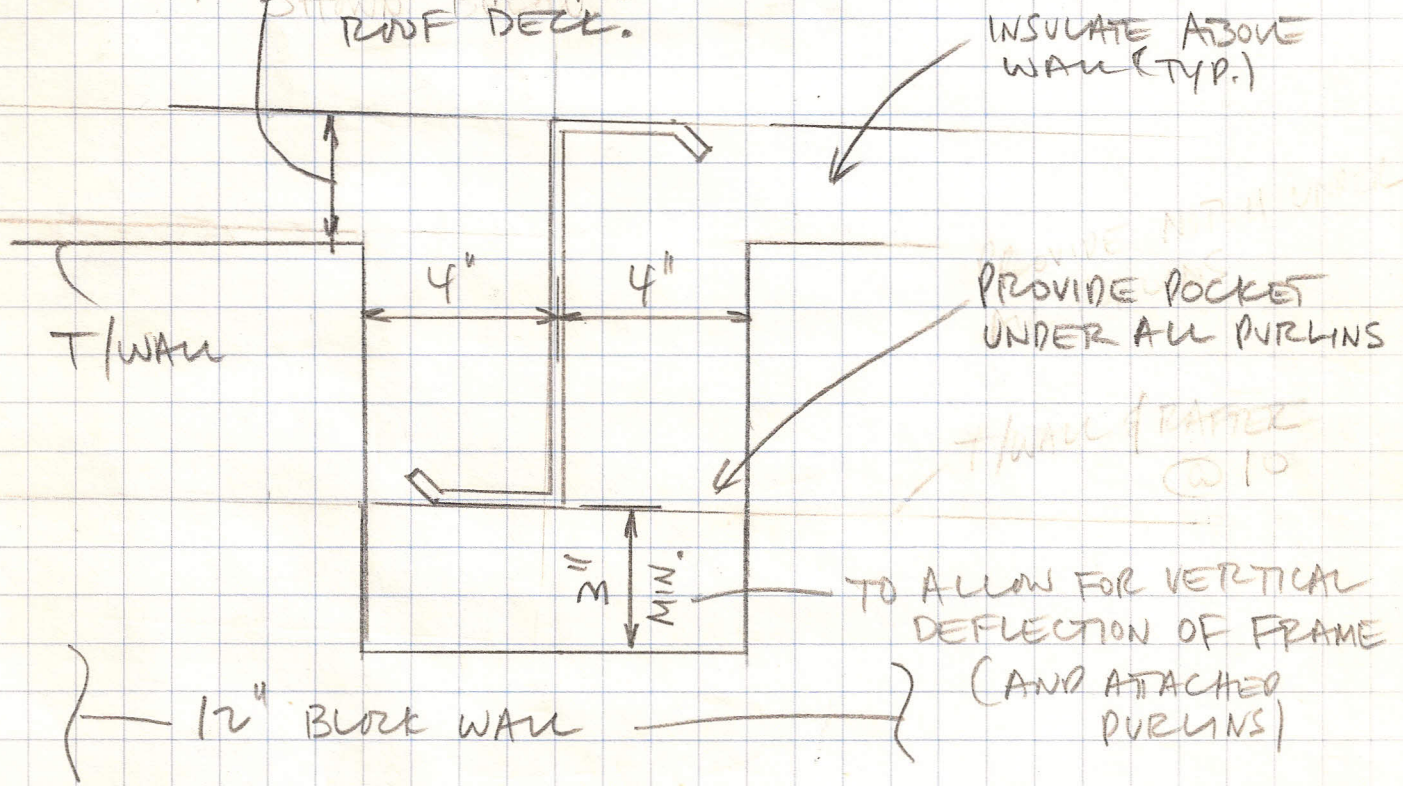
Downward $\sim .82 + \left(\frac{6}{9}\right)(2.06 - .82) = 1.65" \sim \underline{\underline{1\ 3/4"}}$ ✓

Upward $\sim \left(\frac{18}{30}\right) \cdot .9 = .54" \sim \frac{1}{2}"$ use $\underline{\underline{3/4"}}$ ✓

\therefore Can easily use 3" slot and simply shift location of anchor bolt in wall.

NOTE: FOR FLASHING TREATMENT, SEE SH. 10.

NOTE: LOWER GABLE ANGLE MUST BE USED TO ALLOW FLASHING TO MEET WITH FLARE AND BE SET INTO HORIZONTAL LEG OF THE CHANNEL. KEEP TOP OF WALL A MIN. OF 3" AND MAX. OF 5" BELOW ROOF DECK.



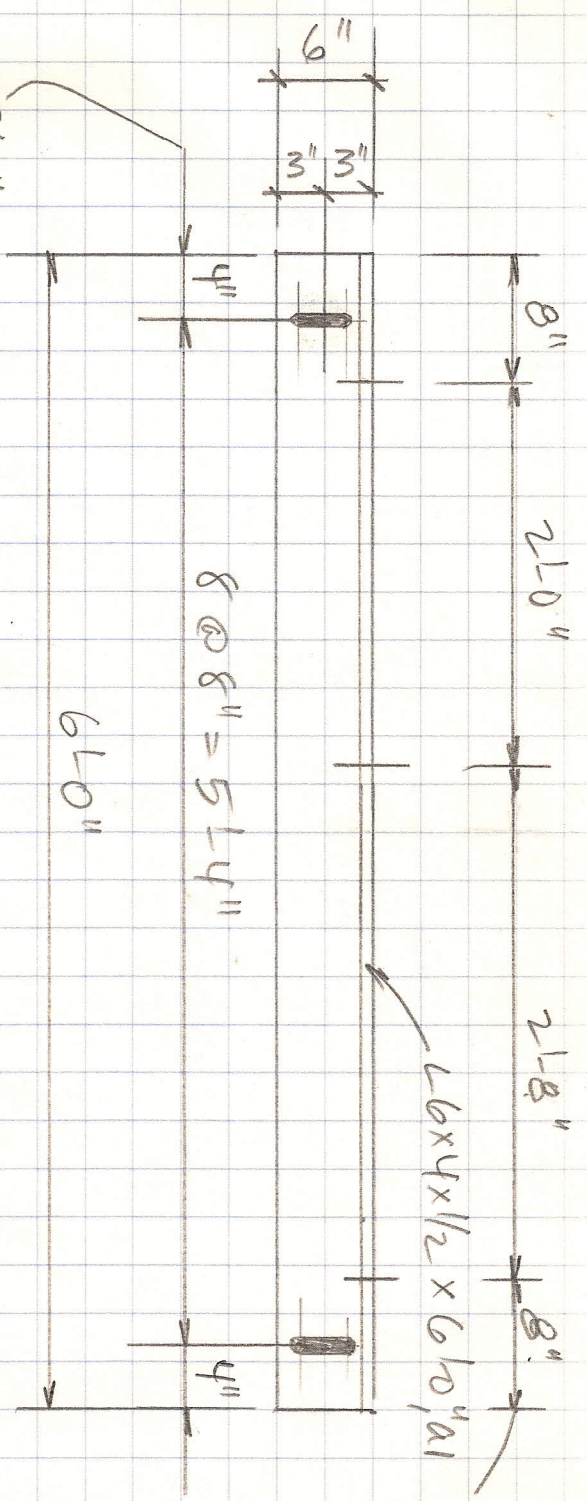
SECT. B-B

CLEARANCE REQUIREMENT FOR PURLINS OVER SOUTH ENDWALL

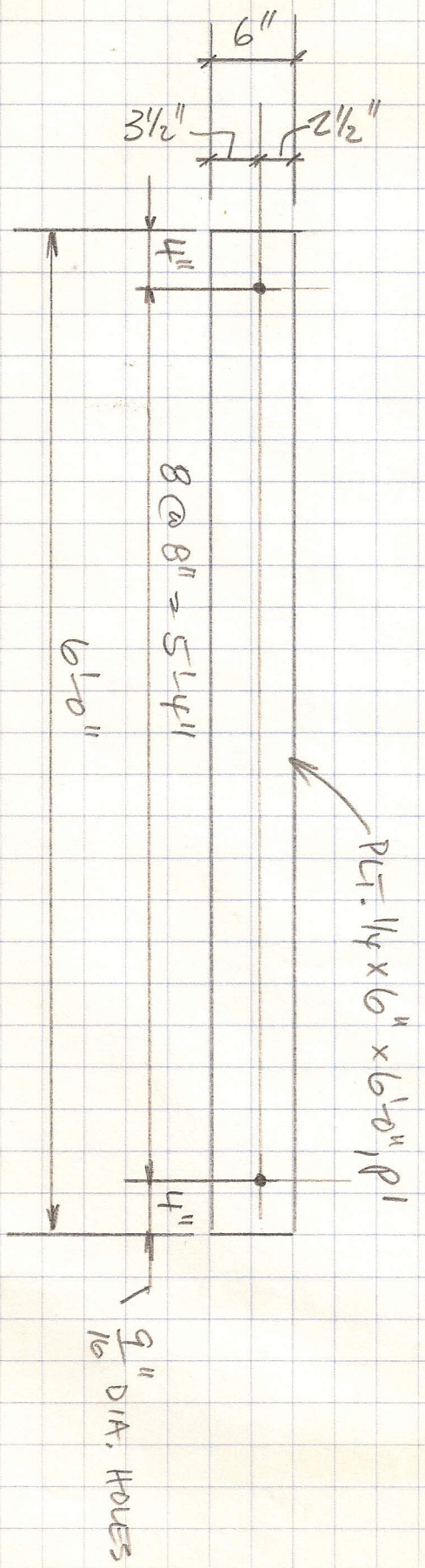
INTERMODAL FACILITY
 COLUMBUS, OHIO

JFM

9/16" DIA. HOLES SPACED 3"
 FOR 1/2" DIA. A307 HEADED
 ANCHOR BOLTS (HARD TIGHTEN ONLY)
 - ANCHORS MUST BE ABLE TO MOVE
 DOWN VERTICALLY



1 1/16" DIA. HOLES
 FOR 5/8" DIA.
 HS BOLTS, A325
 W/ NUT & WASHER
 - 2" FROM BASE
 OF ANCHOR



9/16" DIA. HOLES

A1

P1