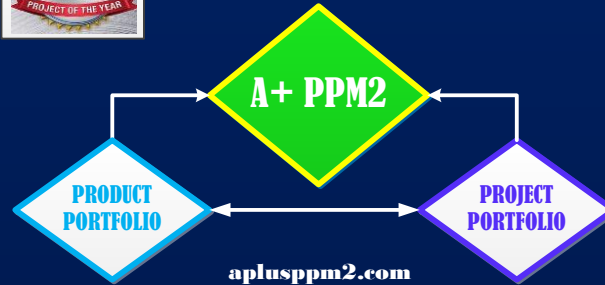




**PRODUCTS DESIGNED & DEVELOPED BY  
DENNIS B. WIGGINS, PPM EXPERT**

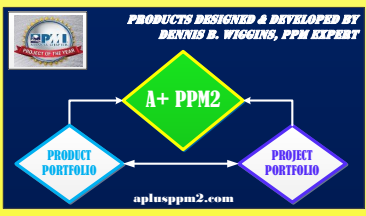


# **ANALYTICS PLUS PPM2, LLC**

**WARNING: STOP BURNING  
PMO GOVERNANCE  
WORKING CAPITAL FUNDS**

**QUALITY IMPROVEMENT PRODUCTIVITY (QIP) TRANSPARENCY  
FOR PRODUCT & PROJECT PORTFOLIO MANAGEMENT \$'s**

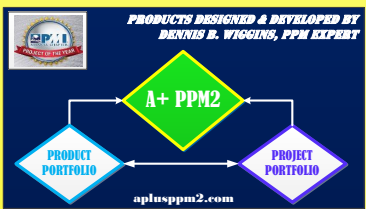




# ANALYTICS PLUS PMO EXECUTIVE (A+ PMO EXEC)

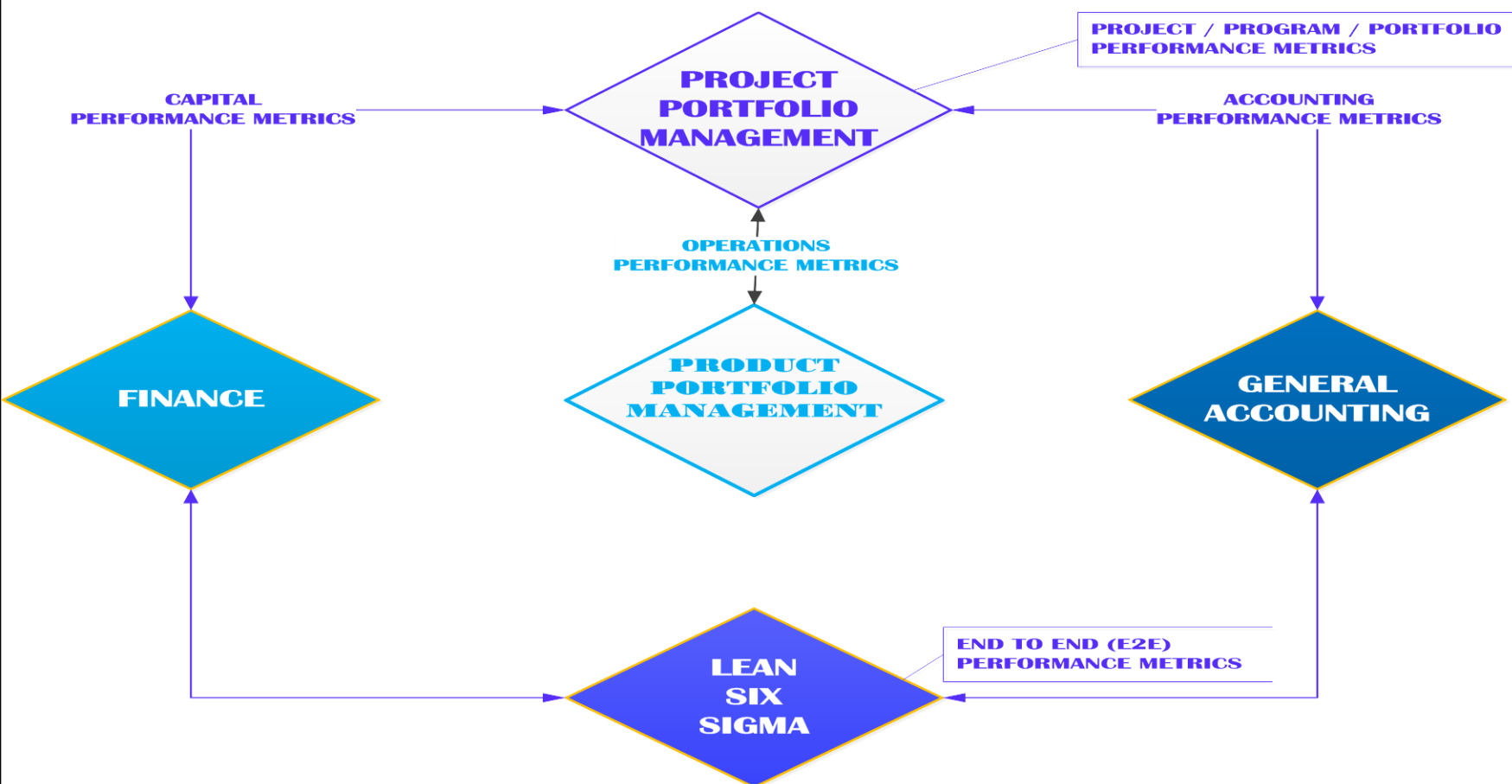


# CROSS FUNCTIONAL DISCIPLINES INCLUSION



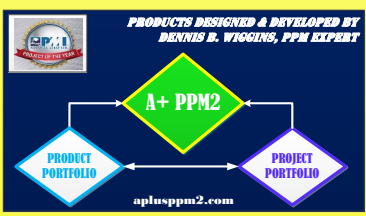
# ANALYTICS PLUS PPM2 (A+ PPM2)

## CENTRALIZATION OF DISCIPLINES



**FUNCTIONAL DISCIPLINE INTEGRATED INTO  
PRODUCT / PROJECT PORTFOLIO MODELS**

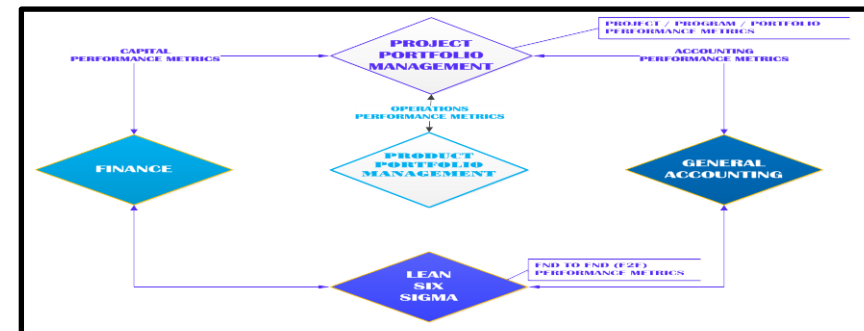




# **ANALYTICS PLUS PPM2 (A+ PPM2)**

## **SEVEN (7) A+ MODELS PPM INTEGRATED**

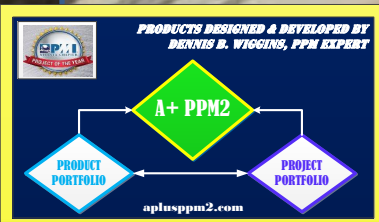
- **OUR A+ MODELS ARE A REPOSITORY OF ALL KEY PERFORMANCE METRICS ASSOCIATED WITH DISCIPLINES & FUNCTIONAL RESPONSIBILITIES WITH NO DUPLICATION OF EFFORT IN ORGANIZATION HEIRARCHY STRUCTURE FOR CHIEF INFORMATION OFFICER**
- **THE VALUE PROPOSITION EQUALS CROSS FUNCTIONAL INTEGRATION & MINIMAL IMPLEMENTATION TIME & COSTS**



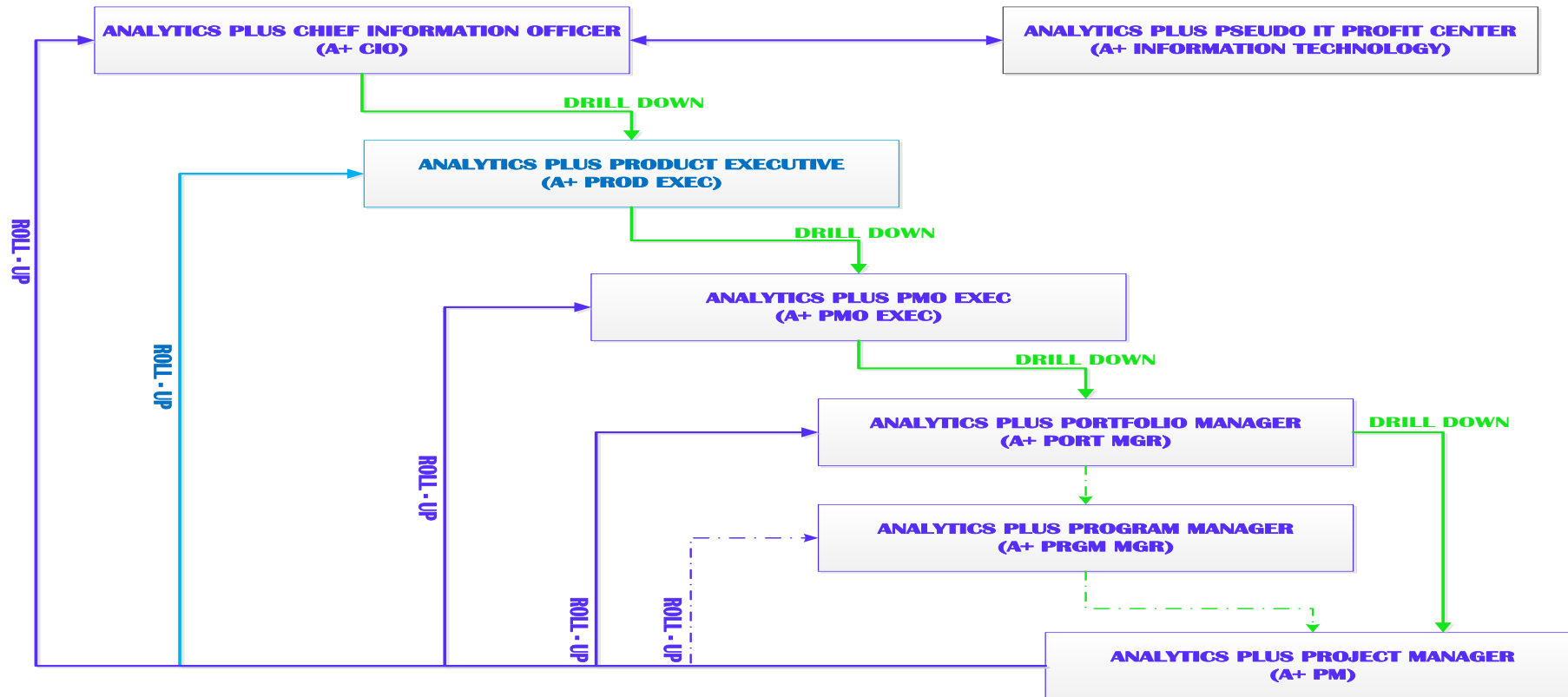
**SPEED, SIMPLICITY & SELF CONFIDENCE  
WITH A+ MODELS = TURNKEY SOLUTION**

# PMO ORGANIZATION HIERARCHY STRUCTURE





# ANALYTICS PLUS PPM2 (A+ PPM2) HIERARCHY FUNCTIONAL MODELS




**Functional Hierarchy Integrated into  
Product / Project Portfolio Models**


# ANALYTICS PLUS PMO EXECUTIVE

## (A+ PMO EXEC) MODEL





PRODUCTS DESIGNED & DEVELOPED BY  
DENNIS E. WIGGINS, PPM EXPERT



PRODUCT PORTFOLIO

PROJECT PORTFOLIO

aplusppm2.com

# A+ PMO EXEC

# PMO GOVERNANCE KPI METRICS

A+ PMO EXEC V6.0 ORGANIZATION

( expand all | collapse all )

PMO GOVERNANCE ANALYTICS

PMO DEMAND MANAGEMENT ANALYTICS

PMO TACTICAL ANALYTICS

PORTFOLIO & PROJECT CONSOLIDATION

PORTFOLIO BUDGET AT COMPLETION (BAC)

PORTFOLIO DAYS (PIF-D)

PORTFOLIO ACTUAL COSTS (PIF-AC)

PORTFOLIO FORECASTS (EAC)

PORTFOLIO VARIANCE (VAC)

PORTFOLIO ESTIMATE TO COMPLETE (ETC)

PORTFOLIO TO COMPLETE PERFORMANCE INDEX (TCPI - BAC)

PORTFOLIO TO COMPLETE PERFORMANCE INDEX (TCPI - EAC)

PORTFOLIO PLANNED VALUE % COMPLETE

PORTFOLIO ACTUAL % COMPLETE

PORTFOLIO BURN RATE % COMPLETE

PORTFOLIO PLANNED VALUE (PV) \$'s

PORTFOLIO EARNED VALUE (EV) \$'s

PORTFOLIO COST VARIANCE (CV) \$'s

PORTFOLIO SCHEDULE VARIANCE (SV) \$'s

PORTFOLIO COST PERFORMANCE INDEX %

PORTFOLIO SCHEDULE PERFORMANCE INDEX %

PORTFOLIO COST SCHEDULE PERFORMANCE INDEX %

PMO ASSET ANALYTICS

PMO PSEUDO PROFIT CENTER ANALYTICS

PMO C-LEVEL THRESHOLD ANALYTICS

Data Used in Calculations

ANALYTICS PLUS PPM2, LLC >> A+ CIO BASE MODEL >> PPM2: A+ CIO V6.0 - PSEUDO INFORMATION TECHNOLOGY PROFIT CENTER (PPC) >> PPM2: A+ CIO V6.0 ORGANIZATION >> A+ PMO EXEC V6.0 ORGANIZATION

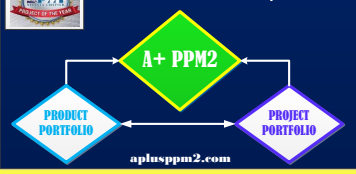
ID	Name	Type	Weight	Score
187724	PORTFOLIO & PROJECT CONSOLIDATION	Perspective	5.26%	5
279376	PORTFOLIO ACTUAL % COMPLETE	Perspective	5.26%	5.97
149825	PORTFOLIO ACTUAL COSTS (PIF-AC)	Perspective	5.26%	5.79
149805	PORTFOLIO BUDGET AT COMPLETION (BAC)	Perspective	5.26%	5
279389	PORTFOLIO BURN RATE % COMPLETE	Perspective	5.26%	5.37
279544	PORTFOLIO COST PERFORMANCE INDEX %	Perspective	5.26%	0
279570	PORTFOLIO COST SCHEDULE PERFORMANCE INDEX %	Perspective	5.26%	0
279516	PORTFOLIO COST VARIANCE (CV) \$'s	Perspective	5.26%	1.69
192099	PORTFOLIO DAYS (PIF-D)	Perspective	5.26%	0
279416	PORTFOLIO EARNED VALUE (EV) \$'s	Perspective	5.26%	0.6
186081	PORTFOLIO ESTIMATE TO COMPLETE (ETC)	Perspective	5.26%	0
149857	PORTFOLIO FORECASTS (EAC)	Perspective	5.26%	5
279375	PORTFOLIO PLANNED VALUE % COMPLETE	Perspective	5.26%	5
279402	PORTFOLIO PLANNED VALUE (PV) \$'s	Perspective	5.26%	5
279557	PORTFOLIO SCHEDULE PERFORMANCE INDEX %	Perspective	5.26%	0
279530	PORTFOLIO SCHEDULE VARIANCE (SV) \$'s	Perspective	5.26%	0.97
279336	PORTFOLIO TO COMPLETE PERFORMANCE INDEX (TCPI - BAC)	Perspective	5.26%	9.43
279350	PORTFOLIO TO COMPLETE PERFORMANCE INDEX (TCPI - EAC)	Perspective	5.26%	9.43
186172	PORTFOLIO VARIANCE (VAC)	Perspective	5.26%	5

A+ PMO EXEC = CONTRIBUTION TO

PMO GOVERNANCE TRANSPARENCY!



PRODUCTS DESIGNED & DEVELOPED BY  
DENNIS B. WIGGINS, PPM EXPERT

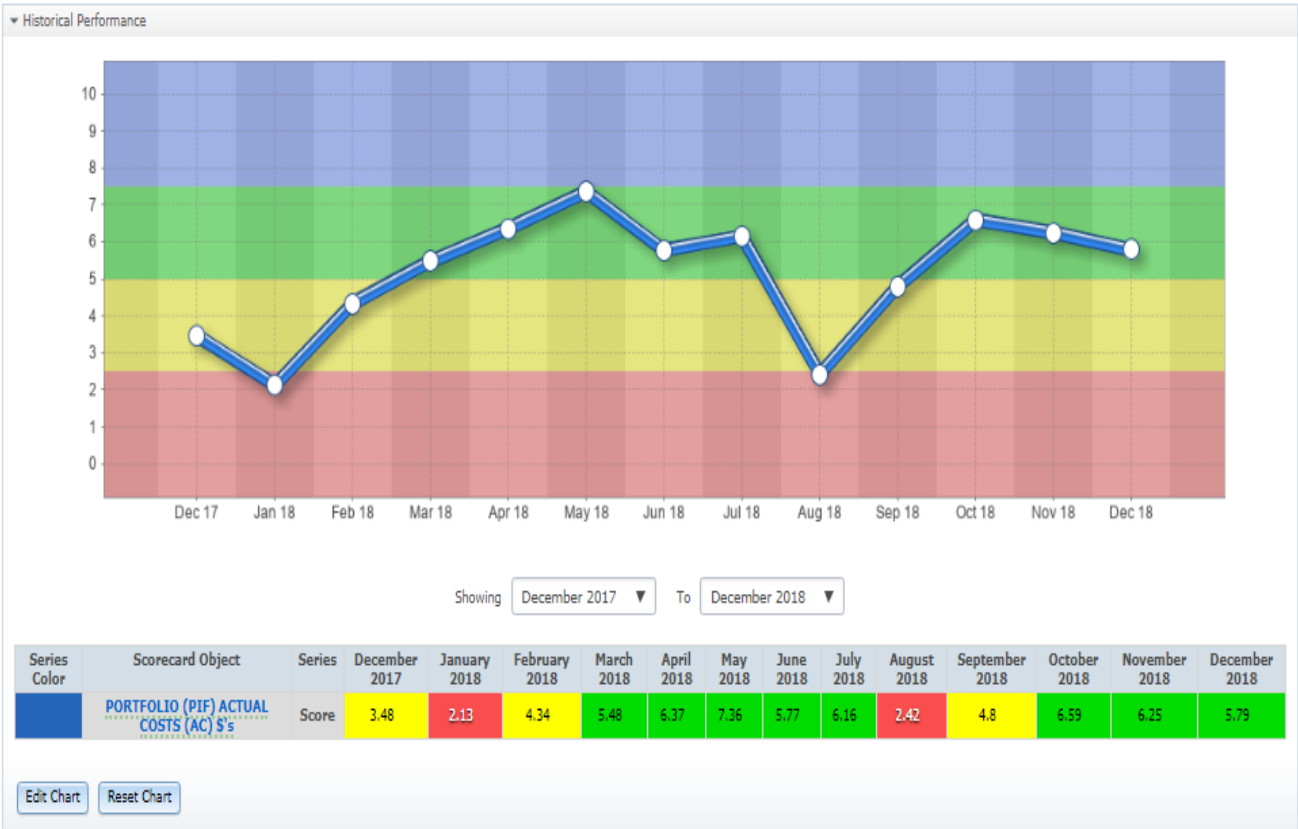


# A+ PMO EXEC PMO GOVERNANCE KPI METRICS

A+ PMO EXEC V6.0 ORGANIZATION

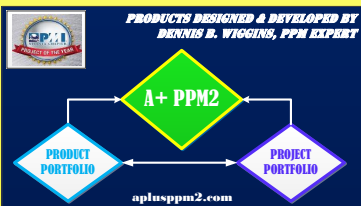
( expand all | collapse all )

- PMO GOVERNANCE ANALYTICS
  - PMO DEMAND MANAGEMENT ANALYTICS
  - PMO TACTICAL ANALYTICS
    - PORTFOLIO & PROJECT CONSOLIDATION
    - PORTFOLIO BUDGET AT COMPLETION (BAC)
    - PORTFOLIO DAYS (PIF-D)
    - PORTFOLIO ACTUAL COSTS (PIF-AC)
    - PORTFOLIO (PIF) ACTUAL COSTS (AC) \$'s**
      - 1. PORTFOLIO NAME (P1 - P12) - PIF AC \$'s
      - 2. PORTFOLIO NAME (P13 - P24) - PIF AC \$'s
      - 3. PORTFOLIO NAME (P25 - P36) - PIF AC \$'s
      - 4. PORTFOLIO NAME (P37 - P48) - PIF AC \$'s
      - 5. PORTFOLIO NAME (P49 - P60) - PIF AC \$'s
      - 6. PORTFOLIO NAME (P61 - P72) - PIF AC \$'s
      - 7. PORTFOLIO NAME (P73 - P84) - PIF AC \$'s
      - 8. PORTFOLIO NAME (P85 - P96) - PIF AC \$'s
      - 9. PORTFOLIO NAME (P97 - P108) - PIF AC \$'s
      - 10. PORTFOLIO NAME (P109 - P120) - PIF AC \$'s
      - PMO GOVERNANCE: TOTAL PIF AC \$'s
      - PMO GOVERNANCE: AVG PIF AC \$'s
    - PORTFOLIO FORECASTS (EAC)
    - PORTFOLIO VARIANCE (VAC)
    - PORTFOLIO ESTIMATE TO COMPLETE (ETC)
    - PORTFOLIO TO COMPLETE PERFORMANCE INDEX (TCPI - B)
    - PORTFOLIO TO COMPLETE PERFORMANCE INDEX (TCPI - E)



**A+ PMO EXEC = CONTRIBUTION TO  
PMO GOVERNANCE TRANSPARENCY!**





# CUSTOMIZABLE DASHBOARDS

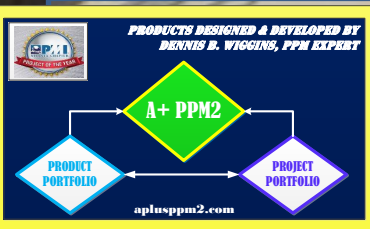
## RED EXCEPTION REPORT

### RED - EXCEPTION REPORT

Number of Hits : 35

Name	Owners	Updaters	Performance Measure Frequency	Scorecard Object Type	December 2018				
					Score	Value	Variance To Goal	% Variance To Goal	% Toward Goal
<a href="#">TCPI % (EAC)</a>	A+ COMM <a href="#">I.greene</a>	<a href="#">I.greene</a>	Weekly	Performance Measure	0	167.11%	-67.11%	-67.11%	59.84%
<a href="#">EV\$</a>	A+ COMM <a href="#">I.greene</a>	<a href="#">I.greene</a>	Weekly	Performance Measure	1	\$743,280 (USD)	-\$71,720 (USD)	-9%	91%
<a href="#">CV\$</a>	A+ COMM <a href="#">I.greene</a>	<a href="#">I.greene</a>	Weekly	Performance Measure	2	-\$58,920 (USD)	-\$58,920 (USD)	N/A	N/A
<a href="#">SV\$</a>	A+ COMM <a href="#">I.greene</a>	<a href="#">I.greene</a>	Weekly	Performance Measure	1	-\$71,720 (USD)	-\$71,720 (USD)	N/A	N/A
<a href="#">TCPI % (BAC)</a>	A+ COMM <a href="#">I.greene</a>	<a href="#">I.greene</a>	Weekly	Performance Measure	0	167.11%	-67.11%	-67.11%	59.84%
<a href="#">GEN ACCTG - HARDWARE \$'s</a>	A+ COMM		Weekly	Performance Measure	0	\$39,000 (USD)	-\$4,000 (USD)	-11%	90%

**AUTOMATED & INTEGRATED DRILL  
DOWN (BLUE FONT) FUNCTIONALITY**



# CUSTOMIZABLE DASHBOARDS

## YELLOW EXCEPTION REPORT

### YELLOW - EXCEPTION REPORT

Number of Hits : 15

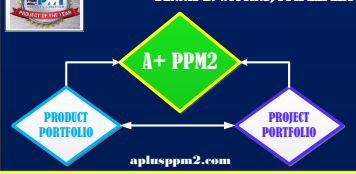
Name	Owners	Updaters	Performance Measure Frequency	Scorecard Object Type	Aggregation Type	December 2018				
						Score	Value	Variance To Goal	% Variance To Goal	% Toward Goal
<b>CPI%</b>	A+ COMM <a href="#">I.greene</a>	<a href="#">I.greene</a>	Weekly	Performance Measure	Use Equation	4.27	92.66%	-7.34%	-7.34%	92.66%
<b>SPI%</b>	A+ COMM <a href="#">I.greene</a>	<a href="#">I.greene</a>	Weekly	Performance Measure	Use Equation	4.12	91.2%	-8.8%	-8.8%	91.2%
<b>CSPI%</b>	A+ COMM <a href="#">I.greene</a>	<a href="#">I.greene</a>	Weekly	Performance Measure	Use Equation	3.45	84.5%	-15.5%	-15.5%	84.5%
<b>GEN ACCTG - LABOR \$'s</b>	A+ COMM		Weekly	Performance Measure	Use Equation	4	\$649,000 (USD)	-\$11,500 (USD)	-2%	98%
<b>EXECUTION T-COSTS (\$)</b>	A+ COMM <a href="#">I.greene</a>	<a href="#">I.greene</a>	Weekly	Performance Measure	Use Equation	4	\$430,900 (USD)	-\$5,900 (USD)	-1%	99%
<b>PROJECT LIFE CYCLE (PLC) LBR COSTS (\$)</b>	A+ COMM		Weekly	Performance Measure	Use Equation	3	\$666,600 (USD)	-\$29,100 (USD)	-5%	96%
<b>INITIATION A-OTHER COSTS (\$)</b>	A+ COMM		Weekly	Performance Measure	Use Equation	4	\$15,240 (USD)	-\$240 (USD)	-2%	98%
<b>INITIATION R-HOURS</b>	A+ COMM <a href="#">I.greene</a>	<a href="#">I.greene</a>	Weekly	Performance Measure	Use Equation	3.03	421.4	-16.01	-3.95%	96.2%
<b>PLANNING R-HOURS</b>	A+ COMM <a href="#">I.greene</a>	<a href="#">I.greene</a>	Weekly	Performance Measure	Use Equation	2.93	1,055.37	-41.88	-4.13%	96.03%
<b>EXECUTION: CONTRACTOR W-AVG-FTE's</b>			Weekly	Performance Measure	Use Equation	4.49	3.96	-0.04	-1.03%	98.98%

**AUTOMATED & INTEGRATED DRILL DOWN (BLUE FONT) FUNCTIONALITY**





PRODUCTS DESIGNED & DEVELOPED BY  
DENNIS D. WIGGINS, PPM EXPERT



# CUSTOMIZABLE DASHBOARDS GREEN (ON TARGET) REPORT

## GREEN - ON TARGET REPORT

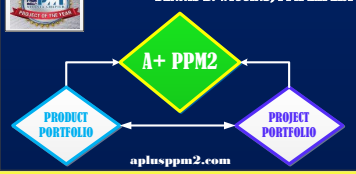
Number of Hits : 39

Name	Owners	Updaters	Performance Measure Frequency	Scorecard Object Type	Aggregation Type	December 2018				
						Score	Value	Variance To Goal	% Variance To Goal	% Toward Goal
<b>PERCENT (%) COMPLETE</b>	A+ COMM		Weekly	Performance Measure	Last Value	5.97	91.2%	1.73%	1.93%	101.93%
<b>BAC \$</b>	A+ COMM <a href="#">I.greene</a>	<a href="#">I.greene</a>	Weekly	Performance Measure	Use Equation	5	\$890,000 (USD)	\$0 (USD)	0%	100%
<b>AC \$</b>	A+ COMM <a href="#">I.greene</a>	<a href="#">I.greene</a>	Weekly	Performance Measure	Use Equation	6	\$802,200 (USD)	\$12,800 (USD)	2%	102%
<b>EAC \$</b>	A+ COMM <a href="#">I.greene</a>	A+ COMM <a href="#">I.greene</a>	Weekly	Performance Measure	Last Value	5	\$890,000 (USD)	\$0 (USD)	0%	100%
<b>VAC \$</b>	A+ COMM <a href="#">I.greene</a>	<a href="#">I.greene</a>	Weekly	Performance Measure	Use Equation	5	\$0 (USD)	\$0 (USD)	N/A	N/A
<b>PV%</b>	A+ COMM <a href="#">I.greene</a>	<a href="#">I.greene</a>	Weekly	Performance Measure	Use Equation	5	89.47%	0%	0%	100%
<b>AC%</b>	A+ COMM <a href="#">I.greene</a>	A+ COMM <a href="#">I.greene</a>	Weekly	Performance Measure	Use Equation	5.97	91.2%	1.73%	1.93%	101.93%
	A+			Performance						

**AUTOMATED & INTEGRATED DRILL  
DOWN (BLUE FONT) FUNCTIONALITY**



PRODUCTS DESIGNED & DEVELOPED BY  
DENNIS D. WIGGINS, PPM EXPERT



# CUSTOMIZABLE DASHBOARDS BLUE (SURPLUS) REPORT

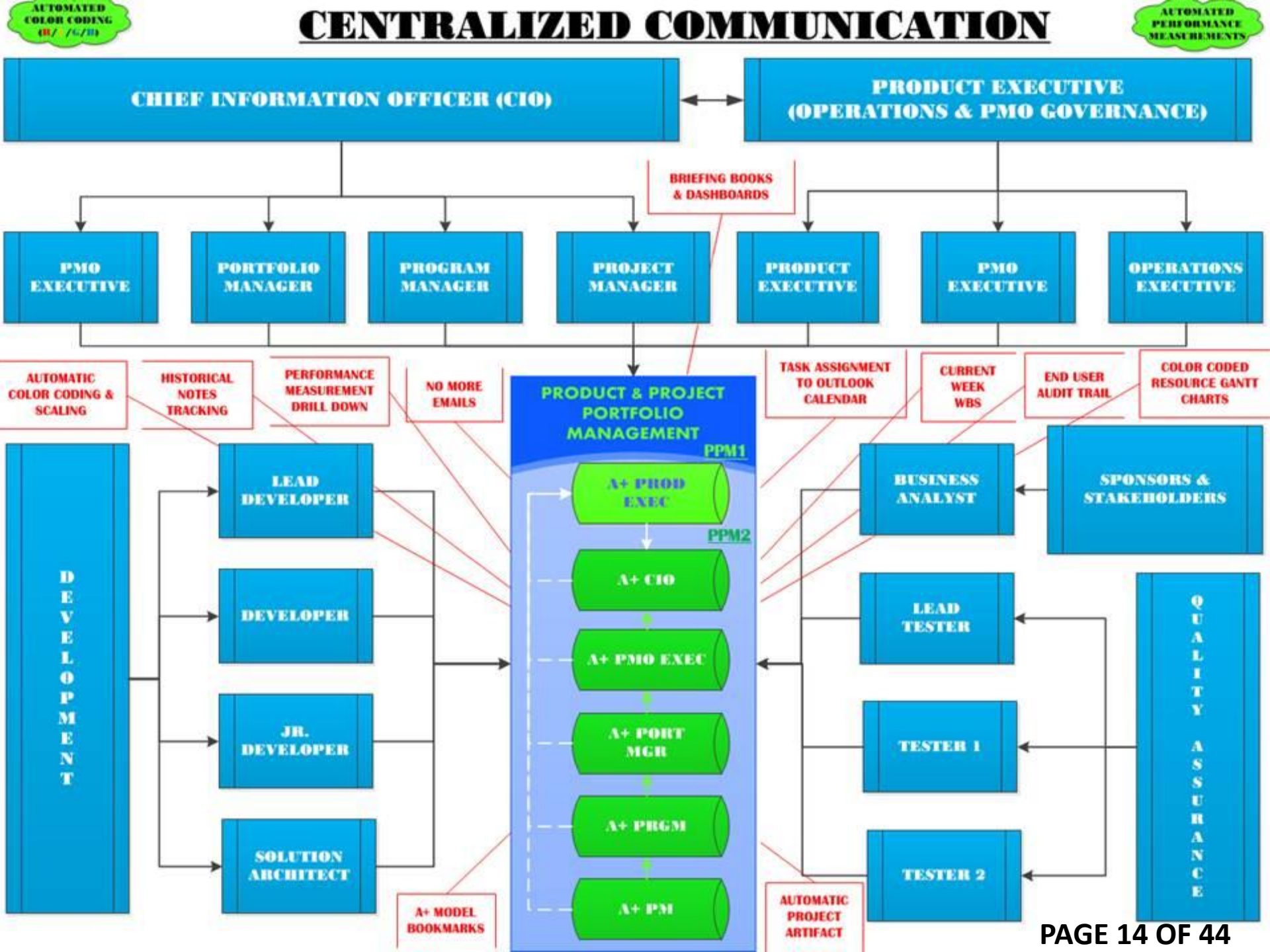
## BLUE - SURPLUS REPORT

Number of Hits : 15

Name	Owners	Updaters	Performance Measure Frequency	Scorecard Object Type	December 2018				
					Score	Value	Variance To Goal	% Variance To Goal	% Toward Goal
<a href="#">GEN ACCTG - SOFTWARE \$'s</a>	A+ COMM		Weekly	Performance Measure	10	\$37,900 (USD)	\$4,600 (USD)	11%	112%
<a href="#">GEN ACCTG - LICENSING \$'s</a>	A+ COMM		Weekly	Performance Measure	10	\$29,250 (USD)	\$3,250 (USD)	10%	111%
<a href="#">GEN ACCTG - OTHER \$'s:</a>	A+ COMM		Weekly	Performance Measure	10	\$20,350 (USD)	\$22,150 (USD)	52%	209%
<a href="#">TOTAL GEN ACCTG &lt; LABOR \$'s</a>	A+ COMM		Weekly	Performance Measure	10	\$153,200 (USD)	\$24,300 (USD)	14%	116%
<a href="#">EXECUTION A-OTHER COSTS (\$)</a>	A+ COMM		Weekly	Performance Measure	10	\$70,000 (USD)	\$17,500 (USD)	20%	125%
<a href="#">MONITOR &amp; CONTROL R-HOURS</a>	A+ COMM <a href="#">I.greene</a>	<a href="#">I.greene</a>	Weekly	Performance Measure	10	3,067.26	378.61	10.99%	112.34%
<a href="#">INITIATION: CONTRACTOR W-AVG-FTE's</a>			Weekly	Performance Measure	8.57	0.56	0.04	7.15%	107.7%
<a href="#">MON &amp; CNTRL: CONTRACTOR W-AVG-FTE's</a>			Weekly	Performance Measure	9.13	4.7	0.42	8.26%	109%
<a href="#">INITIATION: EMPLOYEE W-AVG-FTE's</a>			Weekly	Performance Measure	8.57	0.3	0.02	7.15%	107.7%
<a href="#">MON &amp; CNTRL: EMPLOYEE W-AVG-FTE's</a>			Weekly	Performance Measure	9.13	2.53	0.23	8.26%	109%
<a href="#">INITIATION: TOTAL W-AVG-FTE's</a>	A+ COMM <a href="#">I.greene</a>	<a href="#">I.greene</a>	Weekly	Performance Measure	8.57	0.86	0.07	7.15%	107.7%
<a href="#">MON &amp; CNTRL: TOTAL W-AVG-FTE's</a>	A+ COMM <a href="#">I.greene</a>	<a href="#">I.greene</a>	Weekly	Performance Measure	9.13	7.24	0.65	8.26%	109%
<a href="#">CONTRACTOR AVG %</a>	A+		Weekly	Performance	7.70	0.50%	0.00%	5.56%	105.88%

**AUTOMATED & INTEGRATED DRILL  
DOWN (BLUE FONT) FUNCTIONALITY**

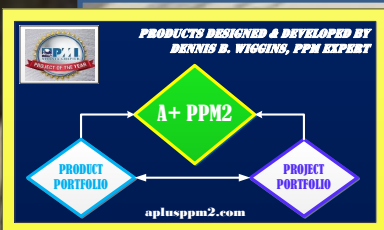




# **ANALYTIS PLUS PORTFOLIO MANAGER**

## **(A+ PORT MGR) MODEL**





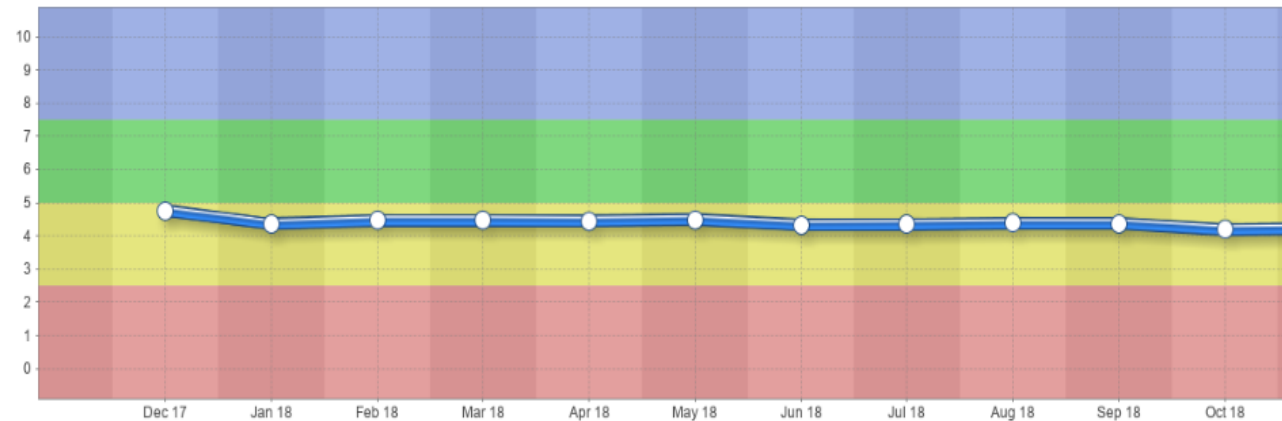
# ANALYTICS PLUS PORTFOLIO MGR CONSOLIDATED KPI METRICS

A+ PORT MGR 1 V6.0 COMMAND CENTER (CC) ORGANIZATION

## PORTFOLIO (PIF) ANALYTICS

- ▲ PORTFOLIO'S IN FLIGHT ANALYTICS
- ▲ DEMAND MANAGEMENT ANALYTICS (CY = DEC)
- ▲ BASELINE / RE-BASELINE ANALYTICS
- ▲ FORECAST ANALYTICS
- ▲ BASE EARNED VALUE MANAGEMENT (EVM)
  - ★ PROJECT IN FLIGHT DAYS
  - ★ ACTUAL COSTS (AC) \$'s
  - ★ ESTIMATE AT COMPLETION (EAC) \$'s
    - P1: PROJECT NAME - EAC \$'s
    - P2: PROJECT NAME - EAC \$'s
    - P3: PROJECT NAME - EAC \$'s
    - P4: PROJECT NAME - EAC \$'s
    - P5: PROJECT NAME - EAC \$'s
    - P6: PROJECT NAME - EAC \$'s
    - P7: PROJECT NAME - EAC \$'s
    - P8: PROJECT NAME - EAC \$'s
    - P9: PROJECT NAME - EAC \$'s
    - P10: PROJECT NAME - EAC \$'s
    - P11: PROJECT NAME - EAC \$'s
    - P12: PROJECT NAME - EAC \$'s
  - PORTFOLIO NAME: TOTAL EAC \$'s
  - PORTFOLIO NAME: AVG EAC \$'s
- ★ VARIANCE AT COMPLETION (VAC) \$'s
- ★ ESTIMATE TO COMPLETE (ETC) \$'s
- ★ TO COMPLETE PERFORMANCE INDEX % (BAC)
- ★ TO COMPLETE PERFORMANCE INDEX % (EAC)

## Historical Performance



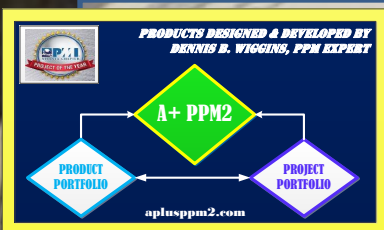
Showing December 2017 To December 2018

Series Color	Scorecard Object	Series	December 2017	January 2018	February 2018	March 2018	April 2018	May 2018	June 2018	July 2018	August 2018	September 2018	October 2018	November 2018	December 2018
	PORTFOLIO (PIF) ANALYTICS	Score	4.76	4.36	4.47	4.47	4.45	4.49	4.33	4.35	4.38	4.38	4.19	4.23	4.33

Edit Chart

Reset Chart

**CONSOLIDATING KPI METRICS PROVIDES  
OPPORTUNITY FOR CONTINUOUS IMPROVEMENT  
BASED ON SCORE & COLOR CODE**



# ANALYTICS PLUS PORTFOLIO MGR RED PERFORMANCE MEASUREMENT RPT

A+ PORT MGR 1 V6.0 COMMAND CENTER (CC) ORGANIZATION

( expand all | collapse all )

PORTFOLIO (PIF) ANALYTICS

▲ PORTFOLIO'S IN FLIGHT ANALYTICS

▲ DEMAND MANAGEMENT ANALYTICS (CY = DEC)

▲ BASELINE / RE-BASELINE ANALYTICS

▲ FORECAST ANALYTICS

▲ BASE EARNED VALUE MANAGEMENT (EVM)

★ PROJECT IN FLIGHT DAYS

★ ACTUAL COSTS (AC) \$'s

★ ESTIMATE AT COMPLETION (EAC) \$'s

★ VARIANCE AT COMPLETION (VAC) \$'s

★ ESTIMATE TO COMPLETE (ETC) \$'s

★ TO COMPLETE PERFORMANCE INDEX % (BAC)

★ TO COMPLETE PERFORMANCE INDEX % (EAC)

▲ EARNED VALUE MANAGEMENT (EVM) ANALYTICS

▲ VARIABLE EARNED VALUE MANAGEMENT (EVM)

★ PLANNED VALUE % COMPLETE

★ ACTUAL % COMPLETE

★ BURN RATE %

★ PLANNED VALUE \$'s

★ EARNED VALUE \$'s

★ COST VARIANCE (CV) \$'s

★ SCHEDULE VARIANCE (SV) \$'s

★ COST PERFORMANCE INDEX (CPI) %

★ SCHEDULE PERFORMANCE INDEX (SPI) %

★ COST SCHEDULE PERFORMANCE INDEX (CSPI) %

## Red Performance Measure Report

Edit Report Edit Balanced Scorecard Objects

Sort by Organization/Balanced Scorecard hierarchy ordering

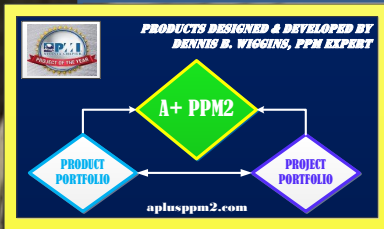
Number of Hits : 8

Id	Name	Organization	Owners	Performance Measure Frequency	June 2018	July 2018	August 2018	September 2018	October 2018	November 2018	December 2018
					Value	Value	Value	Value	Value	Value	Value
187050	P1: PROJECT NAME : PIF DAYS	A+ PORT MGR 1 V6.0 COMMAND CENTER (CC) ORGANIZATION	A+ COMM	Weekly	220	240	260	285	325	350	375
187060	PORTFOLIO NAME: TOTAL PIF DAYS	A+ PORT MGR 1 V6.0 COMMAND CENTER (CC) ORGANIZATION	A+ COMM	Weekly	220	240	260	285	325	350	375
187061	PORTFOLIO NAME: AVG PIF DAYS	A+ PORT MGR 1 V6.0 COMMAND CENTER (CC) ORGANIZATION	A+ COMM	Weekly	73.33	80	86.67	95	108.33	116.67	125
177791	P1: PROJECT NAME : ETC \$'s	A+ PORT MGR 1 V6.0 COMMAND CENTER (CC) ORGANIZATION	A+ COMM	Weekly	\$512,425 (USD)	\$455,425 (USD)	\$355,150 (USD)	\$322,150 (USD)	\$250,650 (USD)	\$182,410 (USD)	\$87,800 (USD)
177801	PORTFOLIO NAME: TOTAL ETC \$'s	A+ PORT MGR 1 V6.0 COMMAND CENTER (CC) ORGANIZATION	A+ COMM	Weekly	\$512,425 (USD)	\$455,425 (USD)	\$355,150 (USD)	\$322,150 (USD)	\$250,650 (USD)	\$182,410 (USD)	\$87,800 (USD)
186775	PORTFOLIO NAME: AVG ETC \$'s	A+ PORT MGR 1 V6.0 COMMAND CENTER (CC) ORGANIZATION	A+ COMM	Weekly	\$170,808 (USD)	\$151,808 (USD)	\$118,383 (USD)	\$107,383 (USD)	\$83,550 (USD)	\$60,803 (USD)	\$29,267 (USD)
177803	P1: PROJECT NAME : TCPI % (BAC)	A+ PORT MGR 1 V6.0 COMMAND CENTER (CC) ORGANIZATION	A+ COMM	Weekly	147.39%	152.68%	178.16%	168.58%	179.21%	173.59%	167.11%
177815	P1: PROJECT NAME : TCPI % (EAC)	A+ PORT MGR 1 V6.0 COMMAND CENTER (CC) ORGANIZATION	A+ COMM	Weekly	147.39%	152.68%	178.16%	168.58%	179.21%	173.59%	167.11%

REPORT GENERATED BY THE  
RED EXCLAMATION POINT IN CIRCLE


PAGE 17 OF 44






# CROSS FUNCTIONAL DISCIPLINE -


# GENERAL ACCOUNTING




PRODUCTS DESIGNED & DEVELOPED BY  
DENNIS B. WIGGINS, PPM EXPERT



A+ PPM2



PRODUCT PORTFOLIO



PROJECT PORTFOLIO

aplusppm2.com

# ANALYTICS PLUS PROJECT MGR (A+ PM)

## GENERAL ACCOUNTING (CATEGORIES)

PORT 1 - A+ PM 1 V6.0 ORGANIZATION - PROJECT NAME

expand all | collapse all

FINAL: A+ PM PROJECT STATUS ANALYTICS - P#1000

PROJECT METRIC ANALYTICS

STEERING COMMITTEE ANALYTICS

GENERAL ACCOUNTING ANALYTICS

GENERAL ACCOUNTING (GEN ACCTG)

GEN ACCTG - CATEGORIC COSTS

GEN ACCTG - LABOR \$'s

GEN ACCTG - HARDWARE \$'s

GEN ACCTG - SOFTWARE \$'s

GEN ACCTG - LICENSING \$'s

GEN ACCTG - EQUIPMENT \$'s

GEN ACCTG - OTHER \$'s

TOTAL GEN ACCTG \$'s

TOTAL GEN ACCTG < LABOR \$'s

PROJECT LIFE CYCLE ANALYTICS

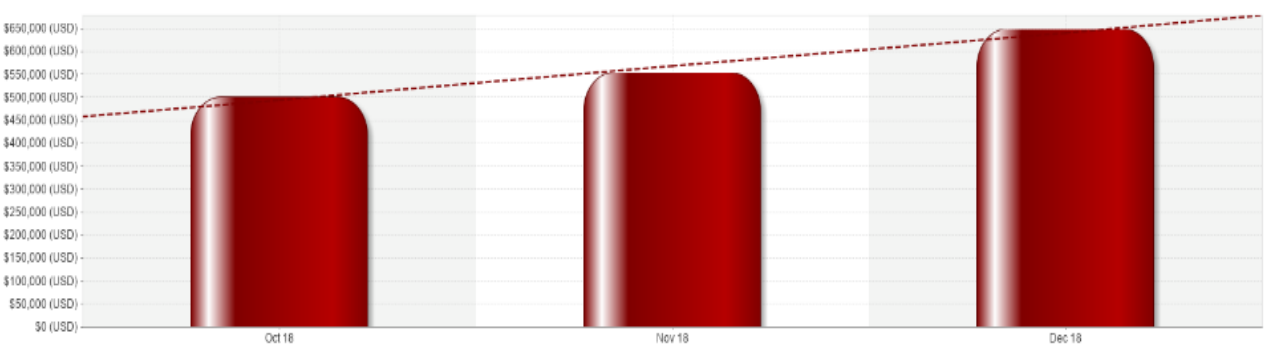
CAPACITY PLANNING ANALYTICS

RISK (SIWOT) ANALYTICS

QUALITY ASSURANCE ANALYTICS

INTERNATIONAL VALUATION ANALYTICS

Historical Performance



Showing

October 2018

To

December 2018

Series Color	Scorecard Object	Series	October 2018	November 2018	December 2018
	LABOR A-COSTS (PFCW)	Actual Value	\$501,500 (USD)	\$394,395 (USD)	\$649,000 (USD)

Edit Chart

Reset Chart

Data Used In Calculations

ANALYTICS PLUS PPM2, LLC >> A+ CIO BASE MODEL >> PPM2: A+ CIO V6.0 - PSEUDO INFORMATION TECHNOLOGY PROFIT CENTER (PPC) >> PPM2: A+ CIO V6.0 ORGANIZATION >> A+ PMO EXEC V6.0 ORGANIZATION >> A+ PORT MGR 1 V6.0 COMMAND CENTER (CC) ORGANIZATION >> A+ PLUS PM (A+ PM) PROJECTS IN PORTFOLIO >> PORT 1 - A+ PM 1 V6.0 ORGANIZATION - PROJECT NAME

ID	Name	Type	Weight	Score
131628	GEN ACCTG - EQUIPMENT \$'s	Performance Measure	12.5%	1.5
131625	GEN ACCTG - HARDWARE \$'s	Performance Measure	12.5%	0
131624	GEN ACCTG - LABOR \$'s	Performance Measure	12.5%	4.1
131627	GEN ACCTG - LICENSING \$'s	Performance Measure	12.5%	10
131629	GEN ACCTG - OTHER \$'s	Performance Measure	12.5%	10
131626	GEN ACCTG - SOFTWARE \$'s	Performance Measure	12.5%	10
131630	TOTAL GEN ACCTG \$'s	Performance Measure	12.5%	5.79
187203	TOTAL GEN ACCTG < LABOR \$'s	Performance Measure	12.5%	10

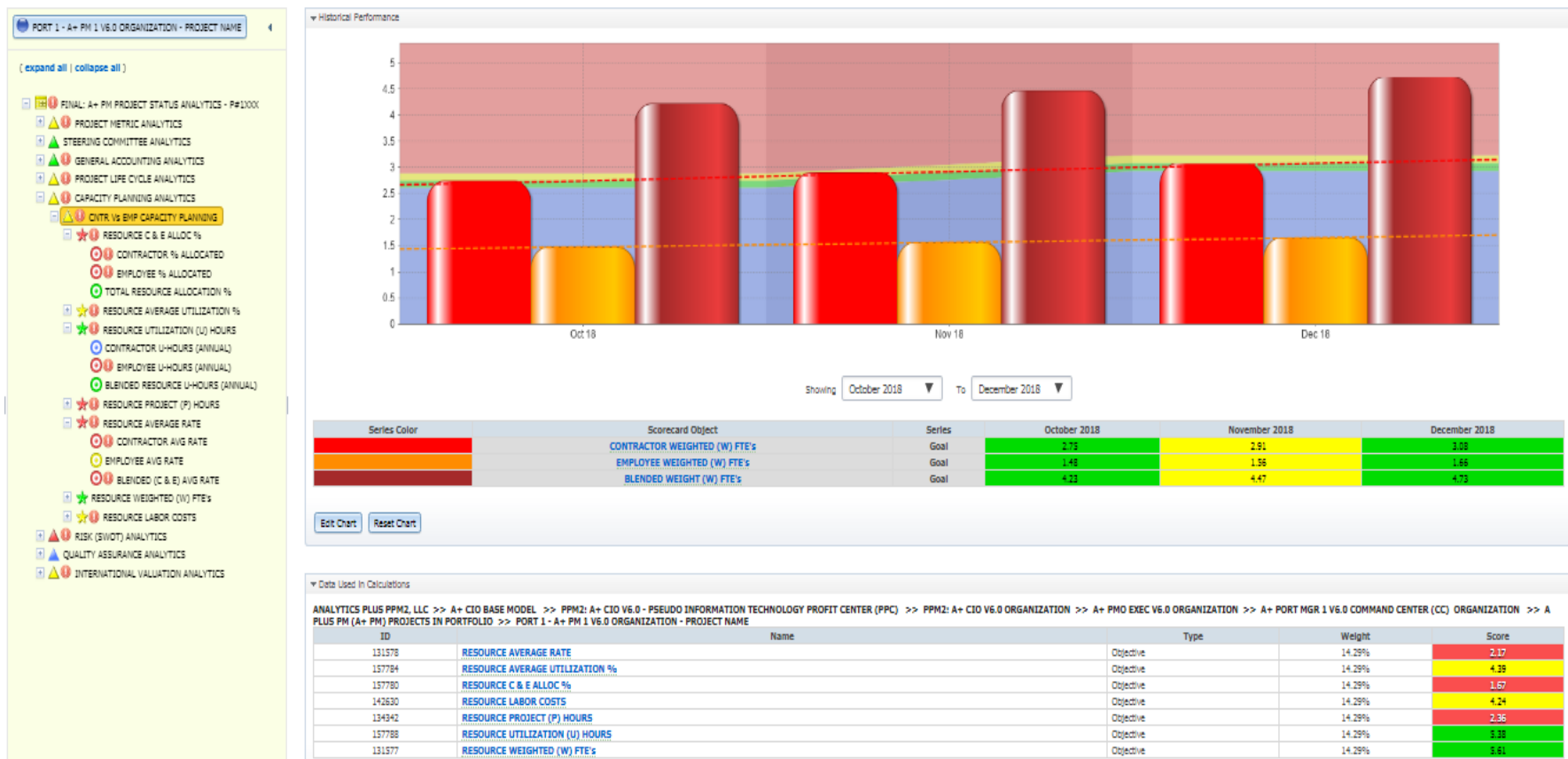
PROJECT PLAN DATA SWIVEL INTO  
GENERAL ACCOUNTING



# CROSS FUNCTIONAL DISCIPLINE -

# RESOURCE MANAGEMENT (I.E. CAPACITY)

# ANALYTICS PLUS PROJECT MGR (A+ PM) CAPACITY PLANNING - RESOURCES



# PROJECT PLAN DATA SWIVEL INTO CAPACITY PLANNING





PRODUCTS DESIGNED & DEVELOPED BY  
DENNIS B. WIGGINS, PPM EXPERT

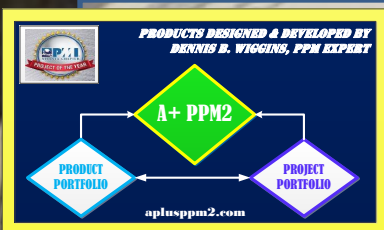
A+ PPM2

PRODUCT  
PORTFOLIO

PROJECT  
PORTFOLIO

aplusppm2.com

# NAVIGATION



# ANALYTICS PLUS PROJECT MGR (A+ PM) NAVIGATION VIEW

PORT 1 - A+ PM 1 V6.0 ORGANIZATION - PROJECT NAME

( expand all | collapse all )

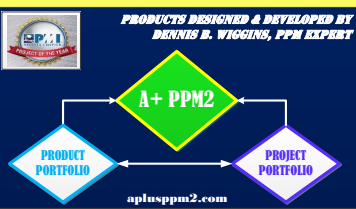
- FINAL: A+ PM PROJECT STATUS ANALYTICS - P#1XXX
  - PROJECT METRIC ANALYTICS
  - STEERING COMMITTEE ANALYTICS
  - GENERAL ACCOUNTING ANALYTICS
  - PROJECT LIFE CYCLE ANALYTICS
  - CAPACITY PLANNING ANALYTICS
  - RISK (SWOT) ANALYTICS
  - QUALITY ASSURANCE ANALYTICS
  - INTERNATIONAL VALUATION ANALYTICS



**AUTOMATED & INTEGRATED DRILL  
DOWN (BLUE FONT) FUNCTIONALITY**



# EXECUTIVE VIEW



# ANALYTICS PLUS PROJECT MGR (A+ PM) EXECUTIVE VIEW

PORT 1 - A+ PM 1 V6.0 ORGANIZATION - PROJECT NAME

( expand all | collapse all )


- [-] FINAL: A+ PM PROJECT STATUS ANALYTICS - P#1XXX
  - [+] [!] PROJECT METRIC ANALYTICS
  - [+] [!] STEERING COMMITTEE ANALYTICS
  - [+] [!] GENERAL ACCOUNTING ANALYTICS
  - [+] [!] PROJECT LIFE CYCLE ANALYTICS
  - [+] [!] CAPACITY PLANNING ANALYTICS
  - [+] [!] RISK (SWOT) ANALYTICS
  - [+] [!] QUALITY ASSURANCE ANALYTICS
  - [+] [!] INTERNATIONAL VALUATION ANALYTICS

Name	Type	Details
FINAL: A+ PM PROJECT STATUS ANALYTICS - P#1XXX		
[-] FINAL: A+ PM PROJECT STATUS ANALYTICS - P#1XXX	Balanced Scorecard Root	⬆️ ⬆️ ⬆️
[+] PROJECT METRIC ANALYTICS	Perspective	⬆️ ⬆️ ⬆️
[+] STEERING COMMITTEE ANALYTICS	Perspective	⬆️ ⬆️ ⬆️
[+] GENERAL ACCOUNTING ANALYTICS	Perspective	⬆️ ⬆️ ⬆️
[-] PROJECT LIFE CYCLE ANALYTICS	Perspective	⬆️ ⬆️ ⬆️
[-] PMBOK LIFE CYCLE ANALYTICS	Perspective	⬆️ ⬆️ ⬆️
[+] BIZ DAYS	Objective	⬆️ ⬆️ ⬆️
[+] TOTAL (T) COSTS	Objective	⬆️ ⬆️ ⬆️
[-] LABOR (LBR) COST	Objective	⬆️ ⬆️ ⬆️
INITIATION LBR COSTS (\$)	Performance Measure	⬆️ ⬆️ ⬆️
PLANNING LBR COSTS (\$)	Performance Measure	⬆️ ⬆️ ⬆️
EXECUTION LBR COSTS (\$)	Performance Measure	⬆️ ⬆️ ⬆️
MONITOR & CONTROL LBR COSTS (\$)	Performance Measure	⬆️ ⬆️ ⬆️
CLOSING LBR COSTS (\$)	Performance Measure	⬆️ ⬆️ ⬆️
PROJECT LIFE CYCLE (PLC) LBR COSTS (\$)	Performance Measure	⬆️ ⬆️ ⬆️
[+] ALL (A) OTHER COSTS	Objective	⬆️ ⬆️ ⬆️
[+] RESOURCE (R) HOURS	Objective	⬆️ ⬆️ ⬆️
[+] CONTRACTOR WAGE RATE (COST)	Objective	⬆️ ⬆️ ⬆️

**AUTOMATED & INTEGRATED DRILL DOWN  
INCLUDING PRIOR PERIOD PERFORMANC**



# PERFORMANCE MEASUREMENT REPORT



PRODUCTS DESIGNED & DEVELOPED BY  
DENNIS B. WIGGINS, PPM EXPERT

A+ PPM2

PRODUCT PORTFOLIO

PROJECT PORTFOLIO

aplusppm2.com

# ANALYTICS PLUS PROJECT MGR (A+ PM) PERFORMANCE MEASUREMENT REPORT

PORT 1 - A+ PM 1 V6.0 ORGANIZATION - PROJECT NAME

( expand all | collapse all )

FINAL: A+ PM PROJECT STATUS ANALYTICS - P#1XXX

PROJECT METRIC ANALYTICS

STEERING COMMITTEE ANALYTICS

GENERAL ACCOUNTING ANALYTICS

PROJECT LIFE CYCLE ANALYTICS

CAPACITY PLANNING ANALYTICS

RISK (SWOT) ANALYTICS

QUALITY ASSURANCE ANALYTICS

INTERNATIONAL VALUATION ANALYTICS

Performance Measure Report - FINAL: A+ PM PROJECT STATUS ANALYTICS - P#1XXX

Edit Report

Export Scorecard Structure

Export Values

ID

Performance Measure

Series

July 2018

August 2018

September 2018

October 2018

November 2018

December 2018

279824

PERCENT (%) COMPLETE

Actual Value

43.5%

51.2%

61.4%

66.75%

79%

91.2%

128192

BAC \$

Actual Value

\$890,000 (USD)

\$890,000 (USD)

\$890,000 (USD)

\$890,000 (USD)

\$890,000 (USD)

\$890,000 (USD)

128193

AC \$

Actual Value

\$434,575 (USD)

\$534,850 (USD)

\$567,850 (USD)

\$639,350 (USD)

\$707,590 (USD)

\$802,200 (USD)

128194

EAC \$

Actual Value

\$890,000 (USD)

\$890,000 (USD)

\$890,000 (USD)

\$890,000 (USD)

\$890,000 (USD)

\$890,000 (USD)

128198

VAC \$

Actual Value

\$0 (USD)

\$0 (USD)

\$0 (USD)

\$0 (USD)

\$0 (USD)

\$0 (USD)

128195

ETC \$

Actual Value

\$455,425 (USD)

\$355,150 (USD)

\$322,150 (USD)

\$250,650 (USD)

\$182,410 (USD)

\$87,800 (USD)

128197

TCPI % (EAC)

Actual Value

152.68%

178.16%

168.58%

179.21%

173.59%

167.11%

128200

PV%

Actual Value

43.86%

50.88%

59.65%

68.83%

78%

89.47%

128201

AC%

Actual Value

43.5%

51.2%

61.4%

66.75%

79%

91.2%

128202

BR%

Actual Value

48.83%

60.1%

63.8%

71.84%

79.5%

90.13%

128203

PVS

Actual Value

\$447,500 (USD)

\$502,500 (USD)

\$565,000 (USD)

\$660,385 (USD)

\$725,769 (USD)

\$815,000 (USD)

128204

EVS

Actual Value

\$194,662 (USD)

\$257,280 (USD)

\$346,910 (USD)

\$440,807 (USD)

\$573,358 (USD)

\$743,280 (USD)

128205

CVS

Actual Value

-\$239,912 (USD)

-\$277,570 (USD)

-\$220,940 (USD)

-\$198,543 (USD)

-\$134,232 (USD)

-\$58,920 (USD)

128206

SVS

Actual Value

-\$252,838 (USD)

-\$245,220 (USD)

-\$218,090 (USD)

-\$219,578 (USD)

-\$152,411 (USD)

-\$71,720 (USD)

128207

CPI%

Actual Value

44.79%

48.1%

61.09%

68.95%

81.03%

92.66%

128208

SPI%

Actual Value

43.5%

51.2%

61.4%

66.75%

79%

91.2%

128209

CSPI%

Actual Value

19.49%

24.63%

37.51%

46.02%

64.01%

84.5%

128196

TCPI % (BAC)

Actual Value

152.68%

178.16%

168.58%

179.21%

173.59%

167.11%

157806

BASELINE FUNDING \$'s

Actual Value

\$890,000 (USD)

\$890,000 (USD)

\$890,000 (USD)

\$890,000 (USD)

\$890,000 (USD)

\$890,000 (USD)

157769

CR 1: NET CHANGE REQUEST \$'s (+/-)

Actual Value

157770

CR 2: NET CHANGE REQUEST \$'s (+/-)

Actual Value

157771

CR 3: NET CHANGE REQUEST \$'s (+/-)

Actual Value

157772

CR 4: NET CHANGE REQUEST \$'s (+/-)

Actual Value

157773

CR 5: NET CHANGE REQUEST \$'s (+/-)

Actual Value

157807

CR TOTAL NET CHANGE (+/-) FUNDING \$'s

Actual Value

AUTOMATED & INTEGRATED DRILL  
DOWN (BLUE FONT) FUNCTIONALITY





PRODUCTS DESIGNED & DEVELOPED BY  
DENNIS D. WIGGINS, PPM EXPERT

A+ PPM2

PRODUCT  
PORTFOLIO

PROJECT  
PORTFOLIO

aplusppm2.com

# A+ PM MODEL PROJECT PREDICTIVE ANALYTICS (PPA)



PRODUCTS DESIGNED & DEVELOPED BY  
DENNIS B. WIGGINS, PPM EXPERT

A+ PPM2

PROJECT PORTFOLIO

PROJECT PORTFOLIO

aplusppm2.com

# ANALYTICS PLUS PROJECT MGR (A+ PM)

## PROJECT PREDICTIVE ANALYTICS (PPA)

### PPA - COMPARATIVE FOUR (4) EAC's...

### PM ANALYSIS:

PMBOK PROVIDES SCIENTIFIC COMPUTATIONS TO COMPUTE FOUR (4) EAC FORECASTS; PROJECT MANAGERS SHOULD BE ABLE ANALYZE TO DETERMINE WITH A HIGH DEGREE OF ACCURACY THE ESTIMATE AT COMPLETION (EAC). **THE "A PLUS MODELS" COMPUTES & CHARTS EVM FOR "PPA" AUTOMATICALLY.**



CALENDAR OPTIONS:  
 WEEKLY  
 MONTHLY  
 QUARTERLY  
 YEARLY

Series Color	Score Object	Organization	Series	April 2017	LEGEND
	BASELINE \$ (PPA)	PORT 1 - A+ PM 1 SUBSIDIARY 5 - PMBOK PREDICTIVE ANALYTICS (PPA) - PROJECT NAME	Actual Value	\$1,500,000 (USD)	ON TARGET
	OPTION 1: EAC \$ (PPA)	PORT 1 - A+ PM 1 SUBSIDIARY 5 - PMBOK PREDICTIVE ANALYTICS (PPA) - PROJECT NAME	Actual Value	\$1,248,214 (USD)	SURPLUS
	OPTION 2: EAC \$ (PPA)	PORT 1 - A+ PM 1 SUBSIDIARY 5 - PMBOK PREDICTIVE ANALYTICS (PPA) - PROJECT NAME	Actual Value	\$1,429,500 (USD)	ON TARGET
	OPTION 3: EAC \$ (PPA)	PORT 1 - A+ PM 1 SUBSIDIARY 5 - PMBOK PREDICTIVE ANALYTICS (PPA) - PROJECT NAME	Actual Value	\$1,148,714 (USD)	SURPLUS

FORECASTING WITH A HIGH DEGREE OF ACCURACY



PRODUCTS DESIGNED & DEVELOPED BY  
DENNIS B. WIGGINS, PPM EXPERT

A+ PPM2

PROJECT PORTFOLIO

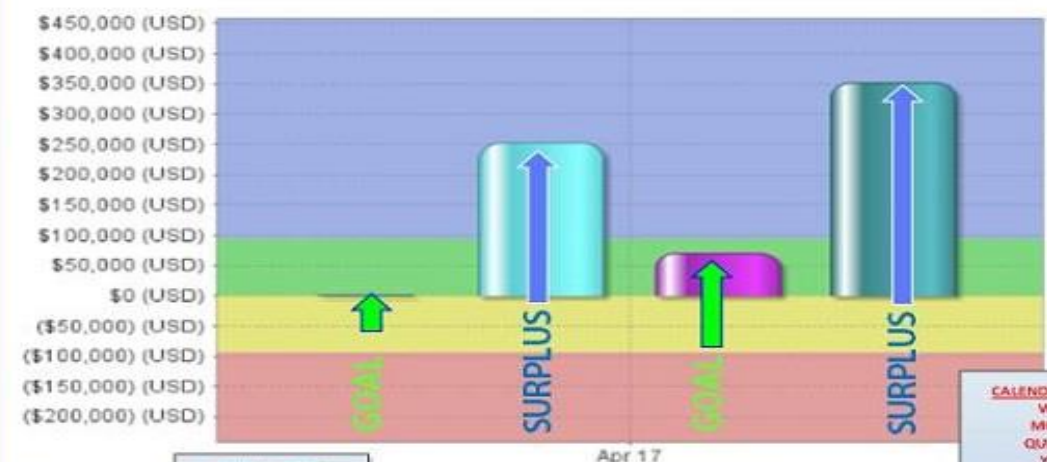
PROJECT PORTFOLIO

aplusppm2.com

# ANALYTICS PLUS PROJECT MGR (A+ PM)

## PROJECT PREDICTIVE ANALYTICS (PPA)

PPA - COMPARATIVE FOUR (4) VAC's...



**PM ANALYSIS:**

BASED ON THE FOUR (4) COMPUTATIONS RECORDED BELOW ARE THEIR RESPECTIVE "VARIANCE AT COMPLETION" TO THE BASELINE.

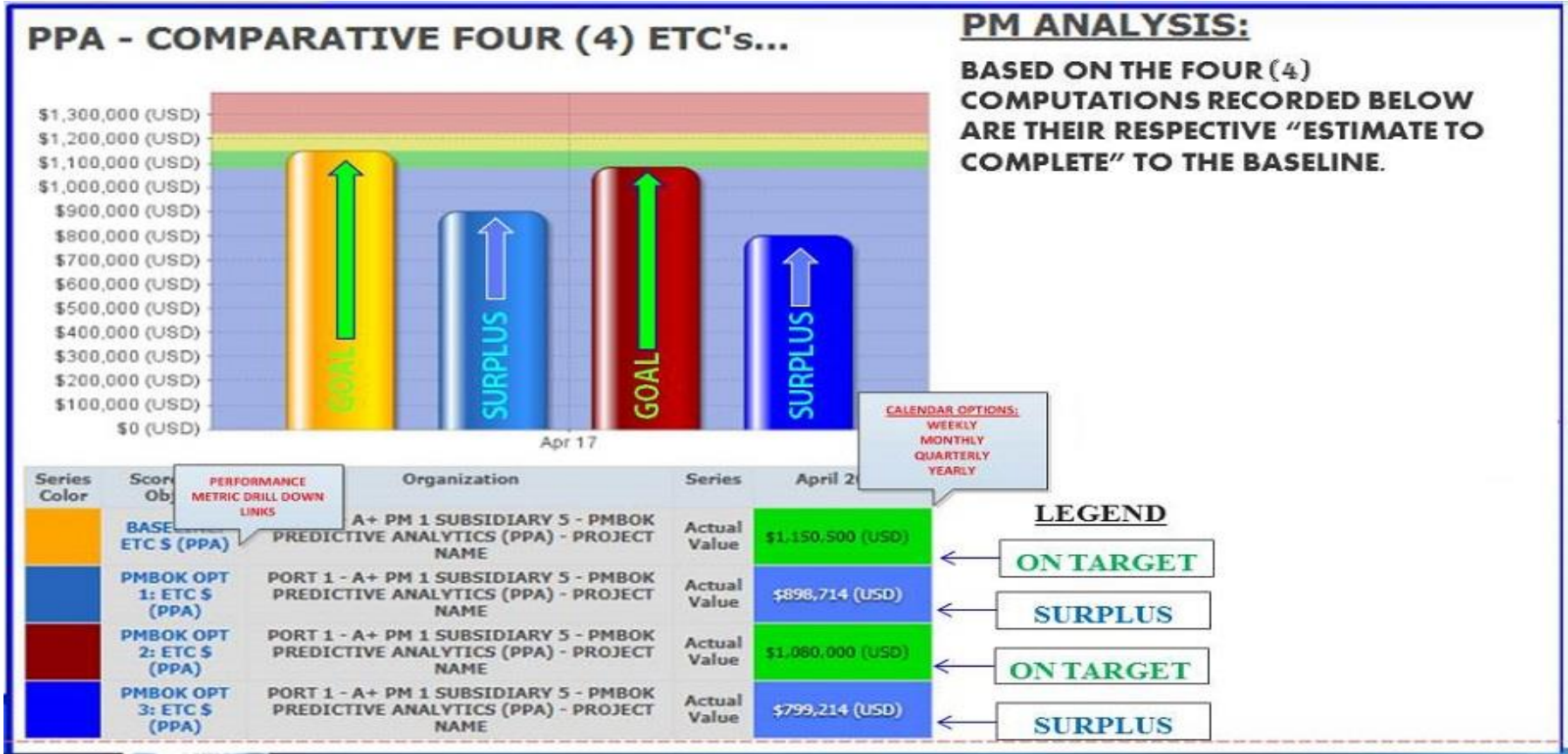
Series Color	Score Ob	Organization	Series	April 2017	LEGEND
Blue	BASLINE: VAC \$ (PPA)	PORT 1 - A+ PM 1 SUBSIDIARY 5 - PMBOK PREDICTIVE ANALYTICS (PPA) - PROJECT NAME	Actual Value	\$0 (USD)	ON TARGET
Light Blue	OPTION 1: VAC \$ (PPA)	PORT 1 - A+ PM 1 SUBSIDIARY 5 - PMBOK PREDICTIVE ANALYTICS (PPA) - PROJECT NAME	Actual Value	\$251,786 (USD)	SURPLUS
Purple	OPTION 2: VAC \$ (PPA)	PORT 1 - A+ PM 1 SUBSIDIARY 5 - PMBOK PREDICTIVE ANALYTICS (PPA) - PROJECT NAME	Actual Value	\$70,500 (USD)	ON TARGET
Dark Blue	OPTION 3: VAC \$ (PPA)	PORT 1 - A+ PM 1 SUBSIDIARY 5 - PMBOK PREDICTIVE ANALYTICS (PPA) - PROJECT NAME	Actual Value	\$351,286 (USD)	SURPLUS

FORECASTING WITH A HIGH DEGREE OF ACCURACY

[aplusppm2.com](http://aplusppm2.com)

# ANALYTICS PLUS PROJECT MGR (A+ PM)

## PROJECT PREDICTIVE ANALYTICS (PPA)



FORECASTING WITH A HIGH DEGREE OF ACCURACY



PRODUCTS DESIGNED & DEVELOPED BY  
DENNIS D. WIGGINS, PPM EXPERT

A+ PPM2

PROJECT PORTFOLIO

PROJECT PORTFOLIO

aplusppm2.com

# ANALYTICS PLUS PROJECT MGR (A+ PM)

## PROJECT PREDICTIVE ANALYTICS (PPA)

PPA - COMPARATIVE FOUR (4) TCPI's...



**PM ANALYSIS:**  
 BASED ON THE FOUR (4) COMPUTATIONS RECORDED BELOW FOR THE "TO COMPLETE PERFORMANCE INDEX" WHICH PROVIDES METRIC SCALING TO DETERMINE THE DEGREE OF DIFFICULTY BASED ON THE FORECASTED EAC & REMAINING (ETC) DOLLARS – LOWER INDEXES ARE BETTER.

**PM FORECAST: OPTION 3**  
 EAC – \$1,429,500  
 UNDER BUDGET: \$70,500

Series Color	Score	Organization	Series	April 2017	
	PERFORMANCE METRIC DRILL DOWN LINKS				
	<b>BASELINE: TCPI % BAC (PPA)</b>	PORT 1 - A+ PM 1 SUBSIDIARY 5 - PMBOK PREDICTIVE ANALYTICS (PPA) - PROJECT NAME	Actual Value	93.87%	GOAL PERFORMANCE
	<b>PMBOK OPT 1: TCPI % EAC (PPA)</b>	PORT 1 - A+ PM 1 SUBSIDIARY 5 - PMBOK PREDICTIVE ANALYTICS (PPA) - PROJECT NAME	Actual Value	120.17%	UNDER PERFORMANCE
	<b>PMBOK OPT 2: TCPI % EAC (PPA)</b>	PORT 1 - A+ PM 1 SUBSIDIARY 5 - PMBOK PREDICTIVE ANALYTICS (PPA) - PROJECT NAME	Actual Value	100%	GOAL PERFORMANCE
	<b>PMBOK OPT 3: TCPI % EAC (PPA)</b>	PORT 1 - A+ PM 1 SUBSIDIARY 5 - PMBOK PREDICTIVE ANALYTICS (PPA) - PROJECT NAME	Actual Value	135.13%	POOR PERFORMANCE

CALENDAR OPTIONS:  
 WEEKLY  
 MONTHLY  
 QUARTERLY  
 YEARLY

LEGEND

FORECASTING WITH A HIGH DEGREE OF ACCURACY



# COLOR CODING & SCORE ANALYTICS



PRODUCTS DESIGNED & DEVELOPED BY  
DERNIS B. WIGGINS, PPM EXPERT

A+ PPM2

PRODUCT PORTFOLIO

PROJECT PORTFOLIO

aplusppm2.com

# FUNCTIONAL LEVEL ANALYSIS OPTIONS

PORT 1 - A+ PM 1 V6.0 ORGANIZATION - PROJECT NAME

( expand all | collapse all )

FINAL: A+ PM PROJECT STATUS ANALYTICS - P#1000

PROJECT METRIC ANALYTICS

PROJECT EVM ANALYTICS

PERCENT (%) COMPLETE

FORECAST BASE EVM ANALYTICS

BASELINE / RE-BASELINE EVM ANALYTICS

STEERING COMMITTEE ANALYTICS

GENERAL ACCOUNTING ANALYTICS

PROJECT LIFE CYCLE ANALYTICS

CAPACITY PLANNING ANALYTICS

RISK (SWOT) ANALYTICS

QUALITY ASSURANCE ANALYTICS

INTERNATIONAL VALUATION ANALYTICS

Underlying Detail Report - FORECAST BASE EVM ANALYTICS

Select Analysis Report

Scores Over Time

Underlying Detail

Performance Measure Scores

Objective Scores

Underlying Scores

Scores Breakdown

Scores Color Ratio

Underlying Speedometers

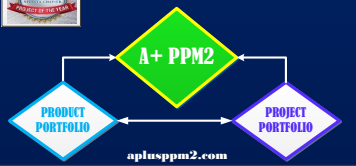
Objective	Owners	Performance Measure	Notes
FORECAST BASE EVM ANALYTICS	l.greene A+ COMM	\$890,000 (USD) BAC \$	
		\$802,200 (USD) AC \$	
		\$890,000 (USD) EAC \$	
		\$0 (USD) VAC \$	
		\$87,800 (USD) ETC \$	
		167.11% TCPI % (EAC)	

AUTOMATED & INTEGRATED DRILL DOWN FUNCTIONALITY

PAGE 34 OF 44



PRODUCTS DESIGNED & DEVELOPED BY  
DENNIS B. WIGGINS, PPM EXPERT



# FUNCTIONAL LEVEL ANALYSIS OPTIONS

PORT 1 - A+ PM 1 V6.0 ORGANIZATION - PROJECT NAME

( expand all | collapse all )

- FINAL: A+ PM PROJECT STATUS ANALYTICS - P#1000
  - PROJECT METRIC ANALYTICS
    - PROJECT EVM ANALYTICS
      - PERCENT (%) COMPLETE
      - FORECAST BASE EVM ANALYTICS
      - BASELINE / RE-BASELINE EVM ANALYTICS**
        - PV%
        - AC%
        - BR%
        - PV\$
        - EV\$
        - CV\$
        - SV\$
        - CPI%
        - SPI%
        - CSPI%
        - TCPI % (BAC)
    - STEERING COMMITTEE ANALYTICS
    - GENERAL ACCOUNTING ANALYTICS
    - PROJECT LIFE CYCLE ANALYTICS
    - CAPACITY PLANNING ANALYTICS
    - RISK (SWOT) ANALYTICS
    - QUALITY ASSURANCE ANALYTICS
    - INTERNATIONAL VALUATION ANALYTICS

Select Analysis Report



Scores Over Time



Underlying Detail



Performance Measure Scores



Objective Scores



Underlying Scores



Scores Breakdown

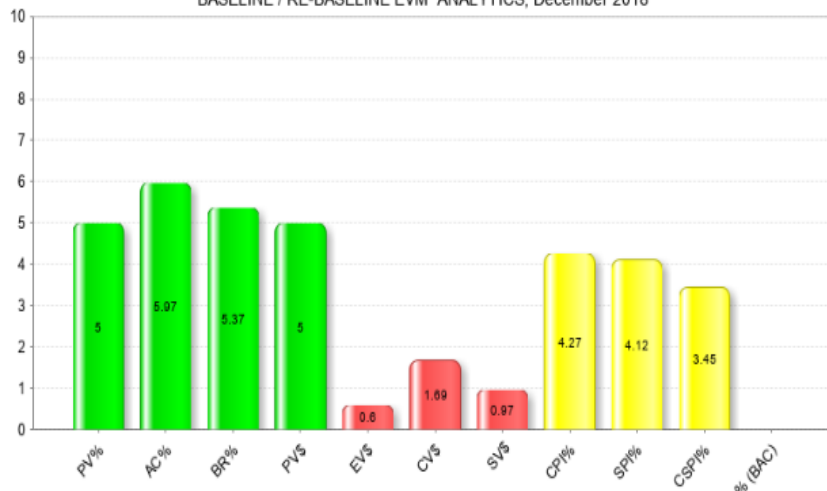


Scores Color Ratio



Underlying Speedometers

BASELINE / RE-BASELINE EVM ANALYTICS, December 2018



## AUTOMATED & INTEGRATED DRILL DOWN FUNCTIONALITY





PRODUCTS DESIGNED & DEVELOPED BY  
DENNIS B. WIGGINS, PPM EXPERT



# FUNCTIONAL LEVEL ANALYSIS OPTIONS

PORT 1 - A+ PM 1 V6.0 ORGANIZATION - PROJECT NAME

( expand all | collapse all )

- FINAL: A+ PM PROJECT STATUS ANALYTICS - P#1XXX
  - PROJECT METRIC ANALYTICS
    - PROJECT EVM ANALYTICS
      - PERCENT (%) COMPLETE
      - FORECAST BASE EVM ANALYTICS
      - BASELINE / RE-BASELINE EVM ANALYTICS**
        - PV%
        - AC%
        - BR%
        - PV\$
        - EV\$
        - CV\$
        - SV\$
        - CPI%
        - SPI%
        - CSPI%
        - TCPI % (BAC)
    - STEERING COMMITTEE ANALYTICS
    - GENERAL ACCOUNTING ANALYTICS
    - PROJECT LIFE CYCLE ANALYTICS
    - CAPACITY PLANNING ANALYTICS
    - RISK (SWOT) ANALYTICS
    - QUALITY ASSURANCE ANALYTICS
    - INTERNATIONAL VALUATION ANALYTICS

## Scores Breakdown - BASELINE / RE-BASELINE EVM ANALYTICS



Select Analysis Report



Scores Over Time



Underlying Detail



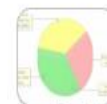
Performance Measure Scores



Objective Scores



Underlying Scores



Scores Breakdown

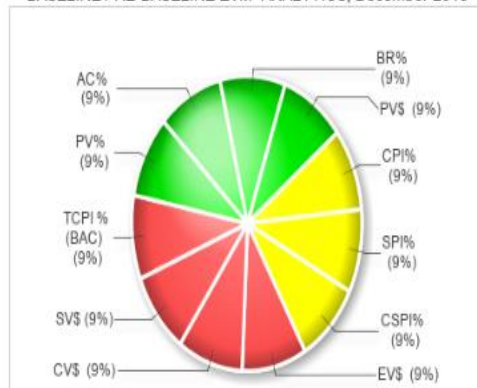


Scores Color Ratio




Underlying Speedometers


## BASELINE / RE-BASELINE EVM ANALYTICS, December 2018



**AUTOMATED & INTEGRATED  
DRILL DOWN FUNCTIONALITY**



PRODUCTS DESIGNED & DEVELOPED BY  
DENNIS B. WIGGINS, PPM EXPERT



PRODUCT PORTFOLIO

PROJECT PORTFOLIO

aplusppm2.com

# FUNCTIONAL LEVEL ANALYSIS OPTIONS

PORT 1 - A+ PM 1 V6.0 ORGANIZATION - PROJECT NAME

( expand all | collapse all )

FINAL: A+ PM PROJECT STATUS ANALYTICS - P#1XXX

PROJECT METRIC ANALYTICS

PROJECT EVM ANALYTICS

PERCENT (%) COMPLETE

FORECAST BASE EVM ANALYTICS

BASELINE / RE-BASELINE EVM ANALYTICS

PV%

AC%

BR%

PV\$

EV\$

CV\$

SV\$

CPI%

SPI%

CSP1%

TCP1 % (BAC)

STEERING COMMITTEE ANALYTICS

GENERAL ACCOUNTING ANALYTICS

PROJECT LIFE CYCLE ANALYTICS

CAPACITY PLANNING ANALYTICS

RISK (SWOT) ANALYTICS

QUALITY ASSURANCE ANALYTICS

INTERNATIONAL VALUATION ANALYTICS

Scores Color Ratio - BASELINE / RE-BASELINE EVM ANALYTICS

Select Analysis Report

Scores Over Time

Underlying Detail

Performance Measure Scores

Objective Scores

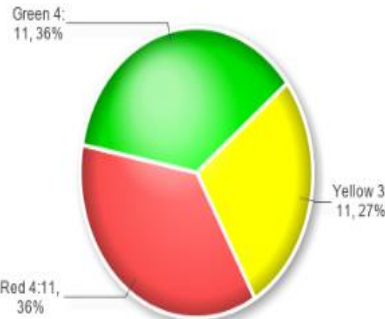
Underlying Scores

Scores Breakdown

Scores Color Ratio

Underlying Speedometers

BASELINE / RE-BASELINE EVM ANALYTICS, December 2018



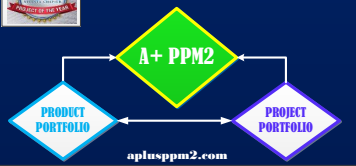
Color	Count	Percentage
Green	4	36%
Yellow	3	27%
Red	4	36%

AUTOMATED & INTEGRATED  
DRILL DOWN FUNCTIONALITY





PRODUCTS DESIGNED & DEVELOPED BY  
DENNIS B. WIGGINS, PPM EXPERT



# FUNCTIONAL LEVEL ANALYSIS OPTIONS

PORT 1 - A+ PM 1 V6.0 ORGANIZATION - PROJECT NAME

( expand all | collapse all )

FINAL: A+ PM PROJECT STATUS ANALYTICS - P#1XXX

PROJECT METRIC ANALYTICS

PROJECT EVM ANALYTICS

PERCENT (%) COMPLETE

FORECAST BASE EVM ANALYTICS

**BASELINE / RE-BASELINE EVM ANALYTICS**

PV%

AC%

BR%

PV\$

EV\$

CV\$

SV\$

CPI%

SPI%

CSPi%

TCPI % (BAC)

STEERING COMMITTEE ANALYTICS

GENERAL ACCOUNTING ANALYTICS

PROJECT LIFE CYCLE ANALYTICS

CAPACITY PLANNING ANALYTICS

RISK (SWOT) ANALYTICS

QUALITY ASSURANCE ANALYTICS

INTERNATIONAL VALUATION ANALYTICS

Underlying Speedometers - BASELINE / RE-BASELINE EVM ANALYTICS

Select Analysis Report

Scores Over Time

Underlying Detail

Performance Measure Scores

Objective Scores

Underlying Scores

Scores Breakdown

Scores Color Ratio

Underlying Speedometers

PV%

AC%

BR%

PV\$

EV\$

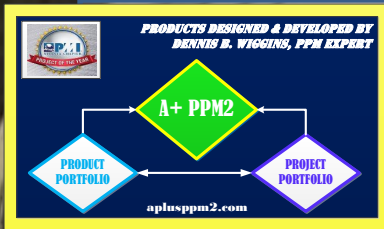
CV\$

SV\$

CPI%


SPI%

**AUTOMATED & INTEGRATED  
DRILL DOWN FUNCTIONALITY**




# A+ MODEL INTEGRATES TASKS/AGENDA/MINUTES & RACI METHODOLOGY







PRODUCTS DESIGNED & DEVELOPED BY  
DENNIS B. WIGGINS, PPM EXPERT



A+ PPM2



PRODUCT PORTFOLIO



PROJECT PORTFOLIO

aplusppm2.com

# ANALYTICS PLUS PROJECT MGR (A+ PM)

## TASKS STATUS

PORT 1 - A+ PM 1 V6.0 ORGANIZATION - PROJECT NAME

( expand all | collapse all )

FINAL: A+ PM PROJECT STATUS ANALYTICS - P#100X

PROJECT METRIC ANALYTICS

PROJECT EVM ANALYTICS

PERCENT (%) COMPLETE

FORECAST BASE EVM ANALYTICS

BASELINE / RE-BASELINE EVM ANALYTICS

PV%

AC%

BR%

PV\$

EV\$

CV\$

SV\$

CPI%

SP1%

CSPI%

TCPI % (BAC)

STEERING COMMITTEE ANALYTICS

GENERAL ACCOUNTING ANALYTICS

PROJECT LIFE CYCLE ANALYTICS

CAPACITY PLANNING ANALYTICS

RISK (SWOT) ANALYTICS

QUALITY ASSURANCE ANALYTICS

INTERNATIONAL VALUATION ANALYTICS

Tasks - BASELINE / RE-BASELINE EVM ANALYTICS

Show by Status

Show as One List

Overdue Tasks

Sort by hierarchy ordering

ID	Title	Description	Linked To	Assigned Users	Assigned Groups	Start Date	Due Date	Completion Date	Total Budget	Expended	Percent Compl
No Overdue Tasks Found											

Ongoing Tasks

Sort by hierarchy ordering

ID	Title	Description	Linked To	Assigned Users	Assigned Groups	Start Date	Due Date	Completion Date	Total Budget	Expended	Percent Compl
No Ongoing Tasks Found											

Completed Tasks

Sort by hierarchy ordering

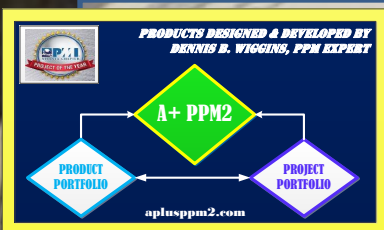
ID	Title	Description	Linked To	Assigned Users	Assigned Groups	Start Date	Due Date	Completion Date	Total Budget	Expended	Percent Compl
----	-------	-------------	-----------	----------------	-----------------	------------	----------	-----------------	--------------	----------	---------------

AUTOMATIC COLOR CODING –

YELLOW (1 WEEK PRIOR TO DUE DATE)

RED (WEEK DUE)

PAGE 40 OF 44



# ANALYTICS PLUS PROJECT MGR (A+ PM)

## AGENDA & MINUTES

PORT 1 - A+ PM 1 V6.0 ORGANIZATION - PROJECT NAME

( expand all | collapse all )

FINAL: A+ PM PROJECT STATUS ANALYTICS - P#1XXX

PROJECT METRIC ANALYTICS

STEERING COMMITTEE ANALYTICS

GENERAL ACCOUNTING ANALYTICS

PROJECT LIFE CYCLE ANALYTICS

CAPACITY PLANNING ANALYTICS

RISK (SWOT) ANALYTICS

QUALITY ASSURANCE ANALYTICS

INTERNATIONAL VALUATION ANALYTICS

A+ PM AGENDA / MINUTES

Project:

Meeting Leader:

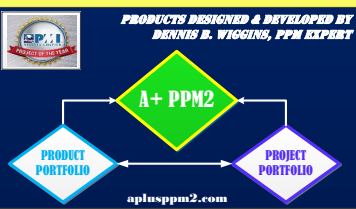
Date / Time:

Conference Bridge:

CORE TEAM	DEPARTMENT	TITLE
1.		
2.		
3.		
4.		
5.		

COMMUNICATION CENTRAL  
- NO MORE EMAILS





# ANALYTICS PLUS PROJECT MGR (A+ PM) AIR LOG & RACI METHODOLOGY

PORT 1 - A+ PM 1 V6.0 ORGANIZATION - PROJECT NAME

( expand all | collapse all )

- [-] [!] FINAL: A+ PM PROJECT STATUS ANALYTICS - P#1X0X
  - [+] [!] PROJECT METRIC ANALYTICS
  - [+] [!] STEERING COMMITTEE ANALYTICS
  - [+] [!] GENERAL ACCOUNTING ANALYTICS
  - [+] [!] PROJECT LIFE CYCLE ANALYTICS
  - [+] [!] CAPACITY PLANNING ANALYTICS
  - [+] [!] RISK (SWOT) ANALYTICS
  - [+] [!] QUALITY ASSURANCE ANALYTICS
  - [+] [!] INTERNATIONAL VALUATION ANALYTICS

## AIR LOG

ACTION ITEM (A)	ISSUES (I)	RISKS (R)
1.		
2.		
3.		
4.		
5.		

## RACI METHODOLOGY - ACTION ITEMS (A)

RESPONSIBLE (R)	ACCOUNTABLE (A)	CONSULTED (C)	INFORMED (I)
1.			

COMMUNICATION PROFICIENCY



PRODUCTS DESIGNED & DEVELOPED BY  
DENNIS D. WIGGINS, PPM EXPERT

A+ PPM2

PRODUCT  
PORTFOLIO

PROJECT  
PORTFOLIO

[aplusppm2.com](http://aplusppm2.com)



THE END