

HUMAN HEALTH AND DISEASE



Human Health and Disease

This course explores the relationship between the human anatomy and health and disease.

Complementary therapies aim to treat the whole person, not just the disease or the symptoms. Understanding the human anatomy, physiology and health and disease is crucial to develop effective treatment plans and understanding the symptoms experienced in disease states.

Knowledge and best practice in this field are constantly changing and new research and experience are broadening our understanding.

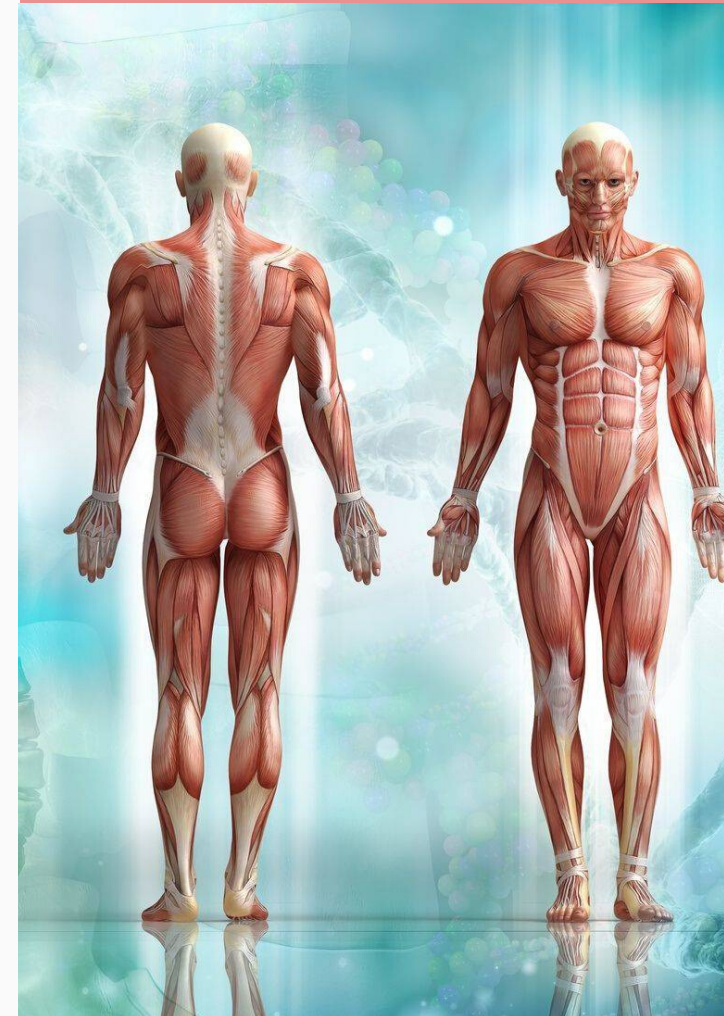
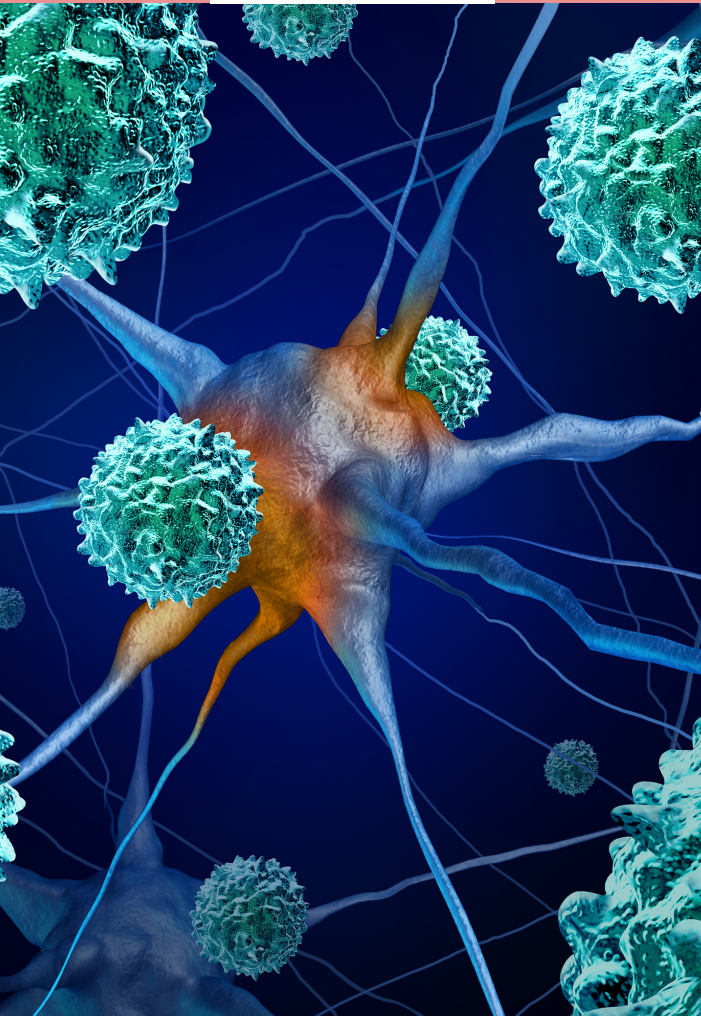
You will learn how the body works in normal conditions and when things go wrong.

CONTACT US
39A Skellow Road
Carcroft
DONCASTER
South Yorkshire
DN6 8HQ
01302 96558

e: enquiries@centrewellbeing.co.uk

THE TRAINING CENTRE OF WELLBEING LIMITED

Human Health and Disease
Level 3 Diploma





CURRICULUM

You will cover:

Mechanisms of disease
developmental, congenital and
childhood disorders and diseases

Immunologic conditions

Conditions of:

The endocrine system

Ears and eyes

Integumentary system

Musculoskeletal system

Digestive system

Respiratory System

Circulatory system

Urinary system

Reproductive system

Neurological conditions

Mental disorders

Disorders from trauma

ABOUT THE COURSE

COST: £499

DURATION: 12 monthly classes of 2 hours

ACCREDITATION: IPHM ANH

ENTRY REQUIREMENTS: Studying or studied
level 3 Anatomy and Physiology

HOME STUDY: 120 hours

MORE INFORMATION

Understanding the human body and
pathologies will help you to understand your
clients symptoms and plan effective treatment
plans.

IS THIS COURSE FOR YOU?

This course is for therapists that are serious about movements in
conventional medicine and wish to gain an advanced level of
understanding about the human body and diseases.

WHATS INCLUDED?

Your training includes:

Classroom sessions, assessments, manuals and workbooks.

Accredited by the International Practitioners of Holistic Medicine