



NOTICE OF RACE
WHITBY 50
WHITBY YACHT CLUB
FRIDAY-SATURDAY JUNE 21-22, 2019

WHITBY YACHT CLUB IS THE RACE ORGANIZING AUTHORITY

1 RULES

- 1.1 The race will be governed by the rules as defined in *The Racing Rules of Sailing 2017-2020 Racing Rules of Sailing (RRS)*.
- 1.2 The prescriptions of *Sail Canada*, applicable Class Rules and the Sailing Instructions apply. The requirements of rule 75.2 shall not be grounds for protest. This changes Rule 60.1a.
- 1.3 The International Regulations for Preventing Collisions at Sea, 1972 will replace Part 2 of the *RRS* between 2000 hrs and 0600 hrs for the duration of the race.
- 1.4 Individuals and boats are strongly recommended to comply with the *World Sailing Offshore Special Regulations Category 3*. Skippers not meeting these regulations are strongly encouraged to file a sail plan with the coast guard and provide regular VHF updates on channel 16.
- 1.5 Stanchions, lifelines and pulpits and/or a longitudinal system of jackstays fitted in such a way that a crew member can clip on and move the full length of the yacht are required. Such a system should have a breaking strain of at least 2000 kg (4400 lbs).
- 1.6 *Outside Help* is modified to allow all forms of communication. Each yacht may communicate with any person, competitor, yacht or outside source of information available using any means available throughout the race. This changes Rule 41.
- 1.7 If there is a conflict between the Sailing Instructions and this Notice of Race, the Sailing Instructions will prevail.

2 ELIGIBILITY AND ENTRY

- 2.1 PHRF Spinnaker (FS), PHRF JAM (Jib and Main or NFS) and class divisions.
- 2.2 Participating boats will be split into Spinnaker and JAM divisions. If there are 5 or more boats in a class then they can request their own start. The division splits will be presented at the Skipper's Meeting and they will be posted on the Racing Notice board.
- 2.2 Entries are to be submitted on the accompanying registration form by mail to Whitby 50 Race Committee, Whitby Yacht Club, 701 Gordon St, P.O.Box 321, Whitby, Ontario L1N 5S4, Canada. They

may also be submitted by fax to (905) 668-6007 or by email to fleet@wyc.ca. Entries may also be submitted in person at the Whitby Yacht Club. Entries close at 1900 hrs 21 June 2019.

3 FEES

The Whitby "50" Fees for WYC Club Racers are included in the season's race fees. The entry fee for all other participating boats is \$20.00. All Skippers must sign the Insurance Certification and the Waiver, Release of Liability and Indemnification Agreement. Fee is payable in cash at the Skippers' meeting.

4 SCHEDULE

4.1 The race will be held starting not before 2000 hrs 21 June 2019 with a time limit of 1900 hrs 22 June 2019.

4.2 The Whitby Yacht Club serves a weekly TGIF dinner that will be available to racers in the clubhouse at 1800 hrs 21 June 2019. Racers will need to confirm their wishes to eat no later than Wednesday, 19 June 2019 and will be given preferential service at the start of the dinner service. A menu will be forwarded in mid June and posted to www.wycfleet.com. Cost of the meals is over and above the entry fee and must be paid with the fees on arrival on 21 June 2019.

5 MEASUREMENT

Each PHRF boat shall produce a valid PHRF-LO certificate. Boats racing in class division must have a valid class certificate applicable to their class.

6 SAILING INSTRUCTIONS

The sailing instructions will be available at www.wycfleet.com.

7 VENUE

7.1 Attachment A shows the location of the Whitby Yacht Club.

7.2 Attachment B shows the location of the racing areas.

8 THE COURSE

8.1 The diagram at Attachment B shows the course.

8.2 The Start will be between WYC Mark 9 (N 43° 49.708' W 78° 56.260') and the Signal Boat.

8.3 Head West to Toronto Harbour Outer Approach Light Spar Buoy T2 (N 43° 36.661' W 79° 20.78'). Location listed at Attachment A. Location listed only as a reference of current information available at the creation of this NOR. All participants are advised to confirm all course mark locations.

8.4 Head East back to Whitby. Finish at WYC Mark 9.

9 COMPETITOR'S BRIEFING (SKIPPER'S MEETING)

A mandatory Skippers' Meeting will be on 21 June at 1900 hrs.

10 RADIO COMMUNICATION

The Race Committee will use VHF Channel 71 for this event.

11 AWARDS

Flags for the overall division winners in 1st, 2nd and 3rd place will be awarded on WYC Awards Night November 16, 2019.

12 DISCLAIMER OF LIABILITY

Competitors participate in the regatta entirely at their own risk. See RRS 4, Decision to Race. The organizing authority will not accept any liability for material damage or personal injury or death sustained in conjunction with or prior to, during, or after the race.

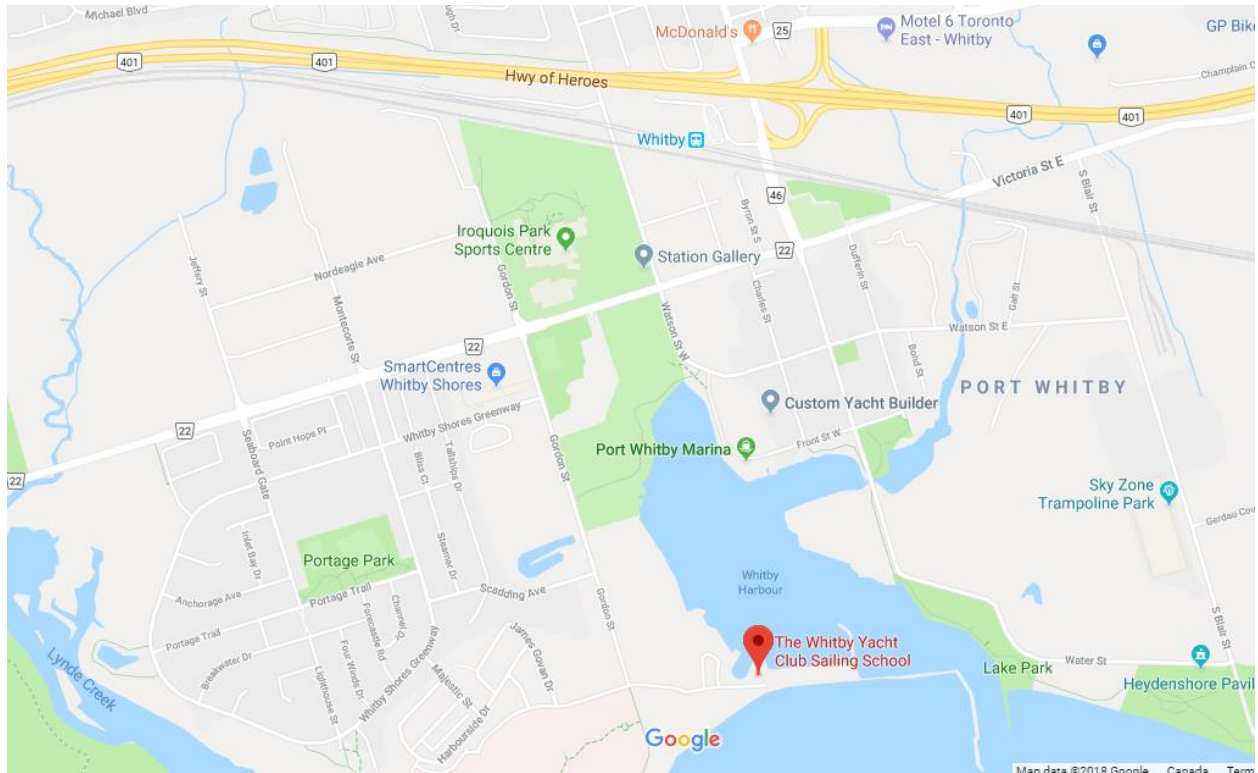
13 INSURANCE

Each participating boat shall be insured with valid third-party liability insurance. Proof of Insurance may be requested at registration or check-in time.

14 FURTHER INFORMATION

For further information please contact the Paul Duff, WYC Fleet Captain at fleet@wycfleet.com.

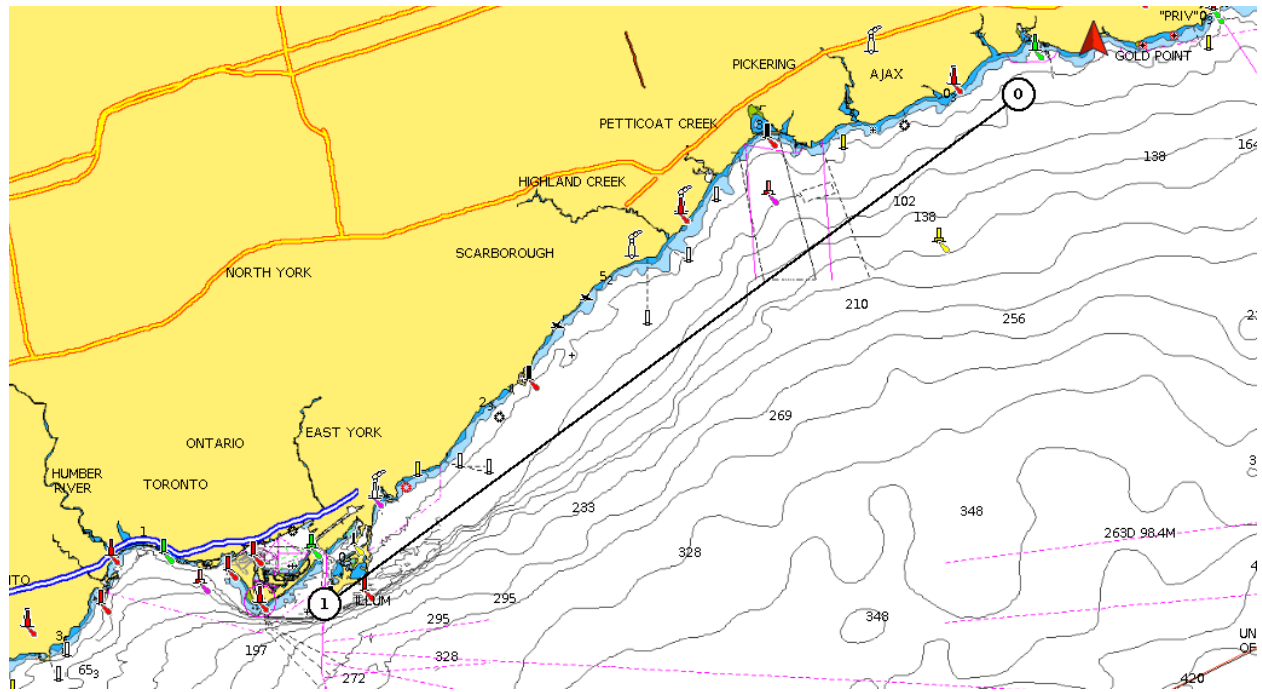
ATTACHMENT A LOCATION OF WHITBY YACHT CLUB



Directions

Take Highway 401 to exit 410 Brock St. Travel South on Brock St to Victoria St W. Turn Right on Victoria St W to Gordon St. Turn Left on Gordon St. Proceed South on Gordon St to the stop sign when Gordon St curves right. Turn Left at the stop sign and proceed to the main gate.

ATTACHMENT B RACING AREA



Mark	Location	Description
Start	N 43° 49.708' W 78° 56.260'	Tethered polyethylene barrel painted yellow with a blue number 9 painted in three places.
Turn	N 43° 36.661' W 79° 20.78'	Red spar marked T2