

# TOUGHEST PALLETS

IN THE WORLD

**jeco** | plastic  
products

## JECO PLASTIC PALLETS

PRODUCT CATALOG  
MAY 2017



**jeco** | plastic  
products

885 Andico Road PO Box 26  
Plainfield, Indiana 46168-0026 USA  
Phone: +1-317-839-4943 Fax +1-317-839-1209  
[www.jecoplastics.com](http://www.jecoplastics.com)

business partner of  
**HEIDELBERG**

**opc** OLIVER PÄTZOLD  
CONSULTING  
BANDEROLEN & MEHR

Phone: +49-(0) 2161-9028039  
[www.op-consuling.eu](http://www.op-consuling.eu)  
[info@opconsuling.eu](mailto:info@opconsuling.eu)  
[www.logistikpaletten.eu](http://www.logistikpaletten.eu)

## ABOUT JECO PLASTICS PRODUCTS

JECO Plastic Products LLC., founded in 1979, is a privately held, internationally recognized leader in the development and production of high end plastic pallets. JECO's reputation for precision rotationally molded, highly durable pallets has earned it customers on all seven continents. JECO combines in-depth knowledge of all facets of pallet design, select high quality virgin materials, top quality molds and in-house production in order to produce world class pallets and other material handling solutions.

As JECO's Expertise has grown, so has the company's capabilities. In addition to rotational molding, JECO has unique thermoforming production equipment. JECO leverages its understanding of logistics, product design and manufacturing capabilities in order to deliver a broad range of custom solutions for handling of material to our customers and OEM. With manufacturing and headquarters in Plainfield, Indiana, USA, JECO is centrally located to both U.S. based customers as well as key transportation nodes for export to customers worldwide.

## PRINTING PRESS AND DIE CUTTERS PALLETS

JECO PLASTICS PRODUCTS manufactures a complete line of plastic pallets for the printing industry, and also pallets are also available to fit in the feeder and delivery of virtually any printing press and die cutter ever made. A broad variety of tops are available, including ribbed, flat, stackable and other special configurations. Most JECO pallets for the printing industry can be produced on short notice, using existing tooling. JECO pallets are also available for use in handling paper and board roll stock. JECO roll pallets have been tested extensively and are known for strength and the ability to handle large, heavy rolls and protect them from damage in storage.

## WHY PLASTIC PALLETS?

Plastic pallets offer printers a consistent, trouble-free alternative to the wood pallets often used in commercial printing plants. Unlike conventional wood pallets, plastic pallets offer a maintenance-free means of moving high-value printed materials in the printing plant. Plastic pallets need no maintenance and are much safer than wood pallets because they do not splinter or collapse under the weight of finished product. The pure LLDPE material used is highly resistant to microbes and bacteria, so Jeco Pallets are hygienic and can be easily cleaned. In addition, high tolerance and less weight are beneficial to the users. The expected life of wood pallets is generally measured in months, while plastic pallets provide consistent service for years – often for as long as the press for which they are designed.

Because of their long life, Jeco Pallets can be depreciated as a capital asset. Jeco Plastics offers a full line of more than 200 plastic pallets, with several configurations available for virtually every press in service today. In addition, the Jeco product line includes specialty pallets for mill rolls and other needs. Jeco pallets are available in different colors, and many customers use these to designate their use or location.

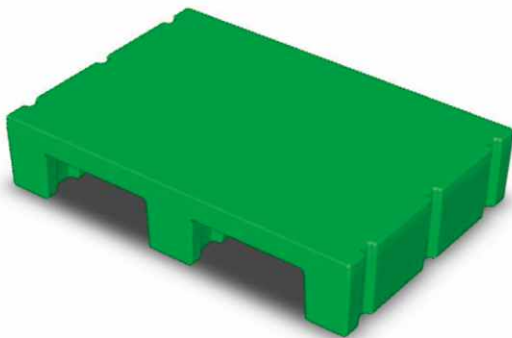


## JECO PALLET D-293wo



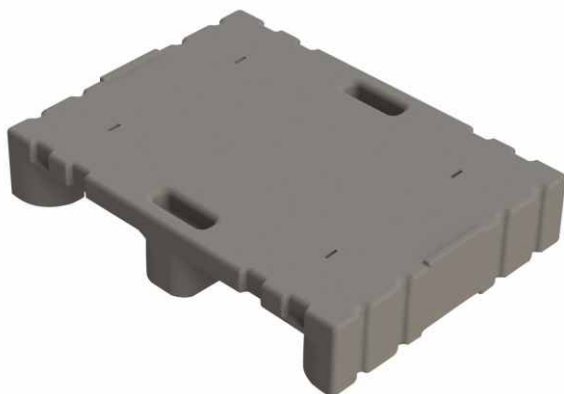
<b>Product Number</b>	D-293wo
<b>Dimensions</b>	23.5 x 14 x 8 in (597 x 355 x 203 mm)
<b>Color Options</b>	Available
<b>Top</b>	Ribbed
<b>Reinforcement</b>	No Steel
<b>Forklift/Jack Access</b>	2 sides/2 sides

## JECO PALLET D-291wo



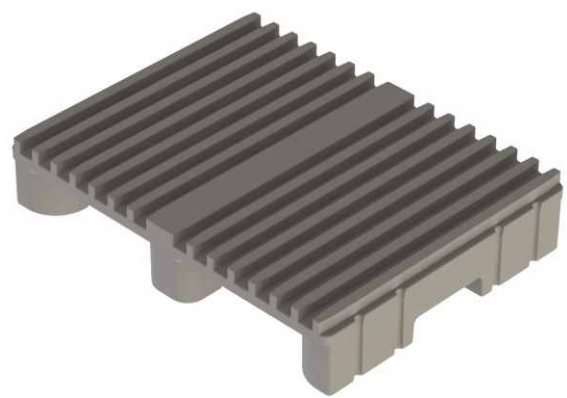
<b>Product Number</b>	D-291wo
<b>Dimensions</b>	29.13 x 20.47 x 5.91 in (740 x 520 x 150 mm)
<b>Color Options</b>	Available
<b>Top</b>	Smooth
<b>Reinforcement</b>	No Steel
<b>Forklift/Jack Access</b>	2 sides/2 sides

## JECO PALLET D-262wo



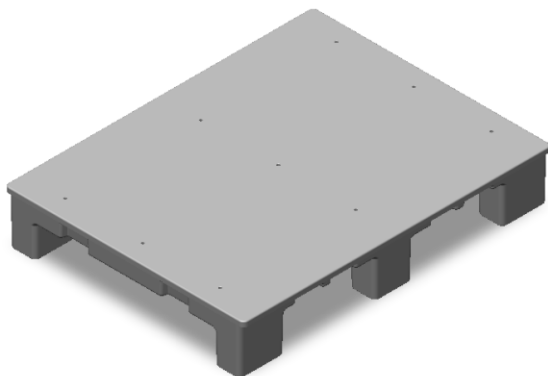
<b>Product Number</b>	D-262wo
<b>Dimensions</b>	31.5 x 23.62 x 5.91 in (800 x 600 x 150 mm)
<b>Color Options</b>	Available
<b>Top</b>	Smooth
<b>Reinforcement</b>	No Steel
<b>Forklift/Jack Access</b>	2 sides/2 sides

## JECO PALLET D-429wo



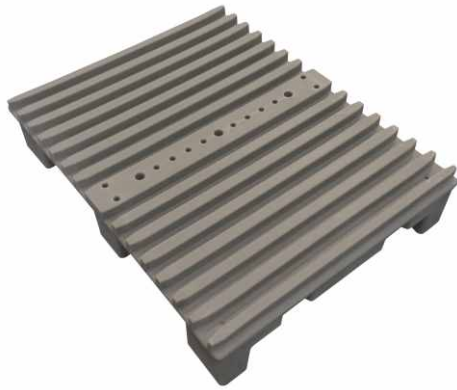
<b>Product Number</b>	D-429wo
<b>Dimensions</b>	31.5 x 24.41 x 6.89 in (800 x 620 x 175 mm)
<b>Color Options</b>	Available
<b>Top</b>	Ribbed
<b>Reinforcement</b>	No Steel
<b>Forklift/Jack Access</b>	2 sides/2 sides

## JECO PALLET D-521wo



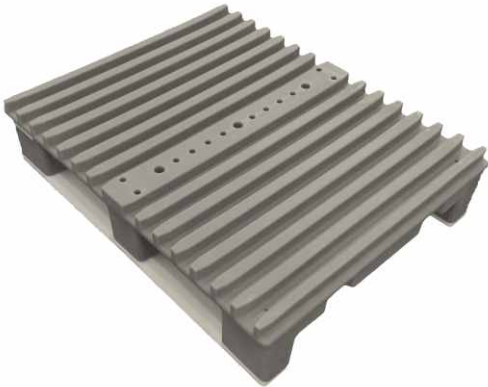
<b>Product Number</b>	D-521wo
<b>Dimensions</b>	31.5 x 24.41 x 5.25 in (800 x 620 x 133 mm)
<b>Color Options</b>	Available
<b>Top</b>	Smooth
<b>Reinforcement</b>	No Steel
<b>Forklift/Jack Access</b>	2 sides/2 sides

## JECO PALLET D-504



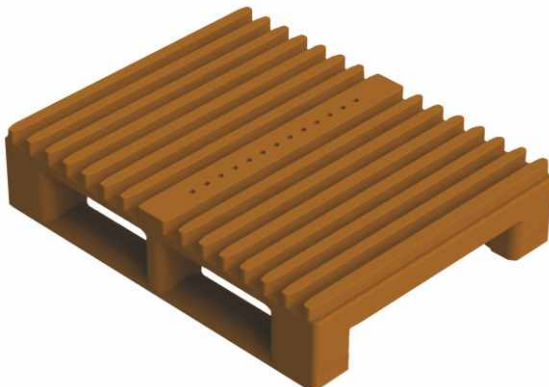
<b>Product Number</b>	D-504
<b>Dimensions</b>	31.5 x 24.41 x 6.18 in (800 x 620 x 157 mm)
<b>Color Options</b>	Available
<b>Top</b>	Ribbed
<b>Reinforcement</b>	Steel
<b>Forklift/Jack Access</b>	4 sides/4 sides

## JECO PALLET D-504R



<b>Product Number</b>	D-504R
<b>Dimensions</b>	31.5 x 24.41 x 6.71 in (800 x 620 x 170 mm)
<b>Color Options</b>	Available
<b>Top</b>	Ribbed
<b>Reinforcement</b>	Steel
<b>Forklift/Jack Access</b>	4 sides/4 sides

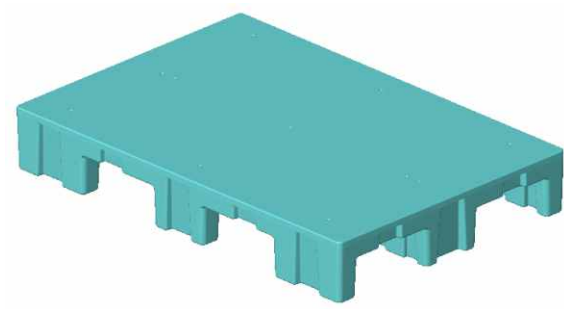
## JECO PALLET D-323-3



<b>Product Number</b>	D-323-3
<b>Dimensions</b>	31.5 x 24.41 x 6.89 in (800 x 620 x 175 mm)
<b>Color Options</b>	Only brick red
<b>Top</b>	Ribbed
<b>Reinforcement</b>	Steel
<b>Forklift/Jack Access</b>	4 sides/2 sides

\*not designed for open rack storage

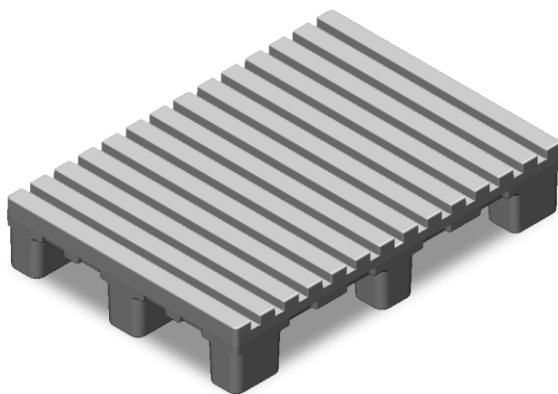
## JECO PALLET D-513



<b>Product Number</b>	D-513
<b>Dimensions</b>	37.40 x 25.59 x 5.51 in (950 x 650 x 140 mm)
<b>Color Options</b>	Available
<b>Top</b>	Smooth
<b>Reinforcement</b>	Steel
<b>Forklift/Jack Access</b>	4 sides/4 sides

<b>Product Number</b>	D-513wo
<b>Dimensions</b>	37.40 x 25.59 x 5.51 in (950 x 650 x 140 mm)
<b>Color Options</b>	Available
<b>Top</b>	Smooth
<b>Reinforcement</b>	No Steel
<b>Forklift/Jack Access</b>	4 sides/4 sides

## JECO PALLET D-159

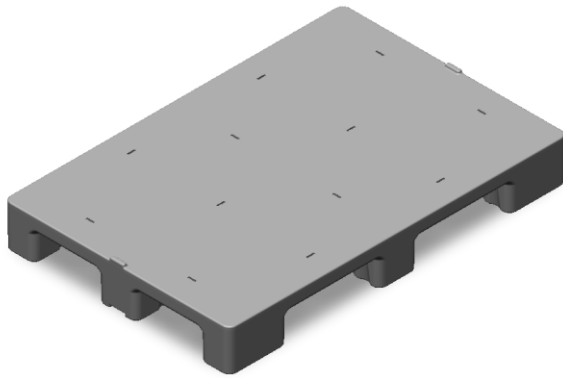


<b>Product Number</b>	D-159
<b>Dimensions</b>	41 x 29 x 7.5 in (1041 x 737 x 191 mm)
<b>Color Options</b>	Available
<b>Top</b>	Ribbed
<b>Reinforcement</b>	Steel
<b>Forklift/Jack Access</b>	4 sides/4 sides

<b>Product Number</b>	D-159wo
<b>Dimensions</b>	41 x 29 x 7.5 in (1041 x 737 x 191 mm)
<b>Color Options</b>	Available
<b>Top</b>	Ribbed
<b>Reinforcement</b>	No Steel
<b>Forklift/Jack Access</b>	4 sides/4 sides



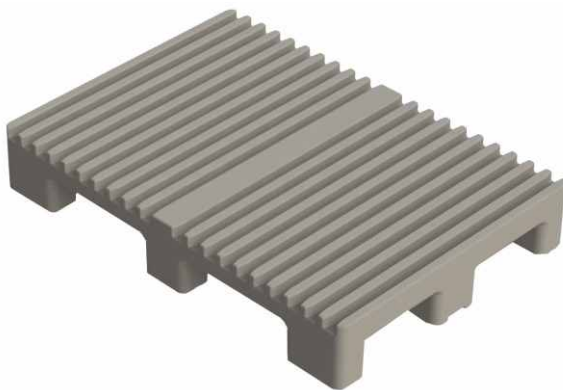
## JECO PALLET D-285



<b>Product Number</b>	D-285
<b>Dimensions</b>	42.32 x 29.92 x 5.91 in (1075 x 760 x 150 mm)
<b>Color Options</b>	Available
<b>Top</b>	Smooth
<b>Reinforcement</b>	Steel
<b>Forklift/Jack Access</b>	4 sides/4 sides

<b>Product Number</b>	D-285wo
<b>Dimensions</b>	42.32 x 29.92 x 5.91 in (1075 x 760 x 150 mm)
<b>Color Options</b>	Available
<b>Top</b>	Smooth
<b>Reinforcement</b>	No Steel
<b>Forklift/Jack Access</b>	4 sides/4 sides

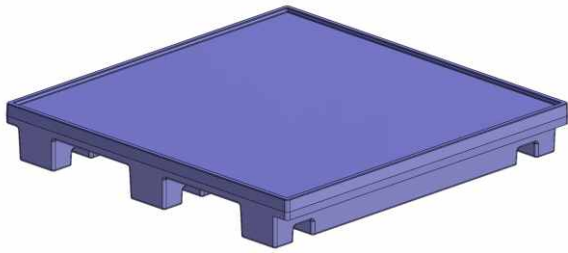
## JECO PALLET D-432



<b>Product Number</b>	D-432
<b>Dimensions</b>	42.32 x 29.92 x 6.89 in (1075 x 760 x 175 mm)
<b>Color Options</b>	Available
<b>Top</b>	Ribbed
<b>Reinforcement</b>	Steel
<b>Forklift/Jack Access</b>	4 sides/4 sides

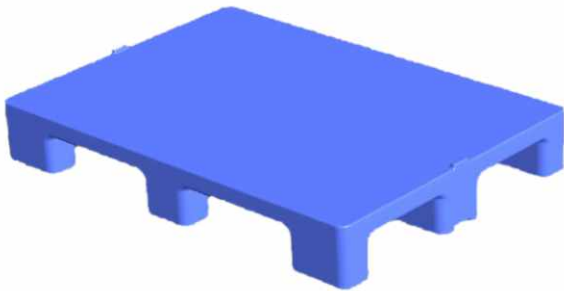
<b>Product Number</b>	D-432wo
<b>Dimensions</b>	42.32 x 29.92 x 6.89 in (1075 x 760 x 175 mm)
<b>Color Options</b>	Available
<b>Top</b>	Ribbed
<b>Reinforcement</b>	No Steel
<b>Forklift/Jack Access</b>	4 sides/4 sides

## JECO PALLET 445445wo



<b>Product Number</b>	445445wo
<b>Dimensions</b>	45.5 x 45.5 x 6.5 in (1156 x 1156 x 165 mm)
<b>Color Options</b>	Available
<b>Top</b>	Smooth with Lip
<b>Reinforcement</b>	No Steel
<b>Forklift/Jack Access</b>	2 sides/2 sides

## JECO PALLET D-286

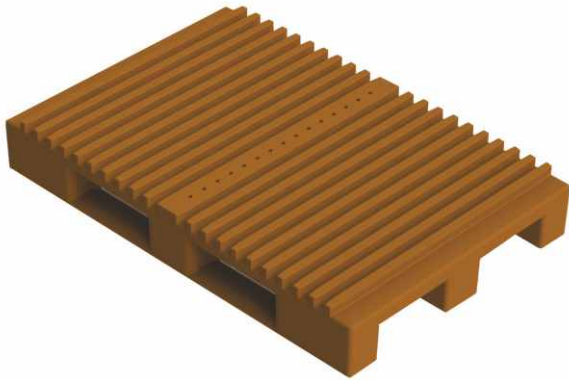


<b>Product Number</b>	D-286
<b>Dimensions</b>	47.24 x 31.5 x 5.91 in (1200 x 800 x 150 mm)
<b>Color Options</b>	Available
<b>Top</b>	Smooth
<b>Reinforcement</b>	Steel
<b>Forklift/Jack Access</b>	4 sides/4 sides

<b>Product Number</b>	D-286wo
<b>Dimensions</b>	47.24 x 31.5 x 5.91 in (1200 x 800 x 150 mm)
<b>Color Options</b>	Available
<b>Top</b>	Smooth
<b>Reinforcement</b>	No Steel
<b>Forklift/Jack Access</b>	4 sides/4 sides



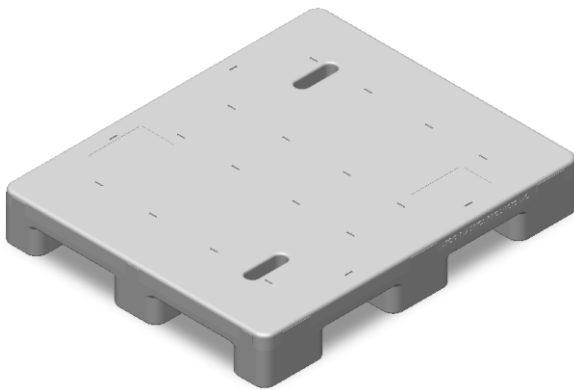
## JECO PALLET D-330



<b>Product Number</b>	D-330
<b>Dimensions</b>	47.24 x 31.5 x 6.89 in (1200 x 800 x 175 mm)
<b>Color Options</b>	Only brick red
<b>Top</b>	Ribbed
<b>Reinforcement</b>	Steel
<b>Forklift/Jack Access</b>	4 sides/2 sides

\*not designed for open rack storage

## JECO PALLET D-265

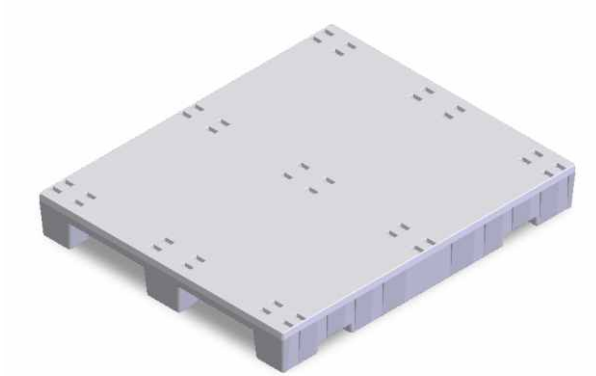


<b>Product Number</b>	D-265-2B
<b>Dimensions</b>	47.24 x 39.37 x 6.89 in (1200 x 1000 x 175 mm)
<b>Color Options</b>	Not Available
<b>Top</b>	Smooth
<b>Reinforcement</b>	Steel (2 Bars)
<b>Forklift/Jack Access</b>	4 sides/4 sides

<b>Product Number</b>	D-265-4B
<b>Dimensions</b>	47.24 x 39.37 x 6.89 in (1200 x 1000 x 175 mm)
<b>Color Options</b>	Not Available
<b>Top</b>	Smooth
<b>Reinforcement</b>	Steel (4 Bars)
<b>Forklift/Jack Access</b>	4 sides/4 sides

<b>Product Number</b>	D-265wo
<b>Dimensions</b>	47.24 x 39.37 x 6.89 in (1200 x 1000 x 175 mm)
<b>Color Options</b>	Not Available
<b>Top</b>	Smooth
<b>Reinforcement</b>	No Steel
<b>Forklift/Jack Access</b>	4 sides/4 sides

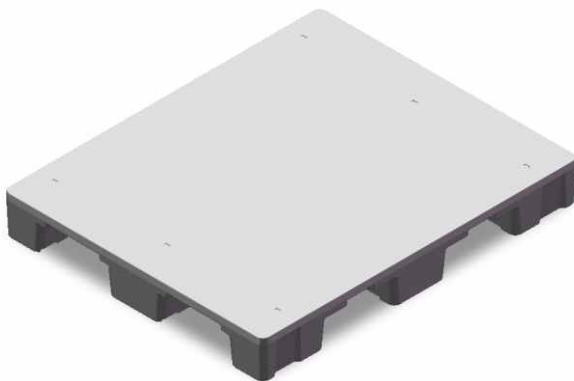
## JECO PALLET C-113



<b>Product Number</b>	C-113
<b>Dimensions</b>	48 x 40 x 6 in (1219 x 1016 x 152 mm)
<b>Color Options</b>	Available
<b>Top</b>	Smooth
<b>Reinforcement</b>	Steel
<b>Forklift/Jack Access</b>	4 sides/4 sides

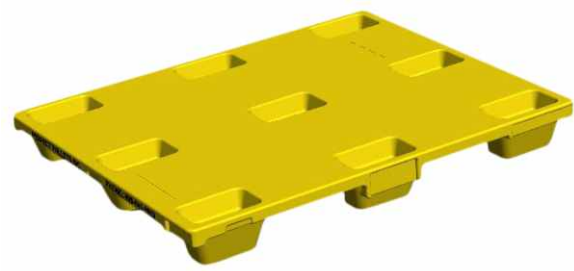
<b>Product Number</b>	C-113wo
<b>Dimensions</b>	48 x 40 x 6 in (1219 x 1016 x 152 mm)
<b>Color Options</b>	Available
<b>Top</b>	Smooth
<b>Reinforcement</b>	No Steel
<b>Forklift/Jack Access</b>	4 sides/4 sides

## JECO PALLET D-158



<b>Product Number</b>	D-158
<b>Dimensions</b>	48.75 x 40 x 6 in (1238 x 1016 x 152 mm)
<b>Color Options</b>	Not Available
<b>Top</b>	Smooth
<b>Reinforcement</b>	Steel
<b>Forklift/Jack Access</b>	4 sides/4 sides

## JECO PALLET D-269wo



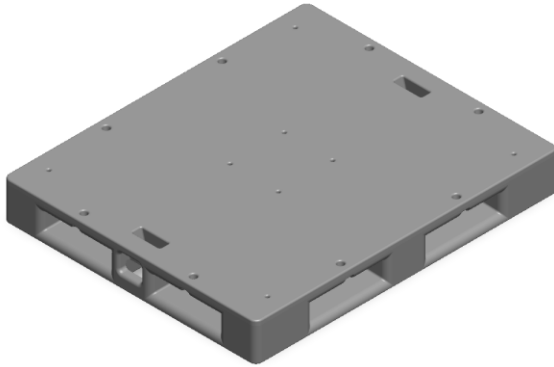
<b>Product Number</b>	D-269wo
<b>Dimensions</b>	48 x 40 x 5.38 in (1219 x 1016 x 137 mm)
<b>Color Options</b>	Available
<b>Top</b>	Smooth
<b>Reinforcement</b>	No Steel
<b>Forklift/Jack Access</b>	4 sides/4 sides

## JECO PALLET D-427



<b>Product Number</b>	D-427
<b>Dimensions</b>	48 x 40 x 5.5 in (1219 x 1016 x 140 mm)
<b>Color Options</b>	Not Available
<b>Top</b>	Smooth
<b>Reinforcement</b>	Steel
<b>Forklift/Jack Access</b>	4 sides/none

## JECO PALLET D-295wo



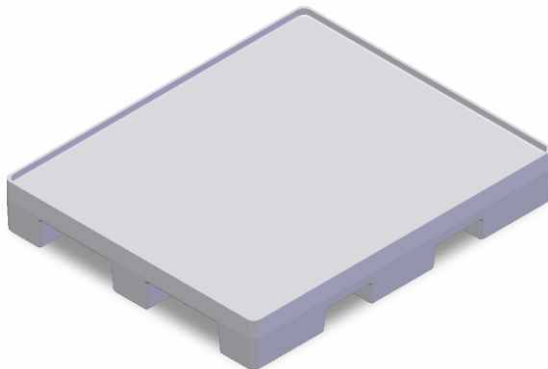
<b>Product Number</b>	D-295wo
<b>Dimensions</b>	48 x 40 x 6 in (1219 x 1016 x 152 mm)
<b>Color Options</b>	Available
<b>Top</b>	Smooth
<b>Reinforcement</b>	No Steel
<b>Forklift/Jack Access</b>	4 sides/none

## JECO PALLET D-101



<b>Product Number</b>	D-101
<b>Dimensions</b>	48 x 42 x 6 in (1219 x 1067 x 152 mm)
<b>Color Options</b>	Not Available
<b>Top</b>	Smooth
<b>Reinforcement</b>	Steel
<b>Forklift/Jack Access</b>	2 sides/2 sides

## JECO PALLET D-132wo



<b>Product Number</b>	D-132wo
<b>Dimensions</b>	48 x 40 x 7 in (1219 x 1016 x 178 mm)
<b>Color Options</b>	Not Available
<b>Top</b>	Smooth with Lip
<b>Reinforcement</b>	No Steel
<b>Forklift/Jack Access</b>	4 sides/4 sides

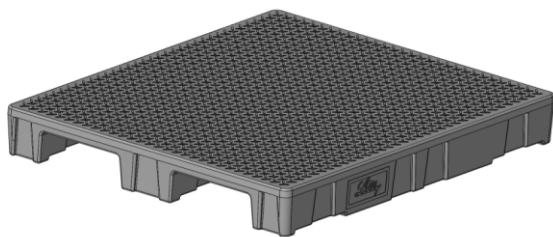
## JECO PALLET D-326



<b>Product Number</b>	D-326
<b>Dimensions</b>	48 x 42 x 6 in (1219 x 1067 x 152 mm)
<b>Color Options</b>	Available
<b>Top</b>	Smooth
<b>Reinforcement</b>	Steel (5 Bars)
<b>Forklift/Jack Access</b>	2 sides/2 sides

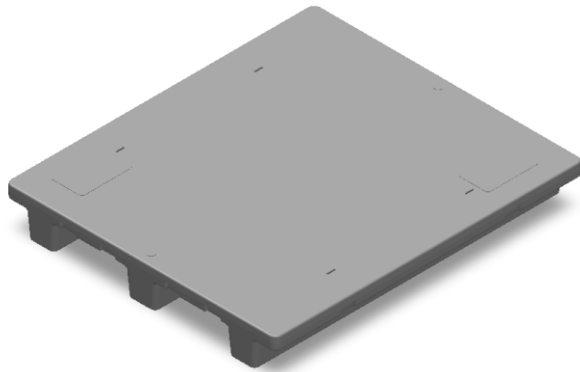
<b>Product Number</b>	D-326wo
<b>Dimensions</b>	48 x 42 x 6 in (1219 x 1067 x 152 mm)
<b>Color Options</b>	Available
<b>Top</b>	Smooth
<b>Reinforcement</b>	No Steel
<b>Forklift/Jack Access</b>	2 sides/2 sides

## JECO PALLET D-176wo



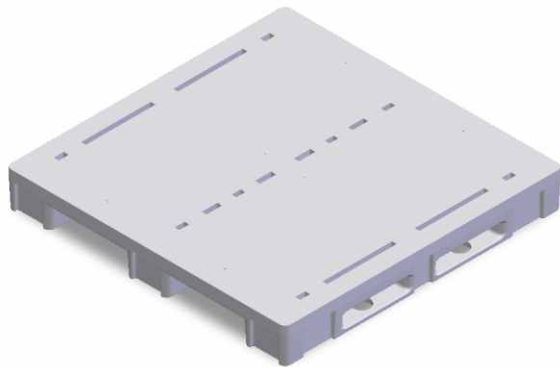
<b>Product Number</b>	D-176wo
<b>Dimensions</b>	48 x 42 x 6 in (1219 x 1076 x 152 mm)
<b>Color Options</b>	Available
<b>Top</b>	Skid Plate Surface
<b>Reinforcement</b>	No Steel
<b>Forklift/Jack Access</b>	2 sides/2 sides

## JECO PALLET D-263wo



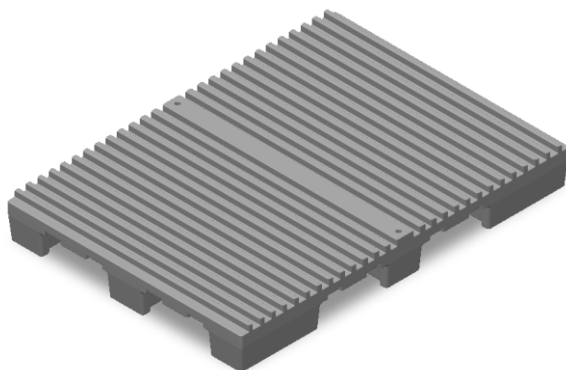
<b>Product Number</b>	D-263wo
<b>Dimensions</b>	48 x 42 x 6 in (1219 x 1067 x 152 mm)
<b>Color Options</b>	Available
<b>Top</b>	Smooth
<b>Reinforcement</b>	No Steel
<b>Forklift/Jack Access</b>	2 sides/2 sides

## JECO PALLET D-417



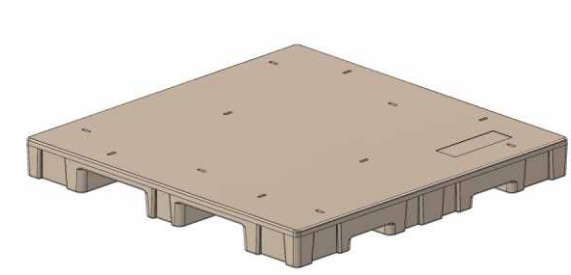
<b>Product Number</b>	D-417
<b>Dimensions</b>	48 x 48 x 6.25 in (1219 x 1219 x 159 mm)
<b>Color Options</b>	Available
<b>Top</b>	Smooth
<b>Reinforcement</b>	No Steel
<b>Forklift/Jack Access</b>	2 sides/2 sides

## JECO PALLET D-519



<b>Product Number</b>	D-519
<b>Dimensions</b>	56.5 x 40.35 x 6.79 in (1435 x 1025 x 172,5 mm)
<b>Color Options</b>	Available
<b>Top</b>	Ribbed
<b>Reinforcement</b>	Steel
<b>Forklift/Jack Access</b>	4 sides/4 sides

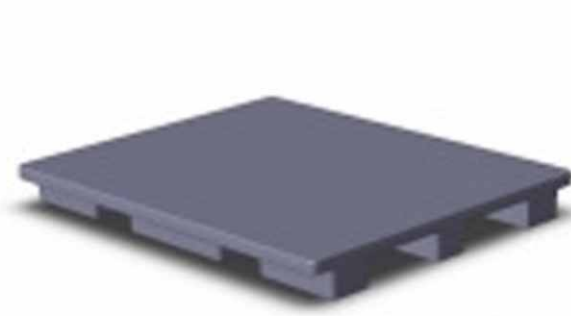
## JECO PALLET D-184-5HD



<b>Product Number</b>	D-184-5HD
<b>Dimensions</b>	57 x 57 x 6 in (1448 x 1448 x 152 mm)
<b>Color Options</b>	Available
<b>Top</b>	Smooth
<b>Reinforcement</b>	Steel (5 Bars)
<b>Forklift/Jack Access</b>	4 sides/2 sides

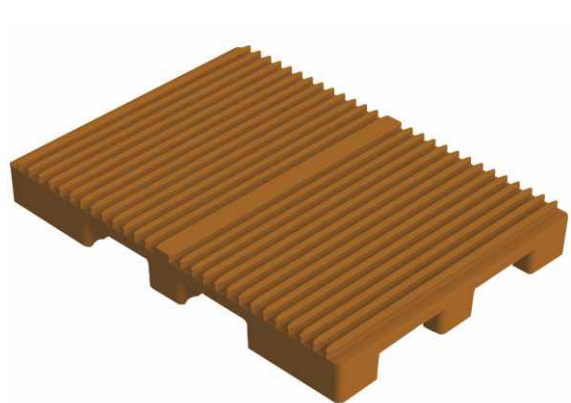
\* Hand truck not recommended

## JECO PALLET D-92



<b>Product Number</b>	D-92
<b>Dimensions</b>	60 x 48 x 6 in (1524 x 1219 x 152 mm)
<b>Color Options</b>	Available
<b>Top</b>	Smooth
<b>Reinforcement</b>	Steel
<b>Forklift/Jack Access</b>	4 sides/2 sides

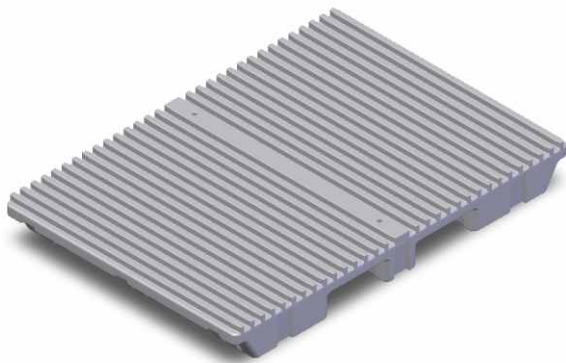
## JECO PALLET D-342



<b>Product Number</b>	D-342
<b>Dimensions</b>	57.87 x 41.73 x 6.89 in (1470 x 1060 x 175 mm)
<b>Color Options</b>	Only brick red
<b>Top</b>	Ribbed
<b>Reinforcement</b>	Steel
<b>Forklift/Jack Access</b>	4 sides/4 sides

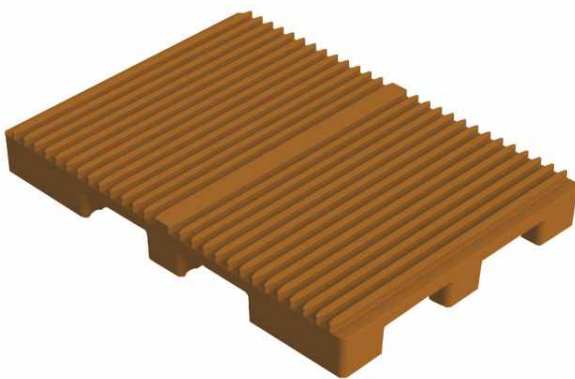


## JECO PALLET D-518



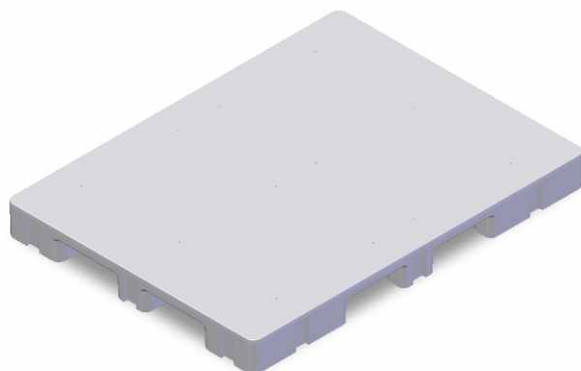
<b>Product Number</b>	D-518
<b>Dimensions</b>	63.78 x 44.09 x 6.89 in (1620 x 1120 x 175 mm)
<b>Color Options</b>	Available
<b>Top</b>	Ribbed
<b>Reinforcement</b>	Steel
<b>Forklift/Jack Access</b>	4 sides/4 sides

## JECO PALLET D-338



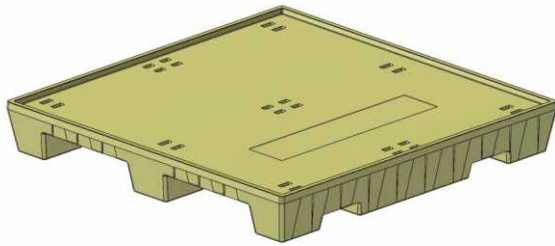
<b>Product Number</b>	D-338
<b>Dimensions</b>	64.57 x 48.03 x 6.89 in (1640 x 1220 x 175 mm)
<b>Color Options</b>	Only brick red
<b>Top</b>	Ribbed
<b>Reinforcement</b>	Steel
<b>Forklift/Jack Access</b>	4 sides/4 sides

## JECO PALLET D-494



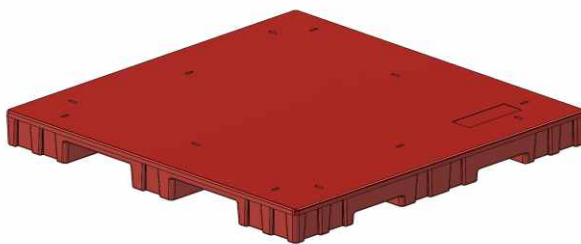
<b>Product Number</b>	D-494
<b>Dimensions</b>	64.57 x 48.03 x 5.91 in (1640 x 1220 x 150 mm)
<b>Color Options</b>	Only brick red
<b>Top</b>	Smooth
<b>Reinforcement</b>	Steel
<b>Forklift/Jack Access</b>	4 sides/4 sides

## JECO PALLET C-12



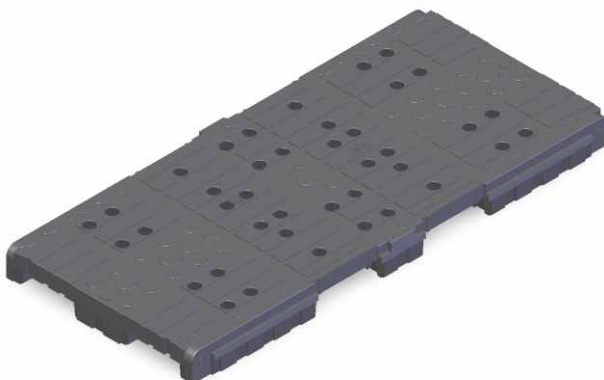
<b>Product Number</b>	C-12
<b>Dimensions</b>	49.75 x 49.75 x 6.75 in (1264 x 1264 x 172 mm)
<b>Color Options</b>	Available
<b>Top</b>	Smooth with Lip
<b>Reinforcement</b>	Steel
<b>Forklift/Jack Access</b>	4 sides/2 sides

## JECO PALLET D-194



<b>Product Number</b>	D-194
<b>Dimensions</b>	67 x 67 x 6 in (1702 x 1702 x 152 mm)
<b>Color Options</b>	Available
<b>Top</b>	Smooth
<b>Reinforcement</b>	Steel
<b>Forklift/Jack Access</b>	4 sides/2 sides

## JECO PALLET D-411



<b>Product Number</b>	D-411
<b>Dimensions</b>	117 x 54 x 7.75 in (2972 x 1372 x 197 mm)
<b>Color Options</b>	Available
<b>Top</b>	Smooth
<b>Reinforcement</b>	Steel
<b>Forklift/Jack Access</b>	4 sides/none

\*Requires special forklift due to size and weight

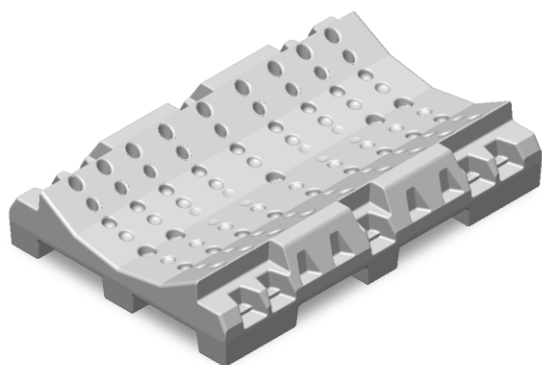
## ROLL HANDLING SOLUTIONS

### JECO PALLET D-458



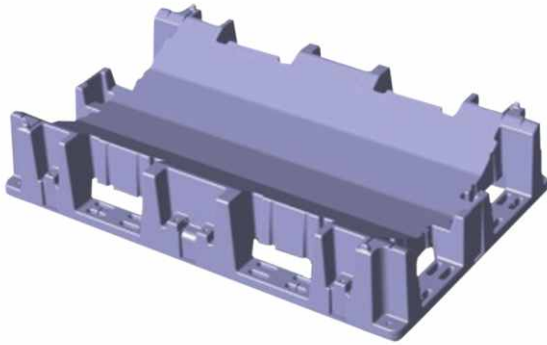
<b>Product Number</b>	D-458
<b>Dimensions</b>	48.75 x 40 x 13 in (1238 x 1016 x 330 mm)
<b>Color Options</b>	Not Available
<b>Top</b>	Roll
<b>Reinforcement</b>	Steel
<b>Forklift/Jack Access</b>	4 sides/4 sides

### JECO PALLET D-325



<b>Product Number</b>	D-325
<b>Dimensions</b>	63 x 43 x 12.17 in (1600 x 1092 x 309 mm)
<b>Color Options</b>	Available
<b>Top</b>	Roll
<b>Reinforcement</b>	Steel
<b>Forklift/Jack Access</b>	4 sides/4 sides

## JECO PALLET D-322



<b>Product Number</b>	D-322
<b>Dimensions</b>	67.25 x 42 x 13.25 in (1708 x 1067 x 337 mm)
<b>Color Options</b>	Not Available
<b>Top</b>	Roll
<b>Reinforcement</b>	Steel
<b>Forklift/Jack Access</b>	4 sides/none

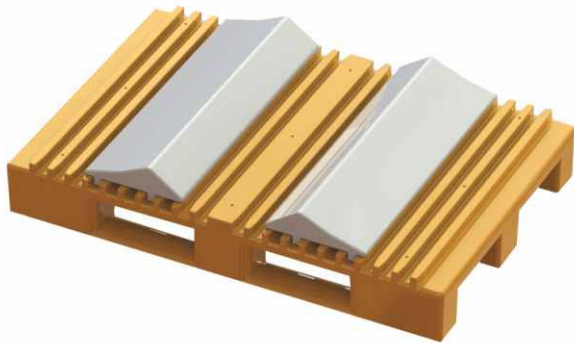
## JECO PALLET D-448



<b>Product Number</b>	D-448
<b>Dimensions</b>	110 x 54 x 16 in (2794 x 1372 x 406 mm)
<b>Color Options</b>	Available
<b>Top</b>	Roll
<b>Reinforcement</b>	Steel
<b>Forklift/Jack Access</b>	4 sides/none

\* Hand truck not recommended

## JECO ROLL CHOCKS D-396



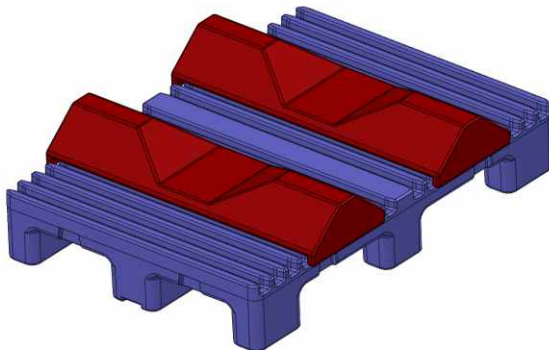
<b>Product Number</b>	ROLL CHOCKS D-396
-----------------------	-------------------

<b>Dimensions</b>	Adjustable, 30 x 10.82 x 2.95 in (765 x 275 x 75 mm)
-------------------	------------------------------------------------------------

\*Roll chocks used in conjunction with ribbed style pallets 29.92 in (760 mm) or wider

\*\*Custom sizes also available

## JECO ROLL CHOCKS 2 (Under development)



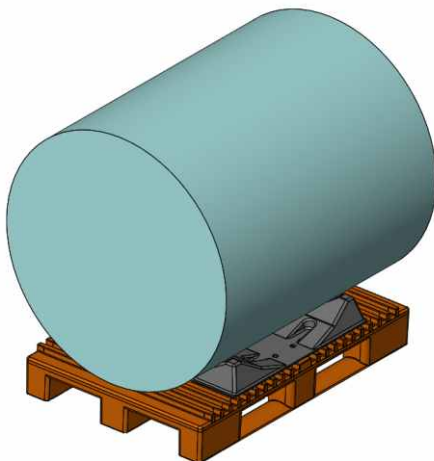
<b>Product Number</b>	ROLL CHOCKS 2
-----------------------	---------------

<b>Dimensions</b>	Adjustable, 29.92 x 10.82 x 2.95 in (760 x 275 x 75 mm)
-------------------	---------------------------------------------------------------

\*Roll chocks used in conjunction with ribbed style pallets 29.92 in (760 mm) or wider

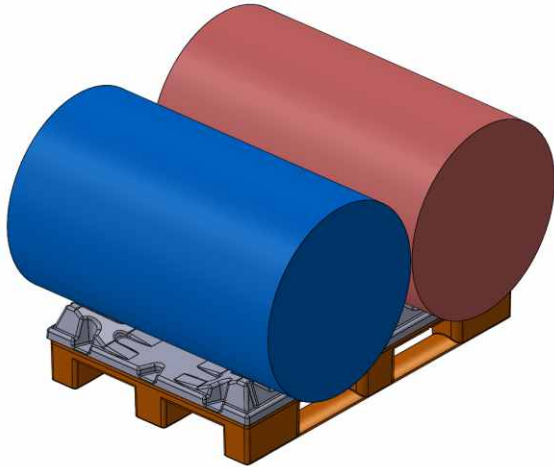
\*\*Custom sizes also available

## JECO ROLL DECK 1 (Under development)



<b>Product Number</b>	ROLL DECK 1
-----------------------	-------------

## JECO ROLL DECK 2 (Under development)

**Product Number**

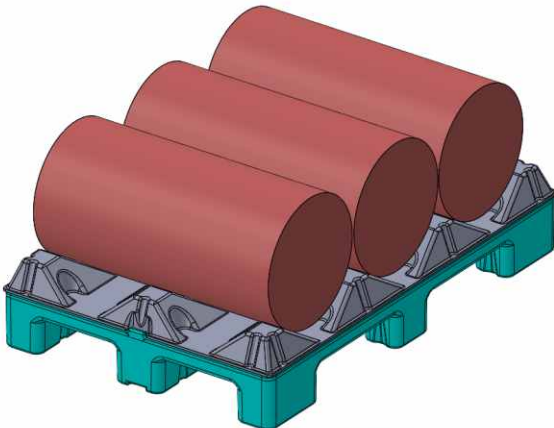
ROLL DECK 2

**Dimensions**47.24 x 31.5 in  
(1200 x 800)

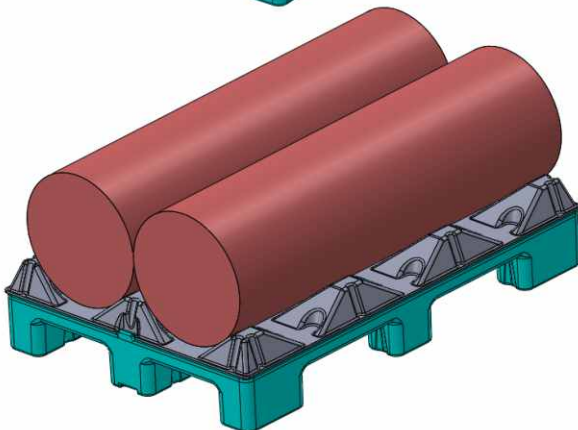
\*Roll deck used in conjunction with ribbed style  
pallets 31.5 in/800 mm) or wider

\*\*Custom sizes also available

## JECO ROLL DECK 3 (Under development)

**Product Number**

ROLL DECK 3





## RATIONALIZING THE COST OF PLASTIC PALLETS

Unquestionably, plastic pallets cost much more than wood pallets. But plastic pallets are readily cost justified in most printing plants. Here are some factors to consider:

**Pallet Life** – Wood pallets can be expected to last from 12 to 18 months, at most. Jeco pallets produced in the 1980s are still in use today.

**Repair and Maintenance** – Wood pallets often require maintenance to reseal loose nails or replace broken boards. Plastic pallets are virtually indestructible in normal use, and provide many years of maintenance-free service.

**Personnel Safety** – Unlike wood pallets, which often injure workers with splinters and nails, plastic pallets are completely worker-friendly. They are smooth, easy to handle, and safe in the workplace.

**Machine Safety** – Because pallets are used in the delivery of sheetfed presses and elsewhere in the print manufacturing workflow, wood pallets have the potential of damaging expensive equipment should they fail. Plastic pallets are significantly stronger and rarely cause such problems.

**Accounting Considerations** – Because the anticipated life of wood pallets is brief, most accountants recommend that these be expensed. Plastic pallets, on the other hand, have a much longer life expectancy, and can be capitalized and then depreciated over several years, much like equipment. This calculation significantly reduces the annual business cost of plastic pallets.

**Making the Calculation** – Many considerations influence their cost, but most printers find that plastic pallets provide a true return on investment in the second or third year of ownership. Jeco has developed several cost models which can be used to calculate the return on investment in plastic pallets. A Jeco representative would be pleased to assist in making the calculation for specific situations.







MADE IN THE USA

**jeco** | plastic  
products



Jeco pallets are rotationally molded  
using 100% pure virgin LLDPE.

The following color options are available:



If you cannot find a Jeco pallet for your application in this catalog  
please contact the Jeco headquarter.

**jeco** | plastic  
products

885 Andico Road PO Box 26  
Plainfield, Indiana 46168-0026 USA  
Phone: +1-317-839-4943 Fax +1-317-839-1209  
[www.jecoplastics.com](http://www.jecoplastics.com)

business partner of  
**HEIDELBERG**

**opc** OLIVER PÄTZOLD  
CONSULTING  
BANDEROLEN & MEHR

Phone: +49-(0) 2161-9028039  
[www.op-consulting.eu](http://www.op-consulting.eu)  
[info@opconsulting.eu](mailto:info@opconsulting.eu)  
[www.logistikpaletten.eu](http://www.logistikpaletten.eu)