

900 linear feet 8ft high WIPP® System  
January 2010

WIPP FLOOD BARRIERS  
Install \* Remove \* Repair \* Store

**Prepare area where WIPP will install to create a smooth surface clear of debris**



**Install a sheet of geo textile first then install WIPP on top of the protective membrane to protect WIPP from damage**





**WIPP can be manually unrolled**



**Next unfold the WIPP**





**Position into place and tighten all caps**



**With the first WIPP in place position next WIPP on top and unroll into position using the correct amount of overlap.  
8ft high WIPP requires 12ft of overlap.**





**Inflate the WIPP on top first holding the WIPP underneath in place**





**With the top WIPP fully inflated you can begin  
inflating the WIPP underneath**



**Both WIPP units fully inflated creating a seal against seepage**





**When inflating on an incline measure the height of the WIPP at the lowest point of gravity to ensure WIPP is not overinflated**

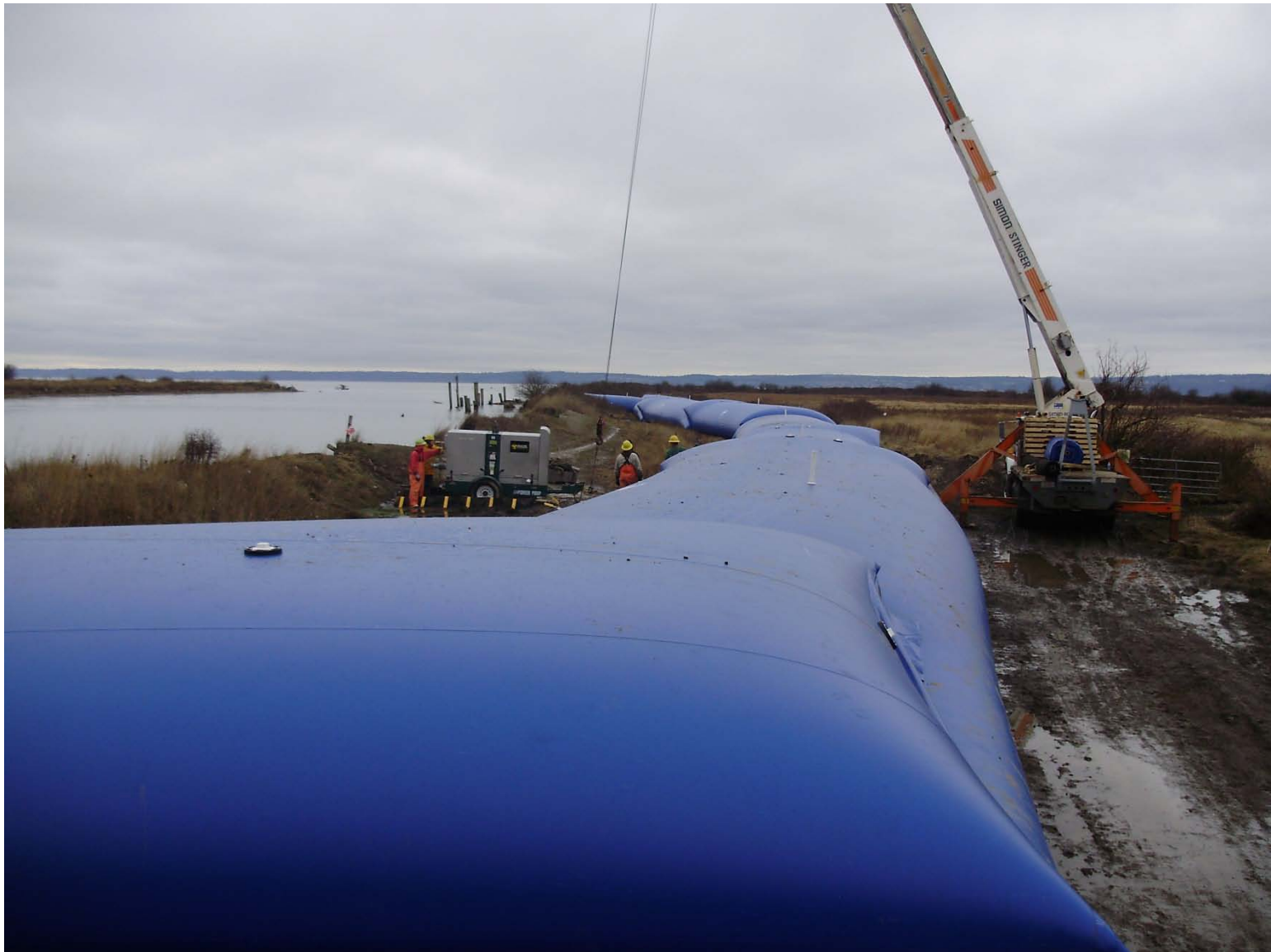


**Turn corners by overlapping at a 90 degree angle**





**Multiple WIPP units in place are ready to defend against rising water**



## **WIPP successfully controls water overtopping levee**





**The 8ft high WIPP controls up to 6ft of water**



**Property to the right of WIPP flood barriers remains dry**



For more information on WIPP® System  
Flood Barriers contact  
Hydrological Solutions, Inc.  
800/245-0199

[www.hydrologicalsolutions.com](http://www.hydrologicalsolutions.com)