



We preserve land along streams for flood control, clean water, and wildlife

Board of Directors

Chair

Lisa Lin

Vice Chair

Jonathan Lok

Treasurer

Ronda Risley

Secretary

Jacqueline Smolik

Board Members

Bill Bass

Dr. Matthew Berg

Johnny Dailey

Kelly Dietrich

Michael Nelson

Geoff Newton

Ryan Robol

Eric Schinsing

Brandon Tuck

Executive Director

Jill Boullion, PCED

First Name Last Name
Address
City, State Zip

Dear [Name],

Bayou Land Conservancy (BLC) is a nonprofit land trust that conserves land along streams for flood control, clean water, and wildlife. We have partnered with the City of Conroe to permanently protect the natural area west of the Briar Grove neighborhood with a conservation easement. A conservation easement is a voluntary agreement between a landowner and a land trust that restricts future uses of the land, such as development or subdivision.

We're reaching out because your residence is adjacent to this natural area, called the Stewart's Creek Preserve. While the City of Conroe remains the landowner, we wanted to introduce ourselves as the land's conservation partner. We're excited to preserve a portion of Stewart's Creek in perpetuity!

For the most part, you won't notice any changes to the land. A modest number of signs will be placed to demarcate the preserve boundaries. The conservation easement is compatible with forms of low-impact recreation, like hiking and biking, though it is ultimately the right of the City to permit any activities. Motorized vehicles are not allowed on the Stewart's Creek Preserve.

We hope you'll join us in our mission of long-term stewardship and protection for the land. We encourage you to visit our website, www.bayoulandconservancy.org, and sign up for our newsletter to stay plugged in with our events.

Happy Trails,

Suzanne Simpson, Land Stewardship Director

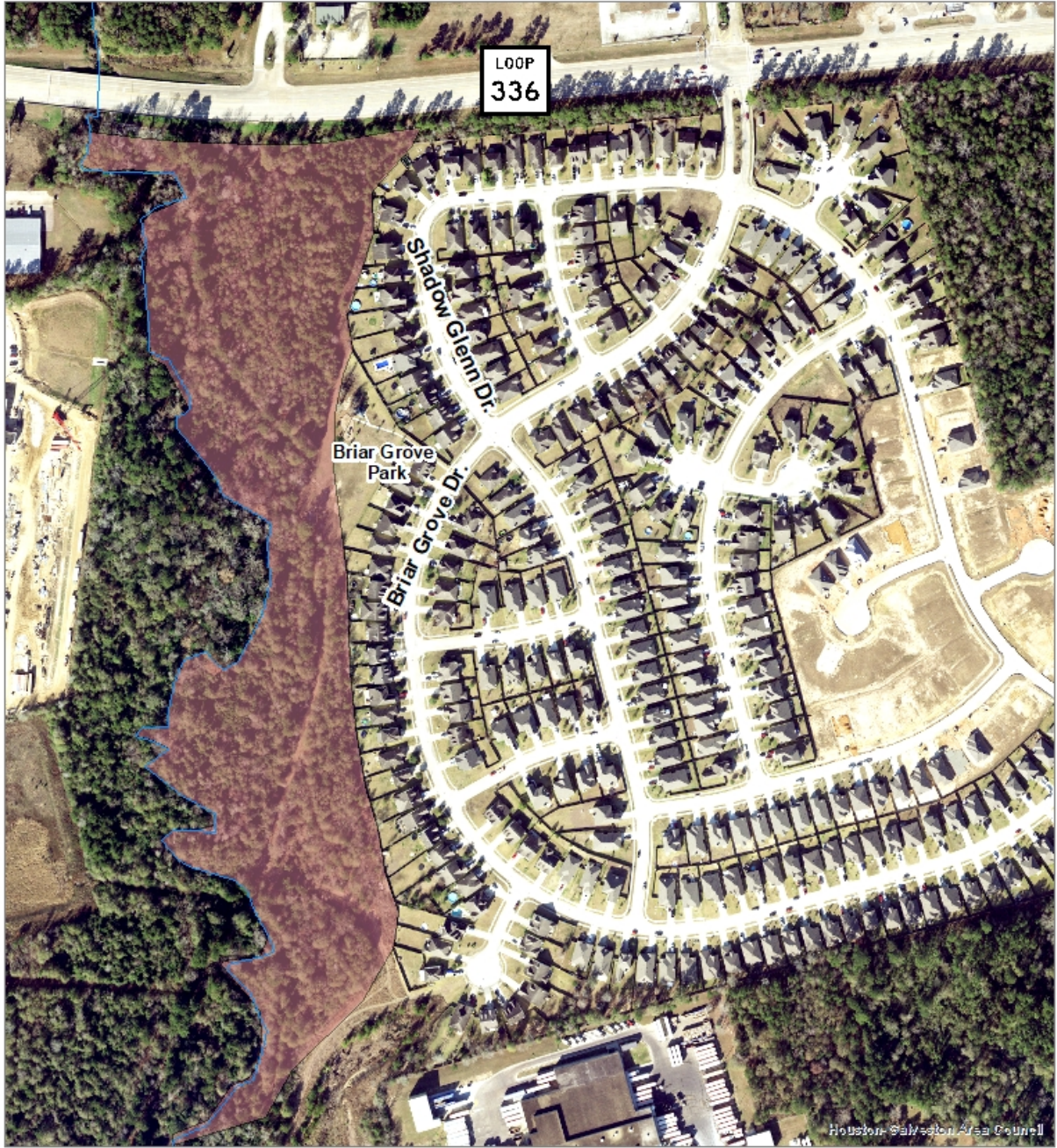


Conservation ♦ Preservation ♦ Education
10330 Lake Rd. Bldg. J | Houston, Texas 77070 | 281-576-1634
www.BayouLandConservancy.org

Proud member of:



Stewart's Creek Preserve
 South Tract - 20 Acres



Houston - Galveston Area Council

— Stewart's Creek and Tributaries
 ■ Stewart's Creek Preserve



Conservation • Preservation • Education		
Map Drawn By:	Suzanna Simpson	
Organization:	Bayou Land Conservancy	Coordinate System: NAD 1983
Date:	10/2/2019	