

# SAMANTHA POPE CREATIONS

## VOLUME 63 November 2015

Back in the day when I was 13 years old I started my textile art career by hand sewing my Barbies matching 3 piece outfits, multiple wedding dresses and more. Come 2014 I had progressed to making an actual life size wedding dress for the Festival of Quilts wearable art competition. Would you like to see the highlights of the intervening years? Well that is what my retrospective exhibition InVESTed in textile aims to do.

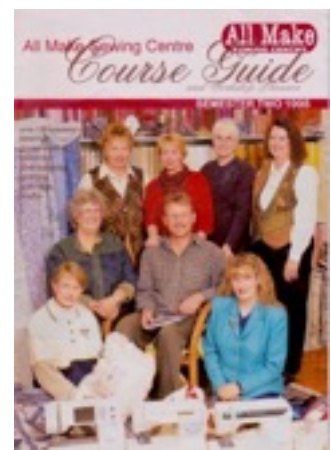
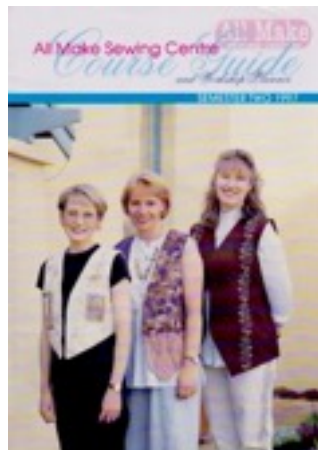
In 1993 I learned freehand machine embroidery at the national Pfaff seminar held in Sydney, my first time on an airplane and away from home interstate. Sharee Dawn Roberts, the American textile artist, taught a class on freehand machine embroidery and I was off on my future career path. I still have her book *Creative Machine Art*, autographed with the inscription "To Samantha, enjoy your creative spirit", she has no idea what that one workshop did for me.

Why InVESTed in Textile? Well when I worked at Allmake Sewing Centre I made a vest for just about every new technique I learned so consequently I seem to have a lot of them. I did wear them all back then in the mid to late 1990's as you can see from the covers of Allmakes workshop planners.

In 2006 I wrote my first article "Crystal Blue Wrap" (pictured below) for Jenny Haskins magazine *Creative Expressions* and launched my next career as a published artist.

More recently I have experimented with costumes and contemporary wearable art designs. Come see them all at the exhibition please.

Cheers Samantha



# SAMANTHA POPE CREATIONS

## EXHIBITIONS

**October 7 - November 15 2015** In My Garden, Murray Bridge Studio Gallery, Railway Tce Murray Bridge. [www.murraybridgestudiogallery.com](http://www.murraybridgestudiogallery.com)

**November 18 - December 20 2015** InVESTed in Textile a Retrospective Wearable Art exhibition by Samantha Pope.

Samantha Pope has been creating wearable textile art since 1990 when she started working at Adelaide Sewing Centre in Ascot Park.

This retrospective exhibition will display many of her early wearable art works which were mostly in the form of vests with freehand machine embroidery.

In later years Samantha experimented with needle felting and evolved more detailed textures incorporating beading and bobbin work.

In the last few years Samantha has created several intricate pieces for competitions and unique exhibitions and these will also be on display.

Murray Bridge Studio Gallery Open Wed - Fri 10:30 - 3:00 Sat 9:00 - 2:00 & Sun 11:00 - 3:00  
PH 0885 325 452

## EVENTS

**November 9th FAN** Marden collage goto [www.tafta.org.au](http://www.tafta.org.au) south Australian news for details.

**November 22nd** InVESTed in Textile exhibition opening at 2pm



## InVESTed in Textiles

a retrospective wearable art exhibition by Samantha Pope

Opening Sunday 22nd November 2015 - 2pm to 4pm

**18th November - 20th December 2015**

Murray Bridge Studio Gallery - 8 railway tce murray bridge - [www.murraybridgestudiogallery.com](http://www.murraybridgestudiogallery.com)