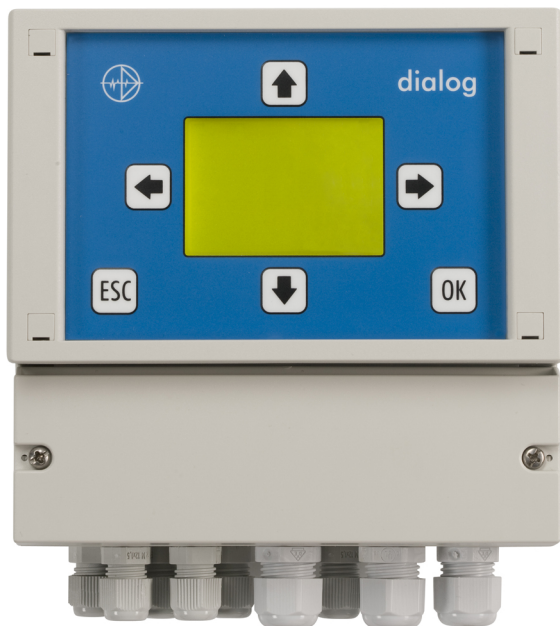


dialog W 2 CL2/PR R

Double-channel measuring and control instrument for free chlorine and pH-Value - additionally ORP optional

- Double measurement of free chlorine and pH -optionally with additional ORP measurement
- Easy and safe operation by plain text menu guidance
- Log book function
- Graphical trend display of the last 3 h



applications



Drinking Water / Beverages



Waste Water Treatment



Disinfection

description

The dialog W 2 CL2 PR R is a sophisticated instrument for the precise measurement and control of the chlorine concentration and the pH-value - additionally an ORP measurement is optional. It is available in a wall mounted housing.



dialog W 2 CL 2/PP R

Double-channel measuring and control instrument for free chlorine and pH-Value - additionally ORP optional

particular characteristics

- Variable assignment of relay and current outputs
- 2 limit values with delay
- Dosage check
- Semi-automatic two point-calibration for pH
- Slope and zero point monitoring for pH
- Automatic or manual pH-value compensation for pH
- Serial interface RS 485
- 2 or 3 scaleable, galvanically isolated 0/4 .. 20 mA outputs
- 2 separate PID-controller
- Real time clock
- Background illuminated two-line LC-Display
- Password function

information

Measuring and control instruments of the dialog series are also available for 117 VAC and 24 VDC (only wall mounted housing) - without additional charge.



dialog W 2 CL 2/PP R

Double-channel measuring and control instrument for free chlorine and pH-Value - additionally ORP optional

technical data

measuring parameter

free Chlorine	0 .. 4.00 mg/l 0 .. 20.00 mg/l
pH-value	0 .. 14.00 pH
ORP	-1500 .. +1500 mV

input characteristics

accuracy	1 % mg/L Cl ₂ of range, +/- 0,01 pH, +/- 1 mV
temperature measuring range	-30 .. +140°C
temperature coefficient	non-linear
conditions	min. flow 10 l/h recommended: 30 l/h pH-range 6.0 .. 8.0 pH

output characteristics

output signal	3 0/4 .. 20 mA (scaleable, galvanically isolated)
load	max. 500 Ohm
registration range	Free scaleable within the measuring range
voltage output	+/- 6 VDC for impedance converter
serial interface	RS 485 Baud rate 9600 data format 8 bit

power supply

line voltage	24 / 117 / 230 VAC, +6 / -10 %, 40 .. 60 Hz optional: 24 VDC
power consumption	10 VA

ambient conditions

ambient temperature	operation 0 .. +50°C, storage -20 .. +65°C
relative humidity	max. 90% rH at 40°C (non-condensing)
protection class	wall mounted housing IP 65

controller

control response	On/off controller (adjustable hysteresis) P/PI/PID-controller (pulse-pause, pulse-frequency or continuous controller output)
relays	3 relays, each with potential-free CO contact, max. 250 V, 6 A, 550 VA
onset delay	0 .. 200 sec till controller active
digital input	Controller stop via external contact



dialog W 2 CL2/PR R

Double-channel measuring and control instrument for free chlorine and pH-Value - additionally ORP optional

certificates and approvals

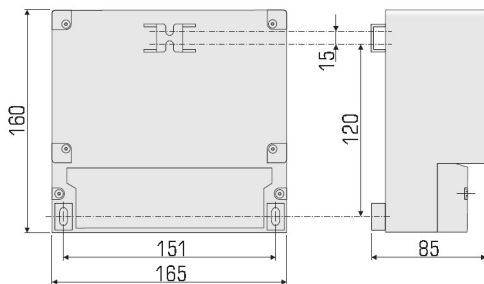
CE-symbol

Declaration of conformity: The product meets the requirements of the harmonized European standards. It thus complies with the legal requirements of the EC directives.

The manufacturer confirms successful testing of the product by affixing the CE symbol.

mechanical construction - wall mounted housing

material	ABS
dimensions	165x160x85 mm
weight	1.25 kg
connection	Spring-loaded terminals



order information

<u>name</u>	<u>description</u>	<u>article number</u>
dialog W 2 CL2/ PR R	wall mounted housing, 230 VAC, 0 .. 4 mg/l	115212K
dialog W 2 CL2/ PR R 20 mg	wall mounted housing, 230 VAC, 0 .. 20 mg/l	115230K



dialog W 2 CL 2/PP R

Double-channel measuring and control instrument for free chlorine and pH-Value - additionally ORP optional

accessories

accessories

CHECKIT Comparator

The CHECKIT Comparator is a compact handy colorimeter unit which is suitable for both mobile and static analysis work. CHECKIT Comparator is a colorimetric rapid test for easy determination of Free Chlorine, Total Chlorine, Chlorine Dioxide or Ozone concentrations that can be used as an indication measurement for our amperometric measuring systems. Naturally, regarding resolution and accuracy, the rapid test does not come close to the Krypton systems, and it cannot replace a photometric measurement. However, it provides a quick orientation and can therefore prove helpful during installation or routine comparison. The CHECKIT Comparator comes in a robust plastic casing with all necessary equipment.

PKV 30-DPS

Converter for PROFIBUS-DP for max. 32 instruments of the K 100 oder dialog series. Converting of RS 485 to PROFIBUS-DP interface, instrument in a housing for installation on a top hat rail, dimension 105 X 105 x 80 mm (HxBxT), connection cable inclusive

S-341 data logger

The bus data logger S-341 on the base of the RS-485 with Kuntze protocol reads, shows, and stores measuring data of up to 10 Kuntze instruments with up to 8 parameters each.

