

COLBY MINES

Zn-Pb-Ag Deposit



The Colby Zinc deposit lies within the Precambrian- Paleozoic Shuswap Metamorphic Complex, a belt of high grade metamorphic rocks. The rocks on the property have been divided into six metamorphic units and two intrusive units. The sequence of metamorphic units represents an originally conformable package of sedimentary rocks. In summary, the succession of metasedimentary rocks in the Colby (Kingfisher) area includes

biotite gneiss, quartzite and marble, and calcsilicate gneiss overlain by a thick marble layer. These units are overlain by biotite gneiss and associated calcsilicate gneiss, and then calcareous hornblende gneiss & amphibolite. The rocks are indicative of upper amphibolite and/or granulite facies of metamorphism.



GENERAL LOCATION MAP

The property is on a NW trending ridge between Kingfisher and Danforth creeks about 8 Km west of the north end of Mabel Lake, about 60 kilometres north-northeast of Vernon British Columbia, Canada.

The most significant amount of mineralization occurs in the Central Zone.



HAND TRENCHING THE CAMP ZONE ON THE COLBY MINES PROPERTY

The Colby Mines (Kingfisher) property has been classified as a

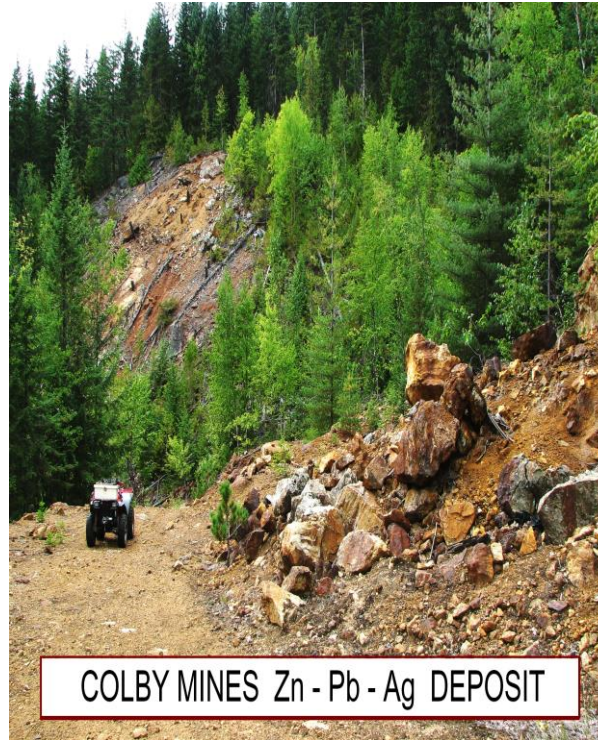
BROKEN HILL TYPE

Mineralization on the property occurs in six main areas. These are referred to as Dakota, Don, Central, Cominco, Mile 12, and Star 13 showings.

Sulphide mineralization consists of massive sphalerite and pyrrhotite with galena and pyrite. Pyrrhotite, and galena are also concentrated in quartzite breccia zones with sphalerite and in quartz-rich biotite gneiss, biotite quartzite, and calc-silicate gneiss. Sphalerite and pyrrhotite are disseminated in a tremolite-calcite marble. The marble is at least 300 metres thick and appears continuous over a strike length of at least 6 kilometres. Sulphide mineralization occurs within the marble unit near the centre of the claim group, and at both the northern and southern extensions.



COLBY MASSIVE SULPHIDES



COLBY MINES Zn - Pb - Ag DEPOSIT

Indicated reserves on the Colby Mines (Kingfisher) property are... 1.67 million tonnes grading 0.58 per cent lead and 2.6 per cent zinc.

(Statement of Material Facts 25/10/74, Colby Mines Limited).

The potential to increase reserves and grades are considered very good.

This property has excellent further discovery potential

This property is offered for sale by way of working option to purchase.

For further information please contact

Craig Lynes:

Rich River Exploration Ltd.



PO BOX 183, GRINDROD BC

V0E-1Y0

Phone (250)-804-6189

(250)-833-2203

Email:

prospect@richriver.bc.ca

Web:

www.richriver.bc.ca