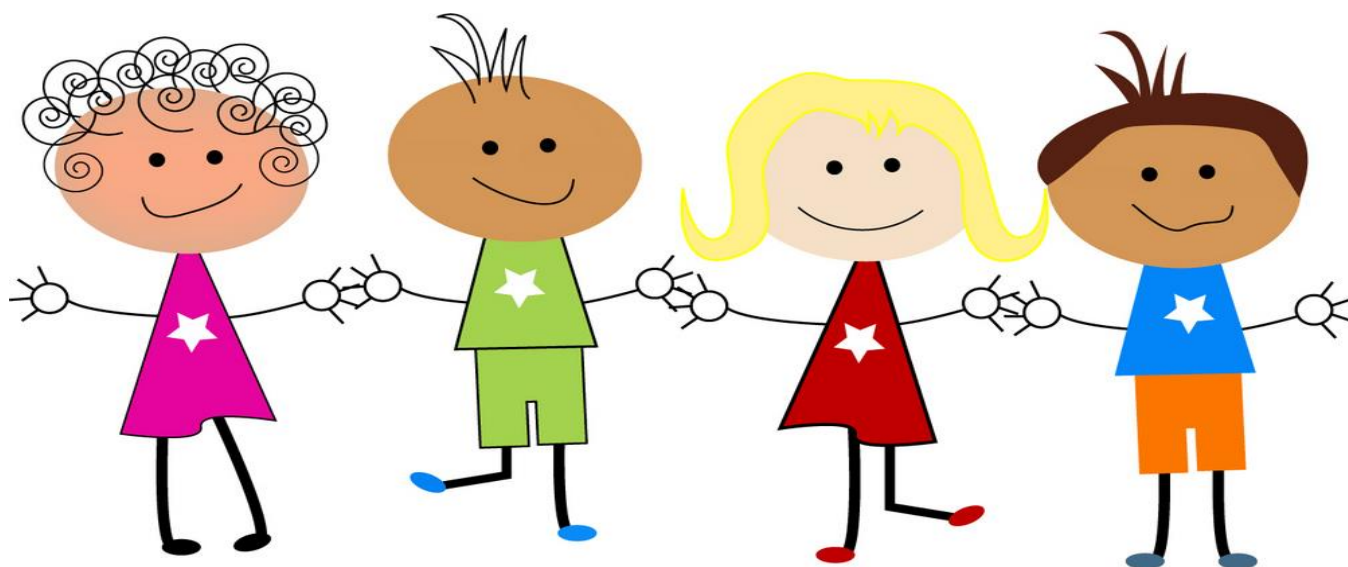


Sylvan Lake School Age Care Society

Parent Handbook



Licensed and Accredited
Reviewed & Revised January 26, 2018

Welcome to the Sylvan Lake School Age Care Society (SLSACS)

We pride ourselves in providing a fun and exciting environment for children.

Philosophy:

SLSACS strives to offer children a home away from home where they can feel supported, safe, and connected.

The program offers children an environment in which they can develop new skills, learn through play and interactions with peers and adults, and exercise their unique interests and abilities.

Kidz club is staffed with professionals who are dedicated in providing proficient care through play engagement, positive role modeling, patience, and understanding. Staff support children in their growth and provide opportunities for them to celebrate their uniqueness and achievements.

Mission Statement:

To provide a professional high standard of care to children in a supportive, enjoyable, and inclusive environment.

Includes ALL “walks of life”:

SLSACS does not discriminate based on age, sex, gender identity, culture, ethnicity, ability, religion, race, status, views, or interests. Kidz club will be a safe place for everyone and promote complete acceptance.



Objectives and Goals:

The Sylvan Lake School Aged Care Society was formed in August 2004. The Societies objective is to enhance the lives of children and families in our community by providing quality School Age Care Programs for working parents in Sylvan Lake. The following information will describe the program and the intent to provide kind and professional care for children 4.5 to 12 years old (13th birthday), encompassing grades K to 6. Our goal is to have a program of children and caring, enthusiastic staff. Serving the family as a whole is instrumental in childhood development.

Operating Procedures:

Beacon Kidz Club	7:00 AM to 8:35 AM and 3:00 PM to 6:00 PM on school days.
Steffie Woima Kidz Club	
CP Blakely Kidz Club	
Our Lady of the Rosary Kidz Club	7:00 AM to 8:25 am (Monday to Friday), from 1:50 PM to 6:00 PM (Mondays) and from 3:00 PM to 6:00 pm (Tuesday to Friday).
Holidays – Compressed Days include Christmas break, Easter break, teachers convention and summer holidays.	Well planned and facilitated daily programs will be available 7:00 AM to 6:00 PM
<p>On Non Compressed Days (Christmas Break/Winter Week / Spring Break, etc.) there will be a charge of \$30/DAY – Based on a <u>minimum</u> of 8 Children. - Please note that Compressed Days are made available for regularly attending Kidz Club children first and subject to availability. Paid Non-Compressed Days must be booked and paid in advance, and two weeks written notice must be given to cancel any pre-booked days. If under two weeks’ notice is given, those days will be non-refundable.</p> <p style="text-align: center;">On Statutory holidays the program will be closed.</p>	

“THE ONLY WAY TO DO GREAT WORK, IS LOVE WHAT YOU DO” – STEVE JOBS

Program Activities

Arts and Crafts: Creative expression will be continually fostered and encouraged.

Literacy: Books are provided at each program that reflect the children's interests.

Dramatic Play: Costumes and play props are available for children to engage in dramatic play, roles, culture, imagination fostering.

Manipulative Play: Blocks, Legos, building items are provided for children to engage in construction, role play, creative expression.

Each program will offer activities that foster – Social, creative, intellectual, physical, and emotion developmental needs.

Social: Children are provided with opportunities to develop social skills through interactions with peers and adults. Being part of a group and learning appropriate social behaviors is encouraged and fostered within Kidz club.

Creative: Kidz club provides many opportunities for children to express themselves creatively and experience chances to produce new ideas. Creative expression, creative problem solving, invention, experimentation are awesome ways to support children.

Intellectual: Chances for children to explore, discover, observe, and understand will foster their intellectual growth. They will have support in developing language skills.

Emotional: Every child will be accepted and treated fairly. They will be shown respect and supported within their own process of learning love and respect.

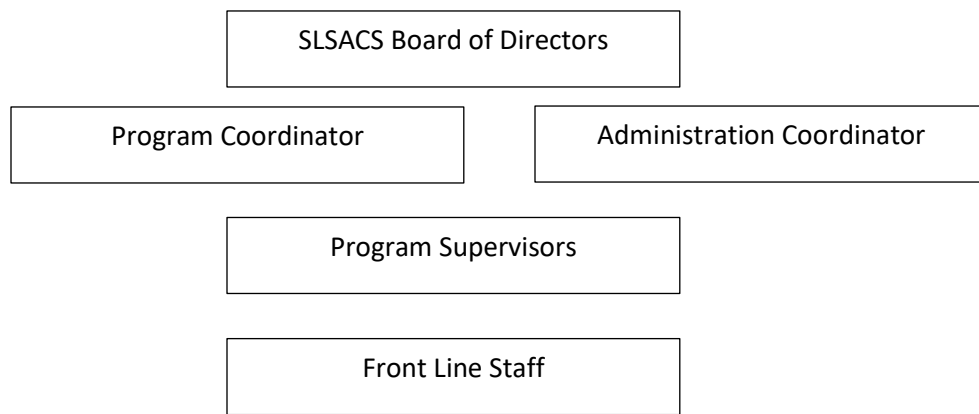
Physical: Physical skills are fostered and needs are met through play, games, nutrition, and education.



Roles and Responsibilities

SLSACS encourages parents to join the Board of Directors and attend monthly Board meetings.

SLSACS wants to continue to offer quality care to children and families and takes pride in having passionate staff members working together to achieve this goal. Building meaningful relationship with children and their families is important to this process. Empowering children through programming and play will be an on-going process offered by the staff.



+

SLSACS wants to ensure that parents, children and staff understand each voice is important, working together is the overall goal of quality child care and is a group effort.

"Its amazing what we can accomplish when we are in it together"

SITE TOURS

Beacon Hill

403-877-9029

23 Bowman Cir, Sylvan Lake

We are privileged to have our very own classroom at Beacon Hill. The kids and staff enjoy having their own space to decorate and the positive aspects of classroom environment. The program is able to utilize the playground located east of the school as well as the play field and gymnasium. As you enter Beacon Kidz Club you will quickly recognize the milieu that truly was built through the creativeness of children.

Steffie Woima

403-887-4044

4720 45 Ave, Sylvan Lake

This program runs out of the Steffie Woima gymnasium. The school also offers space within their library for the program to utilize which provides a change in dynamics and new play opportunity. Take down set up style programming takes place during the week days. Steffie has two beautiful playground areas in the back of the school for the program to utilize with a large field space which offers natural setting play opportunities.

Our Lady of the Rosary

403-396-5086

4520 Ryders Ridge Blvd, Sylvan Lake

This program runs out of the gymnasium. Take down set up style programming. OLR has a playground and basketball courts outside for the children to utilize. As they do not allow any food or beverage within the gym, the program uses the common area for snack and movie time. Board meetings and staff meetings are also hosted at this school at times.

CP Blakely

403-887-4062

4815 43 St, Sylvan Lake

This program runs out of the gym with take down set up style programming. They have two different playgrounds at the school the children can utilize. Most compressed days and summer days take place at CP. At times board meetings take place at this school in one of the classrooms. CP has also hosted our fundraiser events in the past.

SLSACS Board of Directors,
Program Coordinator, Administration Coordinator, Supervisors and
Staff would like to welcome you to the Kidz Club.

The club wants to ensure that your child and family feel welcomed
into an inclusive community.

Please let us know what the program can do to support you in the
journey of this Kidz Club Adventure.

WELCOME TO KIDZ CLUB

Program Coordinator: slsacsdirector@live.ca
403-877-9056

Program Administration: slsacsdirector@live.ca
403-844-5918