

# Why take pictures

Here are the reasons for photography in dentistry

H

- Record or health and disease
- Patient education tool
- Visual communication of dental conditions
- Support for narratives submission and billing
- Baseline and a way for future comparison
- Xrays often do not show what we see

# Health vs disease

- ▣ Arch pictures show a snapshot of what is normal and what may not be

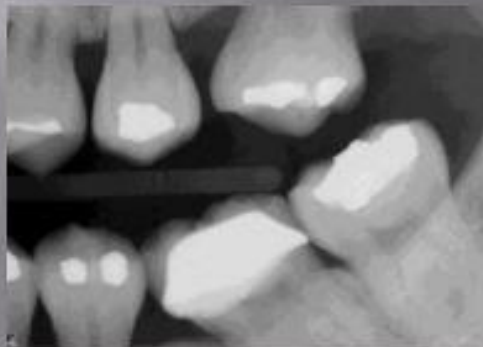
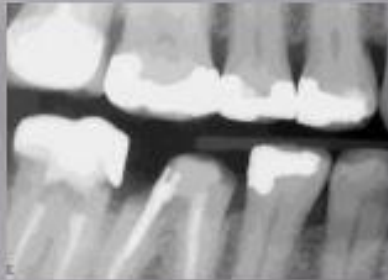


- ▣ Taken once per year and always at initial visit

# Supporting documentation

- ▣ Photos create supporting documentation for medical necessity of treatment which may not be obvious in xrays
- ▣ Main reasons for indirect restorations: crowns
  - Incomplete fracture of cusps
  - Complete fracture of cusps
  - Missing cusps
  - Previous root canal treatment
  - Isthmus of restoration is more than  $1/3$
  - Contact area is too large for direct restoration
  - Periodontal condition inhibits direct restoration

# Incomplete Fractures of the Clinical Crown



#18 on the radiograph doesn't need anything but check out the lingual. The insurance claim examiner will certainly deny this claim without this intra-oral picture.

# Cuspal defects



Vertical incomplete fracture of a cusp  
and recurrent buccal decay of distobuccal cusp



Missing distobuccal cusp overlaid with  
failing amalgam

# Recession is bone loss

- ▣ Recession is a sign of bruxism and leads to abfraction lesions
  - Treatment may include restoration of recession, grafting of recession, crown coverage if cusp is undermined followed by nightguard appliance
  - Pictures allow a record of progression
  - Side view from a frontal shot is best



# Incisal Wear



Incisal wear may be an indication for night appliance as well as incisal restorations

# Broken Crowns and crown margins

- ❑ Broken porcelain is not visible on radiographs
- ❑ Crown margins on the buccal are not visible on radiographs if there is recurrent decay





# General Rules

- ▣ Anytime we treatment plan crowns we need pictures
- ▣ Anytime there is pathology we need pictures
- ▣ Any abnormality TAKE A PICTURE