

ALWAYS
FREE

The Antiques ★ **TOURIST** ★

DEVON | SOMERSET | DORSET

2020 EDITION

YOUR ESSENTIAL GUIDE TO:

ANTIQUES
RECLAMATION
VINTAGE
RETRO



The Antiques Tourist is promoted by Antiques Bazaar

THE OLD TEXTILE MILL | SOUTH STREET | CREWKERNE | TA18 8AG

Telephone: 01460 77121

WWW.THEANTIQUESTOURIST.COM



The Antique Village

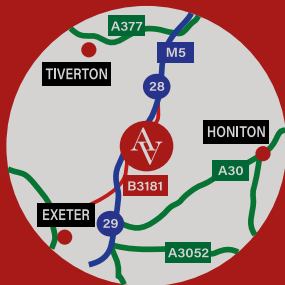
Monday to Saturday 10am – 4pm

Multi-Dealer Antique Centre
ANTIQUES ~ VINTAGE ~ SALVAGE
Exeter 8 Miles



...the finest joint in town...

- ~ 50 seat café plus outside seating
- ~ Serving specialty coffee, teas and cakes
- ~ Panini light lunches & snacks
- ~ Locally sourced and served with a smile



- ~ The Antique Village, Hele, EX5 4PW
- ~ On the B3181 Cullompton – Pinhoe
- ~ Pinhoe Train Station — 6 Miles
- ~ Exeter Airport — 7 Miles

www.theantiquevillage.co.uk ~ +44 (0) 207 1833 511

Believer Forest, Dartmoor

Welcome to the 2020 **Antiques Tourist** for Devon, Somerset and Dorset



Spending time over the past two months preparing this 2020 edition, inevitably we end up chatting to colleagues in the trade. The consensus seems to be that 2019 was a very 'mixed bag'. As we all know the past ten years have seen a complete re-write of our values, expectations and bench-marks.

Out with traditional brown furniture, in with painted and shabby-chic. Out with china, copper and brass, in with West German pottery, vinyl, pop, decorative pieces and mid-century furniture.

As usual 'the trade' are resilient and it is refreshing to see how many businesses have re-invented themselves, not just to survive, but thrive! We have a good selection of

new-comers to the trade and success stories highlighting businesses moving and expanding.

I hope you like our take on 'pop-art' on page 32.

So please enjoy this latest edition of The Antiques Tourist and keep a copy in your business vehicle for easy reference.

Anthony Bucke, Editor.
Friday 28 February 2020
Email: hello@theantiquetourist.com

The Antiques Tourist, The Old Textile Mill,
South Street, Crewkerne, TA18 8AG
www.theantiquetourist.com

Disclaimer

Disclaimer: Whilst every effort is made to ensure accuracy, we do not accept any liability for losses resulting from information in this publication. We apologise if you find anything is inaccurate, misleading or out of date. Information, data, maps, and opinions published here are provided in good faith by advertisers and contributors, but are intended for guidance only, and do not form any part of a legal contract.

Copyright: No part of this publication may be copied or reproduced without prior written consent of the Editor. Please send in any feedback, as it may well be useful for future publication.

DEVON 4

SOMERSET 23

AREA MAP 28

DORSET 41

TIME FOR A TRIP AROUND THE COUNTY OF DEVON



Cairn commemorating Sir John William Fortescue, Exmoor

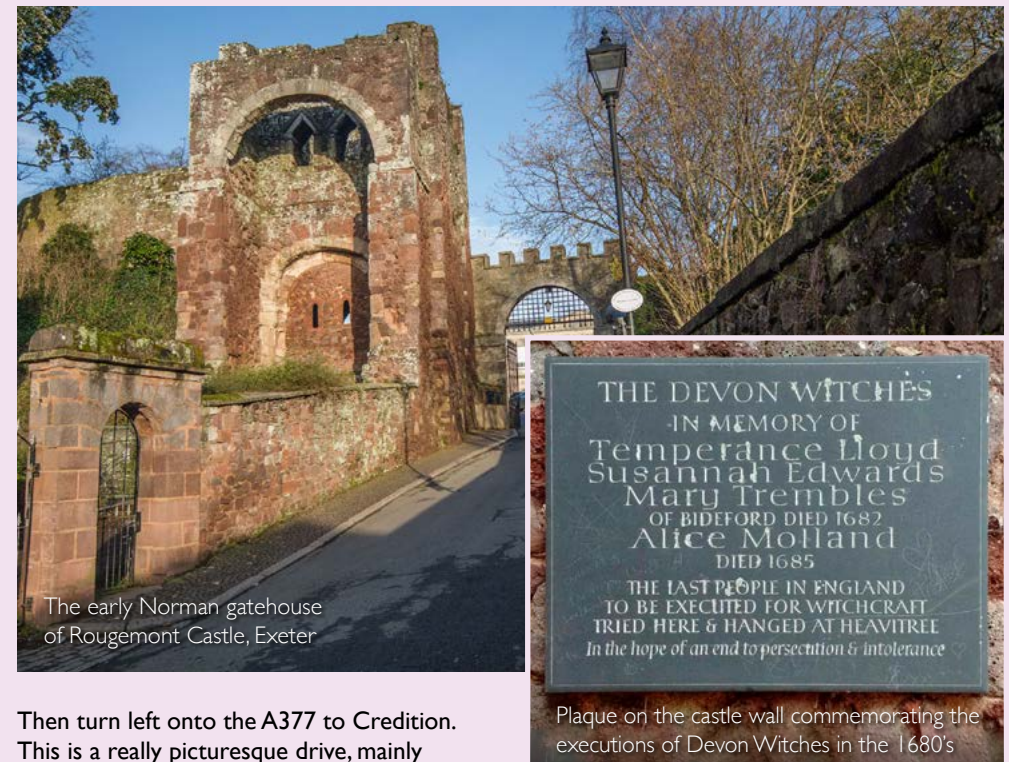
Famous for Exmoor, Dartmoor, cream teas and sandy beaches - Devon is one of the largest counties in England, so it is little surprise that there are so many interesting stop-offs for antiques, vintage, retro and reclamation!

We start on the busy M5 southbound at Junction 28. Exit here and go through Cullompton, south on B3181, which runs parallel to M5. After about 3 miles, turn right to Hele and immediately you will find **The Antique Village** on a large site, which includes an old cider factory. This used to be Fagins Antiques. Under new ownership, now a *work-in-progress* - recent additions are a café and a number of independent antiques, vintage and reclamation businesses. More to follow as the project evolves.

Retrace your steps to Cullompton and then follow signs to Tiverton. Here you will find **Flora's Attic** on Newport Street, inside an interesting bookshop. Next stop South Molton, via the A361, North Devon

Linkroad. The *Gateway to Exmoor* - as South Molton describes itself, is host to various antiques, vintage and reclamation businesses. **Approximate Odds, Crown and Cotton, Source for The Goose and The Pannier Market** are all in East Street. Then **Treasured Things** (plus tearoom) in South Street and **Browns Reclamation** (plus vintage double-decker bus) on the road westwards back to the A361.

Retrace your steps into South Molton and turn onto the B3227 to Chittlehampton and Umberleigh. At the bridge in Umberleigh, you will find a very atmospheric warehouse, home to **Murch's Emporium**. If you have time there are some enjoyable riverside walks here.



The early Norman gatehouse of Rougemont Castle, Exeter

Then turn left onto the A377 to Cridition. This is a really picturesque drive, mainly beside the fast-flowing River Taw. On Cridition high street you will find **Cridition Antiques Centre** - easy parking in the high street.

Depending upon your timetable, this might be the opportunity for an overnight stop.

A short journey south brings you into the county town and city of Exeter. Where to visit first? There is much history in Exeter, including Rougemont Castle, the underground passageways, the catacombs and bombed out church. As a university city the cafes and restaurants are also very appealing. Or maybe just antiques? First off try **Exeter Antiques** on the Quay - site of filming the 1970's TV epic *The Onedin Line*. Then cross the River Exe onto Marsh Barton Industrial Estate for **Vintage Trading Post** and **The Attic**. Both are worth exploring. Check out the dates for **Exeter and Matford Antiques Fairs** held at the

Plaque on the castle wall commemorating the executions of Devon Witches in the 1680's

Cattle Market, which you will pass heading towards the ringroad and Exminster, where you will find **Tobys Reclamation**. Retrace your steps to the ringroad, to re-cross the River Exe northwards and at Countess Weir Roundabout, turn right to Topsham. **Mere Antiques** are in Fore Street, Topsham and **Topsham Antiques Centre** is on the quay.

Now back to M5 for a south-westward journey along the A38 to Ashburton. This is another moorland *gateway* town - this time onto Dartmoor. **Ashburton Antiques Trail** guides you around the wonderful selection of over 10 antique shops in this picturesque moorland town. Naturally there is a good choice of venues here for refreshment too.

This may again be an opportune moment to stay the night, and start refreshed tomorrow.

Up for another adventure? Follow the B3357 across Dartmoor through Poundsgate, Dartmeet, Two Bridges and Merrivale to Tavistock and **The Pannier Market**. Tuesdays and Saturdays are best for antiques, although the pannier market is open every day Tuesday - Saturday.

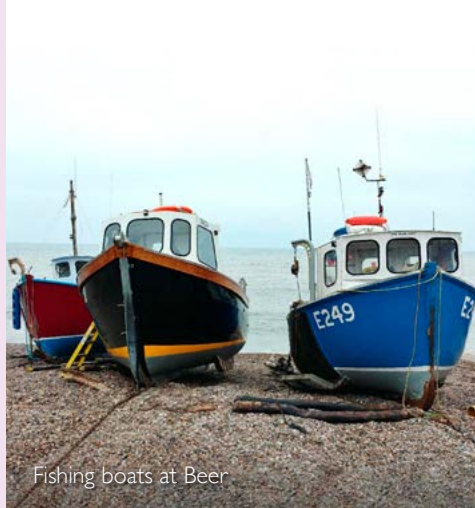
Now for a more urban drive, head south to the A38 at Plymouth, then eastwards to South Brent, home to **Occleshaw Antiques** and **Gildersleve Antiques**. South Brent is a quiet haven off the A38 South Devon Expressway. You then have a choice of routes south to Kingsbridge and **Kingsbridge Antiques Centre**, before a fairly spectacular coastal drive to Dartmouth and **M&H Antiques**. Take a ferry to cross the River Dart to Brixham and find **Decades Past** recently opened at 52 Middle Street, Brixham. Another new business is **Audacious Antiques** at 176 Union Street, Torquay.

Then head north to Newton Abbott, for **Decades of Antiques** in Olympic Business Park, Kingsteigton Road.

From Newton Abbott follow signs for A38 and M5 northbound and then exit the M5 onto A30 eastbound, leaving A30 at Exeter Airport. Head towards the airport terminal, turning left through the busy airport entrance and continue past The Hilton Hotel to The Antiques Complex, where you will find **Carradale Farm Antiques** and **McBains Antiques Centre**. These may take some time!

(Later) take your route back onto A30 and head east for Ottery St Mary and **Kirstens Curiosities** in Mill Street (one way street). Then head for Sidmouth, where you will find **Sidmouth Antiques Centre** in All Saints Road.

Another picturesque coastal road takes you eastwards from Sidmouth to Beer and



Dolphin Antiques Centre to the rear of the Dolphin Hotel. Don't miss the beach at Beer, with local fishing boats at rest. Return to the A3052 mainroad and into Seaton, where **Bramblewood and Thickett** have their antiques and interiors shop in Queen Street. Then head north to Colyton, a famous rebel stronghold in The English Civil War. Here in Station Yard you will find **The Vintage Shed**.

Then inland to Axminster and **The Old Chapel Antiques** in Castle Street.

The Axe Vale Festival with an antiques marquee, will be held in Axminster this year on Saturday 20th and Sunday 21st June.

Your last town on this epic tour of Devon is Honiton. Here **Atburys** have vintage signs and models at Hermitage Antiques. At the west end of the high street is the very popular **Fountain Antiques Centre**.

If you have stuck with us thus far, another overnight stop is almost certainly overdue.

As they say on BBC's Celebrity Antiques Road Trip "nighty - nighty".

Editor's note: Please check out individual opening times, because this route is based on the interesting and appropriate geographical links, not trading times and trading hours, which will vary from venue to venue.

CREDITON ANTIQUES CENTRE

124 High Street Crediton Devon EX17 3LQ



Set in the heart of the High Street, Crediton Antiques Centre offers over 60 cabinets with different dealers selling a wide range of Collectables, Ceramics, Glass, Gold & Silver, Militaria, Small Furniture, Jewellery, Kitchenware, Oriental, Books, Railway & Transport, Toys, Signage, Gifts & lots more!

Follow us on Facebook

10am to 4pm Monday to Friday, 10am to 3pm Saturday.
Closed Sunday and Bank Holidays.

Tel: 01363 777779 Email: ayeshagodfrey2@aol.co.uk
www.salvagefairs.com

Flora's Attic

VINTAGE TREASURES



01884 254488
florasatticiverton@gmail.com

Open Monday – Saturday
 Closed Wednesdays

In Heartland Old Books
 12 Newport Street, Tiverton,
 Devon EX16 6NL

Treasured Things



Furniture, Decorative
 Homewares & Coffee Shop

Like & Follow us @TreasuredThings15



Tel: 07429 246 572

@ApproximateOdds

Open: Tuesday to Saturday,
 10am until 5pm

103 East Street | South Molton | EX36 3DF

Source for the Goose

Inviting you to browse an ever-changing range
 of vintage painted and unpainted furniture
 and delightful home accessories

Opening Hours

Monday to Saturday 10am to 4pm



01769 579483

jill@sourceforthegoose.com

www.sourceforthegoose.com

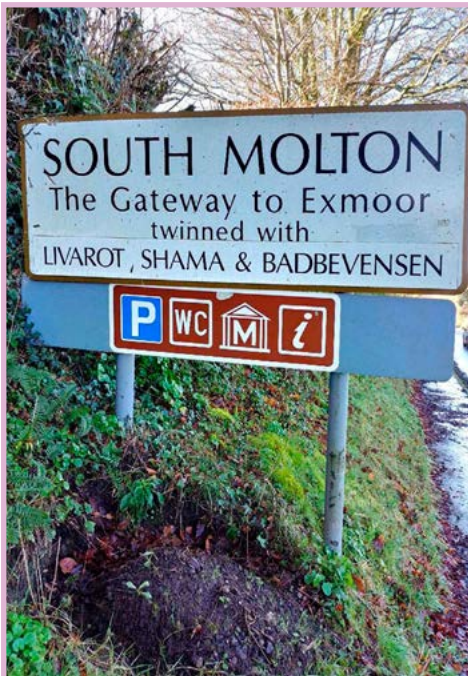
facebook.com/sourcegoose

twitter.com/sourcegoose

instagram.com/source_for_the_goose



5 East Street, South Molton, Devon EX36 3BU



Brown's

Antiques & Reclamation

- Antique Furniture • Garden Antiques •
- 400+ Doors & 100+ Fireplaces •
- Building Materials & Sanitaryware •
- Decorative & Collectables •

OPEN 7 DAYS A WEEK



Telephone: 01769 579997
 Aller Cross, South Molton. EX36 3RD
www.brownsantiquesandreclamation.co.uk

CROWN + COTTON

COFFEE + BOTANICALS + LIFESTYLE SHOP
 6 EAST STREET | SOUTH MOLTON | DEVON



INDULGE IN FRESH FOOD + GET LOST
 IN OUR LITTLE JUNGLE!

Plants + Coffee + Tea + Milkshakes
 Iced Drinks + Cake + Pastries + Sandwiches
 Homewares + Floristry Services

Like and follow us on @CrownandCotton

South Molton Pannier Market

Thursdays and Saturdays 8.30am – 1.30pm all year
 5 Broad Street, EX36 3AB • 01769 572252

South Molton Pannier Market and Events



SOUTH MOLTON FLEA MARKET

70 Assorted Stalls Every Month

Unusual, interesting and unique!

South Molton Flea Market

TEL: 01392-494-927

16 MARSH GREEN ROAD
MARSH BARTON
EXETER, EX2 8PQ

f LIKE & FOLLOW US
@TheVintageTradingPost



8,500 sq ft of Space to Browse ★ 70 Specialist Traders ★ Easy Parking
Friendly & Knowledgeable Staff ★ Relaxed Atmosphere

OPEN 7 DAYS A WEEK 10AM - 5PM • SUNDAY 10:30AM - 4PM

WE SELL A HUGE VARIETY OF DECORATIVE & FUNCTIONAL ITEMS INCLUDING:

VINTAGE ★ MILITARIA ★ BROCANTE ★ ANTIQUES ★ RETRO ★ RECLAMATION ★ LIGHTING
JEWELLERY ★ KITCHENALIA ★ RECORDS ★ ART ★ INDUSTRIAL ★ FURNITURE ★ CLOTHING

Frenchchic Chalk Paints & Decorating Materials *ALWAYS IN STOCK*

**DECOR FOR UNIQUE & ECLECTIC TASTES...
SOMETHING FOR EVERYONE!**

Refreshments Available, Tea, Coffee & Soft Drinks!

◆ **SEE YOU THERE!** ◆

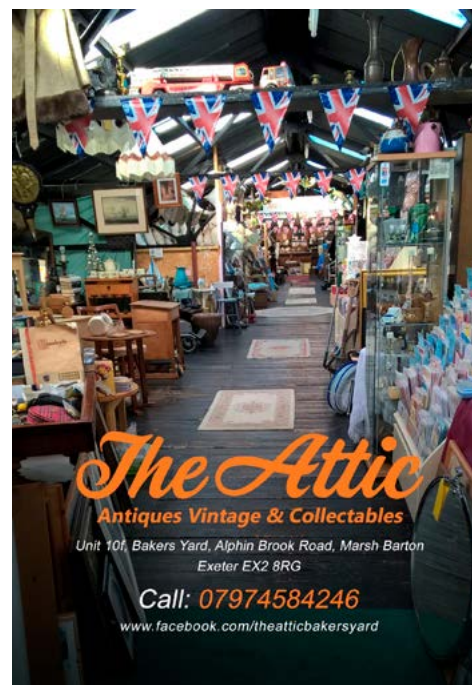
Murch's ANTIQUE EMPORIUM

An extensive Antiques
Warehouse of Bric-a-brac,
Collectables & Furniture

Open to all in a lovely
riverside setting

The Bridge, Umberleigh. EX37 9AA

Telephone: 01769 560522



The Attic
Antiques Vintage & Collectables

Unit 10f, Bakers Yard, Alphin Brook Road, Marsh Barton
Exeter EX2 8RG

Call: 07974584246

www.facebook.com/theatticbakersyard

EXETER
Matford
Antiques &
Collectors Fair



MATFORD PARK ROAD,
MARSH BARTON TRADING ESTATE, EXETER EX2 8FD

SATURDAYS 2020

February 22nd | April 25th | July 25th

October 10th | December 5th

100's of Stands - Inside and Out
Restaurant & Free Parking



@exetermatford



@EMatford



exetermatford

Trade: 9.00am – 10.00am £5
Public: 10.00am – 4.00pm £4
(Last Admission 3.30pm)

Bookings & Enq.: 01278 784 912

www.exetermatfordfair.co.uk

Exeter's Antiques Centre and The Riverside Café



Browse our eclectic mix of antiques & collectables
Enjoy a coffee, brunch, lunch or afternoon tea

Open every day 10am – 5pm

The Quay, Exeter. EX2 4AP



01392 493501 | www.exeterquayantiques.co.uk

RECLAIMED AND BESPOKE INTERIORS, EXTERIORS, ANTIQUES AND ODDITIES



The Old Builders Yard & Store
TOBYS
Reclamation
Est. 1985

- Antique, Reclaimed & Bespoke Furniture
- Freestanding Kitchens
- Reclaimed Doors
- Building Materials
- Garden Ornaments
- Slate, Bricks & Stone
- Scaff Planks & Timber
- Fireplaces
- Paints & Waxes
- Bathrooms
- Ironmongery
- and much more!

WWW.TOBYSRECLAMATION.COM

Station Road • Exminster • Devon • EX6 8DZ • 01392 833499 • sales@tobysreclamation.com

**Topsham Quay
Antiques Centre**



Come & visit us!
Thousands of Antique, Vintage & Retro items.
65 traders, 3 floors, historic warehouse.
Open 7 days every week: 10:00 to 16:45
01392 874006
The Quay, Topsham, Devon EX3 0JB



www.quayantiques.com 

NEWTON ABBOT'S

Decades of Antiques

An eclectic mix over two floors
Lots of treasures waiting to be found
Visit us in-store or online
www.decadesofantiques.co.uk

20, Olympus Business Park,
Kingsteignton Road,
Newton Abbot, TQ12 2SN
OPEN Tue-Fri 10am-4pm
FREE CAR PARK

We Sell, Buy & Exchange
Quality Antiques
Single items to a full house clearance
Tel: 07858235716

**mere
antiques**
Topsham Devon
01392 879569
info@mereantiques.com

Marilyn & Bob Reed have been trading as **mere antiques** since 1985 and have had the shop in Topsham since November 1995.

Topsham is a delightful small town, heavy with Dutch influence and was the main port of Exeter in the 19th century.

There is easy access from the M5 motorway.

mere antiques are open from Monday to Saturday, 10am until 5pm. Out-of-office hours are available by appointment, please call 07870 206299.



Worcester Blue & White Chestnut Basket



Arts & Crafts Indian Carved Elephant




19th Century Cantonese Vases



Black Forest Bear Blotter (1910)

www.mereantiques.com

 **AUDACIOUS
ANTIQUES**


176 Union Street, Torquay, TQ2 5QP

*Antiques And Collectables, Bought and Sold
From Single Items to Full House Clearance*

An Aladdin's Cave of:
Furniture, Jewellery, Porcelain, Glass, Coins, Artworks,
Ceramics, Silver, Gold, Matchbox, Militaria,
Paperweights, Dolls, Collectables and Much More.

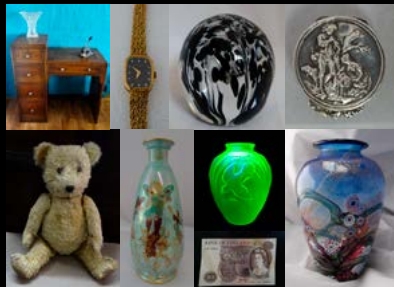
New Treasures Every Day.

www.audaciousantiques.epizy.com
@: audaciousantiques1@gmail.com
Tel: 07397 576 713



Decades Past

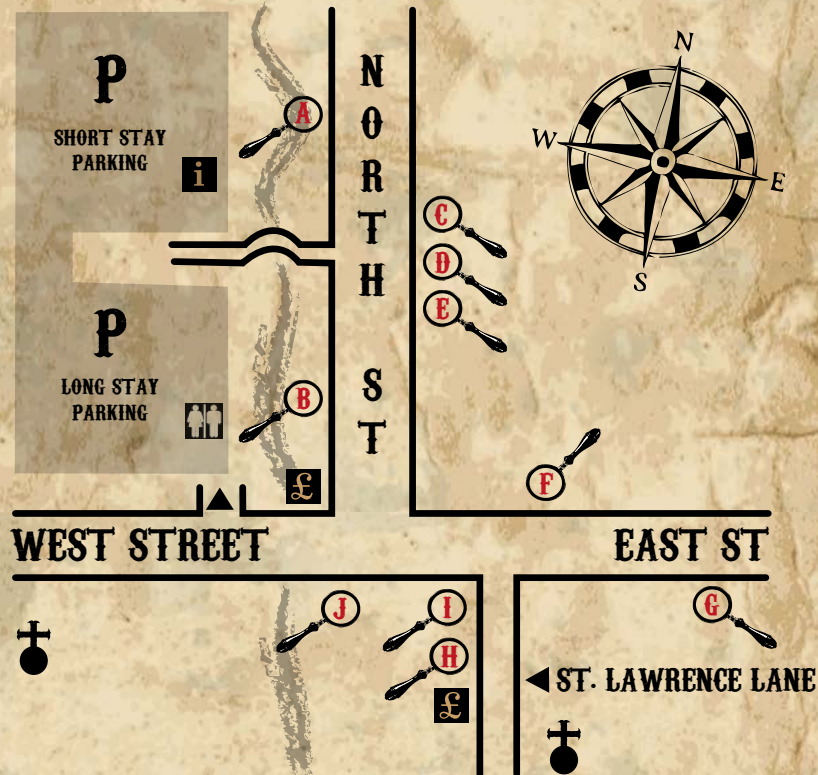
52 Middle Street,
Brixham, TQ5 8EJ
Tel: 01803368155 / 07858235716
decadespast@outlook.com



A Treasure Trove of Antiques & Collectables
OPEN Wed-Sun 10am-4pm
Antiques bought sold & exchanged

ASHBURTON ANTIQUES TRAIL

With over 10 antique shops to explore, ample parking and lots of places to eat and drink, Ashburton is a great place to find a hidden gem.



For more information please visit:

WWW.ASHBURTONANTIQUESTRAIL.CO.UK

MEMBERS

- A THE GLOBE**
15 North Street, TQ13 7QH
- B IN A NUTSHELL ANTIQUES**
7 North Street. TQ13 7QJ
- C CATHERINE WATERS**
22 North Street, TQ13 7QD
- D ODDS & SUDS**
20 North Street, TQ13 7QD
- E THE EMPORIUM**
18 North Street, TQ13 7QD
- F EAST STREET GALLERY**
13 East Street, TQ13 7AD
- G ALCHEMY ANTIQUES**
22 East Street, TQ13 7AZ
- H RUST AND THE WOLF**
2a St Lawrence Lane,
TQ13 7DD
- I EAST STREET ANTIQUES**
8 East Street, TQ13 7AA
- J FRANKLIN & HARE**
2 East Street, TQ13 7AD

OCCLESHAW ANTIQUES



We sell good quality furniture, Georgian Country mainly, metalware, pottery, ceramics, silver and many more items. We also buy good quality items.

We have a Ceramic Pottery restoration workshop on site.

Shop: 01364 73105 Mobile: 075300 52445

Open: Thur 10am - 5pm, Fri 10am - 5pm, Sat 10am - 4pm

We also open by appointment.

www.occleshawantiques.co.uk

OCCLESHAW ANTIQUES | 3 FORE STREET
SOUTH BRENT | DEVON | TQ10 9BQ

GILDERSLEVE ANTIQUES

Decorative & Useful Furniture



07557 276942

www.gildersleveantiques.com

gildersleveantiques@gmail.com

Old pine & country furniture
Decorative antiques & collectables

7-8 FORE ST. SOUTH BRENT, DEVON. TQ10 9BQ



TAVISTOCK PANNIER MARKET

DEVON | PL19 0AL



Tuesdays - Antiques & Collectables

Wednesday & Thursday - Crafts & Mixed Market

Friday - Charter Market

Saturday - Themed Markets

1st Saturday of the month: Aladdins Cave Collectibles • 2nd Saturday: Arts & Crafts • Others are mixed

MARKETS ARE OPEN FROM 9AM UNTIL 4.30PM

Traders specialise in: Silver • Jewellery • Coins & Bank Notes • Medals • Stamps • Post Cards
Military Uniforms, Artillery & Swords • Tools • Fishing Memorabilia • China • Glass • Cutlery • Oriental
Pottery • Antiquarian Books • Salvage • Old Bottles • General Antiques & Collectibles

FOR MORE INFORMATION VISIT: WWW.TAVISTOCK.GOV.UK

M & H Antiques

Antiques, Art and Decorative Items



19, Newcomen Road
Dartmouth, Devon, TQ6 9BN

01803 834433 or 07817469226

www.mandhantiques.co.uk info@mandhantiques.co.uk

Last shop in Dartmouth on the way to
Dartmouth Castle

We have a new warehouse at
Unit 8, Torr Trade Park,
Torr Quarry

Kingsbridge, Devon TQ9 7FA

OPEN SATURDAYS 9.30 to 1 pm

Kingsbridge Antiques Centre

4 Ebrington Street, Kingsbridge

TQ7 1DE 01548 856002

Next to King of Prussia Pub

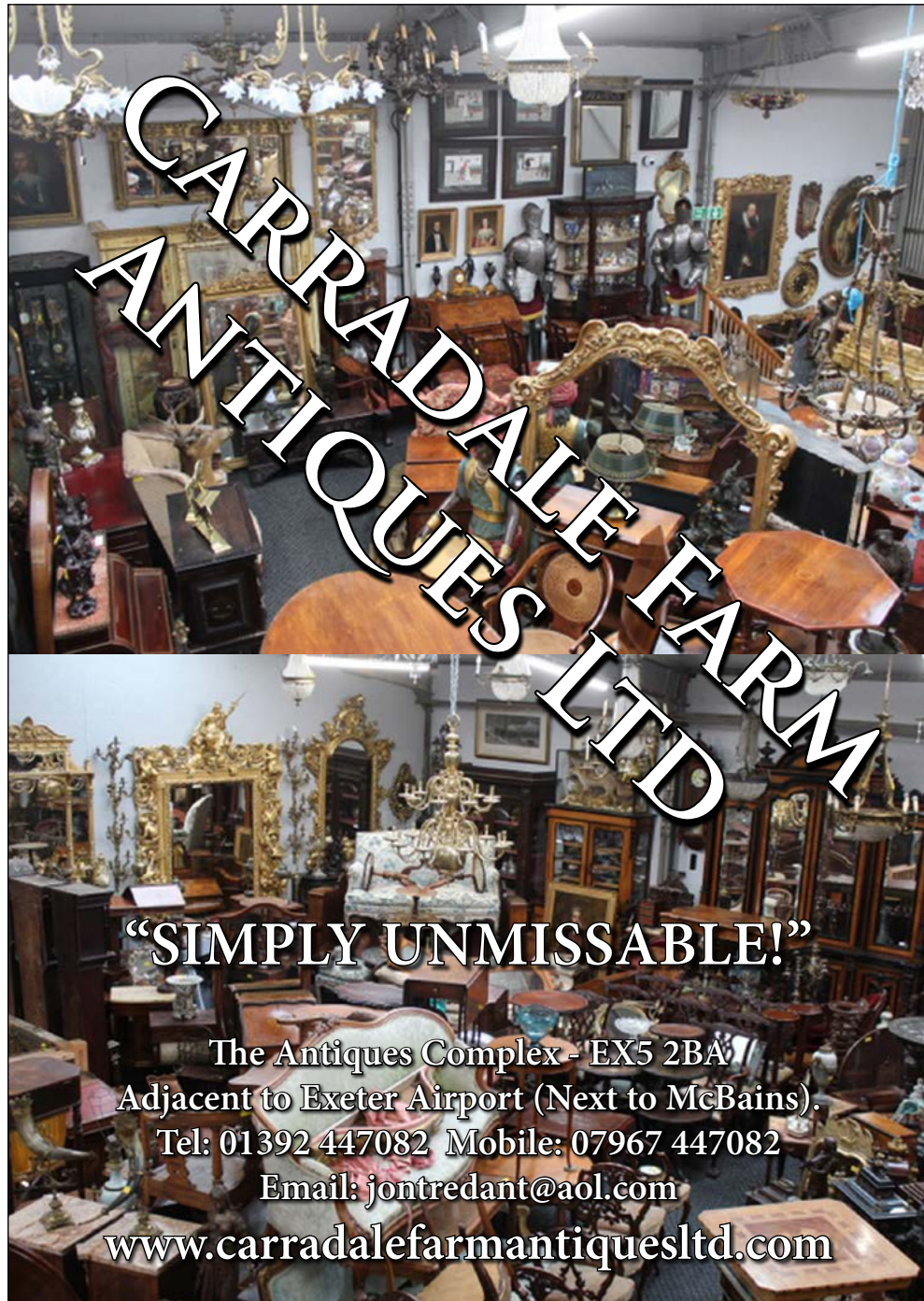
18 DEALERS IN 5 ROOMS

* Vintage * Retro
* Collectables * Toys and Models
* Jewellery * Silver * Ceramics
* Textiles * Books * Postcards
* Artwork & much more!

www.kingsbridgeantiques.co.uk



Barn near Sidmouth



**CARRADALE FARM
ANTIQUES LTD**

"SIMPLY UNMISSABLE!"

The Antiques Complex - EX5 2BA
Adjacent to Exeter Airport (Next to McBains).
Tel: 01392 447082 Mobile: 07967 447082
Email: jontredant@aol.com
www.carradalefarmantiquesltd.com



McBains

ANTIQUES CENTRE

At the Antiques Complex

THE LARGEST COLLECTION OF ANTIQUE
AND DECORATIVE FURNITURE IN THE SOUTHWEST



The Antiques Complex, Westcott Lane, Exeter Airport Industrial Estate, Devon EX5 2LL

01392 366261

mcbains-of-exeter@live.co.uk

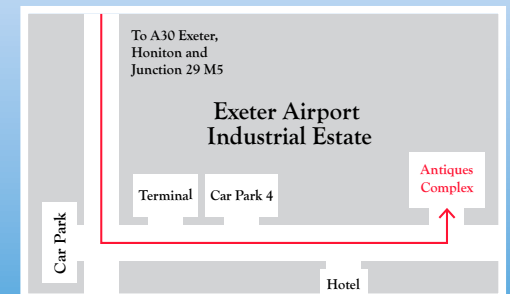
Open: Monday to Friday 10am - 5pm

Saturday: 10am - 1pm

Closed Bank Holidays

Free Parking

SPACE AVAILABLE FOR RENT



Check www.facebook.com/mcbainsantiques for daily updates

Kirsten's Curiosities

Vintage / Antique / Preloved
Curiosities and Collectibles
Bought and Sold

Follow on Facebook /
Instagram / Twitter

Check Facebook page or
phone for opening hours

24 Mill Street, Ottery St.
Mary, Devon, EX11 1AD
01404 815736



SIDMOUTH ANTIQUE CENTRE

OPEN MONDAY TO SATURDAY
10AM - 5PM

Over 25 Dealers selling a wide range of
Antique, Collectables & Vintage Items

Browsers more than welcome...

An Aladdins Cave of Various Items:
Furniture • Silver • Militaria • Coins
Postcards • Toys • Glass • Clocks
Ephemera • Jewellery • China

Tel. **01395 512588**

Devonshire House All Saints Rd, Sidmouth
EX10 8ES (Opposite the Post Office)

[f](#)@SidmouthAntiques

www.sidmouthantiques.co.uk

FREE LOCAL DELIVERY • WHEELCHAIR FRIENDLY

BRAMBLEWOOD & THICKET

INTERIORS & COUNTRY LIVING



Tel. 07828 059951

Open: Mon, Wed, Thur & Sat 10am - 3pm
35 Queen Street | Seaton | EX12 2NY

WWW.BRAMBLEWOODANDTHICKET.CO.UK

The Vintage Shed Colyton

Come and browse a wide range of Antiques, Vintage
and Local Craft items from over 20 Traders



[f](#) New Record Store NOW OPEN

Free Car Park - Find us beside the Electric Tramway
Stations Yard, Colyton. EX24 6HA

EMAIL: vintageshedcolyton@gmail.com

TEL: 01297 599121

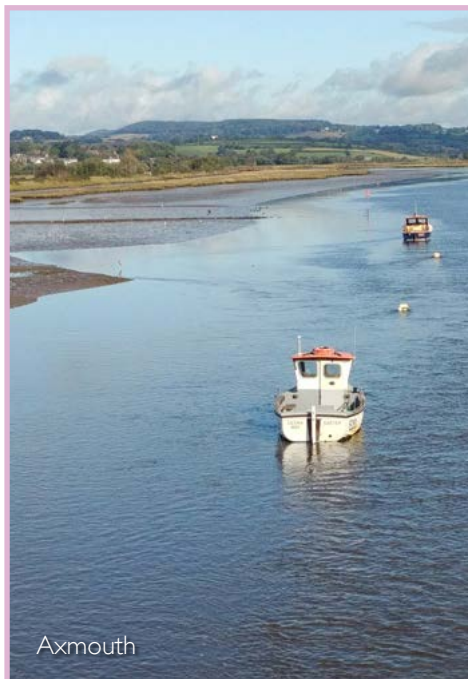
DOLPHIN ANTIQUES CENTRE

BEER, DEVON, Tel: 01297 24362

An Aladdin's cave of affordable antique,
vintage and collectable items situated in
the picturesque fishing village of Beer



OPEN: Mid-March to October, six days a week
10am to 5pm (closed on Tuesdays)
November to Mid-March: Thursday to Sunday
10am to 4pm



Axmouth

AXE VALE SHOW

20th - 21st June 2020
Saturday 10am - 5.30pm
Sunday 10am - 5pm



The Showground, Trafalgar Way, Axminster EX13 5RJ
Discounted online tickets available now or
purchase tickets at the gate

www.axevaleshow.com

Charity number: 1130829



The Axe Vale Show is a charitable fundraising event
for the charity 'Axe Vale Festival Limited'



The Old Chapel Antiques & Lifestyle Centre

Castle Street, Axminster, Devon EX13 5NP

Open: Tuesday - Friday 10am to 4pm,
Saturday 11am to 4pm and Closed Mondays

The Old Chapel is a charismatic Grade II
listed building that hosts about 25 dealers
offering a wide range of fascinating
items for sale over 2 floors.

Telephone: 01297 639995

ATBURY'S.com

Supplying, purchasing & sourcing of:

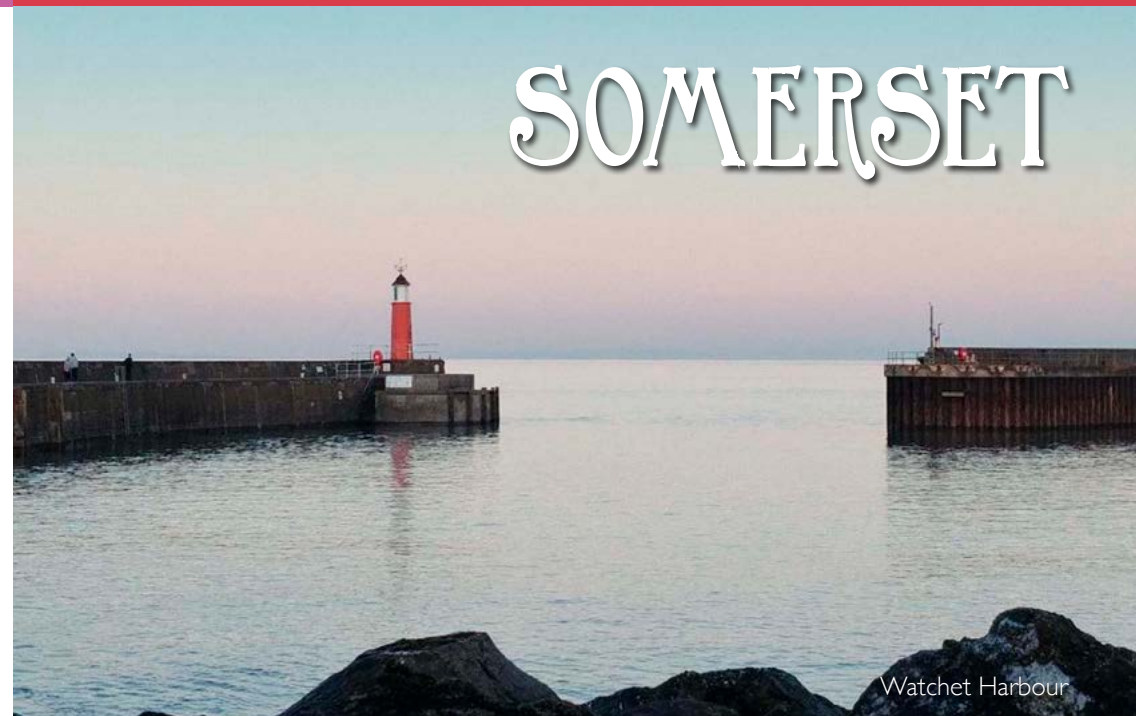
- Enamel signs - advertising
- Corgi models 1960's range
- Garage & motor sport memorabilia
- Upcycled motor parts furniture
- Along with an eclectic & quirky mix

Items can be seen on our online shop and at Hermitage Antiques, Honiton, EX14 1PW



Call David on 07581 600 500

www.atburys.com



Watchet Harbour

Fountain Antiques

42 Dealers
on 2 floors



132 High Street,

Honiton, EX14 1JP.

Tel: 01404 42074

A popular centre offering furniture garden and farm tools, china, glass, clocks, militaria, textiles and lace, prints, paintings, jewellery, silver, lighting and much more.

Open Monday to Saturday
9:30am until 5:30pm

BUSBYS RECLAMATION

BUILDING & ARCHITECTURAL



- Reclaimed Bricks & Stone
- Clay Roof Tiles & Slates
- Flagstones/Cobbles/Paving
- Fireplaces & Surrounds
- Timber Joists & Beams
- Doors & Windows
-and much more

Come and visit our yard at Donyatt, Ilminster, Somerset TA19 9PX or visit our website to see our range of products.

Contact us today with your requirements:

Office: 01460 54068 info@busbysreclamation.com

George: 07795 403510 Buz: 07979 840540

www.busbysreclamation.com



Ilminster Antiques & Interiors

10 Larchfield Estate, Dowlsh Ford, Ilminster TA19 0PF



Opening Hours: Monday to Saturday, 10am until 4pm

Tel: 01460 54901

Like & follow us on @Larchfield10

PHOENIX RISING

ANTIQUE FURNITURE & DECORATIVE ACCESSORIES



📍 Wednesday to Saturday 10am-4pm | 07746 707006 📱

www.phoenixrisingantiques.co.uk | [Etsy](#) PhoenixRisingAntique

UNIT 13 | ROSE MILLS IND ESTATE | ILMINSTER | TA19 9PS

Nº.57

57 EAST STREET, ILMINSTER, SOMERSET TA19 0AW

8 ROOMS OF ANTIQUES, VINTAGE AND ARCHITECTURAL ITEMS



...and a great little cafe
Homemade cakes and lunches
Proper coffee
Real fires

Open Wednesday
to Saturday
10am – 4pm

TEL: 01460 54856

LIKE US ON:
Facebook @No.57eaststreet
Instagram 57eaststreet



AIRS & GRACES

Interiors and Styling

Decorative items for sale • Interior styling service
Mural painting

Unit 13 Rose Mills Industrial Estate,
Ilminster, Somerset TA19 9PS

Wed – Sat 10am – 3pm
07768 182088

www.airsandgraces.net • airsandgraces@live.com

REMAINS TO BE SEEN

ANTIQUES, VINTAGE & COLLECTABLES

Well established shop in the heart of Ilminster Market Town
Buying & selling all types of Antiques, Collectables, Gold & Silver
Free valuations and on-site buyer every Friday



WWW.REMAINSTOBESEEN.CO.UK

Open: Monday - Saturday 9:30am - 4:30pm

Tel: 01460 53028 • 24, East Street, Ilminster, Somerset, TA19 0AJ

📱 Remains to be Seen 📱 Knot Just Pine Antiques Workshop

Taunton Antiques Collective

COURTLANDS INDUSTRIAL ESTATE, TAUNTON, SOMERSET, TA2 6NS



**ANTIQUE AND QUALITY
SECOND HAND FURNITURE**

Open Friday and Saturday 10am - 4pm
Or by appointment throughout the rest of the week

Telephone: 01823 752053 or 07540 146735

www.timelessfurniture.co.uk



Stuff 'n' Nonsense

**ANTIQUE FURNITURE AND
GARDEN RECLAMATION**

Open Monday, Friday and Saturday 10am - 4pm
Sunday 11am - 3pm,

Telephone: 0771 188 4467

Email: stuffandnonsenseld@gmail.com

www.stuffnonsense.com

SAVOY

Art Deco Collectables

NEW EMPORIUM RECENTLY OPENED

ART DECO WALNUT FURNITURE, LIGHTING AND
COLLECTABLES FROM THE 1920's / 1930's
ALL AT AFFORDABLE PRICES

STEP BACK IN TIME TO THE AGE OF GLAMOUR

Open Friday and Saturday 10am - 4pm, Sunday 11am - 3pm
Or by appointment throughout the rest of the week

Telephone: 07506 726652



STUFF 'N'
NONSENSE
UNIT 1A

TIMELESS
FURNITURE
UNIT 3A

PICKERS
PARADISE
UNIT 3D

SAVOY ART DECO
COLLECTABLES
UNIT 8A

f FIND US ON FACEBOOK AT: www.facebook.com/TauntonAntiquesCollective

SILVER STREET ANTIQUES MARKET TAUNTON

**OPEN EVERY MONDAY
9.00am - 4.00pm**

INCLUDING BANK HOLIDAYS

**The West Country's
Largest One Day Market**

Long Standing & Established Dealers

- Antiques & Collectables • Furniture
- Ceramics • Jewellery • Pictures • Coins
- Fine Book Binding • Watches

Indoor Cafe

01823 289327

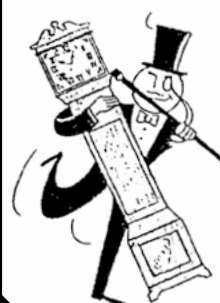
Silver Street, Taunton. TA1 3DH

SELWOODS ANTIQUE FURNITURE

MARY STREET, TAUNTON
TA1 3PE

Large Selection on 4 Floors

TELEPHONE 01823 272780



Established
1927

**MON TO SAT
9.30am - 4.00pm**
Customer car park at rear

FULLER STUFF

SECOND-HAND FURNITURE, VINTAGE, ANTIQUES & COLLECTABLES SHOP

THE OLD DAIRY
42 NORTH STREET
WELLINGTON
TA21 8LT

FREE PARKING
IN THE YARD



@FULLERSTUFF: WE POST WEEKLY STOCK UPDATES!

Our customers describe our shop as an Aladdin's Cave!
Established in The Old Dairy, a beautiful building in
Wellington, for over 5 years. We have rooms filled with
Furniture, Antiques & Collectables, together with a yard
cramped with Garden Furniture, Pots & Reclamation.



OPEN TUESDAY TO SATURDAY 10AM - 4PM

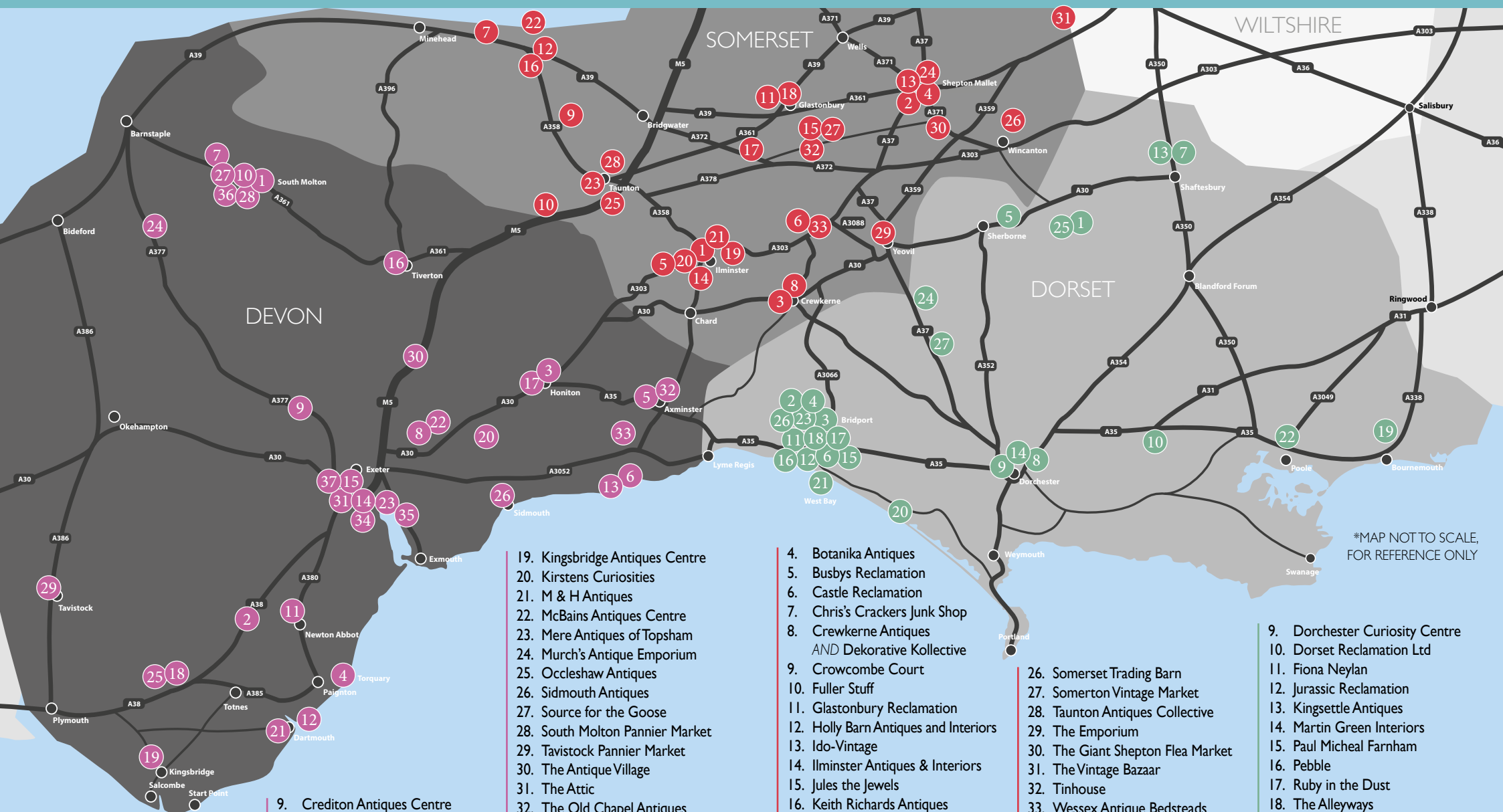
SHOP: 01823 662 762 OR KEV: 07786 227 231

Holly Barn Antiques and Interiors



Furniture, collectables, treen,
books & soft furnishings
Open Tues - Sat 10am to 4.30pm
www.hollybarnantiques.co.uk

2 Long Street, Williton,
West Somerset, TA4 4QN
01984 639922



*MAP NOT TO SCALE,
FOR REFERENCE ONLY

DEVON

1. Approximate Odds
2. Ashburton Antiques Trail
3. Atburys
4. Audacious Antiques
5. Axe Vale Show
6. Bramblewood & Thicket
7. Browns Antiques & Reclamation
8. Carradale Farm Antiques Ltd

9. Crediton Antiques Centre
10. Crown and Cotton
11. Decades of Antiques
12. Decades Past
13. Dolphin Antiques Centre
14. Exeter Matford Antiques & Collectors Fair
15. Exeter's Antiques Centre
16. Flora's Attic
17. Fountain Antiques
18. Gildersleve Antiques

19. Kingsbridge Antiques Centre
20. Kirstens Curiosities
21. M & H Antiques
22. McBains Antiques Centre
23. Mere Antiques of Topsham
24. Murch's Antique Emporium
25. Occleshaw Antiques
26. Sidmouth Antiques
27. Source for the Goose
28. South Molton Pannier Market
29. Tavistock Pannier Market
30. The Antique Village
31. The Attic
32. The Old Chapel Antiques
33. The Vintage Shed, Colyton
34. Tobys Reclamation
35. Topsham Quay Antiques Centre
36. Treasured Things
37. Vintage Trading Post

SOMERSET

1. Airts & Graces
2. Antiques & Interiors at Number 9
3. Antiques Bazaar

4. Botanika Antiques
5. Busbys Reclamation
6. Castle Reclamation
7. Chris's Crackers Junk Shop
8. Crewkerne Antiques
AND Dekorative Collective
9. Crowcombe Court
10. Fuller Stuff
11. Glastonbury Reclamation
12. Holly Barn Antiques and Interiors
13. Ido-Vintage
14. Ilminster Antiques & Interiors
15. Jules the Jewels
16. Keith Richards Antiques
17. Langport Vintage Market
18. Laura Lou Lou's
19. No. 57
20. Phoenix Rising
21. Remains to be Seen
22. Rogers Furniture The Emporium
23. Selwoods Antique Furniture
24. Shepton Mallet Antiques & Vintage Quarter
25. Silver Street Antiques Market

DORSET

1. 365 Vintage Interiors
2. Bridport Antiques
3. Bridport's Historic Street Market
4. Bridport Vintage Market Sundays
5. Cafe Pineapple
6. Clocktower Music
7. Dairy House Antiques & Interiors
8. De Dannan Antiques Centre

9. Dorchester Curiosity Centre
10. Dorset Reclamation Ltd
11. Fiona Neylan
12. Jurassic Reclamation
13. Kingsettle Antiques
14. Martin Green Interiors
15. Paul Micheal Farnham
16. Pebble
17. Ruby in the Dust
18. The Alleyways
19. The Bridge House Antiques Market
20. The Clock Work Shop
21. The Customs House Emporium
22. The Den
23. The Startled Hare
24. The Station Emporium & Cafe
25. The Vintage Tool Shop
26. Tina's Retro Clothing
27. Wardon Hill Trading Post

Top Drawer Antiques & Fine Art Fair

AT
CROWCOMBE COURT
SOMERSET

Saturday 17th & Sunday 18th
October, 10am - 4pm

*Ample FREE Parking
Refreshments & Light Lunches Available*



Instagram icon Facebook icon @Crowcombe Court



CROWCOMBE COURT

Crowcombe, Taunton, Somerset TA4 4AD

www.crowcombecourt.co.uk

E. admin@crowcombecourt.co.uk | T. 01984 618 752

ROGERS FURNITURE THE EMPORIUM

— WATCHET —

ANTIQUES, VINTAGE & COLLECTABLES,
FURNITURE AND LEGO



Find us **UPSTAIRS** at the Marina Shop,
an old cinema full of interesting items!

Like & follow us on Facebook & Twitter

Tel: 07764 437 777

Open every day - Summer: 10am - 5pm, Winter 10am - 4pm
The Marina Shop, The Esplanade, Watchet, Somerset TA23 0AJ



Keith Richards Antiques

Ceramics, Glass, Silver, Furniture, Fine Art,
Arts & Crafts, Art Nouveau & Art Deco Specialist



Torweston Farm, Williton, Taunton,
Somerset TA4 4LL Tel: 07833 337051

keithrichardsantiques.co.uk

LANGPORT VINTAGE MARKET

SINCE 2017

2nd Saturday Monthly
April - December
10am - 4pm

Cocklemoor Car Park, Whatley,
Langport, TA10 9RA & Other Venues
Around Town

www.LangportVintageMarket.co.uk

Chris's Crackers The Best Junk Shop in the South West

Antiques * Salvage * Reclamation



*The South West's
Leading
Salvage Yard!*



Call 01643 821873 or 07890 322756

Visit www.chriscrackers.net or email info@chriscrackers.net

The Junk Shop • Townsend Garage • Main Road • Carhampton • Minehead • Somerset • TA24 6NH

Jules the Jewels Jewellery Workshop Gold & Silver Jewellery



Watch Straps & Batteries
Jewellery Repairs & Alterations

Tel. 01458 897 070

14 Brunel Shopping Precinct, Somerton TA11 7PY

www.julesthejewels.co.uk

FIRST FRIDAY OF THE MONTH

SOMERTON MARKET

ANTIQUES.VINTAGE.RETRO.
ARTISAN FOOD.BIKE REPAIRS
AND MORE

9-2

MARKET PLACE. SOMERTON
SOMERSET

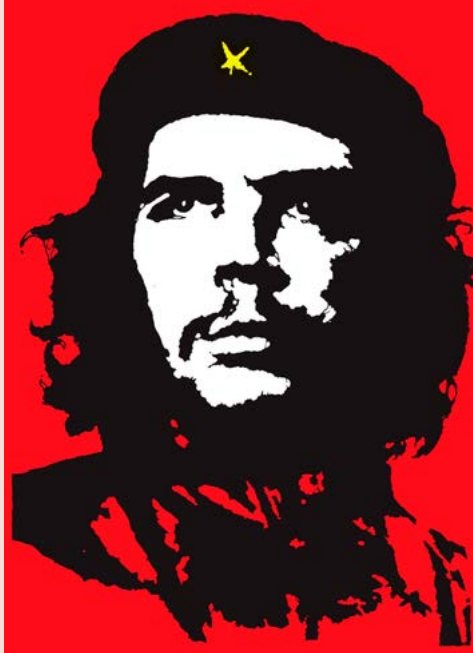
SOMERTONVINTAGEMARKET@GMAIL.COM
FIND US ON FACEBOOK:
SOMERTONVINTAGEMARKET

Pop-art emerged in the United Kingdom and United States during the mid to late 1950's. Much of it was based on popular imagery and mass cultural followings - adverts, cinema posters, logos, stylised images of film and theatre stars.

To quote from The Tate Gallery website:

"In 1957 pop artist Richard Hamilton listed the 'characteristics of pop art' in a letter to his friends the architects Peter and Alison Smithson: Pop Art is: Popular (designed for a mass audience), Transient (short-term solution), Expendable (easily forgotten), Low cost, Mass produced, Young (aimed at youth), Witty, Sexy, Gimmicky, Glamorous, Big business."

From the 1950's right through to today, Coca Cola, for example is seen as a desirable logo to reproduce on almost every conceivable product from T-shirts to storage boxes. Most people will instantly recognise the Che Guevara image which is so popular worldwide. West Country artist Banksy has taken



things to new heights with his topical and sometimes controversial graffiti.

Comics of the post-war era, right through to the 70's perpetuated this almost "swashbuckling" image.

The numerous images of Marilyn Monroe have adorned so many billboards, and are still popular in promoting current products. Star Wars, London buses, The Smurfs, the hammer and sickle, all had their moments of fame (and still have).

With the growth in popularity of POPULAR MUSIC, particularly in the 1960's and 70's there were many more opportunities for POPART and POP MUSIC to become entwined. LP sleeves soon became works of art in their own right, with many sleeves becoming worth as much if not more than the vinyl they protected!



Tinhouse

Home & Garden Antiques

- Antique Furniture
- Garden Antiques
- Pots • Birdbaths
- Sundials • Statues
- Garden Furniture

ITEMS BOUGHT AND
SOLD - CASH PAID
CAN COLLECT



Find us on facebook 


Open 10am - 4.30pm Sat, Sun, Mon & Tues

Other times by appointment

Tel: 01458 241298 Mob: 07971 244441

Sutton Road, South Hill, Somerton, TA11 7JG

www.tinhousehomeandgarden.co.uk



GLASTONBURY RECLAMATION
www.glastonburyreclamation.co.uk
find us on facebook and twitter
01458 831122
info@glastonburyreclamation.co.uk

The Old Pottery, Northload Bridge, Glastonbury BA6 9LE
Open: Monday to Saturday 08:30 - 17:30
Bank Holidays 10:00 - 16:00



The Giant SHEPTON FLEA Market

ROYAL BATH & WEST SHOWGROUND
Shepton Mallet BA4 6QN

2020 Dates:
Feb. 16th | Apr. 12th
July 19th | Aug. 16th
Oct. 11th | Nov. 29th

.....
9:30am - 4pm Entry: £4.50

For bookings please ring
01278 784912 with Debit Cards
Or download booking forms from
www.sheptonflea.com

LAURA LOU LOU'S

Vintage & Retro Boutique
GLASTONBURY

**Vintage Clothing
Upcycled Furniture**

And all things Kitsch

16 Benedict Street | Glastonbury | Somerset | BA6 9EX
Tel. 07968 653594
 @GwytherLouise  @LauraLouLou's

Antiques and Interiors at Number 9



9, Market Place, Shepton Mallet, Somerset, BA4 5AZ
 antiquesandinteriorsatnumber9@gmail.com
 Facebook @antiquesandinteriorsatnumber9

07901955641

IDO-VINTAGE

VINTAGE ★ DECOR ★ RETRO

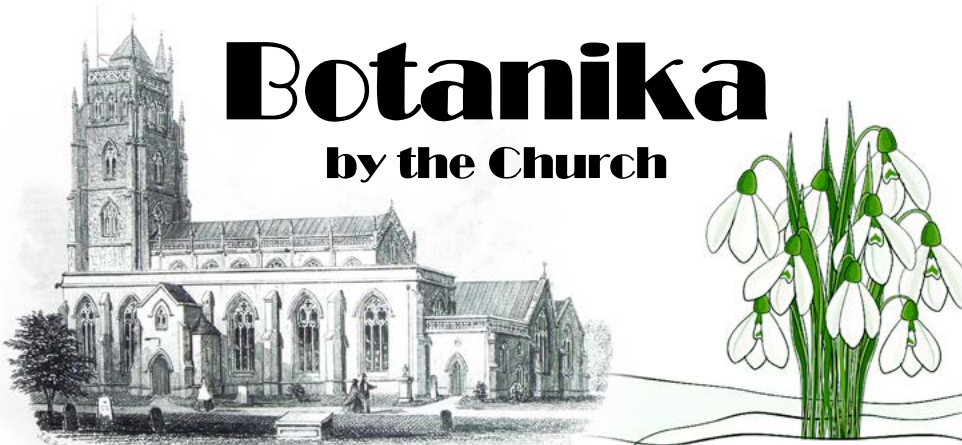


WWW.IDO-VINTAGE.COM

OPEN: WED TO SAT 9AM - 3PM ★ FIND US AT THE BOTTOM OF THE HIGH STREET
 T. 07774 935079 | 16 TOWN STREET | SHEPTON MALLET | BA4 5BE

Botanika

by the Church



Antiques, Vintage, Retro and Bizarre

www.botanikaantiques.co.uk botanikaantiques@gmail.com

Shepton Mallet, Regal Road 07599 113020

Behind No. 9 Antiques, in front of the Church

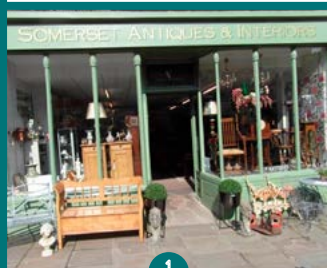
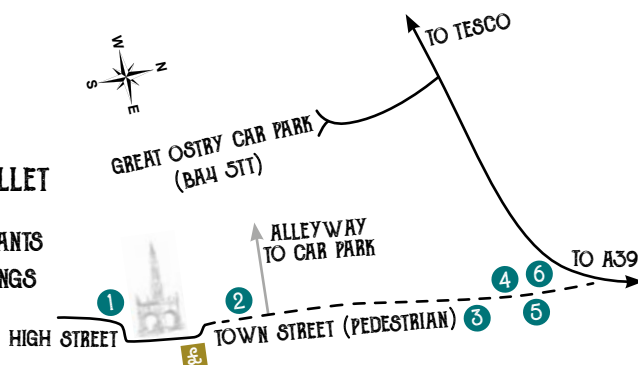


Bridge at Dowlish Wake

SHEPTON MALLET ANTIQUES & VINTAGE QUARTER

A WIDE VARIETY OF
ANTIQUES AND VINTAGE
TREASURES ON THE
PEDESTRIAN STREETS OF
HISTORIC SHEPTON MALLET

- ♦ PLENTY OF CAFES & RESTAURANTS
- ♦ FREE PARKING FRIDAY MORNINGS
- ♦ SUNDAY MARKETS
(LAST SUNDAY OF EACH MONTH)



SOMERSET ANTIQUES & INTERIORS
WWW.SOMERSETANTIQUES.CO.UK
OPEN MON TO SAT 10AM - 5PM



CEDAR HOUSE LIFESTYLE
WWW.CEDARHOUSELIFESTYLE.CO.UK
OPEN WED TO SAT 10AM - 4PM



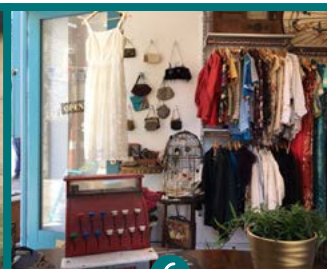
QUEENIE URCHIN
f @QUEENIEURCHIN
OPEN THURS TO SAT 10.30AM - 3PM



LOFT
f @LOFTEMPORIUM
OPEN THURS TO SAT 10AM - 4PM



HYBRIDS
f @HYBRIDSSHEPTONMALLET
OPEN WED TO SAT 10 - 4PM



LETHAL POSTMEN VINTAGE CLOTHING
f @LETHALPOSTMEN
OPEN THURS TO SAT 10.30AM - 4PM

FIND US ON FACEBOOK @SHEPTONMALLETVINTAGEQUARTER

**SOMERSET
TRADING
BARN**

**@ KIMBERS'
FARM SHOP**



- Collectables • Antiques • Up Cycled • Art • Fabrics • Clothes • Gifts • Jewellery •
- 25 TRADERS OVER 2 FLOORS: Next To Kimbers Farm Shop | OPEN: Tuesday-Sunday 10-4pm
THE KITCHEN: NEW on site Bistro & Coffee Shop | Between Bruton & Wincanton on the B3081

01963 33177 | info@kimbersfarmshop.co.uk | f @Somersettradingbarn | Charlton Musgrove, Wincanton BA9 8HD

The Vintage Bazaar

Decorative Antiques • French Brocante
Vintage Fashion & Textiles



@TheVintageBazaarEvents

2020 Vintage Bazaar Dates:

MARCH 14TH - The Corn Exchange, Devizes, Wiltshire
APRIL 25TH - The Cheese & Grain, Frome, Somerset
JUNE 20TH - The Cheese & Grain, Frome, Somerset
OCTOBER 24TH - The Cheese & Grain, Frome, Somerset
NOVEMBER 28TH - The Corn Exchange Devizes, Wiltshire

Castle Reclamation

• Fireplaces • Flagstones • Furniture • Oak Flooring

- Architectural Antiques • Wide Oak Flooring
- Hand carved natural stone fireplaces
- 16th & 17th Century style Furniture
- Oak & Painted Pine Kitchens
- Replica Blue Lias, Purbeck and Hamstone Flagstones



Parrett Works, Martock, Somerset, TA12 6AE Tel: 01935 826483

www.castlereclamation.com

WESSEX ANTIQUE BEDSTEADS

**Percombe (A303), Stoke Sub Hamdon,
Somerset TA14 6RD**

At Wessex Antique Bedsteads you will find one of the largest and most varied collections of Brass, Iron and Wooden Bedsteads in the UK from the Victorian and Edwardian eras with always more than 4000 bedsteads in stock.

We are able to offer quality made to measure, mattresses and bases in any shape or size and also offer a full restoration service and carry a wide range of bed spares.

We always have an interesting selection of other antique furniture on display.

Nationwide delivery and worldwide shipping available. We are easy to find right next to the A303.

Our opening hours are:

- Mon – Fri: 9am – 5pm
- Sat: 10am – 2pm

Sun & Bank Holidays by prior appointment

Email: info@wessexbeds.co.uk

Tel: 01935 829147

www.wessexbeds.co.uk

We look forward to seeing you soon...



THE EMPORIUM

ANTIQUES | INTERIORS | CAFE | GIFTS



65+ INDEPENDENT RETAILERS & ARTISANS

Visit our cafe for breakfast, lunch and afternoon tea

Mon - Fri 9am - 5:30pm | Sat 9am - 5pm

39 Princes Street, Yeovil BA20 1EG | www.theemporiumyeovil.co.uk | 01935 579482

CREWKERNE

A DUO OF ANTIQUES AND DECORATIVE SHOPS ON MARKET STREET



Crewkerne Antiques & Interiors

The antique centre in the centre of town

Antiques, Country Pine & Painted Furniture, Ceramics, Silver, Coins, Militaria, Jewellery, Art, Antiquities & Much More...

Telephone: 01460 77111 Email: crewkerneantiques@yahoo.com

DEKORATIVE KOLLECTIVE

A collective of dealers in Antique Country Furniture, Architectural & Decorative Items

Telephone: 01460 75500

Antiques Bazaar

A Great Centre for Antiques and Collectables

Over 95 traders at one large venue

TRADING 7 DAYS A WEEK



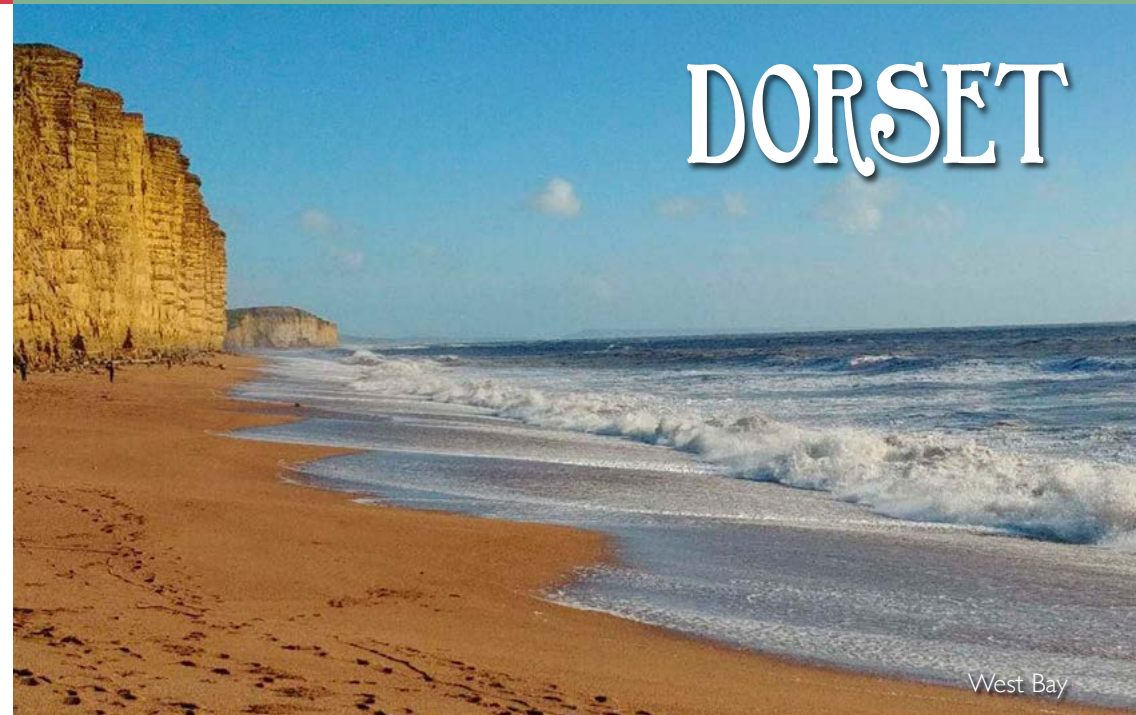
The Old Textile Mill, South Street, Crewkerne. TA18 8AG

Tel: 01460 77121

FREE PARKING • CAFE

www.antiquesbazaar.co.uk

DORSET



West Bay

BRIDPORT'S HISTORIC STREET MARKET

Every Wednesday and Saturday is market day in the vibrant town of Bridport

With an amazing selection and variety of stalls along the three main streets to browse and delicious food to enjoy there are so many reasons to visit...

Bridport



your local market



Further information call **01308 424901** or visit **www.bridportandwestbay.co.uk**

The
STARTLEDHARE
ANTIQUES &
DECORATIVE

thestartledhare@gmail.com
07902992095

Unit 58 St Michael's Trading Estate
Bridport, Dorset, DT6 3RR



Tina's Retro Clothing

I sell beautiful
preloved clothing

You can find anything -
from a vintage dress,
to a unique bag, to a
mens blazer...

1st Floor, Tower Studio
St Michaels Trading Estate
Bridport, Dorset, DT6 3RR
Open: Wed to Sat, 10am til 4pm

@Tina'sRetroClothing
@tina.keating1

www.tinasretroclothing.com



RUBY in the DUST

Vintage Home Antiques Decorative Finds



St. Michaels Lane, Bridport. DT6 3RR

rubydust57_@ Tel: 07970 700983

Fiona Neylan
Millinery, Art & Design



Studio 48

St. Michael's, Bridport, DT6 3RR
T. 07905 999 437 | E. hats@fionaneylan.co.uk
www.fionaneylan.co.uk

@FionaNeylanHats @fionaneylan



CLOCKTOWER MUSIC
Vinyl Records
of all types and styles bought and sold



Open Wednesday to Saturday 10am - 5pm
01308 458077

www.clocktowermusic.co.uk
10a St Michaels Estate, Bridport, Dorset, DT6 3RR

f i tripadvisor

JURASSIC RECLAMATION
LIMITED

Collectables & Vintage,
Curio & Bygone

Broomhills Farm, West Bay Fields,
Bridport DT6 5LB

sales@JurassicReclamation
www.jurassicreclamation.co.uk

Tel. 07398 939 692

Open: Mon to Fri 8am - 5pm
Saturday 9am - 4pm

pebble




Beautiful vintage & re-presented
furniture, textiles and accessories.

www.pebblevintage.com

St Michael's Trading Est, Bridport, Dorset.
hello@pebblevintage.com
07713 859560



BRIDPORT ANTIQUES

Situated on West Street, in the heart of Bridport, the historic building that was Joseph Gundry and Co Ltd now houses one of the finest antiques showrooms in the south-west of England. With its diverse range of furniture, art, silver and collectables from the 1600's through to the 1900's there is something to cater for everyone's tastes.



OPEN DAILY 10am to 5pm
EARLY CLOSING Thursday at 2pm
CLOSED SUNDAY
APPOINTMENTS AVAILABLE
OUTSIDE OF THESE HOURS



THE OLD COURT, 41 WEST STREET, BRIDPORT, DORSET DT6 3QU
TELEPHONE: 01308 455646 WEBSITE: www.bridportantiques.co.uk



Also in Bridport...

The Alleyways
Antiques Centre
Over 50 traders in the Art & Vintage Quarter,
St. Michaels Trading Estate Bridport, Dorset DT6 3RR
Open 7 days from 10:00am
Telephone 01308 425 111



VINTAGE ANTIQUES RETRO
FOOD DRINK MUSIC
AUTOJUMBLE
ARTIST'S OPEN STUDIOS
WWW.STMICHAELSARTISTS.COM

Email: vintagemarketbridport@gmail.com Facebook.com/BridportArtVintageQuarter

2020 MARKET DATES

10am to 4pm LAST SUNDAY OF EVERY MONTH

29th March | 26th April | 31st May | 28th June | 26th July
30th August (Bank Holiday) | 27th September | 25th October

ST MICHAEL'S TRADING ESTATE DT6 3RR



BRIDPORT ART & VINTAGE QUARTER

The Alleyways Antiques Centre

Over 50 traders in the Art & Vintage Quarter,
St. Michaels Trading Estate Bridport, Dorset DT6 3RR

Open 7 days from 10:00am

Telephone 01308 425 111
www.bridportantiques.co.uk

find us on
Facebook



Like and follow us



THE CLOCK WORK SHOP

— DORSET & HAMPSHIRE —

Unrivalled
collection
of clocks,
barometers
& furniture

Fine Antique Clocks and Furniture



Tel: 01305 873852

www.dorsetantiqueclocks.co.uk



Visit our large showroom:

West Yard Barn, West Street, Abbotsbury, Dorset DT3 4JT

Paul
Michael
Farnham

Studio 49

St Michael's Trading Estate,
Bridport, Dorset,
DT6 3RR
07792 422 003

Instagram: @Paul_Michael_Farnham
Email: studio49@paulmichaelfarnham.co.uk

paulmichaelfarnham.co.uk



Cerne Abbas

THE CUSTOMS HOUSE EMPORIUM

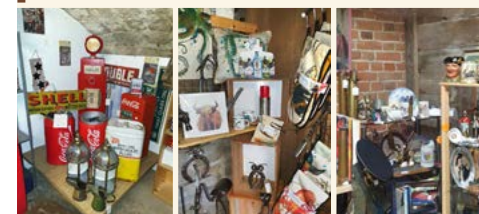
VINTAGE • ANTIQUE • RETRO • CRAFTS

VISIT US FOR A GREAT FAMILY DAY OUT ON
THE JURASSIC COAST

OVER 100 TRADERS • OPEN 7 DAYS A WEEK

NEW TRADERS WELCOME

Bev.beavis@customshouse.co.uk • 01308 422222
Space from £60 per month



WEST BAY • DORSET

DORCHESTER CURIOSITY CENTRE

- FURNITURE - ANTIQUES -
- VINTAGE CLOTHING - RECORDS -
- COLLECTABLES - TEXTILES -

*"The perfect place to find a unique gift
or that one-off piece of furniture."*

We have over 70 traders across 12,000sq feet and at the heart is our Curiosity Centre Café offering a delicious menu of tasty delights.

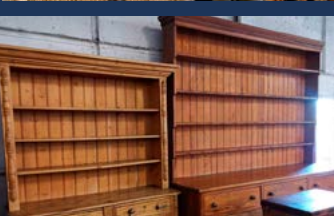


Enjoy free wi-fi and ample parking as you browse beautiful antiques, retro items, quality crafted shabby chic, glassware, ceramics and thousands of curios & collectables.

Open 7 days a week
Mon – Sat 9-5.30 and Sunday 10-4

The Old Bus Depot, Grove Trading Estate,
Dorchester DT1 1ST
Tel. 01305 251886
Email: dorchcuriocentre@live.co.uk
Facebook@[dorchestercuriositycentre](https://www.facebook.com/dorchestercuriositycentre)
Instagram@[dorchcuriocentre](https://www.instagram.com/dorchcuriocentre)

We also buy items and offer a delivery service across Dorset.



Martin Green INTERIORS



CLASSIC - CONTEMPORARY - COUNTRY

Come and visit us at 63 High West Street,
Dorchester. DT1 1UY Call 07587046055

www.martingreeninteriors.co.uk

De Dannan ANTIQUES CENTRE

Two floors of Antiques, Vintage
items & Collectables for all tastes

ANTIQUÉ & VINTAGE FURNITURE
DECORATIVE ITEMS



27 LONDON ROAD, DORCHESTER,
DORSET, DT1 1NF

TEL. 01305 250066

WARDON HILL TRADING POST

A37 DORCHESTER - YEOVIL DT2 9PW

Antiques • Vintage • Collectables • Craft



OVER 60 TRADERS
**TEAROOM &
GARDEN CENTRE**

OPEN MON-SAT 9-5 / SUN 9-4

**SPACE AVAILABLE
TO RENT**

TEL: 01935 83069

f FIND US ON FACEBOOK

We are wheelchair accessible and dog friendly

The Station Emporium & Cafe



A plethora of Antique, Vintage & Collectable items in our Village Shop
House/Garden and Jewellery items always wanted
Free quotes on house clearances and valuations

Yetminster, Dorset DT9 6LH • Tel: 01935 873237 • Email: contact@thestationemporium.co.uk



www.thestationemporium.co.uk



The Vintage Tool Shop



Hand Tools of All Trades & Crafts Bought & Sold

Thousands of Tools online and in our store in Stalbridge, DT10 2RQ

www.vintagetoolshop.com 01963 362007

Cafe Pineapple

Situated on the Dorset/Somerset border, this hidden gem is rapidly gaining a reputation for its vintage collectables, home and giftware. Hosting a range of independent traders selling brocante, vintage, antiques, curiosities and gardenalia.

Friendly cafe serving homemade scones, cakes and lunches. Free car park behind cafe on East Street. Easy access from the A30.



High Street, Milborne Port DT9 5FB Tel: 01963 250726
Facebook @cafeapple Instagram @cafeapple6

36.5

VINTAGE INTERIORS

An eclectic mix of antique, vintage and contemporary finds for the home and garden



Find us:

High Street, Stalbridge
Dorset DT10 2LH

Midway between Shaftesbury & Sherborne

WWW.365VINTAGEINTERIORS.CO.UK | TEL: 07843 701679

THE DEN

ANTIQUES • VINTAGE • RETRO

COME AND VISIT OUR
EXTRAORDINARY EMPORIUM ON
THE BEAUTIFUL SOUTH COAST
FIND US HERE - BH11 8NX

WE ARE FULL TO THE BRIM OF INTERESTING & WONDROUS
FINDS, HOUSING MORE THAN 100 INDIVIDUAL TRADERS.
PLUS THE KITCHEN DELICIOUS HOME COOKED FOOD & DRINK

SAY
HELLO

TEL 01202 573190
THEDENEMPORIUM@OUTLOOK.COM

UNIT 9, 11-15 FRANCIS AVENUE,
BOURNEMOUTH, DORSET, BH11 8NX

OPEN 7 DAYS A WEEK FREE PARKING
FURRY FRIENDS WELCOME CHILDREN'S PLAY SECTION

Dorset Reclamation Ltd

High Quality Reclaimed Traditional Building
Materials and Architectural Antiques

Old Flagstones,
Aga Cookers,
Terracotta Floors,
Pine, Oak and
Elm Floorboards,
Oak Beams and
Pine Doors,
Period Bathrooms,
Butler's Sinks,
Fireplaces and
Architectural and
Garden Antiques



Cow Drove, Bere Regis, Dorset BH20 7JZ

Tel: 01929 472200

Email: info@dorsetreclamation.co.uk

www.dorsetreclamation.co.uk

DELIVERY ARRANGED

The Aga Exchange



Tel: 01929 472200

Reconditioned Aga Cookers and
Re-enamelling Service Electric
Conversions

OIL - 13AMP ELECTRIC

www.theagaexchange.co.uk

WANT TO JOIN US NEXT YEAR?



NEXT TIME: 2021
HELLO@THEANTIQUESTOURIST.COM
WWW.THEANTIQUESTOURIST.COM

THE BRIDGE HOUSE ANTIQUES MARKET LONGHAM

A FINE SELECTION OF OVER 50 HIGH
QUALITY INDEPENDENT TRADERS, ALL
UNDER ONE ROOF, OFFERING A VAST
SELECTION OF ANTIQUES, RETRO AND
VINTAGE COLLECTABLES.

OPEN 10AM-4PM | COFFEE
EVERYDAY | SHOP

10 RINGWOOD ROAD
LONGHAM, DORSET BH22 9AN

01202 574 440

INFO@THEBRIDGEHOUSEANTIQUESMARKET.CO.UK

THEBRIDGEHOUSEANTIQUESMARKET.CO.UK

DAIRY HOUSE ANTIQUES+ INTERIORS

- Vintage and antique furniture
- Silver
- Ceramics & glass
- Textiles
- Rustic & painted items
- Lighting
- Decorative pieces
- Taxidermy
- Books
- Rugs
- Jewellery
- Gardenalia
- Art, prints and much more



Station Road, Semley, SP7 9AN • 01747 853317
shop@dairyhouseantiques.com • dairyhouseantiques.com
Open 10-5, Mon-Sat, 11-4 Sun & Bank Hols • Follow us on Social!



Kingsettle Antiques

TELEPHONE: 01747 850467
EMAIL: KINGSETTLEANTIQUES@GMAIL.COM

WWW.KINGSETTLEANTIQUES.CO.UK
STATION ROAD, SEMLEY, SHAFTESBURY, SP7 9AH

Large Antiques Centre Selling a Huge
Amount of Varied & Interesting Items

JUST OFF A350

OPEN MONDAY TO SATURDAY 10AM - 5PM, SUNDAY 11AM - 4PM

OPEN BANK HOLIDAYS 11AM - 4PM

ALL ANTIQUES, GOLD, SILVER & CHATTELS WANTED - HOUSE CLEARANCES UNDERTAKEN





Grandma's Attic

Antique & Collectors Fairs



Quality Antique Fairs In Dorset & Hampshire Est.1985

2020 Dates

SUN 5 APR: THE GRANGE LEISURE CENTRE, MIDHURST GU29 9HD
EASTER MON 13 APR: RIVER PARK LEISURE CENTRE, WINCH SO23 7DD
EASTER MON 13 APR: ALLENDALE CENTRE, WIMBORNE BH21 1AS
SUN 10 MAY: HILTON @ THE AGEAS BOWL SOUTHAMPTON S030 3XH
SUN 17 MAY: VILLAGE HALL, BROCKENHURST SO42 7RY
B/H MON 25 MAY: ALLENDALE CENTRE, WIMBORNE BH21 1AS
SUN 30 AUG: ALLENDALE CENTRE, WIMBORNE BH21 1AS
B/H MON 31 AUG: RIVER PARK LEISURE CENTRE, WINCH SO23 7DD
SUN 6 SEPT: THE GRANGE LEISURE CENTRE, MIDHURST GU29 9HD
SUN 13 SEPT: VILLAGE HALL, BROCKENHURST SO42 7RY
SUN 20 SEPT: WESTGATE LEISURE CENTRE, CHICHESTER PO19 1RJ
SAT/SUN 10/11 OCT: PAVILION, BOURNEMOUTH BH1 2BU
SUN 18 OCT: HILTON @ THE AGEAS BOWL SOUTHAMPTON S030 3XH
SUN 25 OCT: RIVER PARK LEISURE CENTRE, WINCH SO23 7DD
SUN 1 NOV: THE GRANGE LEISURE CENTRE, MIDHURST GU29 9HD
SUN 8 NOV: ALLENDALE CENTRE, WIMBORNE BH21 1AS
SUN 22 NOVEMBER: WESTGATE LEISURE CENTRE, CHICHESTER PO19 1RJ
SUN 29 NOV: HILTON @ THE AGEAS BOWL SOUTHAMPTON S030 3XH
SUN 6 DEC: LITTLEDOWN CENTRE, BOURNEMOUTH BH7 7DX

**For 2021 dates, opening times, admission fees
and stallholder enquiries please visit our website.**

Tel. - 01202 779564 / 07960 502508
Email - info@grandmasatticfairs.co.uk

www.grandmasatticfairs.co.uk