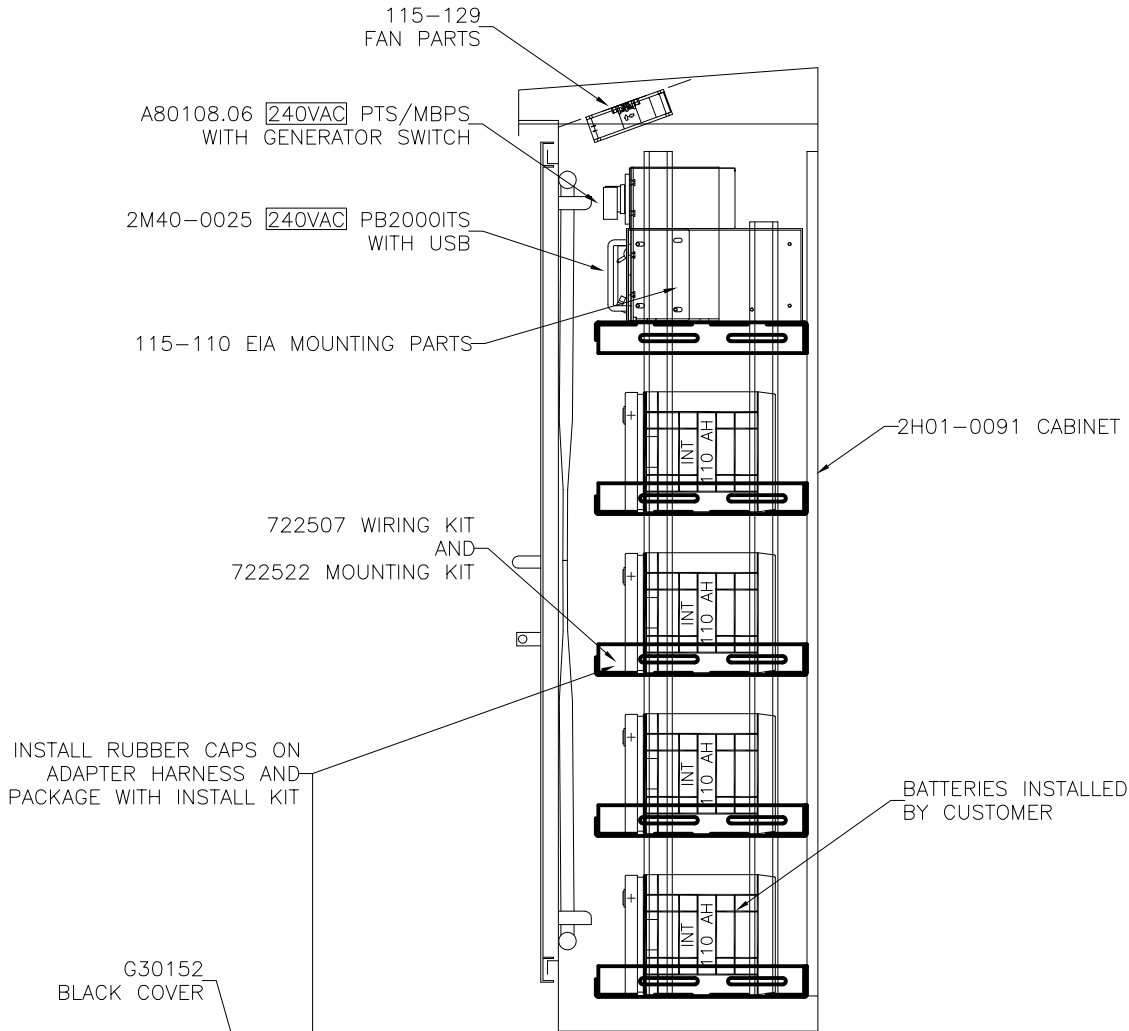
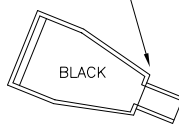


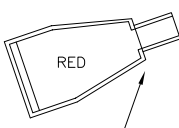
# LEFT INSIDE VIEW



G30152  
BLACK COVER



G30153  
RED COVER



**PART OF 739579P BATTERY HARNESS PARTS**

739577  
BATTERY ADAPTER CABLE

APPROVALS		DATE
DRAWN BY	TH	03-01-11
CHECKED BY	BB	03-01-11

2	08-01-11	TH	MOVE SE BLOCKS UNDER TOP SHELF	GMC
1	04-02-11	TH	CHANGE TO LARGER SE BLOCKS	GMC
0	03-01-11	TH	RELEASE TO PRODUCTION	GMC
REV	DATE	DRAWN	CHANGE	APPROV

**PEEK** 2906 CORPORATE WAY  
PALMETTO, FLORIDA 34221, USA

TITLE:	240VAC	This document and the information it contains are the property of PEEK and are proprietary and confidential to PEEK. Any unauthorized publication, copying, use, reproduction, disclosure, or dissemination of the document or information by any means (including electronic means) is prohibited.
	BC100HZG CAB, PB2000ITS, PTS/MBPS, & NO BAT HEATERS	
ANSI A	DRAWING NO. 5200#16626	REV 2 SHT 1 OF 13

# FRONT VIEW

A80108.06 240VAC PTS/MBPS WITH GENERATOR SWITCH

2M40-0025 240VAC PB2000ITS WITH USB

115-111 EIA RACK SIDES & HARDWARE

115-127 BLUE LED & CORD PARTS

115-114 30A LIFT COVER GENERATOR INLET PARTS

115-110 EIA BRACKETS & HARDWARE

115-189 DUAL SERVICE ENTRANCE TERMINAL BLOCKS

40 1/4"

31 1/8"

22"

12 7/8"

3 3/4"

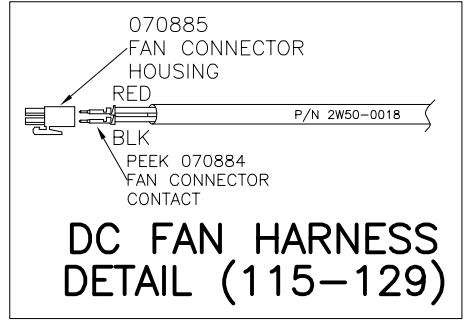
BATTERIES INSTALLED BY CUSTOMER

INT 110 AH

INT 110 AH

INT 110 AH

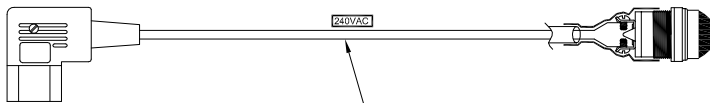
INT 110 AH



BATTERY SHELVES GO IN OPEN SIDE UP WITH SLOTS TO BACK WALL OF CABINET

DOOR HINGE ON RIGHT

2H01-0077 SHELF



## ON BATTERY INDICATOR

115-168 BLUE LED & CORD PARTS

APPROVALS		DATE
DRAWN BY	TH	03-01-11
CHECKED BY	BB	03-01-11

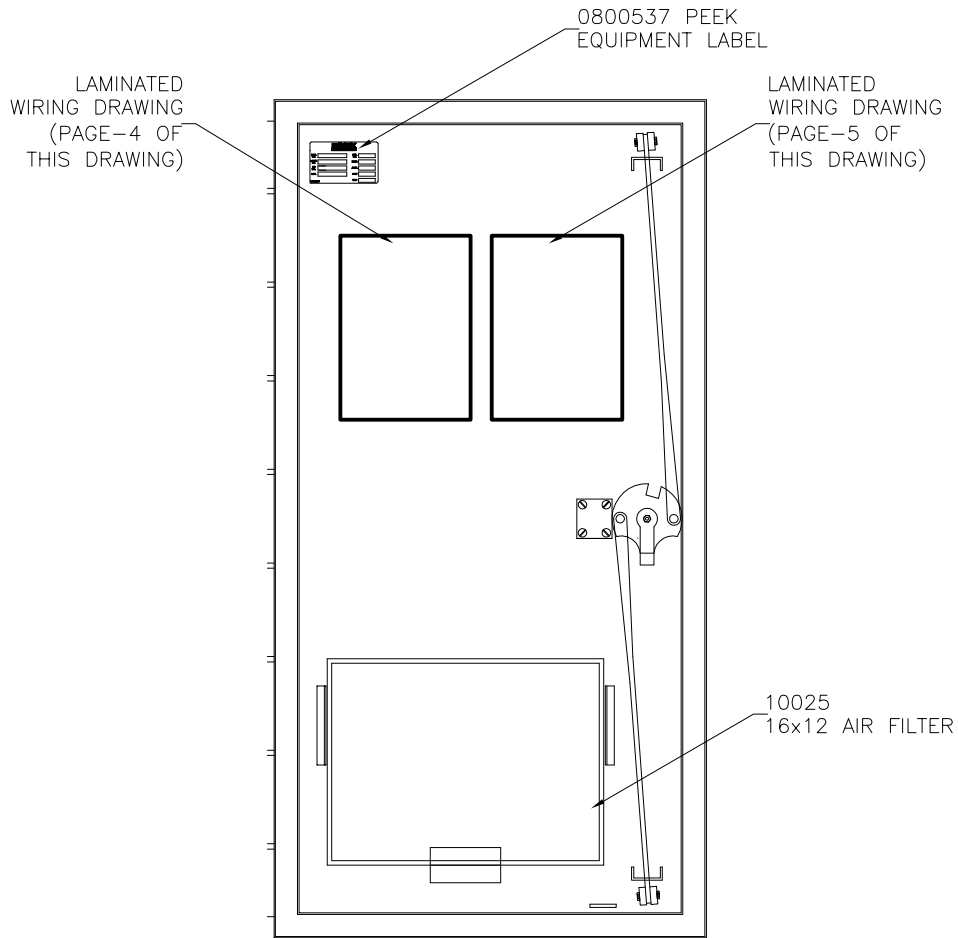
**PEEK** 2906 CORPORATE WAY  
PALMETTO, FLORIDA 34221, USA

TITLE: 240VAC  
BC100HZG CAB, PB2000ITS, PTS/MBPS, & NO BAT HEATERS


ANSI A DRAWING NO. 5200#16626 REV 2 SHT 2 OF 13

This document and the information it contains are the property of PEEK and are proprietary and confidential to PEEK. Any unauthorized publication, copying, use, reproduction, disclosure, or dissemination of the document or information by any means (including electronic means) is prohibited.

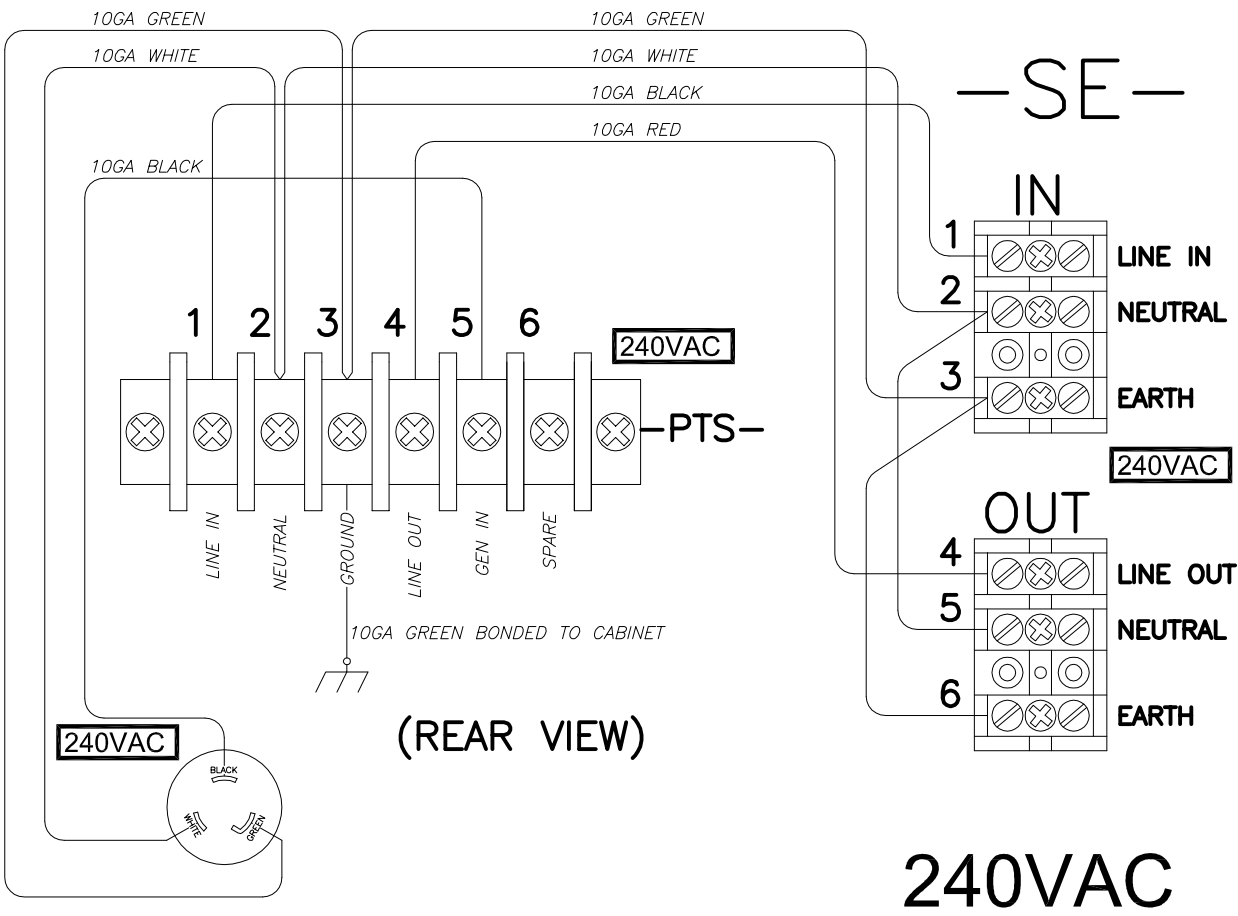
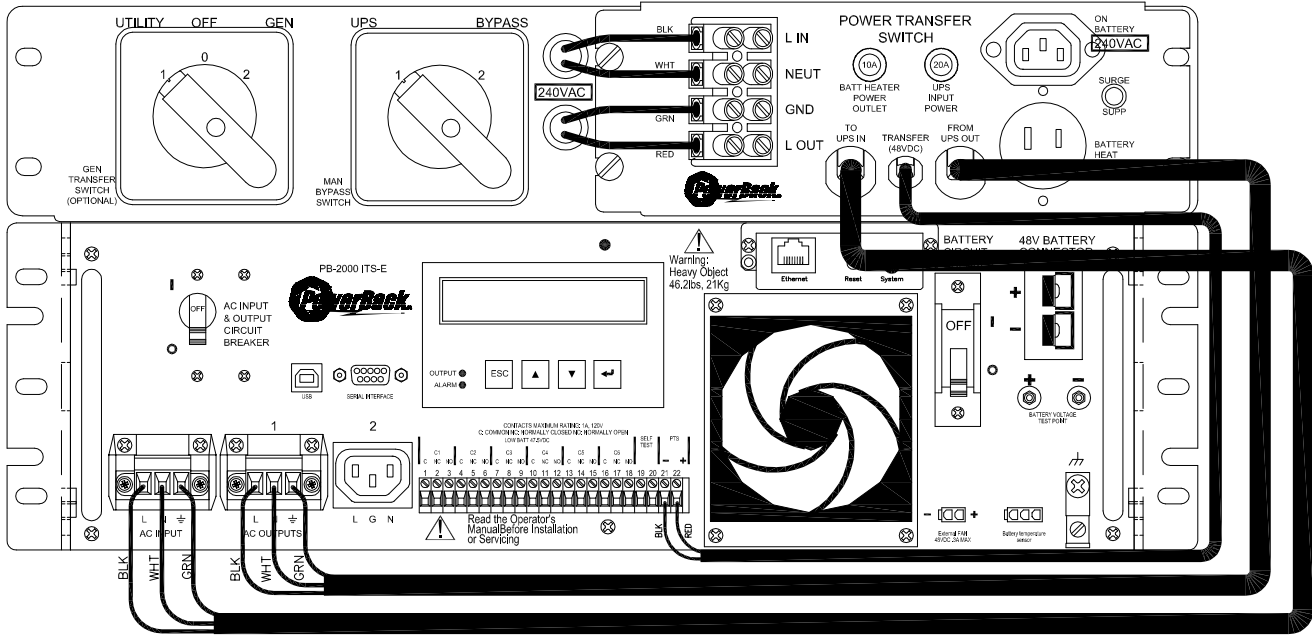
# DOOR INSIDE VIEW



APPROVALS		DATE
DRAWN BY	TH	03-01-11
CHECKED BY	BB	03-01-11

 <b>2906 CORPORATE WAY PALMETTO, FLORIDA 34221, USA</b>		TITLE: <b>240VAC</b>	
		BC100HZG CAB, PB2000ITS, PTS/MBPS, & NO BAT HEATERS	
ANSI A	DRAWING NO.	5200#16626	REV 2 SHT 3 OF 13

This document and the information it contains are the property of PEEK and are proprietary and confidential to PEEK. Any unauthorized publication, copying, use, reproduction, disclosure, or dissemination of the document or information by any means (including electronic means) is prohibited.



APPROVALS		DATE
DRAWN BY	TH	03-01-11
CHECKED BY	BB	03-01-11

**PEEK** 2906 CORPORATE WAY  
 PALMETTO, FLORIDA 34221, USA

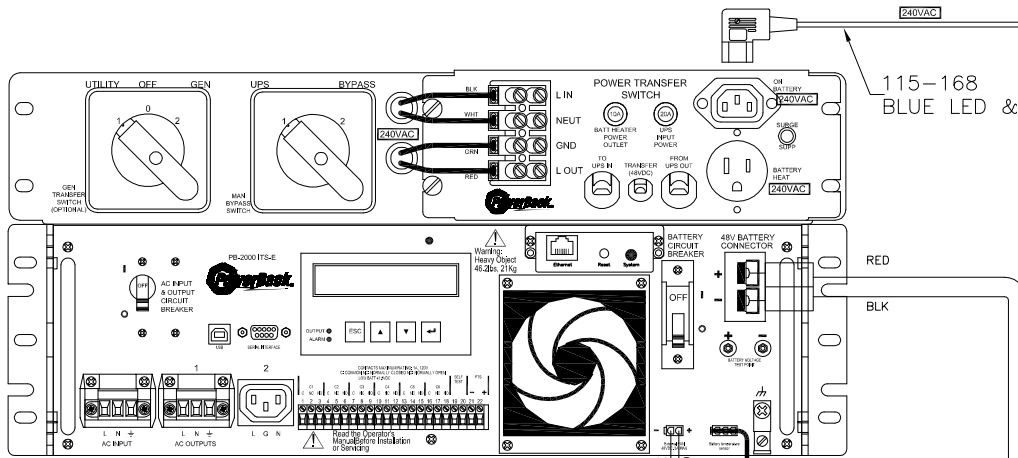
TITLE: **240VAC**  
 BC100HZG CAB, PB2000ITS,  
 PTS/MBPS, & NO BAT HEATERS

ANSI A DRAWING NO. 5200#16626 REV 2 SHT 4 OF 13

This document and the information it contains are the property of PEEK and are proprietary and confidential to PEEK. Any unauthorized publication, copying, use, reproduction, disclosure, or dissemination of the document or information by any means (including electronic means) is prohibited.

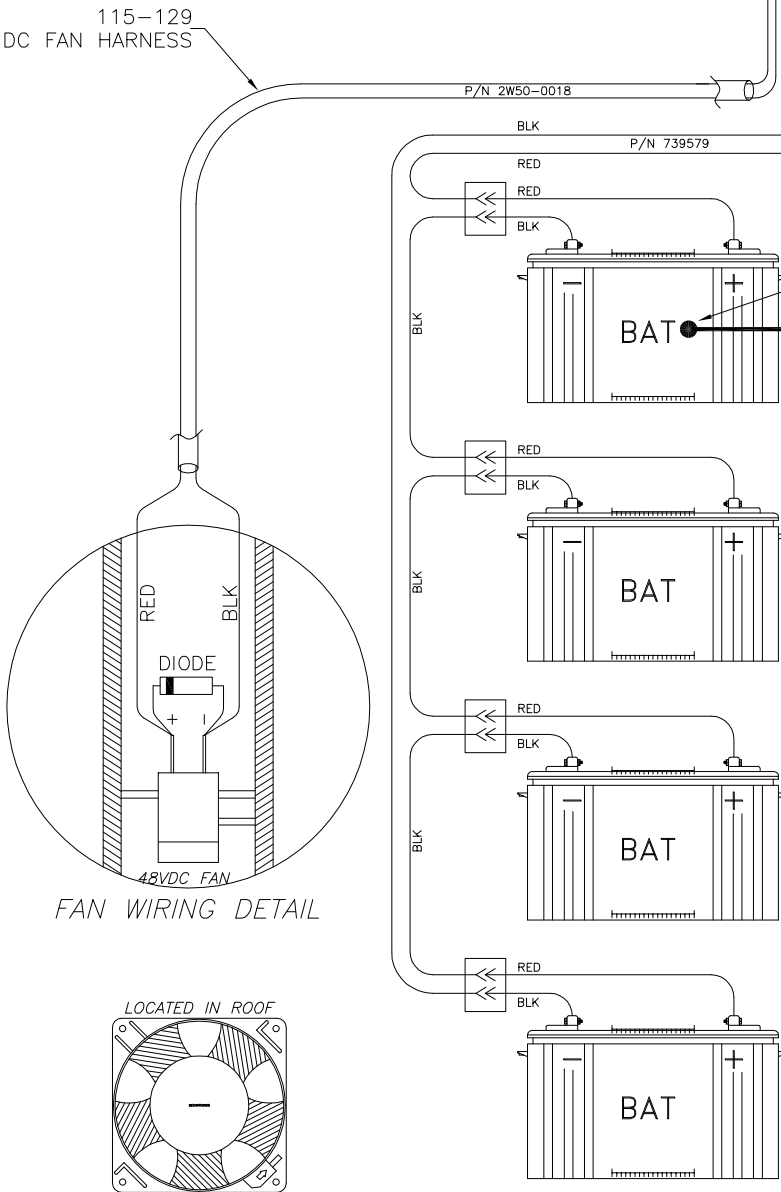
**ON BATTERY INDICATOR**

115-168  
BLUE LED & CORD PARTS

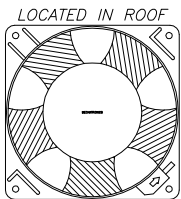


115-129  
DC FAN HARNESS

TEMPERATURE PROBE MUST BE ATTACHED TO TOP BATTERY WITH SILICONE SEALANT FOR PROPER FAN ON / OFF OPERATION.



FAN WIRING DETAIL



APPROVALS		DATE
DRAWN BY	TH	03-01-11
CHECKED BY	BB	03-01-11

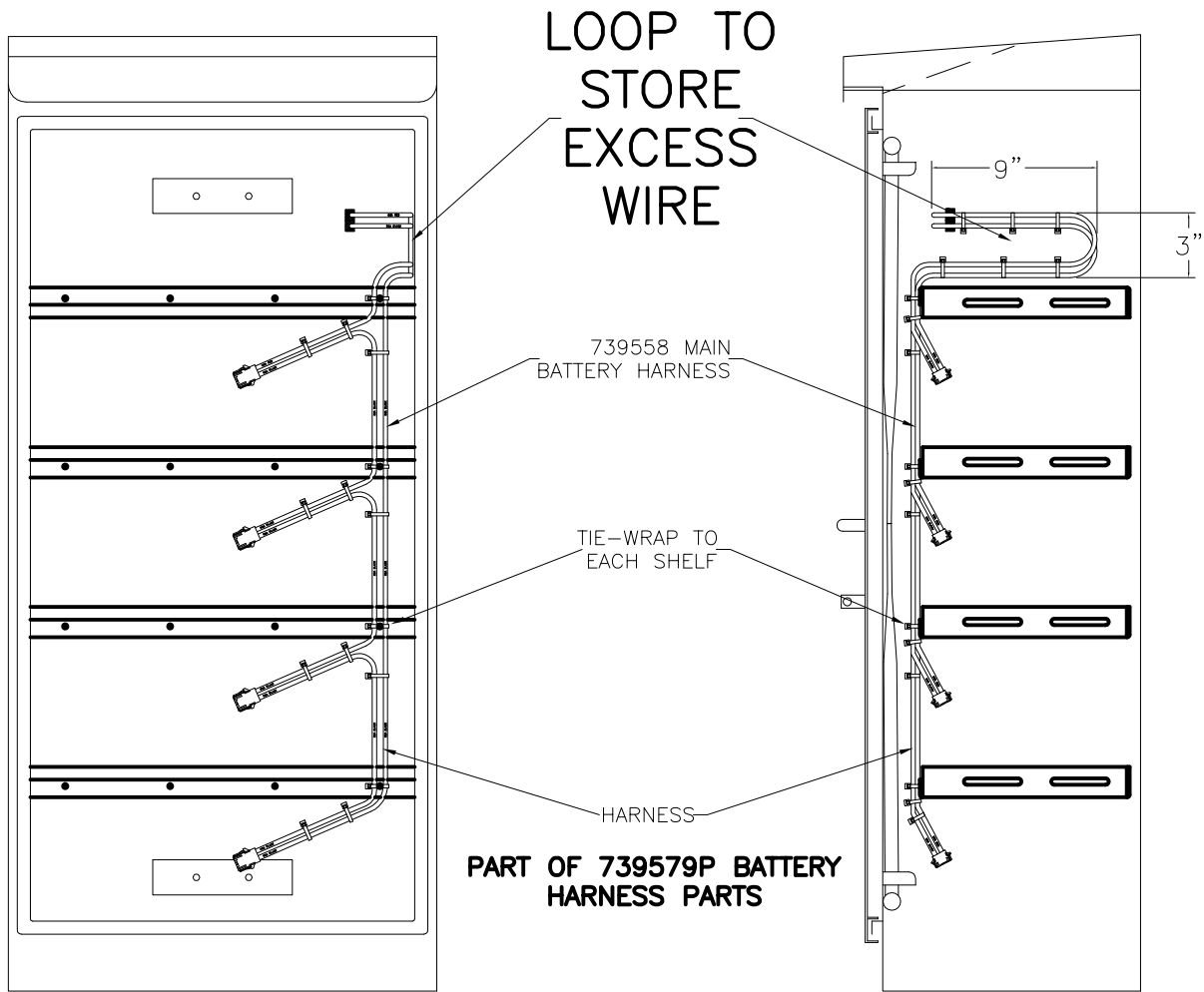
**PEEK** 2906 CORPORATE HWY  
PALMETTO, FLORIDA 34221, USA

TITLE: 240VAC  
BC100HZG CAB, PB2000ITS,  
PTS/MBPS, & NO BAT HEATERS

ANSI A DRAWING NO. 5200#16626 REV 2 SHT 5 OF 13

This document and the information it contains are the property of PEEK and are proprietary and confidential to PEEK. Any unauthorized publication, copying, use, reproduction, disclosure, or dissemination of the document or information by any means (including electronic means) is prohibited.

# BATTERY HARNESS ROUTING DETAIL



APPROVALS		DATE
DRAWN BY	TH	03-01-11
CHECKED BY	BB	03-01-11



**PEEK**

2908 CORPORATE WAY  
PALMETTO, FLORIDA 34221, USA

TITLE: **240VAC**  
BC100HZG CAB, PB2000ITS,  
PTS/MBPS, & NO BAT HEATERS

This document and the information it contains are the property of PEEK and are proprietary and confidential to PEEK. Any unauthorized publication, copying, use, reproduction, disclosure, or dissemination of the document or information by any means (including electronic means) is prohibited.

ANSI A DRAWING NO. 5200#16626

REV 2 SHT 6 OF 13

# LIFT COVER ASSY DETAIL (115-114)

RIGHT CABINET WALL  
(USE TEMPLATE PAGE-12 FOR HOLE SIZE AND LOCATION)

MS51959-45  
8-32x1/2" FLAT HEAD SCREWS  
(COUNTERSINK CABINET WALL  
SO HEAD OF SCREW IS FLUSH)

INSIDE

OUTSIDE

002090  
30A GENERATOR INLET  
(MOUNTS INSIDE CABINET)

2H52-0009 #8 FLAT WASHER  
2H52-0008 #8 LOCK WASHER  
2H51-0007 8-32 HEX NUT

2H52-0012 #10 FLAT WASHER  
2066 #10 LOCK WASHER  
2H51-0015 10-32 HEX NUT

GASKET SUPPLIED  
WITH LIFT COVER

2H50-0160  
10-32x" FLAT HEAD SCREWS  
(COUNTERSINK LIFT COVER  
SO HEAD OF SCREW IS FLUSH)

002032  
WEATHERPROOF, LOCKABLE  
GENERATOR INLET LIFT COVER

APPROVALS		DATE
DRAWN BY	TH	03-01-11
CHECKED BY	BB	03-01-11

**PEEK** 2906 CORPORATE WAY  
PALMETTO, FLORIDA 34221, USA

TITLE: **240VAC**  
BC100HZG CAB, PB2000ITS,  
PTS/MBPS, & NO BAT HEATERS

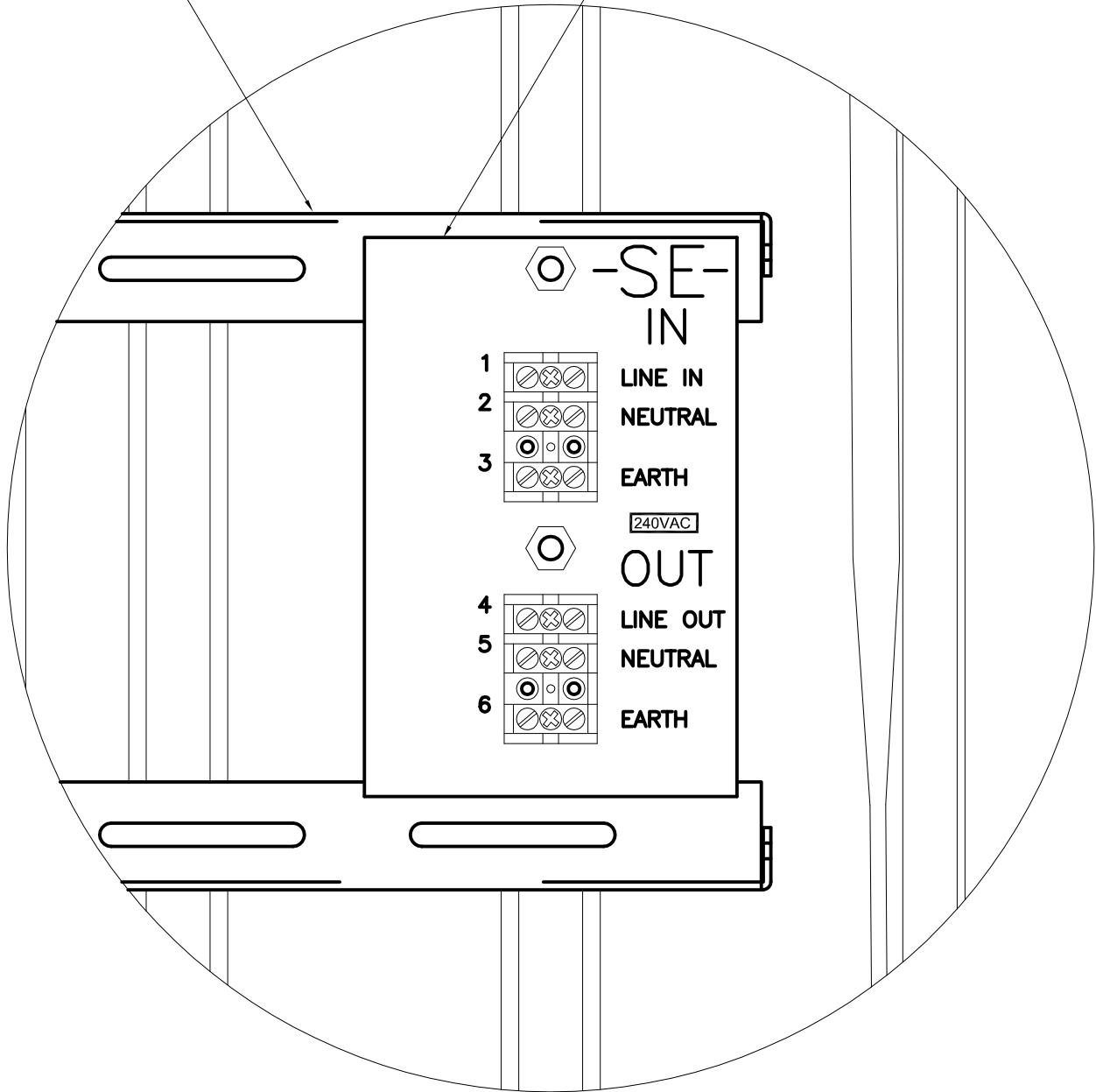
ANSI A DRAWING NO. 5200#16626 REV 2 SHT 7 OF 13

This document and the information it contains are the property of PEEK and are proprietary and confidential to PEEK. Any unauthorized publication, copying, use, reproduction, disclosure, or dissemination of the document or information by any means (including electronic means) is prohibited.

# SERVICE ENTRANCE BLOCK DETAIL

TOP SHELF

115-189  
DUAL SERVICE ENTRANCE TERMINAL BLOCKS  
(SEE LABEL ON PAGE-10)



APPROVALS		DATE
DRAWN BY	TH	03-01-11
CHECKED BY	BB	03-01-11

**PEEK** 2906 CORPORATE WAY  
PALMETTO, FLORIDA 34221, USA

TITLE: **240VAC**  
BC100HZG CAB, PB2000ITS,  
PTS/MBPS, & NO BAT HEATERS

ANSI A DRAWING NO. 5200#16626 REV 2 SHT 8 OF 13


This document and the information it contains are the property of PEEK and are proprietary and confidential to PEEK. Any unauthorized publication, copying, use, reproduction, disclosure, or dissemination of the document or information by any means (including electronic means) is prohibited.



# ASSEMBLY PROCEDURE

- 1) Drill Hole Pattern for Generator Inlet using full size template on Sheet-13.
- 2) Countersink generator inlet mounting holes on the outside of the cabinet.
- 3) Install shelves per dimensions on Sheet-1.
- 4) Connect 3-wires (36" LONG) to the generator inlet per wiring drawing.
- 5) Place adhesive lable p/n 60-403 240VAC on the generator inlet
- 6) Install generator inlet per drawing on Sheet-7.
- 7) Route and tie wrap the 3-wires (black, white, & green) to be connected to back of PTS.
- 7) Install lift cover per drawing on Sheet-7. Coat both sides of gasket with thin coat of silicone sealant before installing. Wipe all excess sealant off after tightening screws **DO NOT OVER TIGHTEN.**
- 7) Route fan cable from fan down to level of top shelf.
- 8) Assemble left and right "EIA" rails to top shelf finger tight.
- 9) Attach "EIA" brackets to UPS unit.
- 10) Install PB2000ITS unit into rack (do NOT install PTS at this time).
- 11) Tighten EIA rack bracket to shelf hardware.
- 12) Connect fan harness to PB2000ITS.
- 13) Connect 5-wires (36" LONG) plus the 3-wires from the generator inlet to rear of PTS per wiring drawing. Three green wires connect to PTS-3. Route and tie wrap 4-wires (black, white, green, & red) to connect to -SE- terminal block. Route and tie wrap the second green wire on PTS-3 to a spring nut in the back rail with bolt and washer.
- 14) Install PTS above UPS.
- 15) Apply Labels to terminal block mounting metal per Sheet-8 including the p/n 60-403 240VAC label. Drill holes per label.
- 16) Install terminal block per Sheet-8.
- 17) Connect wires to terminal block per Sheet-4.
- 18) Install and route main battery harness per Sheet-6.
- 19) Install rubber covers onto battery adapter cable per Sheet-1.
- 19) Place wiring kit on lower shelf.
- 20) Place mounting kit on lower shelf.

APPROVALS		DATE
DRAWN BY	TH	03-01-11
CHECKED BY	BB	03-01-11

 <b>2006 CORPORATE WAY PALMETTO, FLORIDA 34221, USA</b>		<small>This document and the information it contains are the property of PEEK and are proprietary and confidential to PEEK. Any unauthorized publication, copying, use, reproduction, disclosure, or dissemination of the document or information by any means (including electronic means) is prohibited.</small>	
			<b>TITLE:</b> 240VAC BC100HZG CAB, PB2000ITS, PTS/MBPS, & NO BAT HEATERS
ANSI A	DRAWING NO. 5200#16626	REV 2	SHT 9 OF 13