

Smart Pedestrian Warning Bollards

Technical specification



Features and benefits

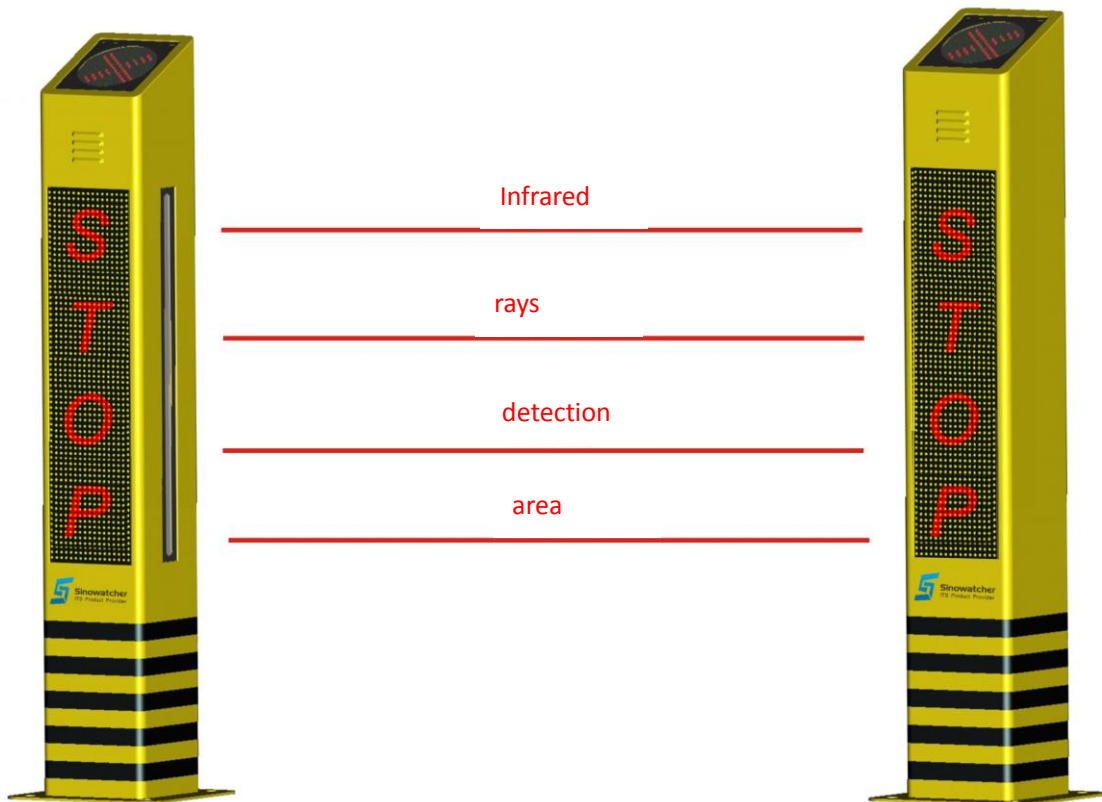
- ✓ Sheet metal/aluminum alloy case, height 1.2 meters
- ✓ Use P10/P5 bright red-green display module
- ✓ Infrared detection technology
- ✓ Power-down memory backup function
- ✓ Lightning protection; watchdog stable operation
- ✓ high-quality MP3 module is embedded, supporting MP3 format audio files
- ✓ Support manual volume adjustment function, which can be adjusted according to various occasions; can be customized for automatic 7-level volume
- ✓ Built-in 20W waterproof speaker sounds loud and clear
- ✓ Built-in clock time switch function
- ✓ Remote wireless control function available – able to set the period of volume, custom switch machine time and other functions *via remote handheld device*.



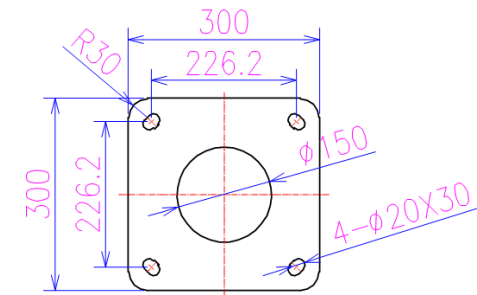
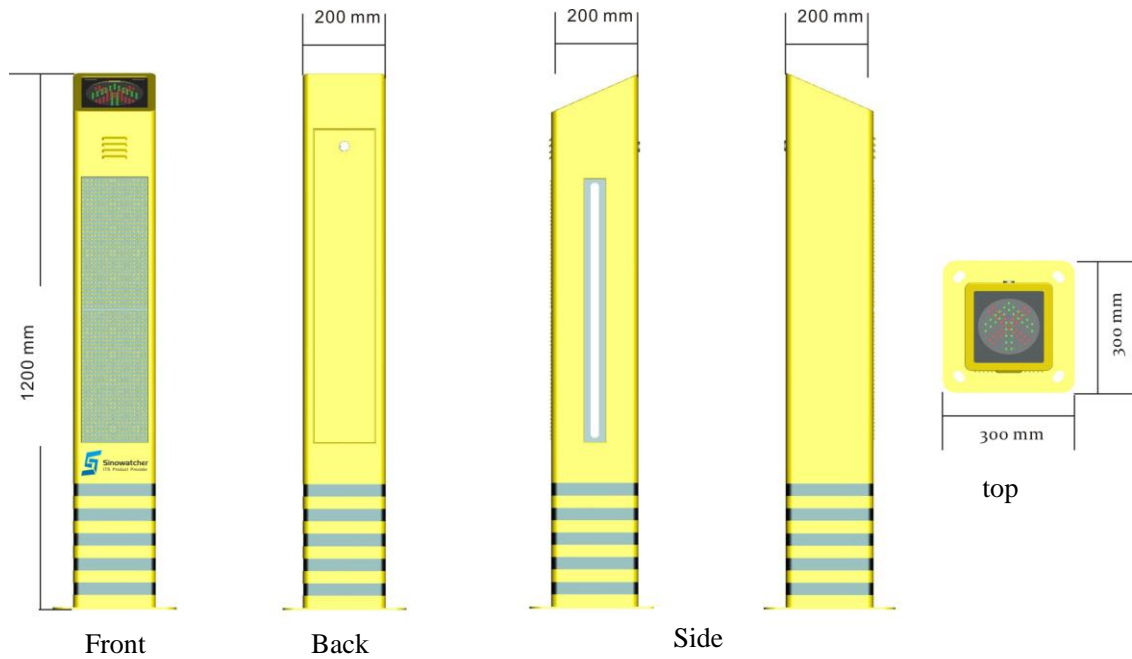
Technical specification

Working voltage	AC100~220V±10%(50Hz/60Hz)
Signal input	AC100~220V±10%(50Hz/60Hz)
Display	P10 Red & Green Bi-color (P5 full color available)
Speaker volume	adjustable for 0-120dB
Sensing distance	up to 10 meters
Size	1200mm (height)*20mm (length)*20mm (width)
Material	Sheet metal (aluminum alloy)
Color	Traffic yellow
IP grade	IP53
Working temperature	-30°C ~ +55°C

Infrared detection



Structure Diagram



Mounting diagram (bottom view)

Wiring diagram

