

# Wide Temperature Range UPS

# TC



TC-650



TC-2000 220-240V



TC-2000 120V

## Main Feature

### • Satisfying TEES qualified UPS

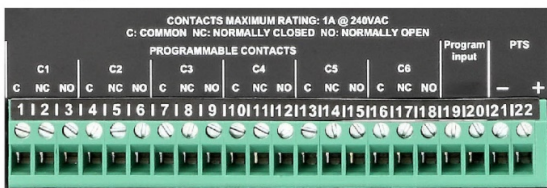
TC UPS went through several practical experiments and confirmed its industrial grade power protection. TC UPS is also compliant to Transportation Electrical Equipment Specifications (TEES) and widely applied to outdoor equipment.

### • Wide Operating Temperature (-37°C to +74°C)

To meet the harsh operating environment, TC UPS is specially designed to operate in the temperature from -37°C to +74°C, specialized for critical environmental requirement application.

### • Programmable Dry Contacts

6 outputs and 1 input programmable dry contact, provided for better power management and accident resilience.



### • Various Communications Available

TC provides various ways of communication

- USB B type
- RS-232
- Ethernet port (optional)

### • Generator Mode Compatibility

Generator mode allows wider variation in input voltage and frequency while AC generator is applied.

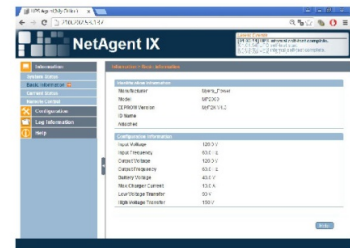
### • Accurate Message Deliver

2-line/4-line 20 character display ; High contrast monitor remains the same display sharpness while maintains under sunshine.



### • Particular Information Monitoring

Specially customized UPS monitoring system is applied to display specific TC information simply with web browser.



### • Flexible Communication Method

With communication slot, UPS status and scheduled action could easily be collected from system monitoring.

### • Enhanced Power Management Ability

Extra import ports are designed for offering more reference while UPS power management.

### • Built-in AVR Function

Fluctuating voltage, brownout and other voltage problem can be stabilized through TC in-built AVR for your best interest.

### • Inverter Mode Setting

TC UPS is capable of running continuously in inverter mode and provide electronic current limit.

# Wide Temperature Range UPS

## Specification

Model		TC-650	TC-2000
<b>Configuration</b>			
Capacity (VA)		650 VA	2000 VA
Capacity (Watts)		650 W	1500 W
<b>Input</b>			
Voltage		120 VAC $\pm 25\%$ 220/230/240VAC $\pm 25\%$	120 VAC $\pm 25\%$ 220/230/240VAC $\pm 10\%$ or $\pm 25\%$
Frequency		120VAC 60Hz 220/230/240VAC 50 / 60 Hz	
<b>Output</b>			
Waveform		Pure Sine Wave	
Voltage		120 VAC or 220 / 230 / 240 VAC	
Frequency		50 Hz / 60 Hz $\pm 0.5$ Hz	
Transfer Time	Normal Mode (Max.)	12 ms	
	Generator Mode (Max.)	25 ms	
<b>Protection</b>			
Full Protection		Overload, Breaker	
<b>Management &amp; Communication</b>			
Communication Port		RS232 , USB B Type, SNMP card (Option)	
<b>Physical</b>			
Dimensions (WxDxH) (mm)		432 x 254 x 88.6 (2U)	432 x 254 x 133 (3U)
Weight (kgs)		14	21
Shipping Dimensions (mm)		540 x 388 x 233	540 x 388 x 277
Shipping Weight (kgs)		15.5	23
<b>Indicators</b>			
LCD Display		2 Line or 4 Line Multi-function LCD	
LED Display		Output Status, Alarm, Fault LED	
<b>Environmental</b>			
Operating Temperature		-37°C to +74°C	
Operating Humidity		0-95 % RH (Non-condensing)	
Audible Noise		Less than 50 dB	
<b>Battery</b>			
String Voltage		24 VDC	48 VDC
Type		Lead-acid Battery	
Max Charge Current		10A	

\* Specifications are subject to change without further notice.

\* Specifications are for reference, actual information should be based on real product.