

A Safe Return To Indoor Lessons

Drop off & Pick up

Each class will be assigned one **room** for all their lessons – teachers will move between classes according to the timetable. Each room has an assigned drop off/pick up point - please see the accompanying diagram to learn these.



Cones will be placed at 2m gaps outside each entrance to encourage social distancing



Sanitiser stations will be placed at each entrance

Teaching

Teaching will be delivered in a socially distanced manner. Dance spaces will be marked out with spots according to social distancing guidelines.

We will not be asking pupils to wear masks when dancing as research from the World Health Organisation indicates that it can be dangerous.

What to do if you develop symptoms:

If you develop symptoms of coronavirus you must self isolate according to government guidelines. This means you should not attend dance lessons. If you test positive and have attended lessons in the last 48 hours, please inform The Heights as soon as possible.

PLEASE RESPECT THESE MEASURES AS THEY ARE IN PLACE TO KEEP EVERYBODY SAFE!

Using Building Facilities



Changing rooms = off limits to pupils (they are too small to ensure social distancing). Pupils should therefore arrive in uniform & onesie or be prepared to change in the hall (with safeguarding measures in place). Pupils will not have to change outfits between lessons while this is the case.



Kitchen = off limits to pupils. Pupils must bring enough bottled water (1 or 2 bottles) to last for the duration of their lessons. There will be **NO REFILL FACILITY**. Water carriers, microwave and water boiler will be off limits to reduce contact surfaces

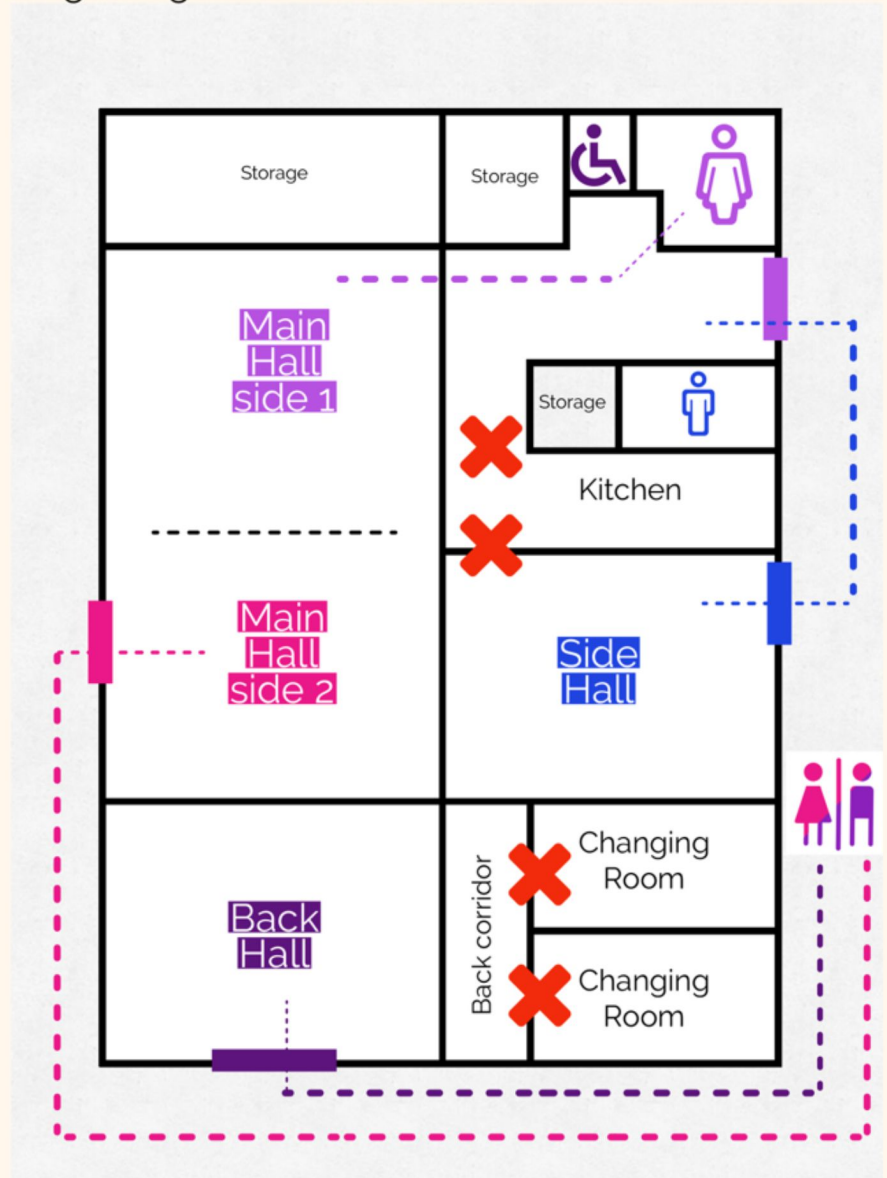


Toilets - each room has a designated toilet facility to be used by the class assigned there. Please see the accompanying diagram to familiarise yourself with these facilities and the routes to/from them. Helpers will be available to accompany young children to the toilet.

*rough diagram - not to scale

Main Hall Side 1 classes (Miss Fearnley) - dropped off/ picked up via the Main Entrance door. Assigned toilet facility - Ladies toilets, accessed via the entrance hall.

Main Hall Side 2 classes (Miss Ambery) - dropped off/ picked up via the Main Hall fire door. Assigned toilet facility - external portaloo, accessed by exiting via the fire exit and walking round the side of the building.



X = closed to pupils

█ = assigned entrances/exits for each room (classes to stay in one room, teachers to move round)



Toilet facilities colour coded and routes to/from indicated for each room/class

If the main hall is not being divided in half, then all pupils assigned to that hall may enter through the main entrance.

Helpers will be available to supervise young children to the toilet facilities

Back Hall classes - dropped off/ picked up via the Back hall fire door. Assigned toilet facility - external portaloo, accessed by exiting via the fire exit, and walking round the side of the building.

Side Hall classes - dropped off/ picked up via the Side hall fire door. Assigned toilet facility - Men's toilets, accessed by exiting via the fire exit, and entering the entrance hall via the main entrance (avoiding routes through the kitchen)