

Briar Grove HOA

By: Suzanne Simpson

Land Stewardship Director

Bayou Land Conservancy

September 30, 2019

Stewart's Creek Preserve

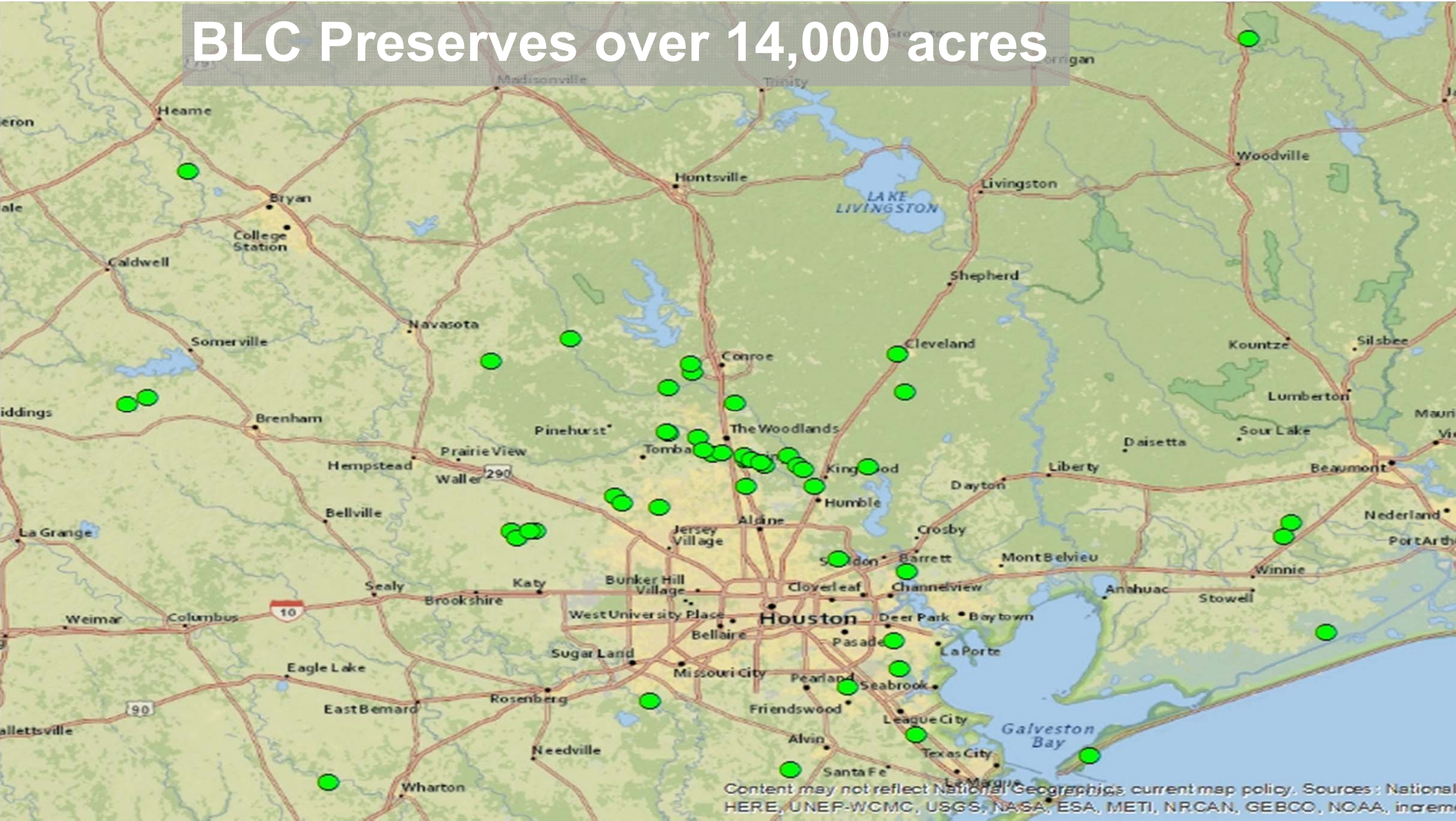
BayouLandConservancy

We are your LOCAL land trust

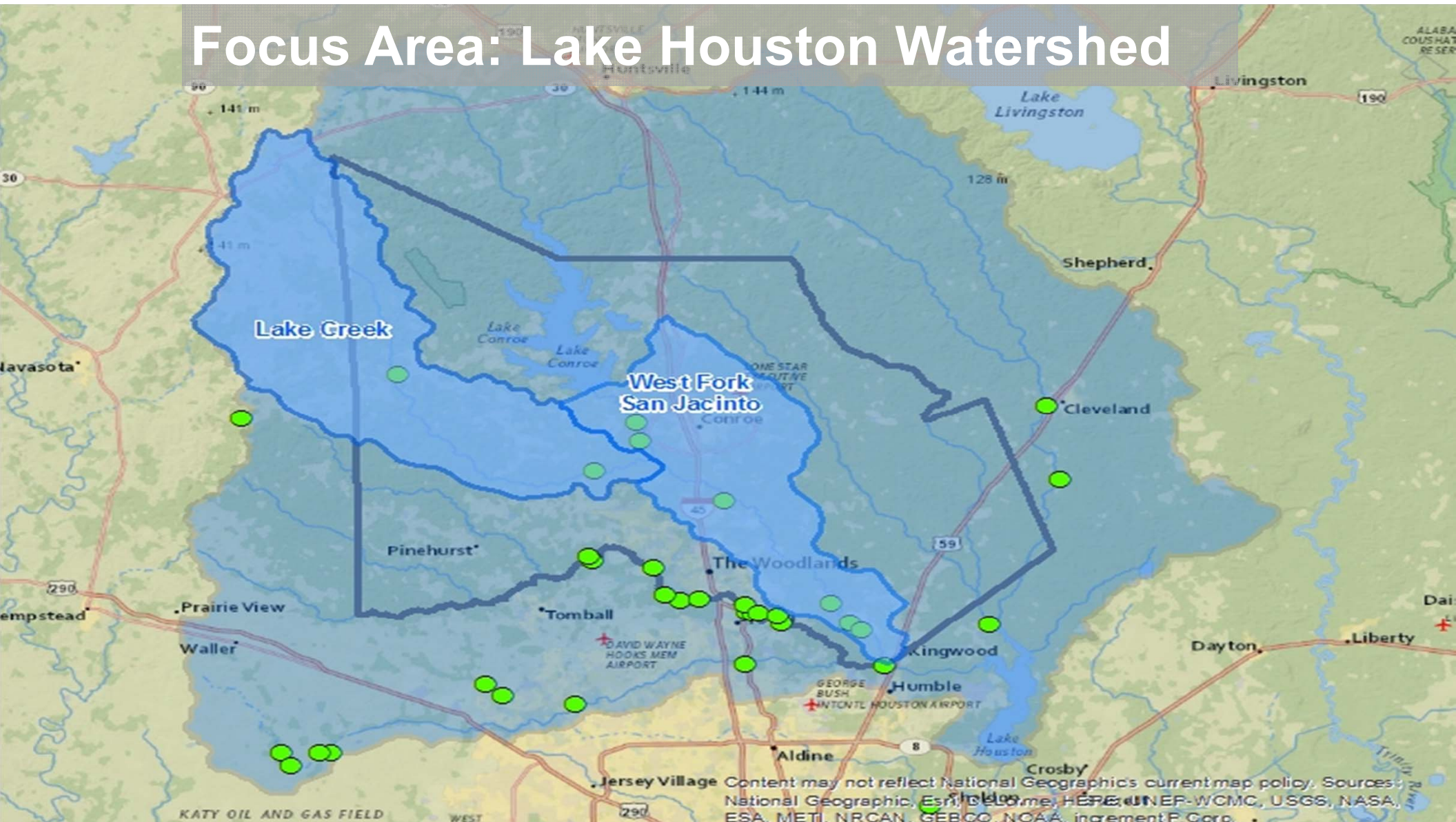
MONTGOMERY COUNTY NATURE PRESERVE
SPRING CREEK GREENWAY



BLC Preserves over 14,000 acres



Focus Area: Lake Houston Watershed





What is a land trust?

Their mission is to preserve land
via conservation easements
and/or acquisition.



What is a land trust?

There are 30 land trusts in Texas that hold conservation easements and 1,100 land trusts in the U.S.



What is a Conservation Easement?

- Voluntary legal agreement between a landowner and conservation organization that places restrictions on specified future uses.
- Land ownership carries with it a bundle of rights—the right to occupy, lease, sell, or develop.
- A landowner can give up one or more of those rights for a purpose such as conservation while retaining ownership of the remainder of the rights.
- Land Trust holds the defined RIGHTS, often termed DEVELOPMENT RIGHTS

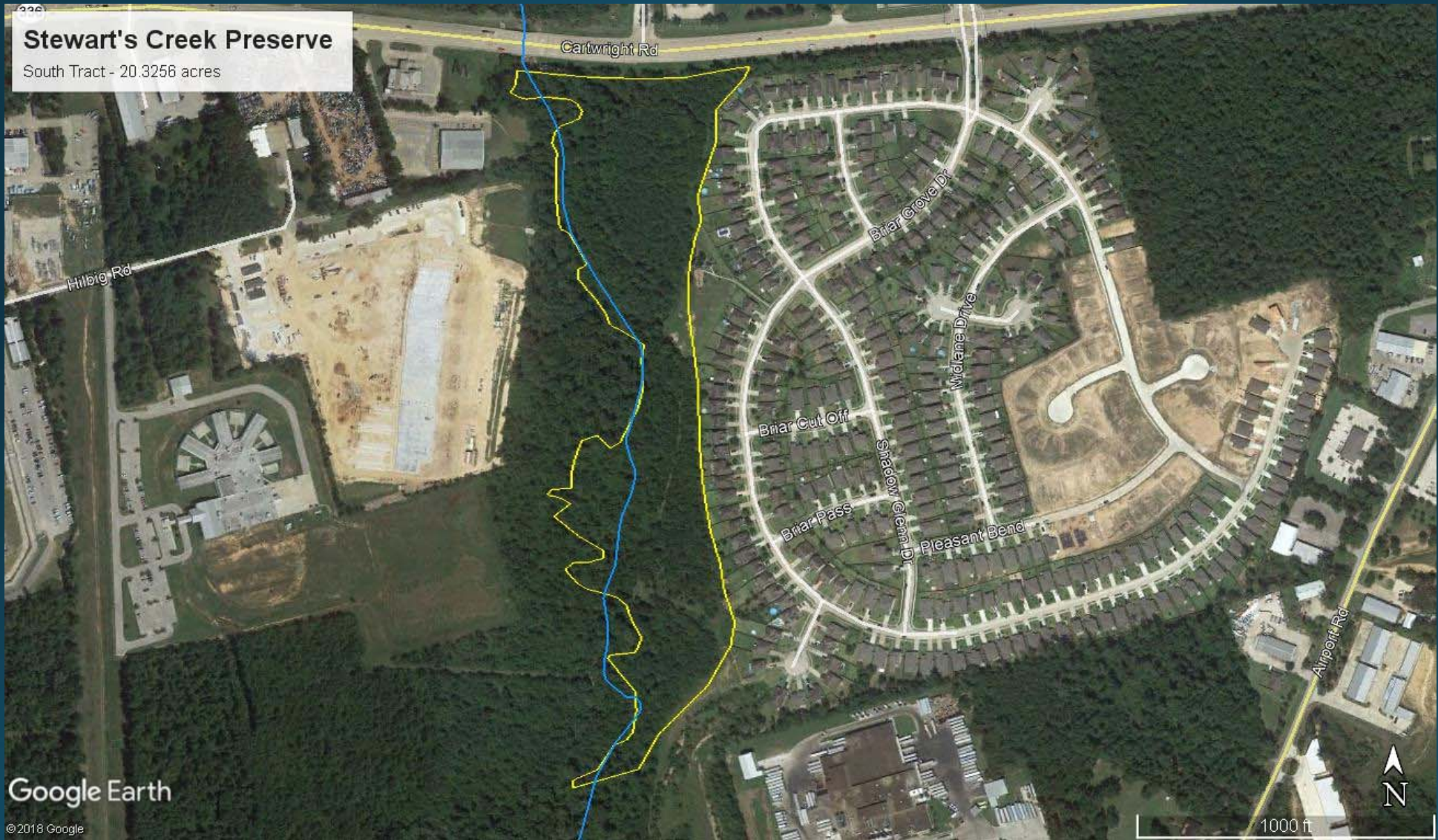
Stewart's Creek Preserve Fast Facts

- 55 total acres
- 20 acres located within Briar Grove subdivision, wholly within floodway/floodplain
- Owned by City of Conroe, perpetual Conservation Easement held by Bayou Land Conservancy
 - This means it will *never* be developed
- Partially fulfills requirements of USACE permit

036

Stewart's Creek Preserve

South Tract - 20.3256 acres



Google Earth

© 2018 Google

1000 ft



What To Expect

- Area will remain natural
- Mowed areas within the Conservation Easement will be allowed to regrow (or opportunity for community tree planting)
- Strategic boundary signage to demarcate property line
- Letters sent to houses abutting preserve
- If needed, bollards to prevent motorized vehicle activity

Questions?



do you play **OUTSIDE?**

Free five-week adult nature training

Spring Creek Greenway Ambassador Program

Mandatory Orientation: October 3rd at 6:30 pm

Pond and Water Quality Studies; Trail Maintenance;
Local Flora/Fauna Identification; Kayaking; and more

Sign-up required

bayoulandconservancy.org/ambassador-program

Stay In Touch!



Find us on  Follow us on 

Become a member!

Suzanne Simpson

- ssimpson@bayouland.org
- 281-576-1634