

IPS e.max[®] IPS

all ceramic
all you need



veneers



inlays/onlays



crowns

IPS e.max[®] CAD
all you need for single
unit restorations



IPS e.max[®]
all ceramic all you need



IPS e.max[®] CAD: all you need for CAD/CAM ceramics

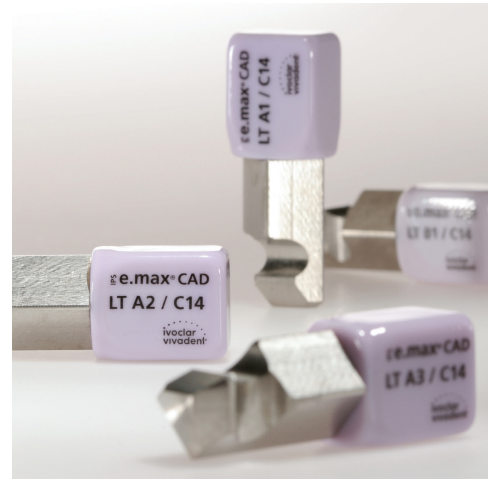
Lithium disilicate glass-ceramic block

Innovation

in glass-ceramics

IPS e.max CAD is a truly unique and innovative material. Formulated from lithium disilicate ceramic, IPS e.max CAD is delivered in a pre-crystallized block to be milled in the E4D[®] Dentist CAD/CAM system.

This pre-crystallized block has been optimized for highly efficient milling. In its pre-crystallized form, IPS e.max CAD is missing two of its final properties – its final color and final strength. After milling, the IPS e.max CAD restoration is simply crystallized during a short firing cycle in a traditional porcelain furnace such as the Programat[®] CS. In fact, an IPS e.max CAD restoration can be stained, glazed and crystallized in a single firing: offering the ultimate combination of strength, esthetics, and efficiency.



High Strength

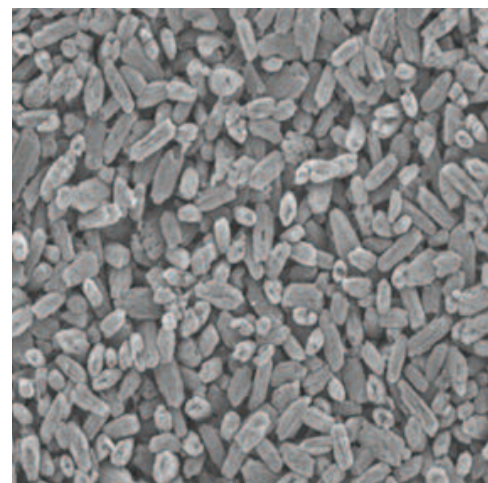
for chairside CAD/CAM processing

It's easy to take advantage of the impressive material properties of IPS e.max CAD. The lithium disilicate glass-ceramic is efficiently milled in its "soft" state. At this stage, the material still exhibits its bluish color.

During the subsequent crystallization process in your dental office, the IPS e.max CAD restorations attain their final physical properties including their final high strength of 360 MPa, which enables conventional cementation.

In addition to high strength, the restorations acquire their desired esthetic properties, such as tooth color, appropriate translucency, and brightness.

With the advent of IPS e.max CAD, high strength, esthetic, conventionally cementable all-ceramic crowns can be fabricated in the dental office in only one appointment!



IPS e.max CAD Lithium-Disilicate

IPS e.max CAD in its final crystallized state:
360 MPa of flexural strength

Efficiency and Esthetics

IPS e.max CAD blocks are available in 16 A-D shades, as well as in 4 Bleach BL shades. Opalescence, natural light scattering and excellent chroma enhance the natural appearance and vitality of your IPS e.max CAD restorations. Since crystallization and glaze firing occur in a single cycle, there is no need for manual polishing.

IPS e.max CAD is ideally integrated into the IPS e.max system and opens up a variety of new possibilities for the fabrication of all-ceramic restorations. For example, when you need to add a lab-fabricated zirconium-reinforced IPS e.max bridge you can benefit from the shade-matching and high strength that IPS e.max offers.

If you want to further characterize your restorations, simply use the IPS e.max Crystall Shades and Stains.



Dr. A. Peschke

16 A-D Shades

A1, A2, A3, A3.5, A4,
B1, B2, B3, B4,
C1, C2, C3, C4,
D2, D3, D4

4 Bleach Shades

BL1, BL2, BL3, BL4

2 Translucencies

HT (High Translucency)
LT (Low Translucency)



IPS e.max CAD for E4D® Dentist Starter Kit

- Selection of popular IPS e.max CAD blocks
- Crystall Shades/Stains
- Crystall Glaze Spray and Crystall Glaze Paste
- Multilink Automix cement CAD blocks
- Virtual CADbite
- All necessary accessories conveniently organized in a display cabinet

all you need for an optimum outcome



Programat® CS Furnace

IPS e.max CAD delivers the highest possible precision and optimum results for your patients through its unique crystallization process.

A ceramic furnace is required for crystallization and glaze firing. The Programat CS furnace has been exclusively developed to crystallize IPS e.max CAD efficiently and simply. In addition, the Programat CS can also be used for the staining of IPS e.max CAD restorations. The furnace offers all of the essentials with a dentist-oriented interface. Intuitive symbols are used to guide the user through preset programs that include those specifically for IPS e.max CAD.



Multilink® Automix

Multilink Automix is a dual-curing adhesive luting cement providing high immediate bond strengths to all types of restorative materials. The combination of IPS e.max CAD and Multilink Automix provides long term security with a fast, easy and efficient cementation protocol.

The unique self-etching, self-curing primer seals the dentin to minimize post-operative sensitivity while also increasing bond strengths to dentin and enamel.

The cementation process is further simplified by the automix syringe delivery form, for a more efficient mix and direct application.

100% CUSTOMER SATISFACTION
GUARANTEED!

www.ivoclarvivadent.com

©2008 Ivoclar Vivadent, Inc.
IPS e.max, Programat, and Multilink are registered trademarks of Ivoclar Vivadent, Inc.
E4D is not a registered trademark of Ivoclar Vivadent, Inc.
627289 Rev. 2 2/2009

United States

175 Pineview Drive
Amherst, NY 14228
716.691.0010
800.533.6825
Fax: 716.691.2285
mail@ivoclarvivadent.us

Canada

2785 Skymark Avenue, Unit 1
Mississauga, Ontario L4W 4Y3
905.238.5700
800.263.8182
Fax: 905.238.5711
mail@ivoclarvivadent.ca

ivoclar
vivadent®
passion vision innovation